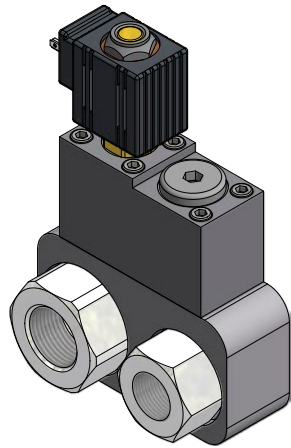


Válvula By-Pass para bomba FR

By-Pass Valve for FR Pump



Con limitadora
With relief valve



Sin limitadora
Without relief valve

Descripción Description

Valvula Bypass con o sin limitadora de presión que puede ser usada en aplicaciones donde la bomba funciona constantemente.

Bypass valve with or without pressure regulator valve can be utilized in applications where the pump is operating constantly.

Datos Principales Main Data

| Tamaño SIZE | Con limitadora with Relief valve | Sin limitadora w/o Relief valve | A | B | C | D | E | S | P | Peso (Kg) Weight |
|--------------------|-------------------------------------|------------------------------------|-----|----|----|-----|----|------------|------------|---------------------|
| FR 20/30 (24V) | 9069290 | - | 95 | 40 | 29 | 145 | 80 | 3/4" BSP | 1/2" BSP | 3,8 |
| FR 40/60 (24V) | 9061590 | 9073890 | 108 | 50 | 29 | 150 | 85 | 1" BSP | 3/4" BSP | 4,2 |
| FR 10.4/15.8 (12V) | 9071790 | 9075590 | 108 | 50 | 29 | 150 | 85 | 1 5/16" UN | 1 1/16" UN | 4,2 |
| FR 80/110 (24V) | 9061690 | 9075690 | 118 | 58 | 29 | 153 | 88 | 1 1/4" BSP | 1" BSP | 4,8 |
| FR 20.8/28.9 (12V) | 9071890 | 9075790 | 118 | 58 | 29 | 153 | 88 | 1 5/8" UN | 1 5/16" UN | 4,8 |

