













User Manual






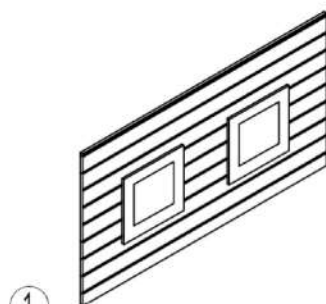
My Robot Home Plus

Screws:

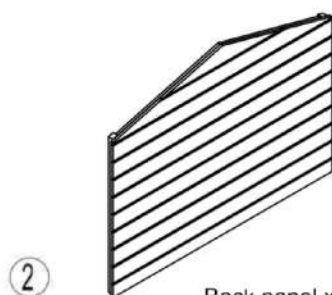
- (A)  Ø3.0*40 4+1 Pcs
- (B)  M6*30 4 Pcs
- (C)  Ø3.5*30 12+1 Pcs
- (D)  Ø3.5*25 13+1 Pcs
- (E)  Ø3.0*18 8+1 Pcs

- (F)  2 Pcs
- (G)  2 Pcs
- (H)  2 Pcs (Spare)
- (I)  10cm 2 Pcs
- (J)  5*5cm 2 Pcs

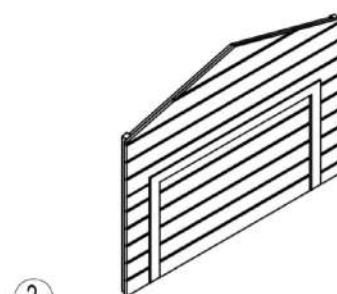
- (K)  2 Pcs
- (L)  1 Pcs
- (M)  1 Pcs



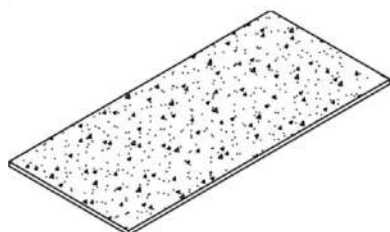
1 Side panel x2 Pcs



2 Back panel x1 Pc



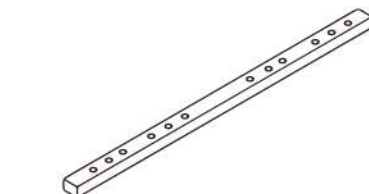
3 Front panel x1 Pc



4 Roof x2 Pcs



5 Roof cap x1 Pc



6 Wood bar x1 Pc



7 Wood side bar x2 Pcs



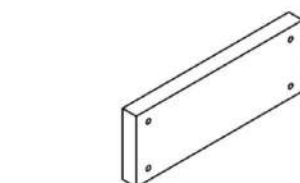
8 Metal bar x1 Pc



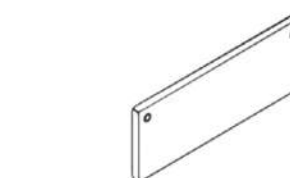
9 Metal side bar x2 Pcs



10 Metal middle bar x2 Pcs



11 Counterweight iron plate x2 Pcs

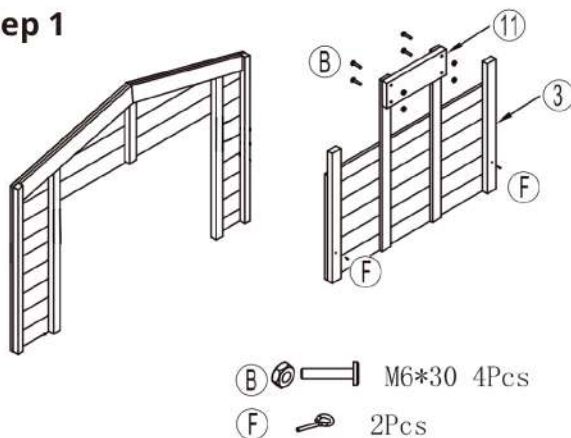


12 White PVC sign x1 Pcs

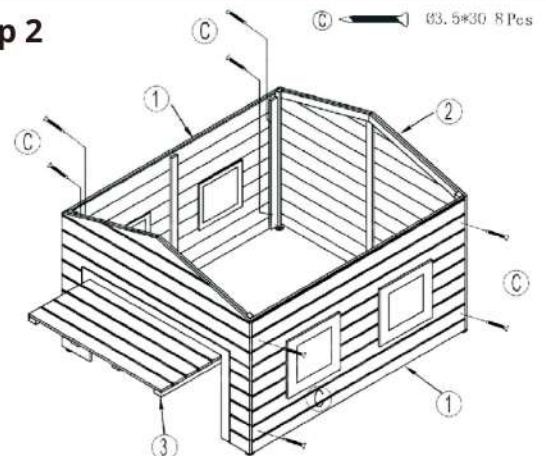
BEFORE STARTING THE INSTALLATION:

1. For the best result, Auto-mow recommends placing the garage on concrete, brick, or similar flat and hard surface.
2. If installed on grass, Auto-Mow recommends that you put small bricks below on all 4 corners, to support the garage, and to make sure the garage will not sink into the ground.

Step 1

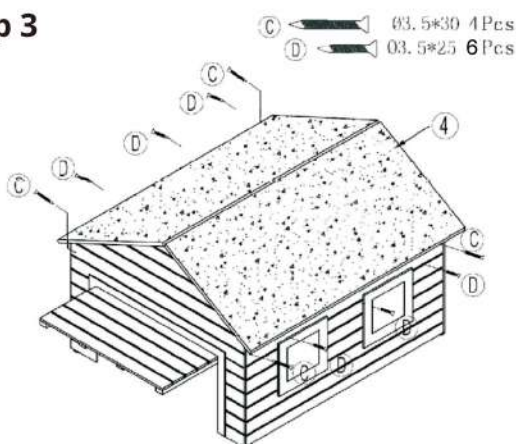


Step 2



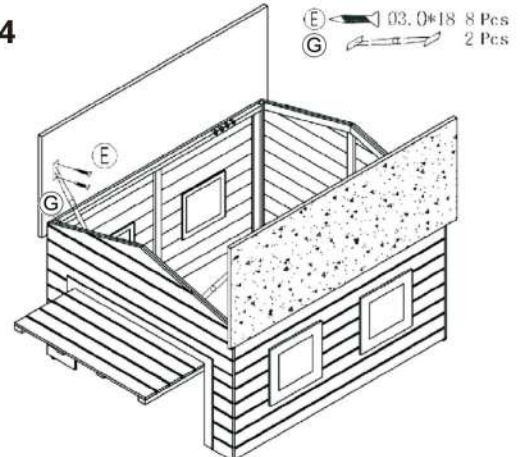
Use 8 pcs of Screw C to assemble the walls.

Step 3



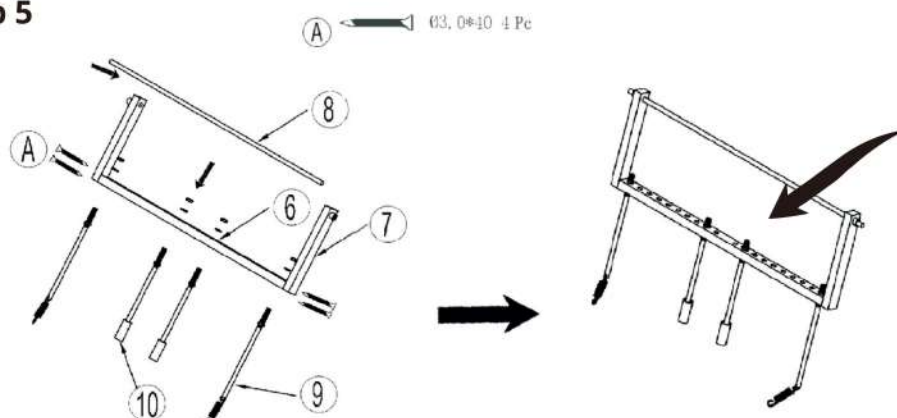
Use 4 pcs of Screw C and 4 pcs of Screw D to attach the roof

Step 4



Use 8pcs of Screw E to attach the hinges G.

Step 5

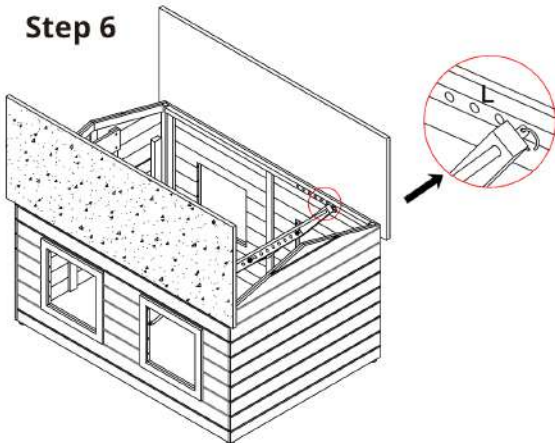


Remark:

Remember to tighten the nut on the metal post - on both sides of the wooden panel.

The metal posts must be completely fixed so that they cannot move individually.

Step 6



First, insert the iron bar with a hole side into the side panel marked with L, and then put the other side into the panel mark R. Push the iron bar to the bottom to R side until the hole of the iron bar is exposed, and insert the pin M into the hole to fix it.

Step 7

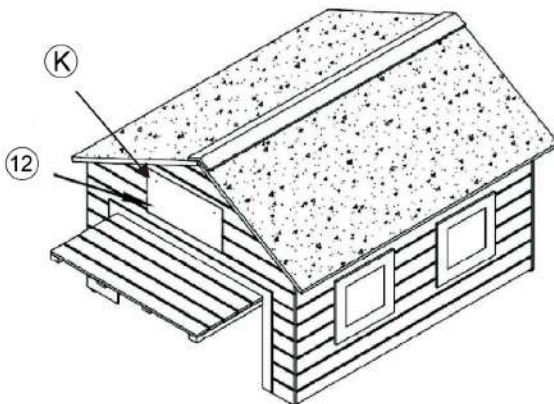
ⓓ ⚡ 03.5"25 3pcs



Use 3 pcs of screw D to attach the roof cap.

Step 8

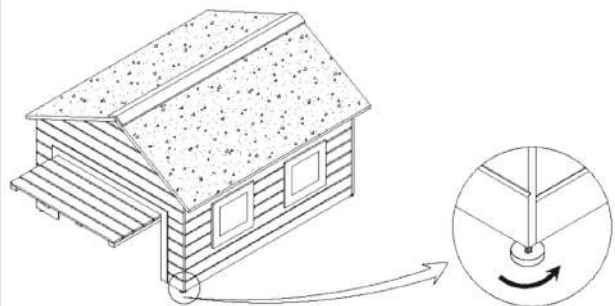
Ⓚ ⚡ 2 Pcs



Use 2 pcs of screw L to add the White PVC Sign if desired.

Step 9

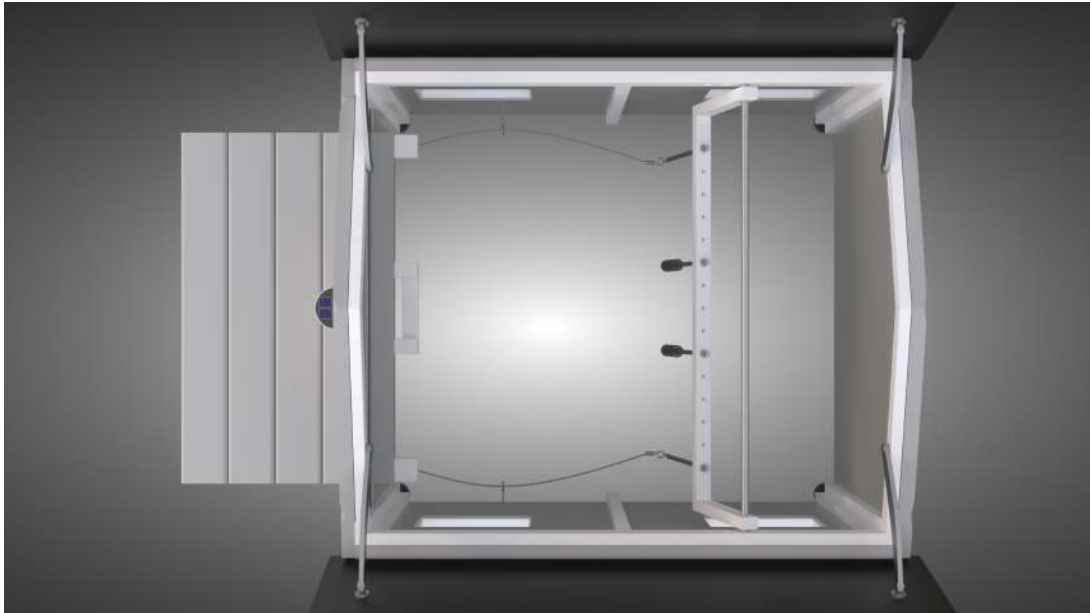
Adjust the level feet below the garage, so the port does not touch the ground/grass



Remark:

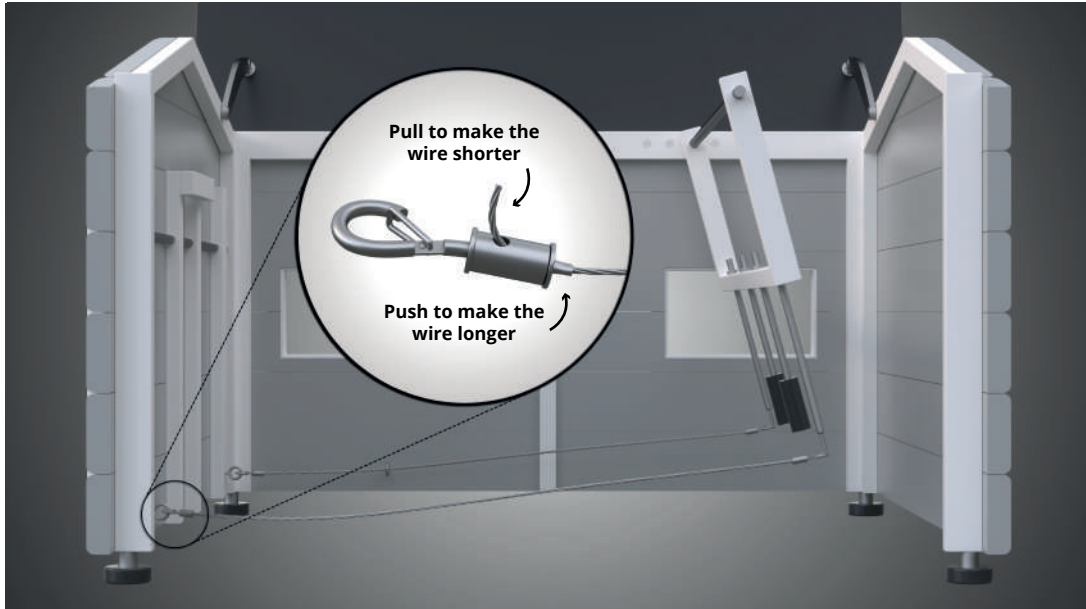
We also have the Angle Bracket with long spikes. (Part J & Part H)
If you want to fix the house to the ground,
please use screw D to connect the Angle.
Bracket (H) to the house.
Make sure the long spikes (J) are fixed in the ground.

Step 1 - Adjust the mechanism to the docking station



Place the robot inside the Garage and adjust the 2 poles to fit the docking station and the robotic lawn mower.

Step 2 - Fit the string to adjust the tention of the automatic door.



Close the port using a rock or similar, and adjust the wires to fit the position between the door, robot and docking station.

TROUBLESHOOTING:

- 1.If the door cannot open or close completely: Inspect the feet leveler beneath the garage.
- 2.If the door cannot close fully: Return to step 3 and fine-tune the mechanism's angle towards the door to provide a more extended push on the rods for complete closure.
- 3.If the door doesn't fully open: Return to step 3 and adjust the mechanism's angle towards the docking station.
- 4.If the door still struggles to open or lock: Go back to step 2 and readjust the mechanism at the top of the side panels for a optimal position.