

Tricycle User Manual



Before starting work, please be sure that all items that come with the set are accounted for

SAFETY FIRS

Traffic Rules:

- 1. When using your tricycle, obey all applicable traffic regulations.
- 2. It is advisable to equip your tricycle with a warning device such as a horn, bell, or light in case you are riding at times of poor visibility. This is even required in some jurisdictions.
- 3. Always be alert. People or animals may dart in front of you. Also be careful of passing parked cars, whose doors might open suddenly.
- 4. Be careful at road and rail crossings. Slow down and check both ways for oncoming traffic.
- 5. Check your brakes frequently, and replace them as needed.

Weather and Clothing:

- 1. In wet weather, be careful to avoid sharp turns and allow more distance for braking. Caliper brakes may become less efficient when wet.
- 2. Allow more distance for braking when riding through leaves, loose gravel, or other debris, as these can also affect the stopping power of your brakes.
- 3. We do NOT recommend riding your bike at night. If you have an emergency that makes it necessary to ride at night, be sure to have proper lights and reflectors. Do NOT ride at night without a front light, rear lights, white front reflectors, red rear reflectors, and yellow wheel reflectors.
- 4. Please wear a helmet that meets safety standards when riding.
- 5. Always wear shoes when riding your bike and avoid loose-fitting clothes.

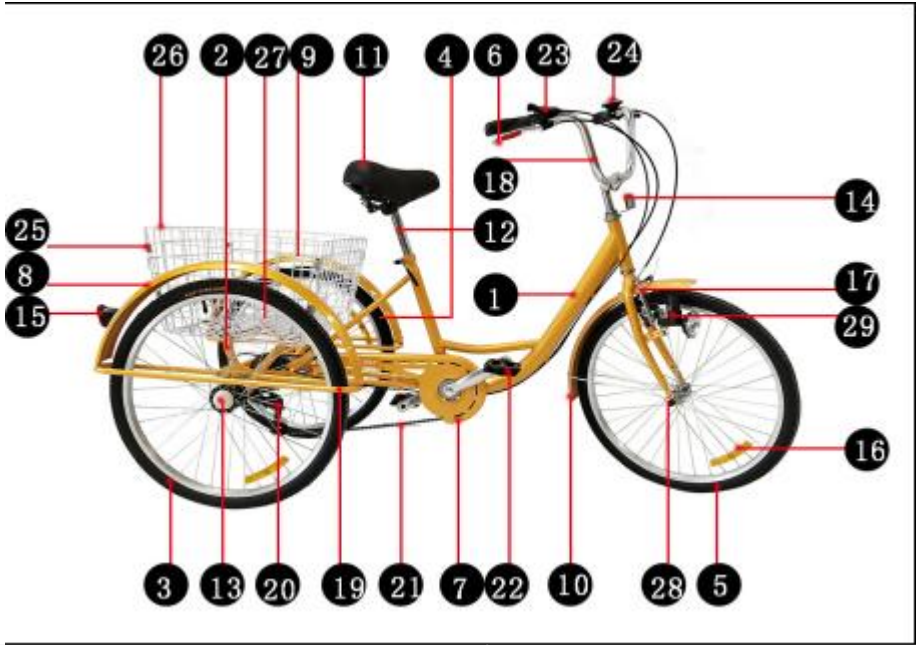
Safety Checks:

- 1. Please check whether the brakes are positioned properly before riding.
- 2. Replace worn or broken parts immediately, especially bent or broken spokes and bent or damaged wheel rims.
- 3. Regularly check whether all fasteners and components are securely tightened.
- 4. If any part does not operate properly, discontinue use until its replacement.
- 5. Regularly check reflectors and lights to make sure that they are clean, straight, unbroken, and securely mounted. Riding with low light or without reflectors and lights at night time is extremely dangerous.

Sensible Riding:

- 1. Don't push backward on the pedal when using the shifting system. Otherwise, the chain will get stuck and the bike will be seriously damaged.
- 2. Please be mindful of your speed. Ensure you have sufficient room to brake in an emergency.
- 3. Do not carry packages or objects on your tricycle in a way that obstructs your view of the road.

PACKAGE LIST



NO.	Part Name	NO.	Part Name
1	Frame	15	Rear lights
2	Rear axle	16	Wheel reflectors
3	Rear wheel(R)	17	Brake
4	Rear wheel(L)	18	Handlebar
5	Front wheel	19	Mud board support
6	Brake handle	20	Rear derailleur
7	Chain cover	21	Chain
8	Rear fender(1)	22	Foot pedals
9	Rear fender(2)	23	The gear lever
10	Front fender	24	Bell
11	Seat cushion	25	Basket connecting pieces
12	Seat post	26	Rear basket

13	Rear axle caps	27	Basket bolt brackets
14	Front reflector	28	axle cap

Tip: tools need to be prepared to install the tricycle

Note: for convenience, all the necessary screws have been pre installed in the position where they should be installed. Please remove the screws and put them in a safe place before assembly, connect the parts, fix them with screws and tighten them for the final riding experience. It is suggested that the tools needed for assembly should be prepared by oneself



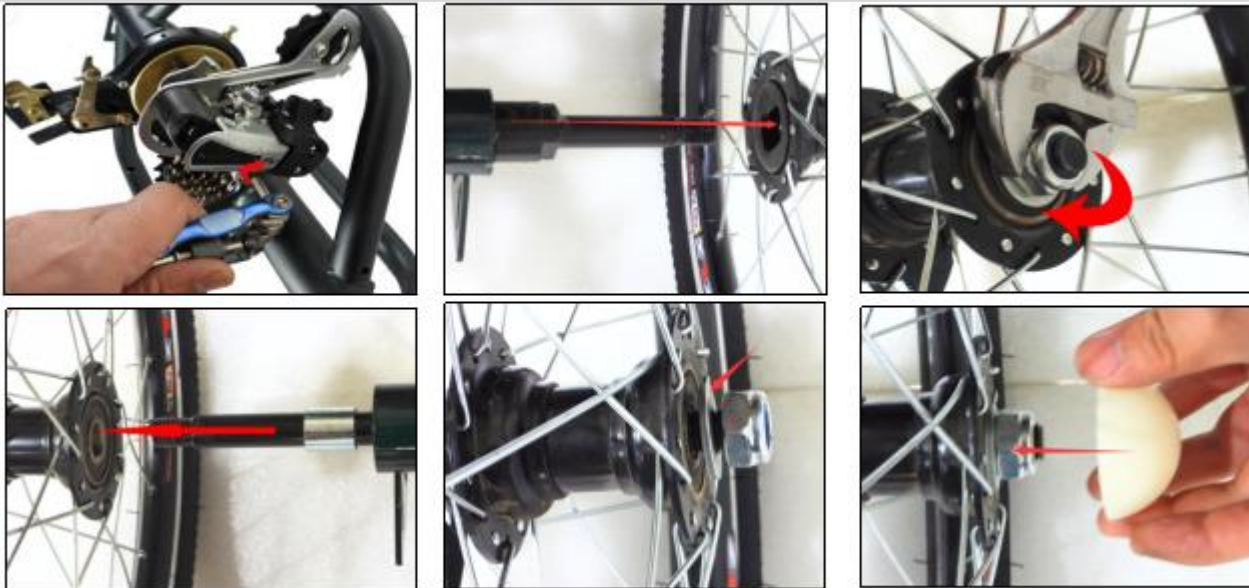
Assembly Steps

o Open the package with scissors

Before You Start:
Open the package carefully. We use doubly-secured packages to avoid damage during shipping. Mind the nails used to secure the carton so they don't hurt your fingers. Take out all parts from the carton and remove all bubbled plastic bags. Put the parts nearby.



o Transmission and rear wheel installation procedure



Take out the transmission from the accessory box and install it on the rear axle. Remove the pre fitted nut and washer from the rear axle. Put them around.

Place the rear axle between the two rear wheels. Note that the left wheel is marked "O". Another one marked "grooved" is the right wheel.
Make sure to use the correct wheel and insert the left bolt of the rear axle into the bolt hole of the left wheel. Replace the washer and nut and tighten with adjustable wrench.
Repeat these steps for the right wheel.
Press in rear axle cover directly with a tool

o Installing the Rear Axle and Frame



Rest the rear axle and frame vertically on the ground.
Remove the 6 sets of nuts, washers, and bolts from the rear frame and place them nearby. Starting with either side, align the slots and holes on the rear axle with those on the frame as shown.
Replace the 3 sets of bolts, washers, & nuts and tighten them with an adjustable wrench.
Repeat these steps with the other side.
Caution:Make sure the ends of the rear axle and frame are tightly attached and each bolt is tightly secured, as otherwise the behavior of the chain will be impacted.

o Installing the Chain



Pass one end of the chain through the guide wheel of the rear derailleur. Arrange the chain through the guide wheel in an S shape as shown.
Run the other end of the chain around the rear freewheel, connecting it to the forward-facing side of the front freewheel.
Join the two ends of the chain with pliers and ensure that the side surfaces are flat, as otherwise the behavior of the chain will be impacted.

o Chain cover



Remove the Phillips-head screws from the projections near the front and rear freewheels. Place them nearby. Place the chain guard over this area of the tricycle as shown.
Replace the screws and tighten them with a Phillips-head screwdriver.
Rotate the chain to see if it rubs against the cover. If it does, readjust the cover so that the chain moves freely.

o Installing the Foot Pedals



Be careful to use the proper pedal on the proper side. They are marked with the letters L (left) and R (right) on the ends. Screw the pedals into place on the appropriate side.

Secure them tightly using a multifunctional wrench if needed.

Test that the chain turns smoothly while using the pedals, and adjust as needed.

o Installation of front mud plate



(style 1)

(style 2)

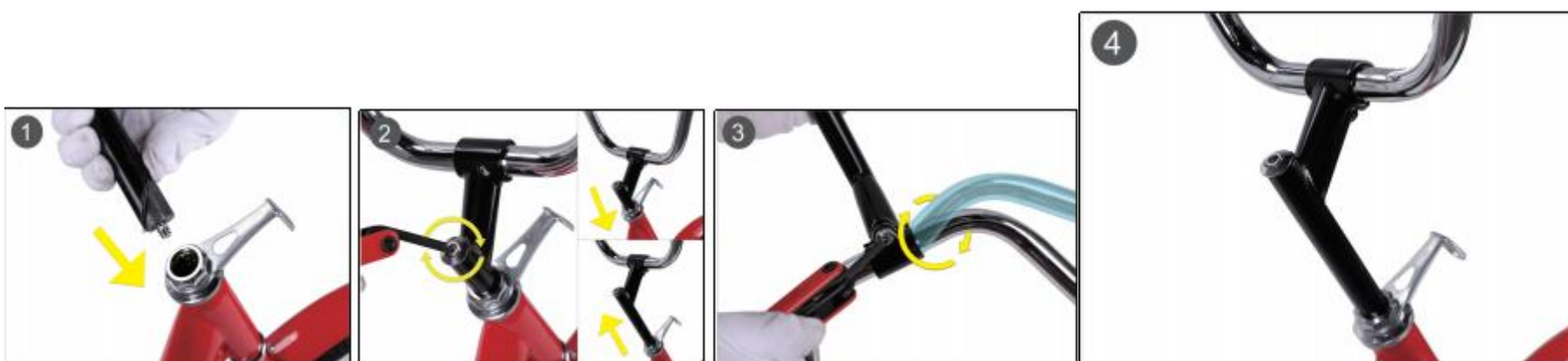
Loosen the fixing screws of the front brake, insert the front fender into the screws, and tighten the screws with a wrench.

o Front wheel installation



Install the front wheel to the frame according to the steps shown in the figure, pay attention to insert the safety hook into the slot, and tighten the nut with an open-ended wrench, as shown in Figure 2 (1, 2, 3)

o Installing the Handlebars



Loosen the bolt on the top of the handle.

Insert it into the frame (Figure 1).

Adjust the stem forward.

Tighten the bolts with a mm hex wrench. (Figure 2).

Place the handle in the middle of the valve stem and valve stem.

Replace with a 6 mm hexagon wrench

Tighten the bolts connecting the valve stem and bonnet.

Adjust the handle to ensure its correct position.

Replace the belt buckle and bolt,

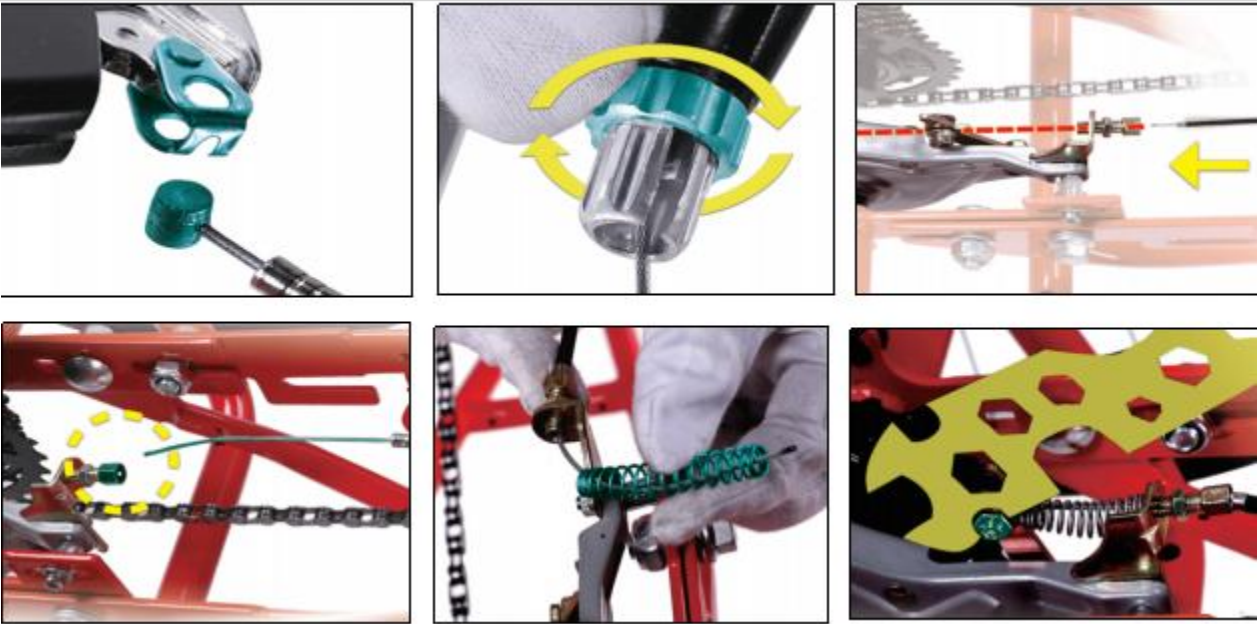
And tighten with a 6 mm hexagon wrench.

10.Installing the Front Brake



Pass the round metal head of the front brake cable through the left brake handle. Secure it to the brake handle by rotating the fastener. Feed the cable’s black outer casing into the brake handle. Pass the other end of the brake cable into the barrel adjuster and cable clamp. Feed the cable’s black outer casing into the barrel adjuster. Straighten the brake cable and tighten the bolt with a 5 mm hex wrench. If you find that the gap between the fork and the wheel is uneven, loosen the two nuts as shown and adjust the brake pads until they are properly centered.

o Installation of rear brake

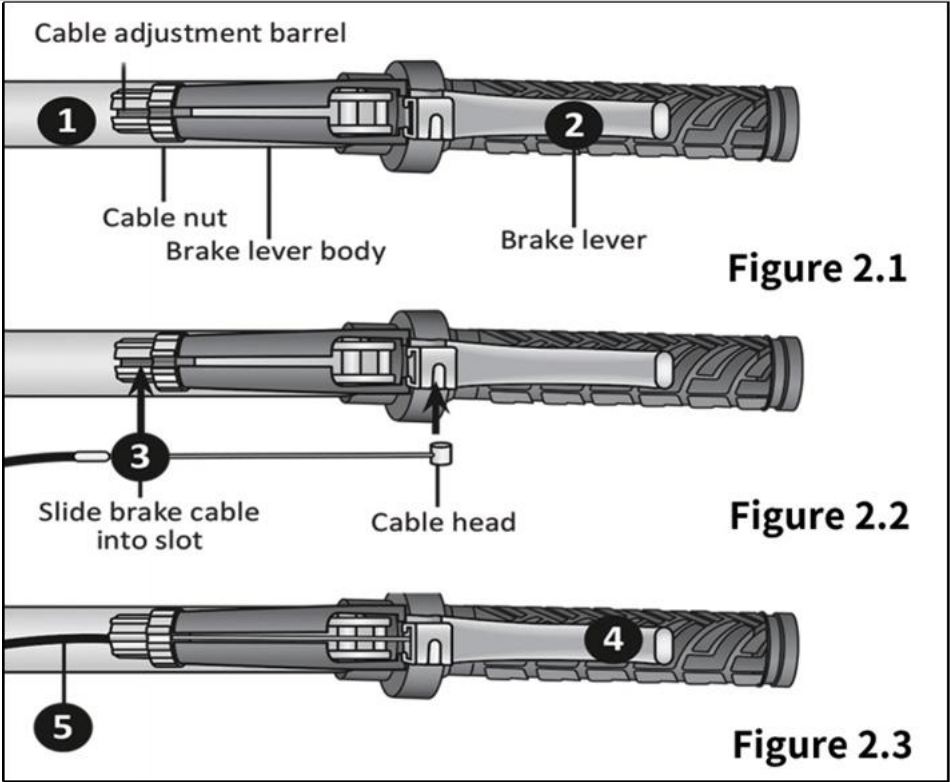


Bicycle front brake debugging

Connect the brake cable to the brake lever

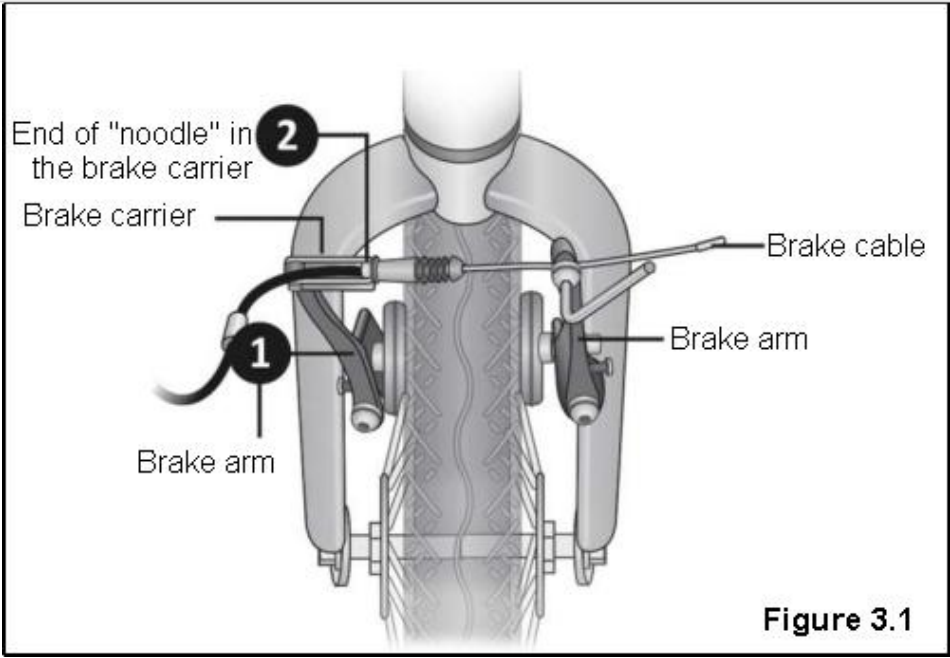
If the brake cable is not connected to the brake lever, perform the following steps:

- ③ Rotate the cable adjusting barrel and cable nut, until the groove is aligned with the groove on the brake rod body.
- Figure 2.1
- ④ Press the brake lever towards the handle.
- ⑤ Slide the brake cable into the groove, and put the cable head into the brake lever. Figure 2.2
- ⑥ Release the brake lever. Figure 2.3
- ⑦ Gently pull the cable, rotate the cable nut and cable duct, make it no longer aligned



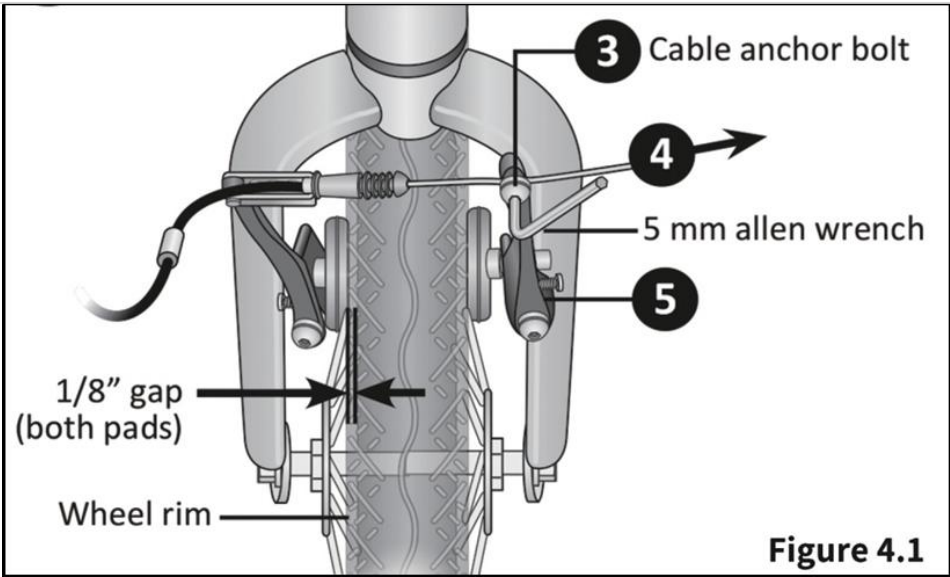
Connect the brake cable to the brake lever

- ① Squeeze the two brake arms together, until the brake pads contact the rim. Figure 3.1
- ② With your other hand, pull the brake cable and pull the "cable" insert one end of the brake bracket into the brake bracket



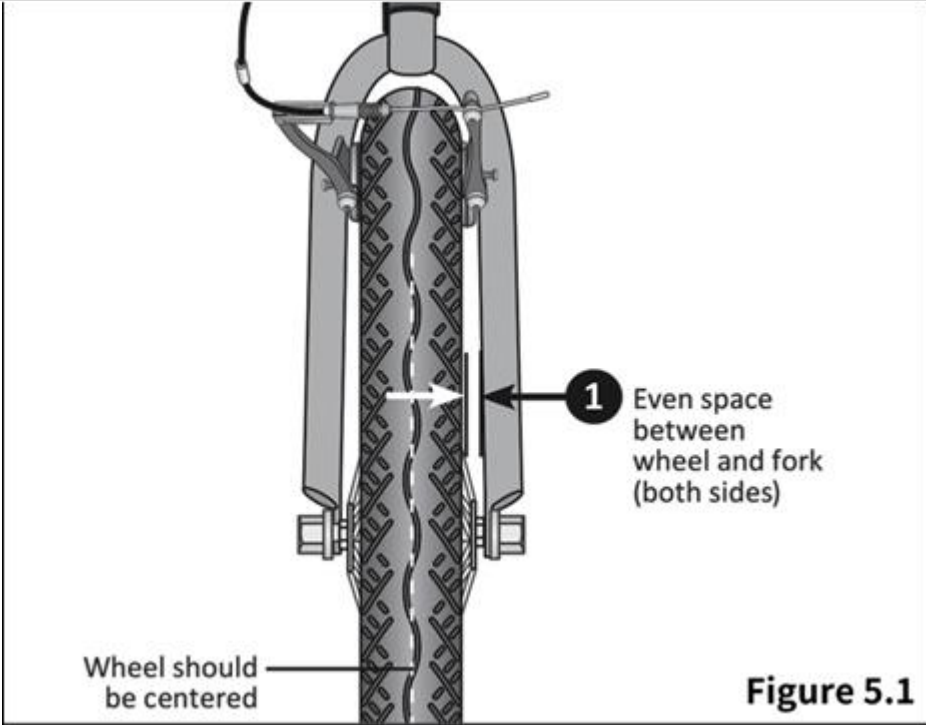
Adjust the brake pads

- Check that the brake cable is in the brake lever. Use a 5 mm special-shaped wrench
- Fully loosen the anchor bolts of stay wire, allow the brake cable to move freely. Figure 4.1
- ② Thread the brake cable through the cable holder, move the left brake arm towards the rim, clearance between brake pad and rim approximately 1 / 8 "(3 mm).
 - ③ Move the right brake arm to the rim, Until the clearance between brake pad and rim approximately 1 / 8 "(3 mm).
 - ④ Using a 5 mm special-shaped wrench, fully tighten the cable anchor bolts.



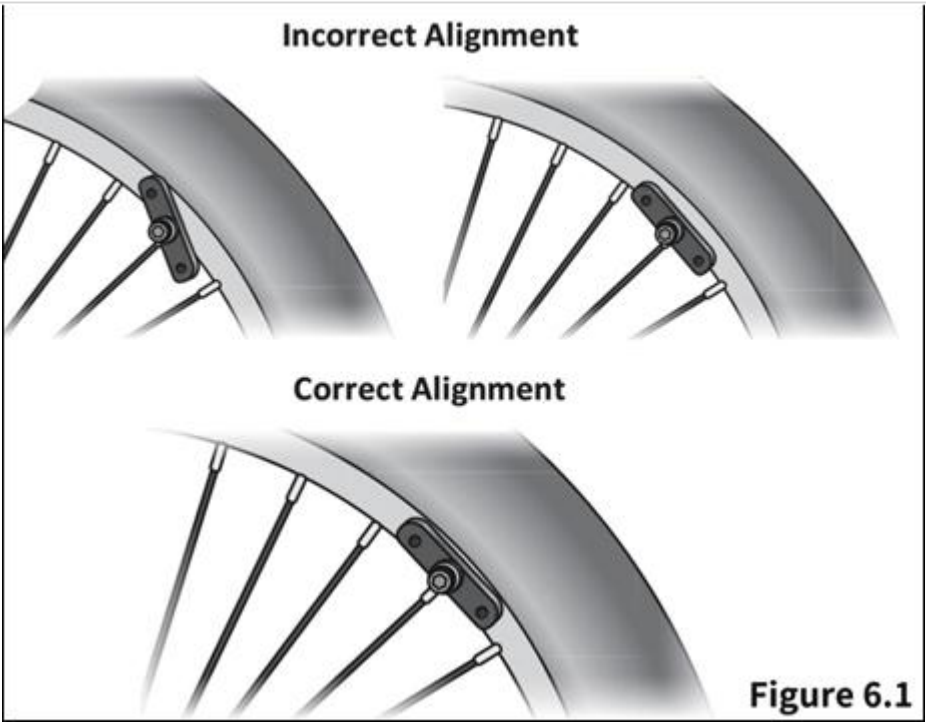
Place the brake pads in the middle

Turn the wheel and look directly down at the rim clearance between brake pad and fork.
If the gap between them is found to be uneven, it indicates that the wheel
The brake pads or both are not centered.
① If a gap between the fork and the wheel is found uneven clearance, loosen the axle nut and adjust the wheel, until it is centered. Figure 5.1



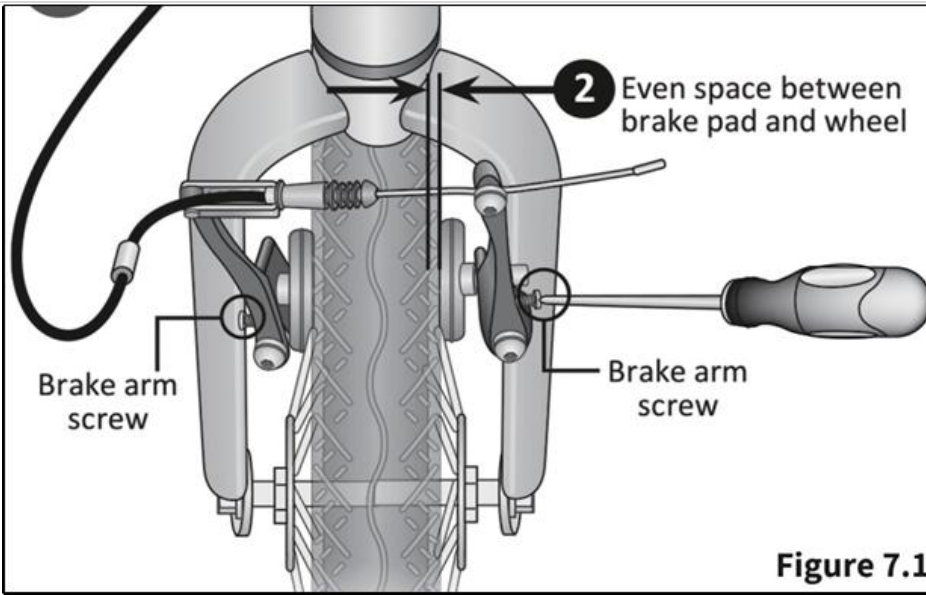
Adjust the brake pad positioning

Check that all brake pads are correctly aligned. If not, use 5 mm screws, and loosen the bolts sufficiently to reposition the gasket.
Position the pad so that it is evenly centered on the rim. After the gasket is correctly positioned, retighten the bolts.
Figure 6.1

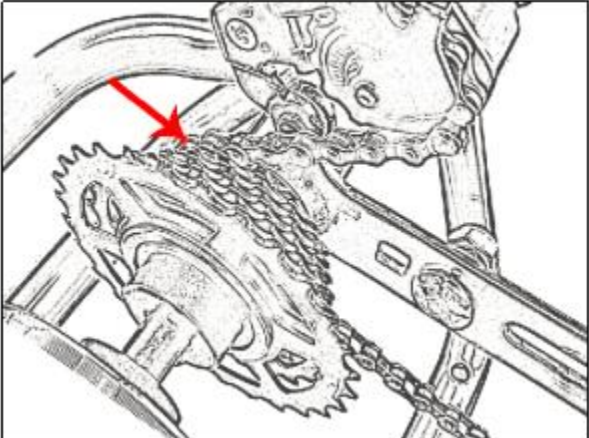
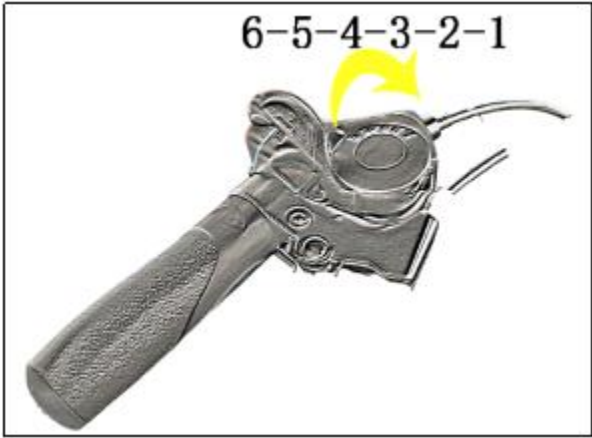


If there is clearance between the brake pad and the wheel uneven clearance,

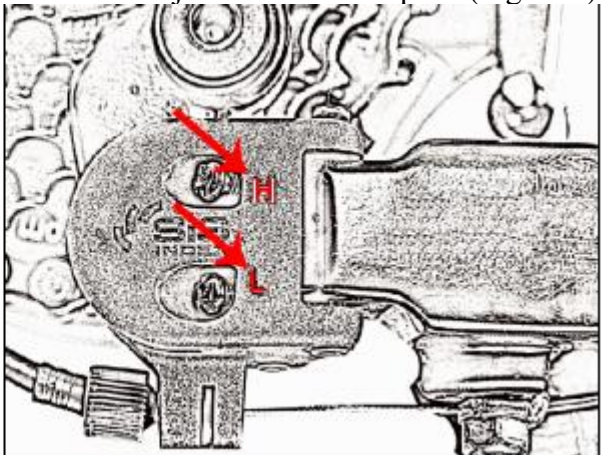
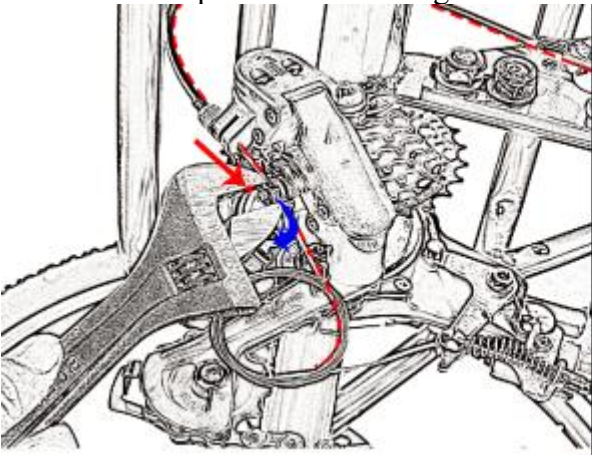
Adjust the position of the brake pads. Adjust the brake arm with a cross screwdriver
Brake arm screws on both sides.
Note: turn the screw clockwise
Keep the washer away from the rim.
Turn the screw counterclockwise.
Move the pad towards the edge. Figure 7.1
② From the mat closest to the edge or
Start with moving the abnormal side.
Turn the screw so that the pad is facing or away from the rim.
③ These screws should be adjusted slightly,
A quarter to a half turn at a time, then activate after each adjustment.
Check the brake lever three to four times.
If you keep adjusting the screws, unless you have obvious exercise, otherwise you will lose your adaptability.



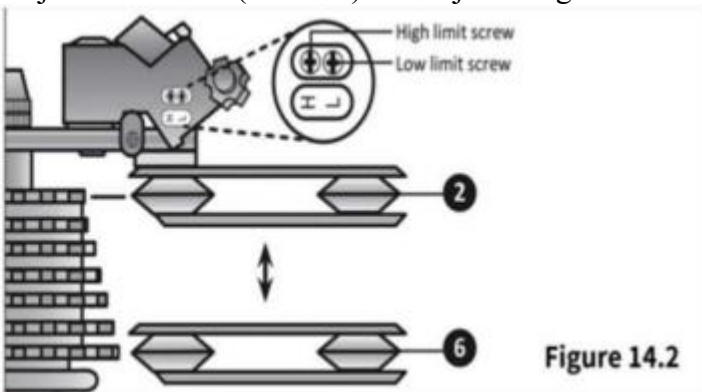
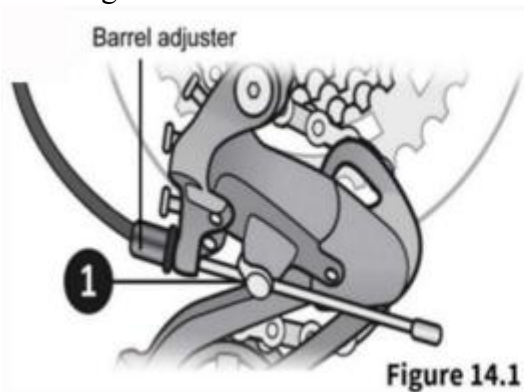
Adjustment method of speed change



- 1.Special attention: when installing the transmission, adjust the front shift lever to the sixth gear (Figure 1)
2.The chain stops on the smallest gearfront shifter should be adjusted to the 6th speed.(Figure 2)



- 3.Pull the cable to the tightest and tighten the nut.(Figure 3)
4.If the gear is not accurateUse the tool to adjust the screws (H and L) and adjust the gear accuracy(Figure 4)



If there is a shifting fault, adjust by screws (H and L).

Adjusting the Rear Derailleur

The low limit screw determines how far the rear derailleur will travel toward the wheel of the bicycle, while the high limit screw determines how far the cage will travel away from the wheel.

1. Shift the rear shifter to largest number indicated, disconnect the rear derailleur cable from the cable anchor bolt and place the chain on the smallest sprocket. Figure 14.1
2. Adjust the high limit screw (H) so the guide pulley and the smallest sprocket are lined up. Figure 14.2
3. Reconnect the cable, pull out any slack, and retighten the anchor bolt securely.
 1. Shift through the gears, making sure each gear achieved is done quietly and without hesitation. If necessary, use the barrel adjuster to fine tune each gear by turning it in the direction you want the chain to go. For example, turning clockwise will loosen the cable tension and move the chain away from the wheel, while turning counter-clockwise will tighten cable tension and direct the chain towards the wheel.
 2. Shift the rear shifter to the gear one and place the chain on the largest cog.
 3. Adjust the low limit screw (L) in quarter turn increments until the guide pulley and the largest cog are aligned vertically.
 4. Again, shift through each gear several times, checking that each gear is achieved smoothly. It may take several attemptbefore the rear derailleur

12.Installing the Rear Brake



Note:The two rear lights and fenders are the same and can be used interchangeably. Remove the nut from one rear light. Place it nearby.



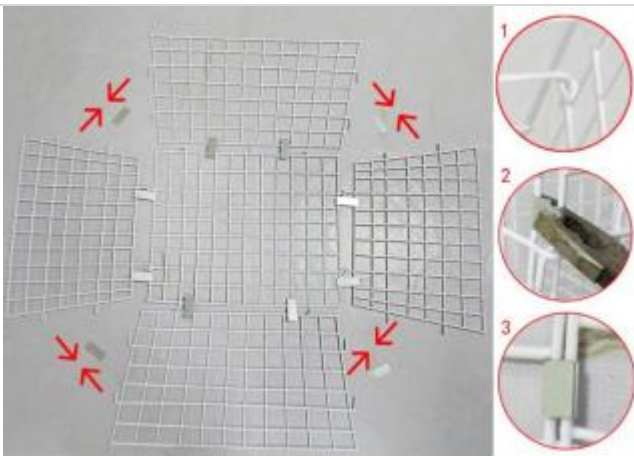
Place that rear light in a convenient place on a rear fender. Replace and tighten the nut.
 Install the other rear light following the same steps. Remove the screws and nuts from the fender supports.
 Secure the supports to the fender with the screws and nuts using a Phillips-head screwdriver and a multifunctional wrench. Remove the nuts, washers, and bolts on the rear fender. Place them nearby.
 Make sure the slots on the fender align with those on the rear axle. Replace the nuts, washers, and bolts and tighten.
 Pop on the wheel cap.
 Install the other rear fender following the same steps.
Caution:If the fenders are not properly positioned, loosen the nuts, adjust, & retighten.

13.Installation of bell, mirror and cushion



We usually use a cross screwdriver to fix the clock, but there is a trend that the locating pin is replaced by a quick release. With quick release, you only need to move the quick release lever to tighten the seat column (Figure 3: correct fixation). Observe the position of the safety wire on the seat pillar. It is dangerous if the safety wire is exposed after being fixed.

14. Installation of vegetable basket



- 1.The display of the connection
2. Fix with 12 metal pieces (J). Note: Need to use pincer pliers and gloves to prevent injuries
- 3.The effect after fixing. All the required parts are in this picture. The basket is made up of 5 separate parts. Connect them in the direction of the arrow



Put the basket first, then the two long washers. Make sure the screw holes are aligned. Remove the pre-assembled screws, insert 4 screws from the long gasket through the frame, Tighten the nut with a wrench

Handling of common problems

During transportation of brand-new bicycles, the chain cover bracket may be deformed. In order to make better use of the bicycle, you can hit the bracket with a hammer to adjust the correct position. (shown below)



The frame may be deformed during the transportation of brand-new bicycles. In order to use the bicycle better, you can correct the frame with a wrench without affecting the use.



The inner tubes of a brand-new bike may be sandwiched between the rims and outer covers of tires. If you are riding the bike for the first time, please make sure that you don't see any inner tube outside before you inflate them

Tips:
When driving at high speed for the first time, test the braking system and make sure all screws are firmly tightened. Apply anti-rust paint to the tricycle, especially if you live by the sea, regular maintenance will extend its useful life. Check and ensure all screws and parts hold firmly after the first 30 days.

CONTACT US
Thank you for your purchase. If you have any problems, please feel free to contact our store customer service, we will try our best to solve your problems as soon as possible.