

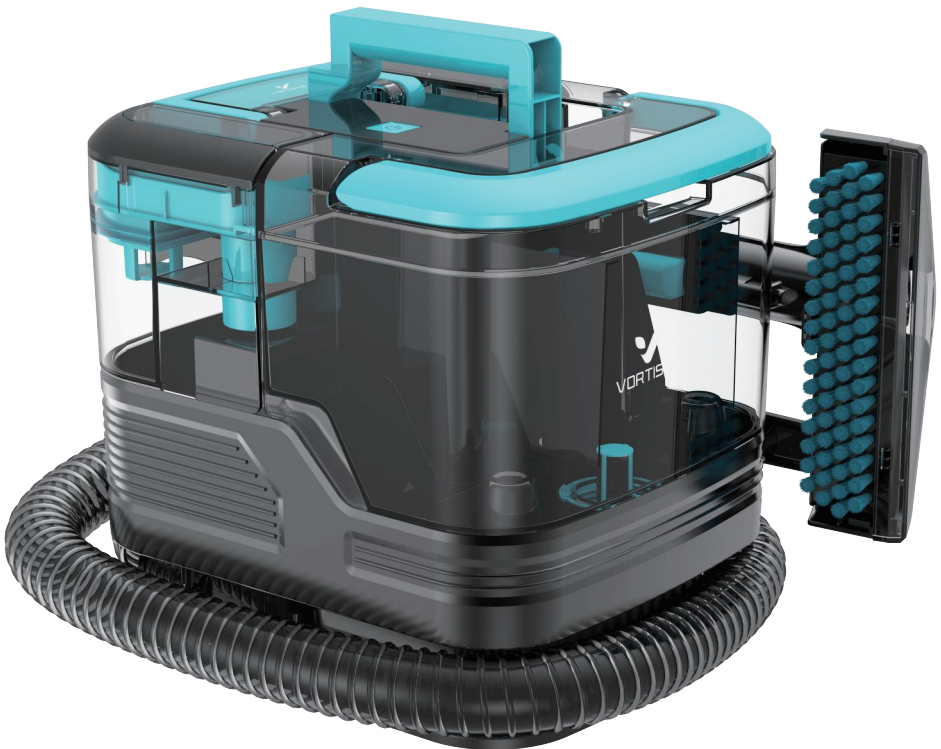


# SPOT CARPET CLEANER

---

## PRODUCT MANUAL

C10



# Table of Contents

IMPORTANT SAFETYINSTRUCTIONS	-----	01
About the use of the product	-----	02
Product Components	-----	03
Product Configuration	-----	04
Assemble and Disassemble	-----	05
Product Parameter	-----	06
Accessories Instructions	-----	06
Daily Use of the Product	-----	07
Self-cleaning	-----	08
Trouble Removal	-----	09
Warranty	-----	09

# IMPORTANT SAFETY INSTRUCTIONS

READ ALL INSTRUCTIONS BEFORE USING YOUR PORTABLE DEEP CLEANER. When using an electrical appliance, basic precautions should be observed, including the following:

## **WARNING TO REDUCE THE RISK OF FIRE, ELECTRIC SHOCK OR INJURY:**

- This machine is not suitable for persons with physical, sensory or intellectual disabilities. People who lack experience and common sense (including children) are not recommended to use the machine unless they are supervised or guided to ensure their safety.
- Do not touch the plug or any charged part of the product with wet hands, so as to avoid the risk of getting an electric shock.
- If the charger or power cord is damaged, stop using it immediately. Please call the company's after-sales personnel for replacement to avoid harm.
- Keep airflow channels, rotating and moving parts of the machine away from long hair, loose clothing, fingers and other body parts. Do not make the vacuum pipe or accessories close to your eyes and ears, or put them in your mouth.
- If you do not use this product for a long time, turn off the power and unplug the charging socket.
- Do not use if the machine can not work properly because of falling, damage, falling outdoors or falling into the water. Contact the company's professional maintenance personnel to repair in time so as to avoid danger and personal injury.
- If found electric leakage, high motor temperature or abnormal sound, such as overheating, abnormal sound, odor, weak suction, etc. when using, immediately stop using and call the company's professional maintenance personnel.
- After the machine is unpacked, please dispose the packing bag immediately in order to prevent children from suffocating.
- Do not place the machine outdoors or in a place where it may be frozen. Do not place the product near a heat source.
- Do not expose the machine to fire or a place with excessive temperature to avoid the risk of damage or explosion.
- After using the machine, please clean the sewage tank in time. Keep the ventilation path unblocked so as to avoid suction drop and motor heating, which will affect the working life of the machine.
- After using the machine, keep it in a dry place, as wet places will affect the insulation and service life of the appliance.
- The machine can not soak in water or rinse because of power setting. Please check the suction nozzle regularly. If there is blockage, please remove it in time to avoid the decrease of suction and affect the performance of the machine.
- Please make sure that the accessory is replaced after shutdown. When the machine fails, do not repair it by yourself. It must be repaired by professional maintenance personnel recognized by our company or please call our after-sales department for help.
- Do not disassemble closed machines by yourself, there are no parts in this machine that can be repaired by the customers and do not attempt to change the performance of the machine, otherwise it will cause danger.
- Using a voltage that does not correspond to the specifications of this product will damage the motor and more likely cause injury to the user. The correct rated voltage is indicated on the nameplate.
- To prevent tripping, the machine should be placed against a wall after using. Do not place any small objects on the air outlet, and do not block it. Remove all the small objects that may obstruct the smooth airflow of the outlet to prevent the machine from overheating.

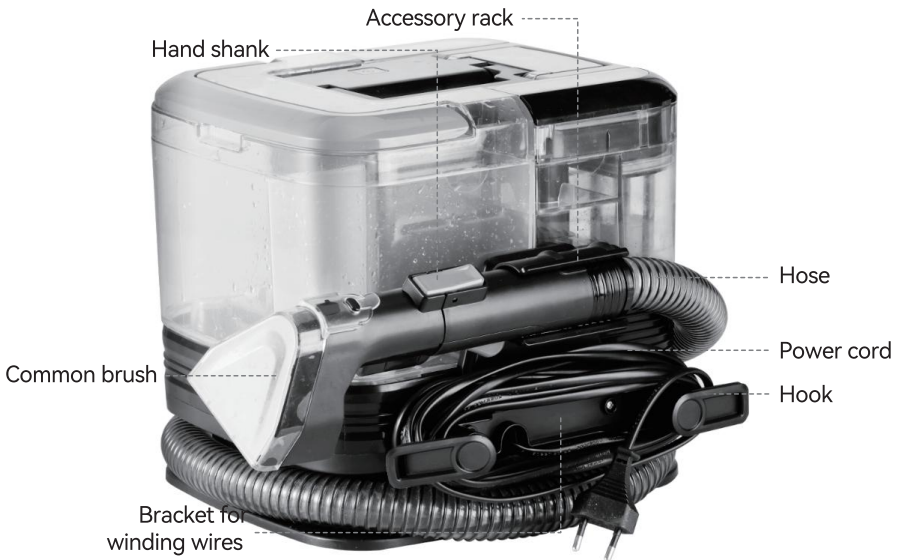
# About the use of the product

- This product is suitable for working on a flat surface such as tiles, especially for cleaning the short plush carpet.
- Do not use this product near or on the surface of flammable and explosive objects, there is a risk of fire and explosion.
- Do not use this product near a working fireplace or heater to prevent deformation of the machine shell.
- Do not work it on high-temperature substances (unextinguished cigarette butts, matches or hot ashes, etc.), ultra-fine substances (such as lime, cement, woodchips, gypsum powder, ashes, charcoal powder, etc.), dangerous substances (such as solvents, descaling agents, etc.), chemical substances (such as acidic substances, detergents, etc.), and other substances with uncertain physical properties.
- Do not use the machine to suck up detergent, kerosene, gasoline, alcohol, paint, perfume, etc. These liquids may cause short circuit of the machine, fire or explosion.
- Do not use the machine to suck up the toner used in laser printers and copiers. These objects may cause fire or explosion.
- Do not use the machine to suck up sharp objects, such as broken glass, small toys, pins, paper clips, stones, plaster, large pieces of paper, etc. These objects may cause blockage and damage the machine.
- Do not use the machine to suck up any burning or smoking objects, such as soot from an unextinguished heat source, burning cigarette butts or matches, etc. Stains with strong grease, stickiness or strong staining, such as shoe polish, paint, pigment, etc., are not in the scope of use of this product.
- Do not use any other detergent than provided.

## About the machine

- Local environmental protection regulations should be followed when disposing of garbage.
- Do not disassemble the closed machine by yourself, there are no parts in the machine that can be repaired by the customer, and do not try to change the performance of the machine, otherwise it will cause danger.
- Using a voltage that does not correspond to the specifications of this product will damage the motor and more likely cause injury to the user. The correct rated voltage is indicated on the nameplate.
- Do not shake the machine up and down or violently bump it so as to prevent sewage from entering the motor.
- When the motor is working, please do not lift or carry the appliance, and do not tilt the appliance to one side or lay it flat so as to prevent sewage from entering the motor.
- To prevent tripping, the machine should be placed against a wall after using.
- Do not use the machine when the clean water tank and sewage tank is not installed properly.
- Do not place any small objects on the air outlet, and do not block the air outlet. Remove all small objects that may obstruct the smooth airflow of the air outlet to prevent the machine from overheating.
- Do not get the machine wet, otherwise there may be fire and electric shock accidents due to short circuit of the machine.
- Water stains may be found in the water tank which is the residue because of delivery inspection. It is a normal phenomenon, please feel free to use.

# Product Components



# Product Configuration



Machine (with Dual-purpose Brush)



Common brush



Dual-purpose brush



Cleaning solution



Self-cleaning head

# Assemble and Disassemble

## • Power cord



Make sure the hook is deployed and wind the wire in one direction.



If you need to remove the power cord, rotate the right hook and remove the power cord.

## • Brush



Insert the brush into the correct position, and the installation is done when hearing the click sound.



Press the unlock button. When you feel it is released, pull it out to remove the brush.

# Product Parameter

Product Name:	Spot Carpet Cleaner
Model:	C10
Rated Voltage(V):	AC 230V 50Hz
Rated Power(W):	530W
Sewage Tank Capacity:	800ml
Clean Tank Capacity:	2000ml
Product Size(mm):	265*220*235mm
N.W(kg):	4.1kg

## Accessories Instructions



**Common brush**  
Bristle brush is used for sofa.



**Dual-purpose brush**  
The dual brush is with both the hair planting and silica gel, and can be disassembled by breaking it upward.  
Align the hole on the machine and press down to install it in place.



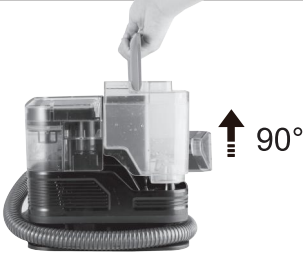
**Self-Cleaning Nozzle**  
Used for machine self-cleaning. Attach it to the brush handle, press the spray button to drain water from the tank and complete the self-cleaning process.

### \* Warm Tips

The machine should be stored in a cool and dry place, away from direct sunlight.

# Daily Use of the Product

1



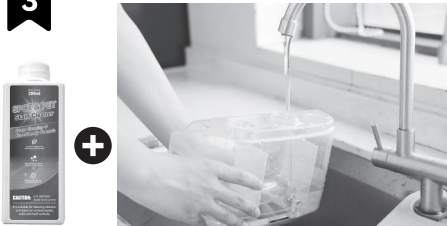
Lift the handle of the clean water tank and remove the tank vertically at a 90-degree angle.

2



Unscrew the tank lid, Remove the water valve.

3



Pour some water and cleaning solution into it.

4



Screw the tank lid, Install the clean water tank back and put down the handle.

5



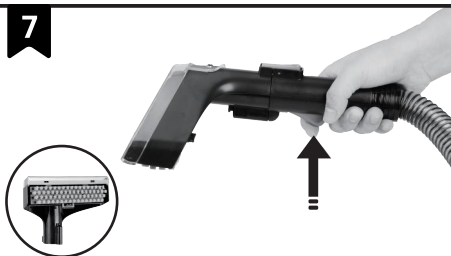
Install the headle. (Tips: Different brushes can be used for different scenarios to achieve the best cleaning results.)

6



Connect the power supply, press the power button to start the machine.

7



Use the brush, press the water spray button, and scrub back and forth over the stained areas of the fabric.

8



After cleaning, unplug the power cord and store the machine properly.

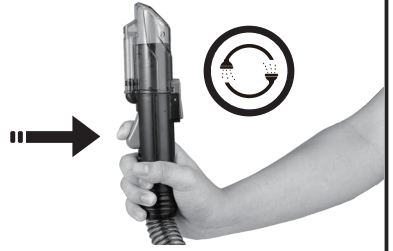
# Self-cleaning

1



After use, Install the self-cleaning head.

2



Press the spray button until it runs out of water.

3



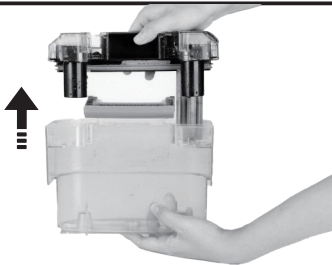
Unplug the power cord, Rotate the handle 90° and remove the sewage tank vertically.

4



Continue to press down the handle more than 90°, the sewage tank top cover will be jacked up.

5



Remove top cover of the sewage tank.

6



Clean the sewage tank and top cover of the tank with water.

7



After drying, then place it back vertically into the machine.

8



Wind the hose around the machine, secure the accessories in their slots, and store it.

# Trouble Removal

If you find some abnormal conditions during the use of the machine, you can check and eliminate them according to the table below.

<b>Problem</b>	<b>Inspection item</b>
The machine does not work.	Check if the power is on.
The sewage tank has reached its designated capacity.	Take out the sewage tank, dump the sewage and then use it again.
The water spray nozzle does not spray water.	<ol style="list-style-type: none"><li>1. The water pipe is long, please wait patiently. Water usually comes out within 5 seconds.</li><li>2. Check whether there is water in the clean water tank.</li></ol>
The machine stop working.	<ol style="list-style-type: none"><li>1. Check whether it is short of water in the clean water tank , please add water if water is shortage.</li><li>2. If the machine is used for a long time, please leave to set for a while before using it again.</li></ol>

# Warranty

**NOTE: THIS WARRANTY TERM GIVES YOU SPECIFIC LEGAL RIGHTS, AND YOU MAY ALSO HAVE OTHER RIGHTS WHICH VARY FROM STATE TO STATE.**

## **12-month Warranty & Lifetime Customer Support**

Only apply to eligible purchases made directly from the authorized distributors  
Warranty coverage applies to the original owner and to the original product only and is not transferable.

## **Warranty Notice**

If the product fails during the warranty period and can not be eliminated after checking the common faults according to the instructions, please contact your seller in time.



VORTISYS



MADE IN CHINA