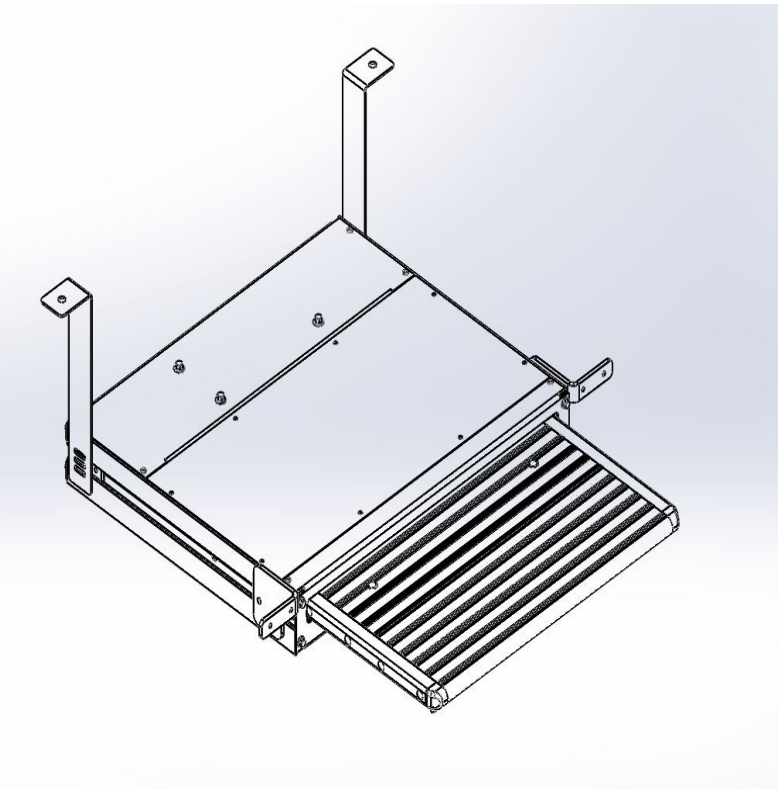
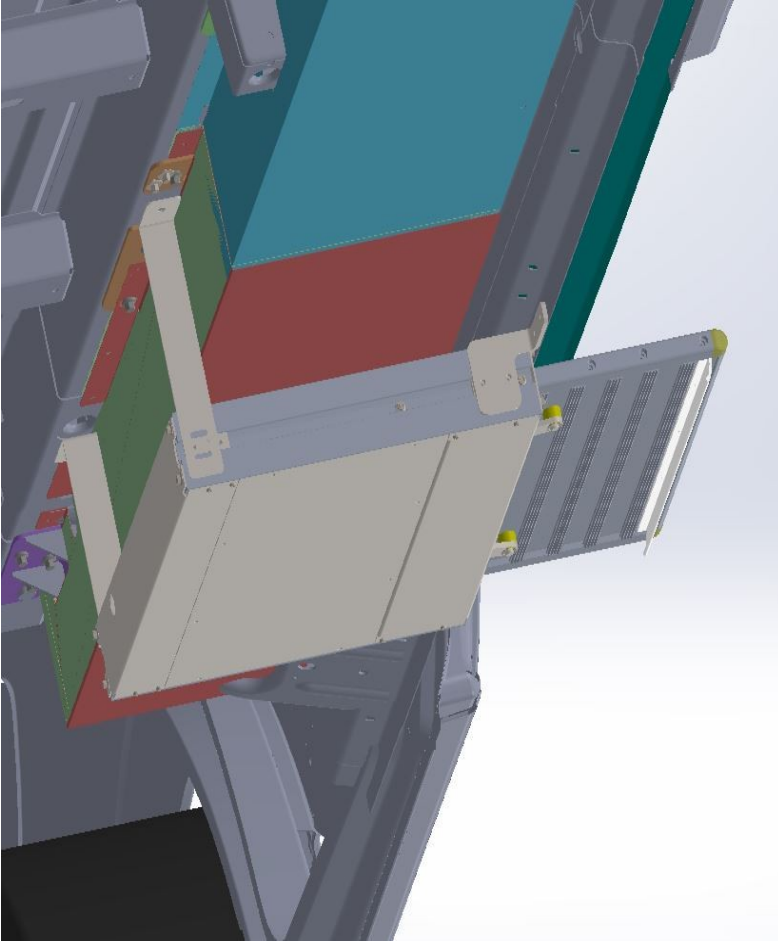


NEW PRO + STEP



INSTALLATION TIME

1 – 2 HOURS

Professional installation
recommended

DIFFICULTY LEVEL

1

2

3

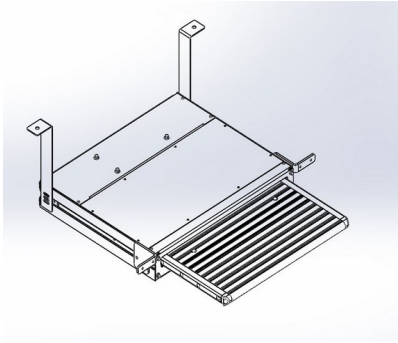
4

EQUIPMENT LIST

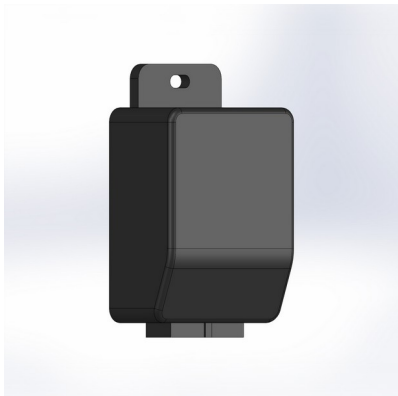
- Protective glasses
- Ratchet wrench and arms
- Cable stripper
- Allen key utensil
- Electrical insulating strap
- Pliers
- 8 mm spanner
- 13 mm spanner
- 10 mm spanner
- Drill
- 10 mm drilling bit

WARRANTY PERIOD

2 YEARS



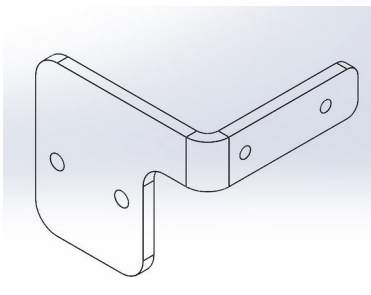
Step



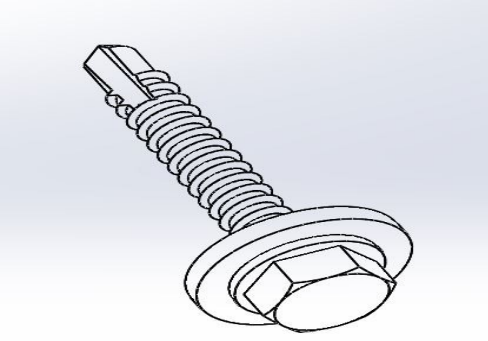
Control Unit



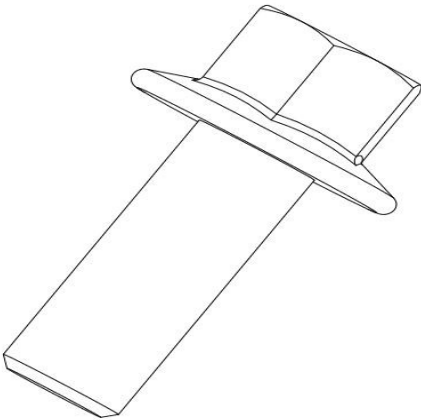
Rear Connection Bracket



Front Connection Bracket

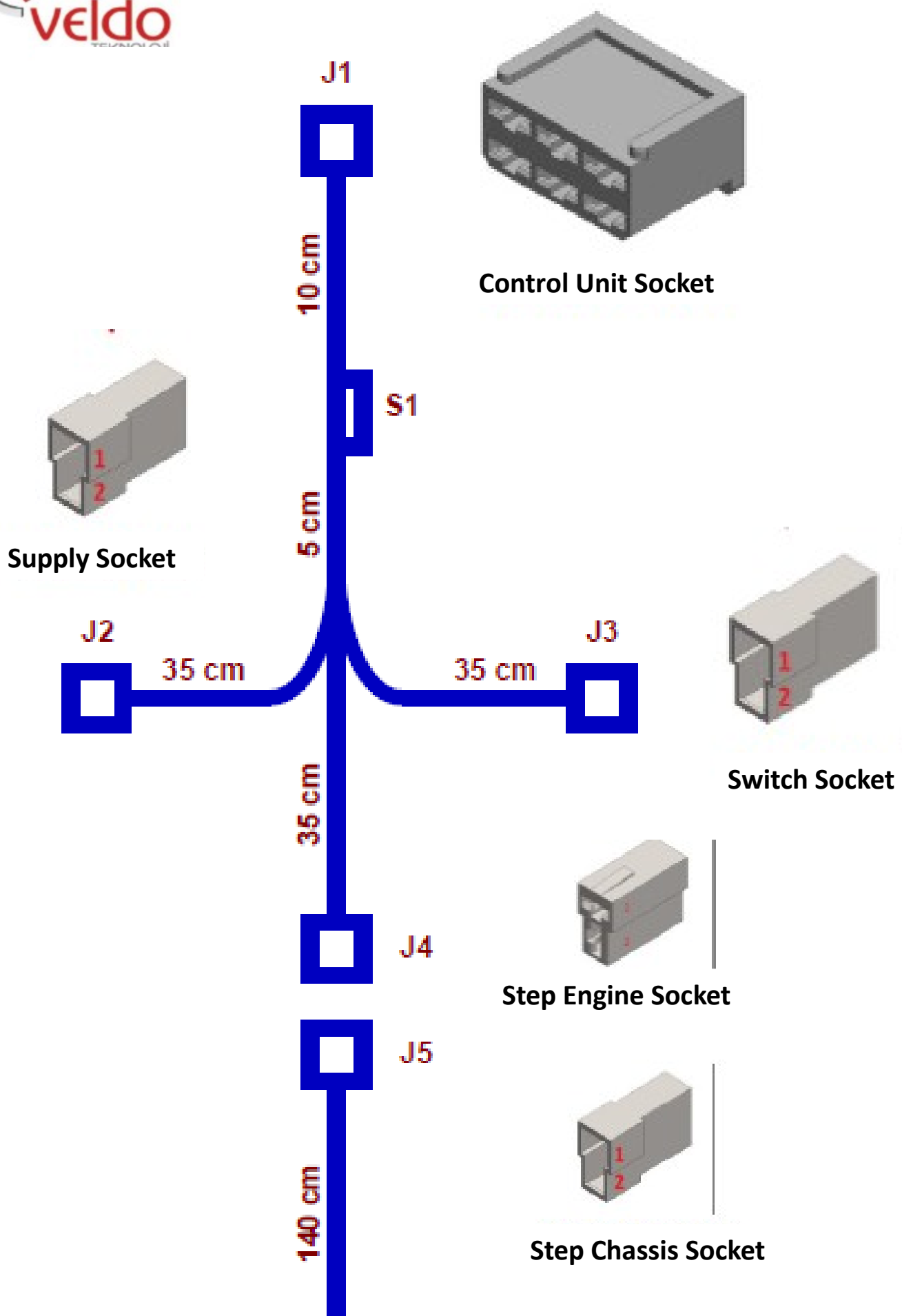


M5x32 trapezoid screw



Front and rear step connection bolt M6x16

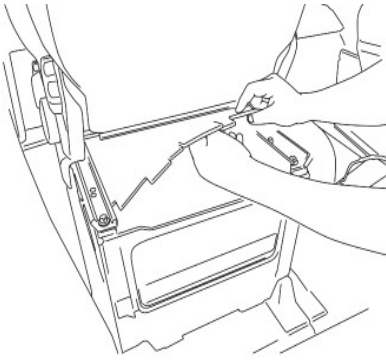
Template





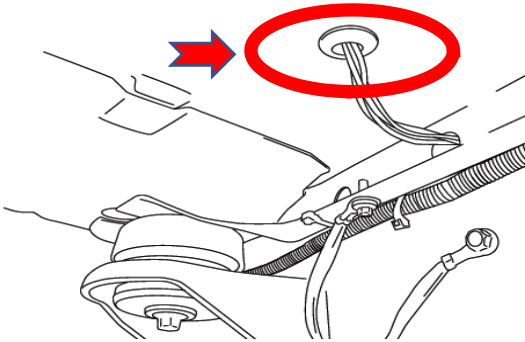
Before installation, the fuse on the installation is removed from the place. !!!!

1



Wiring and control unit installation is made in the compartment under the front passenger seat.

2



For connections of the installation under the vehicle, the installation is taken from the hole under the front passenger seat to the underside of the vehicle.

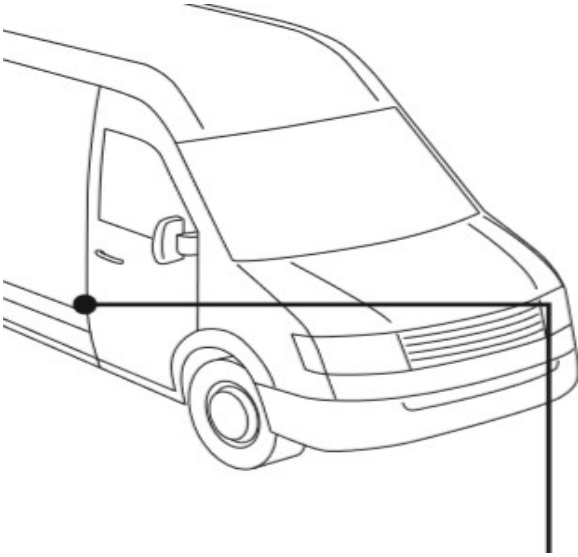
****** In vehicles that do not have holes, drilling must be done to pass the installation.

3

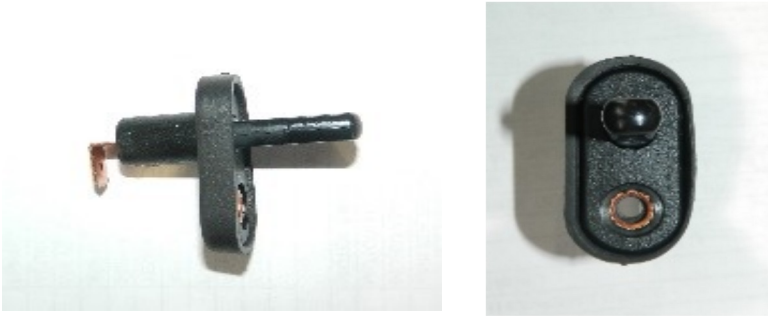


Ø38mm punch ile delme işlemi yapılır.

4

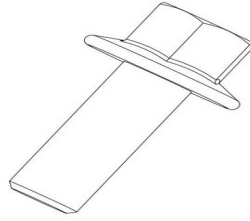
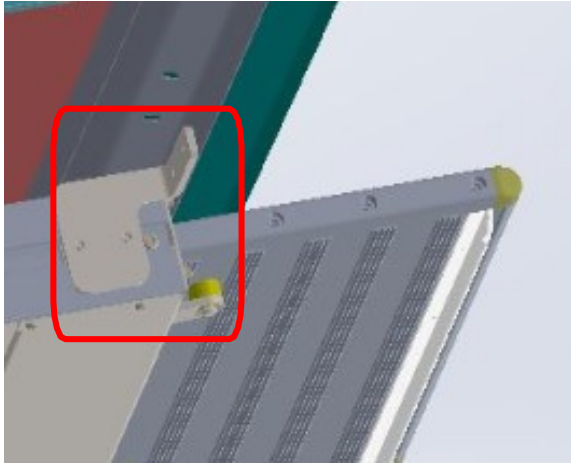


Middle and front door switch connections are made to the region seen in the picture.



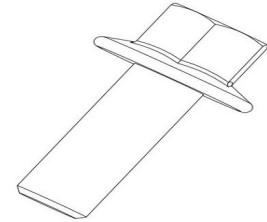
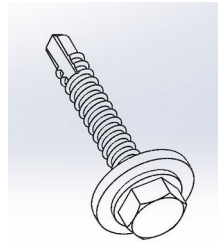
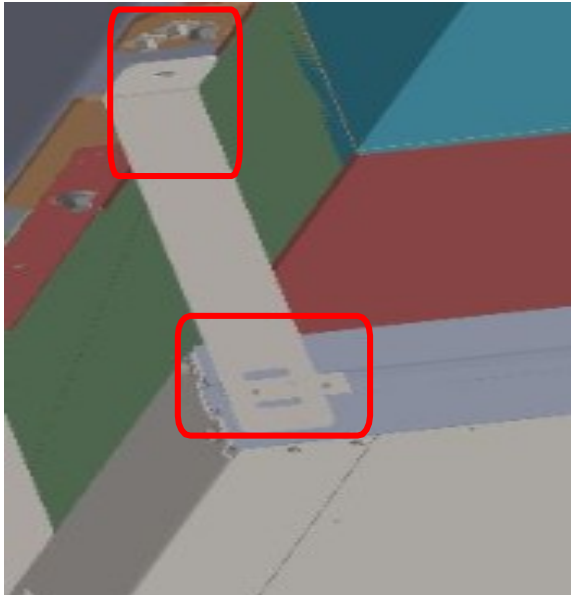
For switch mounting, Ø 11 mm hole is drilled.

With the smart mounting screw, the assembly is done.



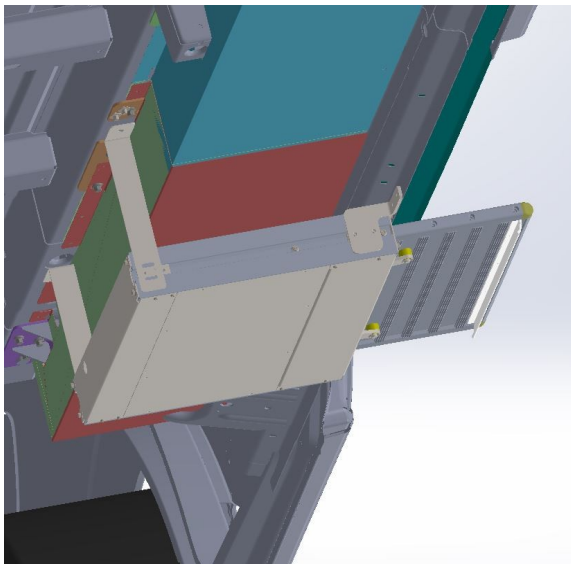
For the front carrier foot connection, the vehicle's original chassis hole is used.

1



For the rear carrier foot connection, the vehicle's original chassis hole is used.

2

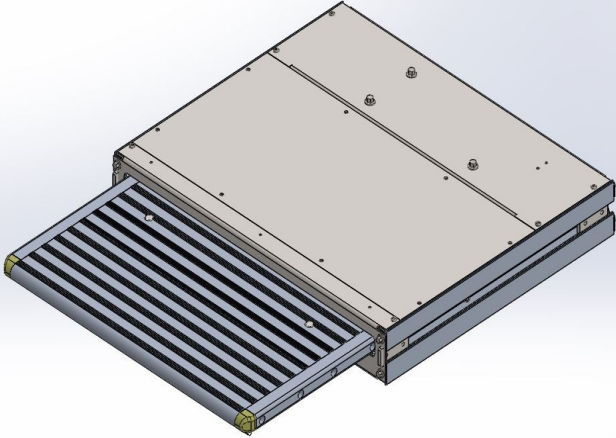


The completed version of the front and rear carrier foot connection is as in the picture.

3

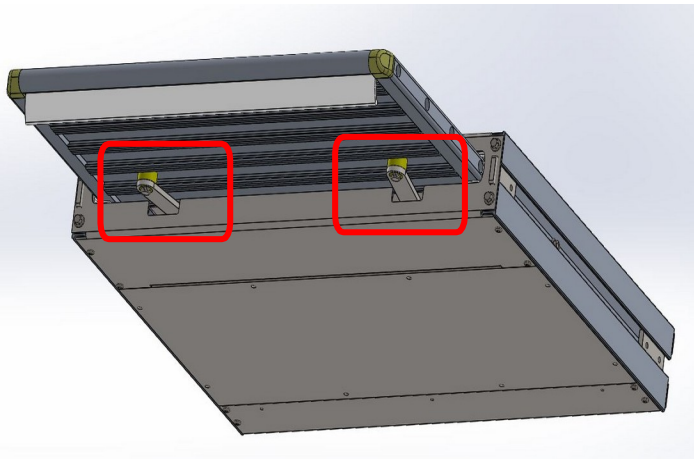
If the step is opened and does not close (due to any faults or factors)

1



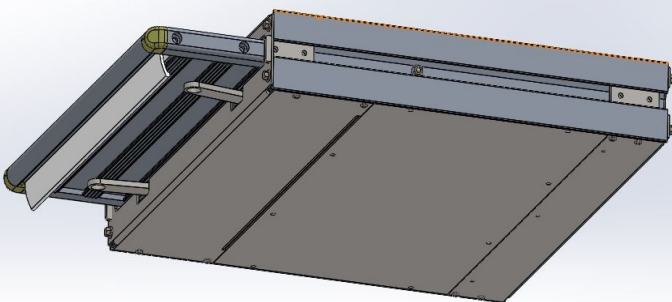
The connecting U_clips of the feet below the Step are removed by hand.

2



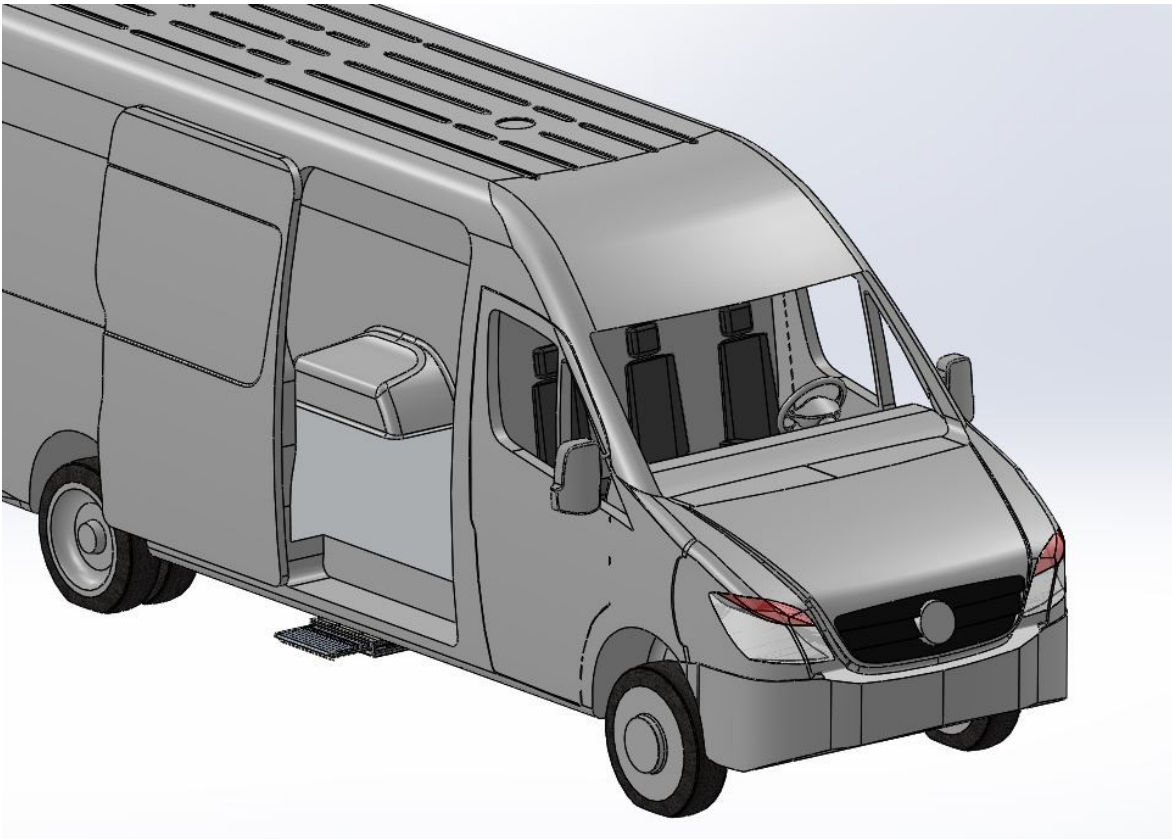
The step that remains open can be closed by hand by removing the U_clips.

3





When starting installation, replace the fuse that we have removed from the installation. After replacing the fuse, check the step operation.



WARRANTY

The warranty written on the v-Board “Veldo Warranty Certificate” is valid for 2 years from the start date. Veldo Warranty Certificate is given to the customer , during product delivery . Our customers are required to present this document in order to make use of the warranty process. To make free use of warranty transactions; the customer shall notify the customer of the failure in writing to Veldo Teknoloji Makine Üretim Sanayi Ticaret A.Ş authorized dealer or service or Veldo Teknoloji Makine Üretim Sanayi Ticaret A.Ş. Veldo Teknoloji Makine Üretim Sanayi Ticaret A.Ş cannot be held responsible for any failures that are not notified in writing. The customer accepts the damage caused by the failure. The warranty period for the product that was changed during the warranty period is limited to the remaining warranty period for the product that was purchased. Veldo Teknoloji Makine Üretim Sanayi Ticaret A.Ş authorized dealer / service or Veldo Teknoloji Makine Üretim Sanayi Ticaret A.Ş report will be able to repair the failure if it is determined that it is not possible, a free replacement will be made. After delivery of the product to customer, incorrect handling (impact, drop, impact), improper and inadequate care misuse use, use of the product in extremely humid, dusty or hot environments or use of the product in corrosive, corrosive environments, accident, shock, electricity (voltage changes), failures caused by natural disasters, as a result of (wearing) normal use and the nature of the material, malfunctions caused by insects or animals causing damage to the product or the cables of the product are not considered under warranty.

WARNING

Ensure that the product is installed by following the instructions given when installing it. Failure to do so could potentially endanger the occupants of the vehicle. After installing or re-installing, check again to make sure the product is working properly.