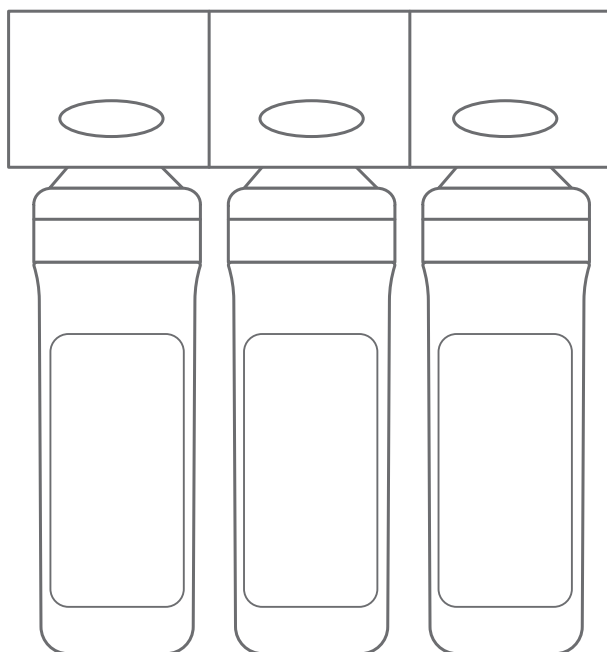


# pureal

## ~~UTO~~



[www.purealglobal.com](http://www.purealglobal.com)



### **Slim design**

Can be harmonized with any place by Luxury & Slim design



### **Easy filter replacement system**

Everyone can replace filters by easy & quick filter replacement system



### **Optimum filter solution**

High quality filter system with best performance



### **No electricity needed & No noise**

No worry about electricity bill and noise

1. Notice for the correct and safe use .....	4
2. Name of Each Part (Working Drawing) .....	5
3. Preparation before the installation .....	6
4. Installation .....	7
5. How to replace filters .....	12
6. System Maintenance .....	13
7. Check before reporting the failure .....	14
8. Product Specification .....	15

### Warning

If the instructions are not followed, considerable physical injury or property damage may occur.

### Caution

If the instructions are not followed, light physical injury or property damage if not kept the instructions.

### Warning

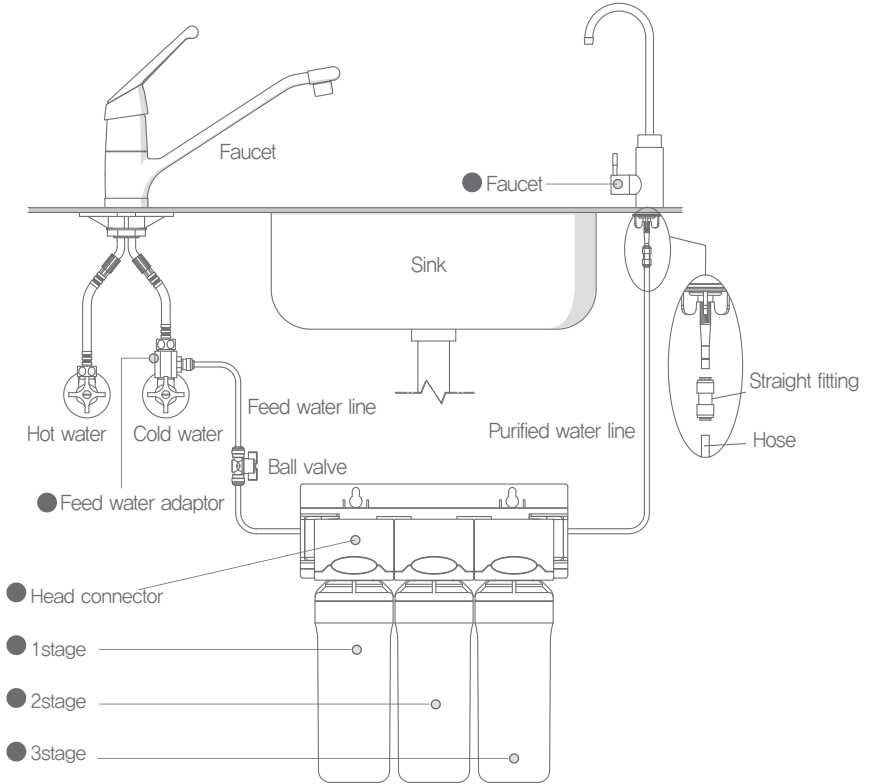
- Never disassemble, repair or reconstruct.
  - ▷ This may cause failure.
- Never press the push button or twist filters while using the product.
  - ▷ This may cause failure due to high water pressure.
- Do not install near radiators.
  - ▷ This may cause fire, or the product could be damaged, resulting in the leakage.



### Caution

- Do not install on uneven surfaces and not apply too much force to the item.
  - ▷ This may cause physical injury or breaking of the product.
- Lock the feed water supply valve if it has not been used for a long time.
  - ▷ Especially, during holiday season, the water pressure will rise and it may cause leakage.
- To drink clean water, replace the filter according to the filter replacement period.
  - ▷ If an exhausted filter is used, the function of purification could be lowered.
- When replacing the filter or moving the product, do not pull the water supply hose.
  - ▷ The water supply hose may be removed or the coupling may be weakened.
- If leakage occur while using the product, or the area around the product is wet, lock the raw water supply valve immediately.

## ● Water flow diagram



## ● Rear view

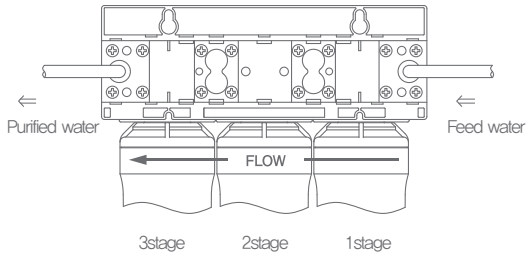


Figure 1. Water flow map



## Caution

- Read User Manual before installing the product.
- This product is a home purification system using tap water as raw water.
- The feed water exceeding the use requirements of this product needs pretreatment.
- Do not use water which is not safe biologically or has not been sterilized properly.
- The adaptor of raw water is PF1/2" screw. Check the screw specifications of the raw water line.
- For water service systems that are different from Figure 1, contact A/S center to ask help for installation.

## 4.1 Identification of components

※ Make sure that all the components are provided.

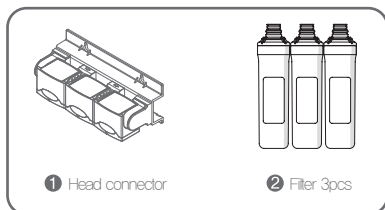
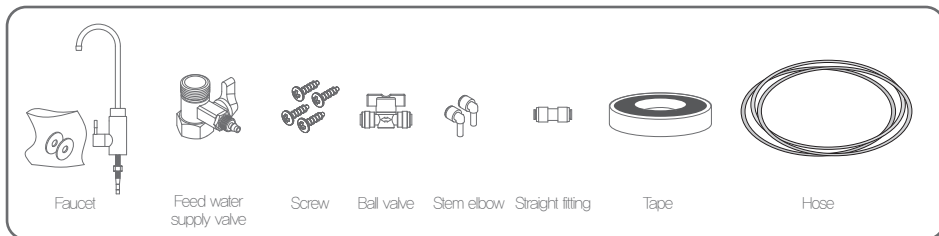


Figure 2. Components

- Installation materials are separate components.
- For installation materials that are not provided, please use parts that meet the hygiene and safety standards for the parts that come into contact with water.

※ Installation Materials



## 4.2 Installation Location Checking

### 1. PnP Filter System installation

It can be installed at a convenient place under a sink. However, this product should be installed within 4ms from feed water supply valve and faucet.

### 2. Faucet installation

Install at a convenient place on the upper part of a sink. However, there shouldn't be any obstacle in the space under a sink where the faucet is installed.



## Caution

- Keep to the minimum distance so that the hose connected between components is not bent or twisted.
- Do not install in any place that is lit by direct sunlight or exposed in the frozen status.
- Be sure to install in a convenient place for filter exchange or maintenance.
- When moving or lifting the product, make sure the filter remains vertical.

## 5.1 How to connect the hose between components

The connection of the hot/cold water supply line, head connector assay, and the purified water faucet can be completed simply just by using one touch fitting.

### ※ How to use one touch fitting

Fitting is the structure where the part called 'collet' is inserted in the body as shown in the figure below. The inside of the collet is shaped like a fishing hook that helps the hose to stay inside to be removed if inserted.

1. Push the hose in the part assembled with collet deeply and connect (Figure 3-1, 3-2).
2. When removing the hose, pull the hose by pressing the collet as shown in Figure 3-3.

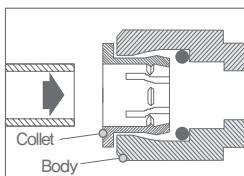


Fig. 3-1: Insert the hose into the collet.

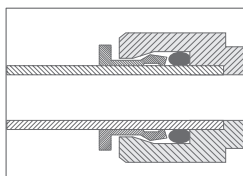


Fig. 3-2: Push the hose into the bottom of the fitting.

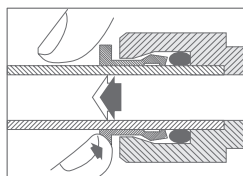


Fig. 3-3: When removing the hose, complete the task by pressing the collet.

Fig. 3. How to use one touch fitting

## 5.2 How to install the inlet valve



### Caution

- First, check the screw standard of raw water supply line under a sink. The screw of this valve is PF1/2" standard screw. (If the standard is wrong, never construct it.)
- Be sure to install the valve in the cold water side of the raw water line. If installed in the hot water side of raw water line, the purification system shall be damaged or the function can be disabled or broken.

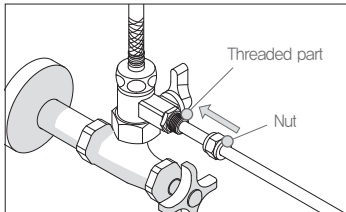
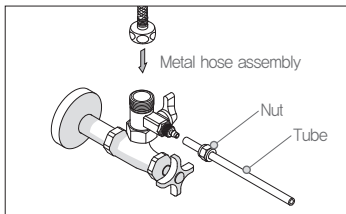
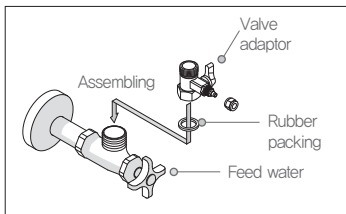
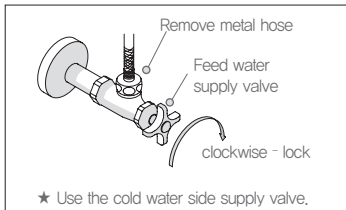


Fig. 4. Installation of the feed water adaptor

1. Close the feed water supply valve in the cold water side feed water line.
2. Remove the metal hose that is connected with the sink hydrant.
3. Assemble the feed water adaptor and valve as shown in the figure. (Be sure to insert the rubber packing)  
\* if necessary, wind the tape around the feed water pipe and the valve assembly.
4. Assemble the metal hose again on the assembled raw water adaptor.
5. Insert the Nut into the tube.
6. Insert the Tube into the Screw Thread, push the nut into the end and lock the Nut.



Caution : Do not open the feed water supply valve yet.

## 5.3 Installation of purified water faucet

### ※ Notices regarding selecting the location



#### Caution

- If there are obstacles in the open area under a sink, it is not possible to install a faucet. Be sure to check the lower part of the sink in order to install a faucet.

1. Drill the positioning hole (diameter 3~5mm) using a drill. (Fig. 5-1)

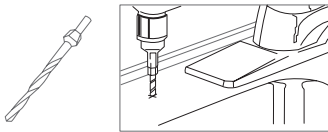


Fig. 5-1. Positioning hole drilling

Caution : Use a strong speed drill for this work

Caution : Avoid a fast RPM during first drill operation. There may be dangerous as chips or pieces can be scattered.

2. Install the drill on a drill chuck firmly and drill a large hole (diameter 11~12mm) (Fig. 5-2)

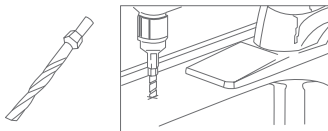
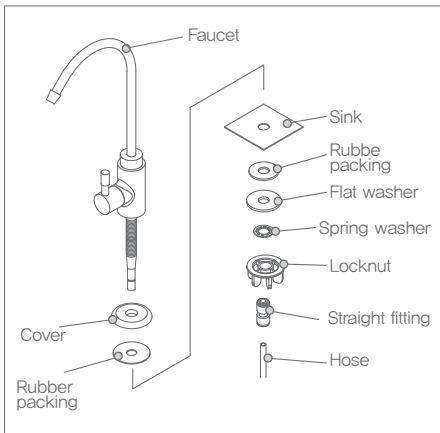


Fig. 5-2. Big hole drilling

Operate slowly by pressing the drill motor on The positioning hole lightly.  
Increase the motor RPM gradually.

3. Clean the chips around the hole.  
The preparation is done to install the faucet.



4. Place the cover and rubber packing under the body of the faucet and insert the faucet into the constructed hole.
5. Install the rubber packing and washer under the sink and secure the faucet firmly with the locknut.
6. Assemble the straight fitting at the end of the faucet and place the hose on the assembled straight fitting.

## 5.4 Installation of the head connector assay

Install in the convenient area under a sink to be apart more than 30cm (1ft) from the floor. If installed lower, it will not be possible to install the filter. (Refer to Fig. 6)

## 5.5 Filter installation



### Caution

- Install the filter according to the procedure marked in the connector of the head connector assay. If the procedure is changed, it may cause a serious problem with the purification performance.

### 5.5.1 Twist Type

1. Arrange the filter as shown in Fig.7 and insert the filter. Push it up and insert by turing 90° clockwise.

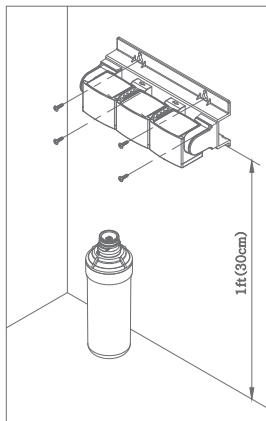


Fig. 6. Attachment of the head connector assay

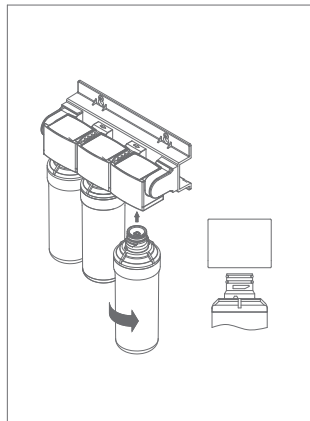


Fig.7 Installation of the Twist type filter

## 5.6 Hose connections between each parts

1. Connect the feed water supply valve and the ball valve assembled on the cold water side using a hose.
2. Connect the inlet hole of head connector and the ball valve using a hose.
3. Connect to the outlet hole of head connector and the faucet.  
\* Use Stem Elbow to prevent the hose break and twist of the head connector.



### Caution

- Make sure to refer to Figure 1. working drawing on 5p.

## 5.7 System Operation and Leakage Check



### Caution

- Before operating the system, be sure to check if the pipe is connected correctly and verify the installation once again. Check if the components are connected with each other firmly.

1. Before operating the system, check the following.  
The faucet should be unlocked. (Turn the faucet handle to CCW)

2. Open the inlet valve & ball valve slowly (Refer to the figure 8)  
The purified water will be dispensed from the faucet.  
Check if there is any leakage.

3. The purified water will be dispensed from the faucet.  
Check if there is any leakage.

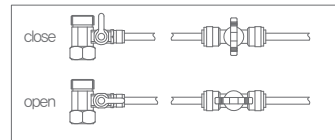


Figure 8 > Inlet Valve & Ball Valve

## 5.8 System Flushing

1. Take more than 5 mins flushing process after the installation of the water purifier.
2. If there is any strange taste from the purified water, please take step 1 again.

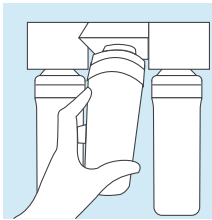
## 6.1 How to replace filters

### Removing filter

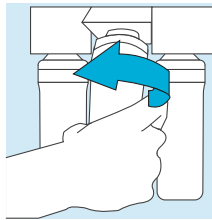
1. Close the feed water supply valve or the ball valve.
2. Turn the faucet lever to counterclockwise to remove the remaining water  
(If remained water in the machine is not removed, the 'pop' sound can be occurred during filter replacement.)
3. Lift the filter and turn it to the left for filter removing. (Figure 8-1, 8-2)  
(When disassembling filter, some water can be out from filter. It is not water leak.)

### insert of new filters

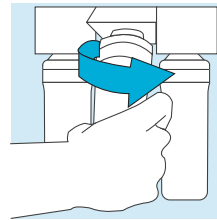
4. Insert the new filters into the connector & twist clockwise and put it back (refer to the image 8-3)



8.1 Life the filters



8.2 Twist the filters  
counterclockwise



8.3 Insert the new filters into the  
connector & twist counter  
clockwise and put the filters back

5. For the maintenance, please write down the date of exchange for the next exchange.
6. After filter exchange, please open the ball valve slowly.
7. Check if there is any leakage on the manifold, tube or water purifier.
8. Flushing is required please open the faucet and please wait around 5 mins and close the faucet.

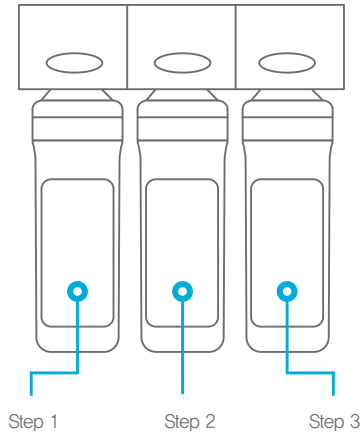
\* During this process, the micro bubble, cloudy water or black water with carbon material could be dispensed. It is for stabilizing filter performance.

## 6.2 System Maintenance



### Caution

Warning / please keep the filter exchange period for the \ optimized performance.



### ● Recommendation

#### • Effective Capacity

Minimum Filtration Capacity to remove the contaminants without filter exchange, cleaning, recycles.

#### • Filter Exchange Period

Filter Exchange Period is the estimated period for the filter's life span, this filter exchange period is based on 10 liters consumption per a day with the municipal feed water.

If the water consumption is more than 10 liters per a day, the filter exchange period would be shorter.

## Check before reporting the failure



If not followed by these instructions the product may not work properly.

In case of product malfunction, please check below chart.

Please contact us if you still have same problem.

Phenomena	Causes/Checklist	Actions
The purified water does not run.	Is the feed water supply valve locked?	Unlock the feed water supply valve.
There is not enough purified water.	Is the hose bent or twisted?	Be sure not to bend the hose. Replace the bent hose.
	Is the raw water supply valve unlocked just partly?	Unlock the raw water supply valve fully.
	Did the temperature of the raw water decreases sharply? (This is especially applicable during the winter)	If the water temperature decreases, the amount of purified water shall be reduced.
	Has the life of the filter (replacement period) run out?	If the water temperature decreases, the amount of purified water shall be reduced.
Water tastes abnormal or smells bad.	Has the life of post carbon filter run out? (Check the replacement period)	Replace the post carbon filter.
Leakage of the hose connecting area	The hose is not connected completely.	Push the hose fully to connect it completely.
	The edge of the hose is damaged.	Cut the damaged area and connect again or replace with a new hose.
Leakage from the head connector assay	Fault in the hinge O ring assembled between the connectors	Lock the raw water supply valve and contact the A/S center.

## Product Specification

**pureal**

Type	Under the sink
Inlet Water	Tap Water Only
Flow Rate	2.0LPM (0.5 GPM)
Operating Pressure	0.7~7 kgf/cm <sup>2</sup>
Capacity	4 / 12 / 12 months(Korean tap water condition)
Working Temperature	5~35℃
Material	PP, POM, ABS
Weight	3 kg
Size(mm)	(W)97.5 x (D)226 x (H)252
Filter Size	8", (D)Φ66 X (L)197 mm
Filter Stages & type	3 stage / Easy Twist Type

**pureal**

[www.purealglobal.com](http://www.purealglobal.com)