



TRUE
Blue Media

**PRINTING MACHINES
LASER PLOTTERS**



TRUE
Blue Media

**The authorized distributor
in:**

Poland, Czech, Slovakia, Lithuania, Latvia and Estonia



BIG FORMAT PRINTING MACHINES



LASER CUTTING, MARKING AND ENGRAVING MACHINES

TABLE OF CONTENTS

FIBER LASER CUTTING MACHINES

Co₂ LASER CUTTING MACHINES

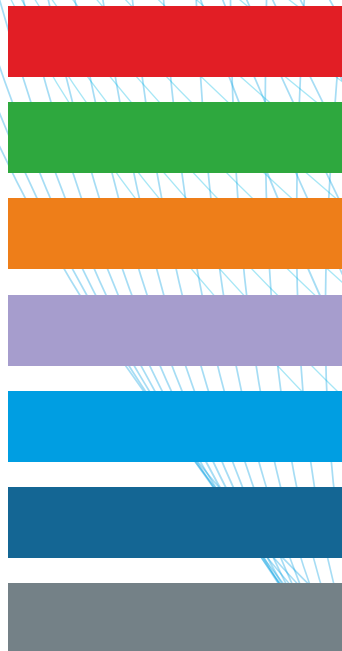
OTHER LASER MACHINES

MARKING LASER MACHINES

UV PRINTING MACHINES

SOLVENT PRINTING MACHINES

SUBLIMATION PRINTING MACHINES





Metal Pipe laser cutter

- ◆ The equipment has a fully automatic loading rack, which saves time and labor, easy to operate
- ◆ The efficiency is 5 to 6 times that of ordinary pipe cutting machines
- ◆ The blind area of tailings is small, saving materials and reducing post-processing
- ◆ The length of the remaining tailings cut by the equipment can be arbitrarily controlled, even zero, which greatly saves material loss
- ◆ Follow-up cutting (optional): standard integrated height adjuster, which can easily handle deformed pipes



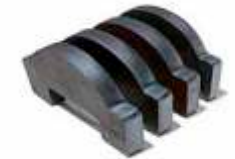
Machine model	G120CL/G170CL
Laser source	1500-3000W
Pipe diameter	10-120mm/10-170mm
Repeatability	±0.02
Pipe processing range	~6250mm

More information can be found on our website www.truebluemedia.eu



JZ-1530 Enclosed fiber laser with exchange platform

- ◆ High stability, using the world's top imported laser source, stable performance, the service life of key components can reach 100,000 hours, free laser maintenance.
- ◆ The cutting speed is fast, the efficiency is high, the operation and maintenance of the product are convenient, and the optical fiber transmission does not need to adjust the optical path
- ◆ Imported servo motor and guide rail drive mechanism are adopted, with high cutting precision.



Machine model	JZ-1325/JZ-1530
X/Y Reposition formats	±0.02mm
Laser power	3000W-20000W
Laser source	MAX/RAYCUS/IPG
Suported file formats	DXF,autoCAD,CDR

More information can be found on our website www.truebluemedia.eu



TRUE
Blue Media



JZ-PLATE and tube fiber laser

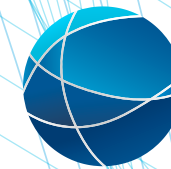
- ◆ One machine both for tube and plate cutting, which saves the cost of purchasing two sets and saves more than 50% of the space
- ◆ Full servo control is adopted to effectively ensure the cutting precision of machine. The pneumatic chuck clamps and automatically adjusts the center, and the maximum speed can be 90m/min, which effectively improves the cutting efficiency.
- ◆ The unique cross-region design of the beam makes the overall size of the machine smaller, requires less space, and saves the cost of production space to a greater extent.



Machine model	JZ-1325/JZ-1530
X/Y Reposition formats	±0.02mm
Laser power	1500W-8000W
Operating voltage	AC 380V 50Hz/60Hz
Suported file formats	DWD,DXF,JPG,PCX,AI,TIFF,PLT,CDR,BMP

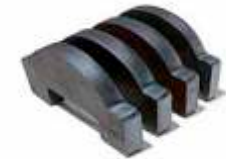
More information can be found on our website www.truebluemedia.eu

JZ-1530 High precision full servo fiber laser



TRUE
Blue Media

- ◆ Double-drive gantry gear and rack drive; imported linear guide; stable transmission and high precision.
- ◆ The X, Y, and Z axes are analyzed by finite element simulation to achieve high rigidity, high precision, high speed, and high acceleration; improve the effective efficiency of the product
- ◆ Follow-up dust removal system, the cutting areas are independent of each other, which effectively removes a large amount of dust generated during cutting, and provides a good working space for production
- ◆ Equipped with a roller feeding device, the feeding of the upper sheet becomes easy



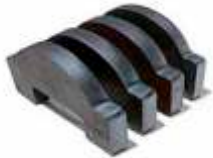
 **JZ INDUSTRY**

Machine model	JZ-1325/JZ-1530
X/Y Reposition formats	±0.02mm
Laser power	1500W-12000W
Machine working speed	0-60m/min
Suported file formats	DXF,AI,PLT,LXD,Gerber,NC

More information can be found on our website www.truebluemedia.eu



TRUE
Blue Media



Machine model	JZ-1325E/JZ-1530E
X/Y Reposition formats	±0.02mm
Laser power	1500W-12000W
Machine working speed	0-60m/min
Suported file formats	DXF,AI,PLT,LXD,Gerber,NC

More information can be found on our website www.truebluemedia.eu

JZ-1530E High precision full servo fiber laser

- ◆ Dual-drive gantry gear and rack drive, original imported linear guide, smooth transmission and high precision.
- ◆ The X, Y, and Z axes are analyzed through finite element simulation to achieve high rigidity, high precision, high speed, high acceleration to improve efficiency
- ◆ Japanese Yaskawa motor or Taiwan Delta motor, it has high precision, no step loss, high torque and low noise.
- ◆ Machine with independent display device, real-time monitoring, automatic tracking, stable operation and convenient operation,



JZ-1325MS Ball screw system laser cutting machine

- ◆ It is rack transmission, and the grinding grade rack with DING precision level is used, which has higher precision and better stability than traditional belt transmission.
- ◆ The overall structure of the bed is welded by 100mm square pipes, and the Y-axis guide rail is creatively laid directly on the structural surface of the bed. The thickness of the structure is 10mm, and it is finished by gantry finishing.
- ◆ The constant optical path with 5 reflectors is used, no matter where the laser head moves, it will always remain the same.
- ◆ Follow-up ventilation and partition ventilation, follow-up ventilation can absorb smoke and dust generated during the working process of the laser head according to the moving range of the gantry. Partition ventilation can be opened at fixed points according to the working area Or close the air duct so that the fan can absorb smoke and dust to the maximum extent.



Machine model	JZ-1325MS/JZ-1530MS/JZ-2030MS
X/Y Reposition formats	±0.05mm
Laser power	60W-500W Double or four heads for options
Machine working speed	0-500mm/s
Control system	RD Laser control system

More information can be found on our website www.truebluemedia.eu



TRUE
Blue Media



Machine model	JZ-1310
Working Area	1300*1000mm
Laser power	60W-500W Double or four heads for options
Operating voltage	AC 220V 50Hz/60Hz
Control system	RD Laser control system

More information can be found on our website www.truebluemedia.eu

JZ-1310 Servo system laser cutting machine

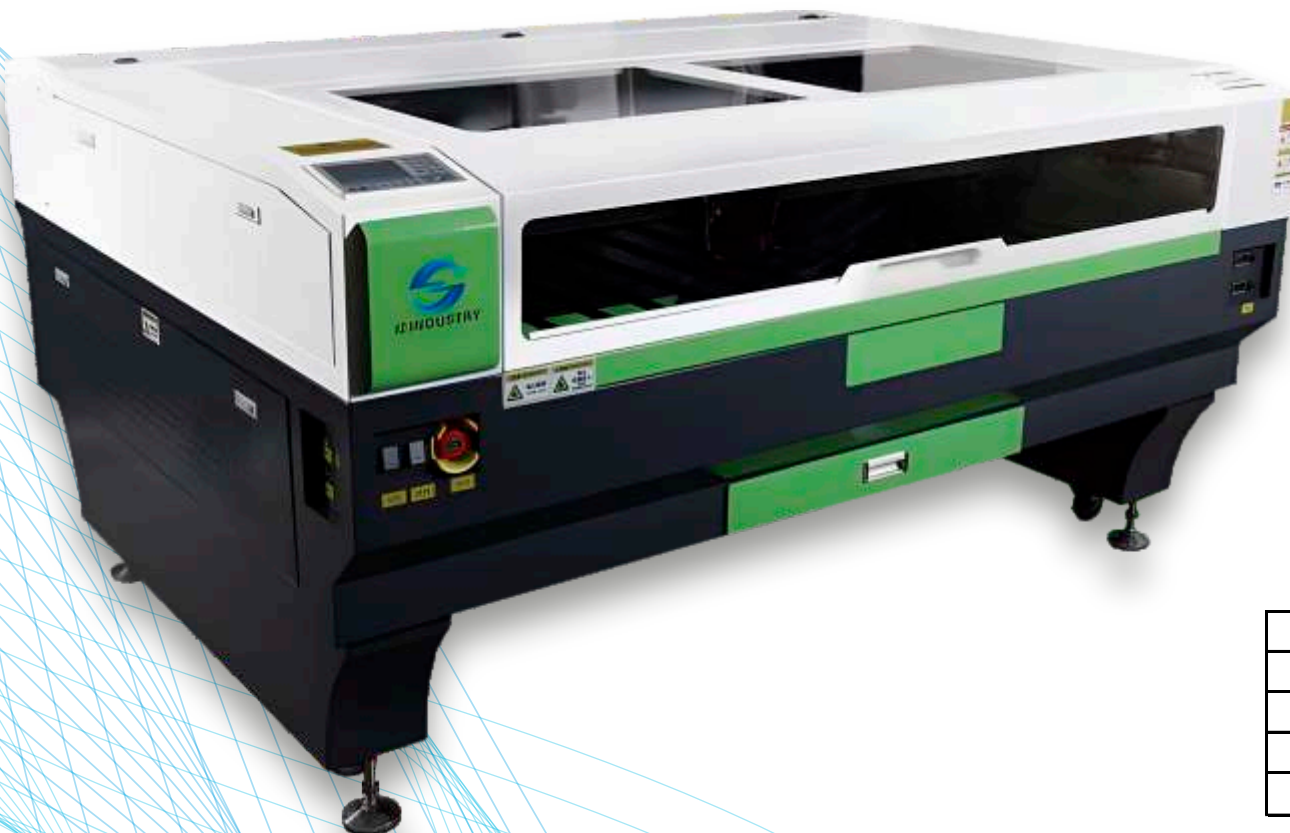
- ◆ Machine with ball screw system, higher precision, higher speed
- ◆ The laser head can be fine-tuned according to different thick materials. The aluminum alloy adjustable laser head is lighter than other metal laser heads, which can reduce the inertia error when the laser head moves, and the laser device is stable and easy to maintain low cost.
- ◆ Use Taiwan Hiwin square guide rail, made of high-strength special steel, to ensure that the laser machine will not be deformed for a long time, and improve the accuracy of the laser machine.
- ◆ Compared with the aluminum pulley, the copper pulley has higher hardness, better wear resistance and longer service life
- ◆ A variety of high-quality laser tubes are available, EFR, RECI, high efficiency and stability, and a service life of 10,000 hours.



JZ-1390 Co2 laser cutting machine



- ◆ The laser head can be fine-tuned according to different thick materials. The aluminum alloy adjustable laser head is lighter than other metal laser heads, which can reduce the inertia error when the laser head moves, and the laser device is stable and easy to maintain low cost.
- ◆ Use Taiwan Hiwin square guide rail, made of high-strength special steel, to ensure that the laser machine will not be deformed for a long time, and improve the accuracy of the laser machine.
- ◆ Compared with the aluminum pulley, the copper pulley has higher hardness, better wear resistance and longer service life.
- ◆ A variety of high-quality laser tubes are available, EFR, RECI, high efficiency and stability, and a service life of 10,000 hours.



Machine model	JZ-6090/JZ-1390/JZ-1410/JZ-1610
Working Area	600*900/1300*900/1400*1000/1600*1000
Laser power	60W-500W Double or four heads for options
Operating voltage	AC 220V 50Hz/60Hz
Control system	RD Laser control system

More information can be found on our website www.truebluemedia.eu



JZ-1410 Laser with up and down table

- ◆ Assemble the working table with a 3.0mm sheet metal which made trough bending process, the hardware assembly is not deformed, the fit is good, and it is suitable for long-term work
- ◆ The synchronous wheel is made of brass, which is more durable than the aluminum wheel
- ◆ Optical fiber cutting, one-time molding processing table (knife rack), small error and low deformation.
- ◆ The switching power supply uses Taiwan Mcanwell, with stable output and anti-interferen



Machine model	JZ-6090/JZ-1390/JZ-1410/JZ-1610
Working Area	600*900/1300*900/1400*1000/1600*1000
Laser power	60W-500W Double or four heads for options
Operating voltage	AC 220V 50Hz/60Hz
Control system	RD Laser control system

More information can be found on our website www.truebluemedia.eu

JZ-1810 Textile laser cutting machine

- ◆ The new horizontal and vertical intelligent camera control system, visual color screen operation panel, can simultancously display the graphics to be cut.
- ◆ Equipped with CCD visual positioning system, automatic positioning and cutting.
- ◆ The drive can be controlled to automatically open and feed materials more casily and conveniently, saving labor and improving efficiency.
- ◆ The built-in industrial cooling water system reduces the occupied space.



Machine model	JZ-1410/JZ-1610/JZ-1810/JZ-1812
Working Area	1800*1000-1400/1900*1600-2000
Laser power	80W-150W Double or four heads for options
Operating voltage	AC 220V 50Hz/60Hz
Control system	RD control

More information can be found on our website www.truebluemedia.eu



TRUE
Blue Media



Machine model	JZ-1313/JZ-2020
Fiber laser power	1500W-3000W
Laser power	80W-450W
Operating voltage	AC 220V 50Hz/60Hz
Control system	AU3TECH

More information can be found on our website www.truebluemedia.eu

JZ-1313 Metal & non-metal laser

- ◆ 1500W~3000W laser source for option;
- ◆ Optional Co2 laser tube 80W-400W is available;
- ◆ Equipped with well-known brand industrial systems, metal cutting heads and non-metal cutting heads, one machine with two heads, can easily switch between metal cutting or non-metal cutting with one click;
- ◆ Equipped with triangular iron blade and aluminum blade table, professional for metal and non-metal cutting;
- ◆ XYZ axis with imported screw module, imported servo system, high precision, high stability, long life, industrial tempering, gantry precision milling machine body, high stability, no deformation after long-term use.



JZ-Hand held fiber laser cleaning machine

- ◆ Intelligent protection system, mobile terminal APP and PC terminal monitoring, real-time feedback of working status.
- ◆ High threshold optical components, better cleaning effect.
- ◆ A variety of safety locks with higher safety performance.
- ◆ The water-cooled design of the whole body is stable and can support long-term work.



Machine model	JZ-1500W/JZ-2000W/JZ-3000W
Fiber laser power	1500W-3000W
Laser type	CW fiber laser source
Operating voltage	AC 220V/AC380V 50Hz/60Hz
laser wev elength	1060nm-1070nm

More information can be found on our website www.truebluemedia.eu



JZ-Hand held fiber laser welding machine

- ◆ The internal design is smart and the weld seam width is large, which solves the disadvantage of laser welding spot, and the weld seam is well formed.
- ◆ Lightweight shape, comfortable grip, easy to grasp with one hand, easy to operate
- ◆ It has a safety alarm, and automatically locks the light after removing the workpiece, with high safety.
- ◆ The welding seam is beautiful, the speed is fast, no consumables, no discoloration, and no post-polishing.
- ◆ Various angle nozzles can be configured to meet the welding needs of different products.



Machine model	JZ-1500W/JZ-2000W/JZ-3000W
Fiber laser power	1500W-3000W
Laser type	CW fiber laser source
Adjustable format	0.2-5mm
laser wev elength	1060nm-1070nm

MAX RAYCUS 20W/30W/50W/100W

- ◆ It can process all metal and some non-metal materials. It is especially advantageous for marking high hardness, high melting point, and brittle materials.
- ◆ It belongs to non-contact processing, no damage to products, no tool wear, and good marking quality.
- ◆ The laser beam is thin, the consumption of processing materials is small, and the processing heat-affected zone is small.
- ◆ High processing efficiency, computer control, easy to realize automation.



Machine model	JZ-20W/JZ-30W/JZ-50W/JZ-100W
Marking area	110x110mm/150x150mm/200x200mm/300x300mm
Marking depth	0.01-1.0mm (depending on the material)
Cooling system	Air cooling
Laser repetition rate	20KHz-80KHz

More information can be found on our website www.truebluemedia.eu



TRUE
Blue Media



JZ INDUSTRY

Machine model	JZ-30W/JZ-35W/JZ-60W
Marking area	110x110mm/150x150mm/200x200mm/300x300mm
Marking depth	<3mm according to material
Cooling system	Air cooling
Power supply	AC220V \pm 10%, 50Hz 110V (option)

More information can be found on our website www.truebluemedia.eu

Co2 Laser marking machine

- ◆ High marking precision, fast speed.
- ◆ The laser power is high, which can be applied to engraving and cutting of various non-metallic products.
- ◆ No consumables, low processing cost, and the operating life of the laser s as high as



UV Laser marking machine

- ◆ The output laser spot is smaller and the marking lines are thinner, which is more suitable for some finer graphic marks.
- ◆ The beam quality is good, the output laser is stable, and the marking effect is easy to debug.
- ◆ The laser frequency is high, and the marking speed is faster.
- ◆ The whole machine has stable performance, small size and low power consumption.



Machine model	JZ-3W/JZ-5W/JZ-10W/JZ-15W
Marking area	110x110mm/150x150mm/200x200mm/300x300mm
Marking depth	<3mm according to material
Marking speed	0-5000mm/s
continuous working time	24h

More information can be found on our website www.truebluemia.eu

The background features a light blue and white abstract design. It consists of numerous thin, curved lines that sweep across the frame from the corners towards the center, creating a sense of motion and depth. The lines are more densely packed in some areas, particularly near the corners, and more sparse in others, leaving a clean white space in the middle where the text is located.

PRINTERS

YF-X2513 Meglev UV Flatbed Printer

- ◆ Ricoh Gen6 Print Head
- ◆ Automatic height detection system.
- ◆ Anti-collision system.
- ◆ Intelligent constant temperature ink system.
- ◆ LED UV water cooling system higher performance, lower energy consumption.
- ◆ Intelligent ink level alarm system.



Print head	Ricoch Gen6 IndustrialGrayscale Print Head				
Print head number	2-9				
Print mode	4C/6C. 4C/6C+W. 4C/6C+W+V. 2*4C/6C+W, 3*4C, 4*4C				
Print width	2500mm X 1220mm				
Print speed	Print Mode	4C	2*4C	3*4C	4*4C
	4PASS	32 m ² /h	64 m ² /h	96 m ² /h	128 m ² /h
	6PASS	28 m ² /h	52 m ² /h	78 m ² /h	104 m ² /h
	8PASS	20 m ² /h	40 m ² /h	60 m ² /h	80 m ² /h
Print resolution	726*1800 Dpi				
Media Thickness	Max.100 mm ≥ 100 mm is available				
Environmental Requirement	Separated, clean, low dust, well ventilated environment temperature: 20°C - 28°C relative humidity 40% - 60%				

More information can be found on our website www.truebluemedia.eu



YF-3220G Meglev UV Flatbed Printer

- ◆ Ricoh Gen6 Print Head.
- ◆ Precision 40% higher.
- ◆ Speed is 100% faster than G5.
- ◆ Use LED cooling system.
- ◆ Longer service life and lower energy consumption.
- ◆ High precision automatic height detection system.
- ◆ Maximum speed up to 2000mm/s.
- ◆ Imported magnetic levitation motion module.



Print head	Ricoh Gen6 Industrial Grayscale Print Head				
Print head number	2-9				
Print mode	4C/6C.4C/6C+W.4C/6C+W+V, 2*4C/6C+W, 3*4C, 4*4C, 5*4C, 6x4C				
Print width	3200mm X 2000mm				
Print speed	Print Mode	4C+W+V	2C*4C+W+V	3*4C	6*4C
	4PASS	24 m ² /h	72 m ² /h	108 m ² /h	174 m ² /h
	6PASS	20 m ² /h	60 m ² /h	90 m ² /h	142 m ² /h
	8PASS	16 m ² /h	48 m ² /h	72 m ² /h	110 m ² /h
Print resolution	720*1800 Dpi				
Media Thickness	Max.100 mm ≥ 100 mm is available				
Environmental Requirement	Separated, clean, low dust, well ventilated environment temperature: 20°C - 28°C relative humidity 40% - 60%				

More information can be found on our website www.truebluemedia.eu

YF-1610 UV Flatbed Printer

- ◆ Using Ricoh Gen 6 and Ricoh Gen 5 industrial printhead, high precision and stable output.
- ◆ High-precision automatic height detection system and high-sensitive anti-collision system.
- ◆ White&Color&Varnish syn output.
- ◆ Use Photoprint RIP software to process multiple orders and maintain color uniformity.
- ◆ The highest printing height is 15CM, widely used in personalized customization and crafts.



Print head		Ricoh Gen6	Ricoh Gen5l	Ricoh Gen5 Print
Print head number		2-9	2-6	2-6
Print mode		4C/6C/4C+W/6C+W/4C+W+V/6C+W+V		
Print width		1600mm X 1000mm		
Print speed	Print Mode	4C+W+V	2C*4C+W+V	3*4C
	4PASS	20 m ² /h	7 m ² /h	16 m ² /h
	6PASS	16 m ² /h	5 m ² /h	14 m ² /h
	8PASS	12 m ² /h	3 m ² /h	10 m ² /h
Print resolution		720*1800 Dpi		
Media Thickness		Max.100 mm ≥ 150 mm is available		
Environmental Requirement		Separated, clean, low dust, well ventilated environment temperature: 20°C-28°C relative humidity 40% - 60%		

More information can be found on our website www.truebluemedia.eu

YF-1610 CCD Visual Position Printer

- ◆ CCD Accurate scanning, automatic recognition and positioning, with an error less than an 0.2mm
- ◆ Intelligent constant temperature ink system.
- ◆ Automatic height detection system.
- ◆ Intelligent ink level alarm system.
- ◆ Anti-collision system.

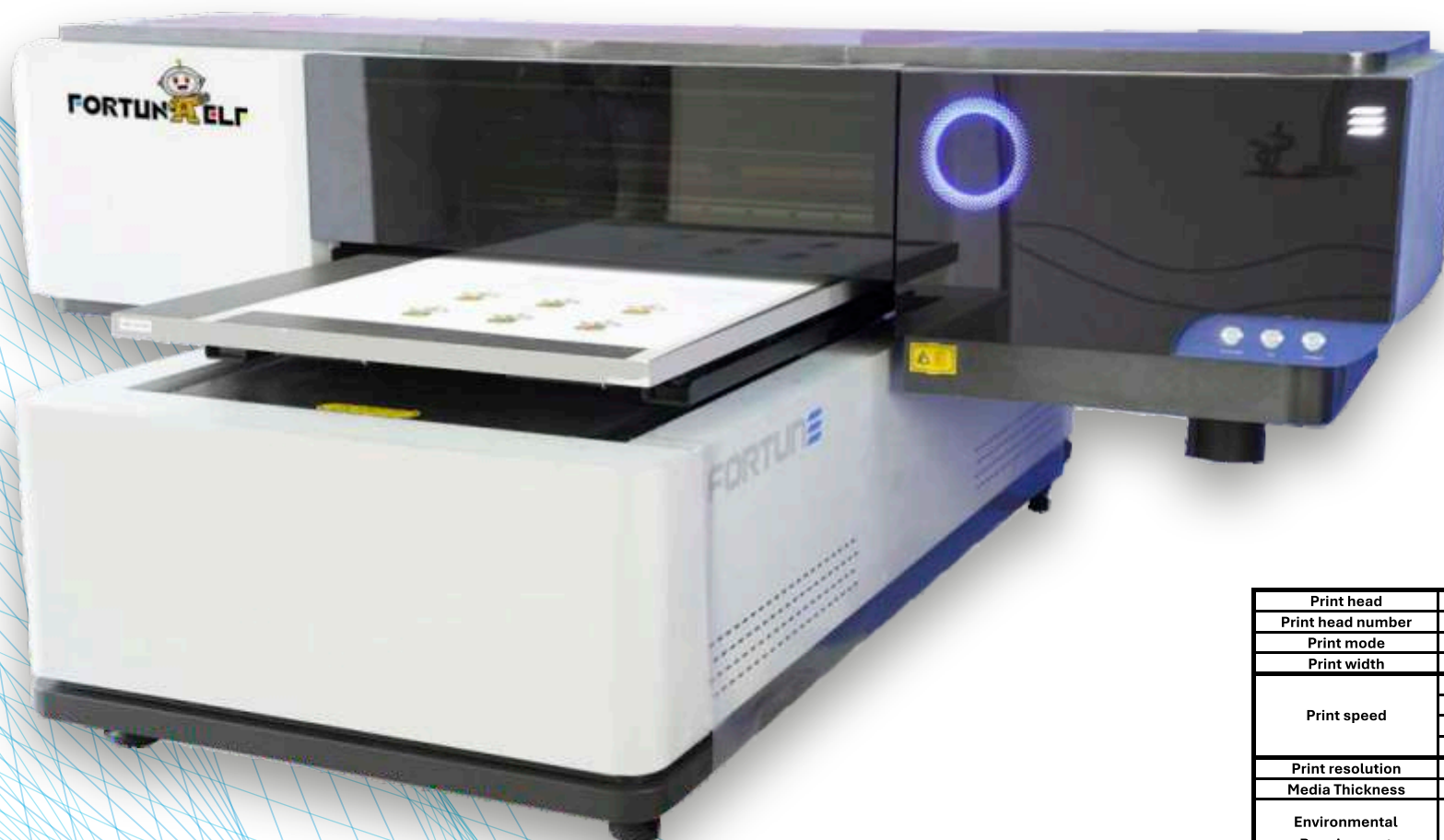


Print head	Ricoh Gen6	
Print head number	2-9	
Print mode	CMYK, LC, LM, WV, OP	
Print width	1600mm X 1000mm	
Print speed	Print Mode	CMYK, LC, LM, WV, OP
	4PASS	18 m ² /h
	6PASS	15 m ² /h
	8PASS	13 m ² /h
Print resolution	720*1800 Dpi	
Media Thickness	Max.100 mm ≥ 150 mm is available	
Environmental Requirement	Separated, clean, low dust, well ventilated environment temperature: 20°C - 28°C relative humidity 40% - 60%	

More information can be found on our website www.truebluemedia.eu

YF-6090 UV Flatbed Printer

- ◆ Compatible printing for flat and cylindrical bottle with a diameter 30 -120 mm
- ◆ Color white varnish synchronous output
- ◆ Advanced gloss oil/matte oil/frosting/gold stamping technique



Print head		Epson 13200	Epson 11600
Print head number		3	
Print mode		CMYK, WV	
Print width		600mm x 900mm	
Print speed	Print Mode	CMYK, WV	
	4PASS	9 m ² /h	5 m ² /h
	6PASS	7 m ² /h	4 m ² /h
	8PASS	5 m ² /h	3 m ² /h
Print resolution		720*1800 Dpi	
Media Thickness		Max.100 mm ≥ 150 mm is available	
Environmental Requirement		Separated, clean, low dust, well ventilated environment temperature: 20°C - 28°C relative humidity 40% - 60%	

More information can be found on our website www.truebluemia.eu

YF-3200Z UV Roll To Roll Printer

- ◆ Avarietyof printhead configuration, Ricoh, Konica.
- ◆ Installed with four large diameter rubber rollers to ensure that material is not easy to wrinkle and run off.
- ◆ Imported dual linear mute guides make less noises during printing.
- ◆ Industrial-grade heavy-duty structure design, more simple and stable.
- ◆ 5/8 support points are used to balance the rubber roller to ensure stability.



Print head		Ricoh Gen6	Ricoh Gen5
Print head number	2-9		2-9
Print mode	4C/6C, 4C/6C+W, 2*4C/6C, 3*4C/6C, 474C		
Print width	3200 mm		
Print speed	Print Mode	CMYK, WV	
	4PASS	9 m ² /h	5 m ² /h
	6PASS	7 m ² /h	4 m ² /h
	8PASS	5 m ² /h	3 m ² /h
Print resolution	720*1800 Dpi		
Media Thickness	Max 5mm		
Environmental Requirement	Separated, clean, low dust, well ventilated environment temperature: 20°C - 28°C relative humidity 40% - 60%		



YF-3200MH UV Hybrid Printer



- ◆ Automatic height detection system.
- ◆ Highly sensitive carriage protection device.
- ◆ Various print mode.
- ◆ Roll and flatbed platform.
- ◆ Industrial grade heavy duty structure.
- ◆ Material positioning and feeding auxiliary system.

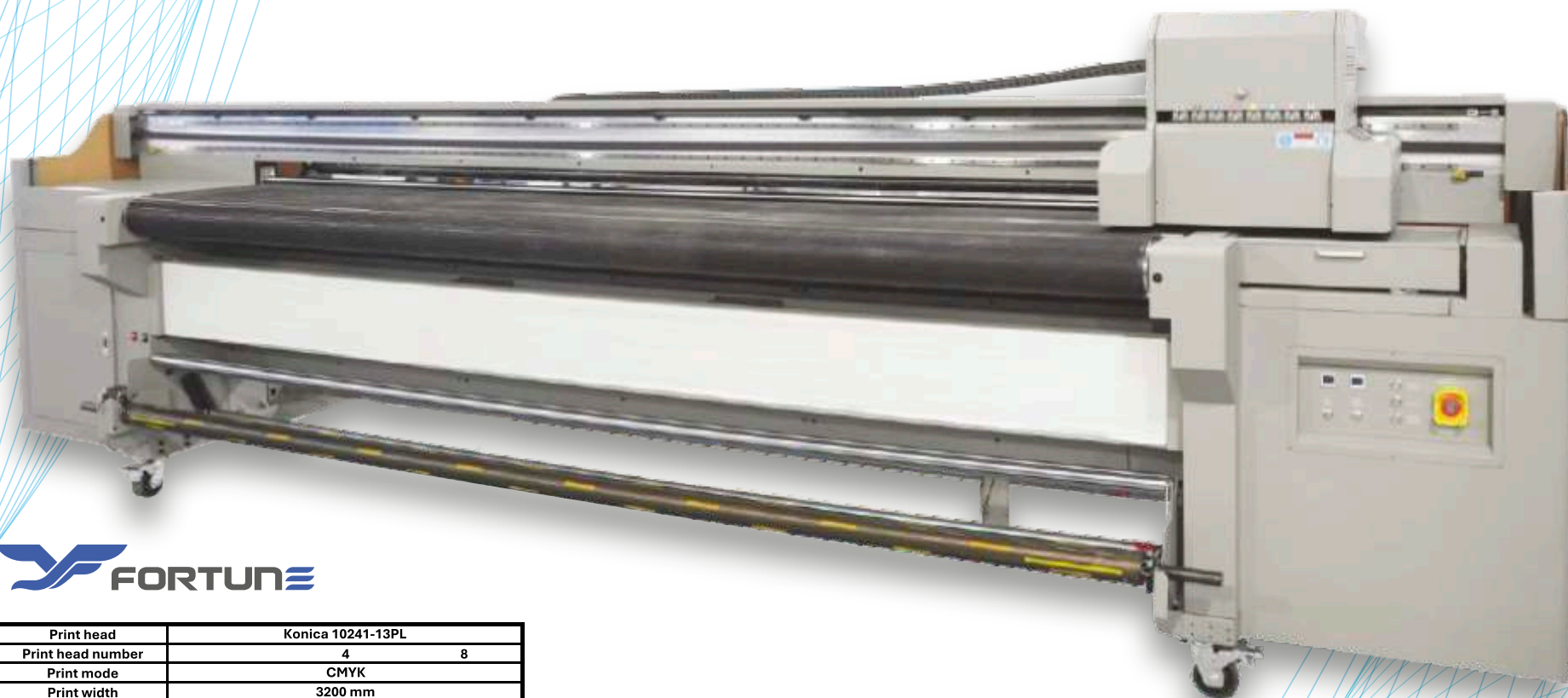


Print head	Ricoh Gen6 Print Head		Konica1024i		
Print head number	2-8		4-16		
Print mode	4C/6C+W+4CI6C, 2*4C, 3*4C/6C 4*4C/ 6C		4C	2*4C	3*4C
Print width	3200 mm		3200 mm		
Print speed	Print Mode				
	4PASS	34 m ² /h	96 m ² /h	25 m ² /h	50 m ² /h
	6PASS	26 m ² /h	78 m ² /h	19 m ² /h	38 m ² /h
	8PASS	20 m ² /h	60 m ² /h	15 m ² /h	30 m ² /h
Print resolution	726*1800 Dpi				
Media Thickness	MAX ≤ 50mm				
Environmental Requirement	Separated, clean, low dust, well ventilated environment temperature: 20°C - 28°C relative humidity 40% - 60%				

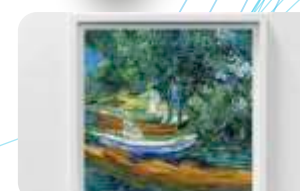
More information can be found on our website www.truebluemedia.eu

YF-3200ML UV Hybrid Printer

- ◆ Industrial grade heavy duty structure.
- ◆ Anti-collision system.
- ◆ Automatic heightdetection system.
- ◆ Mechanical correction function, material positioning and feeding auxiliary system.



Print head	Konica 10241-13PL		
Print head number	4		8
Print mode	CMYK		
Print width	3200 mm		
Print speed	Print Mode	CMYK	
	4PASS	25 m ² /h	50 m ² /h
	6PASS	20 m ² /h	38 m ² /h
	8PASS	15 m ² /h	30 m ² /h
Print resolution	720*1800 Dpi		
Media Thickness	Max.100 mm ≥ 150 mm is available		
Environmental Requirement	Separated, clean, low dust, well ventilated environment temperature: 20°C - 28°C relative humidity 40% - 60%		



YF-1800ML UV Hybrid Printer

- ◆ Automatic height detection system.
- ◆ Highly sensitive carriage protection device.
- ◆ Various print mode.
- ◆ Roll and flatbed platform.
- ◆ Economic machine structure.



Print head	Ricoh Gen6/Gen5/Epson13200			
Print head number	2-8			
Print mode	4C, 4C+W, 4C+W+V			
Print width	1600mm X 1000mm			
Print speed	Print Mode	4C+W+Y	2*4C	4C+W+4C
	4PASS	15 m ² /h	30 m ² /h	15 m ² /h
	6PASS	13 m ² /h	26 m ² /h	13 m ² /h
	8PASS	10 m ² /h	20 m ² /h	11 m ² /h
Print resolution	720*1800 Dpi			
Media Thickness	Max ≤ 20 mm			
Environmental Requirement	Separated, clean, low dust, well ventilated environment temperature: 20°C - 28°C relative humidity 40% - 60%			

More information can be found on our website www.truebluemedia.eu

YF-3200G UV Roll To Roll Printer

- ◆ A variety of print head configuration RicohGen5/Gen6.
- ◆ High sensitive Anti-collision system.
- ◆ Imported chain and high-flex cable, top level drag chain solution.
- ◆ Industrial grade heavy duty structure.
- ◆ Intelligent ink level alarm system.

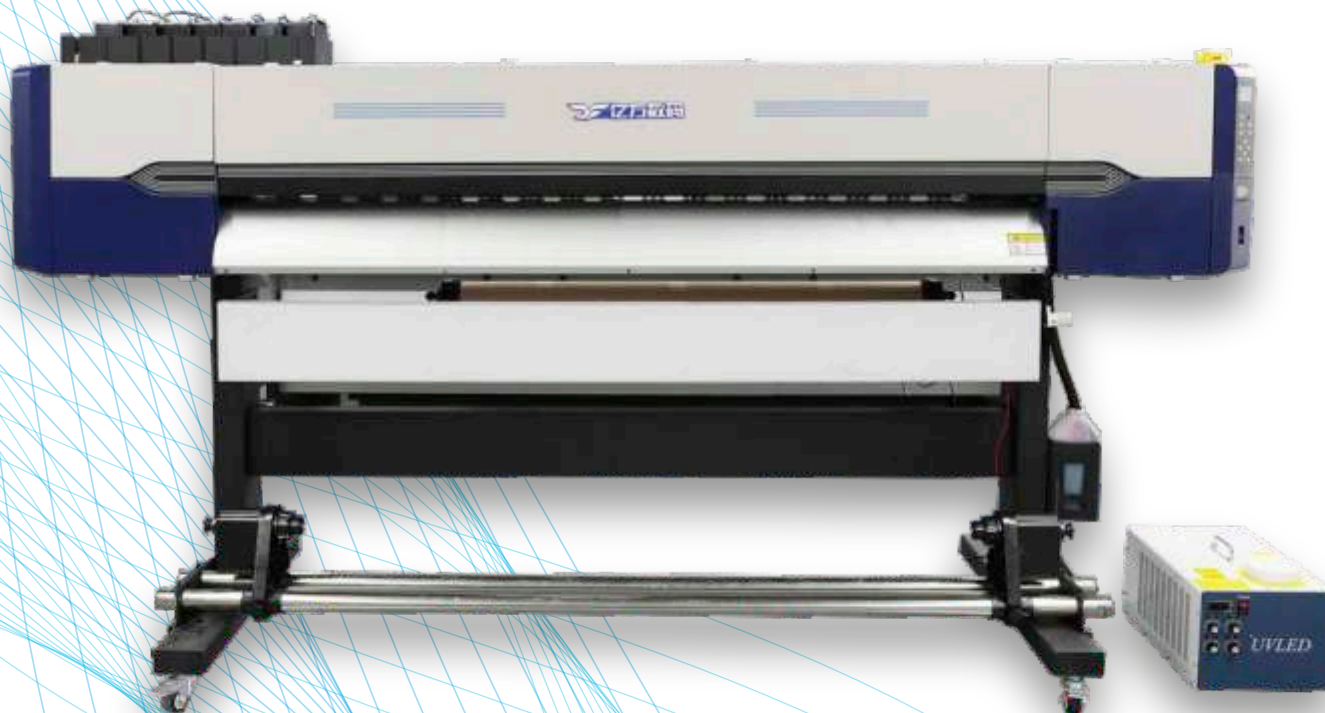


Print head	Ricoh Gen6/Gen5		
Print head number	2 - 12		
Print mode	4C, 4C+W+V		
Print width	3200 mm		
Print speed	Print Mode	4C, 4C+W+V	
	4PASS	22 m ² /h	44 m ² /h
	6PASS	18 m ² /h	36 m ² /h
	8PASS	14 m ² /h	28 m ² /h
Print resolution	720*1800 Dpi		
Media Thickness	≤ 3mm Max 5mm		
Environmental Requirement	Separated, clean, low dust, well ventilated environment temperature: 20°C - 28°C relative humidity 40% - 60%		

More information can be found on our website www.truebluemedia.eu

YF-1704/2004 UV Printer

- ◆ Adopt Epson print head
- ◆ Adjustable carriage height (< 8mm), convenient for customers to print various materials.
- ◆ Automatic lifting and cleaning station, large capacity buinkl sykste m (automatic cleaning sealed print head, make the head always in good condition).
- ◆ Wide anti-statpiincch roller, supeffronwt iheatdinge arc.
- ◆ Constanttension high-precision feeding system to ensure accurateand stable feeding.
- ◆ Scientific operation interface, convenient to operate.
- ◆ LED curing system, more energy-saving, longer life, the printed materials are not affected by temperature.
- ◆ Aluminum alloy integrated cleaning station.
- ◆ White ink mixing system.
- ◆ Imported mute rail, aluminum beam, guarantee high stability and high quality output.



	YF-1704UV	YF-2004UV
Print head	Epson 13200	Epson 13200
Print head number	4	4
Print mode	4C+W+4C+V	4C+W+4C+V
Print width	1600 mm	1900 mm
Print speed	Print Mode	4C+W+4C+V
	4PASS	22 m ² /h
	6PASS	18 m ² /h
	8PASS	14 m ² /h
Print resolution	720*1800 Dpi	
Media Thickness	Max ≤ 3mm	
Environmental Requirement	Separated, clean, low dust, well ventilated environment temperature: 20°C - 28°C relative humidity 40% - 60%	

More information can be found on our website www.truebluemedia.eu



	YF - X1701	YF - X1701 8C	YF - X1701 4C
Print head	Epson13200		
Print head number	1	2	
Print mode	CMYK CMYK,LC,LM,LK,LLK 2CMYK		
Print width	1600mm		
Print speed	Print Mode	CMYK	CMYK,LC,LM,LK,LLK 2CMYK
	4PASS	17 m ² /h	15 m ² /h 35 m ² /h
	6PASS	14 m ² /h	13 m ² /h 28 m ² /h
	8PASS	11 m ² /h	10 m ² /h 22 m ² /h
Print resolution	720*1800 Dpi		
Media Thickness	Max ≤ 3mm		
Environmental Requirement	Separated, clean, low dust, well ventilated environment temperature: 20°C 28°C relative humidity 40% - 60%		

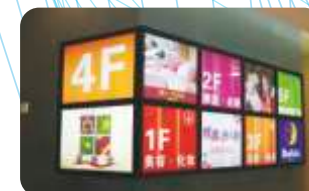
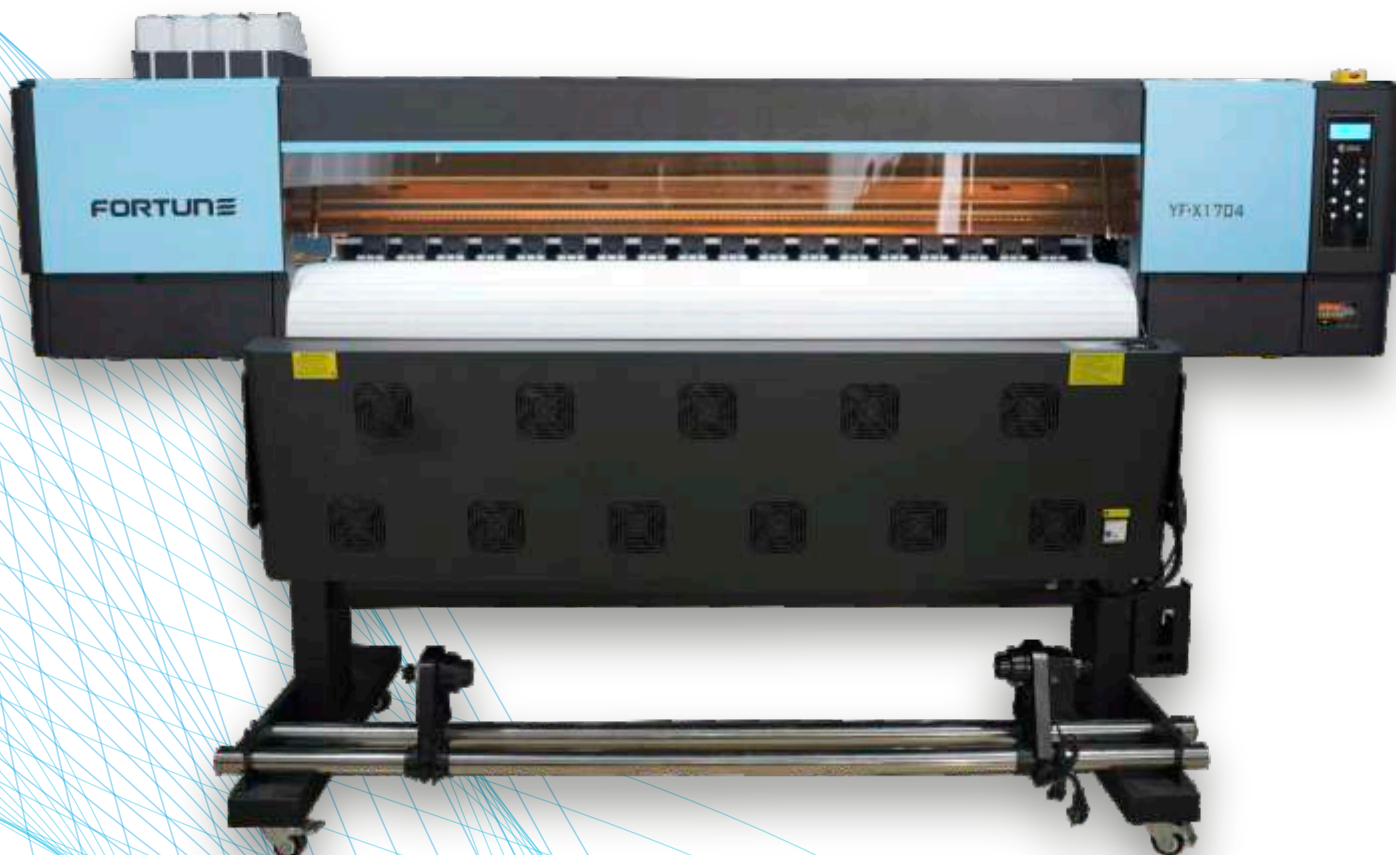
YF-X1701/02 Eco Solven Printer

- ◆ Epson13200 Printhead.
- ◆ Anti-collision system.
- ◆ Adjustable head height (≤20mm).
- ◆ Imported mute rail and servo integrated motor.
- ◆ Big capacity bulk ink system.
- ◆ High-power integrated drying fan.
- ◆ Scientific operation interface, easy to operate.
- ◆ New variable ink drop technology and three feathering print functions make the print picture more realistic and delicate.



YF-X1704 4/8 Color Printer

- ◆ Epson13200 Printhead.
- ◆ Anti-collision system.
- ◆ Adjustable head height ($\leq 20\text{mm}$)
- ◆ Imported mute rail and servo integrated motor.
- ◆ Big capacity bulk ink system.
- ◆ High-power integrated drying fan.
- ◆ Scientific operation interface, easy to operate.
- ◆ New variable ink drop technology and three feathering print functions make the print picture more realistanacd delicate.



		YF-1704 8C	YF-2004 4C
Print head		Epson 13200	Epson 13200
Print head number		4	4
Print mode		4H*8C	4H*4C
Print width		1600 mm	
Print speed	Print Mode	4H*8C	4H*4C
	2PASS	/	106 m ² /h
	3PASS	/	80 m ² /h
	4PASS	30 m ² /h	53 m ² /h
	6PASS	25 m ² /h	33 m ² /h
Print resolution		720*1800 Dpi	
Media Thickness		Max ≤ 3mm	
Environmental Requirement		Separated, clean, low dust, well ventilated environment temperature: 20°C - 28°C relative humidity 40% - 60%	

More information can be found on our website www.truebluemedia.eu



		YF-N1704B	YF-N2004B
Print head		Epson 13200	Epson 13200
Print head number		4	
Print mode		4H*8C	4H*4C
Print width		1600 mm	1900 mm
Print speed	Print Mode	4H*4C	
	2PASS	106 m ² /h	110 m ² /h
	3PASS	80 m ² /h	85 m ² /h
	4PASS	53 m ² /h	53 m ² /h
	6PASS	33 m ² /h	35 m ² /h
Print resolution		720*1800 Dpi	
Media Thickness		Max ≤ 3mm	
Environmental Requirement		Separated, clean, low dust, well ventilated environment temperature: 20°C - 28°C relative humidity 40% - 60%	

YF-N1704B YF-2004B Eco Solvent Printer

- ◆ Epson13200 Printhead.
- ◆ Anti-collision system.
- ◆ Adjustable head height (≤20mm).
- ◆ Imported mute rail and servo integrated motor.
- ◆ Big capacity bulk ink system.
- ◆ High-power integrated drying fan.
- ◆ Scientific operation interface, easy to operate.
- ◆ New variable ink drop technology and three feathering print functions make the print picture more realistic and delicate.

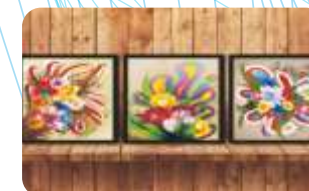


More information can be found on our website www.truebluemedia.eu

YF - 3202/04 Eco Solvent/UV Printer



- ◆ Epson13200 Printhead.
- ◆ Anti-collision system.
- ◆ Adjustable head height (≤20mm).
- ◆ Print Resolution Imported mute rail and servo integrated motor.
- ◆ Big capacity bulk ink system.
- ◆ High-power integrated drying fan.
- ◆ Scientific operation interface, easy to operate.
- ◆ New variable ink drop technology and three feathering print functions make the print picture more realistic and delicate



		YF-3202/04 Eco Solvent		YF-3202/04 UV Printer	
Print head	Epson 13200				
Print head number		2	4	2	4
Print mode		2H*4C	4H*4C	2H*4C	4H*4C
Print width		3100 mm			
Print speed	Print Mode	2H*4C	4H*4C	2H*4C	4H*4C
	3PASS	42 m ² /h	88 m ² /h	25 m ² /h	50 m ² /h
	4PASS	28 m ² /h	58 m ² /h	20 m ² /h	42 m ² /h
	6PASS	18 m ² /h	40 m ² /h	15 m ² /h	30 m ² /h
Print resolution		720*1800 Dpi			
Media Thickness		Max.100 mm ≥ 100 mm is available			
Environmental Requirement		Separated, clean, low dust, well ventilated environment temperature: 20°C - 28°C relative humidity 40% - 60%			

More information can be found on our website www.truebluemedia.eu



Print head	Starfire 1024	
Print mode	4C	
Print width	3200 mm	
Print speed	Print Mode	4C
	2PASS	248 m ² /h
	3PASS	178 m ² /h
	4PASS	138 m ² /h
Environmental Requirement	Separated, clean, low dust, well ventilated environment temperature: 20°C - 28°C relative humidity 40% - 60%	

More information can be found on our website www.truebluemedia.eu

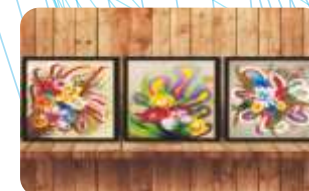
YF-3202/04/06SG Solvent Printer

- ◆ Industrial grade all steel print head, 110V high frequency injection, which is installed internal ink circulation, internal metal instruction. It can be disassembled for cleaning and component replacement, with 8 years lifetime extremely low maintenance costs. Leading color saturation & precision.
- ◆ Adopted double linear guide, all-aluminum fine-milling beam, high-precision frame, platform and patented carriage manufacturing, realizing the true trinity precision, ensuring the precision of machine printing.
- ◆ Independent color separation print head heating system, industrial grade negative pressure system, coupled with automatic ink circulation technology of the print head to ensure ink fluency, effectively prevent the ink breakage caused by, inking temperature different, which greatly saves the cost of the customer's use and has truly achieved uninterrupted printing.
- ◆ Heavy-duty structure design, more simple and stable.



YF 1704/2004 Sublimation Printer

- ◆ Adopt Epson print head
- ◆ Adjustable carriage height (<8mm), convenient for customers to print various materials.
- ◆ Automatic lifting and cleaning station, large capacity bulk ink system, (automatic Cleaning sealed print head, make the head always in good condition).
- ◆ Wide anti-static pinch roller, super wide front heating arc.
- ◆ Constanttension high-precision feeding system to ensure accurateand stable feeding.
- ◆ Scientific operation interface, convenient to operate.
- ◆ Led curing system, more energy-saving, longer life, The printed materials are not affected by temperature.
- ◆ Aluminum alloy integrated cleaning station.
- ◆ White ink mixing system.
- ◆ Imported mute rail, aluminum beam, guarantee high stability and high quality output.



Print head	Epson I3200-A1		
Print head number	2		
Print mode	CMYK+CMYK+CMYK+CMYK		
Print width	3100 mm		
Print speed	Print Mode	CMYK+CMYK+CMYK+CMYK	
	2PASS	106 m ² /h	110 m ² /h
	3PASS	80 m ² /h	85 m ² /h
	4PASS	53 m ² /h	55 m ² /h
	6PASS	33 m ² /h	40 m ² /h
Print resolution	720*1800 Dpi		
Media Thickness	Max ≤ 3mm		
Environmental Requirement	Separated, clean, low dust, well ventilated environment temperature: 20°C - 28°C relative humidity 40% - 60%		

More information can be found on our website www.truebluemedia.eu



YF-3202/3204 sublimation Printer

- ◆ EpsonI3200 Printhead.
- ◆ Anti-collision system.
- ◆ Adjustable head height (≤20mm).
- ◆ Imported mute rail and servo integrated motor.
- ◆ Big capacity bulk ink system.
- ◆ High-power integrated drying fan.
- ◆ Scientific operation interface, easy to operate.

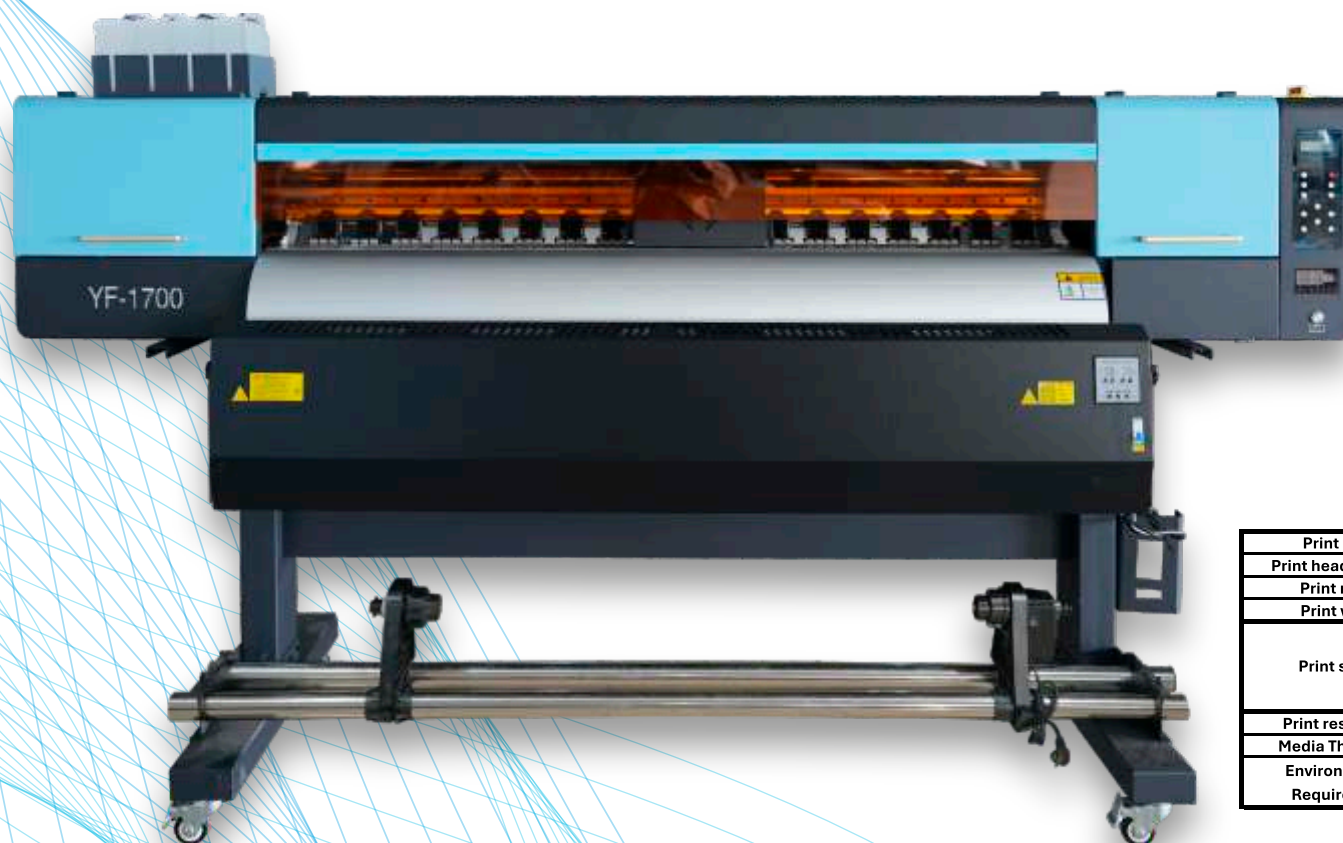
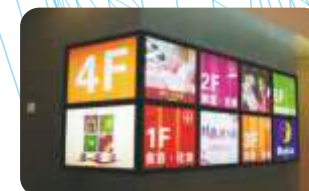


Print head		Epson I3200-A1	
Print head number		2	4
Print mode		CMYK+CMYK+CMYK+CMYK	
Print width		3100 mm	
Print speed	Print Mode	2H*4 C	4H*4 C
	3PASS	42 m ² /h	88 m ² /h
	4PASS	28 m ² /h	58 m ² /h
	6PASS	18 m ² /h	40 m ² /h
Print resolution		720*1800 Dpi	
Media Thickness		Max ≤ 3mm	
Environmental Requirement	Separated, clean, low dust, well ventilated environment temperature: 20°C - 28°C relative humidity 40% - 60%		

More information can be found on our website www.truebluemedia.eu

YF-X1701/17021 Sublimation Printer

- ◆ EpsonI3200 Printhead.
- ◆ Anti-collision system.
- ◆ Adjustable head height (≤20mm).
- ◆ Imported mute rail and servo integrated motor.
- ◆ Big capacity bulk ink system.
- ◆ High-power integrated drying fan.
- ◆ Scientific operation interface, easy to operate.
- ◆ New variable ink drop technology and three feathering print functions make the print picture more realistic and delicate



	YF - X1701	YF - X1701 8C	YF - X1701 4C
Print head	Epson I3200-A1		
Print head number	1		2
Print mode	CMYK CMYK,LC,LM,LK,LLK 2CMYK		
Print width	1600mm		
Print speed	Print Mode	CMYK	MYK,LC,LM,LK,LL 2CMYK
	4PASS	17 m ² /h	15 m ² /h 35 m ² /h
	6PASS	14 m ² /h	13 m ² /h 28 m ² /h
	8PASS	11 m ² /h	10 m ² /h 22 m ² /h
Print resolution	720*1800 Dpi		
Media Thickness	Max ≤ 3mm		
Environmental Requirement	Separated, clean, low dust, well ventilated environment temperature: 20°C - 28°C relative humidity 40% - 60%		

More information can be found on our website www.truebluemedia.eu

YF-2008

- ◆ EPSON 13200 Print head Big capacity bulk ink system.
- ◆ Anti-collision system Heavy-duty winding device.
- ◆ Imported mute rail and servo integrated motor.
- ◆ Bright colors, real and delicate printing pictures.






Print head	I3200	
Print head number	8	
Print mode	CMYK	
Print width	1900 mm	
Print speed	Print Mode	4C
	1PASS	218 m ² /h
	2PASS	107 m ² /h
	3PASS	85 m ² /h
Media Thickness	Max ≤ 3mm	
Environmental Requirement	Separated, clean, low dust, well ventilated environment temperature: 20°C - 28°C relative humidity 40% - 60%	

More information can be found on our website www.truebluemedia.eu

Consumables



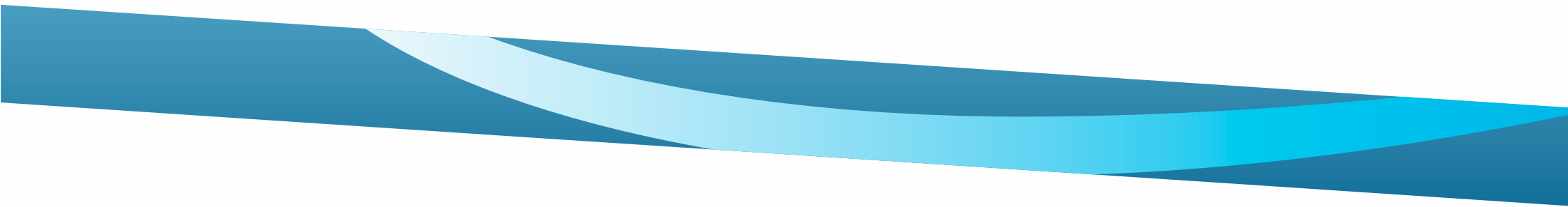
PRINTHEAD	EPSON I3200/DX5/DX7/XP600/TX800; RICOH G5/G6/GH2220/KONICA 512I/1024I/1024A /STARFIRE 1024/SEIKO 1024GS/KYOCERA KJ4A.
COLORS	<div> <div>CYAN</div> <div>MAGENTA</div> <div>YELLOW</div> <div>BLACK</div> <div>L.CYAN</div> <div>L.MAGENTA</div> <div>WHITE</div> </div>
SUITABLE PRINTER	Crystal uv dtf printer
SUITABLE MATERIALS	Glass, Mental, Wood, Ceramic, Carton, Phone case etc.
APPLICATION	Advertising materials, Customized products, Home decoration etc. <div>    </div>
PACKAGE	500ML/1000ML/5L/20L Pack. (Customized package is available.)
WORK ENVIRONMENT	TEMP.: 15-28℃ HUMIDITY: 35%-60%
SHELF LIFE	12 MONTHS





OUR OFFER ALSO INCLUDES:

**DYE INK
WIDE FORMAT WATER BASED INK
ECO SOLVENT INK
DTG INK
SUBLIMATION INK
UV CURABLE INK
UV DTF INK
UV INK**



TRUE
Blue Media



Office and Showroom
ul. Polna 7
05-152 Czosnów
Poland
www.truebluemedi.eu
mob: +48 888 886 858