

Check Valves

RPC 04

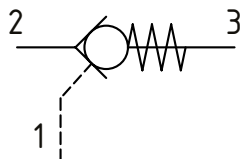
Pilot Operated Check Valve, Port 1 Pilot to Open

350 bar [5000 psi] • 21 l/min [5.5 US gpm]

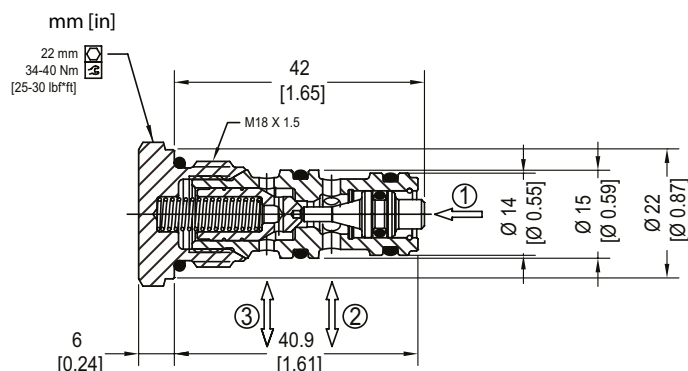
DESCRIPTION AND OPERATION

This is a pilot operated check valve where free flow takes place from port 2 to 3 and is blocked from port 3 to 2 until pilot pressure is applied to port 1.

SCHEMATIC



DIMENSIONS



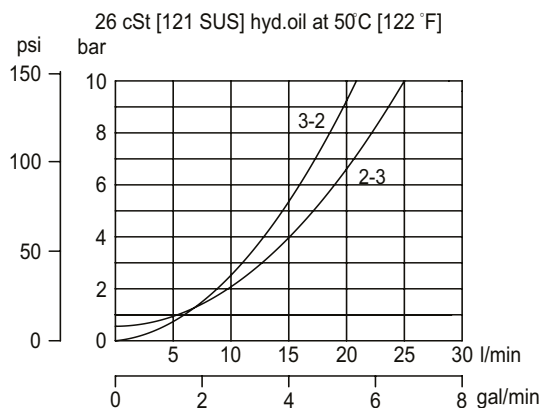
PERFORMANCE DATA

| | |
|--------------------------------------|------------------------------|
| Rated pressure* | 350 bar [5000 psi] |
| Rated flow at 7 bar [100 psi] | 21 l/min [5.5 US gpm] |
| Weight | 0.06 kg [0.13 lb] |
| Pilot Ratio | 3.2:1 |
| Cavity | NCS04/3 |

*Rated Pressure based on NFPA fatigue test standard [at 1 million cycles]
Note: A piston seal requires a 5 bar [72.5 psi] or greater return spring.

PERFORMANCE CURVES

Pressure drop



MODEL CODE

RPC04 - 2.5 - OR - 00 - V

Crack Pressure

| Code | Bar | Psi |
|------|-----|-------|
| 0.5 | 0.5 | [7.3] |
| 2.5 | 2.5 | [36] |
| 5 | 5 | [73] |
| 8 | 8 | [116] |
| 15 | 15 | [218] |

Pilot Seal Option

| | |
|-------------|-----------|
| Omit | -No seals |
| OR | -Seals |

Seal Option

| Code | Seal kit |
|---------------------|-----------|
| Omit -Buna-N | 230000160 |
| V -Viton | 230000450 |

Housing

| Code | Ports & Material | Housing Model Code |
|--------------|------------------|--------------------|
| 00 | No Housing | No Housing |
| SE1/4 | AL, 1/4 BSP | NCS04/3-SE-1/4 |
| SE4S | AL, #4 SAE | NCS04/3-SE-4S |
| SE6S | AL, #6 SAE | NCS04/3-SE-6S |

*Aluminum bodies are to be used for pressures less than 210 bar [3000 psi].

* Additional housings available