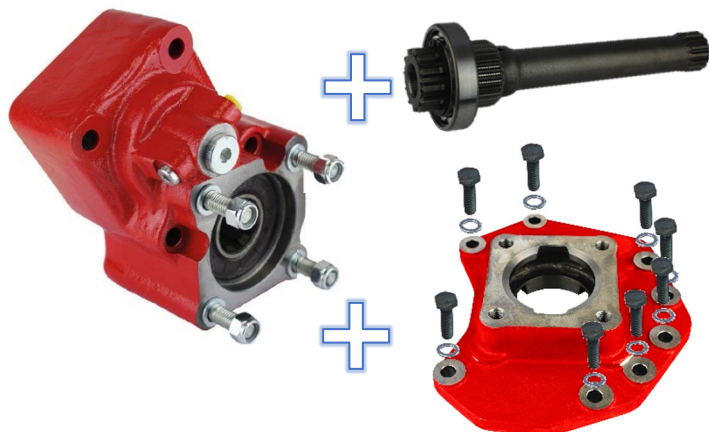


Toma de Fuerza completa = Kit PTO Base + Kit brida + Kit eje
 Complete PTO = Base PTO Kit + Flange Kit + Adapter shaft kit

Mercedes

G131, G210, G211, G141-9, G221, G230, G231, G240, G241,
 G260, G280, G281, G330

Posterior Neumático Reforzado, girado
 Rear Pneumatic Heavy Duty, Rotated



Descripción Description

Kit toma de fuerza base reforzada, con salida girada para bombas ISO 4 taladros. Diferentes relaciones internas. Accionamiento neumático. Montaje sobre registro posterior de la caja de cambios. Indicador de funcionamiento opcional. Kits de brida y eje se piden por separado.

Heavy Duty Base PTO, rotated output to connect ISO 4 bolts pumps. Different internal ratios. Pneumatic shifting. Mounting on rear window of the Gearbox. Optional: Passing contact switch. Flange and Shaft Kits must be ordered separately.

Datos Principales Main Data

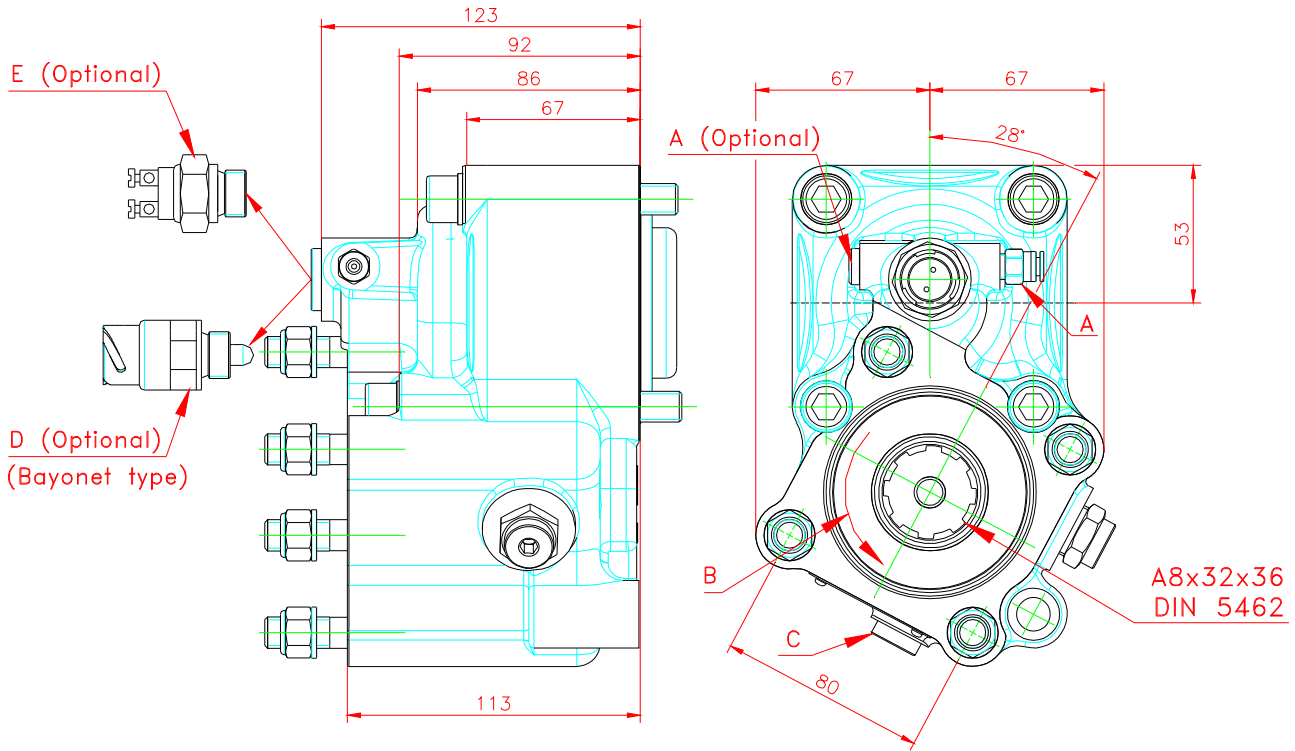
Relación Interna Internal Ratio		1: 1.3	1: 1.5	1: 1.8	
Par máximo	Continuo Continuous	450	400	350	
Max. Torque (Nm)	Intermitente Intermittent	630	560	490	
Potencia (1500 r.p.m.) Power		97 C.V // 72 kW	87 C.V // 65 kW	75 C.V // 56 kW	
Lado de montaje Mounting position		Posterior Rear			
Sentido de giro de la bomba Pump rotation		Derecho ClockWise			
Peso Weight (Kg)		~16			
Relación motor - Toma de Fuerza Engine to PTO ratio	G131-9/14.57-1.0	1:0,978	1:1,129	1:1,355	
	G210-16/14.2-0.83	Normal	1:1,127	1:1,300	1:1,560
		Larga High	1:1,366	1:1,576	1:1,891
	G141-9/14.57-1.0, G211-16/17.0, G231-16/17.0, G241-16K/17.0-1.0	Normal	1:0,941	1:1,086	1:1,303
		Larga High	1:1,127	1:1,300	1:1,560
	G221-9/16.15-1.0	1:0,981	1:1,132	1:1,358	
	G240-16/11.7, G280-16K/11.72-0.69, G280-16/11.72-0.69 NewAMT	Normal	1:1,366	1:1,576	1:1,891
		Larga High	1:1,644	1:1,897	1:2,276
	G260-16/9.75-0.57	Normal	1:1,644	1:1,897	1:2,276
		Larga High	1:1,989	1:2,295	1:2,754
	G211-12K/14.93-1.0, G211-12/14.93-1.0 NewAMT, G281-12K/14.93-1.0, G281-12K/14.93- 1.0, G281-12/14.93-1.0 NewAMT	Normal	1:1,074	1:1,239	1:1,487
		Larga High	1:1,366	1:1,576	1:1,891
	G230-12K/11.67-0.78, G230-12/11.67-0.78 NewAMT, G230-16S/14.2-0.83, G330-12K/11.64-0.78, G330-12/11.64-0.78 NewAMT	Normal	1:1,366	1:1,576	1:1,891
		Larga High	1:1,751	1:2,020	1:2,424

Toma de Fuerza completa = Kit PTO Base + Kit brida + Kit eje
 Complete PTO = Base PTO Kit + Flange Kit + Adapter shaft kit

Mercedes

G131, G210, G211, G141-9, G221, G230, G231, G240, G241,
 G260, G280, G281, G330

Kit Toma de Fuerza base Base PTO Kit
 Posterior Neumático Reforzado, girado
 Rear Pneumatic Heavy Duty, Rotated

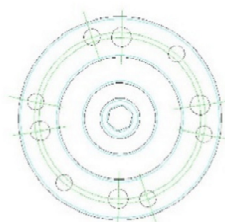
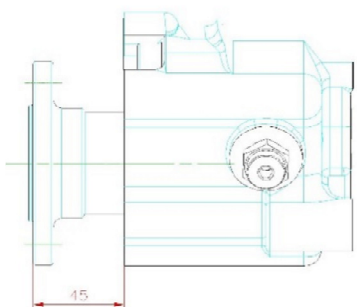


Notas Notes

Notas	Notes
A Toma de aire, rosca 1/8" GAS	A Air connection, thread 1/8" BSP
B Sentido de giro	B Rotation
C Tapón de drenaje	C Oil drain plug
D Interruptor de contacto opcional (9024999)	D Passing contact switch. P/N 9024999
E Interruptor neumático opcional (100070018)	E Pressure switch. P/N 100070018

Tipos de Salida Output Types

Kits conversión a Plato / Drive Flange conversion Kits



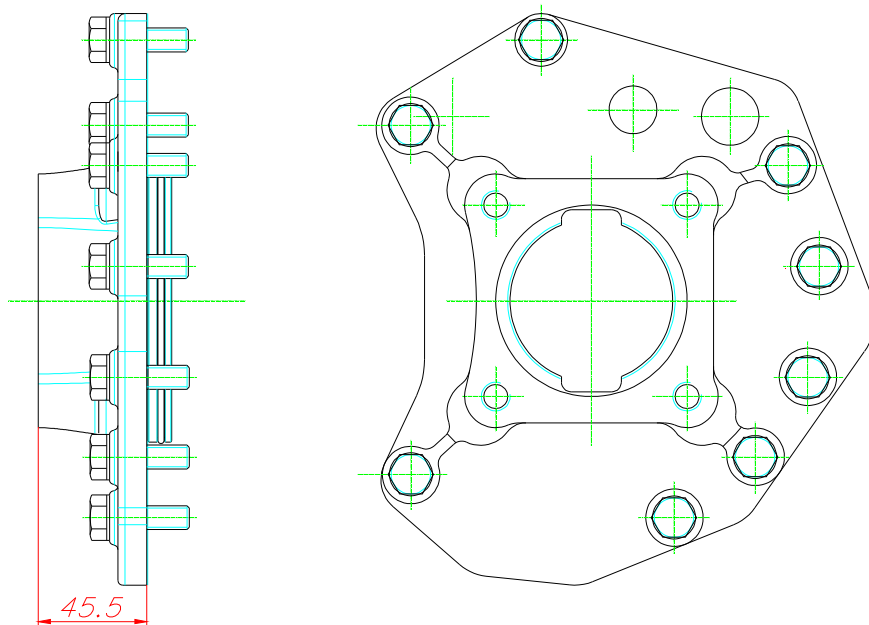
P/N.	906815	906915	907015
SAE	1100	1300	1400
P/N.	907115	907215	907315
DIN	90	100	120

Toma de Fuerza completa = Kit PTO Base + Kit brida + Kit eje
 Complete PTO = Base PTO Kit + Flange Kit + Adapter shaft kit

Mercedes

G131, G210, G211, G141-9, G221, G230, G231, G240, G241,
 G260, G280, G281, G330

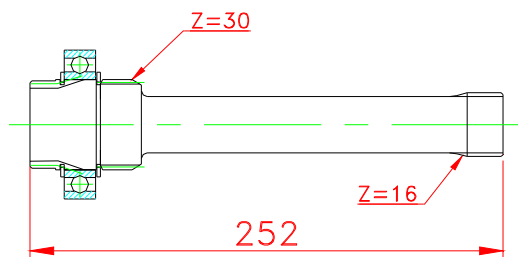
Kit de brida Mercedes
 Mercedes Flange Kit
 P/N. 7027104



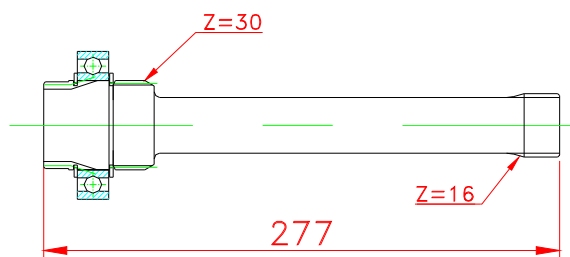
Kit de Eje
 Adaptador

Adapter
 Shaft Kit

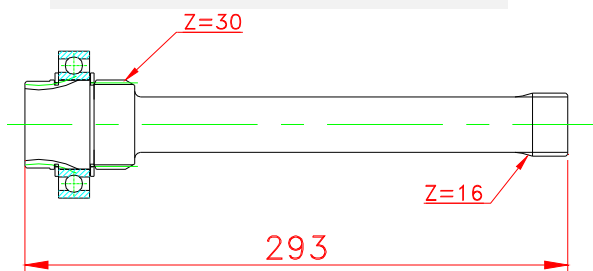
G131, G330, ... P/N. 700904



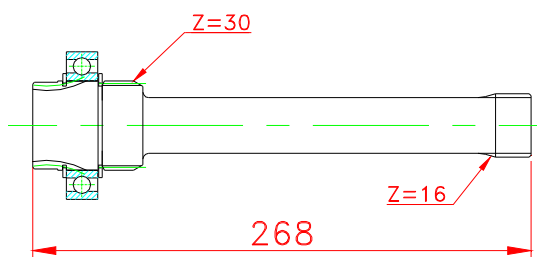
G131, G330, ... Retarder P/N. 703704



G281, ... PowerShift 3
 (Aquatarder) P/N. 7018104



G281-12 PowerShift 3 P/N. 7018304



Códigos y Combinaciones Part Numbers and Combinations

Kit toma de fuerza base Base PTO Kit		+	Kit Brida Flange Kit	+	Kit de eje adaptador Adapter shaft kit
Ratio	P/N.				
1: 1.8	102K003-1		7027104		G131 ... G330 (L=252mm) 700904
1: 1.5	102K103-1			G131 ... G330 Retarder (L=277mm) 703704	
1: 1.3	102K203-1			G281 PowerShift 3 Aquatarder (L=293 mm) 7018104	
				G281-12 PowerShift 3 (L=268 mm) 7018304	