

CAN-AM ON-ROAD KIT - Foldable Passenger Backrest

Product: **CAN-AM On-Road**
Project no: **487802566_rev1**
Instruction Sheet P/N: **487802566**
Revision no: **1**
Revision date:
Item covered: **Foldable Passenger Backrest**



[Foldable Passenger Backrest Kit Installation - Help Video](#)

The following symbols may be used in this document:



WARNING

Indicates a hazardous situation which, if not avoided, could result in death or serious injury.



CAUTION: Indicates a hazard situation which, if not avoided, could result in minor or moderate injury.

NOTICE Indicates an instruction which, if not followed, could severely damage vehicle components or other property.



WARNING

- This kit is designed for specific applicable models only (authorized BRP dealers will confirm model(s)). It is not recommended for units other than the one (those) for which it was sold.
- Should removal of a locking device (e.g. lock tabs, self-locking fasteners, etc.) be required when undergoing disassembly/ assembly, always replace with a new one.
- Torque wrench tightening specifications must strictly be adhered to.



WARNING

Some important safety information and/or operating instructions dedicated to the end user might be included in this instruction sheet. Make sure to give the kit part number as well as the instruction sheet included with this kit to the customer. Verify that the customer has access to all the information required for proper use of the accessory.

NOTE: USE TIGHTENING TORQUES IN THE FOLLOWING TABLE IF NOT OTHERWISE SPECIFIED.

GRADE

	5.8	8.8	10.9	12.9
M4	$1.8 \pm 0.2 \text{ N}\bullet\text{m} (16 \pm 2 \text{ lbf}\bullet\text{in})$	$2.8 \pm 0.2 \text{ N}\bullet\text{m} (25 \pm 2 \text{ lbf}\bullet\text{in})$	$3.8 \pm 0.2 \text{ N}\bullet\text{m} (34 \pm 2 \text{ lbf}\bullet\text{in})$	$4.5 \pm 0.5 \text{ N}\bullet\text{m} (40 \pm 4 \text{ lbf}\bullet\text{in})$
M5	$3.3 \pm 0.2 \text{ N}\bullet\text{m} (29 \pm 2 \text{ lbf}\bullet\text{in})$	$5 \pm 0.5 \text{ N}\bullet\text{m} (44 \pm 4 \text{ lbf}\bullet\text{in})$	$7.8 \pm 0.7 \text{ N}\bullet\text{m} (69 \pm 6 \text{ lbf}\bullet\text{in})$	$9 \pm 1 \text{ N}\bullet\text{m} (80 \pm 9 \text{ lbf}\bullet\text{in})$
M6	$7.5 \pm 1 \text{ N}\bullet\text{m} (66 \pm 9 \text{ lbf}\bullet\text{in})$	$10 \pm 2 \text{ N}\bullet\text{m} (89 \pm 18 \text{ lbf}\bullet\text{in})$	$12.8 \pm 2.2 \text{ N}\bullet\text{m} (113 \pm 19 \text{ lbf}\bullet\text{in})$	$16 \pm 2 \text{ N}\bullet\text{m} (142 \pm 18 \text{ lbf}\bullet\text{in})$
M8	$15.3 \pm 1.7 \text{ N}\bullet\text{m} (135 \pm 15 \text{ lbf}\bullet\text{in})$	$24.5 \pm 3.5 \text{ N}\bullet\text{m} (18 \pm 3 \text{ lbf}\bullet\text{ft})$	$31.5 \pm 3.5 \text{ N}\bullet\text{m} (23 \pm 3 \text{ lbf}\bullet\text{ft})$	$40 \pm 5 \text{ N}\bullet\text{m} (30 \pm 4 \text{ lbf}\bullet\text{ft})$

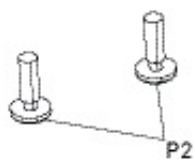
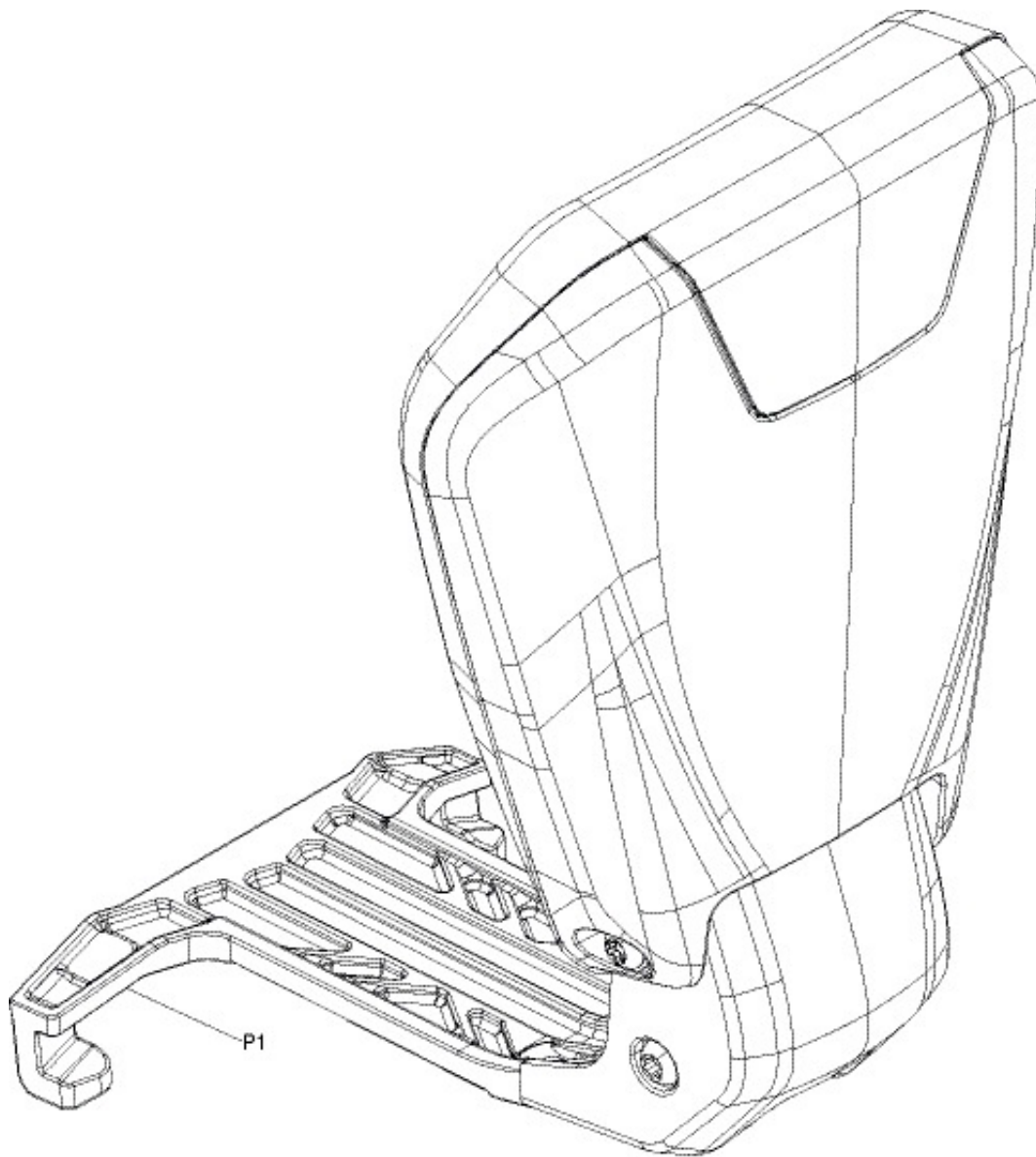
M10	$29 \pm 3 \text{ N}\cdot\text{m}$ ($21 \pm 2 \text{ lbf}\cdot\text{ft}$)	$48 \pm 6 \text{ N}\cdot\text{m}$ ($35 \pm 4 \text{ lbf}\cdot\text{ft}$)	$61 \pm 9 \text{ N}\cdot\text{m}$ ($45 \pm 7 \text{ lbf}\cdot\text{ft}$)	$73 \pm 7 \text{ N}\cdot\text{m}$ ($54 \pm 5 \text{ lbf}\cdot\text{ft}$)
M12	$52 \pm 6 \text{ N}\cdot\text{m}$ ($38 \pm 4 \text{ lbf}\cdot\text{ft}$)	$85 \pm 10 \text{ N}\cdot\text{m}$ ($63 \pm 7 \text{ lbf}\cdot\text{ft}$)	$105 \pm 15 \text{ N}\cdot\text{m}$ ($77 \pm 11 \text{ lbf}\cdot\text{ft}$)	$128 \pm 17 \text{ N}\cdot\text{m}$ ($94 \pm 13 \text{ lbf}\cdot\text{ft}$)
M14	$85 \pm 10 \text{ N}\cdot\text{m}$ ($63 \pm 7 \text{ lbf}\cdot\text{ft}$)	$135 \pm 15 \text{ N}\cdot\text{m}$ ($100 \pm 11 \text{ lbf}\cdot\text{ft}$)	$170 \pm 20 \text{ N}\cdot\text{m}$ ($125 \pm 15 \text{ lbf}\cdot\text{ft}$)	$200 \pm 25 \text{ N}\cdot\text{m}$ ($148 \pm 18 \text{ lbf}\cdot\text{ft}$)
M16	$126 \pm 14 \text{ N}\cdot\text{m}$ ($93 \pm 10 \text{ lbf}\cdot\text{ft}$)	$205 \pm 25 \text{ N}\cdot\text{m}$ ($151 \pm 18 \text{ lbf}\cdot\text{ft}$)	$255 \pm 30 \text{ N}\cdot\text{m}$ ($188 \pm 22 \text{ lbf}\cdot\text{ft}$)	$305 \pm 35 \text{ N}\cdot\text{m}$ ($225 \pm 26 \text{ lbf}\cdot\text{ft}$)
M18	$170 \pm 20 \text{ N}\cdot\text{m}$ ($125 \pm 15 \text{ lbf}\cdot\text{ft}$)	$273 \pm 32 \text{ N}\cdot\text{m}$ ($201 \pm 24 \text{ lbf}\cdot\text{ft}$)	$330 \pm 25 \text{ N}\cdot\text{m}$ ($243 \pm 18 \text{ lbf}\cdot\text{ft}$)	$413 \pm 47 \text{ N}\cdot\text{m}$ ($305 \pm 35 \text{ lbf}\cdot\text{ft}$)

The illustrations in this document show typical construction of the different assemblies and may not reproduce the full detail or exact shape of the parts; however, they represent parts that have the same or similar function.

In the pictures below, parts may have been removed for clarity purposes.

Installation time is approximately 0.4 hour.

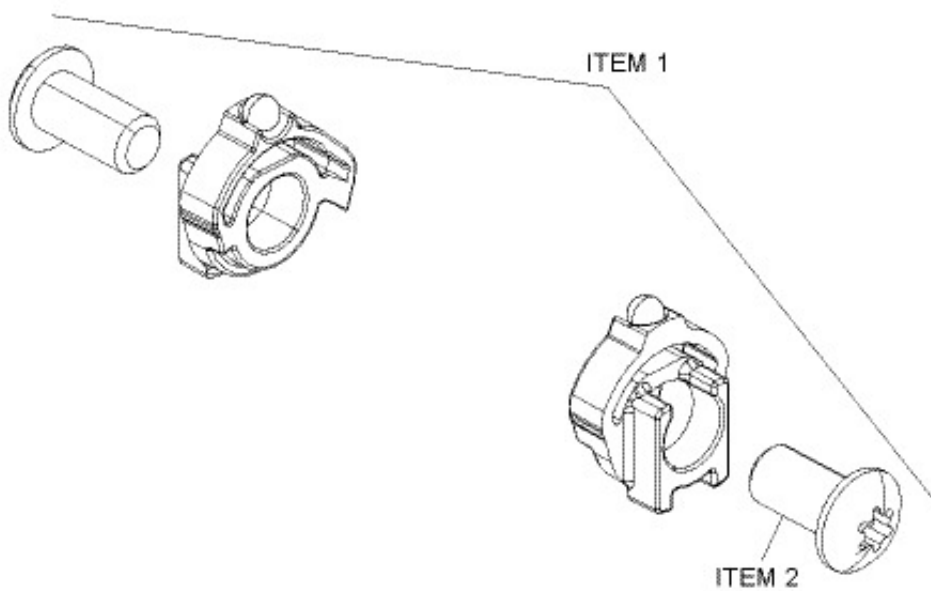
parts to be installed



ITEM	DESCRIPTION	Part number	QTY
P1	Assembled backrest	Not available separately	1
P2	K50x16 Torx screw	250000720	2

NOTE: This kit require the passenger seat (P/N 219400492) or the passenger comfort seat (P/N 219400750) to be installed prior.

Service parts

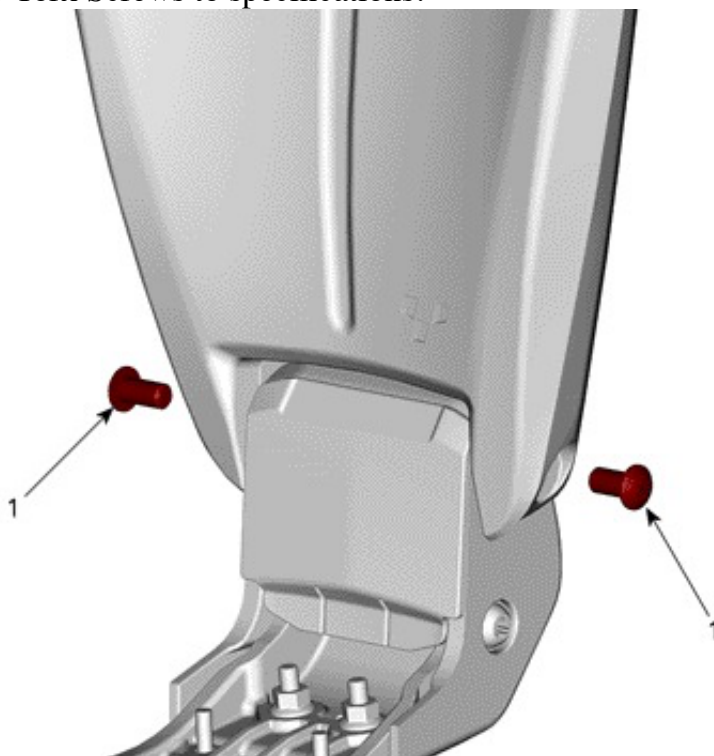


item	DESCRIPTION	Part number	QTY
1	Restrictor Ring Kit	219400994	1
2	M8x30 Torx Screw	250000751	1

instructions

Service procedure

Tighten M8x30 Torx Screws to specifications.



1. M8x30 Torx Screw [ITEM 1]

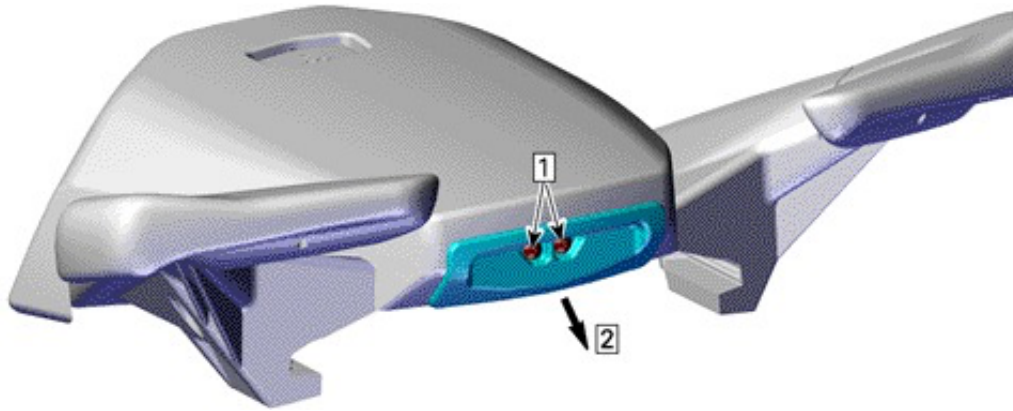
tightening torque

M8x30 Torx screw [ITEM 1]

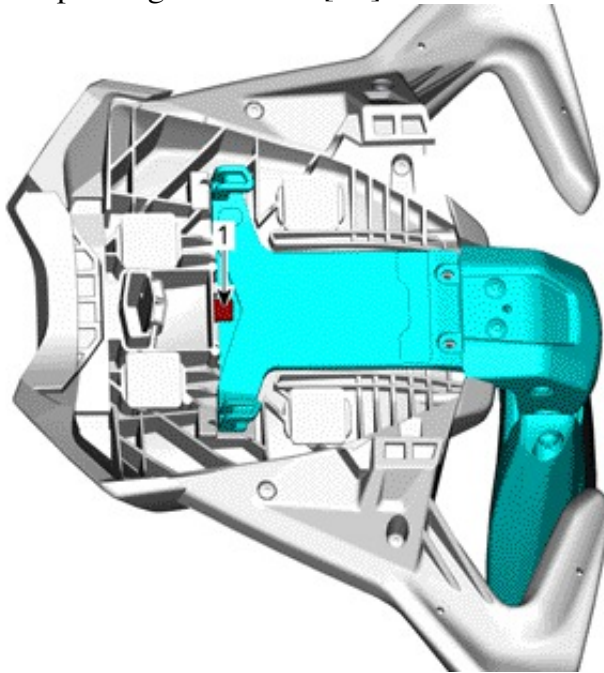
$12 \pm 2 \text{ N}\cdot\text{m}$ ($106 \pm 18 \text{ lbf}\cdot\text{in}$)

Part Installation

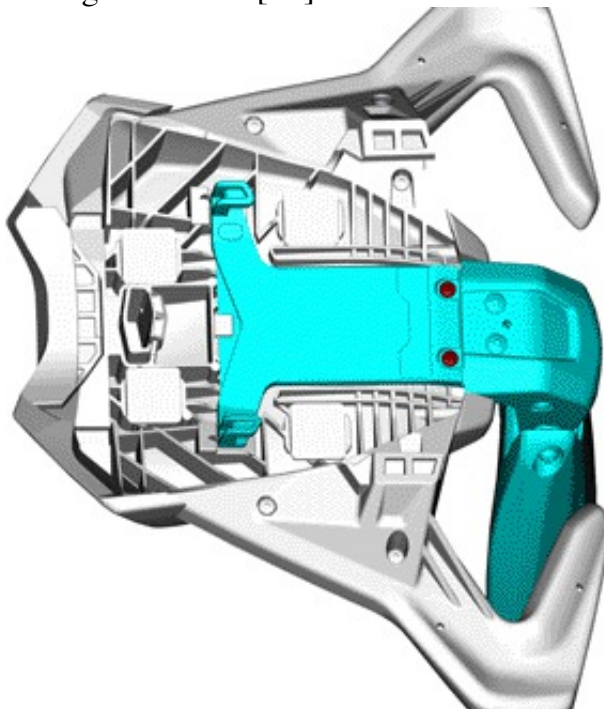
1. For the basic seat (P/N 219400492), remove the cap behind the seat.



1. Remove retaining screws
2. Remove cap
2. Position the passenger backrest [P1] under latch as shown.



1. Latch
3. Fix the passenger backrest [P1] with two K50x16 Torx screw [P2].

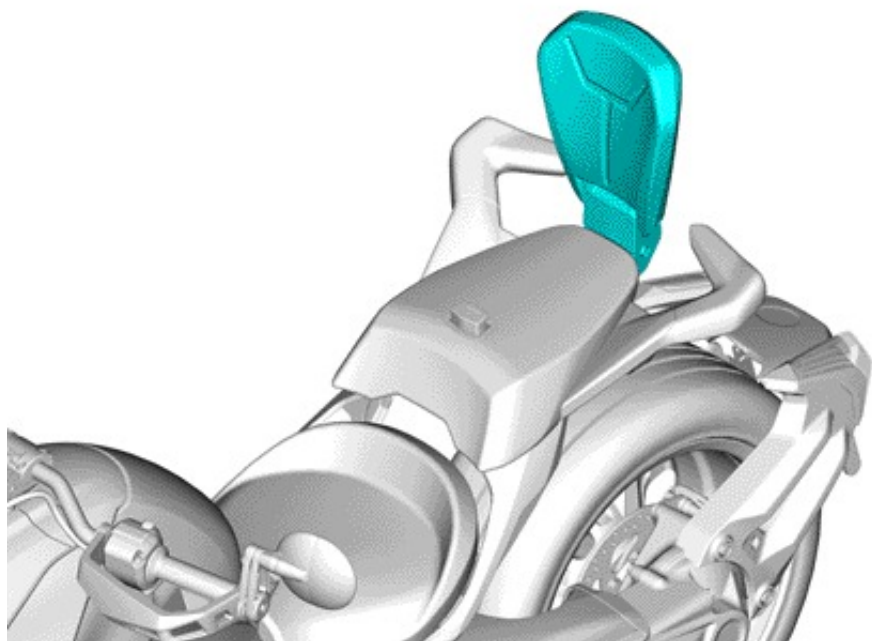


Tightening torque

K50x16 Torx screw [P2]

$1.5 \pm 0.5 \text{ N}\cdot\text{m}$ ($13 \pm 4 \text{ lbf}\cdot\text{in}$)

4. Install the seat according to its procedure. Make sure the lock button is in lock position and make sure the footrest are in lower position when there is a passenger.



NOTE: The backrest is foldable for when there is no passenger.

