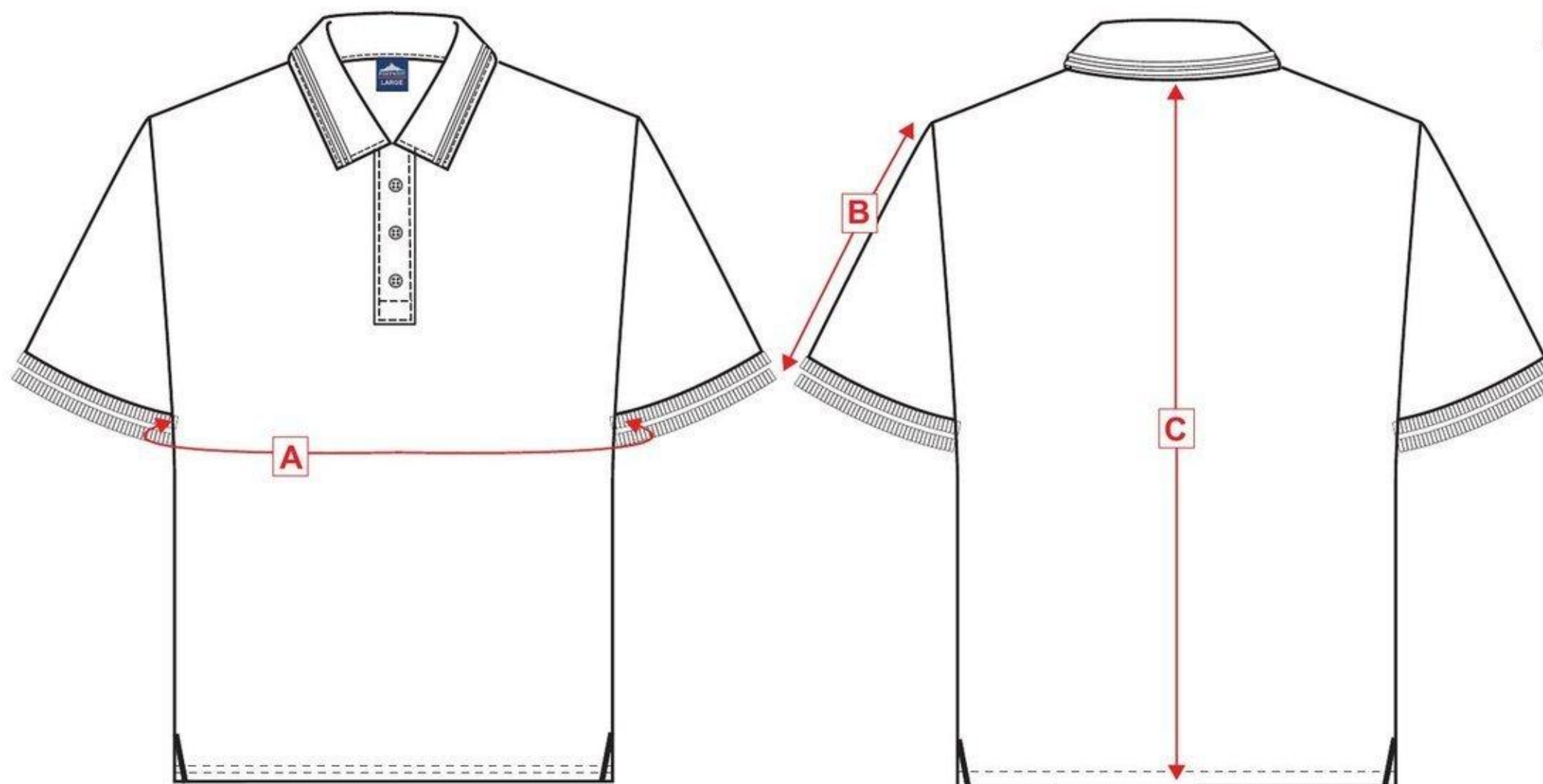


STYLE
NO: B210

DESCRIPTION: Naples Polo Shirt

FABRIC: 65% Polyester, 35% Cotton 210g

COLOUR: Navy, Royal Blue,
Heather Grey, Red, Bottle Green,
Black, Maroon, Purple, Kelly,
Sky, Yellow, White & Dark Navy



Measurements - *fully relaxed fabric in cm's*

AREA		XS	S	M	L	XL	XXL	3XL	4XL	5XL	Tol
Chest	A	94	102	110	118	126	134	142	150	158	+1.5
Sleeve Length including cuff	B	22.5	23	23.5	24	24.5	25	25.5	26	26.5	
Centre Back Length	C	74	76	76	76	76	76	78	78	80	+1