

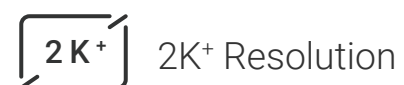


# CB8 Lite 2K+

## Battery-Powered Pan & Tilt Wi-Fi Camera

### All-round protection all day long

The battery-powered CB8 Lite is designed to provide round-the-clock security while minimizing installation and maintenance issues. Taking advantage of EZVIZ's cutting-edge AOV technology, the camera is able to record all day with amazingly low battery consumption, so you can rely on its detection and performance just like a wired camera. Easy to use yet rich in features, the CB8 Lite keeps a watchful eye on your home with a panoramic view, enhanced by its smart tracking function.



2K+ Resolution



Always-On  
Video Mode 2.0



360° Panoramic  
View



AI-Powered  
Human / Vehicle  
Shape Detection



Works with  
EZVIZ Solar Panels  
(Type-C versions)  
for Green Power<sup>1</sup>



Smart Tracking<sup>2</sup>



Color  
Night Vision



Balanced Image  
Exposure  
with Smart Lights



5,200 mAh  
Rechargeable  
Lithium Battery<sup>3</sup>



Supports Wi-Fi 6  
Network (2.4 GHz)



Two-Way Talk



Active Defense  
with Siren  
& Strobe Light



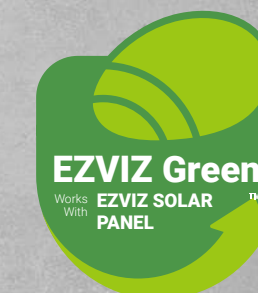
Weatherproof  
Design



Smart Integration  
with Google Assistant  
& Amazon Alexa<sup>4</sup>



Supports MicroSD  
Card (Up to 512 GB)  
& EZVIZ CloudPlay Storage<sup>5</sup>



# Time for battery-powered all-day recording

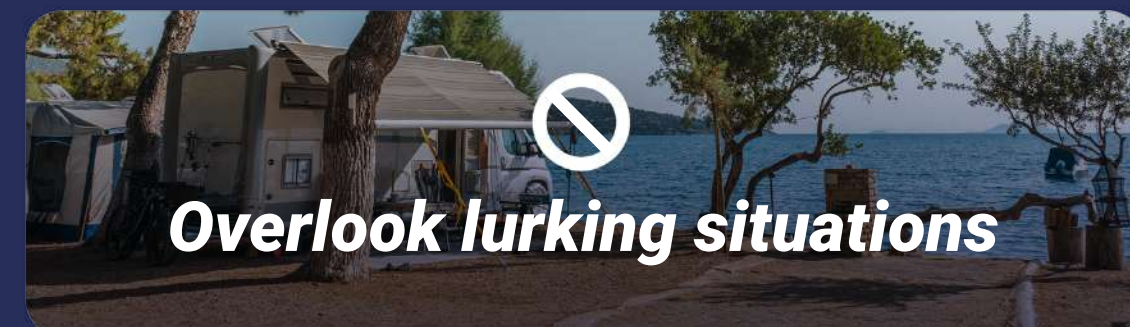
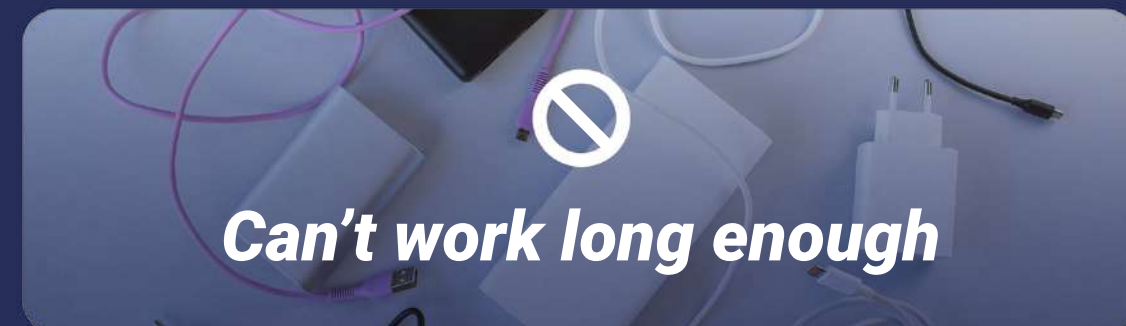
Unlike most battery cameras on the market, which have trouble detecting and recording videos due to short battery life and non-smart sensors, the camera is equipped with EZVIZ's groundbreaking AOV technology to enable all-day recording while ensuring a long standby time with a much greater detection distance.

[About the EZVIZ AOV Technology >](#)



**VS**

## *Most battery cameras in the market*



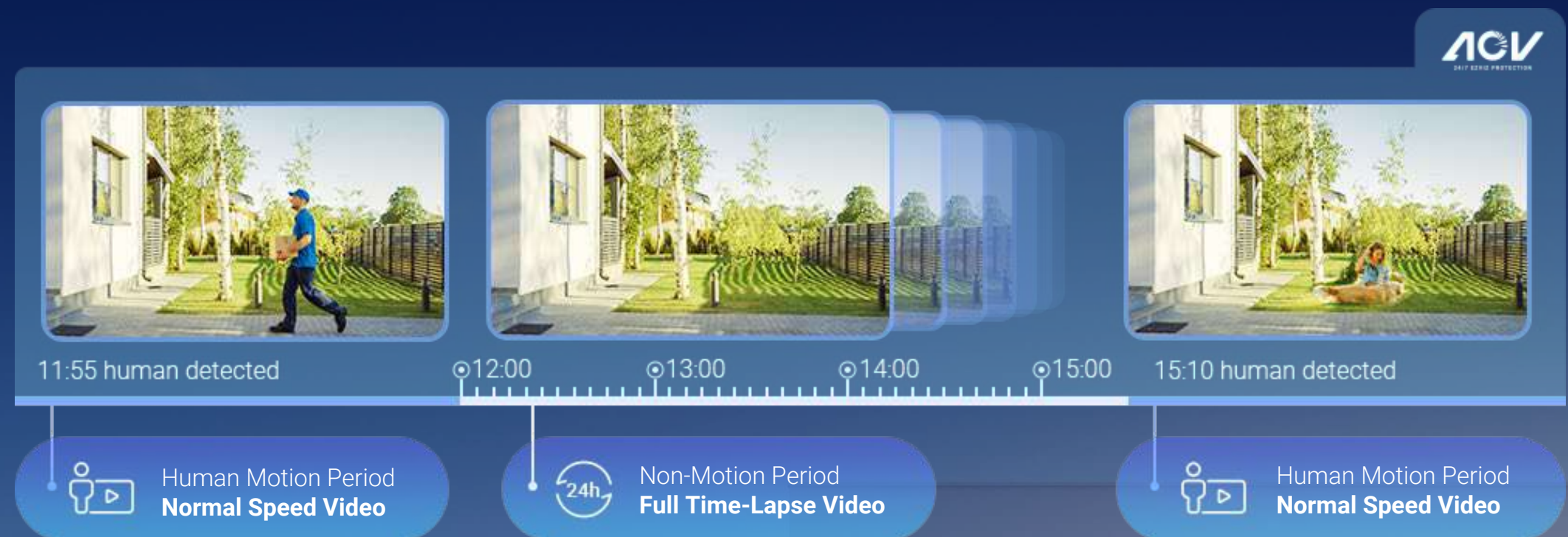
## 01 Always records, scenes or events

When on the AOV mode, the CB8 Lite can capture images at preset time intervals and process them to create a smooth time-lapse video<sup>6</sup> showing the changes over time, even when there is no activity. Once detecting an activity, the camera will switch to normal-speed videos to provide more information. You can now obtain all-day recording on a battery-powered camera without having to plug it into a power outlet.

*Now upgraded to AOV 2.0*

 **Wiser Battery Consumption for All-Day Recordings**

 **Down to 1-Second Ultra-Short Time Interval**



## 02 Always protects, far or near

Unlike other battery cameras that heavily rely on PIR sensors to capture only nearby activities, this camera can detect an approaching person or vehicle at a much greater distance. If a person or vehicle appears, it will immediately notice that and inform you straight away.



## Cost-saving and hassle-free security solution

The CB8 Lite camera completely eliminates the hassle of electricity wiring and frequent recharging – it has a large built-in battery, and supports working with a flexible range of the EZVIZ Solar Panels.<sup>1</sup>



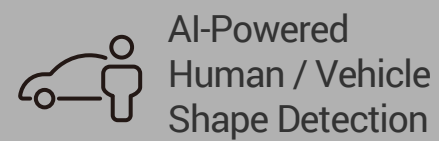
## 360-degree vision that is crisp and clear

Forget about installing multiple cameras to secure different directions – a single CB8 Lite can pan and tilt smoothly to capture an unrestricted 360-degree view. Its sharp 2K<sup>+</sup> resolution lets you see fine details at different angles that matter to you.



## Smarter vision, better detection

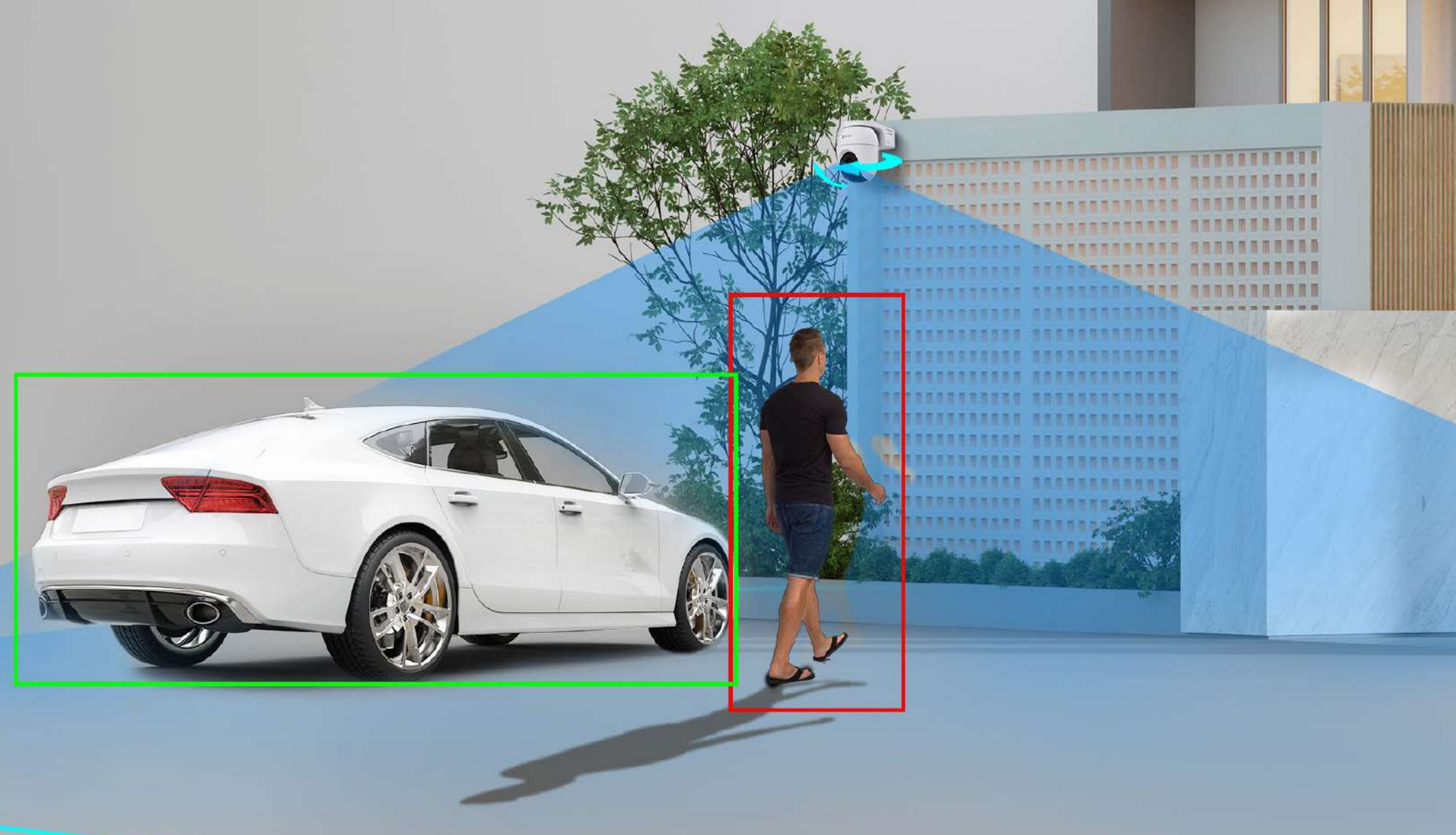
The CB8 Lite is smart enough to distinguish moving people and vehicles from other objects. You no longer need to constantly watch your camera or go through long video files to find a crucial moment – set up the detection preferences and let the camera inform you when it's important.



Customizable  
Detection Zone



No Subscription  
Fee



## Record an unfolding activity with auto smart tracking

Unlike a fixed-angle camera, which can easily lose sight of a moving person in its limited field of view, the CB8 Lite is able to change its sight to keep a close eye on an ongoing activity. As soon as a person enters the detecting zone, the CB8 Lite is activated to lock on the person, rotating to follow the entire movement.

# Night is now bright and colorful

Blurred and pixelated night vision is now a thing of the past. Thanks to its built-in spotlights, the CB8 Lite delivers vivid and crisp visuals even in the dimmest environments. You can choose between two night vision modes as you'd like.



2 Spotlights | Full-Color Night Vision



2 IR Lights | Black & White Night Vision

# Smart adaptation for even and clear images

Wherever you install the CB8 Lite camera, it manages to comprehend the surrounding light to automatically create an evenly exposed, clear image, even in the dark. Users can choose to enable the "Balanced Image Exposure" option via the EZVIZ App at any time, regardless of which night vision mode the camera is in.

For open area



With adaptative smart light



Without adaptative smart light

For edges & corners



With adaptative smart light

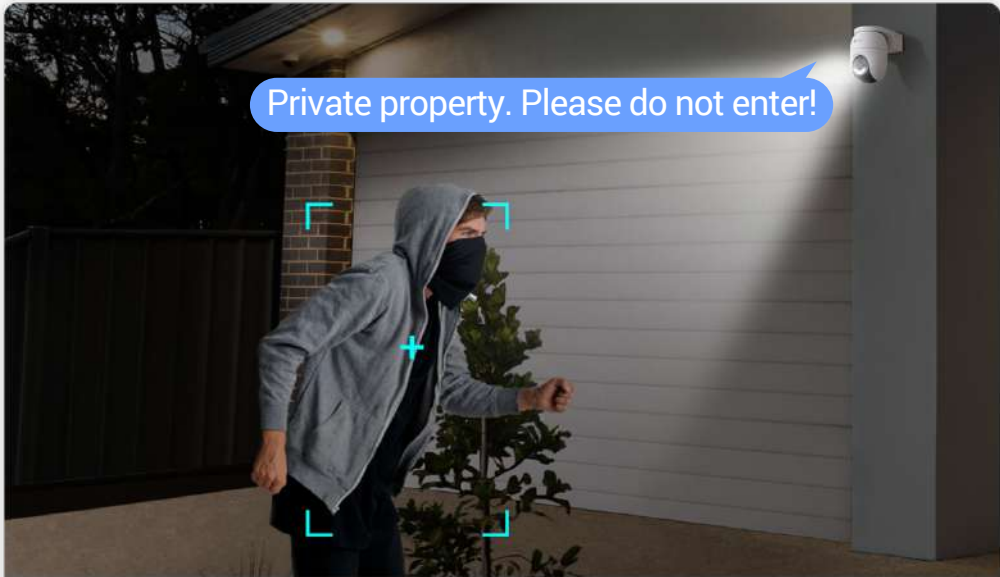


Without adaptative smart light

# Faster connections, boosted coverage

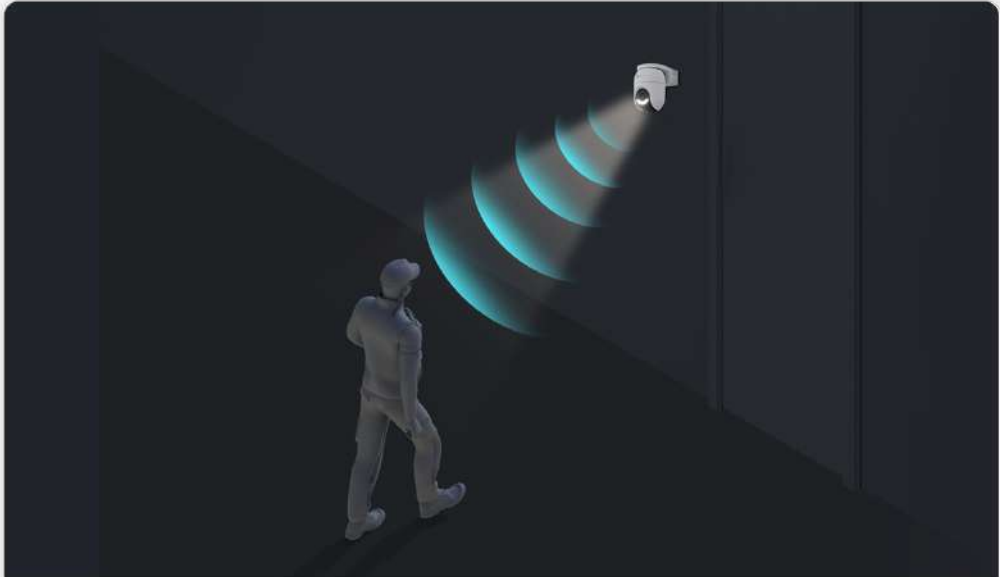
Being Wi-Fi 6-enabled means that the CB8 Lite is far less likely to face network challenges when operating outside your house. In addition to enhanced Wi-Fi connection stability, you can enjoy smoother 2K+ video streaming and faster camera response when controlling it remotely.

- Low-Latency  
2K+ Streaming
- Extended Range  
& Coverage
- Enhanced  
Connectivity
- No Hub  
Required



### Respond with high-quality audio

Easily respond to any visitor by simply using your phone to speak remotely. The camera can also auto-play a recorded voice message when a motion is detected.



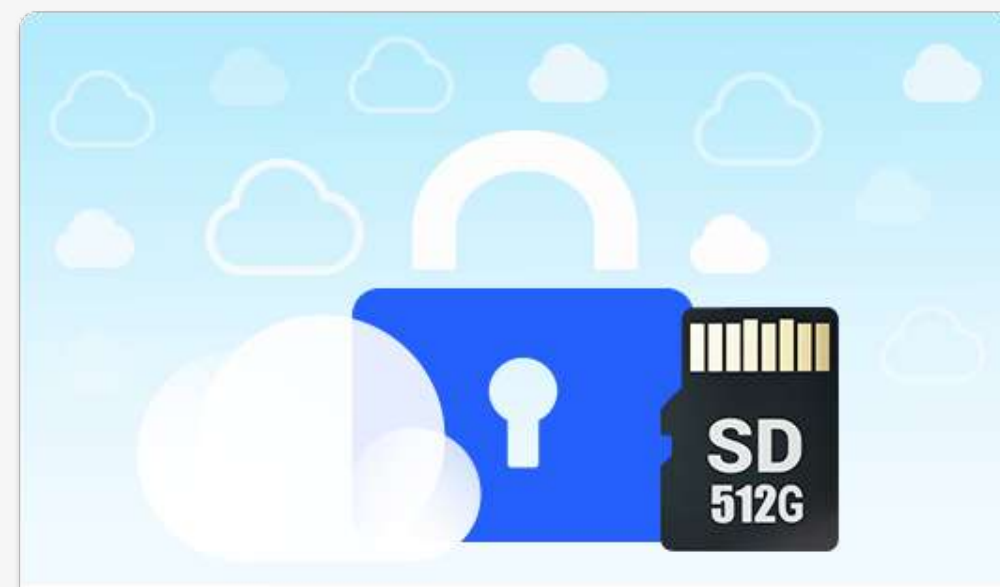
### Use active defense to defer

Upon detection of intruders, the camera will set off a loud siren and flash two dazzling spotlights<sup>8</sup> to let the uninvited strangers know they have been detected.




### Deliver protection, rain or shine

With a robust weatherproof design, the camera ensures continuous operation, making it your reliable partner in all weather scenarios.




**Save your videos with two options**

Safely store important moments or cute memories on a large local storage card, or by subscribing to the EZVIZ CloudPlay.<sup>5</sup>



**Control with your voice, hands-free**

The camera supports easy integration to your existing voice assistants. You can pull up the video feed by simply saying "Alexa" or "Hey Google".<sup>4</sup>



**Enhance video experience with H.265**

The H.265 creates a smoother viewing experience while only using about 50% of the data storage space required by cameras with H.264.<sup>9</sup>

## A cleaner planet, with an EZVIZ Green product

At EZVIZ, we design products with sustainability in mind, building a smart home that's ready for the future and responsible for the planet. By integrating the use of solar technology and planting forests, we enable you to live a smart lifestyle with less carbon emissions.



*Reduces carbon emissions generated by a multi-device smart home*

[Learn more >](#)



**Initiative of the Year**



*Grows the EZVIZ Global Forest Plan with locally beneficial tree*

# We're committed to protecting with trust

We put security as the primary goal of every product and system that we build, and assiduously improve our practices to better protect your device, data and privacy.

[Learn more about our security practices >](#)



End-to-end  
Data Encryption

TLS  
Data Transmission  
Encryption

AES  
Data Encryption

Our global certifications in the fields of **information security, privacy information security, and cloud security**



- 1 The solar panel is not included in the kit. Please verify the product compatibility before making a purchase.
- 2 The CB8 Lite camera only supports auto smart tracking on detected human based on its AI-powered human shape algorithm.
- 3 The battery life of the CB8 Lite is 108 days when on the standard PIR-triggered mode, based on an usage of 5 minutes per day. The battery life of the CB8 Lite is 15 days when camera is set to AOV mode with auto interval. Data comes from EZVIZ Lab's test under standard conditions and may vary due to environmental factors and the frequency of camera activities.
- 4 Amazon Alexa and Google Assistant are not available in certain languages and countries.
- 5 The local storage card must be purchased separately. The cloud storage service is only available in certain markets. Please verify the availability before making a purchase.
- 6 To use this function, a compatible microSD card (sold separately) must be inserted into the camera.
- 7 When the AOV mode is enabled, according to EZVIZ Lab's test results under standard conditions, the camera is able to detect movements at a distance of up to 25 meters during the day, and up to 12 meters during the nighttime. Other tested battery models that use PIR-based detection usually have a detection distance of up to 9 meters. The actual detection range may differ due to environmental factors.
- 8 The spotlights will not flash when color night vision mode is enabled.
- 9 Data from EZVIZ Lab's test results under standard conditions. The video compression efficiency will vary with the frequency and complexity of the activity captured, and other environmental factors.

Camera

Image sensor	1/3" 4-Megapixel Progressive Scan CMOS Sensor
Minimum Illumination	0.01 Lux @ (F1.6, AGC ON), 0 Lux with IR
Shutter Speed	Self-adaptive shutter
Lens	4 mm @ F1.6 Diagonal angle: 90° Horizontal angle: 75° Vertical angle:40°
PT Angle	Pan: 340°, Tilt: 80°
Day & Night	IR-cut filter with auto switch
DNR	3D DNR
Night Vision	15 m

Video & Audio

Max Resolution	2K+ (2560 × 1440)
Frame Rate	15 fps. Self-adaptive during network transmission
Video Compression	H.265 / H.264
Video Bit Rate	Ultra-HD; Full HD; Hi-Def .Adaptive bit rate.
Audio Bit Rate	Self-adaptive
Max. Bit Rate	4 Mbps

Network

Wi-Fi Standard	IEEE802.11b, 802.11g, 802.11n, 802.11 ax
Frequency Range	2.4 GHz ~ 2.4835 GHz
Channel Bandwidth	Supports 20 MHz
Security	64/128-bit WEP, WPA/WPA2, WPA-PSK/WPA2-PSK
Transmission Rate	11b: 11 Mbps, 11g :54 Mbps, 11n :72 Mbps, 11ax:114 Mbps
Wi-Fi Pairing	AP pairing
Protocol	EZVIZ Cloud Proprietary Protocol
Interface Protocol	EZVIZ Cloud Proprietary Protocol
Minimum Network Requirement	4 Mbps

Function

Smart Alarm	AI-powered human shape detection AI-powered vehicle shape detection
Two-Way Talk	Supports
General Function	Anti-Flicker, Heart Beat, Password Protection, Watermark

Storage

Local Storage	Supports microSD card (max. 512 GB)
Cloud Storage	EZVIZ CloudPlay storage (Subscription required)

General

Operating Conditions	-20°C to 50°C (-4°F to 122°F ), Humidity 95% or less (non-condensing)
IP Grade	IP65
Power Supply	DC 5 V / 2 A (Adapter needs to be purchased separately)
Battery Capacity	5200 mAh
Power Consumption	Max.10 W
Product Dimensions	157.3 × 102.3 × 147.8 mm (6.19 × 4.02 × 5.81 inch)
Packaging Dimensions	205 × 145 × 194 mm (8.07 × 5.70 × 7.63 inch)
Weight	Net weight: 594 g (20.9 oz) With package: 896 g (31.6 oz)

## In the box

- CB8 Lite Camera
- Drilling Template
- Screw Kit
- Power Cable
- Regulatory Information × 2
- Quick Start Guide

## Certifications

CE / REACH / WEEE / RoHS

Specifications are subject to change without notice. "🌈", "EZVIZ" and other trademarks and logos are the properties of EZVIZ in various jurisdictions.