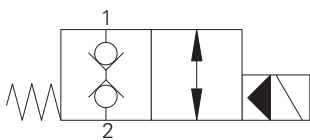


## SBV11-10-C - Solenoid valve

2-way, 2-position, normally closed, bi-directional, poppet type solenoid valve  
76 L/min (20 USgpm) • 350 bar (5000 psi)



### Operation

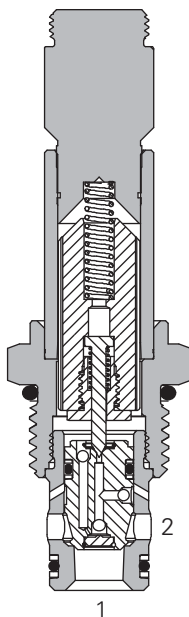
In the de-energized position the valve is blocked in both directions.

When the solenoid is energized the pilot poppet is released from the seat allowing the main poppet to open. A series of internal check valves allows full flow in both directions.

### Features

Hardened and ground working parts. Lapped seat for low leakage. IP69K Tough coil compatibility. Continuously rated. Compact design with low pressure drop. 350 bar working pressure.

### Sectional view



### Performance data

#### Ratings and specifications

Performance data is typical with fluid at 21,8 cSt (105 SUS) and 49°C (120°F)

Typical application pressure (all ports)	350 bar (5000 psi)
Cartridge fatigue pressure (infinite life)	310 bar (4500 psi)
Rated flow	76 L/min (20 USgpm)
Internal leakage	5 drops/min, max @ 350 bar (5000 psi)
Temperature range	-40° to 100°C (-40° to 212°F)
Coil duty	Continuous from 85% to 110% of nominal voltage
Cavity	C-10-2
Fluids	All general purpose hydraulic fluids such as: MIL-H-5606, SAE 10, SAE 20 etc.
Filtration	Cleanliness code 18/16/13
Housing material (standard)	Aluminum or steel
Weight cartridge only	0,18 kg (0.39 lbs)
Seal kit	565806 (Buna-N), 889627 (Viton®)

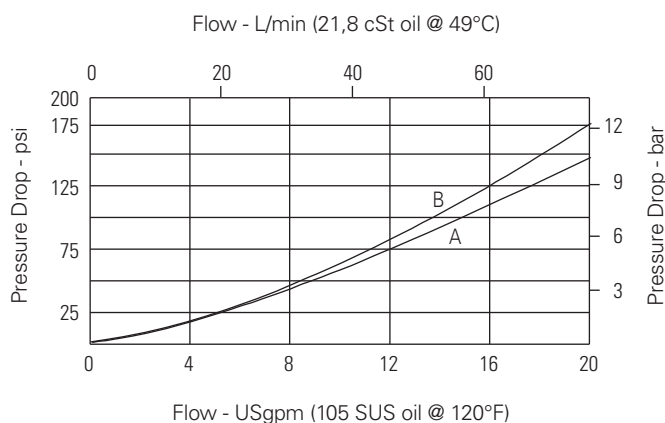
Viton is a registered trademark of E.I. DuPont

### Description

This is a 2-way 2-position, high pressure bi-directional, pilot operated, normally closed poppet type screw in cartridge valve. The valve is ideal for isolating and holding actuators in position.

### Pressure drop

Cartridge only



A - Port 1 to port 2

B - Port 2 to port 1

# SBV11-10-C - Solenoid valve

2-way, 2-position, normally closed, bi-directional, poppet type solenoid valve  
76 L/min (20 USgpm) • 350 bar (5000 psi)

## Model code

<b>SBV11</b>	<b>10</b>	<b>(V)</b>	<b>C</b>	<b>(*)</b>	<b>**</b>	<b>****</b>	<b>*</b>	<b>H</b>	<b>- 00</b>
<b>1</b>	<b>2</b>	<b>3</b>	<b>4</b>	<b>5</b>	<b>6</b>	<b>7</b>	<b>8</b>	<b>9</b>	<b>10</b>

### 1 Function

**SBV11** - Solenoid  
bi-directional valve

### 2 Size

**10** - 10 size

### 3 Seal material

**Blank** - Buna-N

**V** - Viton®

### 4 Style

**C** - Normally closed

### 5 Valve housing material

**Blank** - Cartridge only

**A** - Aluminum

**S** - Steel

### 6 Port size

Code	Port size	Housing number	
		Aluminium	Steel
<b>0</b>	Cartridge only		
<b>2G</b>	1/4" BSPP	876702	02-175102
<b>3G</b>	3/8" BSPP	876703	02-175103
<b>3B</b>	3/8" BSPP	02-175462	—
<b>6H</b>	SAE 6	876700	—
<b>6T</b>	SAE 6	566151	02-175100
<b>8H</b>	SAE 8	876701	—
<b>8T</b>	SAE 8	—	02-175101

See section J for housing details.

### 7 Voltage rating

**00** - No coil

**12D** - 12VDC

**24D** - 24VDC

**36D** - 36VDC

**24A** - 24VAC

**115A** - 115VAC

**230A** - 230VAC

**12B** - 12VDC/w diode\*

**24B** - 24VDC/w diode\*

\*Optional arc suppression diode.

### 8 Connector types

**Blank** - No coil

**G** - ISO 4400 DIN 43650

**Q** - Spade terminals

**W** - Flying lead

**N** - Deutsch (DC only)

**Y** - Amp JR (DC only)

**D** - Metripack 150 male  
(DC only)

**J** - Metripack 280 male  
(DC only)

### 9 Coil series

**H** - 10 series, 29 W

For coil part numbers and dimensions  
see section C.

### 10 Special features

**00** - None

(Only required if valve has special features,  
omitted if "00.")

## Dimensions

mm (inch)

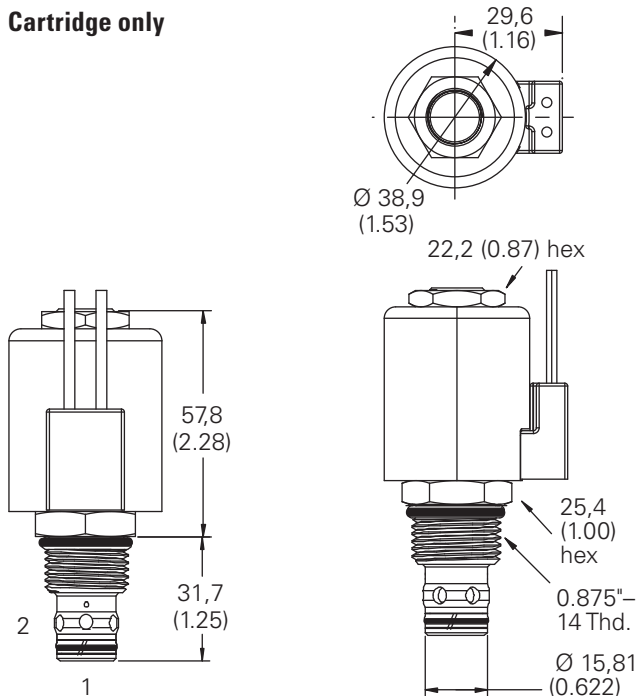
Torque cartridge in housing

**A** - 47-54 Nm (35-40 ft lbs)

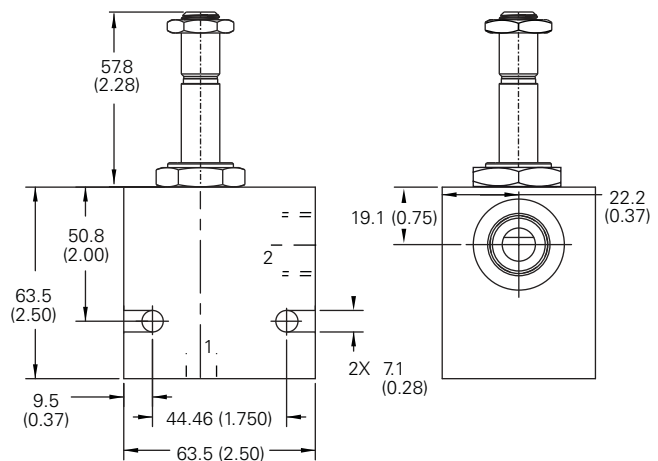
**S** - 68-75 Nm (50-55 ft lbs)

**Note:** For applications above 210  
bar please consult our technical  
department or use the steel  
body option.

## Cartridge only



## Installation drawing (Steel)



### Warning

Maintain 5-8 Nm  
(4-6 ft lbs) maximum torque  
on valve tube nut.  
Over tightening may cause  
valve failure.

### Warning

Aluminum housings can  
be used for pressures up  
to 210 bar (3000 psi). Steel  
housings **must** be used for  
operating pressures above  
210 bar (3000 psi).

Where measurements are critical request certified drawings. We reserve the right to change specifications without notice.