

STYLE NO: S174

DESCRIPTION: Two tone Cotton Comfort Polo Shirt

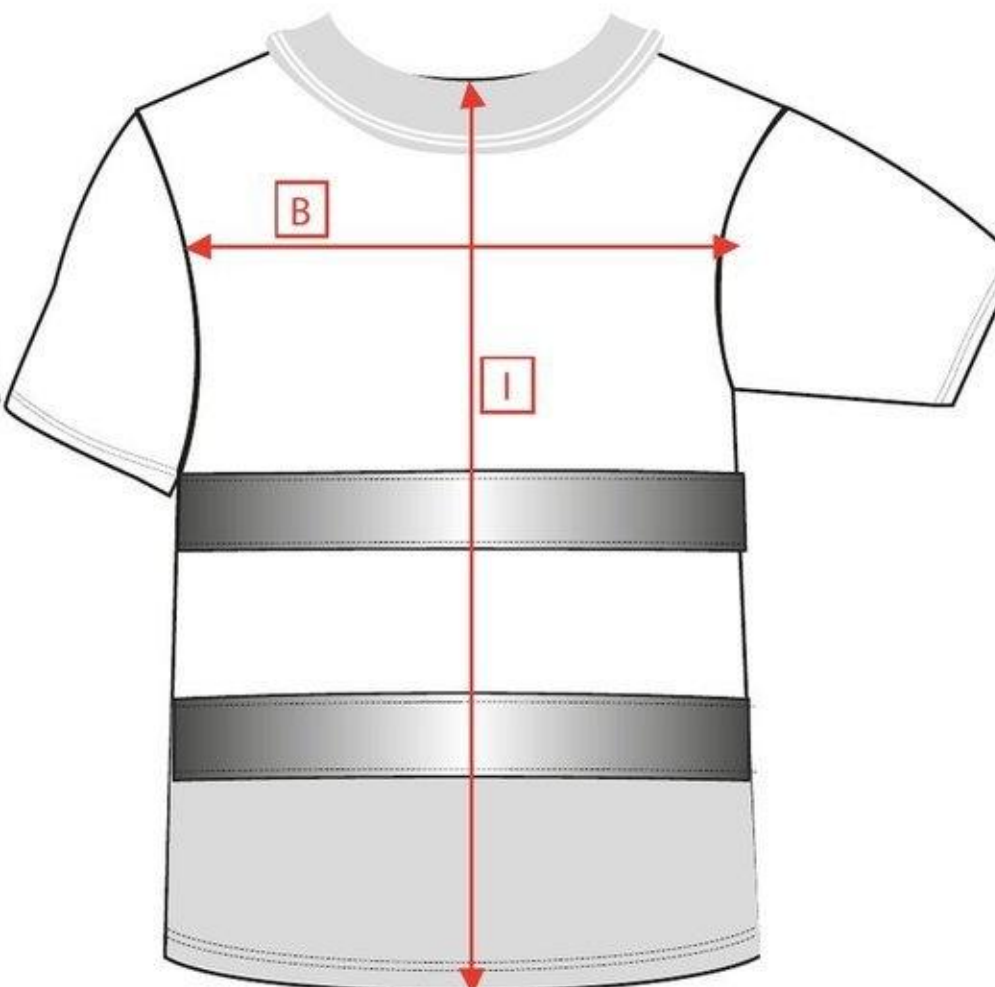
FABRIC: 55% Cotton, 45% Polyester

COLOUR: Yellow & Orange

Front



Back



Measurements are for a fully relaxed fabric:

AREA		XS	S	M	L	XL	XXL	XXXL	4XL	5XL	6XL	7XL	Tol
		80-88	92-96	100-104	108-112	116-124	128-132	136-140	144-148	152-160	164-172	176-184	Plus
Chest	A	100	106	114	122	134	142	150	158	170	182	194	1
Across Back (from 12cm below neck)	B	46	48	50	52	55	57	59	61	64	67	70	0.5
Hem circumference	H	100	106	114	122	134	142	150	158	170	182	194	0.5
Centre Back Length	I	74	75	76	77	78	79	80	81	82	83	84	1