

We heat like the cavalry



YEARS **ELTERM**[®]

Advanced
CH In-line heaters:
Boatswain LED and Boatswain LED PRO



Ideal as peak heat source in heat pump systems



Independent heating device of a CH system.
e.g.: while awaiting the installation of a heat pump or
other heat source



Ideal for use with PV
installations
in conjunction with:



Ideal for use with gas and solid fuel boilers
as an alternative heating device, e.g.
in the absence of gas or solid fuel



Ideal for use with a gas boiler, the boiler
operating counter switches the gas boiler on
when the energy consumption limit set on the
Boatswain LED panel is reached.



Green energy
clean air programme





Control panel LED



Multifunctional control system



Heating element 3/6/8 i 12 kW



2 x 6/4" Ext



The heater can be operated with any potential-free (0V) room controller, both wired and wireless

Green energy clean air programme



Insulation EPP



Assembly profile



Universal connection loss header function



4 x 5/4" Int.

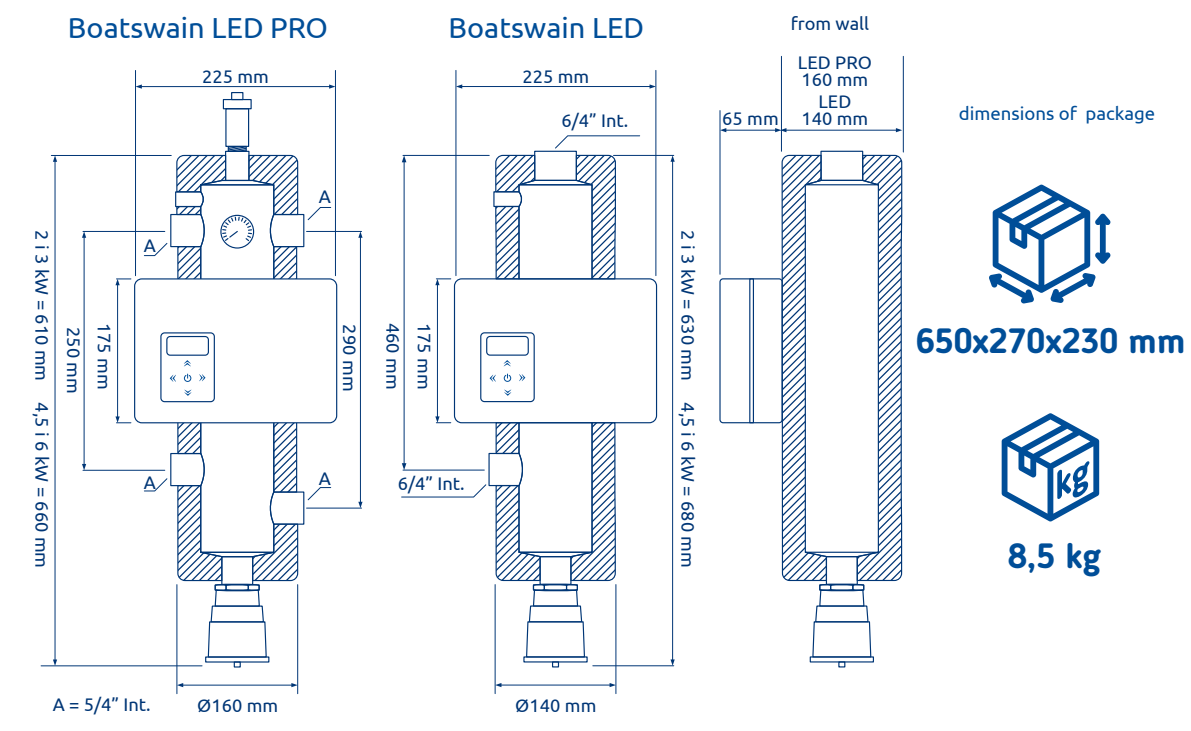


code	model	power max	heaters	Manual power distribution PID	
234003	Boatswain LED 3 kW 230/400V	3 kW	1 + 1 + 1 kW	33% 66% 100%	Yes
234006	Boatswain LED 6 kW 230/400V	6 kW	2 + 2 + 2 kW	33% 66% 100%	Yes
234008	Boatswain LED 8 kW 230/400V	8 kW	2,7 + 2,7 + 2,7 kW	33% 66% 100%	Yes
234012	Boatswain LED 12 kW 230/400V	12 kW	4 + 4 + 4 kW	33% 66% 100%	Yes

code	model	power max	heaters	Manual power distribution PID	
254003	Boatswain LED PRO 3 kW 230/400V	3 kW	1 + 1 + 1 kW	33% 66% 100%	Yes
254006	Boatswain LED PRO 6 kW 230/400V	6 kW	2 + 2 + 2 kW	33% 66% 100%	Yes
254008	Boatswain LED PRO 8 kW 230/400V	8 kW	2,7 + 2,7 + 2,7kW	33% 66% 100%	Yes
254012	Boatswain LED PRO 12 kW 230/400V	12 kW	4 + 4 + 4kW	33% 66% 100%	Yes

Protection selection	3 kW	3 kW	6 kW	6 kW	8 kW	9 kW	12 kW
	1 phase	3 phases	1 phase	3 phases	3 phases	3 phases	3 phases
fuses (A)	1 x 16	3 x 6	1 x 32	3 x 10	3 x 16	3 x 16	3 x 20
power wire (mm²)	3 x 2,5	5 x 1,5	3 x 4	5 x 2.5	5 x 2,5	5 x 2,5	5 x 4

* The specific diameter of the supply cable is selected by the electrician on the basis of an analysis the local conditions.



Get as much as you can from PV



Electronic control panel

Microprocessor control system

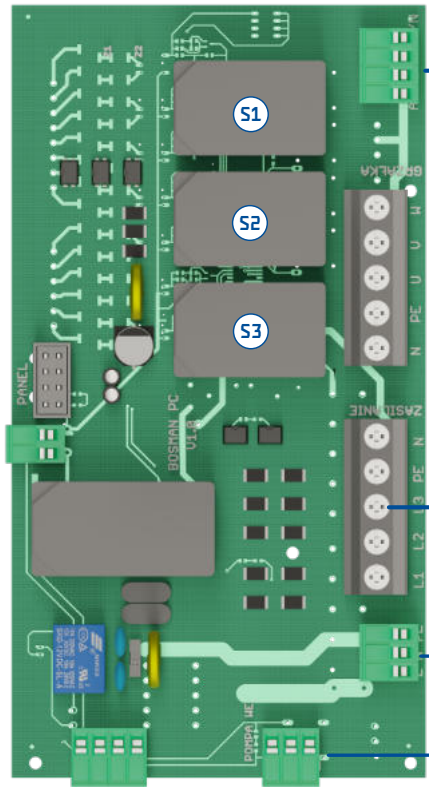
Boatswain LED work counter
- energy consumption setting
- stop signal of Boatswain LED operation

End of limit
Disconnects the gas boiler when the Bosman LED is switched on. Switches the gas boiler when the set energy consumption limit is reached.

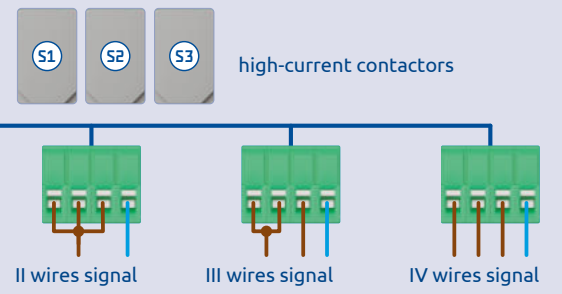
Voltage-free external thermostat (0V)
Programming the operation of the Boatswain LED

CH pump control
Possibility to control an external CH pump independently of the heat source

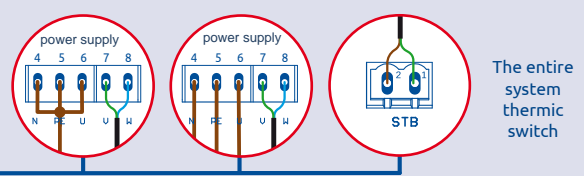
Diagram of control panel



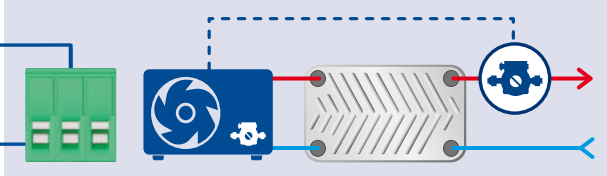
Block I
Control of in-line heater- III-steps 230V



Block II
Main power supply 230/400 V



Block III - variant A
Control of CH pumps. - signal from heat pump



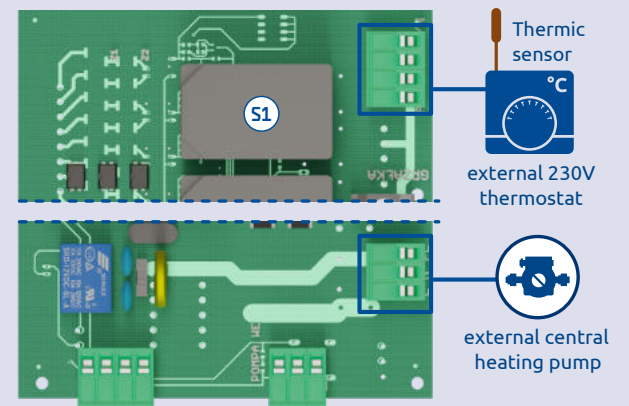
Block III - Variant B stand alone device III variants

I variant - temporary absence of heat pump

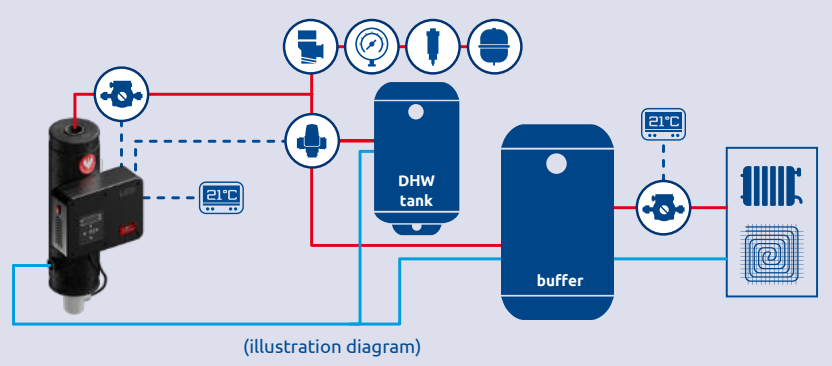


II variant - temporary work - waiting for the heat pump to be installed

III variant - house under construction - you are afraid of an external heat source

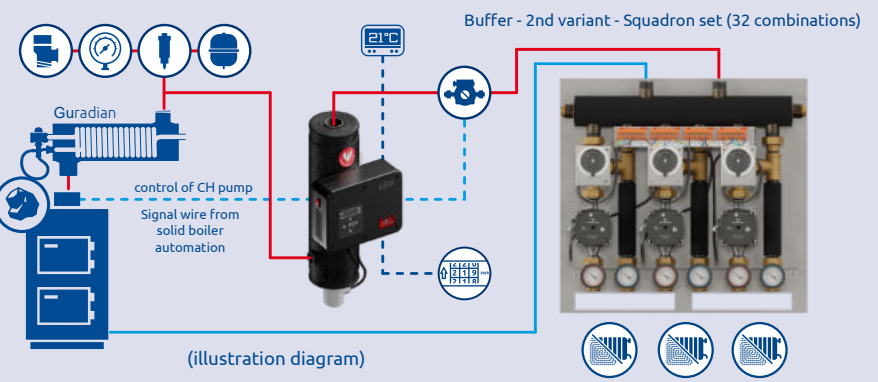
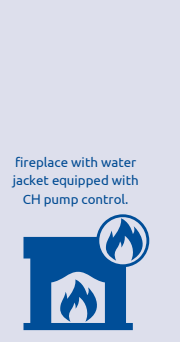
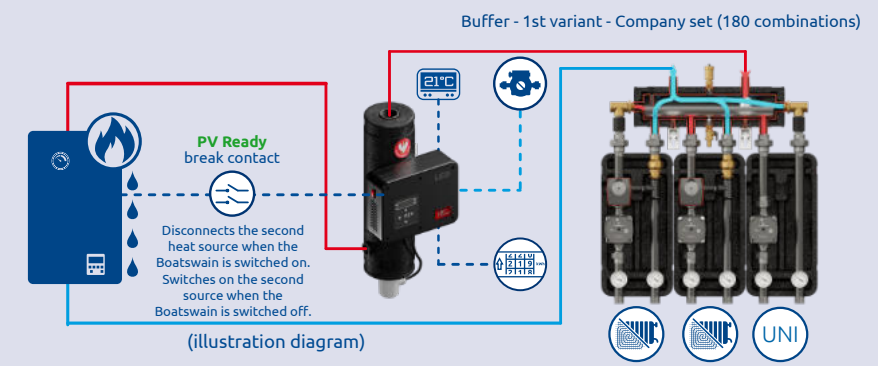


Very low cost of investment



- DHW set (optional) electric valve control
- Three-way electric valve + servo
- Domestic hot water priority on/off
- DHW temperature sensor for tank

Ideal for use with a gas or solid-fuel boiler



Block IV
Stand alone heater device III variants



- I variant - temporary absence of heat pump
- II variant - temporary operation - awaiting heat pump installation
- III variant - house under construction - concerned about external heat source



Ideal for use with gas boilers, solid fuel boilers and fireplaces with water jackets



temporary heat source - very low cost

