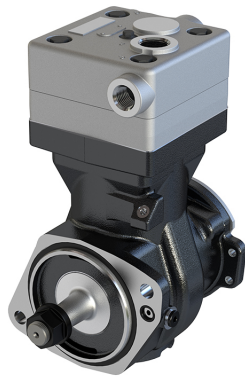


**Application:** ISB/QSB/ISF ENGINE /C 1317E / C 1517E / C 1717E / C 2428E

**678.01.1000**

**678.01.2000  
(WITH GEAR)**

OEM	OE
9111535520	4934957 BG7X2875BA

<b>Cylinder Bore</b>	Ø85
<b>Stroke</b>	56
<b>Swept Volume</b>	318
<b>Air Inlet Port Size</b>	3/4-14NPT
<b>Air Delivery Port Size</b>	3/4-14NPT
<b>Number of Cylinders</b>	1
<b>Through Drive</b>	YES
<b>Unloader Port Size</b>	M10*1
<b>Water Or Air Cooled</b>	W
<b>Water Inlet Port Size</b>	1/2-14NPT
<b>Water Delivery Port Size</b>	1/2-14NPT
<b>Water Cooled Valve Plate</b>	YES

## Components

678.01.1100	Crankcase	OEM	OE

617.01.1200	Cylinder Head	OEM	OE
		9111558042	

617.01.1220	Cylinder Upper Head	OEM	OE
		9111556554 8845025794	

617.01.1230	Cylinder Lower Head	OEM	OE
		9111556524 8845032002	

143.01.1400	Connecting Rod	OEM	OE
		9111457372 9111457382 9111537302	3357396 0001312417 0001312517

678.01.1500	Crankshaft	OEM	OE

663.01.1510	Pump Adapter	OEM	OE

678.01.1600	Bearing Cover	OEM	OE

136.01.1700	Piston With Rings (STD)	OEM	OE
		9115016242 9115016252 9120006272	1283781 1698686 0001303417 0001305317 81541196040
136.01.1700-Ø85.00 mm 136.01.1710-Ø85.25 mm 136.01.1720-Ø85.50 mm 136.01.1730-Ø85.75 mm 136.01.1740-Ø86.00 mm			

132.01.1800	Piston Ring Kit (STD)	OEM	OE
		9115019202 9118019202	3094621 0011311111
132.01.1800-Ø85.00 mm 132.01.1810-Ø85.25 mm 132.01.1820-Ø85.50 mm 132.01.1830-Ø85.75 mm 132.01.1840-Ø86.00 mm			

678.01.2900	Gear	OEM	OE
			4981225

575.01.2600	Bushing	OEM	OE
		9111552004	

136.01.1900 Cap		OEM	OE
		8950735894	1304881 3094835 11712508 0001312321


136.01.2700 Screw Kit		OEM	OE
		8912119994	

293.01.1580 Nut For Crankshaft		OEM	OE
		8103410034	0029906650

617.01.2300 Repair Kit With Bushing		OEM	OE
			


617.01.2350 Repair Kit w/o Bushing		OEM	OE
		9111559202	

617.01.2330 Repair Kit		OEM	OE
			

617.01.1280 Head Repair Kit		OEM	OE
			

617.01.2100 Gasket & Sealing Kit		OEM	OE
		9111559212	

617.01.2200 Valve Kit		OEM	OE
			

599.01.2500 Unloader Valve Kit		OEM	OE
			

		OEM	OE

		OEM	OE

		OEM	OE

		OEM	OE

		OEM	OE

		OEM	OE

		OEM	OE

		OEM	OE