

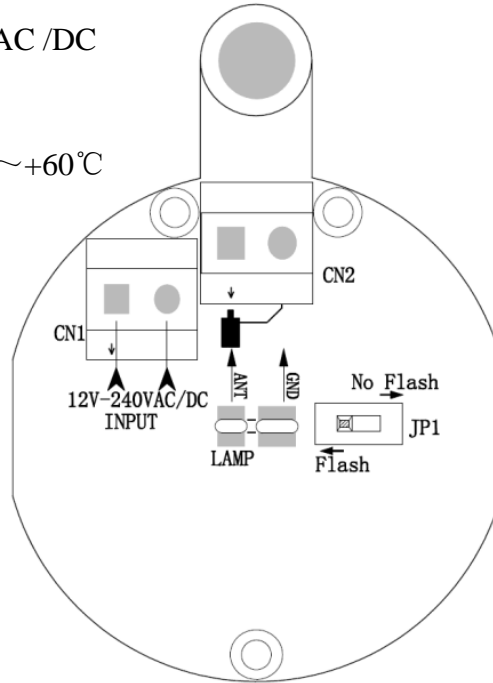
F600X Flash lamp user manual

I. Safety Instruction

1. For security, please read the user manual carefully before initial operation;
2. Please be sure the power is off before connecting, the product is produced without fuse;
3. This system must not endanger life or property during the running failure or its security risks have been eliminated

II. Technical Specification

1. Working voltage: 12-240VAC /DC
2. Loading capacity: <3W
3. Flicker Frequency: 1HZ
4. Working temperature: -20 ~+60°C
5. Size: φ86* 125mm
6. Weight: 83g



III. Connecting Instruction

1. Port CN1 is for connecting the power input, working voltage is 12-240VAC/DC
2. Port CN2 is for connecting the antenna to extend the effective distance of controller

IV. Instructions

4. 1 LED will flicker in 1HZ after power on
4. 2 JP1 switch

It's the switch for switching LED in flickering or lighting,
 When JP1 at flash, LED will flicker in 1Hz after power on;
 When JP1 at No flash, LED will light after power on

Danger: The whole product including the LED is with high voltage when power on (Power off before open the case)

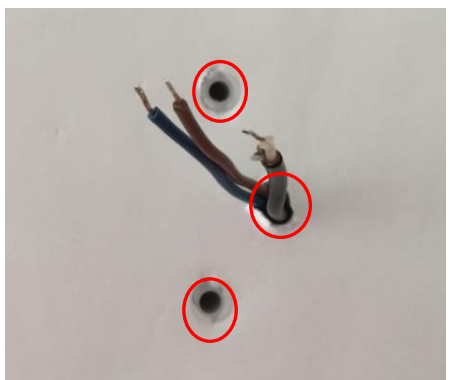
V. Installation

5.1 F6000 with bracket

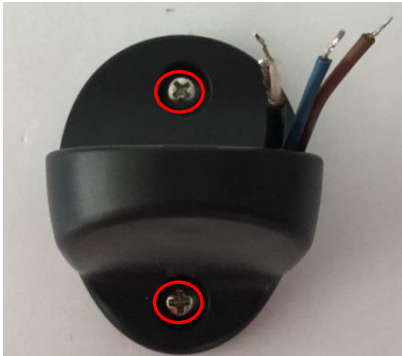
1. Open the package ,take out the accessories and rotate the antenna anticlockwise.

2. Mark the 2 holes as it in picture

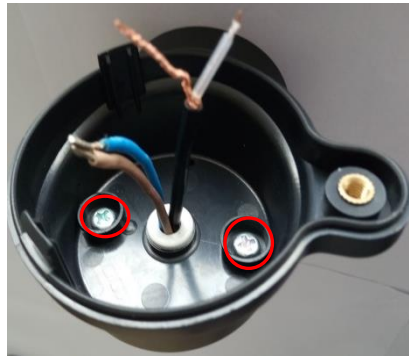
3. Drill two 6mm diameter holes and one 10mm diameter hole. Then put the expansion tube into 6mm diameter holes, put wire through 10mm diameter hole.



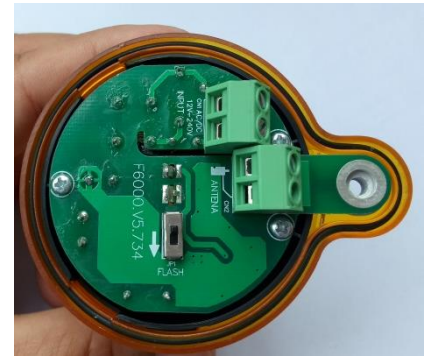
4. Put the power wire and antenna through the hole of bracket, fix the holder with TA4*30 screw on the wall



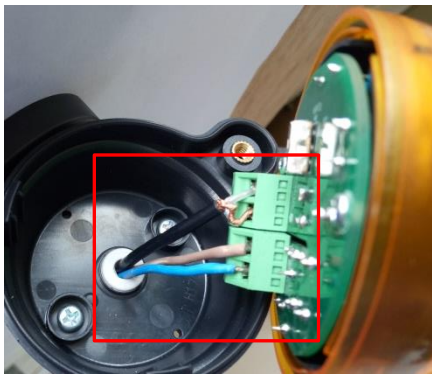
5. Put the power wire and antenna through the hole of holder, fix the holder on the bracket with PA4*10mm screws.



6. Make sure the Sealing ring installed correctly into the Groove on the holder.



7. Connect the power and antenna wires with terminals.



8. Install the case, and make sure the fastener fixed with the holder. Then screw up the antenna clockwise.



9. Fit the cover case on the holder without gap. And twist the antenna until it's getting tight



5.2 F6000 should be installed with bracket and perpendicular to the ground

User must install the lamp with bracket and make the lamp perpendicular to the ground

Make sure the lamp not install slantwise to avoid water gets inside the lamp

