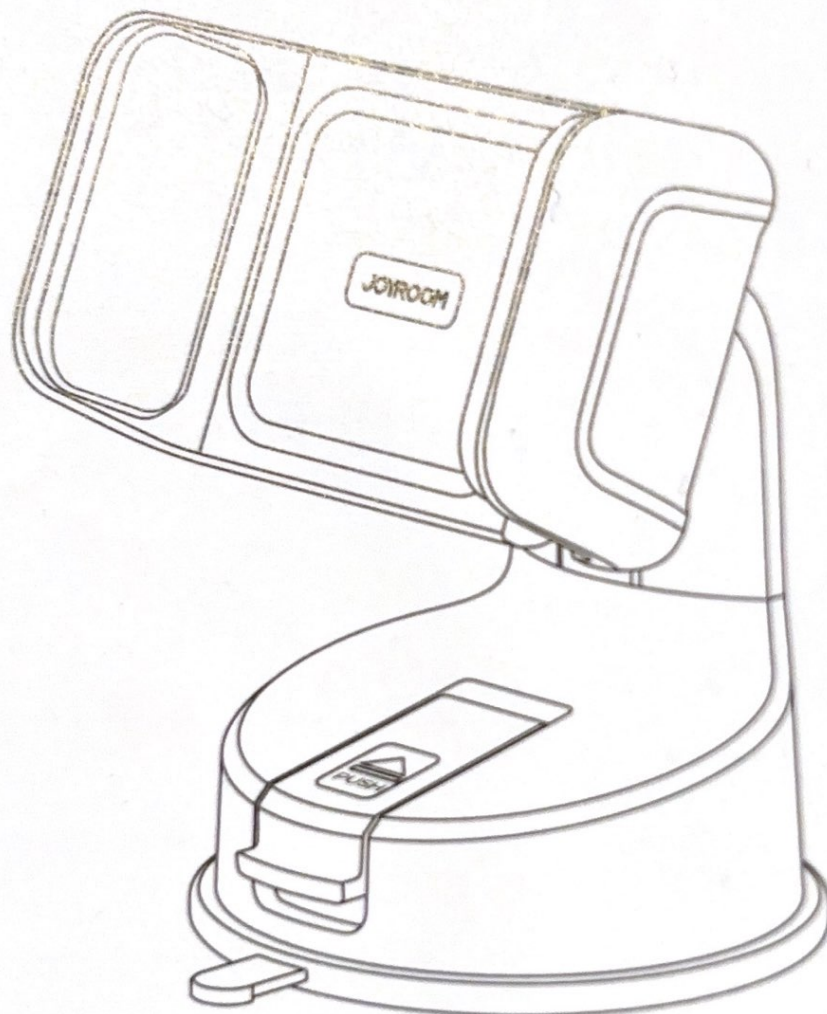
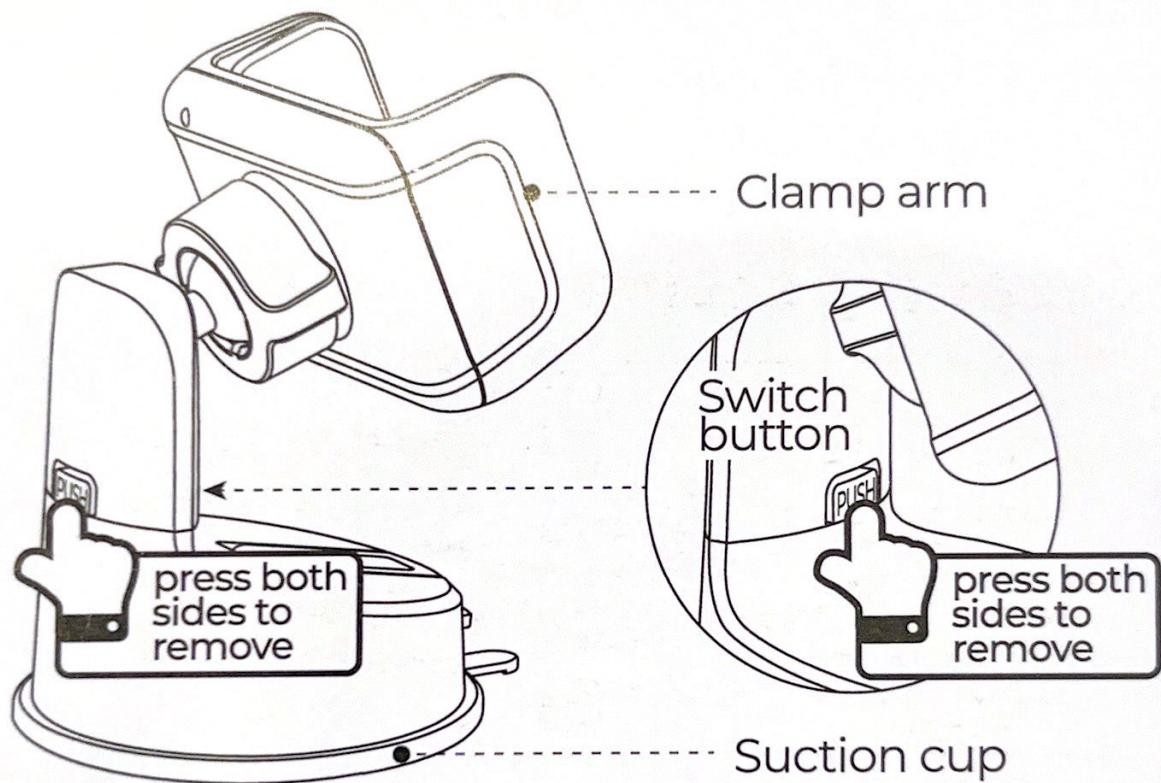

JOYROOM



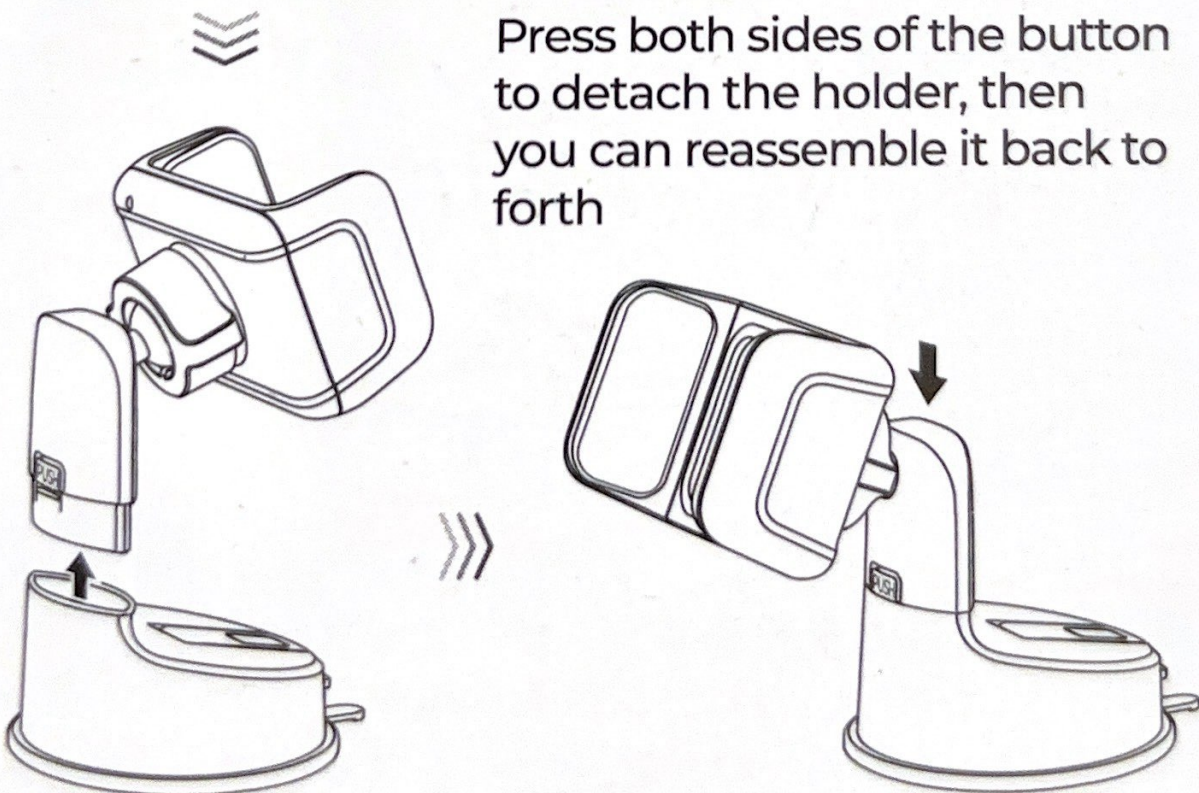
User Manual

JR-ZS284 Car Phone Holder

Product diagram



Press both sides of the button to detach the holder, then you can reassemble it back to forth



Parameter

Model: JR-ZS284

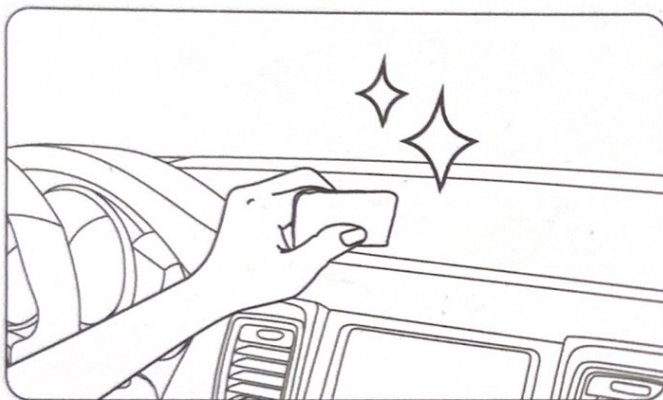
Material: PC

Name: Car Phone Holder

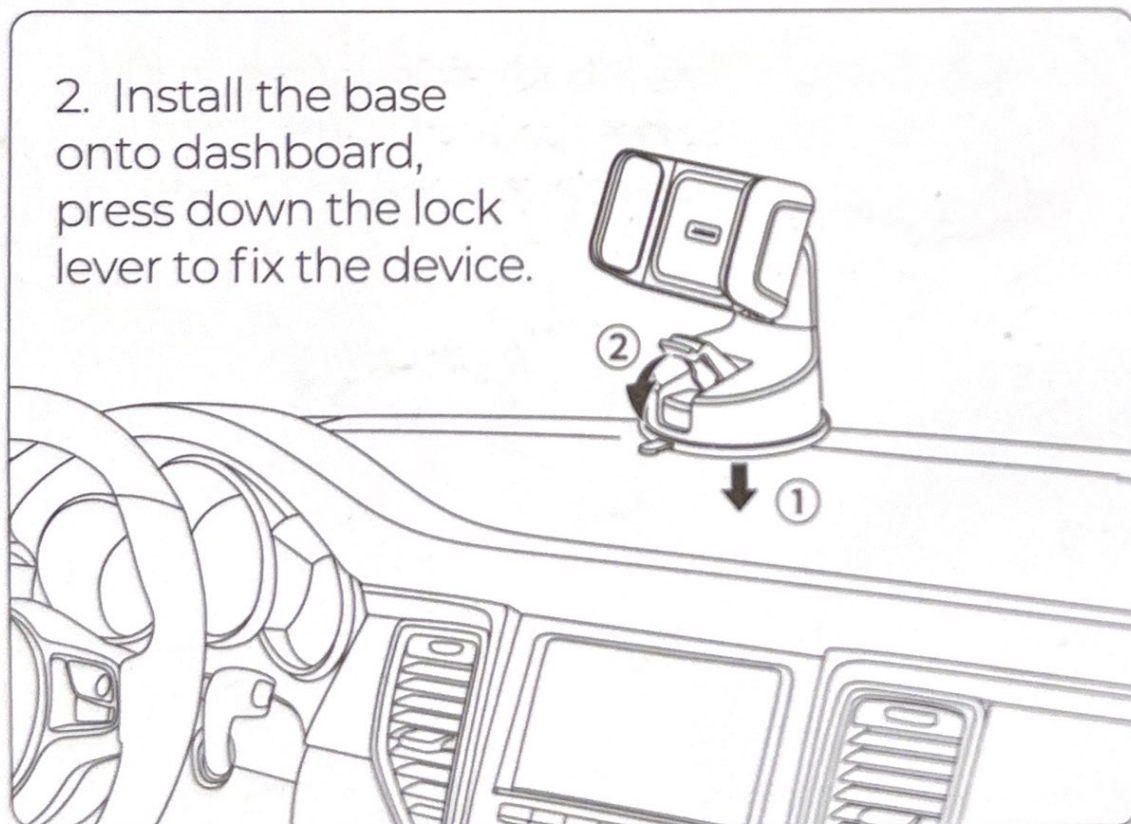
Size: $\phi 72 \times 94 \text{mm}$

Net weight: about 107g

Operating steps

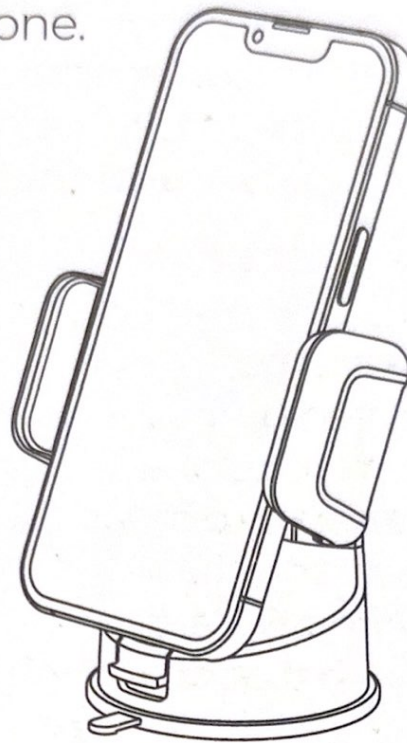


1. Clean the dashboard where you need to install the car mount with a wet cloth, and wait for it to dry;



2. Install the base onto dashboard, press down the lock lever to fix the device.

3. Place your phone.



After-sales service instructions

Dear users, thank you very much for using our products. In order to protect your rights and interests, and to clarify the company and its distributors' responsibilities, i.e. product maintenance, replacement and return, please read the following items carefully:

1. Warranty Card is the necessary certificate for our company to provide free after-sales service during the warranty period of our products.
2. According to the principle of "who sells who takes responsibility", you can, with the Warranty Card, contact the distributor in case of any quality problem. The company will provide service support for its distributors.
3. The company promises that if a quality problem occurs within seven days since the date of purchase (the date on valid bills shall prevail), the customer may choose to return, replace or maintain the product freely.