



V380 Pro Smart Camera

Product Manual V3.2

Read carefully before using the device and keep it for subsequent use

Download

Search for "V380 Pro" in the APP Store or scan the QR code below to download and install the V380 Pro APP.



Scan the QR code to download the V380 Pro APP

Electronic manual

Use the V380 Pro APP to scan the QR code on the camera to add the device and follow the instructions to view the electronic manual of the device.

Reset the camera

1. Press and hold the reset button for several seconds, the camera will prompt "Reset completed".

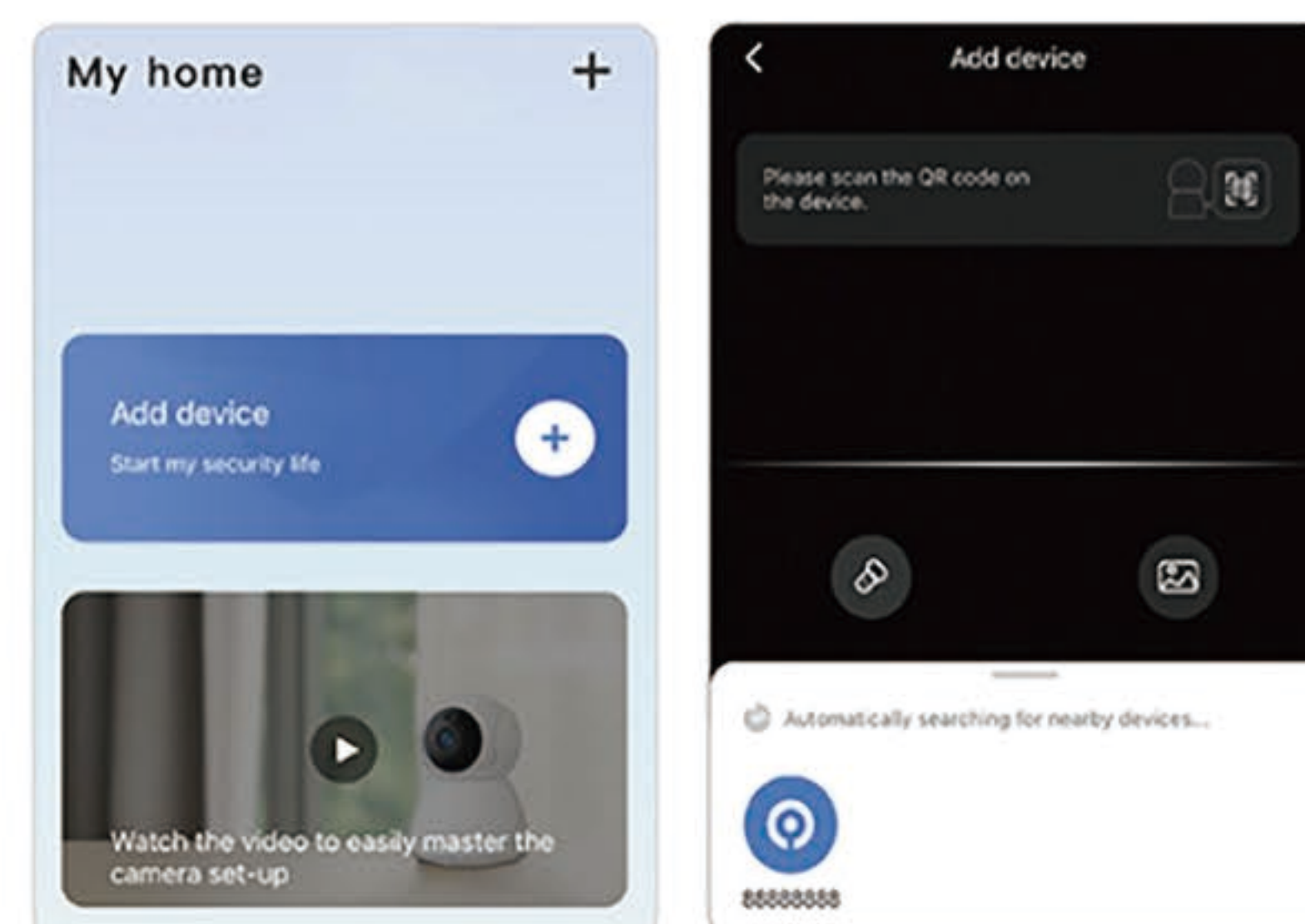
Reset button



Note: The position of the reset button and card slot is for reference only, depending on your device.

Add camera

1. Open APP to register your account and log in.
2. Click the "+" icon and scan the QR code on the device.

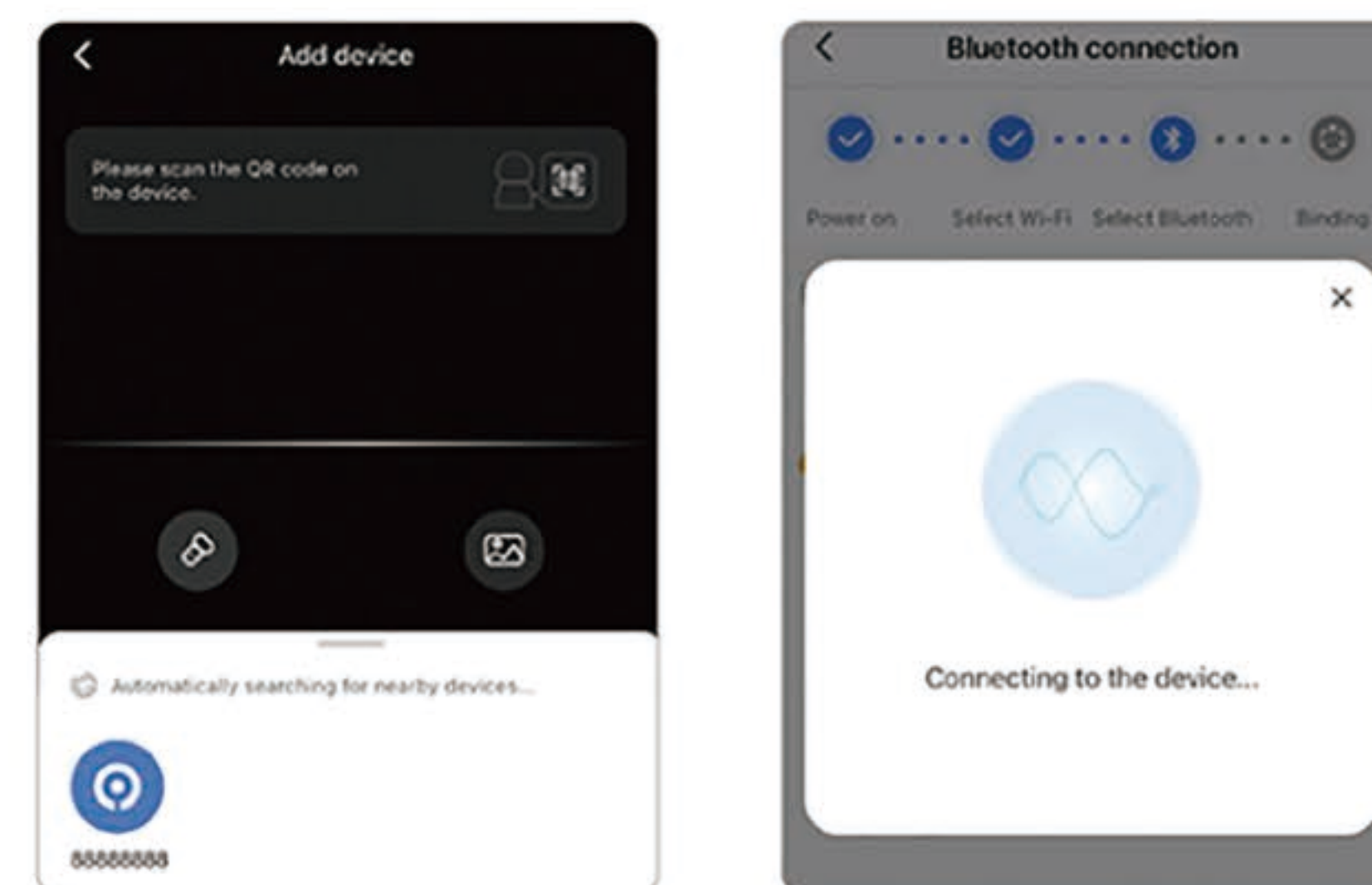


Note: Each APP version may be different, please follow the prompts in the latest version of APP to set up the camera.

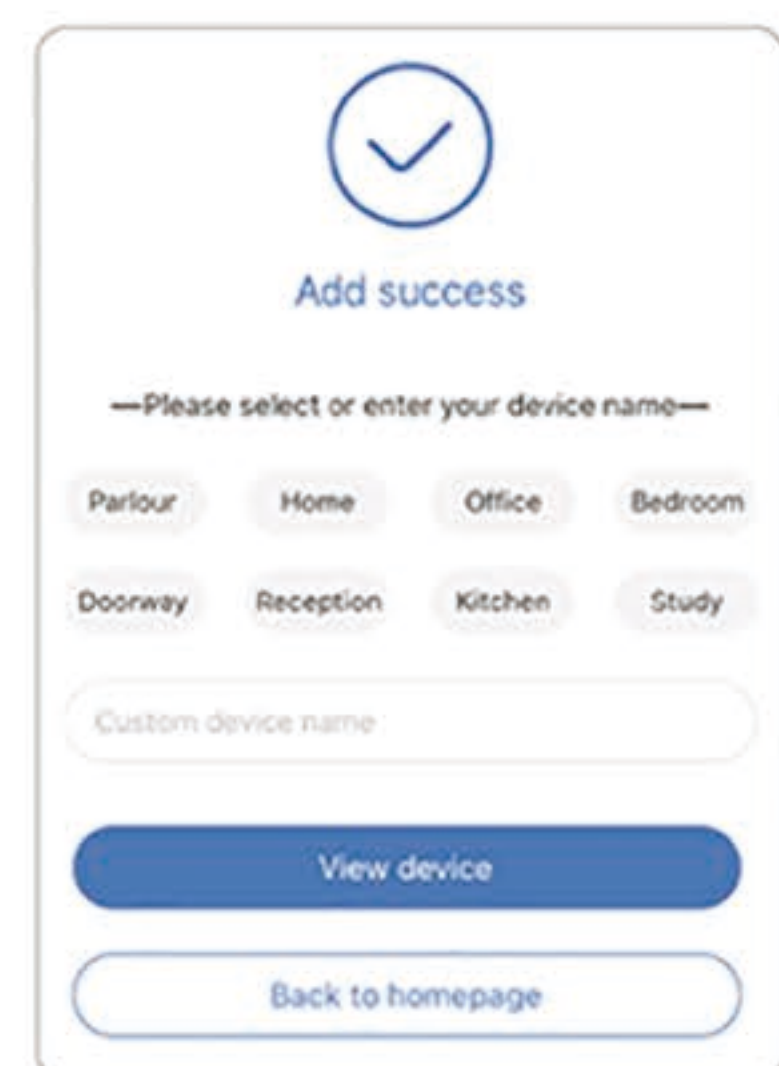
Bluetooth network connection

Note: Turn on your phone's Bluetooth before you add a camera

1. Connect your mobile phone to 2.4GHz Wi-Fi first.
2. Confirm the connected Wi-Fi and enter the password.

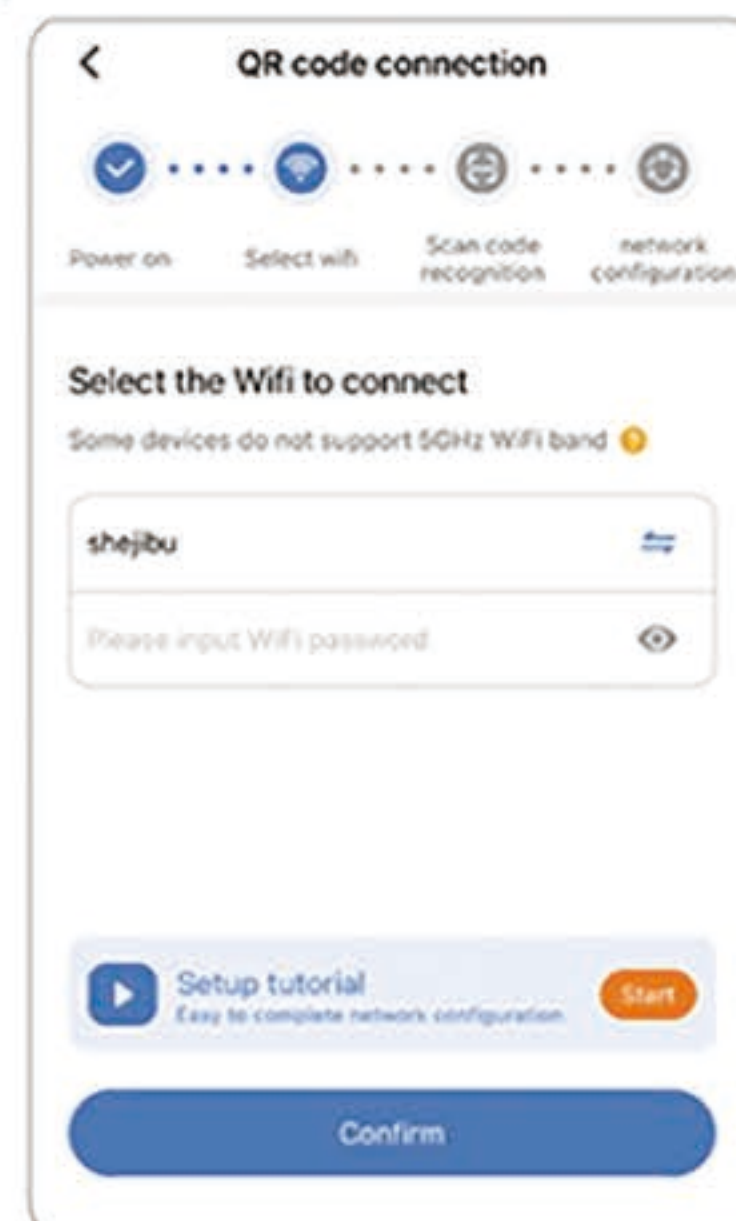


3. The device will prompt "Network configuration received, connecting". Please be patient when using the device for the first time.
4. After the device prompts "Network connected" - "Bind successfully, camera ready", it means that the device has connected to the network and is successfully added.



QR code network connection

1. Please select the Wi-Fi that the device needs to connect to, and enter the correct password.



Note: The device only supports 2.4GHz Wi-Fi. Please select Wi-Fi without "5G". The name of Wi-Fi should not contain special symbols.

2. The APP will generate the QR code and then use camera to scan this QR code.
3. After the device identifies the QR code successfully, it will prompt "Network configuration received, connecting". Please be patient when using the device for the first time.
4. After the device prompts "Network connected" - "Bind successfully, camera ready", it means that the device has connected to the network and is successfully added.



* Adding completed" is on page 13

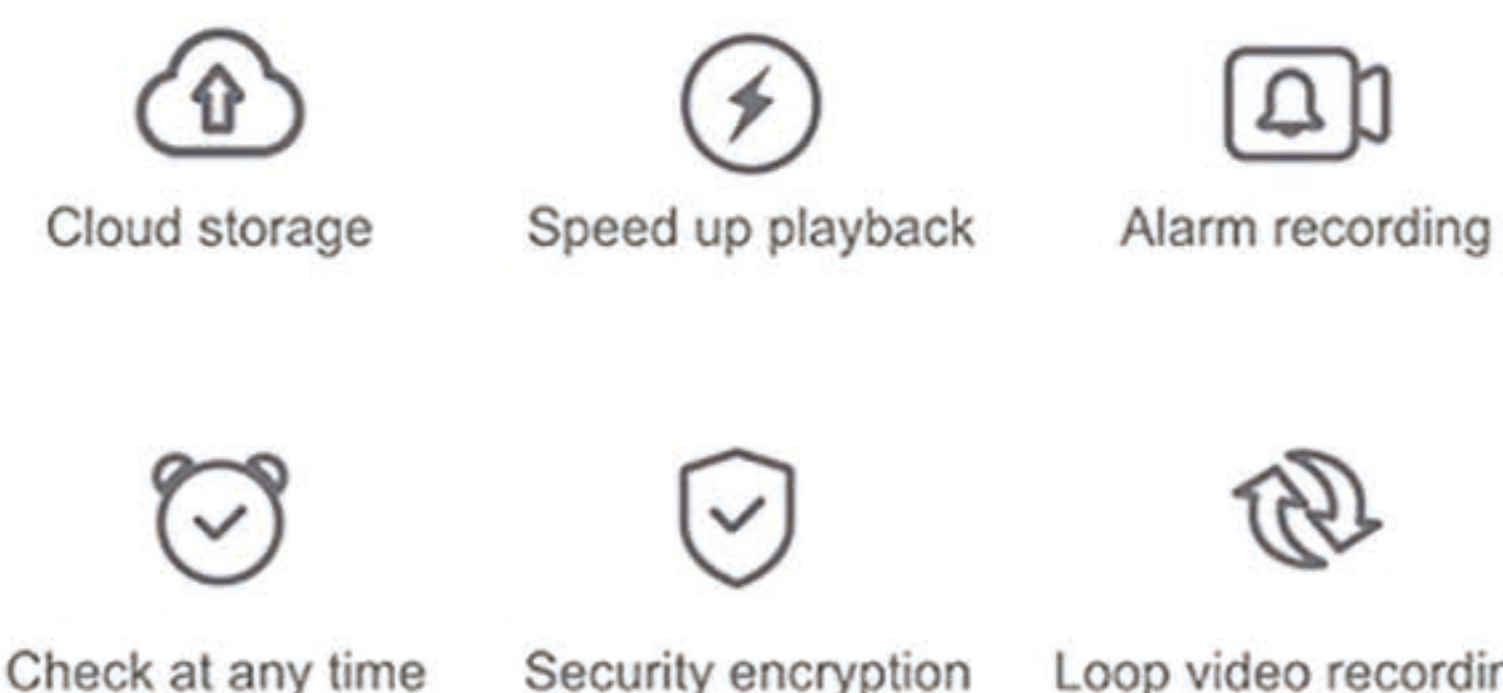
4. Enter the four-digit numbers prompted by the voice of the device in turn to add the device.
5. After the device prompts "Network connected" - "Bind successfully, camera ready", it means that the device has connected to the network and is successfully added.



Cloud service

You can enjoy these special functions after subscribing the cloud service on the [Cloud] interface of the V380 Pro APP.

Cloud service special functions



* Cloud service is a value-added service that requires payment.