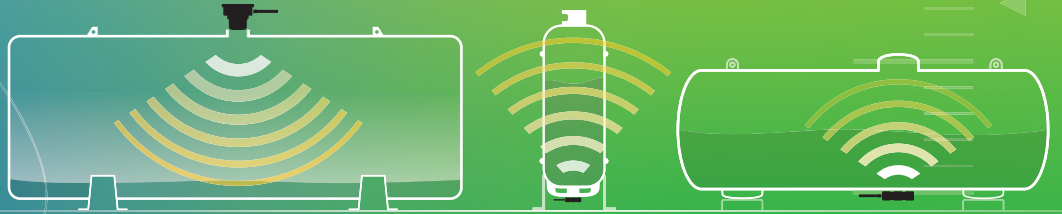




MOPEKA TD40 / TD200 & PRO200

ACCURACY ABOVE EVERYTHING

Learn more about how our sonar powered tank monitoring system can benefit your business.



Mopeka® is a global leader in Sonar Tank Monitoring. We understand that Accurate, Reliable and Realtime Tank Monitoring is Critical. We believe in Accuracy Above Everything.

Imagine your Propane, Butane, Oil, Anhydrous, Water or any other liquid based business having an advantage above all others. You'll get that advantage with Mopeka®'s patented range of Sonar Tank Monitoring solutions. We harness the power of Sonar, Cloud and Mobile technologies to ensure you can quickly, easily and above all ACCURATELY monitor the levels of all your pressurized and non-pressurized tanks in Realtime, Anytime.

We provide solutions for both Pressurized and Non-pressurized Tanks, ranging from residential 20lb grills and RV tanks, right through to industrial tanks greater than 90,000 gallons. With over 95 years combined experience working with leading edge technology, engineering, and bulk commodities, we bring the best and the smartest solutions to life that help you better manage existing volumes and streamline supply chain management.

We provide a wide array of services:

- Sales of sonar tank monitoring for a variety of liquid commodities for example: Propane, Oil, Butane, Anhydrous, Chemicals, Water, Beverages and more.
- A Suite of cloud-based software that allows you to manage and monitor tank levels from any internet connected device.
- Custom product design solutions that fit your needs and prices that are aggressively competitive.
- The latest in cloud-based software with our partner Amazon Web Services.
- White labeling our products is available.

Customer Service is our top priority. With Mopeka® you get an organization focused on helping you improve and reach your long-term business goals. Contact us to learn more about how we can assist your firm with your mobile and remote tank monitoring needs.

THE SOLUTIONS

Mopeka® offers a full line of sonar tank monitoring sensors for both Pressurized and Non-pressurized Tanks. Whether you are looking to monitor your levels of Propane, Oil, Butane, Anhydrous, Chemicals, Water or Beverages, we have the sensor for you.

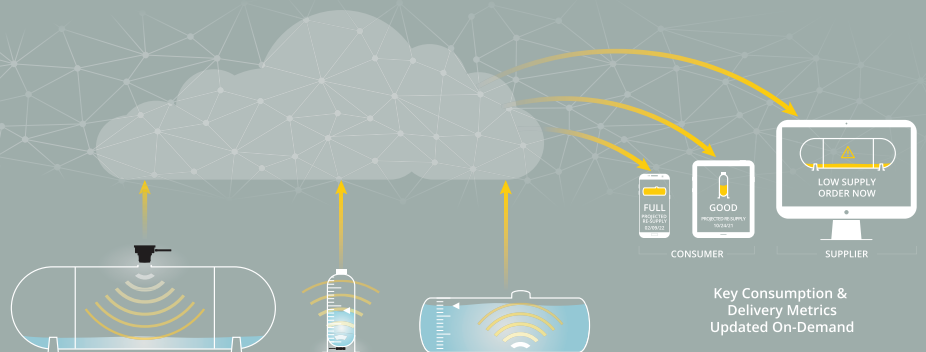
Features of the Mopeka Product Line:

- The sensors work on a global SIM chip that operates on the 4G LTE CAT-M1, NB-IoT networks and Boosted Bluetooth.
- The average sensor's battery life is 5 years*, so you don't need to worry about continually changing the battery and they're replaceable.

- The sensors are so simple to install, there is no need for a technician. You are up and running in minutes.
- Nothing is more accurate than sonar. Sonar is a time-tested technology provided in military applications as well as residential and commercial environments. The sensors are so accurate they can read down to a .01 of an inch.
- Class 1 Div 1- The sensors for Bulk and Residential Pressurized and Non-pressurized Tanks are Class 1 Div 1, which means that since we don't penetrate the tank like traditional sensors, we are safer to operate in any environment.

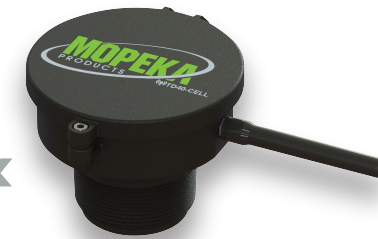
KEEP TRACK OF YOUR TANK LEVELS FROM ANYWHERE

With Mopeka® you can monitor your tanks levels from your smartphone, tablet or computer using the freely downloadable Co-Pilot App or via www.mopeka.cloud. Mopeka sensors work on 20lb cylinders to >90,000 gallon bulk storage tanks.



MOPEKA

TD40 / TD200 & PRO200



MOPEKA TD40 / TD200
NON-PRESSURIZED
TANK SENSOR



MOPEKA PRO200
NON-PRESSURIZED
TANK SENSOR

NON-PRESSURIZED TANK SENSORS			
	RESIDENTIAL/BULK/COMMERCIAL	RESIDENTIAL / COMMERCIAL	RECREATIONAL/RV/MARINE
SENSOR	TD40	TD200	PRO200
COMMODITY	Non Pressurized Liquids	Non Pressurized Liquids	Non Pressurized Liquids
MOUNTING LOCATION	Tank Top	Tank Top	Tank Top
UL, UCL, ATEX CERTIFICATIONS	Class 1, Division 1, Group D Class 1, Zone 1, Group IIA	Class 1, Division 1, Group D Class 1, Zone 1, Group IIA	Class 1, Division 1, Group D Class 1, Zone 1, Group IIA
TANK TYPE	Any	Any	Any
TANK ORIENTATION	Any	Any	Any
TANK SIZE	Depths from 4' to 20'	Depths up to 4'	Depths up to 48"
OPERATING TEMPERATURE RANGE	-50° TO 60°C -55° TO 140°F	-50° TO 60°C -55° TO 140°F	-50° TO 60°C -55° TO 140°F
DEFAULT COMMUNICATIONS	Global SIM 4G LTE CAT M1, NB-IoT, Boosted Bluetooth	Global SIM 4G LTE, CAT M1, NB-IoT, Boosted Bluetooth	Bluetooth or Bluetooth and Wired
BATTERY LIFE*	4-6 years, replaceable	4 - 6 Years replaceable	Hard-wired - 12V
BATTERY TYPE / HARD-WIRED	Energizer Lithium AA	Energizer Lithium AA	Hard-wired
WARRANTY	3yrs	3yrs	1yrs



WE SPEAK MANY LANGUAGES

In addition to a wide variety of sensors, we can also provide you with an equal variety of communications standards. Ask us about the communication options available to you or work with our engineers and consultants to help you figure out the best solution for your needs.



MOPEKA PRODUCTS, LLC

1223 Industrial Drive, Suite A
New Braunfels, TX 78130

OFFICE: 833.667.3521