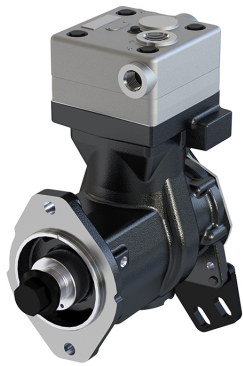


**Application:** CUMMINS 6 CTA A - 8,3 /VOLKSWAGEN 13 170 / 15 170 / 17 210 / 17 220

**654.01.1000**

**654.01.2000  
(WITH GEAR)**

OEM	OE
9111550610	3357112 2TO100759C

<b>Cylinder Bore</b>	Ø85
<b>Stroke</b>	56
<b>Swept Volume</b>	318
<b>Air Inlet Port Size</b>	3/4-14NPT
<b>Air Delivery Port Size</b>	3/4-14NPT
<b>Number of Cylinders</b>	1
<b>Through Drive</b>	YES
<b>Unloader Port Size</b>	-
<b>Water Or Air Cooled</b>	W
<b>Water Inlet Port Size</b>	1/2-14NPT
<b>Water Delivery Port Size</b>	1/2-14NPT
<b>Water Cooled Valve Plate</b>	YES

## Components

654.01.1100	Crankcase	OEM	OE

652.01.1200	Cylinder Head	OEM	OE
		9111558022	

652.01.1220	Cylinder Upper Head	OEM	OE
		9111556534 8845025414	

652.01.1230	Cylinder Lower Head	OEM	OE
		9111556502 9111558032	

143.01.1400	Connecting Rod	OEM	OE
		9111457372 9111457382 9111537302	3357396 0001312417 0001312517

617.01.1500	Crankshaft	OEM	OE

605.01.1510	Pump Adapter	OEM	OE

602.01.1502	Screw for Crankshaft	OEM	OE

617.01.1600	Bearing Cover	OEM	OE

617.01.1640	Cover Kit	OEM	OE

136.01.1700	Piston With Rings (STD)	OEM	OE
		9115016242 9115016252 912006272	1283781 1698686 0001303417 0001305317 81541196040
136.01.1700-Ø85.00 mm 136.01.1710-Ø85.25 mm 136.01.1720-Ø85.50 mm 136.01.1730-Ø85.75 mm 136.01.1740-Ø86.00 mm			

132.01.1800	Piston Ring Kit (STD)	OEM	OE
		9115019202 9118019202	3094621 0011311111
132.01.1800-Ø85.00 mm 132.01.1810-Ø85.25 mm 132.01.1820-Ø85.50 mm 132.01.1830-Ø85.75 mm 132.01.1840-Ø86.00 mm			

652.01.2300 Repair Kit With Bushing

		OEM	OE

652.01.2350 Repair Kit w/o Bushing

		OEM	OE

652.01.2330 Repair Kit

		OEM	OE

652.01.1280 Head Repair Kit

		OEM	OE

617.01.2100 Gasket & Sealing Kit

		OEM	OE
		9111559212	

652.01.2200 Valve Kit

		OEM	OE

617.01.3300 Pump Support

		OEM	OE

617.01.2900 Gear

		OEM	OE
			3902595

575.01.2600 Bushing

		OEM	OE
		9111552004	

136.01.1900 Cap

		OEM	OE
		8950735894	1304881 3094835 11712508 0001312321

136.01.2700 Screw Kit

		OEM	OE
		8912119994	

		OEM	OE

		OEM	OE

		OEM	OE

		OEM	OE

		OEM	OE

		OEM	OE

		OEM	OE