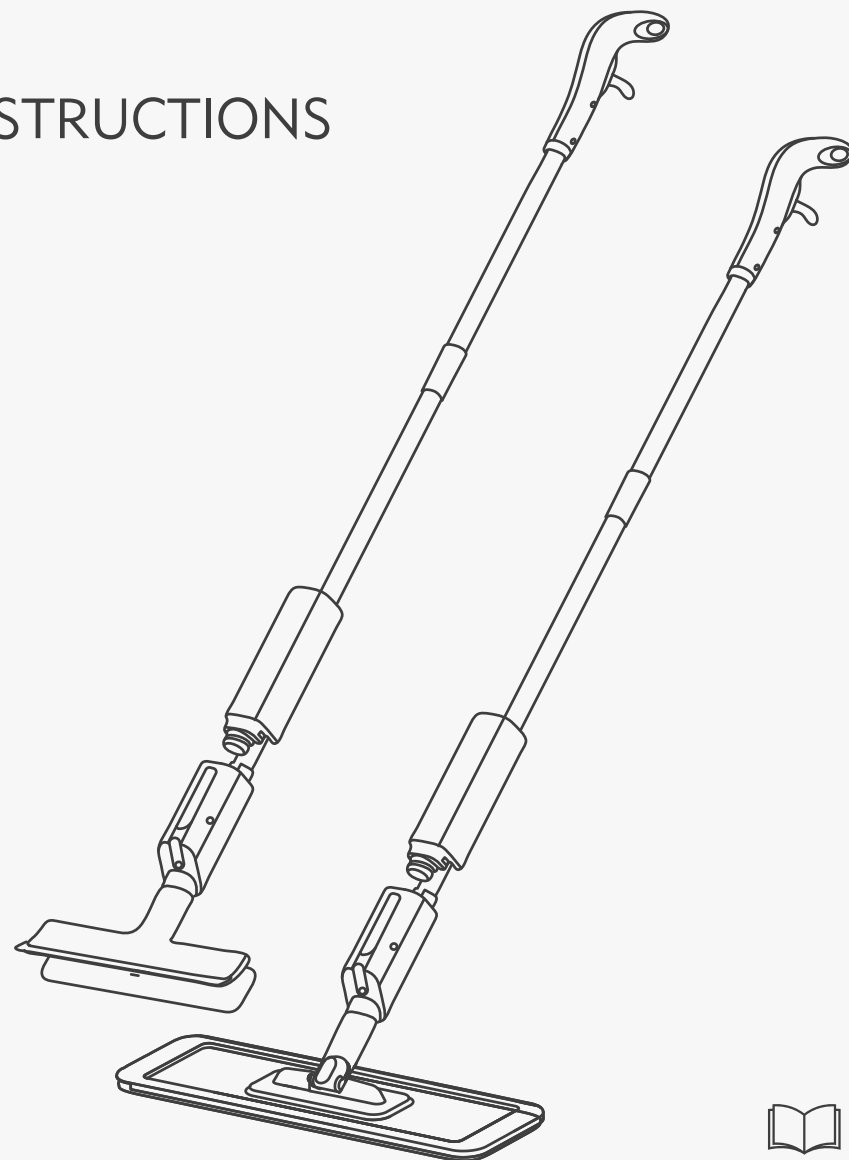


WINDOW CLEANER

WATER SPRAY

INSTRUCTIONS



MADE IN CHINA

PRODUCT DESIGN FEATURES

This product is suitable for cleaning the surface of glass and floor/tile. and cleaning the This product is suitable for cleaning the surface of glass and floor/tile. and cleaning the malls, offices, supermarkets, hospitals, schools, and business and enterta inment places)

Window cleaner + plate drag replacement head, multi-functional cleaning every corner.
No need to climb a single hand can operate, high- rise glass easy to scrub from now on.
Fine fiber cloth + high quality TPR scraper, wipe and scrape, enjoy the window bright and clean. Gently press the board, one key spray decontamination, easy t erase stubborn stains.
Detachable double drive design, long/short rod can be used with water spray, easy to deal with a variety of scenarios. 280ML large capacity water bottle, cleaning process without frequent water change.

PACKING INSTRUCTIONS	CEREIFICALE OF CONFORMITY (LABEL)
Packing instructions pole x1 set of 2section clean window ,head x1 pc clean floor head x1 pc bottle x1 pc Instructions x1 pc	Inspection personnel Job number 03 Production date/Day/Month/Year

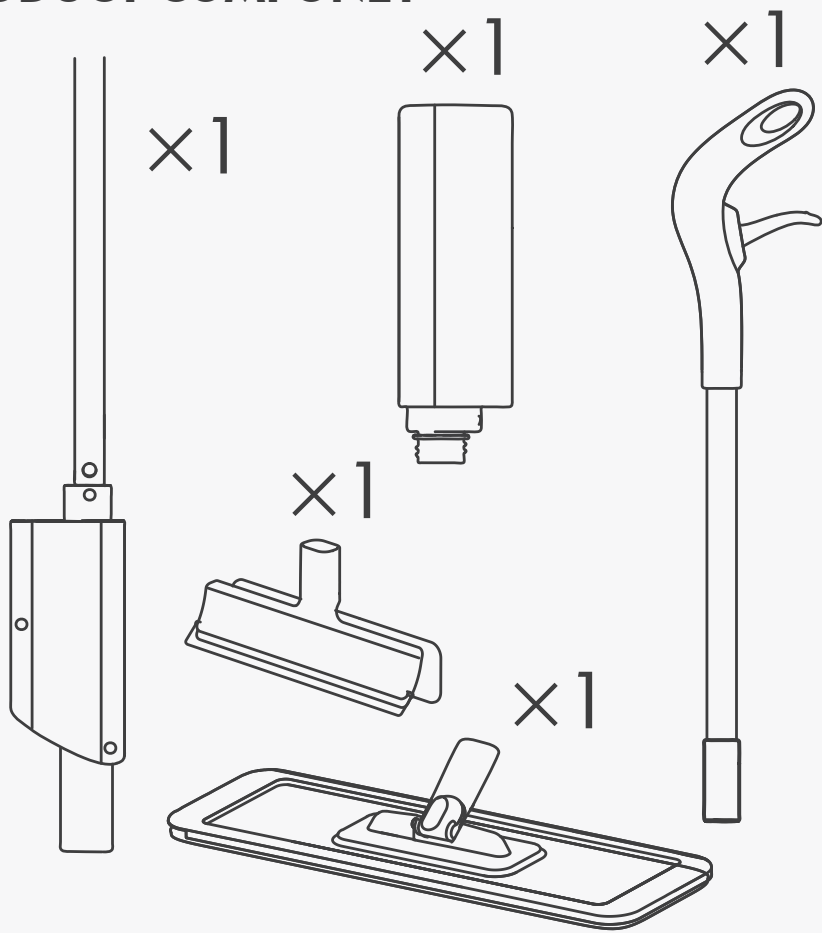
ATTENTION

- 1.Remove packaging, labels, etc., when first used. Please make sure there is no transport or man-made damage.
- 2.Do not put the product near fire or combustible material, which may cause deformation and damage of the product.
- 3.Do not fall to the ground.
- 4.This product can only be used on flat floor .
- 5.Self-repair, decomposition and transformation of the product is prohibited, and possible damage.
- 6.Do not place the product in direct sunlight.
7. This product is for home use only. Minors should be used under adult guidance.

PLEASE READ CAREFULLY BEFORE USING

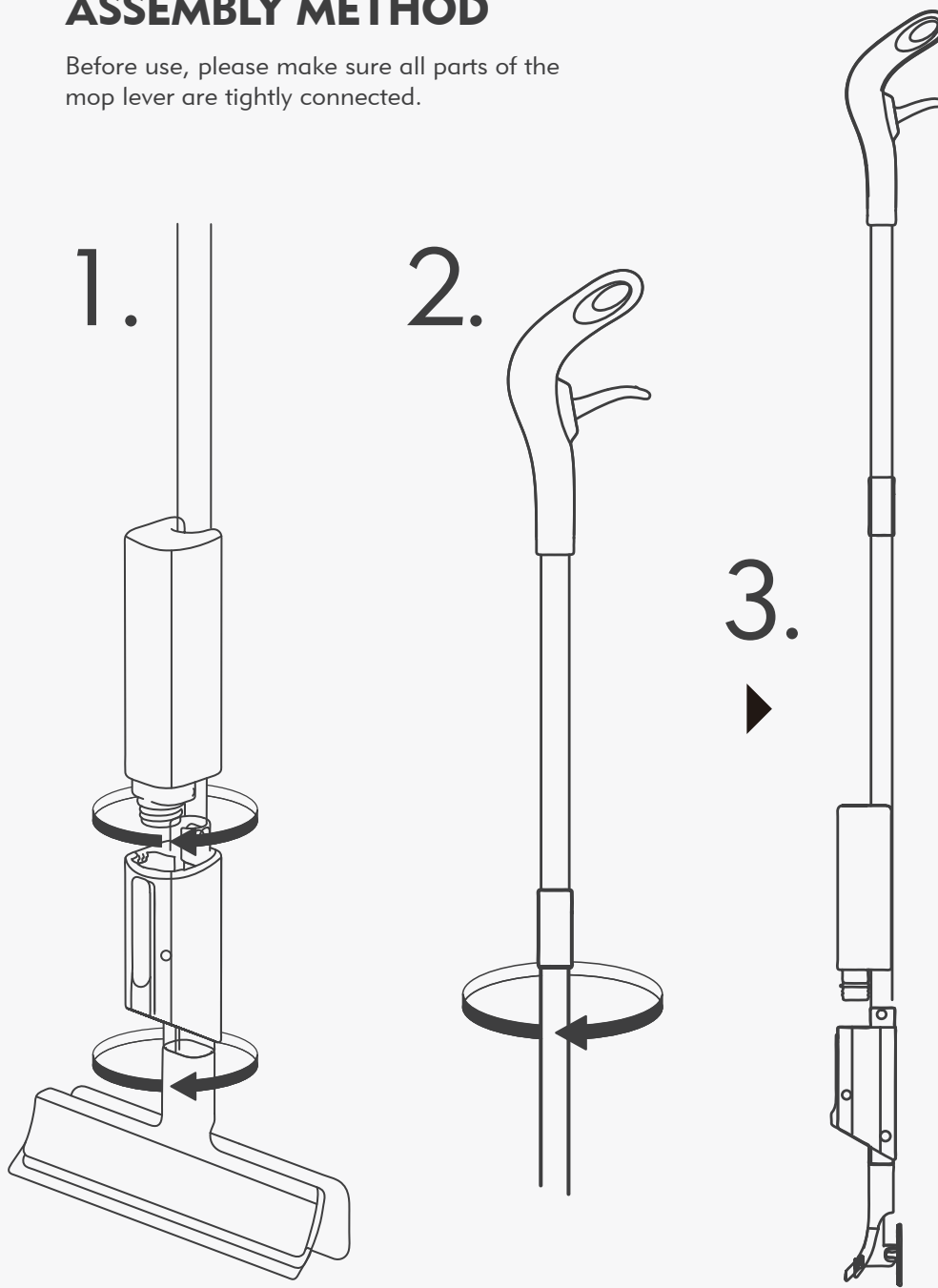
1. In order to help you better master the skills and pay attention to the matters needing attention, please take some time to read the instructions before using. Note should be observed in the instructions, so that the use of defects and losses are not covered by the merchant warranty.
2. Open the box and check whether the products and related accessories in the packing box are complete, and properly keep the instruction manual, warranty card and distributor purchase invoice.

PRODUCT COMPONET



ASSEMBLY METHOD

Before use, please make sure all parts of the mop lever are tightly connected.



ASSEMBLY METHOD

Mop spare head
Easy to clean. 360 swivel Thin drag board, easy to cope with the edges and corners of the seam.

