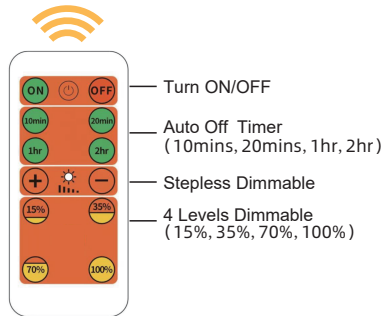


# INSTRUCTION

## Packing List

1X Lamp 1X Power Adapter 1X Support Plate  
 1X Tape 3X Expansion Screws  
 3X Steel Screws 1X Remote Control



### Code matching before first usage:

1. Remove the insulation sheet from remote control, then keep pressing OFF button and not release
2. Plug power adapter into power socket, wait for 5~10 seconds, the lamp will flash once. The code matching is successful.

### Remind:

If the code matching is failed, please don't worry, press the touch switch to turn on lamp and remove the power adapter from power socket. It can initialize the lamp, then begin new code matching process.

EN

## LED WALL LIGHT

SKU	LB-W001	Control Mode	Remote Control
Material	Plastic ABS, Aluminium	Dimension	50.4 X 6 X 3 CM
Lighting Source	COB LED	Input Voltage	AC100-240V 50/60HZ
USB Output	DC5V Max.2A	Power	Max.4W
Lighting Brightness	Max.240Lm	Lighting Color	4000K
CRI	CRI>80	Waterproof Rate	IP20

ES

## LUZ DE PARED LED

SKU	LB-W001	Modo de control	Mando a distancia
Material	Plástico ABS,Aluminio	Dimensión	50.4 X 6 X 3 CM
Fuente de luz	LED COB	Tensión de entrada	AC100-240V 50/60HZ
Salida USB	DC5V Max.2A	Potencia	Max.4W
Brillo de la iluminación	Máx.240Lm	Iluminación Color	4000K
CRI	CRI>80	Índice de impermeabilidad	IP20

DE

## LED-WANDLEUCHTE

SKU	LB-W001	Kontrollmodus	Fernsteuerung
Material	ABS-Kunststoff, Aluminium	Dimension	50.4 X 6 X 3 CM
Lichtquelle	COB-LED	Eingangsspannung	AC100-240V 50/60HZ
USB-Ausgang	DC5V Max.2A	Strom	Max.4W
Helligkeit der Beleuchtung	Max.240Lm	Beleuchtung Farbe	4000K
CRI	CRI>80	Index der Wasserdichtigkeit	IP20

IT

## LUCE A PARETE A LED

SKU	LB-W001	Modalità di controllo	Telecomando
Material	Plastica ABS, alluminio	Dimensione	50.4 X 6 X 3 CM
Sorgente luminosa	LED COB	Tensione d'ingresso	AC100-240V 50/60HZ
Uscita USB	DC5V Max.2A	Potenza	Max.4W
Luminosità dell'illuminazione	Max.240Lm	Colore dell'illuminazione	4000K
CRI	CRI>80	Indice di impermeabilità	IP20

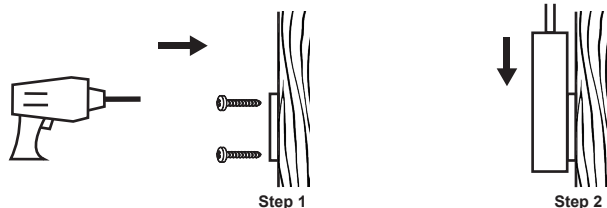
FR

## APPLIQUE LED

SKU	LB-W001	Modes de contrôle	Télécommande
Matériau	Plastique ABS, aluminium	Taille	50,4 X 6 X 3 CM
Source lumineuse	LED COB	Tension d'entrée	AC100-240V 50/60HZ
Sortie USB	DC5V Max.2A	Puissance	Max.4W
Luminosité de l'éclairage	Max.240Lm	Couleur de l'éclairage	4000K
CRI	CRI>80	Indice de résistance à l'eau	IP20

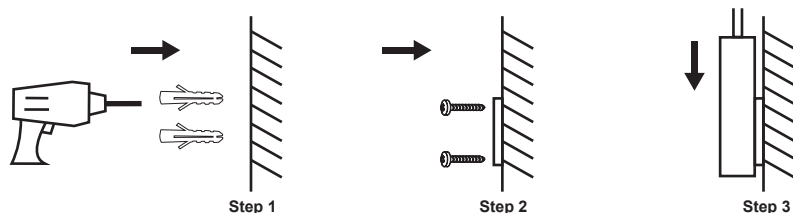
## Installation Methods

### Installation method 1 Wooden Wall



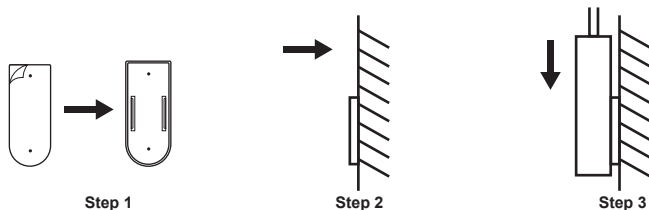
Fix the support plate on the wooden surface with steel screws, and then slide the lamp base onto the support plate.

### Installation method 2 Non-wooden Wall



Drill 2 holes  $\varnothing 5\text{mm}$  in the wall, insert the expansion screws into the wall, then fix the support plate on the wall with the steel screws, and then slide the lamp base onto the support plate.

### Installation method 3 Any Type of Flat Wall



Use tape to stick the support plate on the required surface, and then slide the lamp base onto the support plate.

Imported By:  
Ningbo Jiangbei Xinmu Dianzi Keji Youxian Gongsi  
Zhejiang Sheng Ningbo Shi Jiangbei Qu Jiangbei  
Da Dao 99 Hao 61 Zhuang 5-41 Shi,  
Ningbo, 315000, China

Manufactured By:  
Ningbo Jiangbei Realshine Electronics Co., Ltd  
4F, #1 Building, No.6 Hongxing Rd, Ningbo, China

**UKCAREP** KOVA ASSOCIATES LTD  
72a Kingston Road, Portsmouth,  
Hampshire, PO2 7PA, United Kingdom  
KOVA.Compliance@outlook.com

**ECREP** Like Sun GmbH  
Planckstr.59 45147 Essen  
ec-connection@web.de

# Enuotek®

✉ [service@enuotek.com](mailto:service@enuotek.com)

🌐 [www.enuotek.com](http://www.enuotek.com)

Made in China

