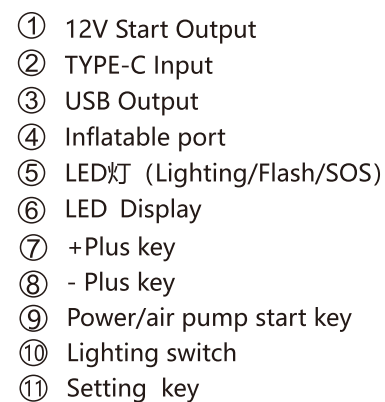


# BLOW

## User Manual



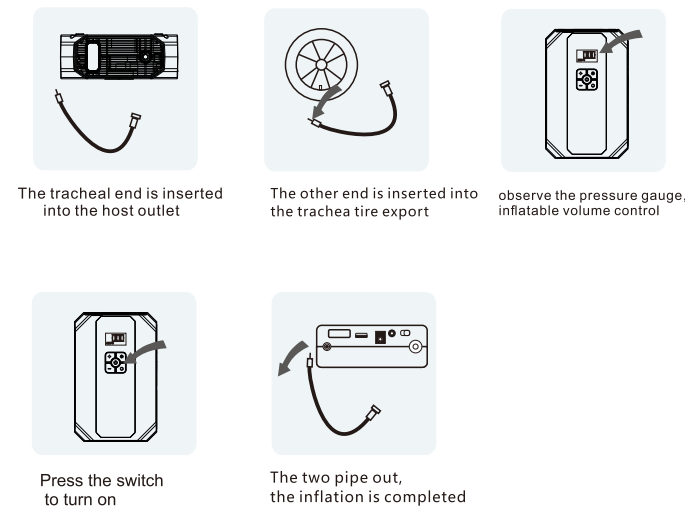
- Efficient Booster / Jump Starter with a capacity of 16000mAh 3.7V (59.2Wh)
- Support for starting vehicles with installation: 12V
- Starting current 300A
- Maximum current 600A
- Compatibility: Petrol engines 12V up to 4.0 l, Diesel 12V up to 3 l
- USB-C input: 5V/2A
- USB output: 5V, 2A
- EC5 output power supply: Voltage 12V,
- Charging Time: 4~5 hours
- 9.Air pump: 0~150PSI 6kgf/cm<sup>2</sup> (Max)
- Built-in LED flashlight: YES, Light, burst flashing, SOS
- Dimensions: 210×134×51.8mm
- Operating temperature -20°C to +60°C


The diagram illustrates the four steps for starting a vehicle using a jump starter:

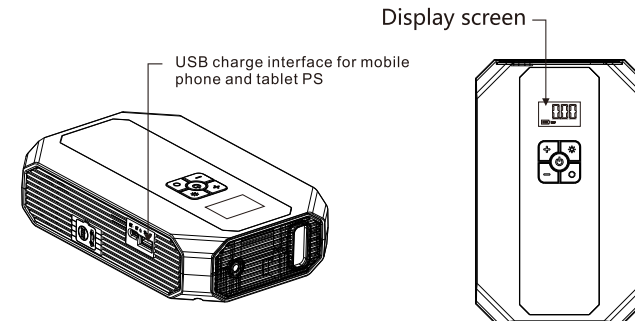
- The plug connect the jump starter**: A jump starter is shown being plugged into the vehicle's battery.
- Red clamp connect<sup>+</sup> Black clamp connect<sup>-</sup>**: The red clamp is connected to the positive (+) terminal and the black clamp to the negative (-) terminal of the battery.
- Start the vehicle**: The vehicle is started by turning the key to the 'START' position.
- Remove the clamps from the battery**: The clamps are removed from the battery after the vehicle is started.

1. Confirm that the host power indicator light must be greater than 75% or more to start the car more smoothly, and insert the blue plug of the battery clip into the car start port of the host..
2. Clip the red clip to the positive side of the battery and the black clip to the negative of the battery.
3. Try to start the car, each time the control starts within 5 seconds, remember not to screw the key and do not put it on for a long time to start, each time after starting needs to be more than 30 seconds apart, if the start 3 times can not start, please stop the start immediately, check whether the emergency power supply is sufficient or other problems in the car.
4. After the car starts, remove the starting power clip from the car battery within 30 seconds, otherwise the emergency starting power supply may be damaged.

► **Manual:** Access to the air pump end pipe → Start air pump → Access to the tire end of the trachea → Full stop



▶ Turn the main power switch to ON, Tap  ,  
You can charge your phone's tablet



1. During use or charging, if the device is slightly hot, it is normal, not a failure.
2. When using this product, keep the surrounding ventilation good, do not block the heat dissipation holes, and do not use in the following environments:
  - 1) ☐ Wet places and places that are easily splashed by water.
  - 2) ☐ Easy to drop place
  - 3) ☐ Places where vibration, corrosion, dust, chemical gases are harmful
  - 4) ☐ A place where flammable and explosive materials are stored
  - 5) ☐ Place with high temperature heat source nearby
3. When not in use, remove all external devices to reduce power loss.
4. When not in use for a long time, it is recommended to keep the battery charged at a certain level and charge this product at least once every three months.
5. Do not scrub with coarse chemicals such as soap or other cleaning agents containing strong alkalis and strong acids.
6. Non-professionals please do not disassemble the machine, so as not to damage the machine and cause safety hazards.
7. Please do not throw or burn battery products that cannot be used, and please take care of the environment.
8. The power indicator on the product is for reference only, does not guarantee complete accuracy, if there is a slight error, it is a normal phenomenon.
9. All patterns used in this manual are for reference only, please refer to the actual product.

Elements and chemical compounds contained in the device may have a negative impact on the environment and human health. Waste electrical and electronic equipment marked with the crossed-out wheeled garbage can symbol may not be placed in municipal waste garbage cans. Such equipment is subject to collection and recycling. Responsibilities under the Law on Waste Electrical and Electronic Equipment have been assumed by the Recovery Organization on behalf of the entrepreneur, in accordance with the relevant agreement.



Produced in P.R.C. for Prolech Sp. z o.o.  
Stary Puznów 58B, 08-400 Garwolin Poland  
[www.blow.pl](http://www.blow.pl)

1. Wyjście startowe 12 V
2. Wejście TYPE-C
3. Wyjście USB
4. Nadmuchiwany port
5. LED (oświetlenie/lampa błyskowa/SOS)
6. Wyświetlacz LED
7. +klawisz Plus
8. -klawisz Plus
9. Klucz do uruchamiania pompy powietrza/zasilania
10. Przełącznik oświetlenia
11. Klucz do ustawiania

Wydajny Booster / Jump Starter o pojemności 16000 mAh  
3.7V (59,2Wh)

- Obsługa rozruchu pojazdów z instalacją: 12 V
- Prąd rozruchowy 300 A
- Maksymalny prąd 600 A
- Zgodność: Silniki benzynowe 12 V do 4,0 l, Diesel 12 V do 3 l
- Wejście USB-C: 5 V/2 A
- Wyjście USB: 5 V, 2 A
- Zasilanie wyjściowe EC5: Napięcie 12V,
- Czas ładowania: 4~5 godzin
- Pompa powietrza: 0~150 PSI 6 kgf/cm<sup>2</sup> (maks.)
- Wbudowana latarka LED: TAK, Światło, błyskanie, SOS
- Wymiary: 210 × 134 × 51,8 mm
- Temperatura pracy -20°C do +60°C

1. Upewnij się, że kontrolka zasilania hosta musi być większa niż 75% lub więcej, aby uruchomić samochód płynnie, i włóż niebieską wtyczkę zacisku akumulatora do portu rozruchowego samochodu hosta.
2. Przypnij czerwony zacisk do dodatniej strony akumulatora, a czarny zacisk do ujemnej strony akumulatora.
3. Spróbuj uruchomić samochód, za każdym razem, gdy sterowanie uruchomi się w ciągu 5 sekund, pamiętaj, aby nie przekręcać kluczyka i nie zakładać go na długo, aby uruchomić, za każdym razem po uruchomieniu musi być więcej niż 30 sekund odstępu, jeśli uruchomienie 3 razy nie może się uruchomić, natychmiast przerwij rozruch, sprawdź, czy zasilanie awaryjne jest wystarczające lub czy w samochodzie nie ma innych problemów.
4. Po uruchomieniu samochodu odłącz zacisk zasilania rozruchowego od akumulatora samochodu w ciągu 30 sekund, w przeciwnym razie awaryjne zasilanie rozruchowe może zostać uszkodzone.

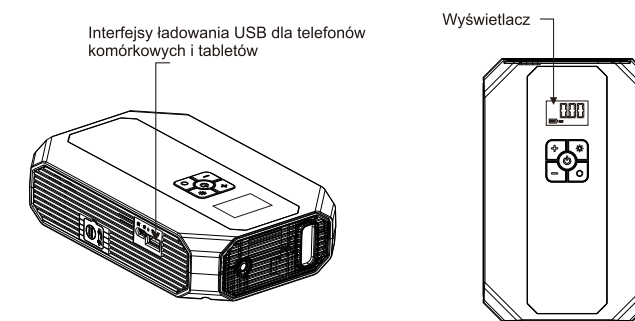
Podłącz przewód do pompowania do urządzenia

drugi koniec przewodu załóż na wentylek koła

obserwuj ciśnienie wyświetlane na wyświetlaczu

Odłącz przewód pompowania od koła i urządzenia

▶ włącz główny wyłącznik zasilania, d  
Możesz ładować telefon lub tablet



1. Podczas użytkowania lub ładowania, jeśli urządzenie jest lekko gorące, jest to normalne, a nie awaria.
2. Podczas korzystania z tego produktu, utrzymuj dobrą wentylację otoczenia, nie blokuj otworów odprowadzających ciepło i nie używaj w następujących środowiskach:
  - 1) Miejsca wilgotne i wodne, które są łatwo zaciągane wodą.
  - 2) Miejsca, w których łatwo ugnieść urządzenie.
  - 3) Miejsca, w których wibruje, kłótnie, kurz, gazy chemiczne są szkodliwe
  - 4) Miejsce, w których przechowywane są materiały łatwopalne i wybuchowe
  - 5) Miejsce z pobliżem źródła ciepła o wysokiej temperaturze
3. Gdy nie jest używane, odłącz wszystkie urządzenia zewnętrzne, aby zmniejszyć zużycie mocy.
4. Gdy nie jest używane, odłącz wszystkie urządzenia z zasilaniem, zwłaszcza jeśli używasz akumulatora naładowanego na określony sposób i ładowanie tego produktu przynajmniej raz na trzy miesiące.
5. Nie szoruj grubymi środkami chemicznymi, takimi jak mydło lub inne środki czyszczące zawierające silne zasady i silne kwasy.
6. Osoby nieprofesjonalne nie powinny odfekowatować urządzenia, aby nie uszkodzić urządzenia i nie stwarzać zagrożenia dla bezpieczeństwa.
7. Nie wyrzucaj ani nie spalaj baterii, których nie można używać, dbaj o środowisko.
8. Wskaznik zasilania na produkcie jest tylko punktem odniesienia, nie gwarantuje całkowitego rozładowania jeśli wystąpi niewielki błąd, jest to normalne zjawisko.
9. Wszystkie wzory użyte w tej instrukcji są tylko punktem odniesienia, zapoznaj się z rzeczywistym produktem.

Pierwiastki oraz związki chemiczne zawarte w urządzeniu mogą mieć negatywny wpływ na środowisko naturalne i zdrowie ludzkie. Zużyty sprzęt elektryczny oraz elektroniczny oznaczony symbolem przekreślonego kosza nie może być umieszczany w pojemnikach na odpady komunalne. Tak sprzęt podlega zbiórce i recyklingowi. Obowiązki wynikające z ustawy o zużycym sprzęcie elektrycznym i elektronicznym w imieniu przedsiębiorcy, zgodnie z odpowiedzialnością uprzednią, przejęła Organizacja Odzysku.

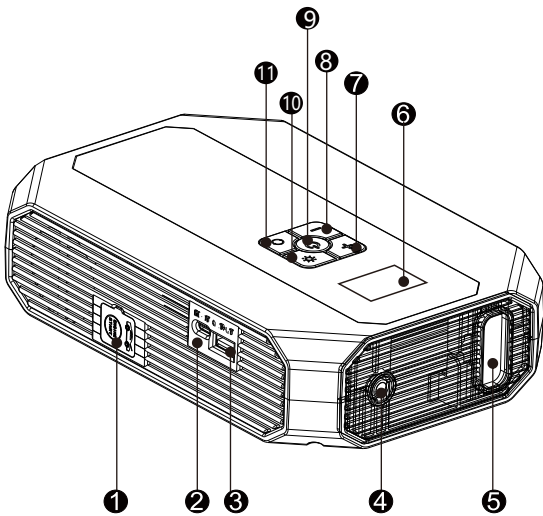


Wyprodukowano w Ch.R.L. dla Prolech Sp. z o.o.  
Stary Puznów 58B, 08-400 Garwolin.Polska  
[www.blow.pl](http://www.blow.pl)



TM16E-英文说明书-中性版-size 120\*175mm

PRODUCT FUNCTIONS DESCRIPTION



1

2

3

4

5

12V Start Output

TYPE-C Input

USB Output

Inflatable port

LED灯 (Lighting/Flash/SOS)

LED Display

+Plus key

- Plus key

Power/air pump start key

Lighting switch

Setting key

TECHNICAL SPECIFICATIONS

Product Model: TM16E

Product Size: 210\*134\*51.8mm

Output Jump Starter: 12V

USB Output: 5V/2A

Input: 5V/2A

Cycle Life: ≥300times

Operating Temp: -20-40°C

Gauge Scale: PSI and kg/cm²

Pump Time: 40psi

CONTENTS

Jump starter X1

Packing box X1

connection line X1

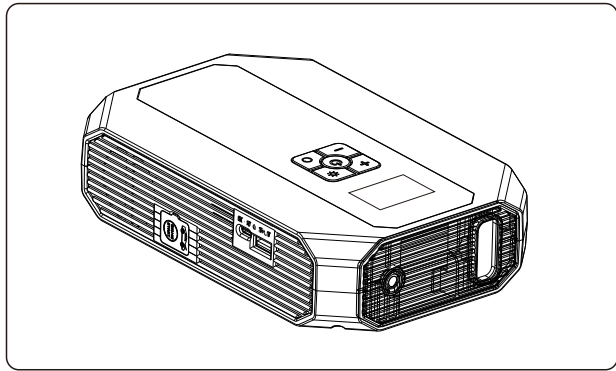
Juper cable X1

User manual X1

Inflatable tube X1

Details are subject to delivery

ACCESSORY CABLES



Jump starter X1

OR

connection line X1

12V OUTDOOR ENERGY STORAGE POWER SUPPLY

User manual X1

Juper cable X1

Inflatable tube X1

Packing box X1

OPERATING INSTRUCTIONS

The plug connect the jump starter

Red clamp connect "+"  
Black clamp connect "-"

Start the vehicle

Remove the clamps from the battery

STARTING A CAR WITH THE JUMP STARTER

1.Connect the Jumper Cables to the Jump Starter by plugging the connector into the Jump Starter Socket. Make sure the blue plug is FIRMLY inserted into the jump starter.

2.Connect the RED Battery Clamp to the Positive(+) battery terminal and connect the BLACK Battery Clamp to the Negative(-) battery terminal. Make sure the battery clamps make good clean contact with the battery terminals.

3.Slide the Jump Starter ON/OFF switch to the ON position.

4.Start the car.

5.Once the car has started, remove the jumper cables from the battery WITHIN 30 seconds (failure to do so may damage the jump starter) and leave the engine running.

OPERATING INSTRUCTIONS

Manual: Access to the air pump end pipe → Start air pump → Access to the tire end of the trachea → Full stop

The tracheal end is inserted into the host outlet

The other end is inserted into the trachea tire export

observe the pressure gauge, inflatable volume control

Press the switch to turn on

The two pipe out, the inflation is completed

It takes about 3-4 hours to charge the startup power supply.

Turn the main power switch to ON, Tap ,

You can charge your phone's tablet

Display screen

USB charge interface for mobile phone and tablet PS

Frequently Asked Questions

Problem1:After a few seconds of successful start-up, it automatically turns off or after removing the clip This situation is generally due to the excessive use of the car battery or serious aging caused, you can try to start again after running for 3 minutes to charge the battery, if this is still the case, it means that the battery has no power storage capacity, you must replace the new battery.

Problem2:Charging is not charged.

1. Check whether the display shows "IN", then "%" flashes, if neither is displayed, please check whether the charger connection is normal.

2. Please check whether the charging cable is correctly connected to the charger and whether there is power on the mains socket; You can try replacing a charger or charging cable and try again (this power supply You can use the phone's charger and cable directly).

Problem3:You can't charge your phone

Check that the USB output of the boot power supply is turned on, and the power is at least one block or more than 10%.

Check that the charging cable is properly connected or damaged, and if necessary, please replace the charging cable and try again

Problem4: Can't start the car

The engine is completely in motion at start-up, first check whether the clips are reliably connected, if the battery cable head is dirty or badly rusted, please clean it up and try again. If it is determined that it has been connected, it is possible that the car has entered a protected state, and some models can try to press and hold the start button directly for about 10 seconds, waiting until the engine is moving. The engine moves at start-up, but it does not start: please check whether the clip is reliably connected to the copper head of the battery line, if the negative electrode is attached to the iron shell of the car, it will affect the starting performance.

The above answer if not solve the problem. Please contact customer service to analyze and solve, do not disassemble the machine!

Certificate

Examine: \_\_\_\_\_

Date: \_\_\_\_\_

QC01 PASS

Warranty card

This product provides customers with a warranty service of 12 months from the date of purchase

Guarantee conditions: When you need warranty service, please present this warranty card and fill in the relevant content in detail. The Company provides

Warranty Coverage:

1. Product quality problems occur in the normal state of use.

2. If the damage to the product is caused by the operation error, it is not covered by the warranty.

3. After disassembling the machine, no warranty will be granted.

4. Confirm that this tamper evident label is complete, if the word (VOID) appears, it means that it has been opened and no warranty will be granted.

Products that are not covered by warranty, our company can provide maintenance services, and the maintenance costs need to be borne by the

Product model		Factory number	
Date of purchase		Repair date	
Customer name		Contact number	
Customer address			
Sales units			
Description of product anomalies			

WARNINGS

This machine is only suitable for general car tires, and can not be used for large and heavy cars.Vehicle tires, such as trucks, trucks, container trucks, etc.

Inflatable period or end, the outlet will produce high temperature, please be careful to scald!

1.When using the Jump Starter make sure the blue plug is FIRMLY inserted into the Jump Starter. IF NOT, the jump starter will not start your car AND this may cause damage to the jump starter.

2.Make sure the battery clamps make good clean contact with the battery terminals. IF the jump starter fails to start your car after 3 attempts, stop and check for other possible problems.

3.Remove the clamps from the battery terminal within 30 seconds after starting your car. Failure to do so may damage the jump starter.

4.DO NOT connect the two battery clamps together. Doing so is not only dangerous but will also damage the jump starter and void your warranty.

5.Make sure the jump starter has over 80% power when using to starting the car.

Warning:

1. When charging the product, please stay away from the sofa, curtains and other flammable and explosive Items to avoid causing safety accidents.

2. It is prohibited to use automobile emergency start and export for a long time, otherwise it is easy to use automobile emergency start and export for a long time.

3. Cause the battery pack to overdischarge and damage the battery.

4. If it is not used for a long time, charge and discharge the product for at least three months

5. Once to avoid overdischarge of the battery pack

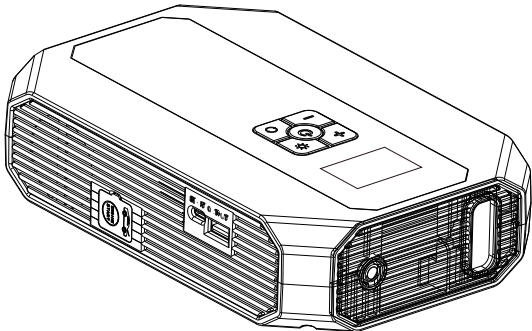
6. please store the products in a cool and ventilated place and stay away from flammable and explosive materials

7. Products, do not be exposed to the sun or stored in high temperature

8. Please do not disassemble the mainframe by yourself, please put it out of reach of children

9. To avoid causing a safety accident

12V TM16E MULTI-FUNCTION INFLATABLE STARTING POWER SUPPLY



Tips

Please read this instruction manual carefully and follow the instructions for proper use of this product.

封底

封面

封底

封面