

CAN-AM ON-ROAD KIT - Passenger Armrests

Product: **Can-Am On-Road**
Project no: **487803210_rev1**
Instruction Sheet P/N: **487803210**
Revision no: **1**
Revision date: **October 2020**
Item covered: **Passenger Armrests**

The following symbols may be used in this document:



WARNING

Indicates a hazardous situation which, if not avoided, could result in death or serious injury.



CAUTION: Indicates a hazard situation which, if not avoided, could result in minor or moderate injury.

NOTICE Indicates an instruction which, if not followed, could severely damage vehicle components or other property.



WARNING

- This kit is designed for specific applicable models only (authorized BRP dealers will confirm model(s)). It is not recommended for units other than the one (those) for which it was sold.

- Should removal of a locking device (e.g. lock tabs, self-locking fasteners, etc.) be required when undergoing disassembly/ assembly, always replace with a new one.

- Torque wrench tightening specifications must strictly be adhered to.

- Unless otherwise specified, engine must be OFF when performing any operation on the vehicle.

- Always be aware of parts that can move, such as wheels, transmission components, etc.



WARNING

Some important safety information and/or operating instructions dedicated to the end user might be included in this instruction sheet. Make sure to give the kit part number as well as the instruction sheet included with this kit to the customer. Verify that the customer has access to all the information required for proper use of the accessory.

NOTE: USE TIGHTENING TORQUES IN THE FOLLOWING TABLE IF NOT OTHERWISE SPECIFIED.

GRADE

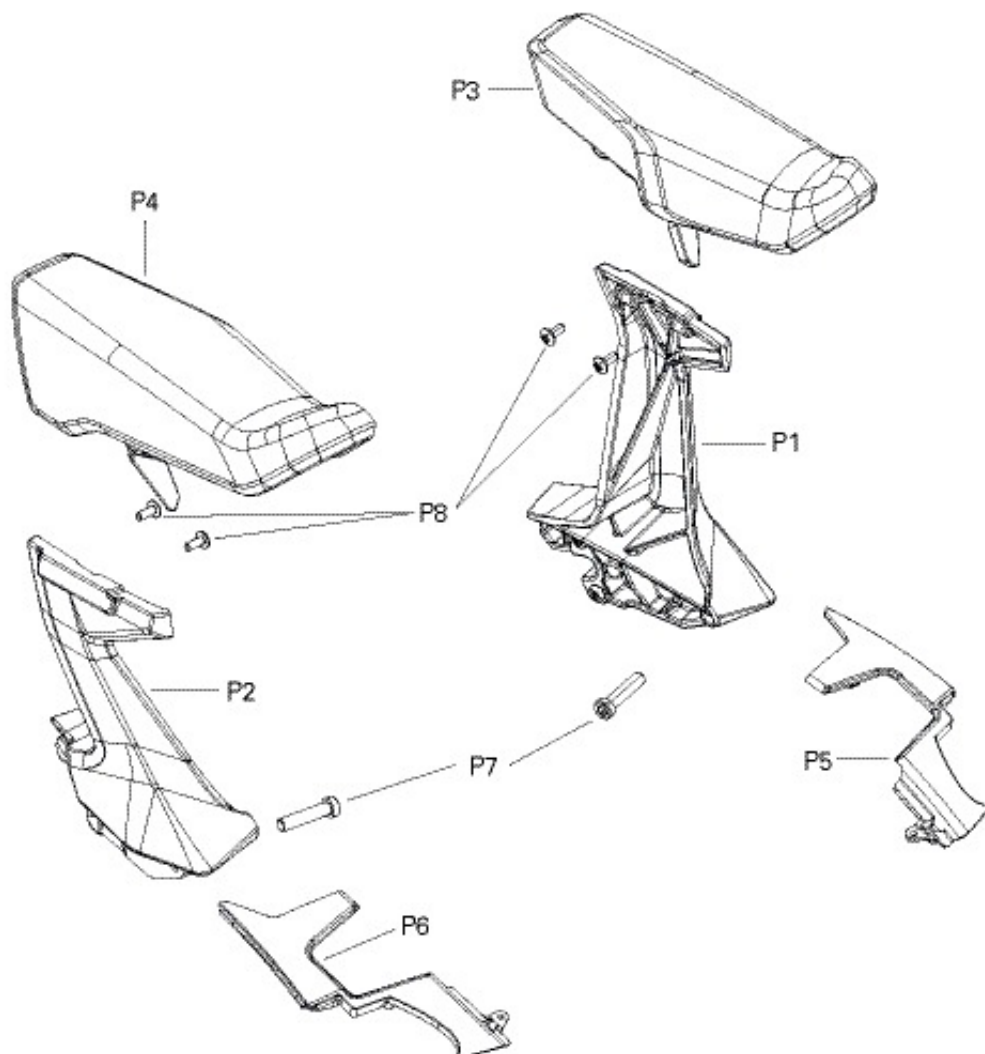
	5.8	8.8	10.9	12.9
M4	1.8 ± 0.2 N•m (16 ± 2 lbf•in)	2.8 ± 0.2 N•m (25 ± 2 lbf•in)	3.8 ± 0.2 N•m (34 ± 2 lbf•in)	4.5 ± 0.5 N•m (40 ± 4 lbf•in)
M5	3.3 ± 0.2 N•m (29 ± 2 lbf•in)	5 ± 0.5 N•m (44 ± 4 lbf•in)	7.8 ± 0.7 N•m (69 ± 6 lbf•in)	9 ± 1 N•m (80 ± 9 lbf•in)
M6	7.5 ± 1 N•m (66 ± 9 lbf•in)	10 ± 2 N•m (89 ± 18 lbf•in)	12.8 ± 2.2 N•m (113 ± 19 lbf•in)	16 ± 2 N•m (142 ± 18 lbf•in)
M8	15.3 ± 1.7 N•m (135 ± 15 lbf•in)	24.5 ± 3.5 N•m (18 ± 3 lbf•ft)	31.5 ± 3.5 N•m (23 ± 3 lbf•ft)	40 ± 5 N•m (30 ± 4 lbf•ft)
M10	29 ± 3 N•m (21 ± 2 lbf•ft)	48 ± 6 N•m (35 ± 4 lbf•ft)	61 ± 9 N•m (45 ± 7 lbf•ft)	73 ± 7 N•m (54 ± 5 lbf•ft)
M12	52 ± 6 N•m (38 ± 4	85 ± 10 N•m (63 ± 7	105 ± 15 N•m (77	128 ± 17 N•m (94

	lbf•ft)	lbf•ft)	± 11 lbf•ft)	± 13 lbf•ft)
M14	85 ± 10 N•m (63 ± 7 lbf•ft)	135 ± 15 N•m (100 ± 11 lbf•ft)	170 ± 20 N•m (125 ± 15 lbf•ft)	200 ± 25 N•m (148 ± 18 lbf•ft)
M16	126 ± 14 N•m (93 ± 10 lbf•ft)	205 ± 25 N•m (151 ± 18 lbf•ft)	255 ± 30 N•m (188 ± 22 lbf•ft)	305 ± 35 N•m (225 ± 26 lbf•ft)
M18	170 ± 20 N•m (125 ± 15 lbf•ft)	273 ± 32 N•m (201 ± 24 lbf•ft)	330 ± 25 N•m (243 ± 18 lbf•ft)	413 ± 47 N•m (305 ± 35 lbf•ft)

The illustrations in this document show typical construction of the different assemblies and may not reproduce the full detail or exact shape of the parts; however, they represent parts that have the same or similar function.

Installation time is approximately 1.0 hour.

parts to be installed



ITEM	DESCRIPTION	Part number	QTY
P1	LH Armrest Support	Not available separately	1
P2	RH Armrest Support	Not available separately	1
P3	LH Armrest Assembly	Not available separately	1
P4	RH Armrest Assembly	Not available separately	1
P5	LH Access Cover	708303863	1
P6	RH Access Cover	708303864	1

P7	M10 X 45 Hex. Scotch Grip Screw	250000997	2
P8	M6 X 16 Torx Screw	250000348	4

instructions

Vehicle Preparation



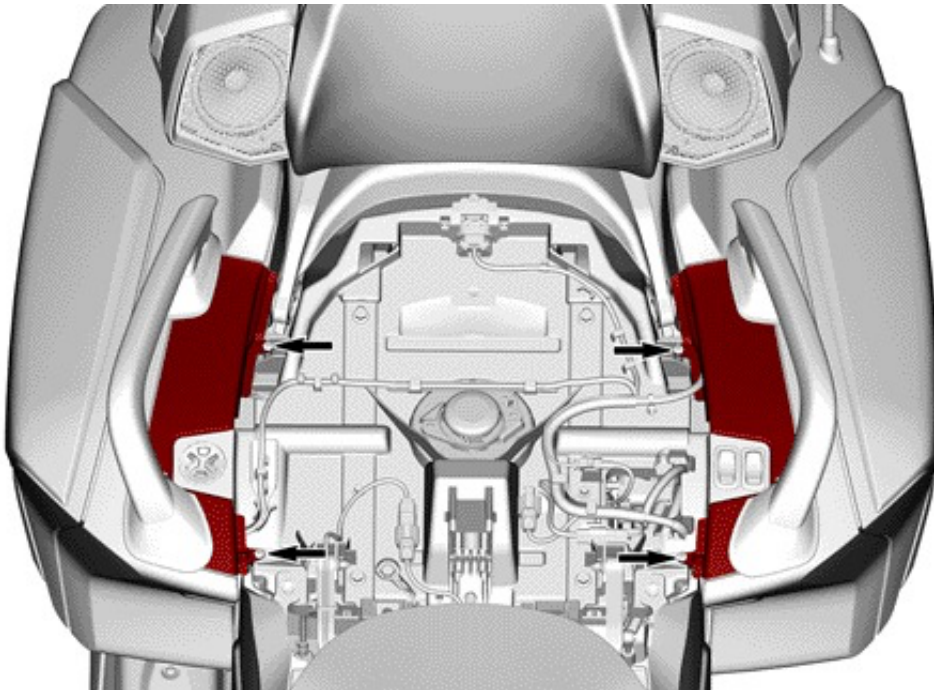
WARNING

Only install the Passenger Armrests on vehicle equipped with back support (TOP CASE KIT or PASSENGER BACKREST KIT).

Remove passenger seat. Refer to BODY subsection of the SHOP MANUAL.



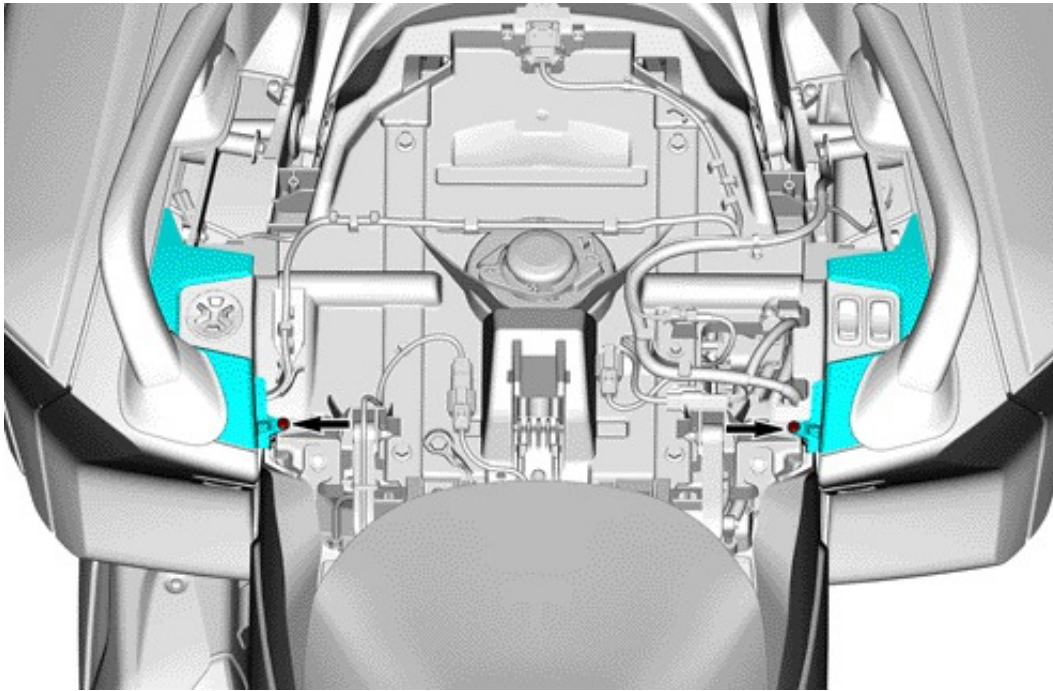
Remove access covers.



Part Installation

Install access covers [P5] and [P6].

Secure with the previously removed screws and tighten to specification.

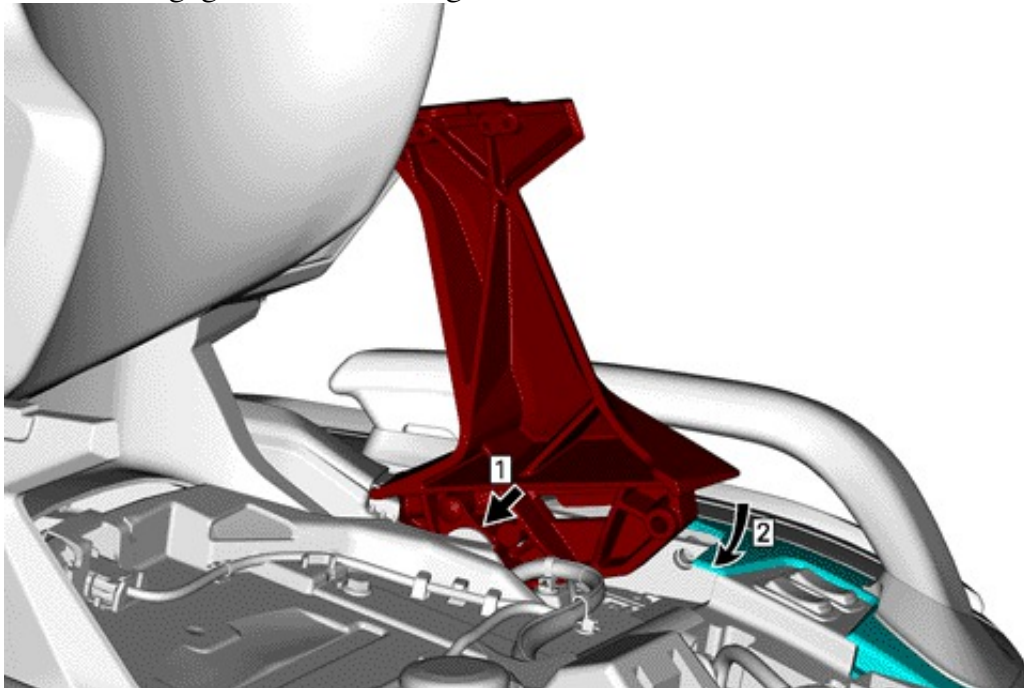


tightening torque

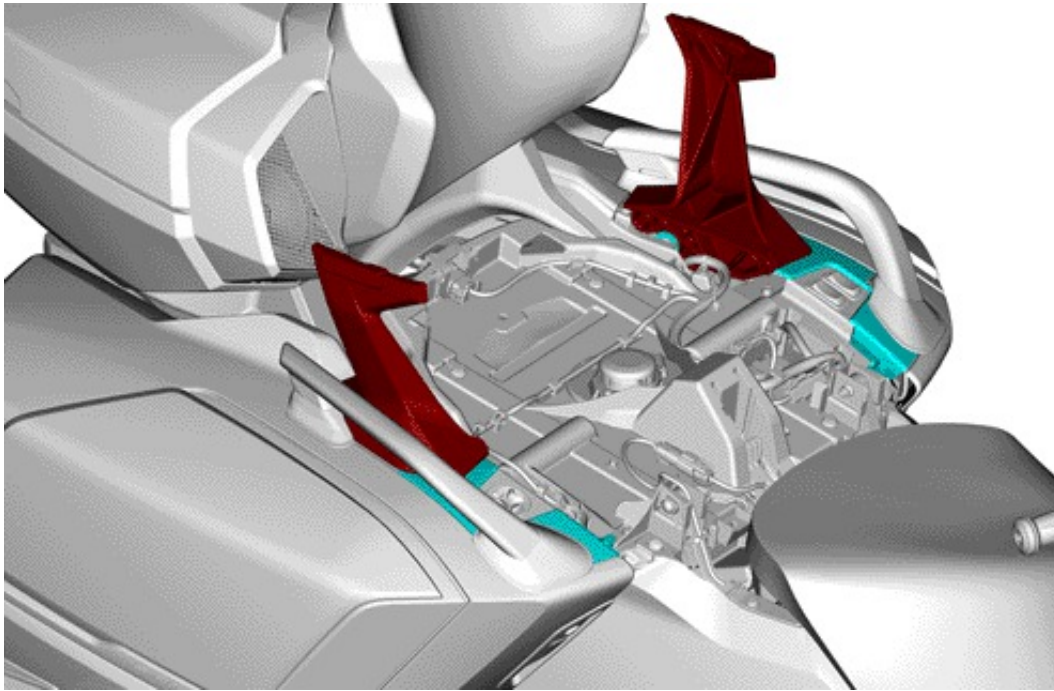
Access cover retaining screw

$29 \pm 3.0 \text{ N}\cdot\text{m}$ ($21 \pm 2 \text{ lbf}\cdot\text{ft}$)

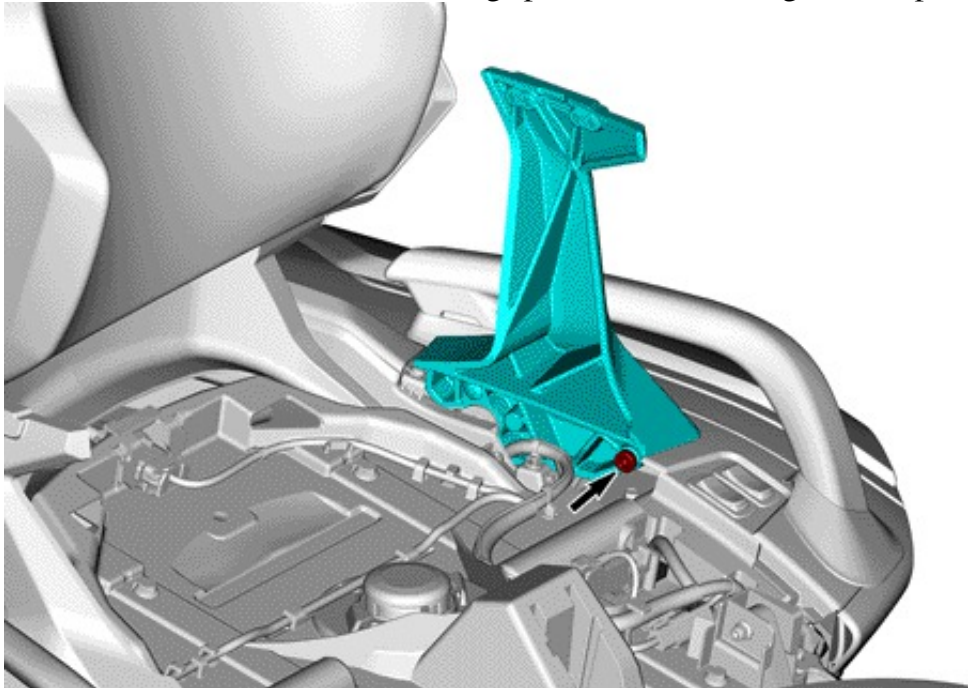
Install armrest support [P1] and [P2] on tubes.
Rotate to engage the rear and align the front hole.



Step 1:.. Install armrest support on tube
Step 2:.. Rotate to align the front holes



Secure with M10 X 45 hex. scotch grip screw [P7] and tighten to specification.

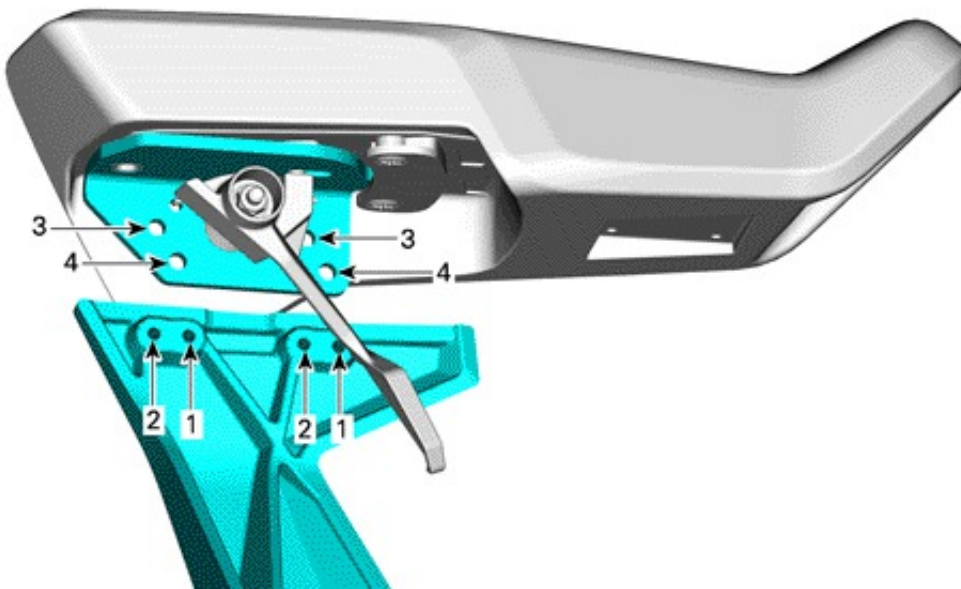


tightening torque

Hex. Scotch Grip Screw M10 X 45 [P7]

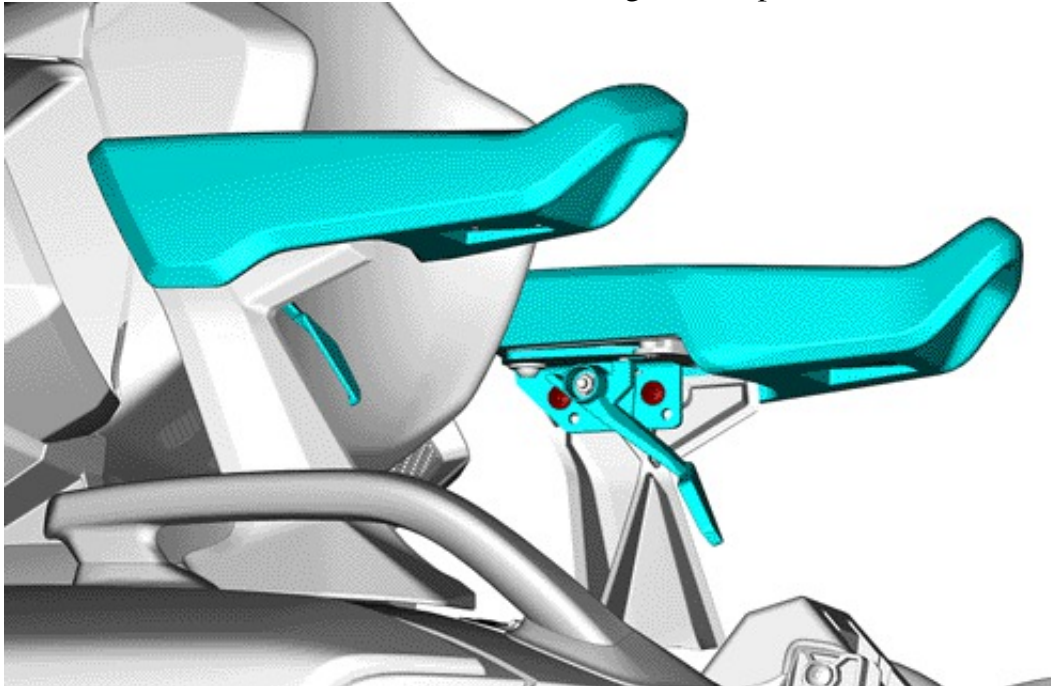
$29 \pm 3.0 \text{ N}\cdot\text{m}$ ($21 \pm 2 \text{ lbf}\cdot\text{ft}$)

Install armrest assemblies [P3] and [P4] in the desired position.



1. Front position
2. Rear position
3. Lower position
4. Upper position

Secure with M6 X 16 Torx screws [P8] and tighten to specification.



tightening torque

M6 X 16 Torx Screw [P8]

$8 \pm 1.0 \text{ N}\cdot\text{m}$ ($71 \pm 9 \text{ lbf}\cdot\text{in}$)

Adjustment

Use the locking lever to turn inside or outside the armrest.



Safe Operating Instruction

When riding, always keep forearms on armrests, holding tightly the tip that serves as a handle.

Maintain proper riding position.

Hold the passenger armrests and keep feet on the passenger footrests at all times, even with the accessory backrest.

The passenger should not hold on to the operator as the operator may not be able to withstand the lateral force generated by both.



WARNING

Never use the armrests to tie down, move or lift the vehicle.