

3. Game Import

- Insert a FAT32 formatted memory card into the external card slot of the game console, and a new folder for each platform will be created. Just put the game in the folder and select the game in the game rooms.
- Supported platform are: :ported games,PSP,PS1, DC,NDS,ARCADE,GBA,GBC,GB,SFC,FC,MAME,MD,GG, PCE,NGPC,SMS,WSC

4. Common Settings

Language Settings

Select Settings -> Language Settings in the main interface.
Available languages are: Chinese, English, Japanese, Korean, Russian, French, German, Spanish

Backlight Brightness

Select Settings -> Backlight Brightness in the main interface.
There are 5 levels of backlight brightness.

Backlight Time

Select Settings -> Backlight Time in the main interface.
There are 1 minutes, 2 minutes, 5 minutes, 10 minutes, and always on.
The screen backlight will be turned off after the set time has elapsed.

Key Customization

Button Custom: Select Settings -> Button Custom in the main interface. You can customize the button mapping of the body buttons or the gamepad.

Game quality

divided into high-definition, scan line, fast, dot matrix. Different options will present different screen filter display effects.

1. Main interface operation

Main Interface Menu:



1	game rooms	After entering, you can choose "Internal Card" or "External Card". And select the game platform to play the game.
1	RA Emulator	After entering, you can choose "Internal Card" or "External Card". And select the game platform to play the game.
2	Favorites	Press the START button in the game center to collect the game, and the game will appear in this section.
3	history	The run game will appear in this section. History can be cleared in settings.
4	search	Quickly search games from memory cards. The X key deletes the keyword and the Y key confirms the search result.
5	settings	Contains all settings for theRG35XX. Including language settings, backlight settings, background settings, etc.

5. Indicator light and charging function

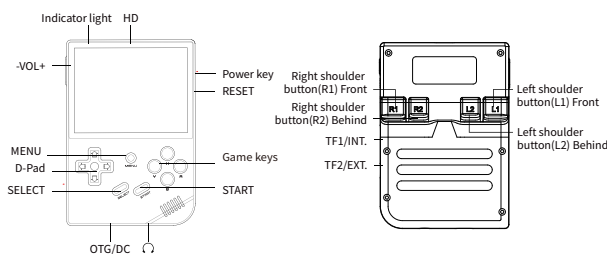
The packaging of the machine is matched with a 5V/2A four-lines charging data cable. Plug in the charging cable and the machine will start charging.

RG35XX has two indicators, the left is the charging indicator, and the right is the working indicator.

The following light color and status table:

Green light	Working
Red light	Low power
Yellow light	Charging

2. Game Buttons and Ports



6. RA Emulator Shortcuts

Menu	Menu
Menu+R2	Fast Forward
Menu+L2	Slow Motion
Menu+R1	Save State
Menu+L1	Load State
Menu+Y	Display Frame Rate
Menu+B	Screenshot
Menu+X	Pause
Menu+START	Quit
Menu+ -VOL+	Adjust Brightness
Menu+Left/Right Direction	Select Save State Slot

Get technical support services

<https://win.anbernic.com>