

Using your 'Tumble Dryer'

Getting the most from your appliance

Loading capacity



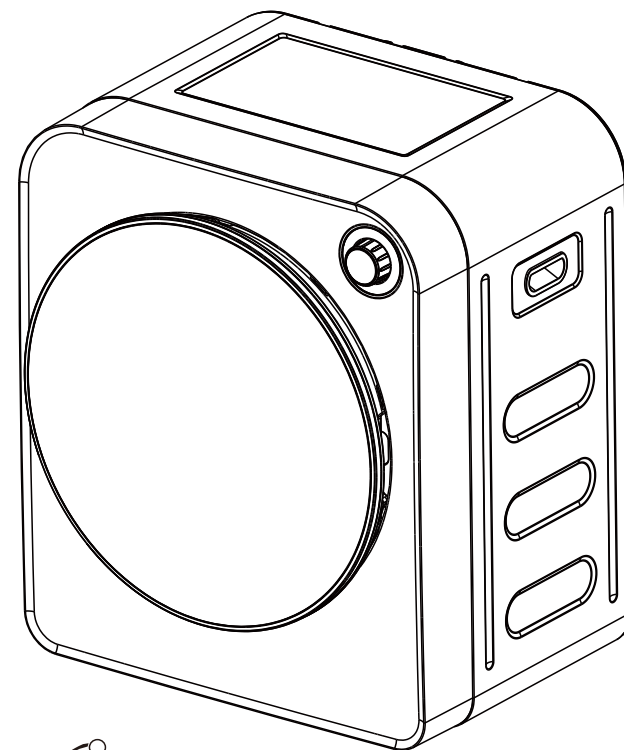
Caution: Overload is not recommended. The drying performance will be degraded when it is overloaded. The machine and your clothes may get damaged.
Please refer to the program table to select the desire loading for each setting. Do not overload the machine.

Following table can provide you the idea of the weight for different kinds of clothes.

Articles / Clothes	Approx. Weight(g)
Cotton quilt covers(single/double)	900/1500
Bed sheets (single/double)	600/900
Work clothes	1120
Large tablecloths	700
Small tablecloths	350
Tea napkins	100
Bath towels	700
Hand towels	300
Blouses	150
Cotton shirts	300
Shirts	180
Cotton dressed	500
Jeans	800
Jacket	800
Handkerchiefs	100
T-shirts	150
Shorts	70
Socks	50

Place your clothes into dryer loosely so that they have enough room and will not get tangled

EN	Electric tumble dryer for clothes
PL	Suszarka elektryczna bębnowa do ubrań
DE	Elektrischer Wäschetrockner für Kleidung
FR	Sèche-linge électrique pour vêtements
ES	Secadora eléctrica para ropa
IT	Asciugatrice elettrica per vestiti
NL	Elektrische wasdroger voor kleding
CZ	Elektrická sušička prádla na prádlo
RO	Uscător de rufe electric pentru haine




GREEN BLUE®

GB410

Dimensions
495x435x595mm



Safety Precautions

1.  Read the instructions
2. This appliance can be used by children aged from 8 years and above and persons with reduced physical, sensory or mental capabilities or lack of experience and knowledge if they have been given supervision or instruction concerning use of the appliance in a safe way and understand the hazards involved.
3. Children shall not play with the appliance.
4. Cleaning and user maintenance shall not be made by children without supervision.
5. Children of less than 3 years should be kept away unless continuously supervised.
6. If the supply cord is damaged, it must be replaced by the manufacturer, its service agent or similarly qualified persons in order to avoid a hazard.
7. The tumble dryer is not to be used if industrial chemicals have been used for cleaning.
8. The lint trap has to be cleaned frequently.
9. Lint must not be allowed to accumulate around the tumble dryer.
10. Do not dry unwashed items in the tumble dryer.
11. Items that have been soiled with substances such as cooking oil, acetone, alcohol, petrol, kerosene, spot removers, turpentine, waxes and wax removers should be washed in hot water with an extra amount of detergent before being dried in the tumble dryer.
12. Items such as foam rubber (latex foam), shower caps, rubber backed articles and clothes or pillows fitted with foam rubber pads should not be dried in the tumble dryer.
13. Fabric softeners, or similar products, should be used as specified by the fabric softener instructions.
14. **WARNING** : Never stop a tumble dryer before the end of the drying cycle unless all items are quickly removed and spread out so that the heat is dissipated.
15. **WARNING**: The appliance must not be supplied through an external switching device, such as a timer, or connected to a circuit that is regularly switched on and off by a utility.
16. The appliance must not be installed behind a lockable door, a sliding door or a door with a hinge on the opposite side to that of the tumble dryer, in such a way that a full opening of the tumble dryer door is restricted.

1. Electrical Safety Precautions

1. This dryer requires a 220-240V AC, 10A uniphase and three-stage socket.
2. Always keep combustible materials or chemicals including gasoline, kerosene or alcohol away from the dryer at all times.
3. To avoid the risk of electrical shock and damage to the dryer's electrical components, never install the dryer in humid or moist rooms/areas where the dryer will be exposed to rain or excessive humidity.
4. The power plug must be removed from electricity whenever the dryer is moved, unused or being cleaned. Never use wet hands to connect or disconnect the power from the dryer and AC plug.
5. Never use the dryer on or near foam packaging as it poses a fire hazard.
6. When the inner drum or the surface of the dryer gets dirty, please use a soft wet cloth to clean it. Do not wash it directly with water or clean it with volatile liquids (such as gasoline and alcohol).
7. Always clean around the dryer and remove any fiber or dust that may have accumulated.
8. To avoid the possibility of fire, always ensure the dryer is operating in a well-ventilated area and that air flow is always unimpeded.

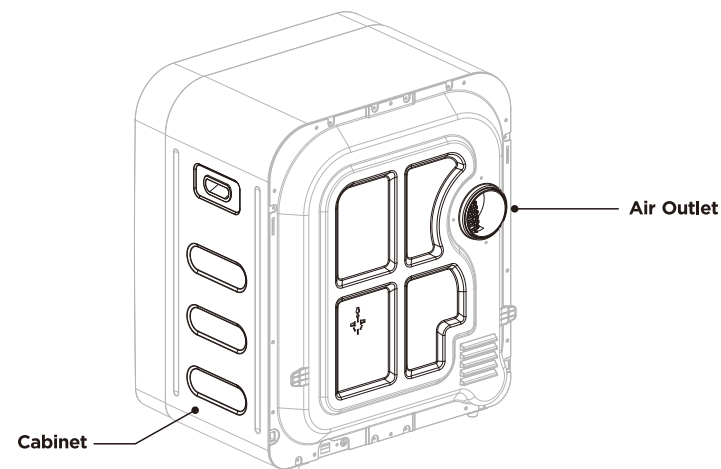
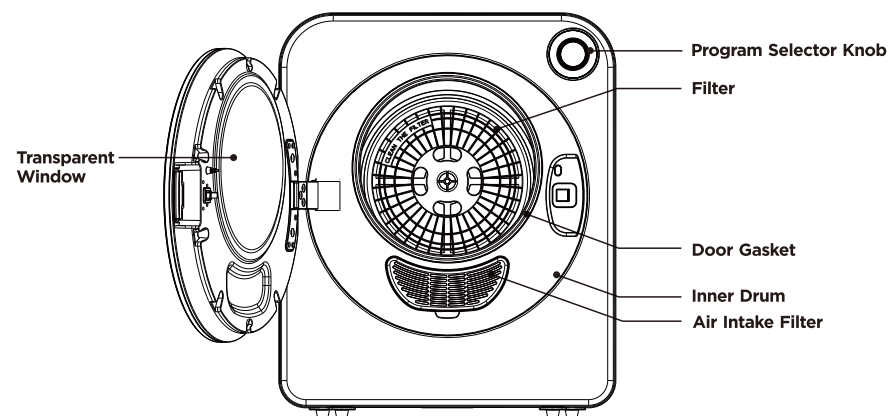
2. Operating Guidelines

1. Never put completely wet clothes into the dryer. Use the spin-cycle of a washing machine prior to dryer use.
2. Before drying, remove all objects from pockets and clothing including sharp metals or flammable substances.
3. Before using the dryer, all clothing should be zipped or buttoned and the clothing turned inside out for best results.
4. Do not use the dryer with clothing that has a label saying DO NOT WASH or DRY CLEAN ONLY.
5. For best results, dry clothing with similar fabric and materials at the same time.
6. Do not use the dryer on clothing that cannot be tumble dried. It is recommended to drip-dry, hang dry, dry flat or dry in the shade.
7. You should never cover the surface of the dryer when it is operating. It is normal for surface temperature to seem warm to the touch, and normally reaches a temperature slightly higher than the human body.



Disposal: The product with this mark indicates that this product shouldn't be disposed with other household wastes throughout the EU. To prevent possible harm to the environment or human health from uncontrolled waste disposal, recycle it responsibly to promote the sustainable reuse of material resources. To return your used device, please use the local recycle service or contact your point of purchase to withdraw the product.

Part Names



Exhaust Connector



Hanging Bracket x2 (Optional)



Wall Spacer x2 (Optional)



Expansion Bolt x4



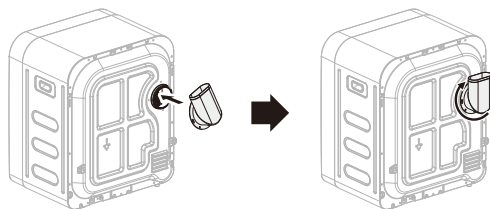
Positioning Paper

Installation

The Tumble Dryer should be put on a horizontal and solid ground, table or specialized bracket. It should be installed 10-15cm away from the back wall. When used in a narrow space, please install air fans or install exhaust pipe in the outlet to exhaust the hot and humid air out of the room. The length of the exhaust pipe should not exceed 2 meters (the exhaust pipe is not included).

1. Installation of Exhaust Connector

Adjust the direction of the exhaust connector according to actual needs, then putting it into the buckle clockwise.



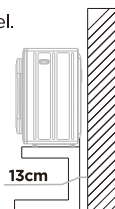
2. Horizontal Installation of the Tumble Dryer

Keep the top side of the dryer up. When the dryer is placed on horizontal ground or table, please make sure that the ground or table is solid and level.

3. Other Installation Options

• Bracket Installation (Bracket is not included)

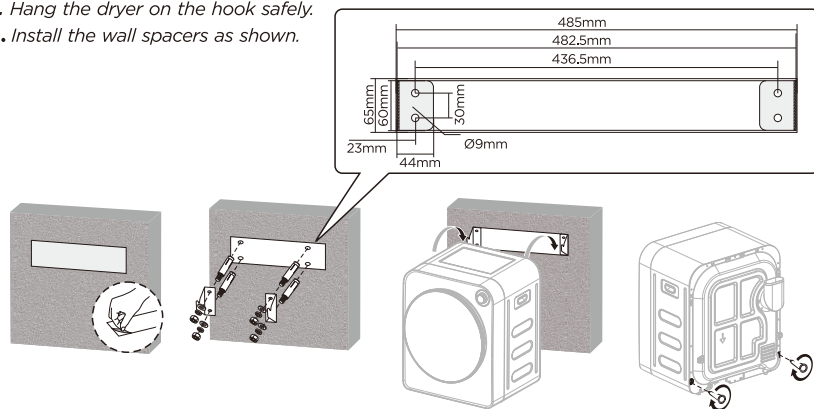
When installing the Dryer on a bracket or stand, ensure the installation will be firm and solid. To provide proper air flow, allow at least 13cm(5 inches) between the rear of the Dryer and the wall.



• Wall Mounting the Dryer

Identify the location to mount the dryer, ensuring the wall is solid and that there is ample distance above the dryer (~50mm/2 inches). If mounting above a Washing Machine, always allow enough space for the Washing Machine's cover to open.

- Mark and attach the positioning paper to the wall.
- Fasten the hook to the wall with expansion screws (M6).
- Hang the dryer on the hook safely.
- Install the wall spacers as shown.



Maintenance

In order to ensure the normal use of the dryer, please clean the outlet and intake filter frequently, and clean the Dryer regularly. Please disconnect the power plug before cleaning!

• Air Outlet Filter Cleaning

Please Clean the Air Outlet Filter After Each Use.

1	Remove the filter: put your hand into the inner drum of the machine and insert it into the four holes near the center of the outlet air hood. Pull the filter outward.	 Air outlet cover ← Filter screen ← Filter Screen cotton
2	Line crumbs cleaning: remove the air outlet cover filter cotton and filter screen respectively, and use a soft brush or vacuum cleaner to clean the lint and threads.	 Lint Filter Lint Exhaust Filter Dust Cleaner
3	Installation of the filter: after cleaning, assemble the filter in the order of filter screen, filter screen cotton and air outlet cover, then put the filter into the inner drum, make sure it is properly installed.	 Air outlet cover → Filter screen → Filter Screen cotton

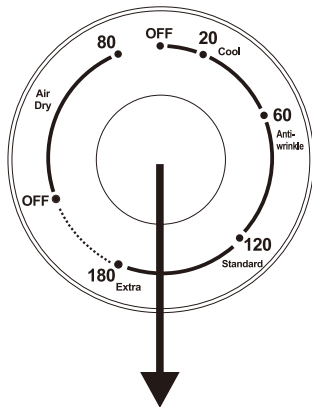
• Air Inlet Filter Cleaning

1	Hold the middle part of the air inlet filter cover and push it out slightly, then remove it.	 Filter Housing Air Intake Filter
2	Use a soft brush or vacuum cleaner to clean the dust on it.	
3	After cleaning, put the filter back into the machine.	 Filter Housing

• Overall Cleaning

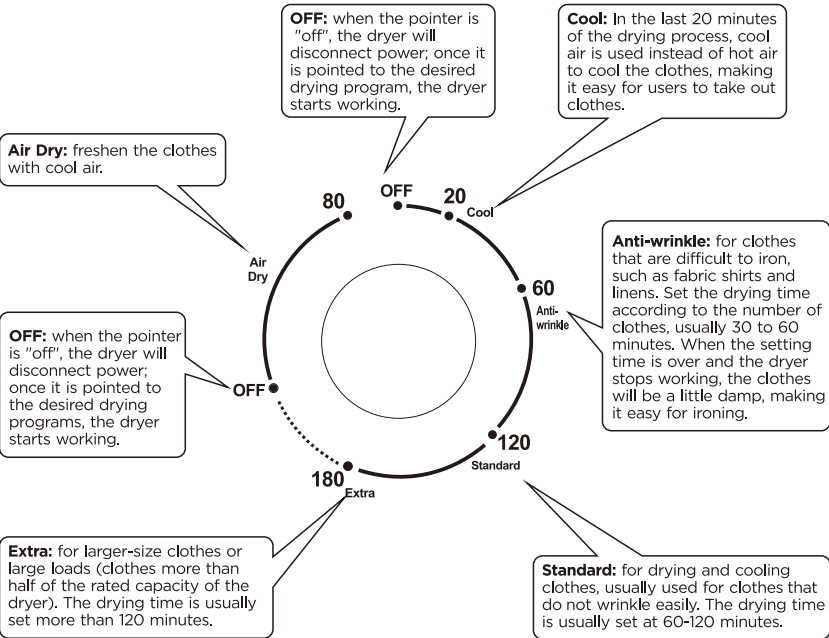
1	Use a wet soft cloth to clean the inner drum or outside of the dryer. Use a small amount of kitchen detergent to clean any difficult stains - then wipe with a clean cloth. Note: Never use gasoline or other non-cleaning agents on Dryer surfaces.	
---	--	--

Operating the Control Panel



Selection of Drying Program

There are five drying programs: Cool, Anti-wrinkle, Standard, Extra and Air Dry.



Troubleshooting the Dryer

If the dryer breaks down, please disconnect the power first and then check the machine. Sometimes it is not a fault in the following cases. Please confirm again before dealing with the problems yourself. If it is a fault, please contact your place or purchase or a qualified repair center.

Problem/error	Cause	What to do ...?
The dryer doesn't start	<ul style="list-style-type: none">Whether power is off or trip.Whether the power connector is firm and reliable.Whether the drying clothes are overloaded.Whether the temperature controller is disconnected.	<ul style="list-style-type: none">Use after power failure recovery.Check the power connection to make sure the connection is firm and reliable.The clothes loaded must be dehydrated and the drying weight (the weight of wet clothes) should not exceed 3.0 kg.Please ask our authorized service centre to replace the temperature controller.
Outside of dryer is excessively hot or electrical odor present	<ul style="list-style-type: none">The filter is blocked by the lint and threads.Air outlet or exhaust duct is blocked.	<ul style="list-style-type: none">Clean the filter before and after each use.Clear the blockages.
Clothes do not dry	<ul style="list-style-type: none">Too much clothes in the dryer.The filter is blocked, affecting the air intake and outlet.The machine is installed in a narrow and unventilated	<ul style="list-style-type: none">Dry the clothes several times.Clean air intake filter and air outlet filter regularly.Shake the clothes out and dry them again.Rearrange the machine.
Clothes have too many wrinkles	<ul style="list-style-type: none">The dryer is too full.Did not take out clothes in time after drying.Clothing is not properly classified.The temperature is set too high.	<ul style="list-style-type: none">Do not put too much clothes at a time.Take out the clothes immediately after drying.Dry the clothes after sorting.Follow the maintenance label on the clothes.
Clothes shrink	<ul style="list-style-type: none">Too dry.	<ul style="list-style-type: none">Follow the maintenance label instructions on the clothes. If the clothes shrink easily, always check them when drying them. Take it out when it's still damp to avoid over drying and hang or lay it flat to.
Clothes have fluffs	<ul style="list-style-type: none">It is normal for synthetic fibers and no-ironing fibers to have fluffs, which are caused by normal friction.	<ul style="list-style-type: none">Soften the fiber with fabric softener. When ironing clothes, spray some sizing adhesive on the collar and cuffs, or turn the inside clothes out to reduce friction.
Dryer will not re-start after using the dryer for a long time.	<ul style="list-style-type: none">The dryer's thermal protection will guard itself from overheating.	<ul style="list-style-type: none">Allow approximately 30 minutes for the dryer's temperature to return to normal.

Care and maintenance

Looking after your appliance

Model	GB410
Mode Energy efficiency class	C
Rated capacity (max.)	3.0kg
Operating noise level dB	58dB-62dB
Product dimension	495x435x595mm
Power Supply	AC 220-240V/50-60Hz
Rated Power	830W
Drum Size	Ø550x307mm
Drying Programmes	5 Modes: Cool/Anti-wrinkle/Standard/Extra/Air Dry