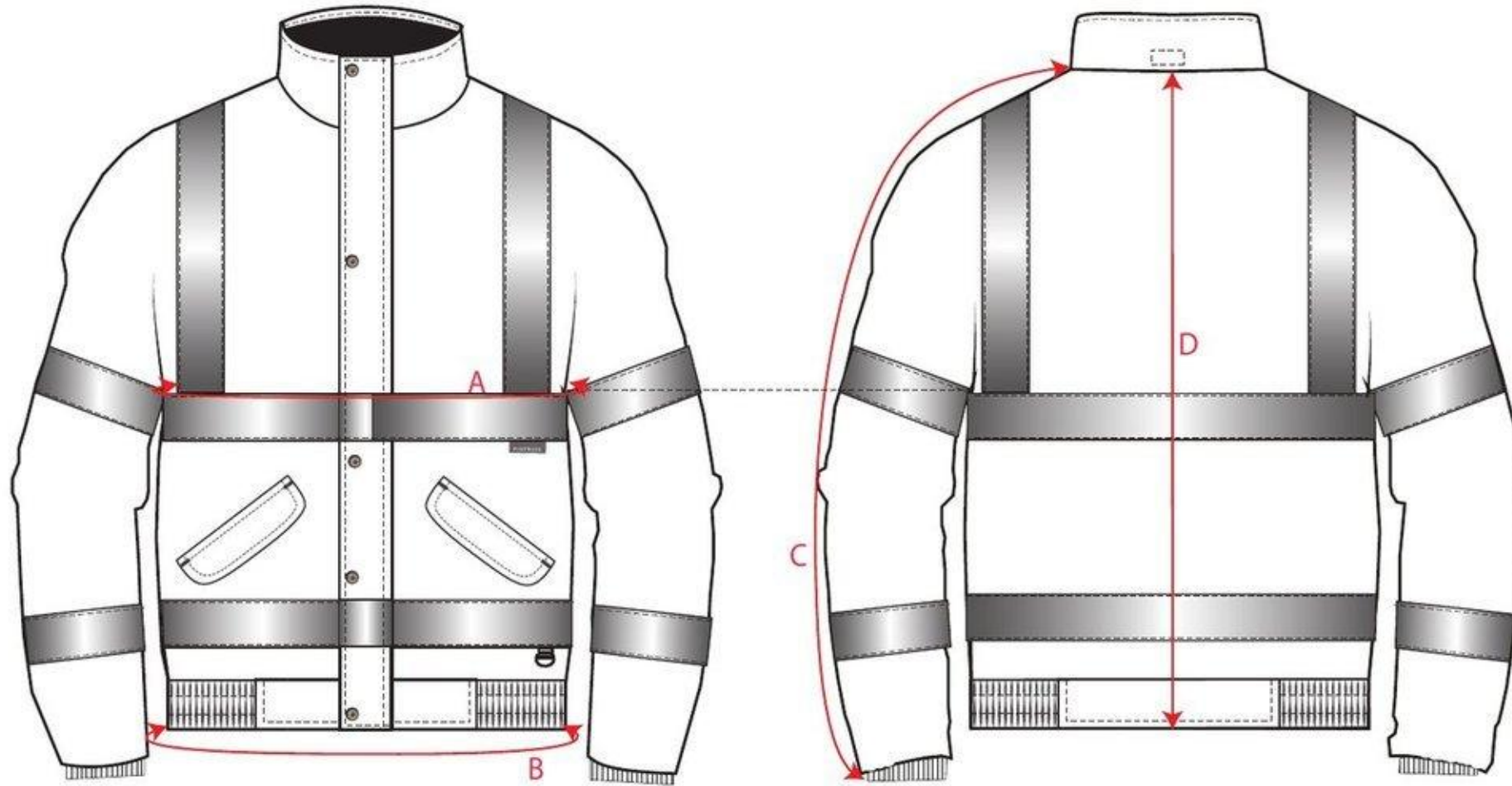


STYLE NO: S266

DESCRIPTION: Hi Vis Two Tone Bomber Jacket



Colourway



To Fit Chest	XS	S	M	L	XL	XXL	3XL	4XL	5XL	6XL	7XL	TOL	
	80-88	92-96	100-104	108-112	116-124	128-132	136-140	144-148	152-160	164-172	176-184		
Jacket Chest	A	110	118	126	134	142	150	158	166	178	190	202	1.5
Hem Relaxed	B	84	92	100	108	116	124	136	144	156	168	180	1.5
Collar to Cuff	C	81	82	83	84	85	86	87	88	88	89	89	1
Nape to Hem	D	68	68	70	70	72	72	72	74	74	75	75	1