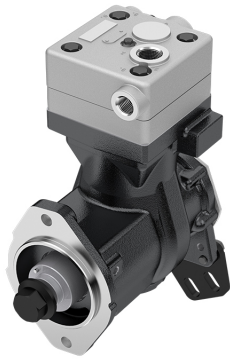


**Application:** 6 BTA A - 5,9 FORD C 1215 / C 1317 / C 1422 / C 1421 / C 1617 / C 1622

**634.01.1000**

**634.01.2000  
(WITH GEAR)**

OEM	OE
9111555000	3357107 BFOX2875BA

<b>Cylinder Bore</b>	Ø85
<b>Stroke</b>	56
<b>Swept Volume</b>	318
<b>Air Inlet Port Size</b>	3/4-14NPT
<b>Air Delivery Port Size</b>	3/4-14NPT
<b>Number of Cylinders</b>	1
<b>Through Drive</b>	YES
<b>Unloader Port Size</b>	M10*1
<b>Water Or Air Cooled</b>	W
<b>Water Inlet Port Size</b>	1/2-14NPT
<b>Water Delivery Port Size</b>	1/2-14NPT
<b>Water Cooled Valve Plate</b>	YES

## Components

634.01.1100	Crankcase	OEM	OE

617.01.1200	Cylinder Head	OEM	OE
		9111558042	

617.01.1220	Cylinder Upper Head	OEM	OE
		9111556554 8845025794	

617.01.1230	Cylinder Lower Head	OEM	OE
		9111556524 8845032002	

143.01.1400	Connecting Rod	OEM	OE
		9111457372 9111457382 9111537302	3357396 0001312417 0001312517

617.01.1500	Crankshaft	OEM	OE

663.01.1510	Pump Adapter	OEM	OE

602.01.1502	Screw for Crankshaft	OEM	OE

663.01.1600	Bearing Cover	OEM	OE

617.01.1640	Cover Kit	OEM	OE

136.01.1700	Piston With Rings (STD)	OEM	OE
		9115016242 9115016252 9120006272	1283781 1698686 0001303417 0001305317 81541196040
136.01.1700-Ø85.00 mm 136.01.1710-Ø85.25 mm 136.01.1720-Ø85.50 mm 136.01.1730-Ø85.75 mm 136.01.1740-Ø86.00 mm			

132.01.1800	Piston Ring Kit (STD)	OEM	OE
		9115019202 9118019202	3094621 0011311111
132.01.1800-Ø85.00 mm 132.01.1810-Ø85.25 mm 132.01.1820-Ø85.50 mm 132.01.1830-Ø85.75 mm 132.01.1840-Ø86.00 mm			

617.01.2300 Repair Kit With Bushing

	OEM	OE

617.01.2350 Repair Kit w/o Bushing

	OEM	OE
	9111559202	

617.01.2330 Repair Kit

	OEM	OE

617.01.1280 Head Repair Kit

	OEM	OE

617.01.2100 Gasket & Sealing Kit

	OEM	OE
	9111559212	

617.01.2200 Valve Kit

	OEM	OE

599.01.2500 Unloader Valve Kit

	OEM	OE

612.01.2900 Gear

	OEM	OE
		3928861

575.01.2600 Bushing

	OEM	OE
	9111552004	

136.01.1900 Cap

	OEM	OE
	8950735894	1304881 3094835 11712508 0001312321

136.01.2700 Screw Kit

	OEM	OE
	8912119994	

	OEM	OE

	OEM	OE

	OEM	OE