

OVER VIEW

EN .V7

NA

non-adhesive

SA

strongly adhesive

FR

flame-retardant version
available on request

PRD

digital printing possible

PRS

screen printing possible

PR+

digital/screen printing possible

PR+*

digital/screen printing possible
Prior to printing a corona or plasma
treatment has to be carried out.
By request available in pre-treated version.

PRS*

screen printing possible
Prior to printing a corona or plasma
treatment has to be carried out.
By request available in pre-treated version.

■■■■

wet room suitability

■■■■□

limited suitability for wet rooms

AR

abrasion-resistant

AR+

scratch-resistant

+ ▼

entire panel length not shown
in image

LEATHER-LINE (LL) 13
SIBUGLAS (SG) 29
WOOD-LINE (WL) 45
DECO-LINE (DM) 53
MULTISTYLE (MS) 83
STRUCTURE-LINE (SL) 91
ACRYLIC-LINE (AC) 101
TRANSLUCENT-LINE (TL) 105
PUNCH-LINE / 3D (PL/PL3D) 109
FABRIC-LINE (FL) 117
ANTIGRAV 125

LEGENDE 143

PRODUCT CHARACTERISTICS 144

EXTRA EQUIPMENT 146

PROCESSING 147

ACCESSORIES 148

STORAGE / TRANSPORT GENERAL 149

CLEANING / DISPOSAL GENERAL 149

PROCESSING INSTRUCTIONS GENERAL 150

PROCESSING INSTRUCTIONS SIBUGLAS 152

GLUED AND PRESSED ON ABSORBENT WOOD BASE SHEETS 152

BONDED ONTO COATED WOOD BASE SHEETS INCLUDING EDGES AND MILLING 155

GLUED AND PRESSED ON ABSORBENT WOOD BASE SHEETS 156

PROCESSING INSTRUCTIONS ANTIGRAV 158

SIBU | DESIGN
we decorate.

Here we could tell you about ...

- our over 35 years of experience that helped us becoming the market leader
- our wide product portfolio with more than 300 storing designs
- our short delivery time and just-in-time projects
- our high standards in quality and processing.

Or as we, as a design sheet manufacturer in green Upper Austria, focus on lastingness using 100% PVC-free material. However, this is what you assume anyway, and from our point of view - rightly!

The SIBU designer team gets inspired by fashion, architecture, furniture, automotives and sport, perceives trends and works out concepts for individual demands.

Precise. Innovative. Stylish.

If you also believe in these values, we should become acquainted!

LEATHER-LINE



LL CORD
Stony Ground

LL CORD
Dove Tale

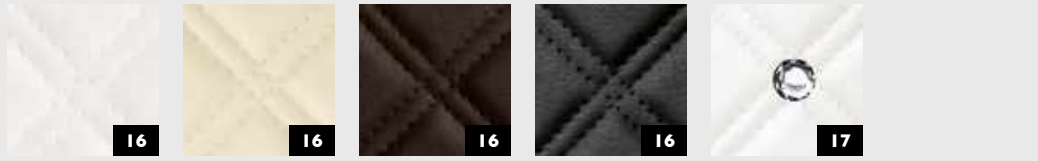
LL CORD
Charcoal Light



LL ROMBO 40
Bianco matt

LL ROMBO 40
Creme matt

LL ROMBO 40
Nero matt



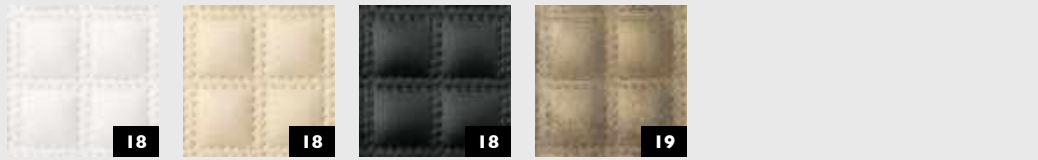
LL ROMBO 85
Bianco matt

LL ROMBO 85
Creme matt

LL ROMBO 85
Mocca matt

LL ROMBO 85
Nero matt

LL CRISTAL
ROMBO 85 Bianco
matt/Silver

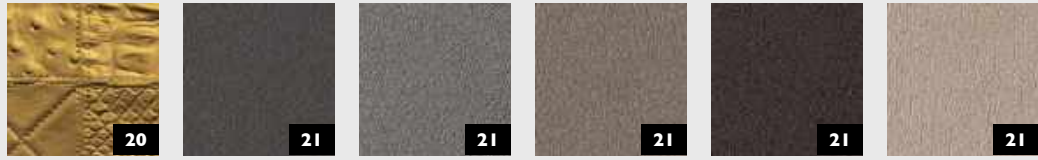


LL QUADRO
Bianco matt

LL QUADRO
Creme matt

LL QUADRO
Nero matt

LL QUADRO
LUXURY Bronze



LL COLLAGE
Oro

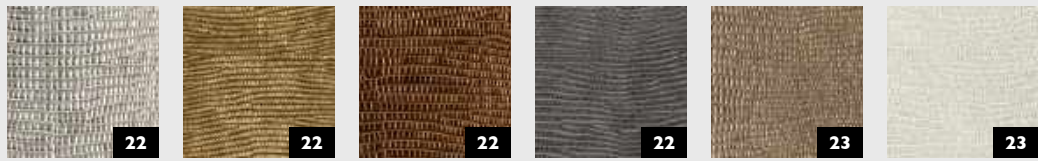
LL Charcoal
Dark

LL Charcoal
Light

LL Dove Tale

LL London Clay

LL Stony Ground



LL LEGUAN
Silver

LL LEGUAN
Gold

LL LEGUAN
Copper

LL LEGUAN
Nero

LL LEGUAN Silk

LL LEGUAN
Bianco



LL PERSIAN
Gold

LL PERSIAN
Metallic

LL PEARL RAY
Gold

LL FLORAL
White

LL FLORAL
VINTAGE Silver/
Silver

LL FLORAL
White/Silver
matt

LL FLORAL
White/Gold matt

LL FLORAL
Black/Silver matt

SIBUGLAS



SG CURVED
Silver AR+



SG CURVED
Gold AR+



SG CURVED
Rose AR+



SG ALIGNED
Silver AR+



SG ALIGNED
Gold AR+



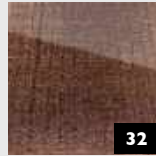
SG ALIGNED
Rose AR+



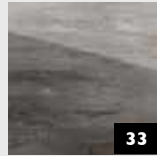
SG GRID
Silver AR+



SG GRID
Gold AR+



SG GRID
Rose AR+



SG GENESIS
Grey AR+



SG MARBLE
Brown AR+



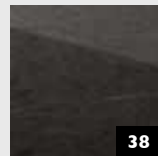
SG MARBLE
Alpine AR+



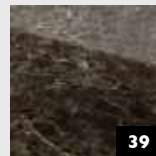
SG MARBLE
Black AR+



SG MARBLE
White AR+



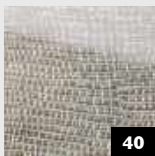
SG MARBLE
Grey AR+



SG MARBLE
Emperador AR+



SG LEGUAN
Bianco met AR+



SG LEGUAN
Silver AR+



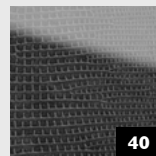
SG LEGUAN Silk
AR+



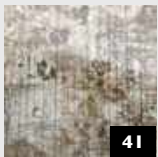
SG LEGUAN
Gold AR+



SG LEGUAN
Copper AR+



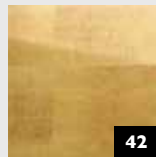
SG LEGUAN
Nero AR+



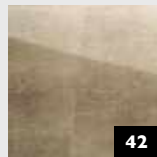
SG VINTAGE
Silver AR+



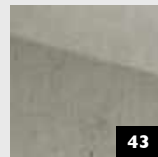
SG VINTAGE
Copper AR+



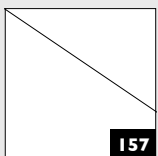
SG LUXURY
Gold AR+



SG LUXURY
Bronze AR+

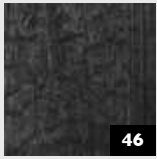


SG OLD Platin
AR+



suitable
balancing sheet

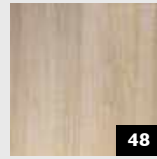
WOOD-LINE



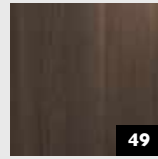
WL Carbonized Wood



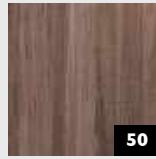
WL Wenge Wood



WL Maple Alpine

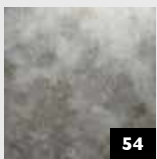


WL Nutwood

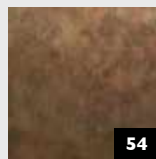


WL Nutwood Country

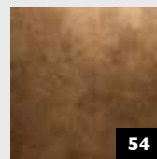
DECO-LINE



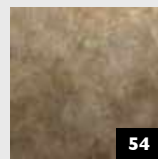
DM OXIDIZED Silver AR



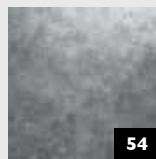
DM OXIDIZED Autumn AR



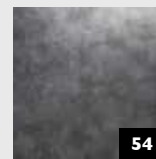
DM OXIDIZED Copper AR



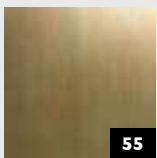
DM OXIDIZED Nickel AR



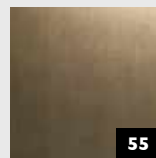
DM OXIDIZED Platin AR



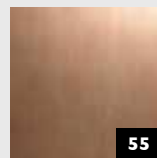
DM OXIDIZED Titan AR



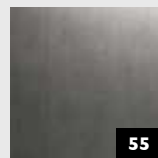
DM SLIGHTLY USED Gold AR



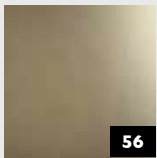
DM SLIGHTLY USED Bronze AR



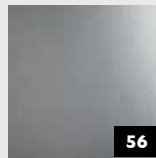
DM SLIGHTLY USED Copper AR



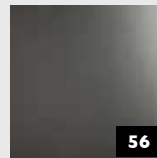
DM SLIGHTLY USED Titan AR



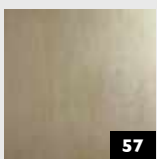
DM METALLIC USED Champagne AR



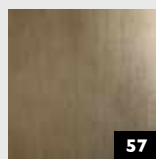
DM METALLIC USED Silver AR



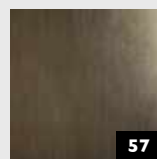
DM METALLIC USED Titan AR



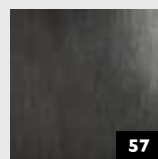
DM METALLIC USED Ivory AR



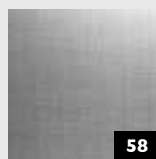
DM METALLIC USED Sand AR



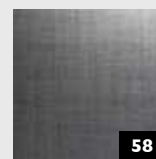
DM METALLIC USED Bronze AR



DM METALLIC USED Steel AR



DM REFINED METAL Silver AR



DM REFINED METAL Titan AR

DECO-LINE



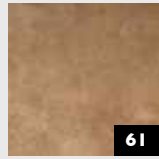
DM SILENT Gold AR



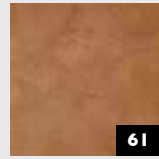
DM Iron Age AR



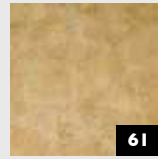
DM CLASSY Silver AR



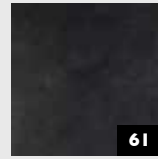
DM CLASSY Bronze AR



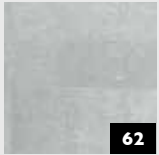
DM CLASSY Copper AR



DM CLASSY Gold AR



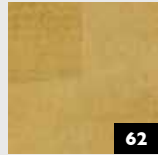
DM CLASSY Black AR



DM LUXURY Silver AR



DM LUXURY Bronze AR



DM LUXURY Gold AR



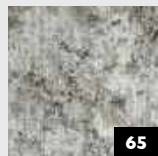
DM MONSOON VINTAGE Brown



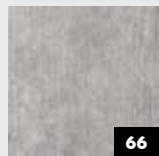
DM MARBLE White



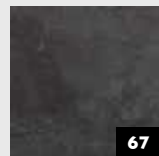
DM VINTAGE Copper



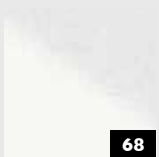
DM VINTAGE Silver



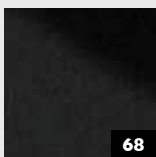
DM CEMENT Light



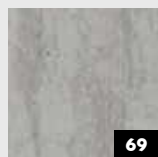
DM CEMENT Dark



DM MAGIC White AR



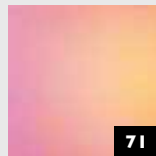
DM MAGIC Black AR



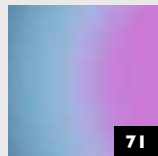
DM Travertin



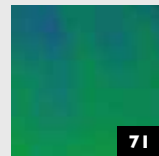
DM GALAXY Silver



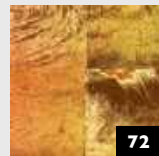
DM Hollywood



DM Hollywood Blue

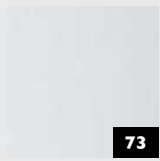


DM Aqua



DM LUXURY Holografico

DECO-LINE



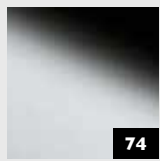
73

DM Silver PF



73

DM Smoke PF



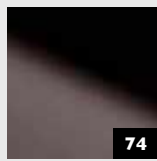
74

DM OPTICAL MIRROR Silver AR



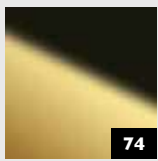
74

DM OPTICAL MIRROR Fashion Grey AR



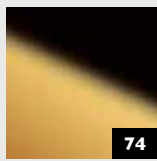
74

DM OPTICAL MIRROR Anthracite AR



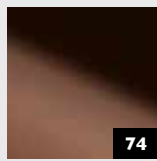
74

DM OPTICAL MIRROR Brass AR



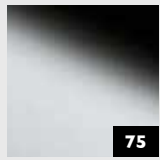
74

DM OPTICAL MIRROR Gold AR



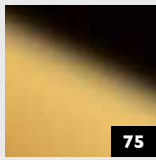
74

DM OPTICAL MIRROR Copper AR



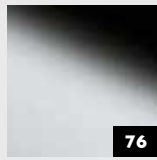
75

DM Silver MMS



75

DM Gold MMS



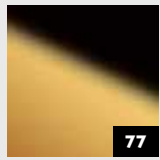
76

DM Silver



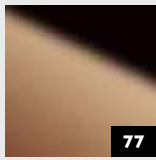
76

DM Silver/White



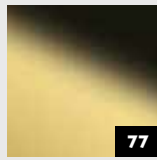
77

DM Gold AR



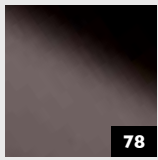
77

DM Rosegold AR



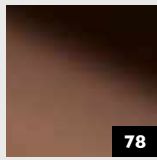
77

DM Brass AR



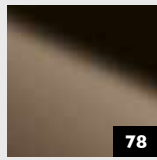
78

DM Anthracite AR



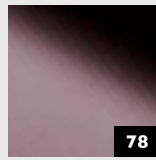
78

DM Copper AR



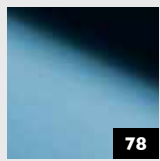
78

DM Brown AR



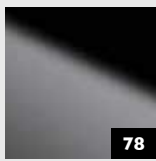
78

DM Rose AR



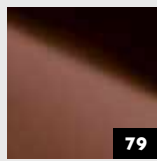
78

DM Iceblue AR



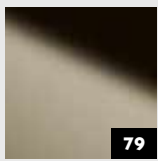
78

DM Fashion Grey AR



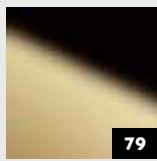
79

DM Bronze



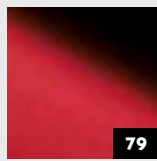
79

DM Champagne



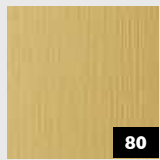
79

DM Gold 30



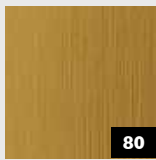
79

DM Fashion Red



80

DM Brass brushed matt AR



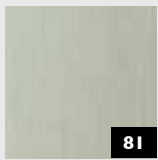
80

DM Gold brushed matt AR



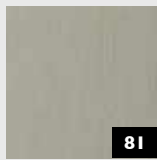
81

DM Silver brushed



81

DM HGS



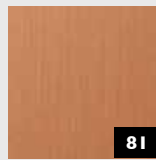
81

DM Champagne brushed



81

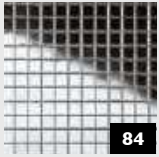
DM Titan brushed



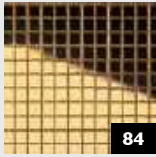
81

DM Copper brushed

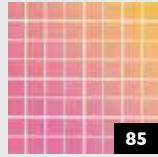
MULTISTYLE



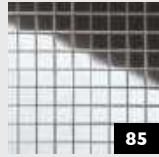
MS 3x3 flex
Classic Silver



MS 3x3 flex
Classic Gold AR



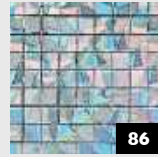
MS 5x5 flex
Classic Hollywood



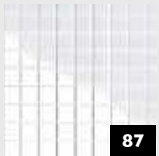
MS 5x5 flex
Classic Silver



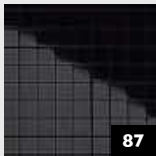
MS 5x5 flex
Classic Gold AR



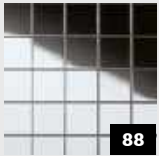
MS 5x5 flex
Classic GALAXY
Silver



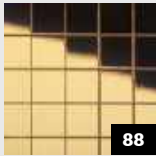
MS 5x5 flex
Classic MAGIC
White



MS 5x5 flex
Classic MAGIC
Black



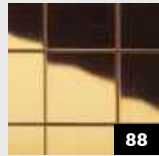
MS 10x10 flex
Classic Silver



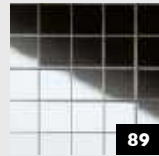
MS 10x10 flex
Classic Gold AR



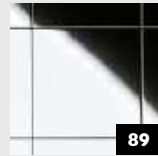
MS 20x20 flex
Classic Silver



MS 20x20 flex
Classic Gold AR

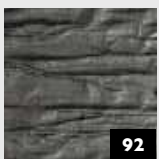


MSC 10x10 flex
Classic Silver

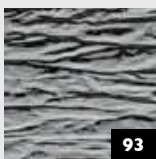


MSC 30x30 flex
Classic Silver

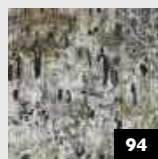
STRUCTURE-LINE



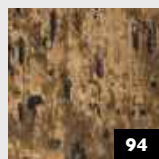
SL CRASHED
OLD Platin



SL CRASHED
Silver



SL IMPACT
VINTAGE Silver



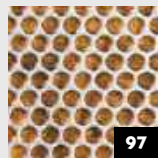
SL IMPACT
ANTIQUE Bronze



SL LAVA VINTAGE
Copper



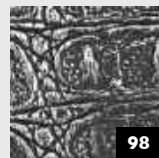
SL RACE
VINTAGE Silver/
Bronze



SL RACE
VINTAGE Copper/
Silver



SL CROCO
Silver PF/Silver



SL CROCO
Smoke PF/Silver

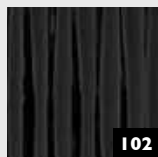


SL SQUARE 3
HGS

ACRYLIC-LINE



AC MOTION
ONE White



AC MOTION
ONE Black



AC MOTION
TWO White



AC MOTION
TWO Black

TRANSLUCENT-LINE



TL LINEA
104x62 OLD
Platin



TL LINEA
104x62 SILENT
Gold

PUNCH-LINE / 3D



PL3D Q-10-30
OLD Platin/Silver



PL3D H-10-30
Pearl White
PF/Gold



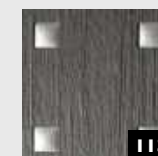
PL3D ROSES
Pearl White PF/
Gold



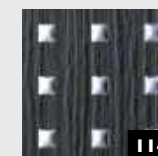
PL3D ROSES
Silver PF/Silver



PL3D Q 10-40-40
Silver PF/Silver



PL3D Q 10-40-40
Smoke PF T1/
Silver matt



PL3D Q 5-15-15
Black T1/Silver



PL Q 5-15-15
Silver PF

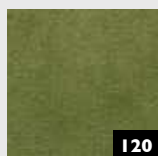
FABRIC-LINE



FL PELO
Marabu



FL VELVET
Bordeaux



FLVELVET
Avocado



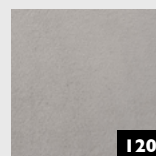
FL VELVET
Curry



FL VELVET
Mocha



FL VELVET Coal

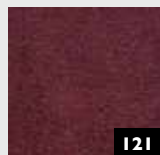


FLVELVET Pearl



FL VELVET
Volcano

ANTIGRAV



FL VELVET
Bordeaux
Antigrav



FL VELVET
Avocado
Antigrav



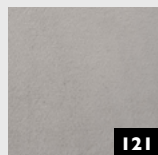
FL VELVET
Curry Antigrav



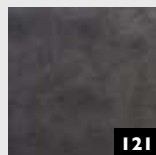
FL VELVET
Mocha Antigrav



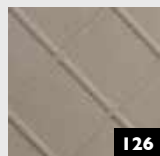
FL VELVET Coal
Antigrav



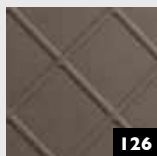
FL VELVET Pearl
Antigrav



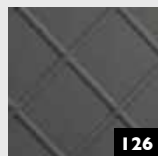
FL VELVET
Volcano Antigrav



LL CORD
Stony Ground
Antigrav



LL CORD
Dove Tale
Antigrav



LL CORD
Charcoal Light
Antigrav



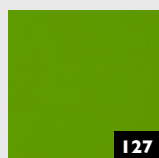
LL Lemon
Yellow Antigrav



LL Pumpkin
Orange Antigrav



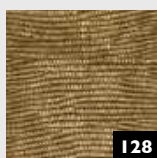
LL Cobalt Blue
Antigrav



LL Apple Green
Antigrav



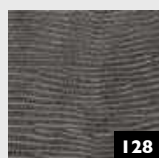
LL LEGUAN
Silver Antigrav



LL LEGUAN
Gold Antigrav



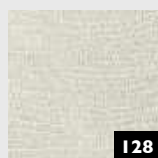
LL LEGUAN
Copper Antigrav



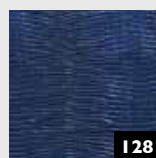
LL LEGUAN
Nero Antigrav



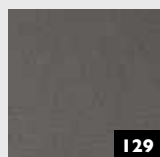
LL LEGUAN Silk
Antigrav



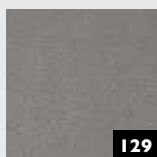
LL LEGUAN
Bianco Antigrav



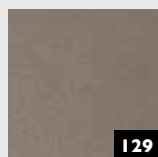
LL LEGUAN
Blue Antigrav



LL Charcoal
Dark Antigrav



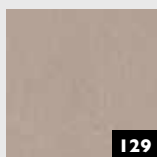
LL Charcoal
Light Antigrav



LL Dove Tale
Antigrav



LL London Clay
Antigrav



LL Stony Ground
Antigrav



LL IMPERIAL
White Antigrav



LL ANTIGUA
Gold Antigrav



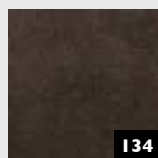
DM CEMENT
Dark Antigrav



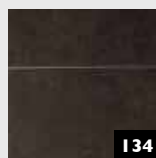
DM CEMENT
Light Antigrav



DM CERAMIC
Grey Antigrav



DM CERAMIC
Brown Antigrav



DM CERAMIC
Brown/Grey brushed
8L Antigrav



DM MARBLE
White Antigrav



DM Travertin
Antigrav



LL LACE Black/
Platin Antigrav



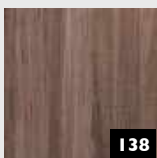
LL LACE White/
Black Antigrav



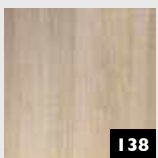
LL LACE White/
Vintage Brown
Antigrav



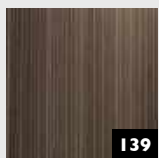
WL Nutwood
Antigrav



WL Nutwood
Country Antigrav



WL Maple Alpine
Antigrav

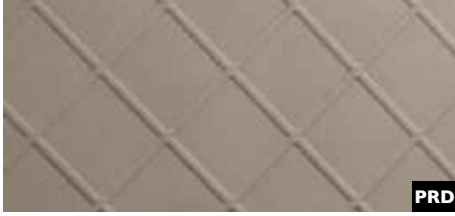


WL Wenge Wood
Antigrav

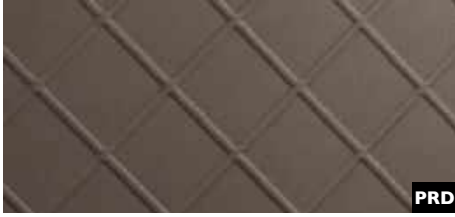


WL Carbonized
Wood Antigrav

LEATHER- LINE



LL CORD Stony Ground
2600 x 1000 / **NA** 19542 / **SA** 19545



LL CORD Dove Tale
2600 x 1000 / **NA** 19532 / **SA** 19544



LL CORD Charcoal Light
2600 x 1000 / **NA** 19543 / **SA** 19546



Photo: iStock.com

2600 x 1000



LEATHER-LINE

LL CORD

Product characteristics

	NA	SA
Base material	HIPS	
Surface material	PU-leather	
Material thickness mm	2	2,13
Max. relief height mm	3,2	3,33
Temperature stability	up to 60 °C	
Wet room suitability	■■■■■	
Rolled packable *	✓	✓

* Design sheets to be rolled with the decor side outwardly (both – NA and SA version). We recommend rolling not more than 3 sheets per carton (480 x 480 mm).

Extra equipment

	NA	SA
Special formats	–	–
Further thicknesses	–	–
Cuttings	✓	✓
Magnetic from 3 sheets	✓	
PVA pre-treatment	✓	–

Processing

	NA	SA
Cutting, punching	✓	✓
Drilling	✓	✓
Sawing	✓	–
Laser cutting	✓	✓
Hot bending	✓	–
PVA compressible	✓	–
Smallest bending radius	150 mm	150 mm

Accessories

SIBUKLE	Spatula A2
---------	------------

Special colors

On request





□ LL ROMBO 40
Crema matt

Photo: Jesse



LL ROMBO 40 Bianco matt
2600 x 1000 / **NA** I5025 / **SA** I5041



LL ROMBO 40 Crema matt
2600 x 1000 / **NA** I3848 / **SA** I3863



□ LL ROMBO 40
Nero matt



LL ROMBO 40 Nero matt
2600 x 1000 / **NA** I5014 / **SA** I5029

LEATHER-LINE

LL ROMBO 40

2600 x 1000



Product characteristics

	NA	SA
Base material	HIPS, PE-foam	
Surface material	PU-leather	
Material thickness mm	3,8	4,04
Max. relief height mm	5,0	5,24
Temperature stability	up to 60 °C	
Wet room suitability	■■■■■	
Rolled packable *	✓	✓

* Design sheets to be rolled with the decor side outwardly (both – NA and SA version). We recommend rolling not more than 3 sheets per carton (480 x 480 mm).

Processing

	NA	SA
Cutting, punching	✓	✓
Drilling	✓	✓
Laser cutting	✓	✓
Hot bending	—	—
PVA compressible	—	—
Smallest bending radius	300 mm	300 mm

Extra equipment

	NA	SA
Special formats	—	—
Further thicknesses	—	—
Cuttings	✓	✓
Magnetic	—	
PVA pre-treatment	—	—

Accessories

SIBUKLE	Spatula A2
---------	------------

Special colors

On request



LL ROMBO 85 Bianco matt
2600 x 1000 / **NA** I5026 / **SA** I5042



LL ROMBO 85 Creme matt
2600 x 1000 / **NA** I3852 / **SA** I3867



LL ROMBO 85 Mocca matt
2600 x 1000 / **NA** I5021 / **SA** I5037



LL ROMBO 85 Nero matt
2600 x 1000 / **NA** I5015 / **SA** I5030

2600 x 1000



□
LL ROMBO 85
Creme matt

Photo: Boris Breuer - CABINET Schranksysteme AG

LEATHER-LINE

LL ROMBO 85

Product characteristics

	NA	SA
Base material	HIPS, PE-foam	
Surface material	PU-leather	
Material thickness mm	3,8	4,04
Max. relief height mm	5,0	5,24
Temperature stability	up to 60 °C	
Wet room suitability	■■■■■	
Rolled packable *	✓	✓

* Design sheets to be rolled with the decor side outwardly (both – NA and SA version). We recommend rolling not more than 3 sheets per carton (480 x 480 mm).

Extra equipment

	NA	SA
Special formats	–	–
Further thicknesses	–	–
Cuttings	✓	✓
Magnetic	–	
PVA pre-treatment	–	–

Processing

	NA	SA
Cutting, punching	✓	✓
Drilling	✓	✓
Laser cutting	✓	✓
Hot bending	–	–
PVA compressible	–	–
Smallest bending radius	300 mm	300 mm

Accessories

SIBUKLE	Spatula A2
---------	------------

Special colors

On request



□
LL CRISTAL ROMBO 85
Bianco matt/Silver



LL CRISTAL ROMBO 85 Bianco matt/Silver
2600 x 1000 / SA 15044

Photo: Cary Horowitz

LEATHER-LINE

LL CRISTAL ROMBO 85

2600 x 1000

Product characteristics

	SA
Base material	HIPS, PE-foam
Surface material	PU-leather, crystal: PMMA
Material thickness mm	4,04
Max. relief height mm	5,24
Temperature stability	up to 60 °C
Wet room suitability	■■■□
Rolled packable *	✓

* Design sheets to be rolled with the decor side outwardly (both – NA and SA version). We recommend rolling not more than 3 sheets per carton (480 x 480 mm).

Extra equipment

	SA
Special formats	—
Further thicknesses	—
Cuttings	✓
Magnetic	—
PVA pre-treatment	—

Processing

	SA
Cutting, punching	✓
Drilling	✓
Laser cutting	✓
Hot bending	—
PVA compressible	—
Smallest bending radius	300 mm

Accessories

SIBUKLE	Spatula A2
---------	------------

Special colors

On request





LL QUADRO Bianco matt
2600 x 1000 / **NA** I6420 / **SA** I5175



LL QUADRO Creme matt
2600 x 1000 / **NA** I4273 / **SA** I4277



LL QUADRO Nero matt
2600 x 1000 / **NA** I5017 / **SA** I5032



□ LL QUADRO Nero matt

Photo: Jesse



□ LL QUADRO Creme matt

Photo: Bertrand Benoit

2600 x 1000



LEATHER-LINE

LL QUADRO

Product characteristics

	NA	SA
Base material	HIPS, PE-foam	
Surface material	PU-leather	
Material thickness mm	2,8	3,04
Max. relief height mm	4,8	5,04
Temperature stability	up to 60 °C	
Wet room suitability	■■■■■	
Rolled packable *	✓	✓

* Design sheets to be rolled with the decor side outwardly (both – NA and SA version). We recommend rolling not more than 3 sheets per carton (480 x 480 mm).

Extra equipment

	NA	SA
Special formats	–	–
Further thicknesses	–	–
Cuttings	✓	✓
Magnetic	–	
PVA pre-treatment	–	–

Processing

	NA	SA
Cutting, punching	✓	✓
Drilling	✓	✓
Laser cutting	✓	✓
Hot bending	–	–
PVA compressible	–	–
Smallest bending radius	300 mm	300 mm

Accessories

SIBUKLE	Spatula A2
---------	------------

Special colors

On request





□
LL QUADRO
LUXURY Bronze



LL QUADRO LUXURY Bronze
2600 x 1000 / **NA** 17831 / **SA** 17851

LEATHER-LINE

LL QUADRO

2600 x 1000

Product characteristics

	NA	SA
Base material	HIPS, PE-foam	
Surface material	PU-leather	
Material thickness mm	2,8	3,04
Max. relief height mm	4,8	5,04
Temperature stability	up to 60 °C	
Wet room suitability	■■■■□	
Rolled packable *	✓	✓

* Design sheets to be rolled with the decor side outwardly (both – NA and SA version). We recommend rolling not more than 3 sheets per carton (480 x 480 mm).

Extra equipment

	NA	SA
Special formats	–	–
Further thicknesses	–	–
Cuttings	✓	✓
Magnetic	–	
PVA pre-treatment	–	–

Processing

	NA	SA
Cutting, punching	✓	✓
Drilling	✓	✓
Laser cutting	✓	✓
Hot bending	–	–
PVA compressible	–	–
Smallest bending radius	300 mm	300 mm

Accessories

SIBUKLE	Spatula A2
---------	------------

Special colors

On request





LL COLLAGE Oro

2600 x 1000 / 1,9 / **NA** 13923 / **SA** 13926



□
LL COLLAGE Oro

2600 x 1000



LEATHER-LINE

LL COLLAGE

Product characteristics

	NA	SA
Base material	HIPS	
Surface material	PU-leather	
Material thickness mm	1,9	2,15
Max. relief height mm	3,5	3,75
Temperature stability	up to 60 °C	
Wet room suitability	■■■■□	
Rolled packable *	✓	✓

Processing

	NA	SA
Cutting, punching	✓	✓
Drilling	✓	✓
Sawing	✓	—
Laser cutting	✓	✓
Hot bending	✓	—
PVA compressible	✓	—
Smallest bending radius	150 mm	150 mm

Extra equipment

	NA	SA
Special formats	—	—
Further thicknesses	—	—
Cuttings	✓	✓
Magnetic from 3 sheets	✓	
PVA pre-treatment Oro	—	—

Accessories

SIBUKLE	Spatula A2
---------	------------

Special colors

On request

* Design sheets to be rolled with the decor side outwardly (both – NA and SA version). We recommend rolling not more than 3 sheets per carton (480 x 480 mm).



□ LL Dove Tale

Photo: © istock.com



LL Charcoal Dark
2600 x 1000 / **NA** 19299 / **SA** 19302



LL Charcoal Light
2600 x 1000 / **NA** 19298 / **SA** 19301



LL Dove Tale
2600 x 1000 / **NA** 19013 / **SA** 19024



LL London Clay
2600 x 1000 / **NA** 19014 / **SA** 19025



LL Stony Ground
2600 x 1000 / **NA** 19012 / **SA** 19023

LEATHER-LINE

LEATHER-LINE

Product characteristics

	NA	SA
Base material	HIPS	
Surface material	PU-leather	
Material thickness mm	1,95	2,08
Temperature stability	up to 60 °C	
Wet room suitability	■■■■	
Rolled packable *	✓	✓

* Design sheets to be rolled with the decor side outwardly (both – NA and SA version). We recommend rolling not more than 3 sheets per carton (480 x 480 mm).

Processing

	NA	SA
Cutting, punching	✓	✓
Drilling	✓	✓
Sawing	✓	—
Laser cutting	✓	✓
Hot bending	✓	—
PVA compressible	✓	—
Smallest bending radius	150 mm	150 mm

Extra equipment

	NA	SA
Special formats	On request	
Further thicknesses	✓	✓
Cuttings	✓	✓
Magnetic from 3 sheets	✓	
PVA pre-treatment	✓	—

Accessories

SIBUKLE	Spatula A1
---------	------------

Special colors

On request



FR

LL LEGUAN Silver

2600 x 1000 / **NA** 12883 / **SA** 12893



FR

LL LEGUAN Gold

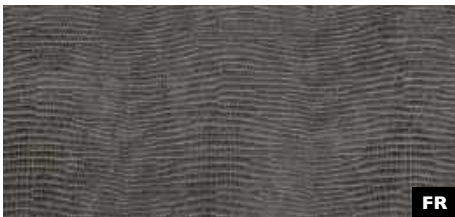
2600 x 1000 / **NA** 13480 / **SA** 13478



FR

LL LEGUAN Copper

2600 x 1000 / **NA** 12884 / **SA** 12894



FR

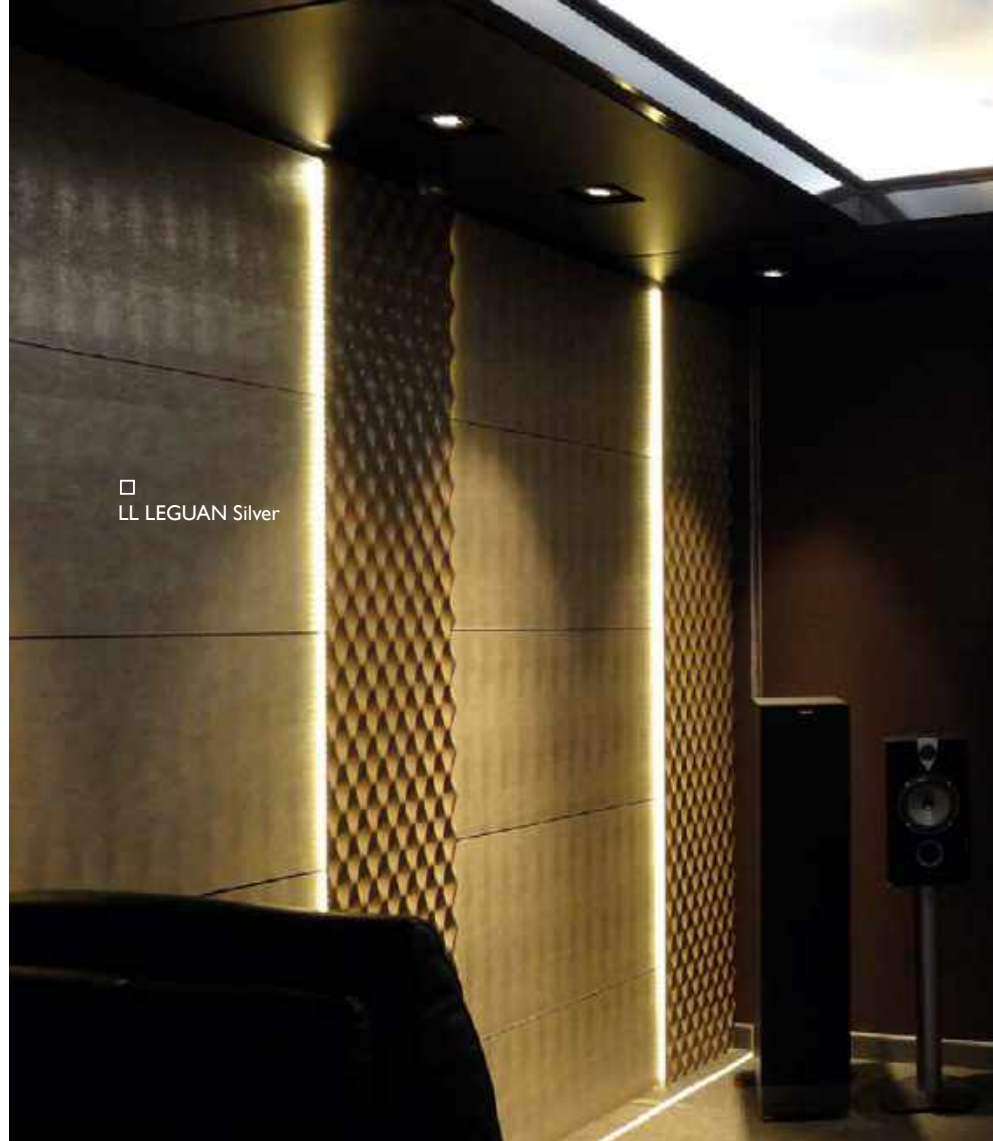
LL LEGUAN Nero

2600 x 1000 / **NA** 14778 / **SA** 14797

2600 x 1000



+ ▾



□ LL LEGUAN Silver

LEATHER-LINE

LL LEGUAN

Product characteristics

	NA	SA
Base material	HIPS	
Surface material	PU-leather	
Material thickness mm	1,5	1,63
Temperature stability	up to 60 °C	
Wet room suitability	■■■□	
Rolled packable *	✓	✓

* Design sheets to be rolled with the decor side outwardly (both – NA and SA version). We recommend rolling not more than 3 sheets per carton (480 x 480 mm).

Processing

	NA	SA
Cutting, punching	✓	✓
Drilling	✓	✓
Sawing	✓	—
Laser cutting	✓	✓
Hot bending	✓	—
PVA compressible	✓	—
Smallest bending radius	150 mm	150 mm

Extra equipment

	NA	SA
Special formats	On request	
Further thicknesses	✓	✓
Cuttings	✓	✓
Magnetic from 3 sheets	✓	
PVA pre-treatment	✓	—

Accessories

SIBUKLE	Spatula A1
---------	------------

Special colors

—



□
LL LEGUAN Bianco



LL LEGUAN Silk
2600 x 1000 / 1,5 mm / **NA** 16451 / **SA** 16452



LL LEGUAN Bianco
2600 x 1000 / 1,4 mm / **NA** 15609 / **SA** 15610

LEATHER-LINE

LL LEGUAN

2600 x 1000



Product characteristics

	NA	SA
Base material	HIPS	
Surface material	PU-leather	
Material thickness mm	1,4 / 1,5	1,53 / 1,63
Temperature stability	up to 60 °C	
Wet room suitability	Silk	■■■□
	Bianco	■■■■
Rolled packable *	✓	✓

* Design sheets to be rolled with the decor side outwardly (both – NA and SA version). We recommend rolling not more than 3 sheets per carton (480 x 480 mm).

Processing

	NA	SA
Cutting, punching	✓	✓
Drilling	✓	✓
Sawing	✓	—
Laser cutting	✓	✓
Hot bending	✓	—
PVA compressible	✓	—
Smallest bending radius	150 mm	150 mm

Extra equipment

	NA	SA
Special formats	On request	
Further thicknesses	✓	✓
Cuttings	✓	✓
Magnetic from 3 sheets	✓	
PVA pre-treatment	✓	—

Accessories

SIBUKLE	Spatula A1
---------	------------

Special colors

—



LL PERSIAN Gold

2600 x 1000 / **NA** 15656 / **SA** 15660



LL PERSIAN Metallic

2600 x 1000 / **NA** 15655 / **SA** 15659



□ LL PERSIAN Gold

2600 x 1000



LEATHER-LINE

LL PERSIAN

Product characteristics

	NA	SA
Base material	HIPS	
Surface material	PU-leather	
Material thickness mm	1,9	2,03
Temperature stability	up to 60 °C	
Wet room suitability	■■■□	
Rolled packable *	✓	✓

* Design sheets to be rolled with the decor side outwardly (both – NA and SA version). We recommend rolling not more than 3 sheets per carton (480 x 480 mm).

Processing

	NA	SA
Cutting, punching	✓	✓
Drilling	✓	✓
Sawing	✓	—
Laser cutting	✓	✓
Hot bending	✓	—
PVA compressible	✓	—
Smallest bending radius	150 mm	150 mm

Extra equipment

	NA	SA
Special formats	On request	
Further thicknesses	✓	✓
Cuttings	✓	✓
Magnetic from 3 sheets	✓	
PVA pre-treatment	✓	—

Accessories

SIBUKLE	Spatula A2
---------	------------

Special colors

—





Photo: © Kaupo Kikkas



LL PEARL RAY Gold
2600 x 1000 / **NA** 17015 / **SA** 17016

LEATHER-LINE

LL PEARL RAY

2600 x 1000

Product characteristics

	NA	SA
Base material	HIPS	
Surface material	PU-leather	
Material thickness mm	1,6	1,73
Temperature stability	up to 60 °C	
Wet room suitability	■■■■□	
Rolled packable *	✓	✓

* Design sheets to be rolled with the decor side outwardly (both – NA and SA version). We recommend rolling not more than 3 sheets per carton (480 x 480 mm).

Processing

	NA	SA
Cutting, punching	✓	✓
Drilling	✓	✓
Sawing	✓	—
Laser cutting	✓	✓
Hot bending	✓	—
PVA compressible	✓	—
Smallest bending radius	150 mm	150 mm

Extra equipment

	NA	SA
Special formats	On request	
Further thicknesses	✓	✓
Cuttings	✓	✓
Magnetic from 3 sheets	✓	
PVA pre-treatment	✓	—

Accessories

SIBUKLE	Spatula A1
---------	------------

Special colors

On request





LL FLORAL White
2600 x 1000 / **NA** 13470 / **SA** 13473



Photo: Wipro

2600 x 1000



LEATHER-LINE

LL FLORAL

Product characteristics

	NA	SA
Base material	HIPS	
Surface material	PU-leather	
Material thickness mm	2,1	2,23
Max. relief height mm	2,9	3,03
Temperature stability	up to 60 °C	
Wet room suitability	■■■■■	
Rolled packable *	✓	✓

* Design sheets to be rolled with the decor side outwardly (both – NA and SA version). We recommend rolling not more than 3 sheets per carton (480 x 480 mm).

Extra equipment

	NA	SA
Special formats	–	–
Further thicknesses	–	–
Cuttings	✓	✓
Magnetic from 3 sheets	✓	
PVA pre-treatment	✓	–

Processing

	NA	SA
Cutting, punching	✓	✓
Drilling	✓	✓
Sawing	✓	–
Laser cutting	✓	✓
Hot bending	✓	–
PVA compressible	✓	–
Smallest bending radius	150 mm	150 mm

Accessories

SIBUKLE	Spatula A2
---------	------------

Special colors

On request





□ LL FLORAL
VINTAGE Silver/Silver

Photo: GARANTline



LL FLORAL VINTAGE Silver/Silver
2600 x 1000 / **NA** I7266 / **SA** I7267



LL FLORAL White/Silver matt
2600 x 1000 / **NA** I3418 / **SA** I3414



LL FLORAL White/Gold matt
2600 x 1000 / **NA** I3419 / **SA** I3415



LL FLORAL Black/Silver matt
2600 x 1000 / **NA** I3416 / **SA** I3412

LEATHER-LINE

LL FLORAL

Product characteristics

	NA	SA
Base material	HIPS	
Surface material	PU-leather	
Material thickness mm	1,9	2,03
Max. relief height mm	2,9	3,03
Temperature stability	up to 60 °C	
Wet room suitability	■ ■ ■ □	
Rolled packable *	✓	✓

* Design sheets to be rolled with the decor side outwardly (both – NA and SA version). We recommend rolling not more than 3 sheets per carton (480 x 480 mm).

Extra equipment

	NA	SA
Special formats	–	–
Further thicknesses	–	–
Cuttings	✓	✓
Magnetic from 3 sheets	✓	
PVA pre-treatment	✓	–

Processing

	NA	SA
Cutting, punching	✓	✓
Drilling	✓	✓
Sawing	✓	–
Laser cutting	✓	✓
Hot bending	✓	–
PVA compressible	✓	–
Smallest bending radius	150 mm	150 mm

Accessories

SIBUKLE	Spatula A2
---------	------------

Special colors

On request

2600 x 1000



SIBUGLAS



SG CURVED Silver AR+
2600 x 1000 / **NA** 20177 / **SA** 20215



SG CURVED Gold AR+
2600 x 1000 / **NA** 20176 / **SA** 20214



SG CURVED Rose AR+
2600 x 1000 / **NA** 20178 / **SA** 20216



Photo: © istock.com

2600 x 1000



SIBUGLAS **scratch-resistant**

SG CURVED AR+

Product characteristics

	NA	SA
Base material	PMMA	
Surface material	PU-leather	
Material thickness mm	2,9	3,03
Temperature stability	up to 60 °C	
Wet room suitability	■■■■■	
Abrasion resistance	■■■■■■■	
Rolled packable	—	—

Processing

	NA	SA
Cutting, punching	—	—
Drilling	✓	✓
Sawing	✓	✓
Laser cutting	✓	✓
Hot bending	—	—
PVA compressible	✓	—
Smallest bending radius	1000 mm	

Extra equipment

	NA	SA
Special formats	On request	
Further thicknesses	✓	✓
Cuttings	✓	✓
Magnetic from 3 sheets*	✓	
PVA pre-treatment	—	—

Accessories

SIBUKLE	Spatula A2
---------	------------

Special colors

—

* Ground must be a SIBU metal foil SA (ref. 17637, self adhesive).



□ SG ALIGNED
Silver AR+

Photo: © istock.com



PR+

SG ALIGNED Silver AR+
2600 x 1000 / **NA** 20180 / **SA** 20219



PR+

SG ALIGNED Gold AR+
2600 x 1000 / **NA** 20179 / **SA** 20218



PR+

SG ALIGNED Rose AR+
2600 x 1000 / **NA** 20181 / **SA** 20217

SIBUGLAS **scratch-resistant**

SG ALIGNED AR+

2600 x 1000



Product characteristics

	NA	SA
Base material	PMMA	
Surface material	PU-leather	
Material thickness mm	2,9	3,03
Temperature stability	up to 60 °C	
Wet room suitability	■■■■■	
Abrasion resistance	■■■■■■■	
Rolled packable	—	—

Processing

	NA	SA
Cutting, punching	—	—
Drilling	✓	✓
Sawing	✓	✓
Laser cutting	✓	✓
Hot bending	—	—
PVA compressible	✓	—
Smallest bending radius	1000 mm	

Extra equipment

	NA	SA
Special formats	On request	
Further thicknesses	✓	✓
Cuttings	✓	✓
Magnetic from 3 sheets*	✓	
PVA pre-treatment	—	—

Accessories

SIBUKLE	Spatula A2
---------	------------

Special colors

—

* Ground must be a SIBU metal foil SA (ref. 17637, self adhesive).



SG GRID Silver AR+
2600 x 1000 / **NA** 20183 / **SA** 20222



SG GRID Gold AR+
2600 x 1000 / **NA** 20182 / **SA** 20221



SG GRID Rose AR+
2600 x 1000 / **NA** 20184 / **SA** 20220



□
SG GRID
Gold AR+

Photo: © istock.com

2600 x 1000



SIBUGLAS **scratch-resistant**

SG GRID AR+

Product characteristics

	NA	SA
Base material	PMMA	
Surface material	PU-leather	
Material thickness mm	2,9	3,03
Temperature stability	up to 60 °C	
Wet room suitability	■■■■■	
Abrasion resistance	■■■■■■■	
Rolled packable	—	—

Processing

	NA	SA
Cutting, punching	—	—
Drilling	✓	✓
Sawing	✓	✓
Laser cutting	✓	✓
Hot bending	—	—
PVA compressible	✓	—
Smallest bending radius	1000 mm	

Extra equipment

	NA	SA
Special formats	On request	
Further thicknesses	✓	✓
Cuttings	✓	✓
Magnetic from 3 sheets*	✓	
PVA pre-treatment	—	—

Accessories

SIBUKLE	Spatula A2
---------	------------

Special colors

—

* Ground must be a SIBU metal foil SA (ref. 17637, self adhesive).



□
SG GENESIS
Grey AR+

Photo: © istock.com



PR+

SG GENESIS Grey AR+
2600 x 1000 / **NA** 20185 / **SA** 20223

SIBUGLAS **scratch-resistant**

SG GENESIS Grey AR+

2600 x 1000

Product characteristics

	NA	SA
Surface material	PMMA	
Back side material	Paper	
Material thickness mm	2,3	2,43
Temperature stability	up to 60 °C	
Wet room suitability	■■■■	
Abrasion resistance	■■■■■■■■	
Rolled packable	—	—

Processing

	NA	SA
Cutting, punching	—	—
Drilling	✓	✓
Sawing (supported by a panel)	✓	✓
Laser cutting	✓	✓
Hot bending	—	—
PVA compressible	✓	—
Smallest bending radius	1000 mm	

Extra equipment

	NA	SA
Special formats	On request	
Further thicknesses	✓	✓
Cuttings	✓	✓
Magnetic from 3 sheets *	✓	
PVA pre-treatment	—	—

* Ground must be a SIBU metal foil SA (ref. 17637, self adhesive).

Accessories

SIBUKLE	Spatula A2
---------	------------

Special colors

—



+ ▼



PR+

SG MARBLE Brown AR+
2600 x 1000 / **NA** 19331 / **SA** 19342



□ SG MARBLE Brown AR+

Photo: © istock.com

2600 x 1000



SIBUGLAS **scratch-resistant**

SG MARBLE Brown AR+

Product characteristics

	NA	SA
Surface material	PMMA	
Back side material	Paper	
Material thickness mm	2,3	2,43
Temperature stability	up to 60 °C	
Wet room suitability	■■■■■	
Abrasion resistance	■■■■■■■	
Rolled packable	—	—

Processing

	NA	SA
Cutting, punching	—	—
Drilling	✓	✓
Sawing (supported by a panel)	✓	✓
Laser cutting	✓	✓
Hot bending	—	—
PVA compressible	✓	—
Smallest bending radius	1000 mm	1000 mm

Extra equipment

	NA	SA
Special formats	On request	
Further thicknesses	✓	✓
Cuttings	✓	✓
Magnetic from 3 sheets *	✓	
PVA pre-treatment	—	—

* Ground must be a SIBU metal foil SA (ref. 17637, self adhesive).

Accessories

SIBUKLE	Spatula A2
---------	------------

Special colors

—

+ ▾



□ SG MARBLE Alpine AR+

Photo: © fotolia.com



PR+

SG MARBLE Alpine AR+
2600 x 1000 / **NA** 19329 / **SA** 19340

SIBUGLAS **scratch-resistant**

SG MARBLE Alpine AR+

2600 x 1000

Product characteristics

	NA	SA
Surface material	PMMA	
Back side material	Paper	
Material thickness mm	2,3	2,43
Temperature stability	up to 60 °C	
Wet room suitability	■■■■	
Abrasion resistance	■■■■■■■■	
Rolled packable	—	—

Processing

	NA	SA
Cutting, punching	—	—
Drilling	✓	✓
Sawing (supported by a panel)	✓	✓
Laser cutting	✓	✓
Hot bending	—	—
PVA compressible	✓	—
Smallest bending radius	1000 mm	1000 mm

Extra equipment

	NA	SA
Special formats	On request	
Further thicknesses	✓	✓
Cuttings	✓	✓
Magnetic from 3 sheets *	✓	
PVA pre-treatment	—	—

* Ground must be a SIBU metal foil SA (ref. 17637, self adhesive).

Accessories

SIBUKLE	Spatula A2
---------	------------

Special colors

—

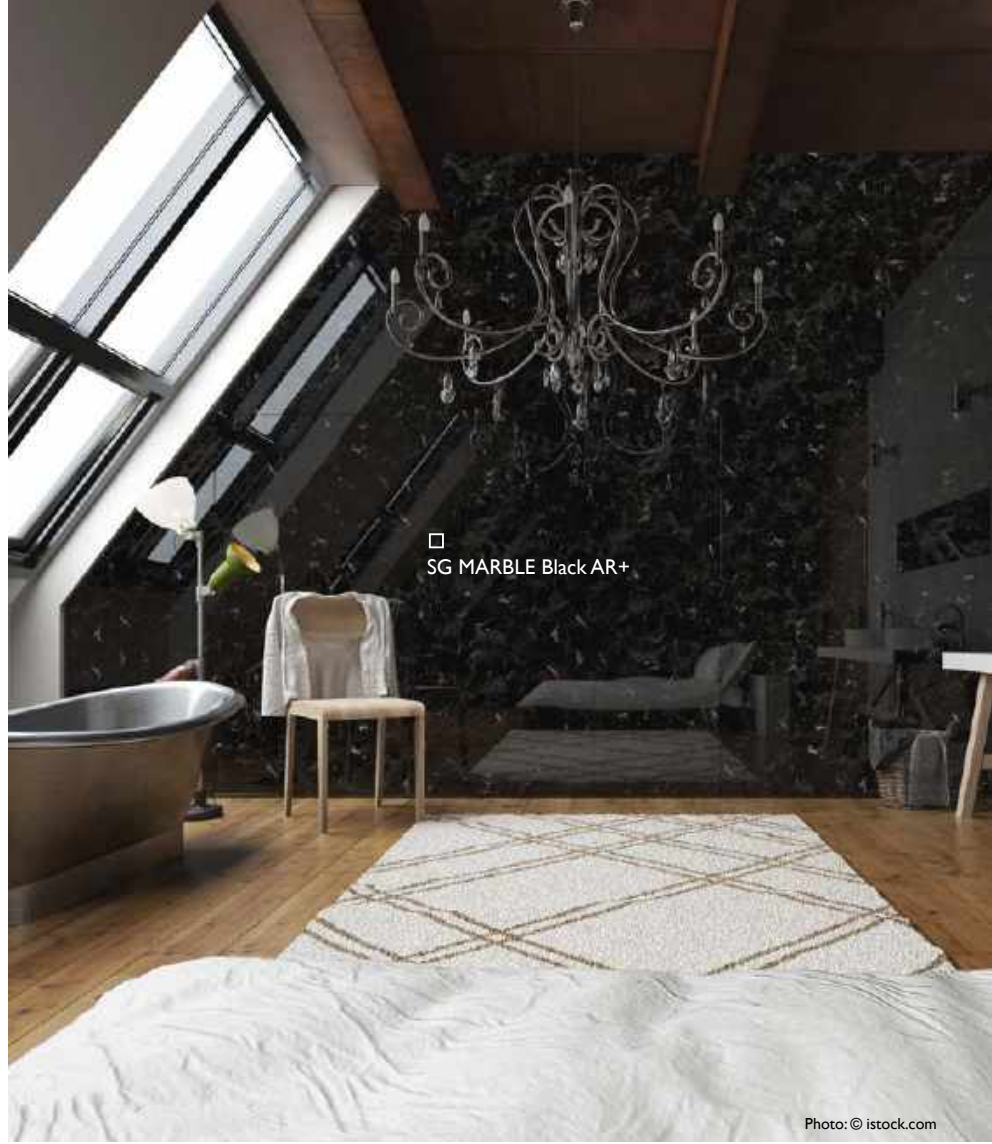


+ ▼



PR+

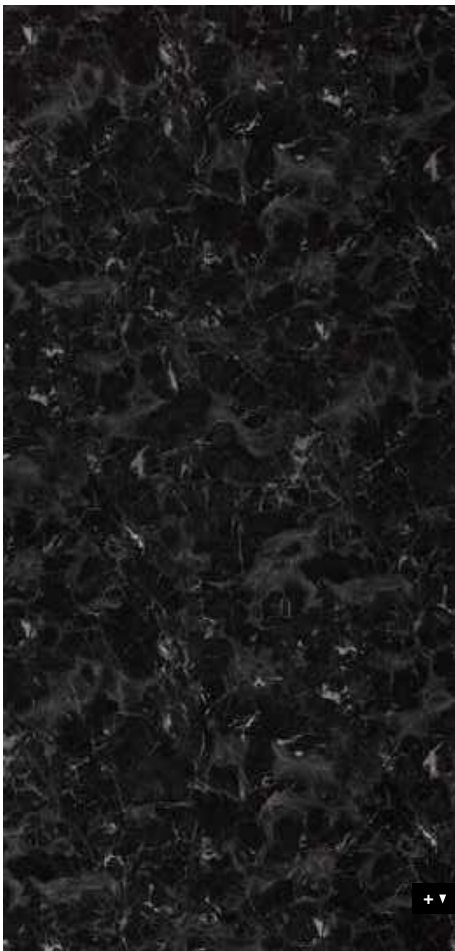
SG MARBLE Black AR+
2600 x 1000 / **NA** 19330 / **SA** 19341



□ SG MARBLE Black AR+

Photo: © istock.com

2600 x 1000



+ ▾

SIBUGLAS **scratch-resistant**

SG MARBLE Black AR+

Product characteristics

	NA	SA
Surface material	PMMA	
Back side material	Paper	
Material thickness mm	2,3	2,43
Temperature stability	up to 60 °C	
Wet room suitability	■■■■■	
Abrasion resistance	■■■■■■■	
Rolled packable	—	—

Processing

	NA	SA
Cutting, punching	—	—
Drilling	✓	✓
Sawing (supported by a panel)	✓	✓
Laser cutting	✓	✓
Hot bending	—	—
PVA compressible	✓	—
Smallest bending radius	1000 mm	1000 mm

Extra equipment

	NA	SA
Special formats	On request	
Further thicknesses	✓	✓
Cuttings	✓	✓
Magnetic from 3 sheets *	✓	
PVA pre-treatment	—	—

* Ground must be a SIBU metal foil SA (ref. 17637, self adhesive).

Accessories

SIBUKLE	Spatula A2
---------	------------

Special colors

—



Photo: © fotolia.com



PR+

SG MARBLE White AR+
2600 x 1000 / **NA** 19334 / **SA** 19345

SIBUGLAS **scratch-resistant**

SG MARBLE White AR+

2600 x 1000

Product characteristics

	NA	SA
Surface material	PMMA	
Back side material	Paper	
Material thickness mm	2,3	2,43
Temperature stability	up to 60 °C	
Wet room suitability	■■■■	
Abrasion resistance	■■■■■■■■	
Rolled packable	—	—

Processing

	NA	SA
Cutting, punching	—	—
Drilling	✓	✓
Sawing (supported by a panel)	✓	✓
Laser cutting	✓	✓
Hot bending	—	—
PVA compressible	✓	—
Smallest bending radius	1000 mm	1000 mm

Extra equipment

	NA	SA
Special formats	On request	
Further thicknesses	✓	✓
Cuttings	✓	✓
Magnetic from 3 sheets *	✓	
PVA pre-treatment	—	—

* Ground must be a SIBU metal foil SA (ref. 17637, self adhesive).

Accessories

SIBUKLE	Spatula A2
---------	------------

Special colors

—





PR+

SG MARBLE Grey AR+
2600 x 1000 / **NA** 19333 / **SA** 19344



□ SG MARBLE Grey AR+

Photo: © shutterstock.com

2600 x 1000



SIBUGLAS **scratch-resistant**

SG MARBLE Grey AR+

Product characteristics

	NA	SA
Surface material	PMMA	
Back side material	Paper	
Material thickness mm	2,3	2,43
Temperature stability	up to 60 °C	
Wet room suitability	■■■■	
Abrasion resistance	■■■■■■■	
Rolled packable	—	—

Processing

	NA	SA
Cutting, punching	—	—
Drilling	✓	✓
Sawing (supported by a panel)	✓	✓
Laser cutting	✓	✓
Hot bending	—	—
PVA compressible	✓	—
Smallest bending radius	1000 mm	1000 mm

Extra equipment

	NA	SA
Special formats	On request	
Further thicknesses	✓	✓
Cuttings	✓	✓
Magnetic from 3 sheets *	✓	
PVA pre-treatment	—	—

* Ground must be a SIBU metal foil SA (ref. 17637, self adhesive).

Accessories

SIBUKLE	Spatula A2
---------	------------

Special colors

—

+ ▼



□ SG MARBLE Emperador AR+

Photo: © istock.com



SG MARBLE Emperador AR+
2600 x 1000 / **NA** I9332 / **SA** I9343

SIBUGLAS **scratch-resistant**

SG MARBLE Emperador AR+

2600 x 1000

Product characteristics

	NA	SA
Surface material	PMMA	
Back side material	Paper	
Material thickness mm	2,3	2,43
Temperature stability	up to 60 °C	
Wet room suitability	■■■■	
Abrasion resistance	■■■■■■■■	
Rolled packable	—	—

Processing

	NA	SA
Cutting, punching	—	—
Drilling	✓	✓
Sawing (supported by a panel)	✓	✓
Laser cutting	✓	✓
Hot bending	—	—
PVA compressible	✓	—
Smallest bending radius	1000 mm	1000 mm

Extra equipment

	NA	SA
Special formats	On request	
Further thicknesses	✓	✓
Cuttings	✓	✓
Magnetic from 3 sheets *	✓	
PVA pre-treatment	—	—

* Ground must be a SIBU metal foil SA (ref. I7637, self adhesive).

Accessories

SIBUKLE	Spatula A2
---------	------------

Special colors

—





SG LEGUAN Bianco met AR+
2600 x 1000 / **NA** 19304 / **SA** 19305



SG LEGUAN Silver AR+
2600 x 1000 / **NA** 16975 / **SA** 16979



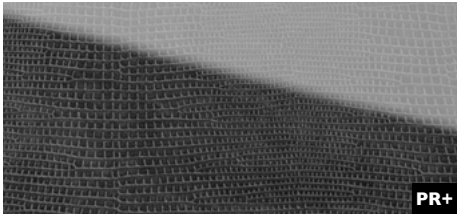
SG LEGUAN Silk AR+
2600 x 1000 / **NA** 20275 / **SA** 20276



SG LEGUAN Gold AR+
2600 x 1000 / **NA** 16977 / **SA** 16982



SG LEGUAN Copper AR+
2600 x 1000 / **NA** 16976 / **SA** 16981



SG LEGUAN Nero AR+
2600 x 1000 / **NA** 18089 / **SA** 18095



□ SG LEGUAN Nero AR+

SIBUGLAS **scratch-resistant**

SG LEGUAN AR+

Product characteristics

	NA	SA
Surface material	PMMA	
Back side material	PU-leather	
Material thickness mm	2,8	2,93
Temperature stability	up to 60 °C	
Wet room suitability	■■■■■	
Abrasion resistance	■■■■■■■	
Rolled packable	—	—

Processing

	NA	SA
Cutting, punching	—	—
Drilling	✓	✓
Sawing (supported by a panel)	✓	✓
Laser cutting	✓	✓
Hot bending	—	—
PVA compressible	✓	—
Smallest bending radius	1000 mm	1000 mm

Extra equipment

	NA	SA
Special formats	On request	
Further thicknesses	✓	✓
Cuttings	✓	✓
Magnetic from 3 sheets *	✓	
PVA pre-treatment	—	—

Accessories

SIBUKLE	Spatula A2
---------	------------

Special colors

On request

* Ground must be real metal or a SIBU metal foil SA (ref. 17637, self adhesive).



□ SG VINTAGE Copper AR+



SG VINTAGE Silver AR+
2600 x 1000 / **NA** 17197 / **SA** 17199



SG VINTAGE Copper AR+
2600 x 1000 / **NA** 17198 / **SA** 17200

Photo: © tamix | I15 - fotolia.com

SIBUGLAS scratch-resistant

SG VINTAGE AR+

2600 x 1000



Product characteristics

	NA	SA
Surface material	PMMA	
Back side material	PU-leather	
Material thickness mm	2,8	2,93
Temperature stability	up to 60 °C	
Wet room suitability	■■■■	
Abrasion resistance	■■■■■■■■	
Rolled packable	—	—

Processing

	NA	SA
Cutting, punching	—	—
Drilling	✓	✓
Sawing (supported by a panel)	✓	✓
Laser cutting	✓	✓
Hot bending	—	—
PVA compressible	✓	—
Smallest bending radius	1000 mm	1000 mm

Extra equipment

	NA	SA
Special formats	On request	
Further thicknesses	✓	✓
Cuttings	✓	✓
Magnetic from 3 sheets *	✓	
PVA pre-treatment	—	—

Accessories

SIBUKLE	Spatula A2
---------	------------

Special colors

—

* Ground must be real metal or a SIBU metal foil SA (ref. 17637, self adhesive).





PR+

SG LUXURY Gold AR+
2600 x 1000 / **NA** 17819 / **SA** 17840



PR+

SG LUXURY Bronze AR+
2600 x 1000 / **NA** 17820 / **SA** 17841



□ SG LUXURY Gold AR+

2600 x 1000



+ ▾

SIBUGLAS **scratch-resistant**

SG LUXURY AR+

Product characteristics

	NA	SA
Surface material	PMMA	
Back side material	PU-leather	
Material thickness mm	3,1	3,23
Temperature stability	up to 60 °C	
Wet room suitability	■■■■■	
Abrasion resistance	■■■■■■■	
Rolled packable	—	—

Processing

	NA	SA
Cutting, punching	—	—
Drilling	✓	✓
Sawing (supported by a panel)	✓	✓
Laser cutting	✓	✓
Hot bending	—	—
PVA compressible	✓	—
Smallest bending radius	1000 mm	1000 mm

Extra equipment

	NA	SA
Special formats	On request	
Further thicknesses	✓	✓
Cuttings	✓	✓
Magnetic from 3 sheets *	✓	
PVA pre-treatment	—	—

Accessories

SIBUKLE	Spatula A2
---------	------------

Special colors

On request

* Ground must be real metal or a SIBU metal foil SA (ref. 17637, self adhesive).



□ SG OLD Platin AR+



PR+

SG OLD Platin AR+
2600 x 1000 / **NA** 18067 / **SA** 18001

SIBUGLAS scratch-resistant

SG OLD Platin AR+

2600 x 1000



Product characteristics

	NA	SA
Surface material	PMMA	
Back side material	PU-leather	
Material thickness mm	3,1	3,23
Temperature stability	up to 60 °C	
Wet room suitability	■■■■■	
Abrasion resistance	■■■■■■■	
Rolled packable	—	—

Processing

	NA	SA
Cutting, punching	—	—
Drilling	✓	✓
Sawing (supported by a panel)	✓	✓
Laser cutting	✓	✓
Hot bending	—	—
PVA compressible	✓	—
Smallest bending radius	1000 mm	1000 mm

Extra equipment

	NA	SA
Special formats	On request	
Further thicknesses	✓	✓
Cuttings	✓	✓
Magnetic from 3 sheets *	✓	
PVA pre-treatment	—	—

Accessories

SIBUKLE	Spatula A2
---------	------------

Special colors

—

* Ground must be real metal or a SIBU metal foil SA (ref. 17637, self adhesive).

+ ▼

WOOD- LINE



PRS*

WL Carbonized Wood
2600 x 1000 / **NA** 20157 / **SA** 20224



□
WL Carbonized Wood

Photo: © fotolia.com

2600 x 1000



WOOD-LINE

WL Carbonized Wood

Product characteristics

	NA	SA
Base material	HIPS	
Surface material	impregnated paper	
Material thickness mm	1,3	1,43
Temperature stability	up to 60 °C	
Wet room suitability	■■■□	
Abrasion resistance	■■■■□□	
Rolled packable **	✓	✓

Processing

	NA	SA
Cutting, punching	✓	✓
Drilling	✓	✓
Sawing, milling	✓	—
Laser cutting	✓	✓
Hot bending	✓	—
Thermoforming	—	—
PVA compressible	✓	—
Smallest bending radius	150 mm	

Extra equipment

	NA	SA
Special formats	On request	
Further thicknesses	✓	✓
Cuttings	✓	✓
Magnetic from 3 sheets™	✓	
PVA pre-treatment	✓	—

Accessories

SIBUKLE	Spatula A1
---------	------------

Special colors

—



PRS*

WL Wenge Wood
2600 x 1000 / **NA** 19016 / **SA** 19027

WOOD-LINE

WL Wenge Wood

2600 x 1000

Product characteristics

	NA	SA
Base material	HIPS	
Surface material	impregnated paper	
Material thickness mm	1,2	1,33
Temperature stability	up to 60 °C	
Wet room suitability	■■■■□	
Abrasion resistance	■■■■□□□	
Rolled packable **	✓	✓

Processing

	NA	SA
Cutting, punching	✓	✓
Drilling	✓	✓
Sawing, milling	✓	—
Laser cutting	✓	✓
Hot bending	✓	—
Thermoforming	—	—
PVA compressible	✓	—
Smallest bending radius	150 mm	150 mm

Extra equipment

	NA	SA
Special formats	On request	
Further thicknesses	✓	✓
Cuttings	✓	✓
Magnetic from 3 sheets	✓	
PVA pre-treatment	✓	—

Accessories

SIBUKLE	Spatula A I
---------	-------------

Special colors

—

* Prior to printing a corona or plasma treatment has to be carried out.
Upon request available in pre-treated version.

** Design sheets are to be rolled with the patterned side on the inside
(applies for both the NA and SA versions). We recommend that not more than
3 sheets be rolled per carton (480 x 480 mm).



PRS*

WL Maple Alpine

2600 x 1000 / **NA** I9018 / **SA** I9029



□ WL Maple Alpine

Photo: © iStock.com

2600 x 1000



WOOD-LINE

WL Maple Alpine

Product characteristics

	NA	SA
Base material	HIPS	
Surface material	impregnated paper	
Material thickness mm	1,3	1,43
Temperature stability	up to 60 °C	
Wet room suitability	■■■■□	
Abrasion resistance	■■■■■□□	
Rolled packable **	✓	✓

Processing

	NA	SA
Cutting, punching	✓	✓
Drilling	✓	✓
Sawing, milling	✓	—
Laser cutting	✓	✓
Hot bending	✓	—
Thermoforming	—	—
PVA compressible	✓	—
Smallest bending radius	150 mm	150 mm

Extra equipment

	NA	SA
Special formats	On request	
Further thicknesses	✓	✓
Cuttings	✓	✓
Magnetic from 3 sheets	✓	
PVA pre-treatment	✓	—

Accessories

SIBUKLE	Spatula A1
---------	------------

Special colors

—

+ ▼

* Prior to printing a corona or plasma treatment has to be carried out. Upon request available in pre-treated version.

** Design sheets are to be rolled with the patterned side on the inside (applies for both the NA and SA versions). We recommend that not more than 3 sheets be rolled per carton (480 x 480 mm).



□
WL Nutwood



PRS*

WL Nutwood
2600 x 1000 / **NA** 19019 / **SA** 19030

WOOD-LINE

WL Nutwood

2600 x 1000

Product characteristics

	NA	SA
Base material	HIPS	
Surface material	impregnated paper	
Material thickness mm	1,3	1,43
Temperature stability	up to 60 °C	
Wet room suitability	■■■■□	
Abrasion resistance	■■■■□□	
Rolled packable **	✓	✓

Processing

	NA	SA
Cutting, punching	✓	✓
Drilling	✓	✓
Sawing, milling	✓	—
Laser cutting	✓	✓
Hot bending	✓	—
Thermoforming	—	—
PVA compressible	✓	—
Smallest bending radius	150 mm	150 mm

Extra equipment

	NA	SA
Special formats	On request	
Further thicknesses	✓	✓
Cuttings	✓	✓
Magnetic from 3 sheets	✓	
PVA pre-treatment	✓	—

Accessories

SIBUKLE	Spatula A1
---------	------------

Special colors

—

* Prior to printing a corona or plasma treatment has to be carried out.
Upon request available in pre-treated version.

** Design sheets are to be rolled with the patterned side on the inside
(applies for both the NA and SA versions). We recommend that not more
than 3 sheets be rolled per carton (480 x 480 mm).



PRS*

WL Nutwood Country
2600 x 1000 / **NA** I9017 / **SA** I9028



□
WL Nutwood Country

Photo: © Katarzyna Bialasiewicz

2600 x 1000



WOOD-LINE

WL Nutwood Country

Product characteristics

	NA	SA
Base material	HIPS	
Surface material	impregnated paper	
Material thickness mm	1,3	1,43
Temperature stability	up to 60 °C	
Wet room suitability	■■■■□	
Abrasion resistance	■■■■□□	
Rolled packable **	✓	✓

Processing

	NA	SA
Cutting, punching	✓	✓
Drilling	✓	✓
Sawing, milling	✓	—
Laser cutting	✓	✓
Hot bending	✓	—
Thermoforming	—	—
PVA compressible	✓	—
Smallest bending radius	150 mm	150 mm

Extra equipment

	NA	SA
Special formats	On request	
Further thicknesses	✓	✓
Cuttings	✓	✓
Magnetic from 3 sheets	✓	
PVA pre-treatment	✓	—

Accessories

SIBUKLE	Spatula AI
---------	------------

Special colors

—

* Prior to printing a corona or plasma treatment has to be carried out. Upon request available in pre-treated version.

** Design sheets are to be rolled with the patterned side on the inside (applies for both the NA and SA versions). We recommend that not more than 3 sheets be rolled per carton (480 x 480 mm).



□
WL Nutwood Country

DECO- LINE



FR
PR+

DM OXIDIZED Silver AR
2600 x 1000 / **NA** 20139 / **SA** 20187



FR
PR+

DM OXIDIZED Autumn AR
2600 x 1000 / **NA** 20143 / **SA** 20191



FR
PR+

DM OXIDIZED Copper AR
2600 x 1000 / **NA** 20138 / **SA** 20186



FR
PR+

DM OXIDIZED Nickel AR
2600 x 1000 / **NA** 20140 / **SA** 20188



FR
PR+

DM OXIDIZED Platin AR
2600 x 1000 / **NA** 20141 / **SA** 20189



FR
PR+

DM OXIDIZED Titan AR
2600 x 1000 / **NA** 20142 / **SA** 20190

2600 x 1000



+ ▼



□
DM OXIDIZED
Silver AR

□
DM OXIDIZED
Platin AR

□
DM OXIDIZED
Titan AR

Photo: © istock.com

DECO-LINE abrasion-resistant

DM OXIDIZED AR

Product characteristics

	NA	SA
Base material	HIPS	
Surface material	Print	
Material thickness mm	1,0	1,13
Temperature stability	up to 60 °C	
Wet room suitability	■■■■□	
Abrasion resistance	■■■■■■■	
Rolled packable	✓	✓

Processing

	NA	SA
Cutting, punching	✓	✓
Drilling	✓	✓
Sawing, milling	✓	—
Laser cutting	✓	✓
Hot bending	—	—
Thermoforming	—	—
PVA compressible	✓	—
Smallest bending radius	150 mm	

Extra equipment

	NA	SA
Special formats	On request	
Further thicknesses	✓	✓
Cuttings	✓	✓
Magnetic from 3 sheets *	✓	
PVA pre-treatment	✓	—

* Ground must be a SIBU metal foil SA (ref. 17637, self adhesive).

Accessories

SIBUKLE	Spatula Al
---------	------------

Special colors

—



Photo: © istock.com



DM SLIGHTLY USED Gold AR
2600 x 1000 / **NA** 20153 / **SA** 20201



DM SLIGHTLY USED Bronze AR
2600 x 1000 / **NA** 20152 / **SA** 20200



DM SLIGHTLY USED Copper AR
2600 x 1000 / **NA** 20151 / **SA** 20199



DM SLIGHTLY USED Titan AR
2600 x 1000 / **NA** 20154 / **SA** 20202

DECO-LINE abrasion-resistant

DM SLIGHTLY USED AR

2600 x 1000



Product characteristics

	NA	SA
Base material	HIPS	
Surface material	Print	
Material thickness mm	1,0	1,13
Temperature stability	up to 60 °C	
Wet room suitability	■■■■□	
Abrasion resistance	■■■■■■■	
Rolled packable	✓	✓

Processing

	NA	SA
Cutting, punching	✓	✓
Drilling	✓	✓
Sawing, milling	✓	—
Laser cutting	✓	✓
Hot bending	—	—
Thermoforming	—	—
PVA compressible	✓	—
Smallest bending radius	150 mm	

Extra equipment

	NA	SA
Special formats	On request	
Further thicknesses	✓	✓
Cuttings	✓	✓
Magnetic from 3 sheets *	✓	
PVA pre-treatment	✓	—

Accessories

SIBUKLE	Spatula A1
---------	------------

Special colors

—

* Ground must be a SIBU metal foil SA (ref. 17637, self adhesive).



FR
PR+

DM METALLIC USED Champagne AR
2600 x 1000 / NA 20150 / SA 20198



FR
PR+

DM METALLIC USED Silver AR
2600 x 1000 / NA 20145 / SA 20193



FR
PR+

DM METALLIC USED Titan AR
2600 x 1000 / NA 20144 / SA 20192



Photo: © istock.com

2600 x 1000



+ ▾

DECO-LINE abrasion-resistant

DM METALLIC USED AR

Product characteristics

	NA	SA
Base material	HIPS	
Surface material	Print	
Material thickness mm	1,0	1,13
Temperature stability	up to 60 °C	
Wet room suitability	■■■■□	
Abrasion resistance	■■■■■■■	
Rolled packable	✓	✓

Processing

	NA	SA
Cutting, punching	✓	✓
Drilling	✓	✓
Sawing, milling	✓	—
Laser cutting	✓	✓
Hot bending	—	—
Thermoforming	—	—
PVA compressible	✓	—
Smallest bending radius	150 mm	

Extra equipment

	NA	SA
Special formats	On request	
Further thicknesses	✓	✓
Cuttings	✓	✓
Magnetic from 3 sheets *	✓	
PVA pre-treatment	✓	—

Accessories

SIBUKLE	Spatula AI
---------	------------

Special colors

—

* Ground must be a SIBU metal foil SA (ref. 17637, self adhesive).



DM METALLIC USED Ivory AR
2600 x 1000 / **NA** 20149 / **SA** 20197



DM METALLIC USED Sand AR
2600 x 1000 / **NA** 20147 / **SA** 20195



DM METALLIC USED Bronze AR
2600 x 1000 / **NA** 20146 / **SA** 20194



DM METALLIC USED Steel AR
2600 x 1000 / **NA** 20148 / **SA** 20196

DECO-LINE abrasion-resistant

DM METALLIC USED AR

Product characteristics

	NA	SA
Base material	HIPS	
Surface material	Print	
Material thickness mm	1,0	1,13
Temperature stability	up to 60 °C	
Wet room suitability	■■■■□	
Abrasion resistance	■■■■■■■	
Rolled packable	✓	✓

Processing

	NA	SA
Cutting, punching	✓	✓
Drilling	✓	✓
Sawing, milling	✓	—
Laser cutting	✓	✓
Hot bending	—	—
Thermoforming	—	—
PVA compressible	✓	—
Smallest bending radius	150 mm	

Extra equipment

	NA	SA
Special formats	On request	
Further thicknesses	✓	✓
Cuttings	✓	✓
Magnetic from 3 sheets *	✓	
PVA pre-treatment	✓	—

Accessories

SIBUKLE	Spatula A1
---------	------------

Special colors

—

* Ground must be a SIBU metal foil SA (ref. 17637, self adhesive).

2600 x 1000





FR
PR+

DM REFINED METAL Silver AR
2600 x 1000 / **NA** 20155 / **SA** 20203



FR
PR+

DM REFINED METAL Titan AR
2600 x 1000 / **NA** 20156 / **SA** 20204

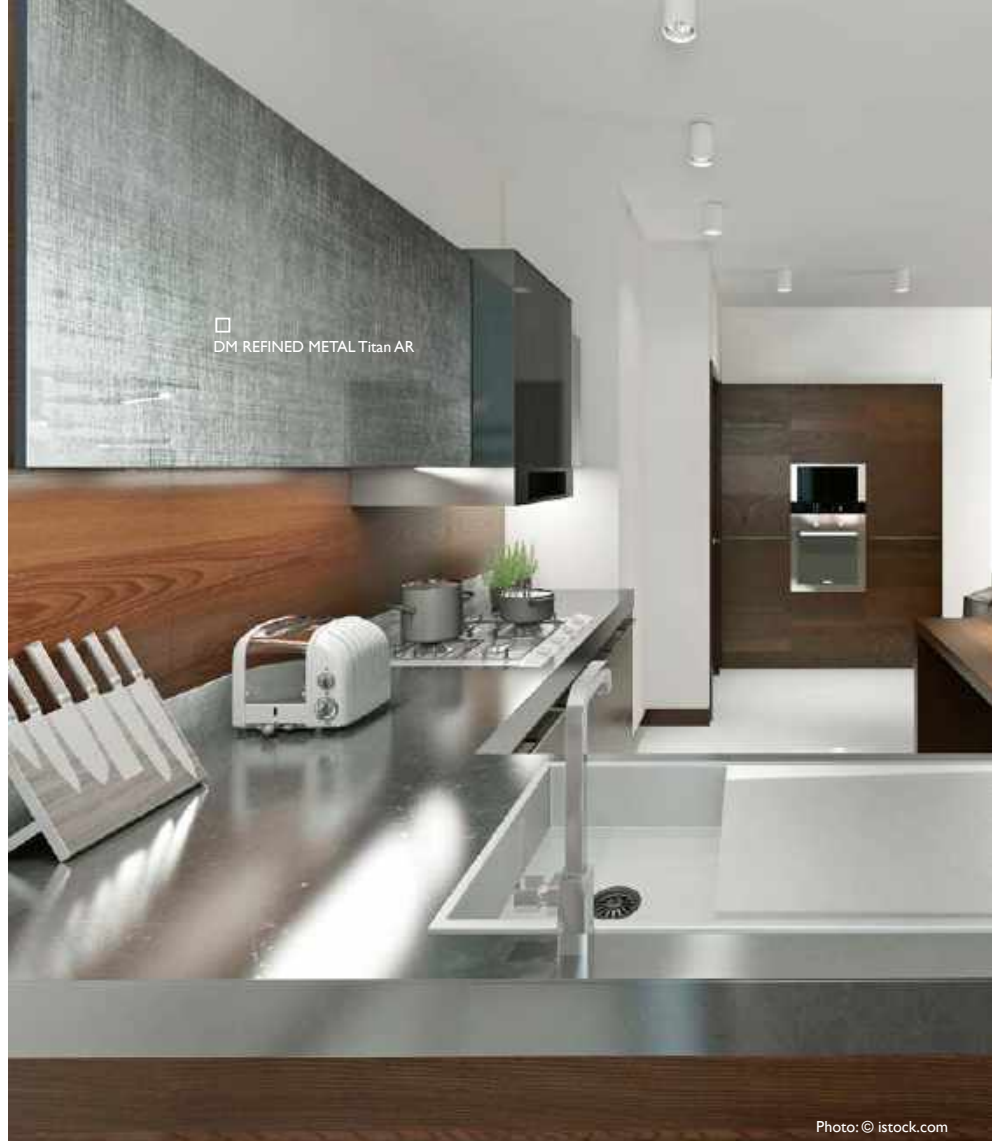


Photo: © istock.com

2600 x 1000

DECO-LINE abrasion-resistant

DM REFINED METAL AR

Product characteristics

	NA	SA
Base material	HIPS	
Surface material	Print	
Material thickness mm	1,0	1,13
Temperature stability	up to 60 °C	
Wet room suitability	■■■■□	
Abrasion resistance	■■■■■■■	
Rolled packable	✓	✓

Processing

	NA	SA
Cutting, punching	✓	✓
Drilling	✓	✓
Sawing, milling	✓	—
Laser cutting	✓	✓
Hot bending	—	—
Thermoforming	—	—
PVA compressible	✓	—
Smallest bending radius	150 mm	

Extra equipment

	NA	SA
Special formats	On request	
Further thicknesses	✓	✓
Cuttings	✓	✓
Magnetic from 3 sheets *	✓	
PVA pre-treatment	✓	—

* Ground must be a SIBU metal foil SA (ref. 17637, self adhesive).

Accessories

SIBUKLE	Spatula Al
---------	------------

Special colors

—

+ ▼



□
DM SILENT Gold AR



FR
PR+

DM SILENT Gold AR
2600 x 1000 / **NA** 19200 / **SA** 19208

DECO-LINE abrasion-resistant

DM SILENT Gold AR

2600 x 1000



Product characteristics

	NA	SA
Base material	HIPS	
Surface material	Print	
Material thickness mm	1,0	1,13
Temperature stability	up to 60 °C	
Wet room suitability	■■■■□	
Abrasion resistance	■■■■■■■	
Rolled packable	✓	✓

Processing

	NA	SA
Cutting, punching	✓	✓
Drilling	✓	✓
Sawing, milling	✓	—
Laser cutting	✓	✓
Hot bending	—	—
Thermoforming	—	—
PVA compressible	✓	—
Smallest bending radius	150 mm	150 mm

Extra equipment

	NA	SA
Special formats	On request	
Further thicknesses	✓	✓
Cuttings	✓	✓
Magnetic from 3 sheets *	✓	
PVA pre-treatment	✓	—

Accessories

SIBUKLE	Spatula A1
---------	------------

Special colors

—

* Ground must be a SIBU metal foil SA (ref. 17637, self adhesive).





FR
PR+

DM Iron Age AR
2600 x 1000 / **NA** 19201 / **SA** 19209



Photo: © fotolia.com

2600 x 1000



DECO-LINE abrasion-resistant

DM Iron Age AR

Product characteristics

	NA	SA
Base material	HIPS	
Surface material	Print	
Material thickness mm	1,0	1,13
Temperature stability	up to 60 °C	
Wet room suitability	■■■□	
Abrasion resistance	■■■■■■■	
Rolled packable	✓	✓

Processing

	NA	SA
Cutting, punching	✓	✓
Drilling	✓	✓
Sawing, milling	✓	—
Laser cutting	✓	✓
Hot bending	—	—
Thermoforming	—	—
PVA compressible	✓	—
Smallest bending radius	150 mm	150 mm

Extra equipment

	NA	SA
Special formats	On request	
Further thicknesses	✓	✓
Cuttings	✓	✓
Magnetic from 3 sheets *	✓	
PVA pre-treatment	✓	—

* Ground must be a SIBU metal foil SA (ref. 17637, self adhesive).

Accessories

SIBUKLE	Spatula AI
---------	------------

Special colors

—

+ ▼



Photo: © fotolia.com



DM CLASSY Silver AR
2600 x 1000 / **NA** 19326 / **SA** 19337



DM CLASSY Bronze AR
2600 x 1000 / **NA** 19011 / **SA** 19022



DM CLASSY Copper AR
2600 x 1000 / **NA** 19199 / **SA** 19207



DM CLASSY Gold AR
2600 x 1000 / **NA** 19010 / **SA** 19021



DM CLASSY Black AR
2600 x 1000 / **NA** 19325 / **SA** 19336

2600 x 1000



DECO-LINE abrasion-resistant

DM CLASSY AR

Product characteristics

	NA	SA
Base material	HIPS	
Surface material	Print	
Material thickness mm	1,0	1,13
Temperature stability	up to 60 °C	
Wet room suitability	■■■■□	
Abrasion resistance	■■■■■■■	
Rolled packable	✓	✓

Processing

	NA	SA
Cutting, punching	✓	✓
Drilling	✓	✓
Sawing, milling	✓	—
Laser cutting	✓	✓
Hot bending	—	—
Thermoforming	—	—
PVA compressible	✓	—
Smallest bending radius	150 mm	150 mm

Extra equipment

	NA	SA
Special formats	On request	
Further thicknesses	✓	✓
Cuttings	✓	✓
Magnetic from 3 sheets *	✓	
PVA pre-treatment	✓	—

* Ground must be a SIBU metal foil SA (ref. 17637, self adhesive).

Accessories

SIBUKLE	Spatula A1
---------	------------

Special colors

—



FR
PR+

DM LUXURY Silver AR
2600 x 1000 / **NA** 21495 / **SA** 21497



FR
PR+

DM LUXURY Bronze AR
2600 x 1000 / **NA** 21487 / **SA** 21488



FR
PR+

DM LUXURY Gold AR
2600 x 1000 / **NA** 21391 / **SA** 21392



□
DM LUXURY Bronze AR

2600 x 1000



+ ▾

DECO-LINE

DM LUXURY AR

Product characteristics

	NA	SA
Base material	HIPS	
Surface material	Print	
Material thickness mm	1,0	1,13
Temperature stability	up to 60 °C	
Wet room suitability	■■■□	
Abrasion resistance	■■■■■■■	
Rolled packable	✓	✓

Processing

	NA	SA
Cutting, punching	✓	✓
Drilling	✓	✓
Sawing, milling	✓	—
Laser cutting	✓	✓
Hot bending	—	—
Thermoforming	—	—
PVA compressible	✓	—
Smallest bending radius	150 mm	150 mm

Extra equipment

	NA	SA
Special formats	On request	
Further thicknesses	✓	✓
Cuttings	✓	✓
Magnetic from 3 sheets	✓	
PVA pre-treatment	✓	—

Accessories

SIBUKLE	Spatula A1
---------	------------

Special colors

—



□ DM MONSOON VINTAGE Brown



PRS

DM MONSOON VINTAGE Brown
2600 x 1000 / **NA** 17033 / **SA** 17037

Photo: © Berni - fotolia.com

DECO-LINE

DM MONSOON

2600 x 1000



Product characteristics

	NA	SA
Base material	HIPS	
Surface material	Print	
Material thickness mm	1,0	1,13
Temperature stability	up to 60 °C	
Wet room suitability	■■■■□	
Abrasion resistance	■■■■□□□	
Rolled packable	✓	✓

Processing

	NA	SA
Cutting, punching	✓	✓
Drilling	✓	✓
Sawing, milling	✓	—
Laser cutting	✓	✓
Hot bending	✓	—
Thermoforming	—	—
PVA compressible	✓	—
Smallest bending radius	150 mm	150 mm

Extra equipment

	NA	SA
Special formats	On request	
Further thicknesses	—	—
Cuttings	✓	✓
Magnetic from 3 sheets	✓	
PVA pre-treatment	✓	—

Accessories

SIBUKLE	Spatula A I
---------	-------------

Special colors

—



PR+*

DM MARBLE White
2600 x 1000 / **NA** 19327 / **SA** 19338



□
DM MARBLE White

Photo: © fotolia.com

2600 x 1000



DECO-LINE

DM MARBLE White

Product characteristics

	NA	SA
Base material	HIPS	
Surface material	impregnated paper	
Material thickness mm	1,3	1,43
Temperature stability	up to 60 °C	
Wet room suitability	■■■□	
Abrasion resistance	■■■■■□	
Rolled packable **	✓	✓

Processing

	NA	SA
Cutting, punching	✓	✓
Drilling	✓	✓
Sawing, milling	✓	—
Laser cutting	✓	✓
Hot bending	✓	—
Thermoforming	—	—
PVA compressible	✓	—
Smallest bending radius	150 mm	150 mm

Extra equipment

	NA	SA
Special formats	On request	
Further thicknesses	✓	✓
Cuttings	✓	✓
Magnetic from 3 sheets ***	✓	
PVA pre-treatment	✓	—

Accessories

SIBUKLE	Spatula Al
---------	------------

Special colors

—

* Prior to printing a corona or plasma treatment has to be carried out. Upon request available in pre-treated version.
 ** Design sheets are to be rolled with the patterned side on the inside (applies for both the NA and SA versions).
 We recommend that not more than 3 sheets be rolled per carton (480 x 480 mm).
 *** Ground must be a SIBU metal foil SA (ref. 17637, self adhesive).





FR
PR+

DM VINTAGE Copper
2600 x 1000 / NA 17276 / SA 17277



FR
PR+

DM VINTAGE Silver
2600 x 1000 / NA 17274 / SA 17275

□
DM VINTAGE Copper

DECO-LINE

DM Vintage

2600 x 1000



Product characteristics

	NA	SA
Base material	HIPS	
Surface material	Print	
Material thickness mm	1,0	1,13
Temperature stability	up to 60 °C	
Wet room suitability	■■■■□	
Abrasion resistance	■■■■■■□	
Rolled packable	✓	✓

Processing

	NA	SA
Cutting, punching	✓	✓
Drilling	✓	✓
Sawing, milling	✓	—
Laser cutting	✓	✓
Hot bending	✓	—
Thermoforming	✓	—
PVA compressible	✓	—
Smallest bending radius	150 mm	150 mm

Extra equipment

	NA	SA
Special formats	On request	
Further thicknesses	✓	✓
Cuttings	✓	✓
Magnetic from 3 sheets	✓	
PVA pre-treatment	✓	—

Accessories

SIBUKLE	Spatula A1
---------	------------

Special colors

—



PR+*

DM CEMENT Light

2600 x 1000 / **NA** 19087 / **SA** 19091



□ DM CEMENT Light

2600 x 1000



DECO-LINE

DM CEMENT Light

Product characteristics

	NA	SA
Base material	HIPS	
Surface material	impregnated paper	
Material thickness mm	1,2	1,33
Temperature stability	up to 60 °C	
Wet room suitability	■■■■□	
Abrasion resistance	■■■■■■□	
Rolled packable **	✓	✓

Processing

	NA	SA
Cutting, punching	✓	✓
Drilling	✓	✓
Sawing, milling	✓	—
Laser cutting	✓	✓
Hot bending	✓	—
Thermoforming	—	—
PVA compressible	✓	—
Smallest bending radius	150 mm	150 mm

Extra equipment

	NA	SA
Special formats	On request	
Further thicknesses	✓	✓
Cuttings	✓	✓
Magnetic from 3 sheets ***	✓	
PVA pre-treatment	✓	—

Accessories

SIBUKLE	Spatula A1
---------	------------

Special colors

—

* Prior to printing a corona or plasma treatment has to be carried out. Upon request available in pre-treated version.
 ** Design sheets are to be rolled with the patterned side on the inside (applies for both the NA and SA versions).
 We recommend that not more than 3 sheets be rolled per carton (480 x 480 mm).
 *** Ground must be a SIBU metal foil SA (ref. 17637, self adhesive).





DM CEMENT Dark
2600 x 1000 / **NA** 19088 / **SA** 19092

Photo: © iStock.com

DECO-LINE

DM CEMENT Dark

2600 x 1000



Product characteristics

	NA	SA
Base material	HIPS	
Surface material	impregnated paper	
Material thickness mm	1,3	1,43
Temperature stability	up to 60 °C	
Wet room suitability	■■■■□	
Abrasion resistance	■■■■□□	
Rolled packable **	✓	✓

Processing

	NA	SA
Cutting, punching	✓	✓
Drilling	✓	✓
Sawing, milling	✓	—
Laser cutting	✓	✓
Hot bending	✓	—
Thermoforming	—	—
PVA compressible	✓	—
Smallest bending radius	150 mm	150 mm

Extra equipment

	NA	SA
Special formats	On request	
Further thicknesses	✓	✓
Cuttings	✓	✓
Magnetic from 3 sheets ***	✓	
PVA pre-treatment	✓	—

Accessories

SIBUKLE	Spatula A1
---------	------------

Special colors

—

* Prior to printing a corona or plasma treatment has to be carried out. Upon request available in pre-treated version.
** Design sheets are to be rolled with the patterned side on the inside (applies for both the NA and SA versions).
*** We recommend that not more than 3 sheets be rolled per carton (480 x 480 mm).
**** Ground must be a SIBU metal foil SA (ref. 17637, self adhesive).



DM MAGIC White AR
2600 x 1000 / 1 mm / **NA** 15414 / **SA** 15422



DM MAGIC Black AR
2600 x 1000 / 1 mm / **NA** 15415 / **SA** 15423
2600 x 1000 / 2 mm / **NA** 15417 / **SA** -



□ DM MAGIC White AR

Photo: SU VALGUS

DECO-LINE abrasion-resistant

DM MAGIC AR

Product characteristics

	NA	SA
Base material	HIPS	
Surface material	PET	
Material thickness mm	1,0 / 2,0	1,13 / 2,13
Temperature stability	up to 60 °C	
Wet room suitability	■■■■■	
Abrasion resistance	■■■■■■■	
Rolled packable	✓	✓

Processing

	NA	SA
Cutting, punching	✓	✓
Drilling	✓	✓
Sawing, milling	✓	—
Laser cutting	✓	✓
Hot bending	✓	—
Thermoforming	✓	—
PVA compressible	✓	—
Smallest bending radius	150 mm	150 mm

Extra equipment

	NA	SA
Special formats	On request	
Further thicknesses	✓	✓
Cuttings	✓	✓
Magnetic from 3 sheets	✓	
PVA pre-treatment	✓	—

Accessories

SIBUKLE	Spatula A1
---------	------------

Special colors

On request



□
DM Travertin



PRS*

DM Travertin
2600 x 1000 / **NA** 19328 / **SA** 19339

DECO-LINE

DM Travertin

2600 x 1000



Product characteristics

	NA	SA
Base material	HIPS	
Surface material	impregnated paper	
Material thickness mm	1,3	1,43
Temperature stability	up to 60 °C	
Wet room suitability	■■■■□	
Abrasion resistance	■■■■□□	
Rolled packable **	✓	✓

Processing

	NA	SA
Cutting, punching	✓	✓
Drilling	✓	✓
Sawing, milling	✓	—
Laser cutting	✓	✓
Hot bending	✓	—
Thermoforming	—	—
PVA compressible	✓	—
Smallest bending radius	150 mm	150 mm

Extra equipment

	NA	SA
Special formats	On request	
Further thicknesses	✓	✓
Cuttings	✓	✓
Magnetic from 3 sheets***	✓	
PVA pre-treatment	✓	—

Accessories

SIBUKLE	Spatula A1
---------	------------

Special colors

—

* Prior to printing a corona or plasma treatment has to be carried out. Upon request available in pre-treated version.
** Design sheets are to be rolled with the patterned side on the inside (applies for both the NA and SA versions).
*** We recommend that not more than 3 sheets be rolled per carton (480 x 480 mm).
**** Ground must be a SIBU metal foil SA (ref. 17637, self adhesive).



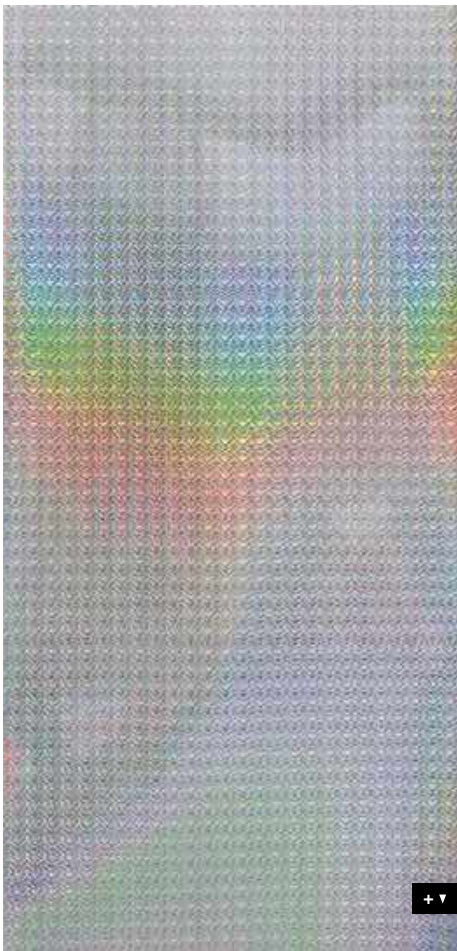
PR+

DM GALAXY Silver
2600 x 1000 / **NA** 10169 / **SA** 10175



DM GALAXY Silver

2600 x 1000



+ ▾

DECO-LINE

DM GALAXY

Product characteristics

	NA	SA
Base material	HIPS	
Surface material	Print	
Material thickness mm	1,0	1,13
Temperature stability	up to 60 °C	
Wet room suitability	■■■□	
Abrasion resistance	■■■■■□	
Rolled packable	✓	✓

Processing

	NA	SA
Cutting, punching	✓	✓
Drilling	✓	✓
Sawing, milling	✓	—
Laser cutting	✓	✓
Hot bending	✓	—
Thermoforming	—	—
PVA compressible	✓	—
Smallest bending radius	150 mm	150 mm

Extra equipment

	NA	SA
Special formats	On request	
Further thicknesses	✓	✓
Cuttings	✓	✓
Magnetic from 3 sheets	✓	
PVA pre-treatment	✓	—

Accessories

SIBUKLE	Spatula A1
---------	------------

Special colors

—



Photo: © Barbara Medo



DM Hollywood
2600 x 1000 / **NA** 18433 / **SA** 18442



DM Hollywood Blue
2600 x 1000 / **NA** 20945 / **SA** 21272



DM Aqua
2600 x 1000 / **NA** 18424 / **SA** 18443

DECO-LINE

DM Mirror

Product characteristics

	NA	SA
Base material	HIPS	
Surface material	PET	
Material thickness mm	1,0	1,13
Temperature stability	up to 60 °C	
Wet room suitability	■■■■□	
Abrasion resistance	■■■■□□	
Rolled packable	✓	✓

Processing

	NA	SA
Cutting, punching	✓	✓
Drilling	✓	✓
Sawing, milling	✓	—
Laser cutting	✓	✓
Hot bending	✓	—
Thermoforming	✓	—
PVA compressible	✓	—
Smallest bending radius	150 mm	150 mm

Extra equipment

	NA	SA
Special formats	On request	
Further thicknesses	✓	✓
Cuttings	✓	✓
Magnetic from 3 sheets	✓	
PVA pre-treatment	✓	—

Accessories

SIBUKLE	Spatula A1
---------	------------

Special colors

On request



PR+

DM LUXURY Holografico
2600 x 1000 / **NA** 19009 / **SA** 19020



DM LUXURY Holografico

Photo: © istock.com

2600 x 1000



+ ▼

DECO-LINE

DM LUXURY Holografico

Product characteristics

	NA	SA
Base material	HIPS	
Surface material	Print	
Material thickness mm	1,0	1,13
Temperature stability	up to 60 °C	
Wet room suitability	■ ■ ■ □	
Abrasion resistance	■ □ □ □ □ □	
Rolled packable	✓	✓

Processing

	NA	SA
Cutting, punching	✓	✓
Drilling	✓	✓
Sawing, milling	✓	—
Laser cutting	✓	✓
Hot bending	✓	—
Thermoforming	—	—
PVA compressible	✓	—
Smallest bending radius	150 mm	150 mm

Extra equipment

	NA	SA
Special formats	On request	
Further thicknesses	✓	✓
Cuttings	✓	✓
Magnetic from 3 sheets *	✓	
PVA pre-treatment	✓	—

* Ground must be a SIBU metal foil SA (ref. 17637, self adhesive).

Accessories

SIBUKLE	Spatula A1
---------	------------

Special colors

—



□ DM Smoke PF



DM Silver PF
2600 x 1000 / **NA** 10357 / **SA** 10363



DM Smoke PF
2600 x 1000 / **NA** 10385 / **SA** 10389

DECO-LINE abrasion-resistant

DM PF

Product characteristics

	NA	SA
Base material	HIPS	
Surface material	Print	
Material thickness mm	1,0	1,13
Temperature stability	up to 60 °C	
Wet room suitability	■■■■■	
Abrasion resistance	■■■■■■■	
Rolled packable	✓	✓

Processing

	NA	SA
Cutting, punching	✓	✓
Drilling	✓	✓
Sawing, milling	✓	—
Laser cutting	✓	✓
Hot bending	✓	—
Thermoforming	✓	—
PVA compressible	✓	—
Smallest bending radius	150 mm	150 mm

Extra equipment

	NA	SA
Special formats	On request	
Further thicknesses	✓	✓
Cuttings	✓	✓
Magnetic from 3 sheets	✓	
PVA pre-treatment	✓	—

Accessories

SIBUKLE	Spatula A1
---------	------------

Special colors

On request



DM OPTICAL MIRROR Silver AR
2800 x 1250 / NA 20877



DM OPTICAL MIRROR Fashion Grey AR
2800 x 1250 / NA 21244



DM OPTICAL MIRROR Anthracite AR
2800 x 1250 / NA 21241



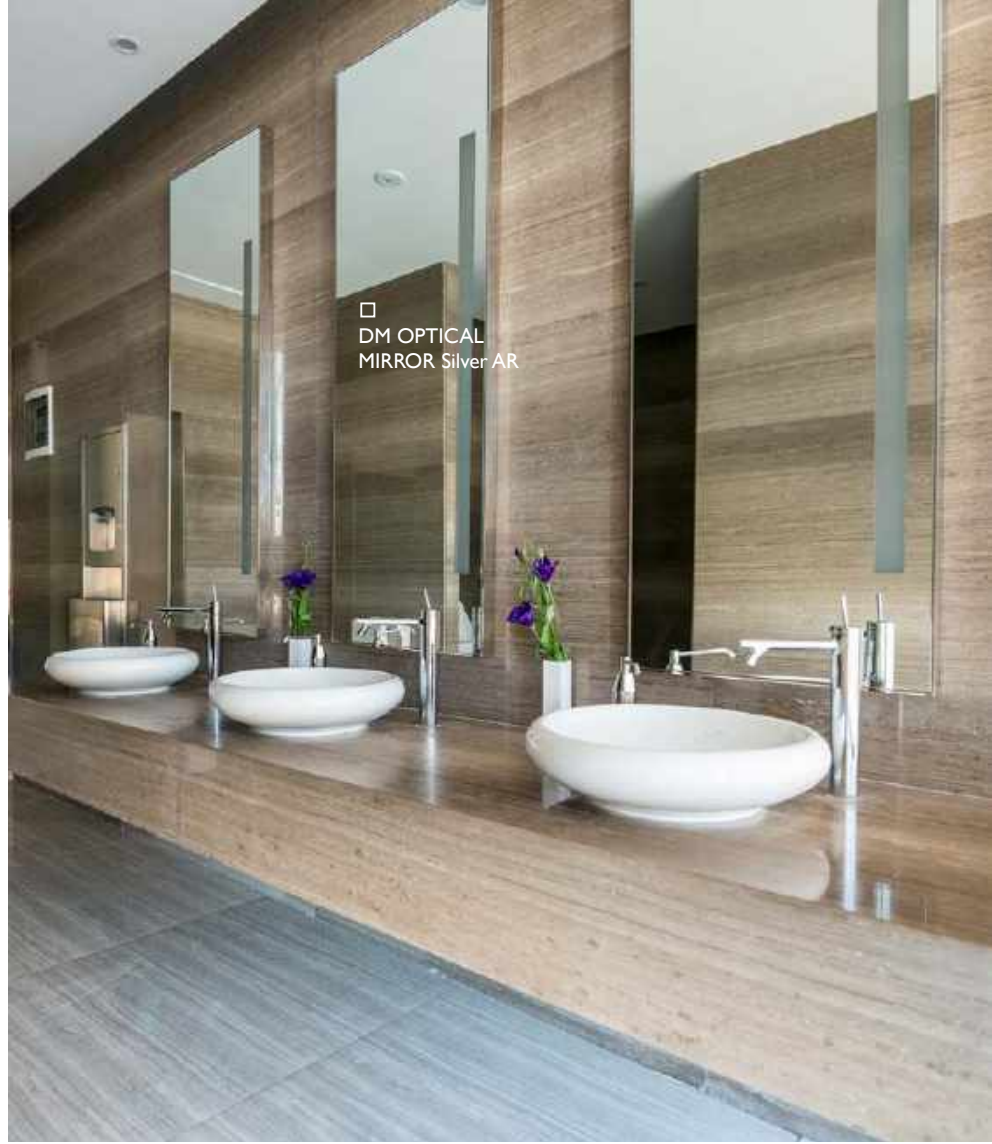
DM OPTICAL MIRROR Brass AR
2800 x 1250 / NA 21242



DM OPTICAL MIRROR Gold AR
2800 x 1250 / NA 21243



DM OPTICAL MIRROR Copper AR
2800 x 1250 / NA 21245



DECO-LINE **abrasion-resistant**

DM OPTICAL MIRROR AR

Product characteristics

	NA
Base material	HIPS
Surface material	PET
Material thickness mm	1,0
Temperature stability	up to 60 °C
Wet room suitability	■■■□
Abrasion resistance	■■■■■■■
Rolled packable	✓

Processing

	NA
Cutting, punching	✓
Drilling	✓
Sawing, milling	✓
Laser cutting	✓
Hot bending	✓
Thermoforming	✓
PVA compressible	✓
Smallest bending radius	150 mm

Extra equipment

	NA
Special formats	On request
Further thicknesses	✓
Cuttings	✓
Magnetic from 3 sheets	—
PVA pre-treatment	✓

Accessories

SIBUKLE	—
---------	---

Special colors

—



DM Silver MMS
2600 x 1000 / **NA** 20499 / **SA** 20501



DM Gold MMS
2600 x 1000 / **NA** 20500 / **SA** 20502

DECO-LINE

DM MMS

Product characteristics

	NA	SA
Base material	HIPS	
Surface material	Print	
Material thickness mm	1,0	1,13
Temperature stability	up to 60 °C	
Wet room suitability	■■■□	
Abrasion resistance	■■■□□□	
Rolled packable	✓	✓

Processing

	NA	SA
Cutting, punching	✓	✓
Drilling	✓	✓
Sawing, milling	✓	—
Laser cutting	✓	✓
Hot bending	✓	—
Thermoforming	—	—
PVA compressible	✓	—
Smallest bending radius	150 mm	150 mm

Extra equipment

	NA	SA
Special formats	On request	
Further thicknesses	✓	✓
Cuttings	✓	✓
Magnetic from 3 sheets	✓	
PVA pre-treatment	✓	—

Accessories

SIBUKLE	Spatula A1
---------	------------

Special colors

On request



FR
PR+

DM Silver

2600 x 1000 / 1 mm / **NA** 10312 / **SA** 10324
 2000 x 1000 / 1 mm / **NA** 10304 / **SA** 10322
 2000 x 1000 / 2 mm / **NA** 12114 / **SA** 10323



FR
PR+

DM Silver/White

2000 x 1000 / 1 mm / **NA** 10372 / **SA** 10381



DECO-LINE

DM Mirror

Product characteristics

	NA	SA
Base material	HIPS	
Surface material	PET	
Material thickness mm	1,0 / 2,0	1,13 / 2,13
Temperature stability	up to 60 °C	
Wet room suitability	■■■■□	
Abrasion resistance	■■■■□□	
Rolled packable	✓	✓

Processing

	NA	SA
Cutting, punching	✓	✓
Drilling	✓	✓
Sawing, milling	✓	—
Laser cutting	✓	✓
Hot bending	✓	—
Thermoforming	✓	—
PVA compressible	✓	—
Smallest bending radius	150 mm	150 mm

Extra equipment

	NA	SA
Special formats	On request	
Further thicknesses	✓	✓
Cuttings	✓	✓
Magnetic from 3 sheets	✓	
PVA pre-treatment	✓	—

Accessories

SIBUKLE	Spatula A1
---------	------------

Special colors

On request



□ DM Gold AR



FR
PR+

DM Gold AR

2600 x 1000 / **NA** I0181 / **SA** I0187
2000 x 1000 / **NA** I0178 / **SA** I0186



FR
PR+

DM Rosegold AR

2600 x 1000 / **NA** 20955 / **SA** 20956



FR
PR+

DM Brass AR

2600 x 1000 / **NA** I0135 / **SA** I0139

DECO-LINE abrasion-resistant

DM Mirror AR

Product characteristics

	NA	SA
Base material	HIPS	
Surface material	PET	
Material thickness mm	1,0	1,13
Temperature stability	up to 60 °C	
Wet room suitability	■■■■□	
Abrasion resistance	■■■■■■■	
Rolled packable	✓	✓

Processing

	NA	SA
Cutting, punching	✓	✓
Drilling	✓	✓
Sawing, milling	✓	—
Laser cutting	✓	✓
Hot bending	✓	—
Thermoforming	✓	—
PVA compressible	✓	—
Smallest bending radius	150 mm	150 mm

Extra equipment

	NA	SA
Special formats	On request	
Further thicknesses	✓	✓
Cuttings	✓	✓
Magnetic from 3 sheets	✓	
PVA pre-treatment	✓	—

Accessories

SIBUKLE	Spatula A I
---------	-------------

Special colors

—



DM Anthracite AR
2600 x 1000 / **NA** 10120 / **SA** 10125



DM Copper AR
2600 x 1000 / **NA** 17272 / **SA** 17273



DM Brown AR
2600 x 1000 / **NA** 10147 / **SA** 10150



DM Rose AR
2600 x 1000 / **NA** 10271 / **SA** 12428



DM Iceblue AR
2600 x 1000 / **NA** 10204 / **SA** 10210



DM Fashion Grey AR
2600 x 1000 / **NA** 13808 / **SA** 13810



□ **DM Rose AR**

Photo: © Form Factory

DECO-LINE **abrasion-resistant**

DM Mirror AR

Product characteristics

	NA	SA
Base material	HIPS	
Surface material	PET	
Material thickness mm	1,0	1,13
Temperature stability	up to 60 °C	
Wet room suitability	■■■■□	
Abrasion resistance	■■■■■■■	
Rolled packable	✓	✓

Processing

	NA	SA
Cutting, punching	✓	✓
Drilling	✓	✓
Sawing, milling	✓	—
Laser cutting	✓	✓
Hot bending	✓	—
Thermoforming	✓	—
PVA compressible	✓	—
Smallest bending radius	150 mm	150 mm

Extra equipment

	NA	SA
Special formats	On request	
Further thicknesses	✓	✓
Cuttings	✓	✓
Magnetic from 3 sheets	✓	
PVA pre-treatment	✓	—

Accessories

SIBUKLE	Spatula A1
---------	------------

Special colors

—



□ DM Fashion Red (printed)

Photo: © Form Factory



DM Bronze
2600 x 1000 / **NA** 10143 / **SA** 15275



DM Champagne
2600 x 1000 / **NA** 12416 / **SA** 12430



DM Gold 30
2600 x 1000 / **NA** 10222 / **SA** 11504



DM Fashion Red
2600 x 1000 / **NA** 10213 / **SA** 13807

DECO-LINE

DM Mirror

Product characteristics

	NA	SA
Base material	HIPS	
Surface material	PET	
Material thickness mm	1,0	1,13
Temperature stability	up to 60 °C	
Wet room suitability	■■■■□	
Abrasion resistance	■■■■□□	
Rolled packable	✓	✓

Processing

	NA	SA
Cutting, punching	✓	✓
Drilling	✓	✓
Sawing, milling	✓	—
Laser cutting	✓	✓
Hot bending	✓	—
Thermoforming	✓	—
PVA compressible	✓	—
Smallest bending radius	150 mm	150 mm

Extra equipment

	NA	SA
Special formats	On request	
Further thicknesses	✓	✓
Cuttings	✓	✓
Magnetic from 3 sheets	✓	
PVA pre-treatment	✓	—

Accessories

SIBUKLE	Spatula A1

Special colors

—



FR

DM Brass brushed matt AR
2600 x 1000 / **NA** 15290 / **SA** 15298



FR

DM Gold brushed matt AR
2600 x 1000 / **NA** 15291 / **SA** 15299



□ DM Gold brushed matt AR

DECO-LINE abrasion-resistant

DM Brushed matt

2600 x 1000



+ ▼

Product characteristics

	NA	SA
Base material	HIPS	
Surface material	PET	
Material thickness mm	1,0	1,13
Temperature stability	up to 60 °C	
Wet room suitability	■■■□	
Abrasion resistance	■■■■■■■	
Rolled packable	✓	✓

Processing

	NA	SA
Cutting, punching	✓	✓
Drilling	✓	✓
Sawing, milling	✓	—
Laser cutting	✓	✓
Hot bending	✓	—
Thermoforming	✓	—
PVA compressible	✓	—
Smallest bending radius	150 mm	150 mm

Extra equipment

	NA	SA
Special formats	On request	
Further thicknesses	✓	✓
Cuttings	✓	✓
Magnetic from 3 sheets	✓	
PVA pre-treatment	✓	—

Accessories

SIBUKLE	Spatula A1
---------	------------

Special colors

—



□ DM Silver brushed



FR
PR+

DM Silver brushed
2600 x 1000 / **NA** 10291 / **SA** 10298
2000 x 1000 / **NA** 10286 / **SA** 10296



FR
PRS

DM HGS
2600 x 1000 / **NA** 10193 / **SA** 10199



FR
PRS

DM Champagne brushed
2600 x 1000 / **NA** 12417 / **SA** 12433



FR
PRS

DM Titan brushed
2600 x 1000 / **NA** 12285 / **SA** 12431



FR
PRS

DM Copper brushed
2600 x 1000 / **NA** 12418 / **SA** 12432

2600 x 1000



DECO-LINE abrasion-resistant

DM Brushed

Product characteristics

	NA	SA
Base material	HIPS	
Surface material	PET	
Material thickness mm	1,0	1,13
Temperature stability	up to 60 °C	
Wet room suitability	■■■■□	
Abrasion resistance	■■■■■■■	
Abrasion resistance DM Silver brushed	■■■■■■□	
Rolled packable	✓	✓

Processing

	NA	SA
Cutting, punching	✓	✓
Drilling	✓	✓
Sawing, milling	✓	—
Laser cutting	✓	✓
Hot bending	✓	—
Thermoforming	✓	—
PVA compressible	✓	—
Smallest bending radius	150 mm	150 mm

Extra equipment

	NA	SA
Special formats	On request	
Further thicknesses	✓	✓
Cuttings	✓	✓
Magnetic from 3 sheets	✓	
PVA pre-treatment	✓	—

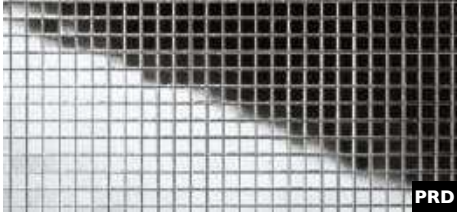
Accessories

SIBUKLE	Spatula A1
---------	------------

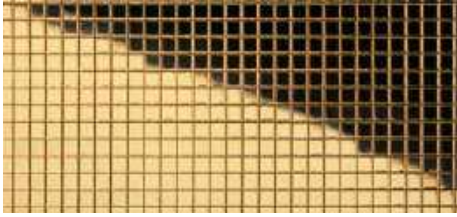
Special colors

—

MULTISTYLE



MS 3x3 flex Classic Silver
980 x 980 / SA 10650



MS 3x3 flex Classic Gold AR
980 x 980 / SA 10592



□ MS 3x3 flex Classic Gold AR

MULTISTYLE MS 3x3

Product characteristics

	SA
Base material	HIPS
Surface material	PET
Material thickness mm	1,2
Temperature stability	up to 50 °C
Wet room suitability	■■■□
Abrasion resistance	■■■■□□
Abrasion resistance MS Gold AR	■■■■■■
Rolled packable	✓

Processing

	SA
Cutting, punching	✓
Drilling	✓
Sawing, milling	—
Laser cutting	✓
Hot bending	—
PVA compressible	—

Extra equipment

	SA
Special formats	—
Further thicknesses	—
Cuttings	✓
Magnetic from 3 sheets	✓
PVA pre-treatment	—

Accessories

SIBUKLE	Spatula AI
---------	------------

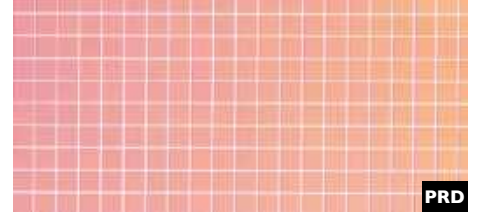
Special colors

On request



□ MS 5x5 flex Classic Gold AR

Photo: TENN X KAREN MILLEN



PRD

MS 5x5 flex Classic Hollywood
980 x 980 / SA 18436



PRD

MS 5x5 flex Classic Silver
980 x 980 / SA 10657



PRD

MS 5x5 flex Classic Gold AR
980 x 980 / SA 10598

MULTISTYLE MS 5x5

Product characteristics

	SA
Base material	HIPS
Surface material	PET
Material thickness mm	1,2
Temperature stability	up to 50 °C
Wet room suitability	■■■■□
Abrasion resistance	■■■■□□
Abrasion resistance MS Gold AR	■■■■■■■
Rolled packable	✓

Extra equipment

	SA
Special formats	✓
Maximum length mm	3000
Maximum width mm	1000
Further thicknesses	—
Cuttings	✓
Magnetic from 3 sheets	✓
PVA pre-treatment	—

Processing

	SA
Cutting, punching	✓
Drilling	✓
Sawing, milling	—
Laser cutting	✓
Hot bending	—
PVA compressible	—

Accessories

SIBUKLE	Spatula A1
---------	------------

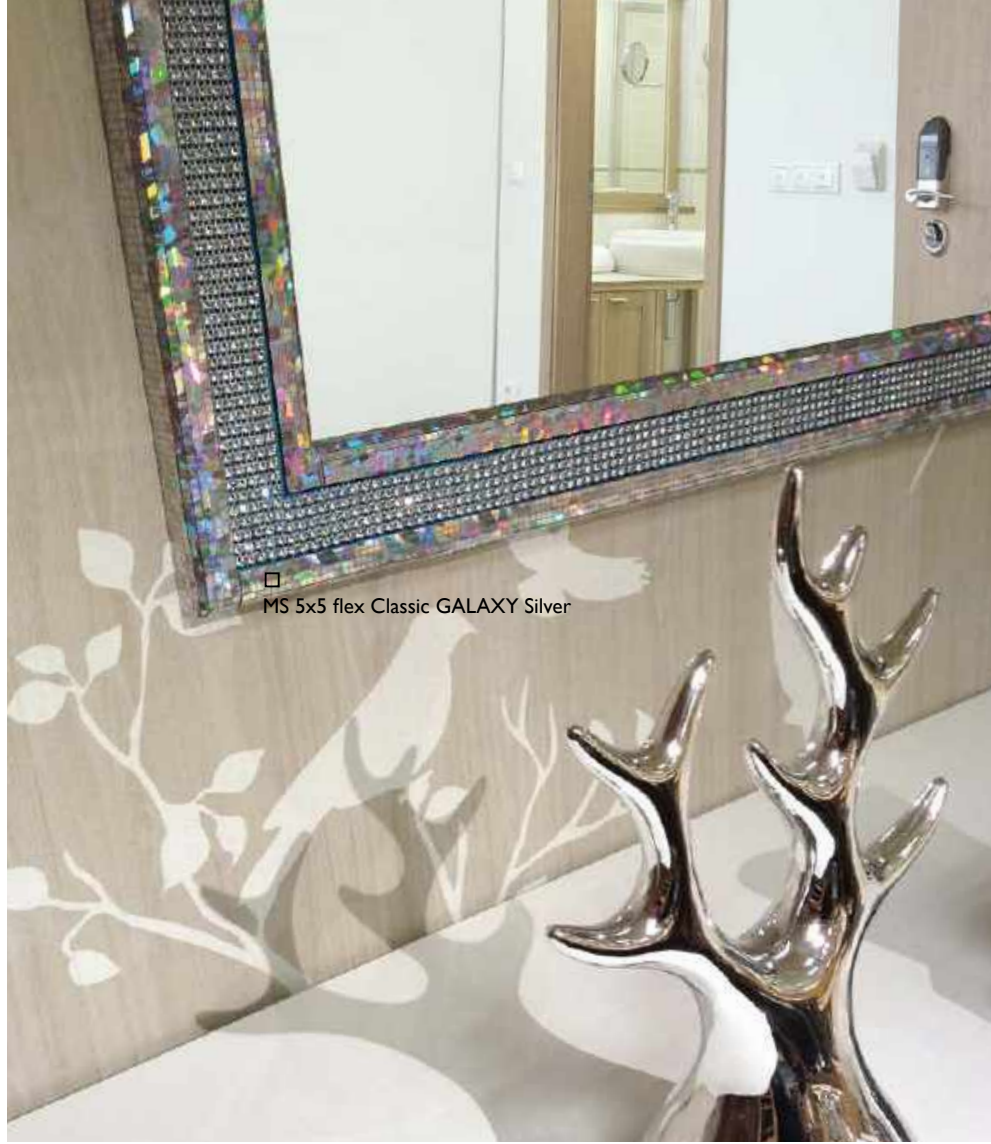
Special colors

On request



PRD

MS 5x5 flex Classic GALAXY Silver
980 x 980 / SA 10575



□ MS 5x5 flex Classic GALAXY Silver

MULTISTYLE MS 5x5

Product characteristics

	SA
Base material	HIPS
Surface material	Print
Material thickness mm	1,2
Temperature stability	up to 50 °C
Wet room suitability	■■■□
Abrasion resistance	■■■■■□
Rolled packable	✓

Processing

	SA
Cutting, punching	✓
Drilling	✓
Sawing, milling	—
Laser cutting	✓
Hot bending	—
PVA compressible	—

Extra equipment

	SA
Special formats	✓
Maximum length mm	3000
Maximum width mm	1000
Further thicknesses	—
Cuttings	✓
Magnetic from 3 sheets	✓
PVA pre-treatment	—

Accessories

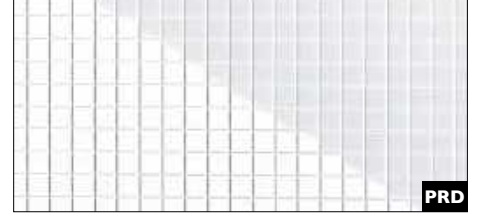
SIBUKLE	Spatula A1
---------	------------

Special colors

—



□ MS 5x5 flex Classic MAGIC Black



MS 5x5 flex Classic MAGIC White
980 x 980 / SA 13476



MS 5x5 flex Classic MAGIC Black
980 x 980 / SA 13475

MULTISTYLE MS 5x5

Product characteristics

	SA
Base material	HIPS
Surface material	PET
Material thickness mm	1,2
Temperature stability	up to 50 °C
Wet room suitability	■■■■■
Abrasion resistance	■■■■□□
Rolled packable	✓

Extra equipment

	SA
Special formats	✓
Maximum length mm	3000
Maximum width mm	1000
Further thicknesses	—
Cuttings	✓
Magnetic from 3 sheets	✓
PVA pre-treatment	—
Abrasion resistance	■■■■■■■

Processing

	SA
Cutting, punching	✓
Drilling	✓
Sawing, milling	—
Laser cutting	✓
Hot bending	—
PVA compressible	—

Accessories

SIBUKLE	SA
	Spatula A1

Special colors

On request



MS 10x10 flex Classic Silver
980 x 980 / SA 10639



MS 10x10 flex Classic Gold AR
980 x 980 / SA 10581



MS 20x20 flex Classic Silver
980 x 980 / SA 10644



MS 20x20 flex Classic Gold AR
980 x 980 / SA 10582



□ MS 20x20 flex Classic Silver

□ MS Silver 10x10 flex Classic

Photo: Malo Clinic at El Corte Ingles – Lisboa

MULTISTYLE

MS 10x10 / 20x20

Product characteristics

	SA
Base material	HIPS
Surface material	PET
Material thickness mm	1,2
Temperature stability	up to 50 °C
Wet room suitability	■■■□
Abrasion resistance	■■■■□□
Abrasion resistance MS Gold AR	■■■■■■
Rolled packable	✓

Extra equipment

	SA
Special formats	✓
Maximum length mm	3000
Maximum width mm	1000
Further thicknesses	—
Cuttings	✓
Magnetic from 3 sheets	✓
PVA pre-treatment	—

Processing

	SA
Cutting, punching	✓
Drilling	✓
Sawing, milling	—
Laser cutting	✓
Hot bending	—
PVA compressible	—

Accessories

SIBUKLE	Spatula AI
---------	------------

Special colors

On request



MSC 10x10 flex Classic Silver

Photo: Spacetekusa



PRD

MSC 10x10 flex Classic Silver
2600 x 1000 / SA 14239



PRD

MSC 30x30 flex Classic Silver
2600 x 1000 / SA 14279

MULTISTYLE

MSC 10x10 / 30x30

2600 x 1000

Product characteristics

	SA
Base material	HIPS
Surface material	PET
Material thickness mm	1,2
Temperature stability	up to 50 °C
Wet room suitability	■■■□
Abrasion resistance	■■■■□□
Rolled packable	✓

Extra equipment

	SA
Special formats	✓
Maximum length mm	3000
Maximum width mm	1000
Further thicknesses	—
Cuttings	✓
Magnetic from 3 sheets	✓
PVA pre-treatment	—

Processing

	SA
Cutting, punching	✓
Drilling	✓
Sawing, milling	—
Laser cutting	✓
Hot bending	—
PVA compressible	—

Accessories

SIBUKLE	Spatula A1
---------	------------

Special colors

On request



STRUCTURE- LINE



PRD

SL CRASHED OLD Platin
2600 x 1000 / **NA** 19519 / **SA** 19523



□ SL CRASHED OLD Platin

Photo: Dekomat AG - Creative Expert

2600 x 1000



+ ▼

STRUCTURE-LINE

SL CRASHED OLD Platin

Product characteristics

	NA	SA
Base material	HIPS	
Surface material	Print	
Material thickness mm	1,0	1,13
Max. relief height mm	2,8	3,04
Temperature stability	up to 60 °C	
Wet room suitability	■■■■□	
Abrasion resistance	■■■■■□	
Rolled packable	✓	✓

Processing

	NA	SA
Cutting, punching	✓	✓
Drilling	✓	✓
Sawing, milling	✓	—
Laser cutting	✓	✓
Hot bending	✓	—
PVA compressible	✓	—
Smallest bending radius	150 mm	150 mm

Extra equipment

	NA	SA
Special formats	—	—
Further thicknesses	—	—
Cuttings	✓	✓
Magnetic from 3 sheets *	✓	
PVA pre-treatment	✓	—

Accessories

SIBUKLE	Spatula A2
---------	------------

Special colors

On request

* Ground must be a SIBU metal foil SA (ref. 17637, self adhesive).



□ SL CRASHED Silver



FR
PRD

SL CRASHED Silver
2600 x 1000 / **NA** 19335 / **SA** 19346

Photo: © fotolia.com

STRUCTURE-LINE SL CRASHED

2600 x 1000

Product characteristics

	NA	SA
Base material	HIPS	
Surface material	PET	
Material thickness mm	1,0	1,13
Max. relief height mm	2,4	2,64
Temperature stability	up to 60 °C	
Wet room suitability	■■■■□	
Abrasion resistance	■■■■■□□	
Rolled packable	✓	✓

Processing

	NA	SA
Cutting, punching	✓	✓
Drilling	✓	✓
Sawing, milling	✓	—
Laser cutting	✓	✓
Hot bending	✓	—
PVA compressible	✓	—
Smallest bending radius	150 mm	150 mm

Extra equipment

	NA	SA
Special formats	—	
Further thicknesses	—	—
Cuttings	✓	✓
Magnetic from 3 sheets *	✓	
PVA pre-treatment	✓	—

Accessories

SIBUKLE	Spatula A2
---------	------------

Special colors

On request



* Ground must be a SIBU metal foil SA (ref. 17637, self adhesive).



SL IMPACT VINTAGE Silver
2600 x 1000 / **NA** 17230 / **SA** 17231



SL IMPACT ANTIQUE Bronze
2600 x 1000 / **NA** 17232 / **SA** 17233



□ SL IMPACT ANTIQUE Bronze



Photo: © amst - fotolia.com

2600 x 1000



STRUCTURE-LINE SL IMPACT

Product characteristics

	NA	SA
Base material	HIPS	
Surface material	Print	
Material thickness mm	1,0	1,13
Max. relief height mm	1,6	1,73
Temperature stability	up to 60 °C	
Wet room suitability	■■■■□	
Abrasion resistance	■■■■■□	
Rolled packable	✓	✓

Processing

	NA	SA
Cutting, punching	✓	✓
Drilling	✓	✓
Sawing, milling	✓	—
Laser cutting	✓	✓
Hot bending	✓	—
PVA compressible	✓	—
Smallest bending radius	150 mm	150 mm

Extra equipment

	NA	SA
Special formats	—	—
Further thicknesses	—	—
Cuttings	✓	✓
Magnetic from 3 sheets	✓	
PVA pre-treatment	✓	—

Accessories

SIBUKLE	Spatula A2
---------	------------

Special colors

On request

□ SL IMPACT VINTAGE Silver





FR
PRD

SL LAVA VINTAGE Copper
2600 x 1000 / **NA** 14786 / **SA** 14805



2600 x 1000



+ ▼

STRUCTURE-LINE

SL LAVA

Product characteristics

	NA	SA
Base material	HIPS	
Surface material	Print	
Material thickness mm	1,0	1,25
Max. relief height mm	2,1	2,35
Temperature stability	up to 60 °C	
Wet room suitability	■■■■□	
Abrasion resistance	■■■■■□	
Rolled packable	✓	✓

Processing

	NA	SA
Cutting, punching	✓	✓
Drilling	✓	✓
Sawing, milling	✓	—
Laser cutting	✓	✓
Hot bending	✓	—
PVA compressible	✓	—
Smallest bending radius	150 mm	150 mm

Extra equipment

	NA	SA
Special formats	—	—
Further thicknesses	—	—
Cuttings	✓	✓
Magnetic from 3 sheets	✓	
PVA pre-treatment	✓	—

Accessories

SIBUKLE	Spatula A2
---------	------------

Special colors

On request



SL RACE VINTAGE Silver/Bronze
2600 x 1000 / **NA** 17242 / **SA** 17243



SL RACE VINTAGE Copper/Silver
2600 x 1000 / **NA** 17240 / **SA** 17241

□
SL RACE
VINTAGE Copper/Silver

Photo Wilhelm Radinger

STRUCTURE-LINE SL RACE

2600 x 1000

Product characteristics

	NA	SA
Base material	HIPS	
Surface material	Print	
Material thickness mm	1,0	1,13
Max. relief height mm	1,7	1,83
Temperature stability	up to 60 °C	
Wet room suitability	■■■■□	
Abrasion resistance	■■■■□□□	
Rolled packable	✓	✓

Processing

	NA	SA
Cutting, punching	✓	✓
Drilling	✓	✓
Sawing, milling	✓	—
Laser cutting	✓	✓
Hot bending	✓	—
PVA compressible	✓	—
Smallest bending radius	150 mm	150 mm

Extra equipment

	NA	SA
Special formats	—	—
Further thicknesses	—	—
Cuttings	✓	✓
Magnetic from 3 sheets	✓	
PVA pre-treatment	✓	—

Accessories

SIBUKLE	Spatula A2
---------	------------

Special colors

On request





FR
PRD

SL CROCO Silver PF/Silver
2600 x 1000 / **NA** I3410 / **SA** I3520



FR
PRD

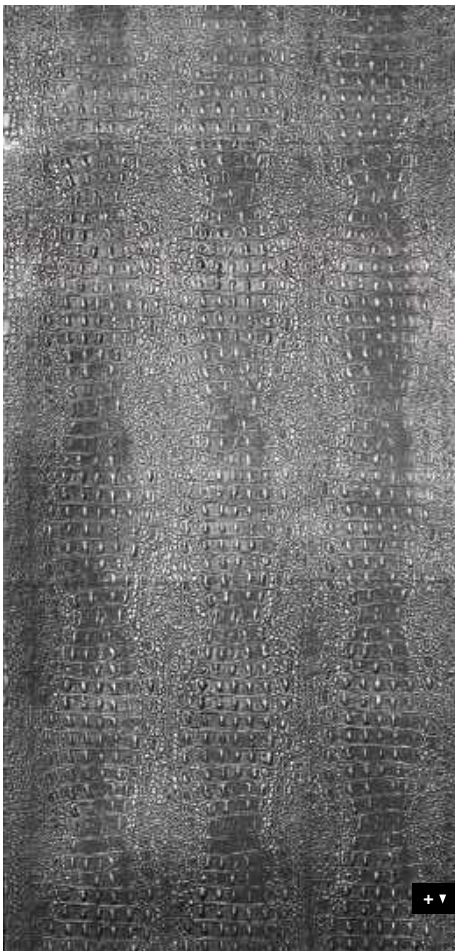
SL CROCO Smoke PF/Silver
2600 x 1000 / **NA** I3411 / **SA** I3521



SL CROCO Smoke PF/Silver

Photo: secetenendrinken.nl

2600 x 1000



STRUCTURE-LINE SL CROCO

Product characteristics

	NA	SA
Base material	HIPS	
Surface material	Print	
Material thickness mm	1,0	1,25
Max. relief height mm	2,6	2,85
Temperature stability	up to 60 °C	
Wet room suitability	■■■■□	
Abrasion resistance	■■■■□□	
Rolled packable	✓	✓

Processing

	NA	SA
Cutting, punching	✓	✓
Drilling	✓	✓
Sawing, milling	✓	—
Laser cutting	✓	✓
Hot bending	✓	—
PVA compressible	✓	—
Smallest bending radius	150 mm	150 mm

Extra equipment

	NA	SA
Special formats	—	—
Further thicknesses	—	—
Cuttings	✓	✓
Magnetic from 3 sheets	✓	
PVA pre-treatment	✓*	—

Accessories

SIBUKLE	Spatula A2
---------	------------

Special colors

On request

* except Smoke PF met



SL SQUARE 3 HGS
2600 x 1000 / 1,7 mm / **NA** 11272 / **SA** 11273

STRUCTURE-LINE SL SQUARE 3

2600 x 1000

Product characteristics

	NA	SA
Base material	HIPS	
Surface material	PET	
Material thickness mm	1,0	1,13
Max. relief height mm	1,7 / 2,0	1,83 / 2,13
Temperature stability	up to 60 °C	
Wet room suitability	■■■■□	
Abrasion resistance	■■■■■■■	
Rolled packable	✓	✓

Processing

	NA	SA
Cutting, punching	✓	✓
Drilling	✓	✓
Sawing, milling	✓	—
Laser cutting	✓	✓
Hot bending	✓	—
PVA compressible	✓	—
Smallest bending radius	150 mm	150 mm

Extra equipment

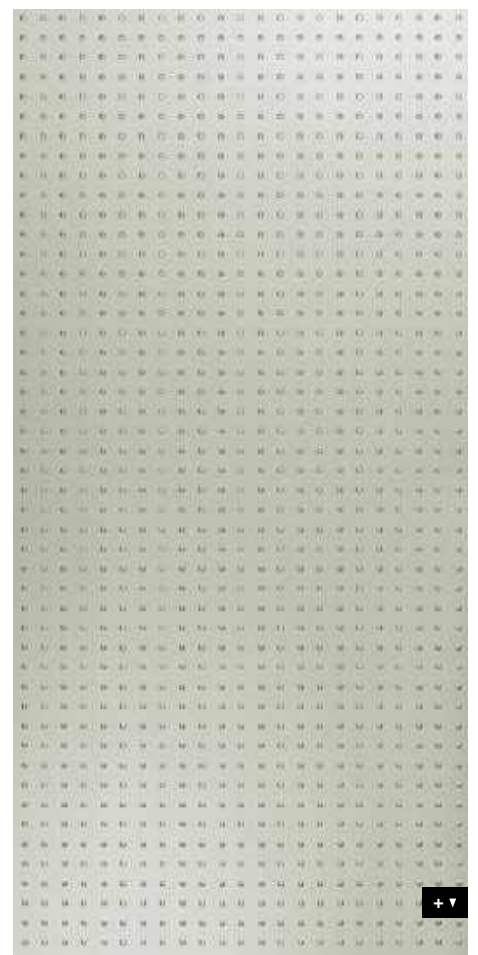
	NA	SA
Special formats	—	
Further thicknesses	—	—
Cuttings	✓	✓
Magnetic from 3 sheets	✓	
PVA pre-treatment	✓	—

Accessories

SIBUKLE	Spatula A2
---------	------------

Special colors

On request



ACRYLIC- LINE



AC MOTION ONE White
2600 x 1000 / **NA** 15933 / **SA** 15953

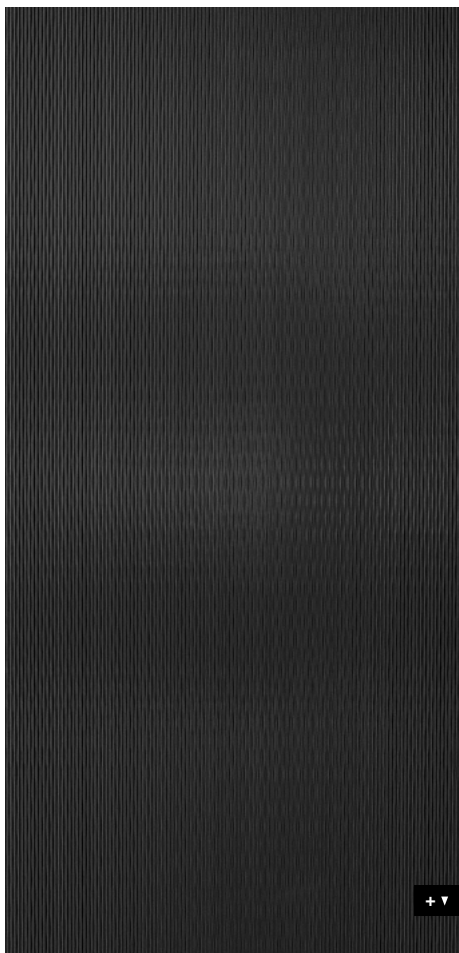


AC MOTION ONE Black
2600 x 1000 / **NA** 15936 / **SA** 15956



□ **AC MOTION ONE Black**

2600 x 1000



ACRYLIC-LINE abrasion-resistant

AC MOTION ONE

Product characteristics

	NA	SA
Base material	ABS	
Surface material	PMMA	
Material thickness mm	0,7	0,83
Max. relief height mm	1,1	1,23
Temperature stability	up to 60 °C	
Wet room suitability	■■■■■	
Abrasion resistance	■■■■■□	
Rolled packable	✓	✓

Extra equipment

	NA	SA
Special formats	On request	
Further thicknesses	—	—
Cuttings	✓	✓
Magnetic from 3 sheets	✓	
PVA pre-treatment	✓	—

Processing

	NA	SA
Cutting, punching	✓	✓
Drilling	✓	✓
Sawing, milling	✓	—
Laser cutting	✓	✓
Hot bending	✓	—
PVA compressible	✓	—
Smallest bending radius	150 mm	150 mm

Accessories

SIBUKLE	Spatula A2
Politur-Kit	available
Farbgleiche Kanten	available

Special colors

On request





Photo: GARANTküche



AC MOTION TWO White
2600 x 1000 / **NA** 15755 / **SA** 15764



AC MOTION TWO Black
2600 x 1000 / **NA** 15754 / **SA** 15763

ACRYLIC-LINE abrasion-resistant

AC MOTION TWO

2600 x 1000

Product characteristics

	NA	SA
Base material	ABS	
Surface material	PMMA	
Material thickness mm	0,7	0,83
Max. relief height mm	1,1	1,23
Temperature stability	up to 60 °C	
Wet room suitability	■■■■■	
Abrasion resistance	■■■■■□	
Rolled packable	✓	✓

Processing

	NA	SA
Cutting, punching	✓	✓
Drilling	✓	✓
Sawing, milling	✓	—
Laser cutting	✓	✓
Hot bending	✓	—
PVA compressible	✓	—
Smallest bending radius	150 mm	150 mm

Accessories

SIBUKLE	Spatula A2
Politur-Kit	available
Farbgleiche Kanten	available

Extra equipment

	NA	SA
Special formats	On request	
Further thicknesses	—	—
Cuttings	✓	✓
Magnetic from 3 sheets	✓	
PVA pre-treatment	✓	—

Special colors

On request

TRANSLUCENT- LINE



TL LINEA 104x62 OLD Platin
2600 x 1000 / **NA** 18434 / **SA** 18607



TL LINEA 104x62 SILENT Gold
2600 x 1000 / **NA** 18605 / **SA** 18606



□
TL LINEA
104 x 62 SILENT Gold

Photo: Ariadna de Raadt

2600 x 1000



TRANSLUCENT-LINE

TL LINEA

Product characteristics

	NA	SA
Base material	HIPS	
Surface material	Print	
Material thickness mm	1,5	1,63
Temperature stability	up to 60 °C	
Wet room suitability	■■■□	
Abrasion resistance	■■■■■□	
Rolled packable	✓	✓

Processing

	NA	SA
Cutting, punching	✓	✓
Drilling	✓	✓
Sawing, milling	✓	—
Laser cutting	✓	✓
Hot bending	✓	—
PVA compressible	—	—
Smallest bending radius	240 mm	240 mm

Extra equipment

	NA	SA
Special formats	On request	
Further thicknesses	—	—
Cuttings	✓	✓
Magnetic	—	
PVA pre-treatment	—	—

Accessories

SIBUKLE	—
---------	---

Special colors

On request





□
TL LINEA
104 x 62 OLD Platin

PUNCH- LINE / 3D



PRD

PL3D Q-10-30 OLD Platin/Silver
2600 x 1000 / **NA** 17833 / **SA** 17857



□
PL3D Q-10-30
OLD Platin/Silver

2600 x 1000



PUNCH-LINE / 3D

PL3D Q-10-30

Product characteristics

	NA	SA
Base material	APET, HIPS	
Surface material	Print	
Material thickness mm	1,3	1,43
Temperature stability	up to 50 °C	
Wet room suitability	■■■□	
Abrasion resistance	■■■■■□	
Rolled packable *	✓	✓

* Design sheets are to be rolled with the patterned side on the inside (applies for both the NA and SA versions). We recommend that not more than 3 sheets be rolled per carton (480 x 480 mm). (Up to 40° C)

** Up to 40° C

Processing

	NA	SA
Cutting, punching	✓	✓
Drilling	✓	✓
Sawing, milling	✓	—
Laser cutting	✓	✓
Hot bending	✓	—
PVA compressible	—	—
Smallest bending radius **	300 mm	300 mm

Extra equipment

	NA	SA
Special formats	—	—
Further thicknesses	—	—
Cuttings	✓	✓
Magnetic from 3 sheets	✓	
PVA pre-treatment	—	—

Accessories

SIBUKLE	—
---------	---

Special colors

On request

+ ▾



□
PL3D H-10-30
Pearl White PF/Gold



PL3D H-10-30 Pearl White PF/Gold
2600 x 1000 / **NA** 17832 / **SA** 17856

PUNCH-LINE / 3D

PL3D H-10-30

2600 x 1000

Product characteristics

	NA	SA
Base material	APET, HIPS	
Surface material	Print	
Material thickness mm	1,3	1,43
Temperature stability	up to 50 °C	
Wet room suitability	■■■■□	
Abrasion resistance	■■■■■■■	
Rolled packable *	✓	✓

* Design sheets are to be rolled with the patterned side on the inside (applies for both the NA and SA versions).
We recommend that not more than 3 sheets be rolled per carton (480 x 480 mm). (Up to 40° C)

** Up to 40° C

Processing

	NA	SA
Cutting, punching	✓	✓
Drilling	✓	✓
Sawing, milling	✓	—
Laser cutting	✓	✓
Hot bending	✓	—
PVA compressible	—	—
Smallest bending radius **	300 mm	300 mm

Extra equipment

	NA	SA
Special formats	—	—
Further thicknesses	—	—
Cuttings	✓	✓
Magnetic from 3 sheets	✓	
PVA pre-treatment	—	—

Accessories

SIBUKLE	—
---------	---

Special colors

On request





PL3D ROSES Pearl White PF/Gold
2600 x 1000 / **NA** I6443 / **SA** I6444



PL3D ROSES Silver PF/Silver
2600 x 1000 / **NA** I3917 / **SA** I3919



PL3D ROSES Silver PF/Silver

Photo: Minotti

2600 x 1000



PUNCH-LINE / 3D

PL3D ROSES

Product characteristics

	NA	SA
Base material	APET / HIPS	
Surface material	Print	
Material thickness mm	1,3	1,43
Temperature stability	up to 50 °C	
Wet room suitability	■■■■□	
Abrasion resistance	■■■■■■■	
Rolled packable *	✓	✓

* Design sheets are to be rolled with the patterned side on the inside (applies for both the NA and SA versions). We recommend that not more than 3 sheets be rolled per carton (480 x 480 mm). (Up to 40° C)

** Up to 40° C

Processing

	NA	SA
Cutting, punching	✓	✓
Drilling	✓	✓
Sawing, milling	✓	—
Laser cutting	✓	✓
Hot bending	—	—
PVA compressible	—	—
Smallest bending radius **	300 mm	300 mm

Extra equipment

	NA	SA
Special formats	—	—
Further thicknesses	—	—
Cuttings	✓	✓
Magnetic from 3 sheets	✓	
PVA pre-treatment	—	—

Accessories

SIBUKLE	—
---------	---

Special colors

On request



□ PL3D Q 10-40-40 Silver PF/Silver



PL3D Q 10-40-40 Silver PF/Silver
2600 x 1000 / **NA** 10052 / **SA** 10053

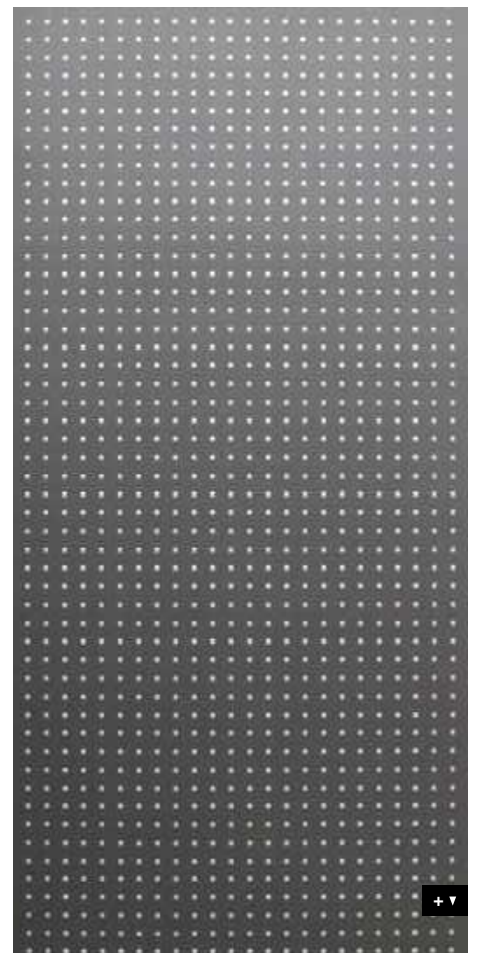


PL3D Q 10-40-40 Smoke PF TI/Silver matt
2600 x 1000 / **NA** 12519 / **SA** 12557

PUNCH-LINE / 3D

PL3D Q 10-40-40

2600 x 1000



Product characteristics

	NA	SA
Base material	APET / HIPS	
Surface material	Print	
Material thickness mm	1,3	1,43
Temperature stability	up to 50 °C	
Wet room suitability	■■■■□	
Abrasion resistance	■■■■■■■	
Rolled packable *	✓	✓

* Design sheets are to be rolled with the patterned side on the inside (applies for both the NA and SA versions).
We recommend that not more than 3 sheets be rolled per carton (480 x 480 mm). (Up to 40° C)

** Up to 40° C

Processing

	NA	SA
Cutting, punching	✓	✓
Drilling	✓	✓
Sawing, milling	✓	—
Laser cutting	✓	✓
Hot bending	✓	—
PVA compressible	—	—
Smallest bending radius **	300 mm	300 mm

Extra equipment

	NA	SA
Special formats	—	—
Further thicknesses	—	—
Cuttings	✓	✓
Magnetic from 3 sheets	✓	
PVA pre-treatment	—	—

Accessories

SIBUKLE	—
---------	---

Special colors

On request

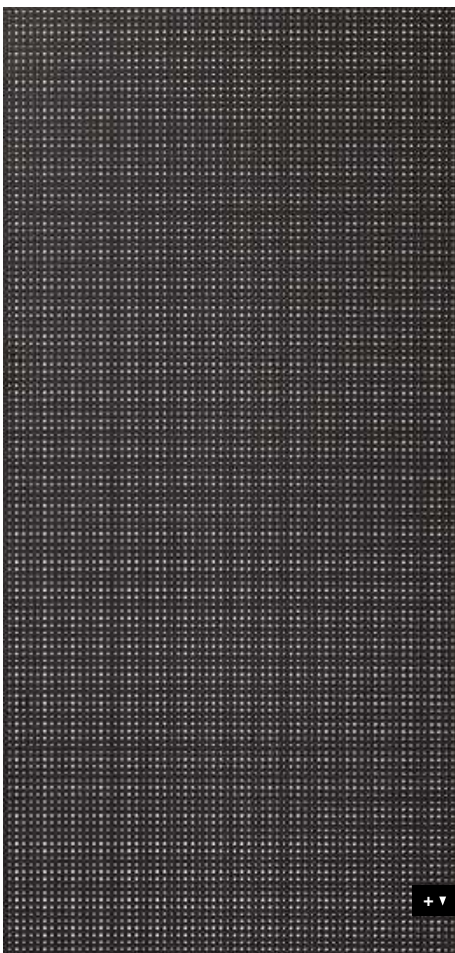


PL3D Q 5-15-15 Black TI/Silver
2600 x 1000 / **NA** 12384 / **SA** 12549



□
PL3D Q 5-15-15
Black TI/Silver

2600 x 1000



PUNCH-LINE / 3D

PL3D Q 5-15-15

Product characteristics

	NA	SA
Base material	APET / HIPS	
Surface material	Print	
Material thickness mm	1,3	1,43
Temperature stability	up to 50 °C	
Wet room suitability	■■■□	
Abrasion resistance	■■■■■■■	
Rolled packable *	✓	✓

* Design sheets are to be rolled with the patterned side on the inside (applies for both the NA and SA versions). We recommend that not more than 3 sheets be rolled per carton (480 x 480 mm). (Up to 40° C)
** Up to 40° C

Processing

	NA	SA
Cutting, punching	✓	✓
Drilling	✓	✓
Sawing, milling	✓	—
Laser cutting	✓	✓
Hot bending	✓	—
PVA compressible	—	—
Smallest bending radius **	300 mm	300 mm

Extra equipment

	NA	SA
Special formats	—	—
Further thicknesses	—	—
Cuttings	✓	✓
Magnetic from 3 sheets	✓	
PVA pre-treatment	—	—

Accessories

SIBUKLE	—
---------	---

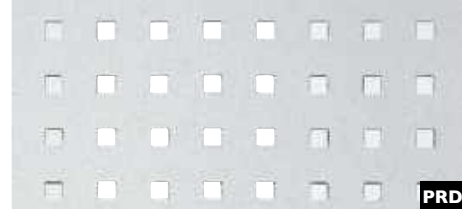
Special colors

On request



□
PL Q 5-15-15
Silver PF

Photo: © fotolia.com



PRD

PL Q 5-15-15 Silver PF
2600 x 1000 / **NA** 10986 / **SA** 10988

PUNCH-LINE

PL Q 5-15-15

Product characteristics

	NA	SA
Base material	HIPS	
Surface material	Print	
Material thickness mm	1,0	1,13
Temperature stability	up to 60 °C	
Wet room suitability	■■■■■	
Abrasion resistance	■■■■■■■	
Rolled packable	✓	✓

Processing

	NA	SA
Cutting, punching	✓	✓
Drilling	✓	✓
Sawing, milling	✓	—
Laser cutting	✓	✓
Hot bending	✓	—
PVA compressible	—	—
Smallest bending radius	150 mm	150 mm

Extra equipment

	NA	SA
Special formats	On request	
Further thicknesses	up to 2 mm	
Cuttings	✓	✓
Magnetic	—	
PVA pre-treatment	—	—

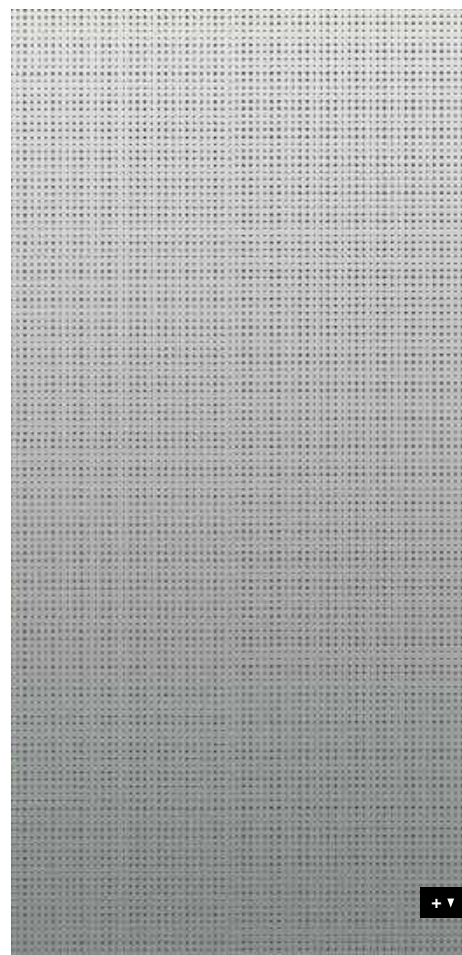
Accessories

SIBUKLE	—
---------	---

Special colors

On request

2600 x 1000



+ ▼

FABRIC- LINE

□
FL PELO Marabu



□
FL PELO Marabu



FL PELO Marabu
2600 x 1000 / **NA** 14309 / **SA** 14325



FABRIC-LINE FL PELO

2600 x 1000



Product characteristics

	NA	SA
Base material	HIPS	
Surface material	PET	
Material thickness mm	1,7	1,83
Temperature stability	up to 60 °C	
Wet room suitability	■■■■	
Rolled packable *	✓	✓

* Design sheets to be rolled with the decor side outwardly (both – NA and SA version). We recommend rolling not more than 3 sheets per carton (480 x 480 mm).

Processing

	NA	SA
Cutting, punching	✓	✓
Drilling	✓	✓
Sawing	✓	–
Laser cutting	✓	✓
Hot bending	✓	–
PVA compressible	✓	–
Smallest bending radius	150 mm	150 mm

Extra equipment

	NA	SA
Special formats	On request	
Further thicknesses	✓	✓
Cuttings	✓	✓
Magnetic from 3 sheets	✓	
PVA pre-treatment	✓	–

Accessories

SIBUKLE	Spatula A1
---------	------------

Special colors

–



FL VELVET Bordeaux
2600 x 1000 / **NA** 21436 / **SA** 21450



FL VELVET Avocado
2600 x 1000 / **NA** 21437 / **SA** 21451



FL VELVET Curry
2600 x 1000 / **NA** 21438 / **SA** 21452



FL VELVET Mocha
2600 x 1000 / **NA** 21439 / **SA** 21453



FL VELVET Coal
2600 x 1000 / **NA** 21440 / **SA** 21454



FL VELVET Pearl
2600 x 1000 / **NA** 21441 / **SA** 21455



FL VELVET Volcano
2600 x 1000 / **NA** 21442 / **SA** 21456



Photo: Stefan Röhler modul-a

texture selectable see page 122/123

FABRIC-LINE FL VELVET

Product characteristics

	NA	SA
Base material	HIPS	
Surface material	PET	
Material thickness mm	1,7	1,83
Temperature stability	up to 60 °C	
Wet room suitability	■■■■■	
Rolled packable *	✓	✓

* Design sheets to be rolled with the decor side outwardly (both – NA and SA version). We recommend rolling not more than 3 sheets per carton (480 x 480 mm).

Processing

	NA	SA
Cutting, punching	✓	✓
Drilling	✓	✓
Sawing	✓	—
Laser cutting	✓	✓
Hot bending	✓	—
PVA compressible	✓	—
Smallest bending radius	150 mm	150 mm

Extra equipment

	NA	SA
Special formats	On request	
Further thicknesses	✓	✓
Cuttings	✓	✓
Magnetic from 3 sheets **	✓	
PVA pre-treatment	✓	—

** Ground must be a SIBU metal foil SA (ref. 17637, self adhesive).

Accessories

SIBUKLE	Spatula AI
---------	------------

Special colors

—



□
FL GRASSVELVELT Avocado Antigrav



FL VELVET Bordeaux Antigrav
2600 x 1000 / **NA** 21443



FL VELVET Avocado Antigrav
2600 x 1000 / **NA** 21444

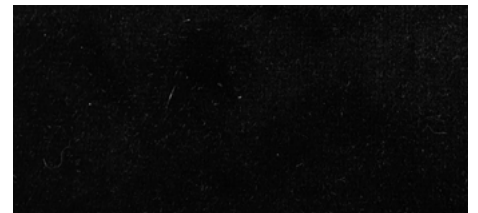


FL VELVET Curry Antigrav
2600 x 1000 / **NA** 21445



FL VELVET Mocha Antigrav
2600 x 1000 / **NA** 21446

texture selectable see page 122/123



FL VELVET Coal Antigrav
2600 x 1000 / **NA** 21447



FL VELVET Pearl Antigrav
2600 x 1000 / **NA** 21448



FL VELVET Volcano Antigrav
2600 x 1000 / **NA** 21449

FABRIC-LINE

FL VELVET Antigrav

Product characteristics

	NA
Base material	PET fibres
Surface material	PET
Material thickness mm	3,8
Temperature stability	up to 60 °C
Wet room suitability	■■■■■
Rolled packable	—

Processing

	NA
Cutting, punching	✓
Drilling	✓
Sawing	✓
Laser cutting	✓
Hot bending	—
PVA compressible	✓
Smallest bending radius	1000 mm

Extra equipment

	NA
Special formats	On request
Further thicknesses	On request
Cuttings	✓
Magnetic from 3 sheets *	✓
PVA pre-treatment	—

* Ground must be a SIBU metal foil SA (ref. 17637, self adhesive).

Accessories

SIBUKLE	Spatula A2
---------	------------

Special colors

On request

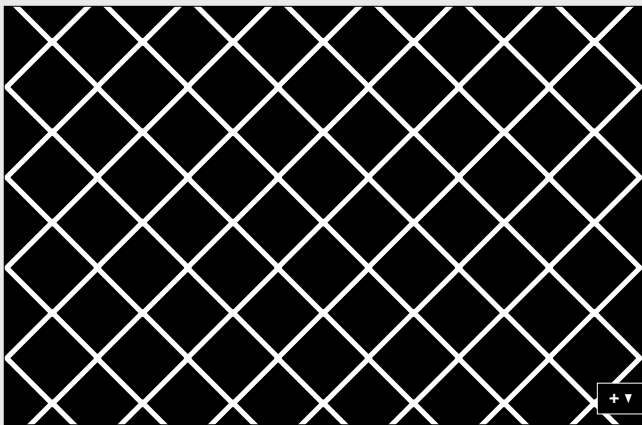
SIBU VELVET ARTICLE FROM THE FABRIC LINE

DESIGN AND COLOR SELECTABLE

Mix the design and color to your own taste – that's how you create a SIBU design panel, that's totally fitting to you

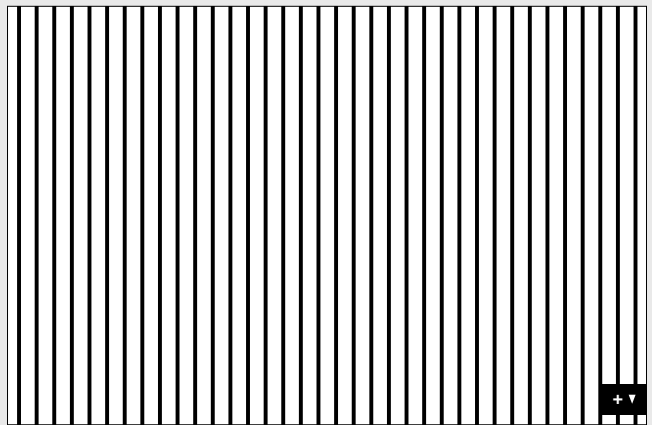
and your project! Your own individual SIBU design panel is available from 20 sheets.

CORD



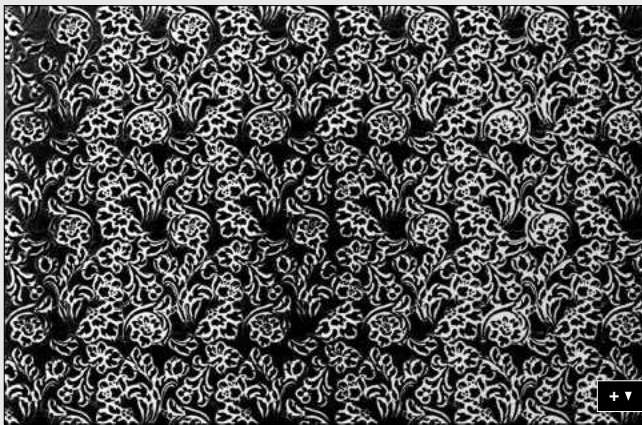
1000

PIANO



1000

FLORAL



1000

IMPERIAL



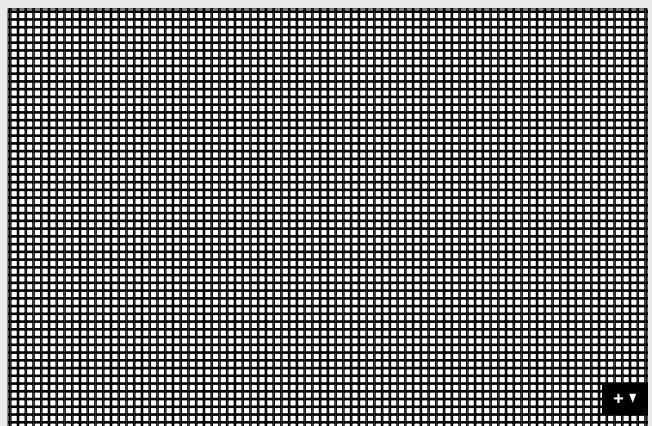
1000

ALISE



1000

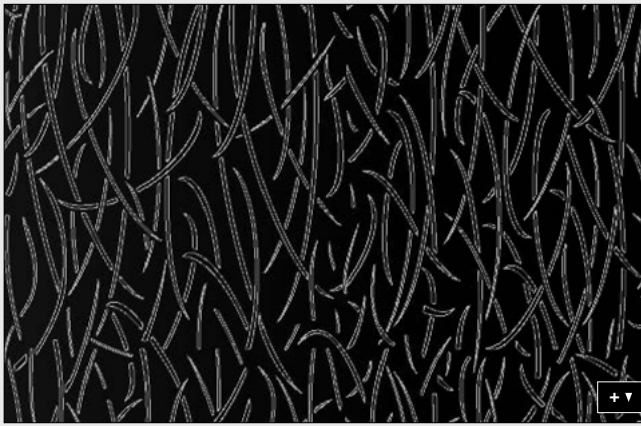
SQUARE 2



1000

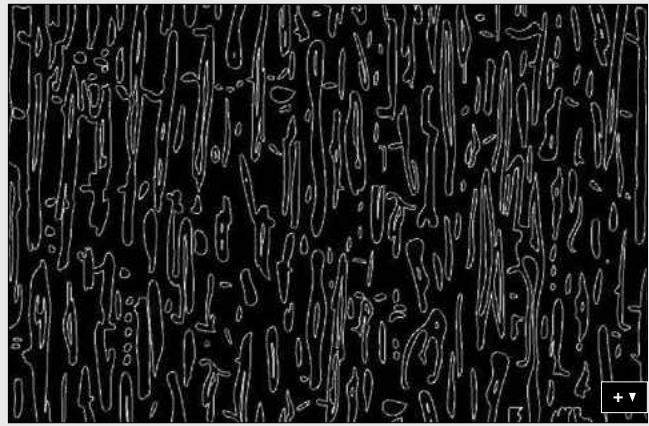


GRAS



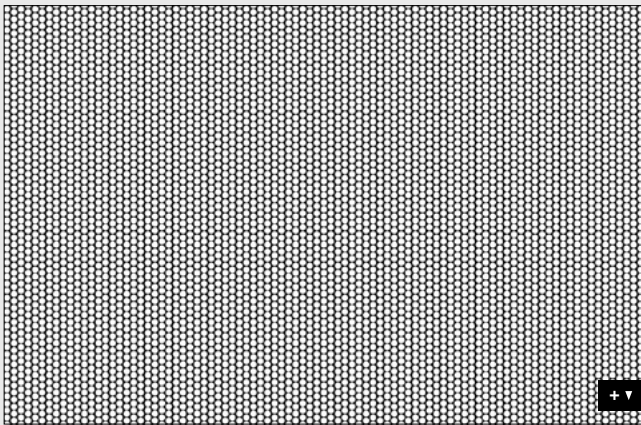
1000

BARK



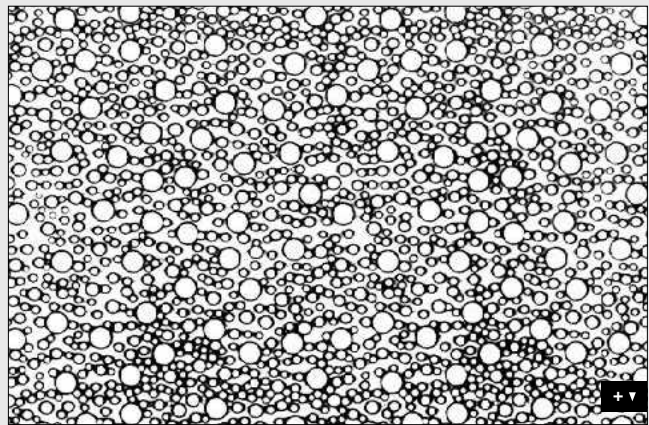
1000

CIRCLE



1000

DROPS



1000



entire panel length not shown in image

ANTIGRAV



PRD

LL CORD Stony Ground Antigrav
2600 x 1000 / **NA** 19766



PRD

LL CORD Dove Tale Antigrav
2600 x 1000 / **NA** 19765



PRD

LL CORD Charcoal Light Antigrav
2600 x 1000 / **NA** 19764



□ LL CORD Dove Tale Antigrav

Photo: iStock.com

2600 x 1000



+ ▾

LEATHER-LINE

LL CORD Antigrav

Product characteristics

	NA
Base material	PP-glass fibres
Surface material	PU-leather
Material thickness mm	3,8
Max. relief height mm	6,2
Temperature stability	up to 60 °C
Wet room suitability	■■■■■
Rolled packable	—

Processing

	NA
Cutting, punching	✓
Drilling	✓
Sawing	✓
Laser cutting	✓
Hot bending	—
PVA compressible	✓
Smallest bending radius	1000 mm

Extra equipment

	NA
Special formats	—
Further thicknesses	—
Cuttings	✓
Magnetic from 3 sheets *	✓
PVA pre-treatment	—

* Ground must be a SIBU metal foil SA (ref. 17637, self adhesive).

Accessories

SIBUKLE	Spatula A2
---------	------------

Special colors

On request



□ LL Lemon Yellow Antigrav



PR+

LL Lemon Yellow Antigrav
2600 x 1000 / **NA** 20425



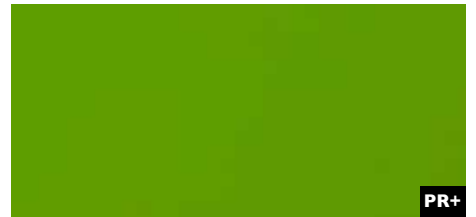
PR+

LL Pumpkin Orange Antigrav
2600 x 1000 / **NA** 20424



PR+

LL Cobalt Blue Antigrav
2600 x 1000 / **NA** 20422



PR+

LL Apple Green Antigrav
2600 x 1000 / **NA** 20423

LEATHER-LINE

LEATHER-LINE Antigrav

Product characteristics

	NA
Base material	PP-glass fibres
Surface material	PU-leather
Material thickness mm	3,8
Temperature stability	up to 60 °C
Wet room suitability	■■■■
Rolled packable	—

Processing

	NA
Cutting, punching	✓
Drilling	✓
Sawing	✓
Laser cutting	✓
Hot bending	—
PVA compressible	✓
Smallest bending radius	1000 mm

Extra equipment

	NA
Special formats	On request
Further thicknesses	—
Cuttings	✓
Magnetic from 3 sheets *	✓
PVA pre-treatment	—

Accessories

SIBUKLE	Spatula A2
---------	------------

Special colors

On request

* Ground must be a SIBU metal foil SA (ref. 17637, self adhesive).



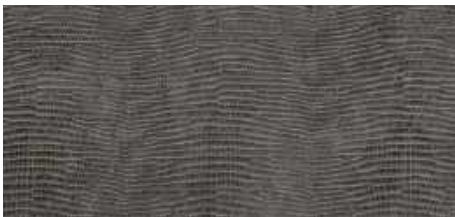
LL LEGUAN Silver Antigrav
2600 x 1000 / **NA** 19781



LL LEGUAN Gold Antigrav
2600 x 1000 / **NA** 19778



LL LEGUAN Copper Antigrav
2600 x 1000 / **NA** 19777



LL LEGUAN Nero Antigrav
2600 x 1000 / **NA** 19779



LL LEGUAN Silk Antigrav
2600 x 1000 / **NA** 19780



LL LEGUAN Bianco Antigrav
2600 x 1000 / **NA** 19775



LL LEGUAN Blue Antigrav
2600 x 1000 / **NA** 19776



Photo: Fotolia.com

LEATHER-LINE

LL LEGUAN Antigrav

Product characteristics

	NA
Base material	PP-glass fibres
Surface material	PU-leather
Material thickness mm	3,4
Temperature stability	up to 60 °C
Wet room suitability	■■■□
Rolled packable	—

Processing

	NA
Cutting, punching	✓
Drilling	✓
Sawing	✓
Laser cutting	✓
Hot bending	—
PVA compressible	✓
Smallest bending radius	1000 mm

Extra equipment

	NA
Special formats	On request
Further thicknesses	—
Cuttings	✓
Magnetic from 3 sheets *	✓
PVA pre-treatment	—

* Ground must be a SIBU metal foil SA (ref. 17637, self adhesive).

Accessories

SIBUKLE	Spatula A2
---------	------------

Special colors

—



□ LL Charcoal Dark Antigrav



LL Charcoal Dark Antigrav
2600 x 1000 / **NA** 19762



LL Charcoal Light Antigrav
2600 x 1000 / **NA** 19763



LL Dove Tale Antigrav
2600 x 1000 / **NA** 19769



LL London Clay Antigrav
2600 x 1000 / **NA** 19782



LL Stony Ground Antigrav
2600 x 1000 / **NA** 19794

LEATHER-LINE

LEATHER-LINE Antigrav

Product characteristics

	NA
Base material	PP-glass fibres
Surface material	PU-leather
Material thickness mm	3,8
Temperature stability	up to 60 °C
Wet room suitability	■■■■■
Rolled packable	—

Processing

	NA
Cutting, punching	✓
Drilling	✓
Sawing	✓
Laser cutting	✓
Hot bending	—
PVA compressible	✓
Smallest bending radius	1000 mm

Extra equipment

	NA
Special formats	On request
Further thicknesses	—
Cuttings	✓
Magnetic from 3 sheets *	✓
PVA pre-treatment	—

Accessories

SIBUKLE	Spatula A2
---------	------------

Special colors

On request

* Ground must be a SIBU metal foil SA (ref. 17637, self adhesive).



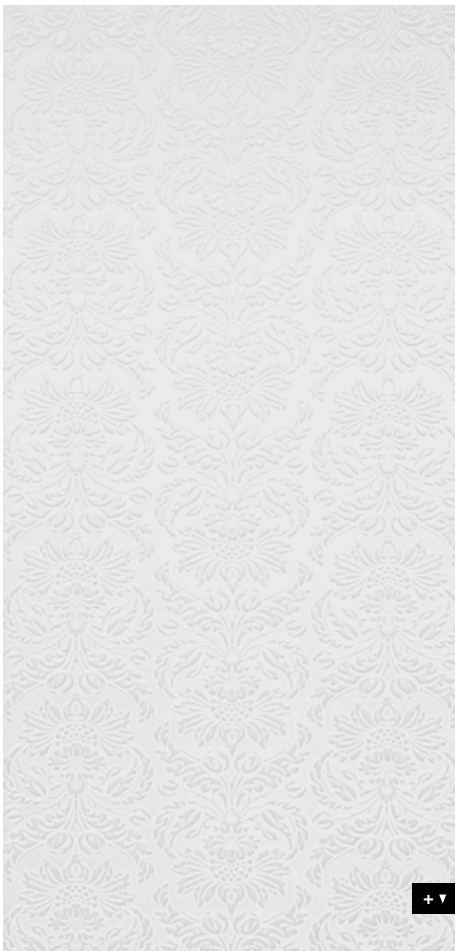
FR

LL IMPERIAL White Antigrav
2600 x 1000 / NA 19771



□
LL IMPERIAL White Antigrav

2600 x 1000



+ ▼

LEATHER-LINE

LL IMPERIAL Antigrav

Product characteristics

	NA
Base material	PP-glass fibres
Surface material	PU-leather
Material thickness mm	4,1
Max. relief height mm	5,7
Temperature stability	up to 60 °C
Wet room suitability	■■■■■
Rolled packable	—

Processing

	NA
Cutting, punching	✓
Drilling	✓
Sawing	✓
Laser cutting	✓
Hot bending	—
PVA compressible	✓
Smallest bending radius	1000 mm

Extra equipment

	NA
Special formats	—
Further thicknesses	—
Cuttings	✓
Magnetic from 3 sheets *	✓
PVA pre-treatment	—

Accessories

SIBUKLE	Spatula A2
---------	------------

Special colors

On request



LL ANTIGUA Gold Antigrav
2600 x 1000 / NA 19760

□
LL ANTIGUA Gold Antigrav

LEATHER-LINE

LL ANTIGUA Gold Antigrav

Product characteristics

	NA
Base material	PP-glass fibres
Surface material	PU-leather
Material thickness mm	4
Temperature stability	up to 60 °C
Wet room suitability	■■■□
Rolled packable	—

Processing

	NA
Cutting, punching	✓
Drilling	✓
Sawing	✓
Laser cutting	✓
Hot bending	—
PVA compressible	✓
Smallest bending radius	1000 mm

Extra equipment

	NA
Special formats	On request
Further thicknesses	—
Cuttings	✓
Magnetic from 3 sheets *	✓
PVA pre-treatment	—

* Ground must be a SIBU metal foil SA (ref. 17637, self adhesive).

Accessories

SIBUKLE	Spatula A2
---------	------------

Special colors

—



PRS*

DM CEMENT Dark Antigrav
2600 x 1000 / NA 19798



□
DM CEMENT Dark Antigrav

Photo: © shutterstock.com

2600 x 1000



DECO-LINE

DM CEMENT Dark Antigrav

Product characteristics

	NA
Base material	PP-glass fibres
Surface material	impregnated paper
Material thickness mm	3,3
Temperature stability	up to 60 °C
Wet room suitability	■■■□
Abrasion resistance	■■■■□□
Rolled packable	—

Processing

	NA
Cutting, punching	✓
Drilling	✓
Sawing, milling	✓
Laser cutting	✓
Hot bending	—
PVA compressible	✓
Smallest bending radius	1000 mm

Extra equipment

	NA
Special formats	On request
Further thicknesses	—
Cuttings	✓
Magnetic from 3 sheets**	✓
PVA pre-treatment	—

Accessories

SIBUKLE	Spatula A2
---------	------------

Special colors

—



□
DM CEMENT Light Antigrav



PR+*

DM CEMENT Light Antigrav
2600 x 1000 / NA 19563

DECO-LINE

DM CEMENT Light Antigrav

2600 x 1000

Product characteristics

	NA
Base material	PP-glass fibres
Surface material	impregnated paper
Material thickness mm	3,1
Temperature stability	up to 60 °C
Wet room suitability	■■■□
Abrasion resistance	■■■■■□
Rolled packable	—

Processing

	NA
Cutting, punching	✓
Drilling	✓
Sawing, milling	✓
Laser cutting	✓
Hot bending	—
PVA compressible	✓
Smallest bending radius	1000 mm

Extra equipment

	NA
Special formats	On request
Further thicknesses	—
Cuttings	✓
Magnetic from 3 sheets **	✓
PVA pre-treatment	—

Accessories

SIBUKLE	Spatula A2
---------	------------

Special colors

—

* Prior to printing a corona or plasma treatment has to be carried out.
Upon request available in pre-treated version.

** Ground must be a SIBU metal foil SA (ref. 17637, self adhesive).



DM CERAMIC Brown Antigrav
2600 x 1000 / **NA** 19564



DM CERAMIC Grey Antigrav
2600 x 1000 / **NA** 19565



DM CERAMIC Brown/Grey brushed 8L Antigrav
2600 x 1000 / **NA** 19586



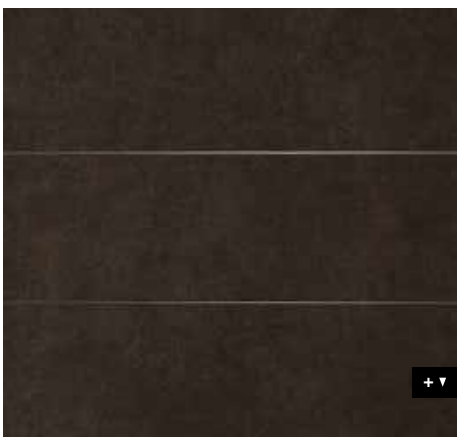
□
DM CERAMIC Brown Antigrav

Photo: © fotolia.com

2600 x 1000 **DM CERAMIC Grey Antigrav**



DM CERAMIC Brown/Grey brushed 8L



DECO-LINE

DM CERAMIC Antigrav

Product characteristics

	NA
Base material	PP-glass fibres
Surface material	impregnated paper
Material thickness mm	3,3
Temperature stability	up to 60 °C
Wet room suitability	■■■□
Abrasion resistance	■■■□□□
Rolled packable	—

Processing

	NA
Cutting, punching	✓
Drilling	✓
Sawing, milling	✓
Laser cutting	✓
Hot bending	—
PVA compressible	✓
Smallest bending radius	1000 mm

Extra equipment

	NA
Special formats	On request
Further thicknesses	—
Cuttings	✓
Magnetic from 3 sheets **	✓
PVA pre-treatment	—

Accessories

SIBU SILICON 1.4A	✓
SIBUKLE	Spatula A2

Special colors

—



DM MARBLE White Antigrav
2600 x 1000 / NA 19566

DECO-LINE

DM MARBLE White Antigrav

Product characteristics

	NA
Base material	PP-glass fibres
Surface material	impregnated paper
Material thickness mm	3,1
Temperature stability	up to 60 °C
Wet room suitability	■■■■□
Abrasion resistance	■■■■■□
Rolled packable	—

Processing

	NA
Cutting, punching	✓
Drilling	✓
Sawing, milling	✓
Laser cutting	✓
Hot bending	—
PVA compressible	✓
Smallest bending radius	1000 mm

Extra equipment

	NA
Special formats	On request
Further thicknesses	—
Cuttings	✓
Magnetic from 3 sheets **	✓
PVA pre-treatment	—

Accessories

SIBUKLE	Spatula A2
---------	------------

Special colors

—

2600 x 1000



* Prior to printing a corona or plasma treatment has to be carried out.
Upon request available in pre-treated version.

** Ground must be a SIBU metal foil SA (ref. 17637, self adhesive).



PRS*

DM Travertin Antigrav
2600 x 1000 / NA 19567



□
DM Travertin Antigrav

2600 x 1000



DECO-LINE

DM Travertin Antigrav

Product characteristics

	NA
Base material	PP-glass fibres
Surface material	impregnated paper
Material thickness mm	3,3
Temperature stability	up to 60 °C
Wet room suitability	■■■□
Abrasion resistance	■■■■□□
Rolled packable	—

Processing

	NA
Cutting, punching	✓
Drilling	✓
Sawing, milling	✓
Laser cutting	✓
Hot bending	—
PVA compressible	✓
Smallest bending radius	1000 mm

Extra equipment

	NA
Special formats	On request
Further thicknesses	—
Cuttings	✓
Magnetic from 3 sheets**	✓
PVA pre-treatment	—

Accessories

SIBUKLE	Spatula A2
---------	------------

Special colors

—

+ ▼



LL LACE Black/Platin Antigrav
2600 x 1000 / NA 19772



LL LACE White/Black Antigrav
2600 x 1000 / NA 19773



LL LACE White/Vintage Brown Antigrav
2600 x 1000 / NA 19774



□
LL LACE
Black/Platin
Antigrav

Photo: Fotolia.com

2600 x 1000



LEATHER-LINE

LL LACE Antigrav

Product characteristics

	NA
Base material	PP-glass fibres
Surface material	PET
Material thickness mm	3,4
Material thickness mm White/Black	3,6
Temperature stability	up to 60 °C
Wet room suitability	■■■□
Rolled packable	—

Processing

	NA
Cutting, punching	✓
Drilling	✓
Sawing	✓
Laser cutting	✓
Hot bending	—
PVA compressible	✓
Smallest bending radius	150 mm

Extra equipment

	NA
Special formats	On request
Further thicknesses	—
Cuttings	✓
Magnetic from 3 sheets *	✓
PVA pre-treatment	—

Accessories

SIBU SILICON I.4A	✓
SIBUKLE	Spatula A2

Special colors

—	—
---	---

* Ground must be a SIBU metal foil SA (ref. 17637, self adhesive).



PRS*

WL Nutwood Antigrav
2600 x 1000 / NA 19568



PRS*

WL Nutwood Country Antigrav
2600 x 1000 / NA 19569



PRS*

WL Maple Alpine Antigrav
2600 x 1000 / NA 19570



□
WL Maple Alpine Antigrav

Photo: © fotolia.com

WOOD-LINE

WL Nutwood Antigrav

Product characteristics

	NA
Base material	PP-glass fibres
Surface material	impregnated paper
Material thickness mm	3,3
Temperature stability	up to 60 °C
Wet room suitability	■■■□
Abrasion resistance	■■■■□□
Rolled packable	—

Processing

	NA
Cutting, punching	✓
Drilling	✓
Sawing, milling	✓
Laser cutting	✓
Hot bending	—
PVA compressible	✓
Smallest bending radius	1000 mm

Extra equipment

	NA
Special formats	On request
Further thicknesses	—
Cuttings	✓
Magnetic from 3 sheets**	✓
PVA pre-treatment	—

Accessories

SIBUKLE	Spatula A2
---------	------------

Special colors

—



□
WL Wenge Wood Antigrav

Photo: © fotolia.com



PRS*

WL Wenge Wood Antigrav
2600 x 1000 / NA 19571

WOOD-LINE

WL Wenge Wood Antigrav

2600 x 1000

Product characteristics

	NA
Base material	PP-glass fibres
Surface material	impregnated paper
Material thickness mm OAK TREE	3,1
Material thickness mm Wenge Wood	3,3
Temperature stability	up to 60 °C
Wet room suitability	■■■□
Abrasion resistance	■■■□□□
Rolled packable	—

Processing

	NA
Cutting, punching	✓
Drilling	✓
Sawing, milling	✓
Laser cutting	✓
Hot bending	—
PVA compressible	✓
Smallest bending radius	1000 mm

Extra equipment

	NA
Special formats	On request
Further thicknesses	—
Cuttings	✓
Magnetic from 3 sheets**	✓
PVA pre-treatment	—

Accessories

SIBUKLE	Spatula A2
---------	------------

Special colors

—

* Prior to printing a corona or plasma treatment has to be carried out.
Upon request available in pre-treated version.

** Ground must be a SIBU metal foil SA (ref. 17637, self adhesive).

□
WL Carbonized Wood Antigrav





□ WL Carbonized Wood Antigrav



PRS*

WL Carbonized Wood Antigrav
2600 x 1000 / NA 20158

WOOD-LINE

WL Carbonized Wood Antigrav

2600 x 1000



Product characteristics

	NA
Base material	PP-glass fibres
Surface material	impregnated paper
Material thickness mm	3,3
Temperature stability	up to 60 °C
Wet room suitability	■■■■□
Abrasion resistance	■■■■□□
Rolled packable	—

Processing

	NA
Cutting, punching	✓
Drilling	✓
Sawing, milling	✓
Laser cutting	✓
Hot bending	—
PVA compressible	✓
Smallest bending radius	1000 mm

Extra equipment

	NA
Special formats	On request
Further thicknesses	—
Cuttings	✓
Magnetic from 3 sheets**	✓
PVA pre-treatment	—

Accessories

SIBUKLE	Spatula A2
---------	------------

Special colors

—

* Prior to printing a corona or plasma treatment has to be carried out.
Upon request available in pre-treated version.

** Ground must be a SIBU metal foil SA (ref. 17637, self adhesive).



