

# MONTAŻ ŚRUB ICAMBER

<https://www.youtube.com/watch?app=desktop&v=8Sr6rc3RH6Q>

(skopiuj adres YT, żeby obejrzeć film o montażu śrub regulujących kąt pochylenia koła)



## Adjustable Camber Bolt

Instructions for ICAMBER12 & ICAMBER14

- 1) Establish required adjustment by performing wheel alignment.
- 2) Raise and support vehicle off the ground, and remove wheels.
- 3) Remove original UPPER clevis bolt.

*Install bolt assembly in upper clevis hole only.*

- 4) Align bolt cam with small inner tabbed washer. (Fig 1)
- 5) Position bolt and washer with small inner tab located inside clevis hole, with washer flush to strut. (Fig 2)

Tabbed washer must be installed with the large outer tab facing STRUT for NEGATIVE camber adjustment range (Up to -1.75 degrees),

Tabbed washer must be installed with the large outer tab facing WHEEL for POSITIVE Camber adjustment range (Up to +1.75 degrees).

*Washer tabs must face horizontally.*

- 6) Temporarily tighten adjustable bolt to 50N/m or enough to bed washer spikes into strut. Slightly loosen lower clevis bolt.
- 7) Fit wheels and lower vehicle to ground, and initiate wheel alignment.
- 8) Rotate head of adjustable bolt to desired camber setting and tension both upper and lower bolts to specification.

ICAMBER12 Tension 88N/m  
ICAMBER14 Tension 105N/m

- 9) Check all fasteners for tension, and road test vehicle.

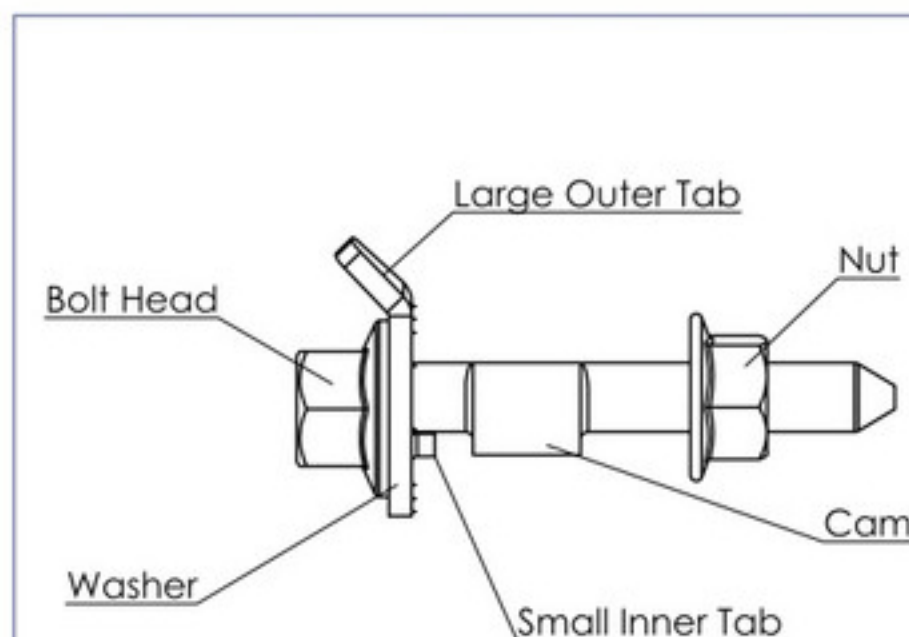


Fig 1

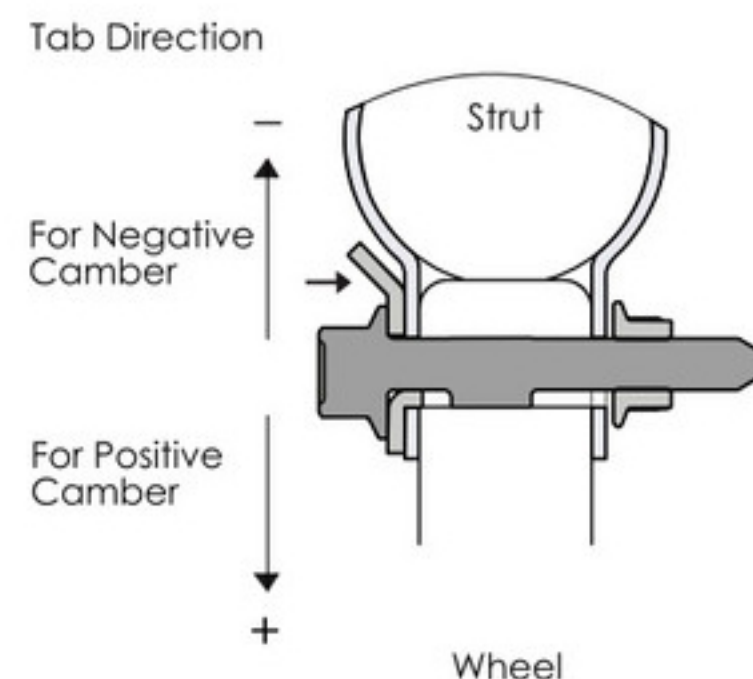


Fig 2

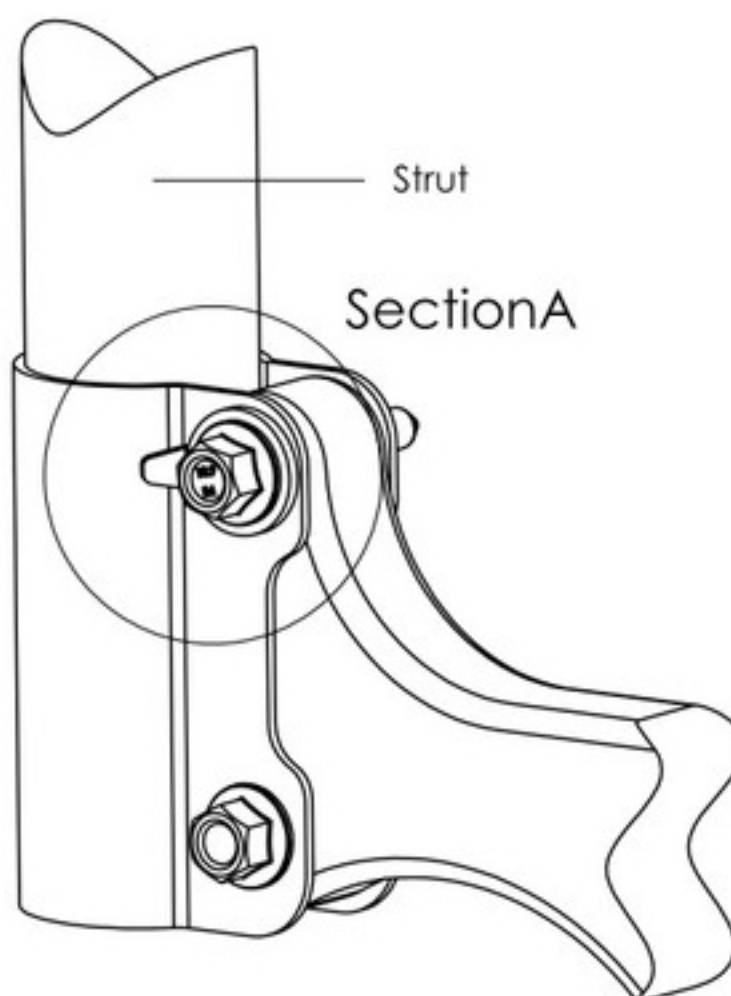


Fig 3

### Section A

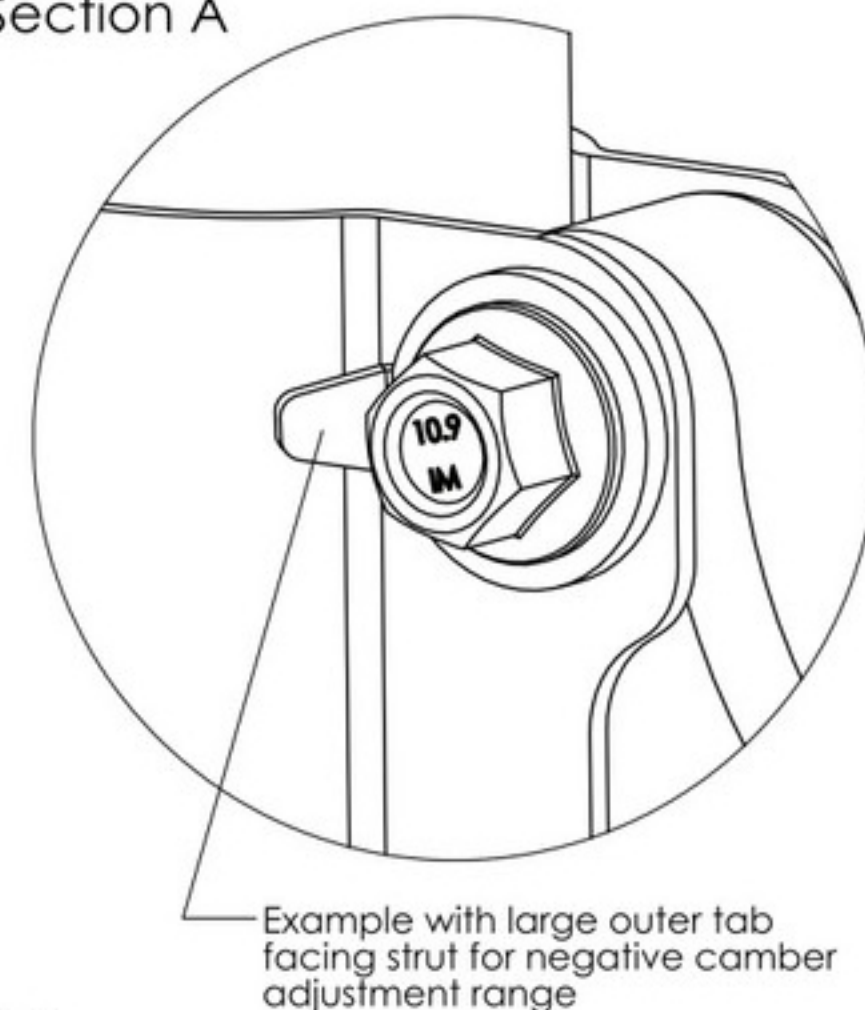


Fig 4