



**Dongguan Anhua Testing Technology Co., Ltd.**

## **CERTIFICATE OF EMC COMPLIANCE**

According to Directive: **2014/30/EU**

Ref. No.: AH2025051601

Product: Purple light spray comb  
Trade Name: N/A  
Applicant: Ruian Feiyue Craft Gift Factory  
Address: No. 9, Lane 7, Linyang Street, Linbei Village, Nanbin Street, Rui'an City, Wenzhou City, Zhejiang Province  
Manufacturer: Ruian Feiyue Craft Gift Factory  
Address: No. 9, Lane 7, Linyang Street, Linbei Village, Nanbin Street, Rui'an City, Wenzhou City, Zhejiang Province  
Model: CRY-982

The test sample of product has been passed, the test according to requirements of the following standards:

Standard(s):

EN IEC 55014-1-2021

EN IEC 55014-2-2021

EN IEC 61000-3-2:2019/A1:2021/A2:2024

EN 61000-3-3:2013/A1:2019/A2:2021

Test report(s) No.:

AH20250516E01

Based on the voluntary assessment of the product sample and technical file, we confirm that the above-mentioned product meets the requirements of the EU directive.

The CE mark as show below can be used, under the responsibility of the manufacturer or the importer, after completion of an EU declaration of conformity and compliance with all relevant EU directives.



Approved by:

Date :



**Dongguan Anhua Testing Technology Co., Ltd.**

Address: Room 401, Building 1, No. 35, Liaobu Jinyuan Road, Liaobu, Dongguan, Guangdong, China

Tel: 0769-86057700

Fax: 0769-86057700

www.anhua-lab.com

# EMC Test Report

Equipment under Test : Purple light spray comb

Model /Type : CRY-982

Listed Models : N/A

**Applicant** : Ruian Feiyue Craft Gift Factory

**Address** : No. 9, Lane 7, Linyang Street, Linbei Village, Nanbin Street, Rui'an City, Wenzhou City, Zhejiang Province

**Manufacturer** : Ruian Feiyue Craft Gift Factory

**Address** : No. 9, Lane 7, Linyang Street, Linbei Village, Nanbin Street, Rui'an City, Wenzhou City, Zhejiang Province

**Laboratory** : **Dongguan Anhua Testing Technology Co., Ltd.**

**Address** : Room 401, Building 1, No. 35, Liaobu Jinyuan Road, Liaobu, Dongguan, Guangdong, China

**Tel** : 0769-86057700

**Fax** : 0769-86057700

**Website** : www.anhua-lab.com

The test report merely corresponds to the test sample. It is not permitted to copy extracts of these test result without the written permission of the test laboratory.

<b>Test Result:</b>	<b>PASS</b>
---------------------	-------------

## TEST RESULT CERTIFICATION

**Applicant's name**.....: Ruian Feiyue Craft Gift Factory  
**Address**.....: No. 9, Lane 7, Linyang Street, Linbei Village, Nanbin Street, Rui'an City, Wenzhou City, Zhejiang Province  
**Manufacturer's Name**.....: Ruian Feiyue Craft Gift Factory  
**Address**.....: No. 9, Lane 7, Linyang Street, Linbei Village, Nanbin Street, Rui'an City, Wenzhou City, Zhejiang Province

### Product description

**Product name**.....: Purple light spray comb

**Test Model** .....: CRY-982

EN IEC 55014-1-2021

EN IEC 55014-2-2021

**Standards**.....: EN IEC 61000-3-2:2019/A1:2021/A2:2024  
EN 61000-3-3:2013/A1:2019/A2:2021

This device described above has been tested by Dongguan Anhua Testing Technology Co., Ltd., and the test results show that the equipment under test (EUT) is in compliance with the 2014/30/EU requirements. And it is applicable only to the tested sample identified in the report.

This report shall not be reproduced except in full, without the written approval of Dongguan Anhua Testing Technology Co., Ltd., this document may be altered or revised by Dongguan Anhua Testing Technology Co., Ltd., personal only, and shall be noted in the revision of the document.

**Date of Test**.....:

**Date (s) of performance of tests**.....: May.16, 2025 ~ May.23, 2025

**Date of Issue**.....: May.23, 2025

**Test Result**.....: **Pass**

**Testing Engineer** : Shichang Liu

**Technical Manager** : Baofeng Ma

**Authorized Signatory** : Fanyong Zeng

(Fanyong Zeng)

Table of Contents	Page
<b>1 . TEST SUMMARY</b>	<b>5</b>
1.1 TEST FACILITY	6
1.2 MEASUREMENT UNCERTAINTY	6
<b>2 . GENERAL INFORMATION</b>	<b>7</b>
2.1 GENERAL DESCRIPTION OF EUT	7
2.2 DESCRIPTION OF TEST MODES	8
2.3 DESCRIPTION OF TEST SETUP	9
2.4 DESCRIPTION TEST PERIPHERAL AND EUT PERIPHERAL	9
2.5 MEASUREMENT INSTRUMENTS LIST	10
<b>3 . EMC EMISSION TEST</b>	<b>13</b>
3.1 CONDUCTED EMISSION MEASUREMENT	13
3.1.1 POWER LINE CONDUCTED EMISSION	13
3.1.3 TEST PROCEDURE	14
3.1.4 TEST SETUP	14
3.1.5 EUT OPERATING CONDITIONS	14
3.1.6 TEST RESULTS	15
3.2 RADIATED EMISSION MEASUREMENT	17
3.2.1 LIMITS OF RADIATED EMISSION MEASUREMENT	17
3.2.2 LIMITS OF DISTURBANCE POWER MEASUREMENT	17
3.2.3 TEST PROCEDURE	17
3.2.4 TEST SETUP	18
3.2.5 EUT OPERATING CONDITIONS	19
3.2.6 TEST RESULTS(30MHz-1000MHz)	20
3.2.7 TEST RESULTS(30MHz ~300MHz)	22
3.3 HARMONICS CURRENT	23
3.3.1 LIMITS OF HARMONICS CURRENT	23
3.3.1.1 TEST PROCEDURE	24
3.3.1.2 EUT OPERATING CONDITIONS	24
3.3.1.3 TEST SETUP	24
3.3.2 TEST RESULTS	25
3.4 VOLTAGE FLUCTUATION AND FLICKERS	27
3.4.1 LIMITS OF VOLTAGE FLUCTUATION AND FLICKERS	27
3.4.1.1 TEST PROCEDURE	27
3.4.1.2 EUT OPERATING CONDITIONS	27
3.4.1.3 TEST SETUP	28
3.4.2 TEST RESULTS	28

Table of Contents	Page
<b>4 . EMC IMMUNITY TEST</b>	<b>29</b>
<b>4.1 STANDARD COMPLIANCE/ SERVIRITY LEVEL/ CRITERIA</b>	<b>29</b>
<b>4.2 GENERAL PERFORMANCE CRITERIA</b>	<b>30</b>
<b>4.3 GENERAL PERFORMANCE CRITERIA TEST SETUP</b>	<b>30</b>
<b>4.4 ESD TESTING</b>	<b>31</b>
<b>4.4.1 TEST SPECIFICATION</b>	<b>31</b>
<b>4.4.2 TEST PROCEDURE</b>	<b>31</b>
<b>4.4.3 TEST SETUP</b>	<b>32</b>
<b>4.4.4 TEST RESULTS</b>	<b>33</b>
<b>4.5 RS TESTING</b>	<b>34</b>
<b>4.5.1 TEST SPECIFICATION</b>	<b>34</b>
<b>4.5.2 TEST PROCEDURE</b>	<b>34</b>
<b>4.5.3 TEST SETUP</b>	<b>35</b>
<b>4.5.4 TEST RESULTS</b>	<b>36</b>
<b>4.6 EFT/BURST TESTING</b>	<b>37</b>
<b>4.6.1 TEST SPECIFICATION</b>	<b>37</b>
<b>4.6.2 TEST PROCEDURE</b>	<b>37</b>
<b>4.6.3 TEST SETUP</b>	<b>38</b>
<b>4.6.4 TEST RESULTS</b>	<b>39</b>
<b>4.7 SURGE TESTING</b>	<b>40</b>
<b>4.7.1 TEST SPECIFICATION</b>	<b>40</b>
<b>4.7.2 TEST PROCEDURE</b>	<b>40</b>
<b>4.7.3 TEST SETUP</b>	<b>41</b>
<b>4.7.4 TEST RESULTS</b>	<b>42</b>
<b>4.8 INJECTION CURRENT TESTING</b>	<b>43</b>
<b>4.8.1 TEST SPECIFICATION</b>	<b>43</b>
<b>4.8.2 TEST PROCEDURE</b>	<b>43</b>
<b>4.8.3 TEST SETUP</b>	<b>43</b>
<b>4.8.4 TEST RESULTS</b>	<b>44</b>
<b>4.9 VOLTAGE INTERRUPTION/DIPS TESTING</b>	<b>45</b>
<b>4.9.1 TEST SPECIFICATION</b>	<b>45</b>
<b>4.9.2 TEST PROCEDURE</b>	<b>45</b>
<b>4.9.3 TEST SETUP</b>	<b>45</b>
<b>4.9.4 TEST RESULTS</b>	<b>46</b>

## TEST SUMMARY

Test procedures according to the technical standards:

EMC Emission				
Standard	Test Item	Limit	Judgment	Remark
EN IEC 55014-1-2021	Conducted Emission	Class B	PASS	
	Radiated Emission	Class B	PASS	
EN IEC 61000-3-2:2019/A1:2021/A2:2024	Harmonic Current Emission	Class A or D NOTE (2)	PASS	
EN 61000-3-3:2013/A1:2019/A2:2021	Voltage Fluctuations & Flicker	-----	PASS	
EMC Immunity				
Section EN IEC 55014-2-2021	Test Item	Performance Criteria	Judgment	Remark
EN 61000-4-2: 2009	Electrostatic Discharge	B	PASS	
EN 61000-4-3:2006+A1:2008+A2:2010	RF electromagnetic field	A	PASS	
EN 61000-4-4: 2012	Fast transients	B	PASS	
EN 61000-4-5: 2006	Surges	B	PASS	
EN 61000-4-6: 2012	Injected Current	A	PASS	
EN 61000-4-11: 2004	Volt. Interruptions Volt. Dips	C / C / C NOTE (3)	PASS	

### NOTE:

- (1) 'N/A' denotes test is not applicable in this Test Report
  - (2) No limits apply for equipment with an active input power up to and including 75W.
  - (3) Voltage dip: 0% reduction – Performance Criteria **C**  
Voltage dip: 30% reduction – Performance Criteria **C**  
Voltage dip: 60% reduction – Performance Criteria **C**
- For client's request and manual description, the test will not be executed.

#### TEST FACILITY

Dongguan Anhua Testing Technology Co., Ltd.

Room 401, Building 1, No. 35, Liaobu Jinyuan Road, Liaobu, Dongguan, Guangdong, China

#### MEASUREMENT UNCERTAINTY

The reported uncertainty of measurement  $y \pm U$ , where expended uncertainty  $U$  is based on a standard uncertainty multiplied by a coverage factor of  $k=2$ , providing a level of confidence of approximately 95 %.

Test Item	Uncertainty
Conducted Emission	2.6dB
Radiated Emission(Below 1G)	4.56dB(distance:3m; Polarize:V)
	4.42dB(distance:3m; Polarize:H)
Radiated Emission(1GHz-18GHz)	3.78dB(distance:3m; Polarize:V)
	3.69dB(distance:3m; Polarize:H)
Flicker test	1.7%
Harmonic test	1.88dB
R/S Test	0.92dB
C/S Test	0.68 dB
Test Site Temperature And Humidity	0.6°C
	3%

## GENERAL INFORMATION

### GENERAL DESCRIPTION OF EUT

Equipment	Purple light spray comb	
Brand	N/A	
Model Name	CRY-982	
Additional Model Number(s)	N/A	
Model Difference	N/A	
Product Description	The EUT is a Purple light spray comb	
	Operating frequency:	N/A
	Connecting I/O port:	N/A
	Based on the application, features, or specification exhibited in User's Manual, the EUT is considered as an Household Device. More details of EUT technical specification, please refer to the User's Manual.	
Power Source	DC Voltage	
Power Rating	DC 5V,5W	



## DESCRIPTION OF TEST MODES

To investigate the maximum EMI emission characteristics generates from EUT, the test system was pre-scanning tested base on the consideration of following EUT operation mode or test configuration mode which possible have effect on EMI emission level. Each of these EUT operation mode(s) or test configuration mode(s) mentioned above was evaluated respectively.

Pretest Mode	Description
Mode 1	Running

For Conducted Test	
Final Test Mode	Description
Mode 1	Running

For Radiated Test	
Final Test Mode	Description
Mode 1	Running

For EMS Test	
Final Test Mode	Description
Mode 1	Running

## DESCRIPTION OF TEST SETUP

Mode 1:

E-1 EUT
------------

## DESCRIPTION TEST PERIPHERAL AND EUT PERIPHERAL

The EUT has been tested as an independent unit together with other necessary accessories or support units. The following support units or accessories were used to form a representative test configuration during the tests.

Item	Equipment	Mfr/Brand	Model/Type No.	Series No.	Note
E-1	Purple light spray comb	N/A	CRY-982	N/A	EUT

Item	Shielded Type	Ferrite Core	Length	Note

Note:

- (1) The support equipment was authorized by Declaration of Confirmation.
- (2) For detachable type I/O cable should be specified the length in cm in 『Length』 column.
- (3) 'YES' means 'shielded' 'with core'; 'NO' means 'unshielded' 'without core'.

**MEASUREMENT INSTRUMENTS LIST**
**CONDUCTED EMISSION**

Item	Kind of Equipment	Manufacturer	Type No.	Serial No.	Last calibration	Calibrated until	Calibration period
1	LISN	R&S	ENV216	101334	Nov. 09,24	Nov. 08,25	1 year
2	LISN	SCHWARZBECK	NNLK 8129	8129267	Nov. 09,24	Nov. 08,25	1 year
3	Pulse Limiter	SCHWARZBECK	VTSD 9561F	9716	Nov. 09,24	Nov. 08,25	1 year
4	50Ω Switch	ANRITSU CORP	MA59B	6200983704	Nov. 09,24	Nov. 08,25	1 year
5	Test Cable	N/A	C01	N/A	Nov. 09,24	Nov. 08,25	1 year
6	Test Cable	N/A	C02	N/A	Nov. 09,24	Nov. 08,25	1 year
7	Test Cable	N/A	C03	N/A	Nov. 09,24	Nov. 08,25	1 year
8	EMI Test Receiver	R&S	ESCI	101318	Nov. 09,24	Nov. 08,25	1 year
9	Passive Voltage Probe	ESH2-Z3	R&S	100173	Nov. 09,24	Nov. 08,25	1 year
10	Triple-Loop Antenna	EVERFINE	LIA-2	11020016	Nov. 09,24	Nov. 08,25	1 year
11	Absorbing Clamp	R&S	MDS-21	100423	Nov. 09,24	Nov. 08,25	1 year

**RADIATED TEST SITE**

Item	Kind of Equipment	Manufacturer	Type No.	Serial No.	Last calibration	Calibrated until	Calibration period
1	Bilog Antenna	TESEQ	CBL6111D	31437	Nov. 09,24	Nov. 08,25	1 year
2	Test Cable	N/A	R-01	N/A	Nov. 09,24	Nov. 08,25	1 year
3	Test Cable	N/A	R-02	N/A	Nov. 09,24	Nov. 08,25	1 year
4	EMI Test Receiver	Rohde&Schwarz	ESVD	847312/008	Nov. 09,24	Nov. 08,25	1 year
5	Antenna Mast	EM	SC100_1	N/A	N/A	N/A	N/A
6	Turn Table	EM	SC100	060533	N/A	N/A	N/A
7	50Ω Switch	Anritsu Corp	MA59B	6200983705	Nov. 09,24	Nov. 08,25	1 year
8	Spectrum Analyzer	Aglient	E4407B	160400005	Nov. 09,24	Nov. 08,25	1 year
9	Horn Antenna	EM	EM-AH-10180	2011071402	Nov. 09,24	Nov. 08,25	1 year
10	Amplifier	EM	EM-30180	060536	Nov. 09,24	Nov. 08,25	1 year

**HARMONICS AND FILCK**

Item	Kind of Equipment	Manufacturer	Type No.	Serial No.	Last calibration	Calibrated until	Calibration period
1	Harmonic & Flicker	EM TEST	DPA500	0303-08	Nov. 09,24	Nov. 08,25	1 year
2	AC Power Source	EM TEST	ACS500	0203-06	Nov. 09,24	Nov. 08,25	1 year

**ESD**

Item	Kind of Equipment	Manufacturer	Type No.	Serial No.	Last calibration	Calibrated until	Calibration period
1	ESD TEST GENERATOR	SCHAFFNER	NSG438	858	Nov. 09,24	Nov. 08,25	1 year

**RS**

Item	Kind of Equipment	Manufacturer	Type No.	Serial No.	Last calibration	Calibrated until	Calibration period
1	Signal Generator	R&S	SMT 06	832080/007	Nov. 09,24	Nov. 08,25	1 year
2	Log-Bicon Antenna	Schwarzbeck	VULB9161	4022	Nov. 09,24	Nov. 08,25	1 year
3	Power Amplifier	AR	150W1000M1	320946	Nov. 09,24	Nov. 08,25	1 year
4	Microwave Horn Antenna	AR	AT4002A	321467	Nov. 09,24	Nov. 08,25	1 year
5	Power Amplifier	AR	25S1G4A	308598	Nov. 09,24	Nov. 08,25	1 year

**SURGE, EFT/BURST, VOLTAGE INTERRUPTION/DIPS**

Item	Kind of Equipment	Manufacturer	Type No.	Serial No.	Last calibration	Calibrated until	Calibration period
1	Surge Generator	EVERFINE	EMS61000-5A	1101002	Nov. 09,24	Nov. 08,25	1 year
2	DIPS Generator	EVERFINE	EMS61000-11 K	1011002	Nov. 09,24	Nov. 08,25	1 year
3	EFT/B Generator	EVERFINE	EMS61000-4A-V2	1012005	Nov. 09,24	Nov. 08,25	1 year

**INJECTION CURRENT**

Item	Kind of Equipment	Manufacturer	Type No.	Serial No.	Last calibration	Calibrated until	Calibration period
1	Signal Generator	IFR	2023A	202301/368	Nov. 09,24	Nov. 08,25	1 year
2	Power Amplifier	AR	75A250AM1	0320709	Nov. 09,24	Nov. 08,25	1 year
3	CDN	FCC	FCC-801-M2	06043	Nov. 09,24	Nov. 08,25	1 year

4	EM Clamp	FCC	F-203I-23MM	504	Nov. 09,24	Nov. 08,25	1 year
---	----------	-----	-------------	-----	------------	------------	--------

#### 2.4.8 MF

Item	Kind of Equipment	Manufacturer	Type No.	Serial No.	Last calibration	Calibrated until	Calibration period
1	Generator	EVERFINE	EMS61000-8K	1007001	Nov. 09,24	Nov. 08,25	1 year

## EMC EMISSION TEST

### CONDUCTED EMISSION MEASUREMENT

#### POWER LINE CONDUCTED EMISSION (Frequency Range 150KHz-30MHz)

Frequency Range (MHz)	At mains terminals		At load terminals and additional terminals	
	Quasi-peak (dBuV)	Average (dBuV)	Quasi-peak (dBuV)	Average (dBuV)
0.15 -0.5	66 - 56 *	56 - 46 *	80.00	70.00
0.50 -5.0	56.00	46.00	74.00	64.00
5.0 -30.0	60.00	50.00	74.00	64.00

#### MAINS TERMINALS OF TOOLS

Frequency Range (MHz)	Rated motor power not exceeding 700W		Rated motor power above 700W and not exceeding 1 000 W		Rated motor power above 1 000 W	
	dB (uV) Quasi-peak	dB (uV) Average**	dB (uV) Quasi-peak	dB (uV) Average**	dB (uV) Quasi-peak	dB (uV) Average**
0.15 -0.5	66.0 to 59.0*	59.0 to 49.0*	70.0 to 63.0*	63.0 to 53.0*	76.0 to 69.0*	69.0 to 59.0*
0.50 -5.0	59.0	49.0	63.0	53.0	69.0	59.0
5.0 -30.0	64.0	54.0	68.0	58.0	74.0	64.0

Note:

- (1) The tighter limit applies at the band edges.
- (2) The limit of ' \* ' marked band means the limitation decreases linearly with the logarithm of the frequency in the range.
- (3) '\*\*' If the limit for the measurement with the average detector is met when using a receiver with a quasi-peak detector, the equipment under test shall be deemed to meet both limits and the measurement using the receiver with an average detector need not be carried out.

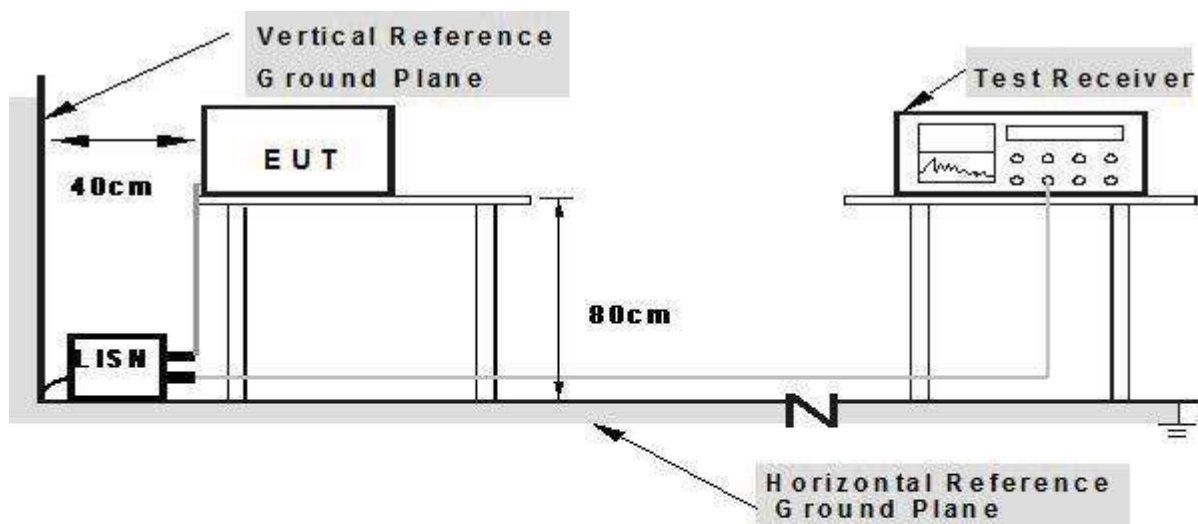
The following table is the setting of the receiver

Receiver Parameters	Setting
Attenuation	10 dB
Start Frequency	0.15 MHz
Stop Frequency	30 MHz
IF Bandwidth	9 kHz

## TEST PROCEDURE

- The EUT was placed 0.8 meters from the horizontal ground plane with EUT being connected to the power mains through a line impedance stabilization network (LISN). All other support equipments powered from additional LISN(s). The LISN provide 50 Ohm/ 50uH of coupling impedance for the measuring instrument.
- Interconnecting cables that hang closer than 40 cm to the ground plane shall be folded back and forth in the center forming a bundle 30 to 40 cm long.
- I/O cables that are not connected to a peripheral shall be bundled in the center. The end of the cable may be terminated, if required, using the correct terminating impedance. The overall length shall not exceed 1 m.
- LISN at least 80 cm from nearest part of EUT chassis.
- For the actual test configuration, please refer to the related Item –EUT Test Photos.

## TEST SETUP



**Note: 1.Support units were connected to second LISN.**

**2.Both of LISNs (AMH) are 80 cm from EUT and at least 80 from other units and other metal planes**

## EUT OPERATING CONDITIONS

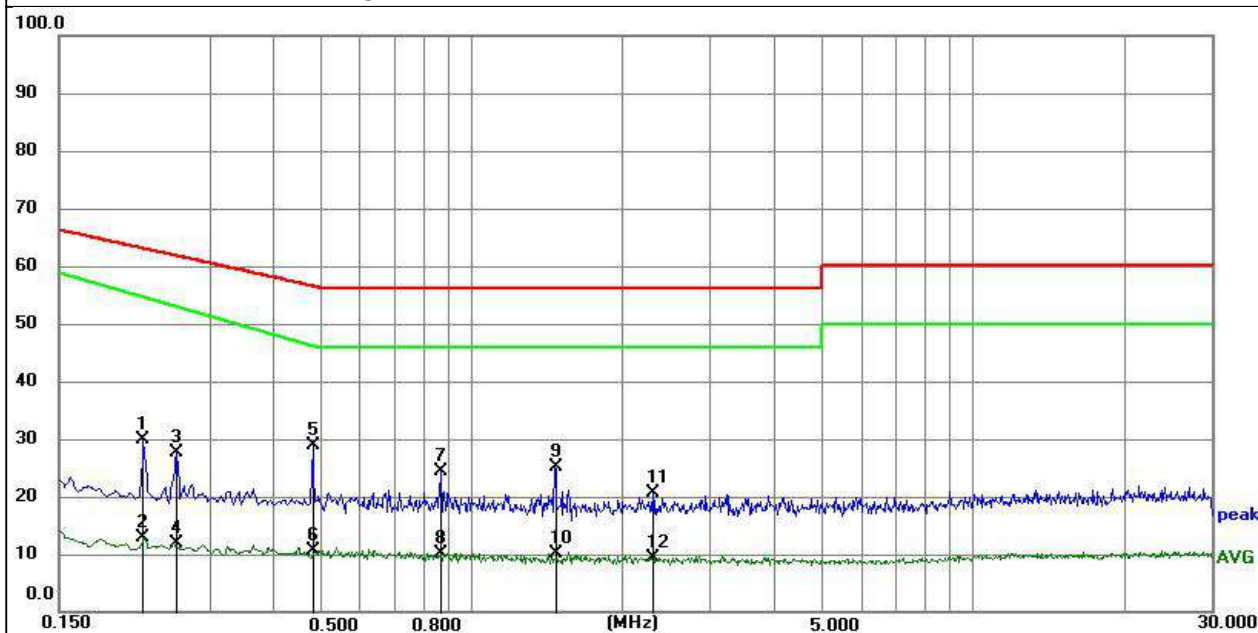
The EUT tested system was configured as the statements of **2.3** Unless otherwise a special operating condition is specified in the follows during the testing.

# TEST RESULTS

EUT :	Purple light spray comb	Model Name. :	CRY-982
Temperature :	26 °C	Relative Humidity :	54%
Pressure :	1010hPa	Test Date :	2025-05-21
Test Mode :	Running	Phase :	L
Test Voltage :	AC/DC ADAPTOR 230V To DC 5V		

Remark:

Factor = Insertion Loss + Cable Loss.



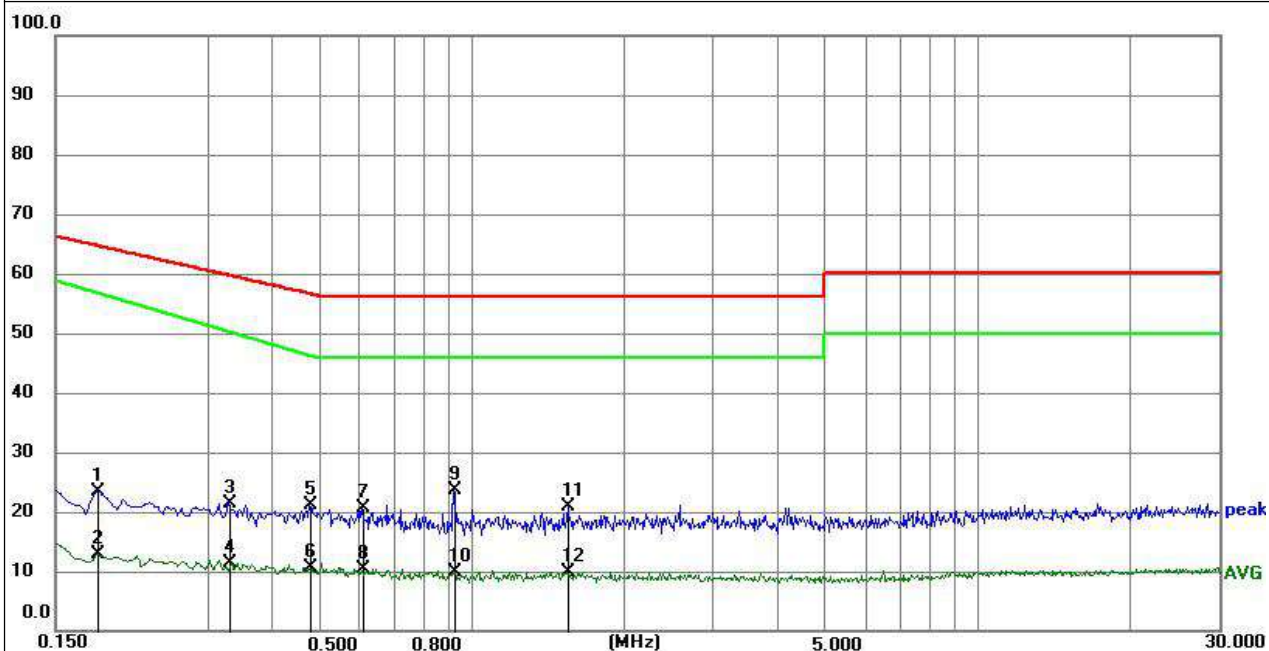
No.	Mk.	Freq. MHz	Reading Level dB	Correct Factor dB	Measure- ment dBuV	Limit dBuV	Over dB	Detector	Comment
1		0.2220	19.87	10.07	29.94	62.74	32.80	peak	
2		0.2220	2.76	10.07	12.83	54.77	41.94	AVG	
3		0.2580	17.54	10.05	27.59	61.50	33.91	peak	
4		0.2580	1.73	10.05	11.78	53.14	41.36	AVG	
5	*	0.4830	18.98	10.02	29.00	56.29	27.29	peak	
6		0.4830	0.57	10.02	10.59	46.37	35.78	AVG	
7		0.8700	14.32	9.99	24.31	56.00	31.69	peak	
8		0.8700	0.18	9.99	10.17	46.00	35.83	AVG	
9		1.4639	15.19	9.99	25.18	56.00	30.82	peak	
10		1.4639	0.06	9.99	10.05	46.00	35.95	AVG	
11		2.3054	10.78	9.96	20.74	56.00	35.26	peak	
12		2.3054	-0.65	9.96	9.31	46.00	36.69	AVG	



EUT :	Purple light spray comb	Model Name. :	CRY-982
Temperature :	26 °C	Relative Humidity :	54%
Pressure :	1010hPa	Test Date :	2025-05-21
Test Mode :	Running	Phase :	N
Test Voltage :	AC/DC ADAPTOR 230V To DC 5V		

Remark:

Factor = Insertion Loss + Cable Loss.



No. Mk.	Freq.	Reading Level	Correct Factor	Measurement	Limit	Over		
	MHz		dB	dBuV	dBuV	dB	Detector	Comment
1	0.1815	13.29	10.10	23.39	64.42	41.03	peak	
2	0.1815	2.77	10.10	12.87	56.94	44.07	AVG	
3	0.3303	11.31	10.02	21.33	59.44	38.11	peak	
4	0.3303	1.29	10.02	11.31	50.48	39.17	AVG	
5	0.4785	11.18	10.02	21.20	56.37	35.17	peak	
6	0.4785	0.51	10.02	10.53	46.47	35.94	AVG	
7	0.6045	10.68	10.00	20.68	56.00	35.32	peak	
8	0.6045	0.44	10.00	10.44	46.00	35.56	AVG	
9 *	0.9195	13.60	9.99	23.59	56.00	32.41	peak	
10	0.9195	-0.23	9.99	9.76	46.00	36.24	AVG	
11	1.5494	11.02	9.98	21.00	56.00	35.00	peak	
12	1.5494	-0.05	9.98	9.93	46.00	36.07	AVG	

## RADIATED EMISSION MEASUREMENT

### LIMITS OF RADIATED EMISSION MEASUREMENT

(Below 1000MHz)

FREQUENCY (MHz)	At 10m	At 3m
	dBuV/m	dBuV/m
30 – 230	30	40
230 – 1000	37	47

### LIMITS OF DISTURBANCE POWER MEASUREMENT

(Below 1000MHz)

	Household and similar appliances		Tools					
Frequency Range			Rated motor power not exceeding 700 W		Rated motor power above 700 W and not exceeding 1 000 W		Rated motor power above 1 000 W	
(MHz)	dB (pW) Quasi-peak	dB (pW) Averag*	dB (pW) Quasi-peak	dB (pW) Averag*	dB (pW) Quasi-peak	dB (pW) Averag*	dB (pW) Quasi-peak	dB (pW) Average *
30-300	44-55	35-45	44-55	35-45	49-59	39-49	55-65	45-55

\* If the limit for the measurement with the average detector is met when using a receiver with a quasi-peak detector, the equipment under test shall be deemed to meet both limits and the measurement using the receiver with an average detector need not be carried out.

#### Notes:

- (1) The limit for radiated test was performed according to as following: CISPR 14.
- (2) The tighter limit applies at the band edges.
- (3) Emission level (dBuV/m)=20log Emission level (uV/m).

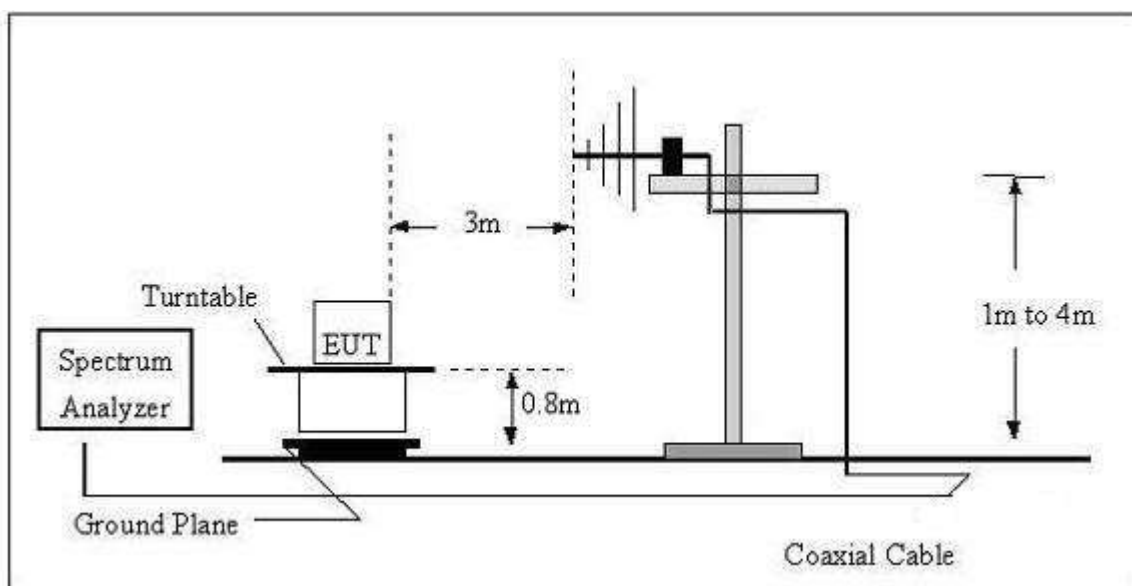
## TEST PROCEDURE

- a. The measuring distance of at 10 m shall be used for measurements at frequency up to 1GHz. For frequencies above 1GHz, any suitable measuring distance may be used.
- b. The EUT was placed on the top of a rotating table 0.8 meters above the ground at a 10 meter open area test site. The table was rotated 360 degrees to determine the position of the highest radiation.
- c. The height of the equipment or of the substitution antenna shall be 0.8 m; the height of the test antenna shall vary between 1 m to 4 m. Both horizontal and vertical polarizations of the antenna are set to make the measurement.

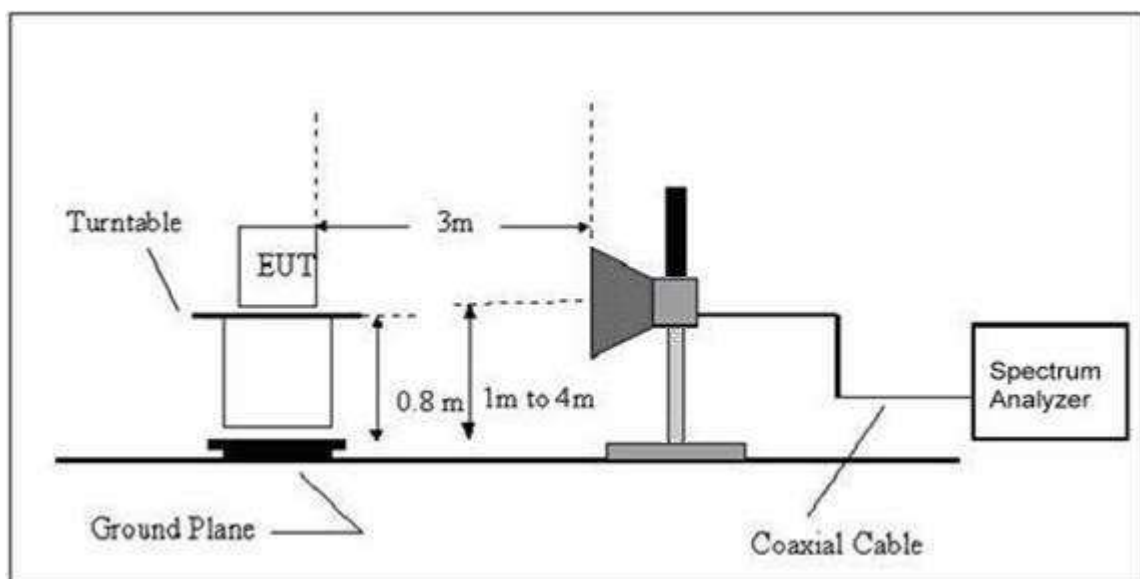
- d. The initial step in collecting conducted emission data is a spectrum analyzer peak detector mode pre-scanning the measurement frequency range. Significant peaks are then marked and then Quasi Peak detector mode re-measured, above 1G Average detector mode will be instead.
- e. If the Peak Mode measured value compliance with and lower than Quasi Peak Mode Limit, the EUT shall be deemed to meet QP(AV) Limits and then no additional QP Mode measurement performed.
- f. For the actual test configuration, please refer to the related Item –EUT Test Photos.

## TEST SETUP

### (A) Radiated Emission Test Set-Up Frequency Below 1 GHz.



### (B) Disturbance Power Test Set-UP Frequency Below 1GHz



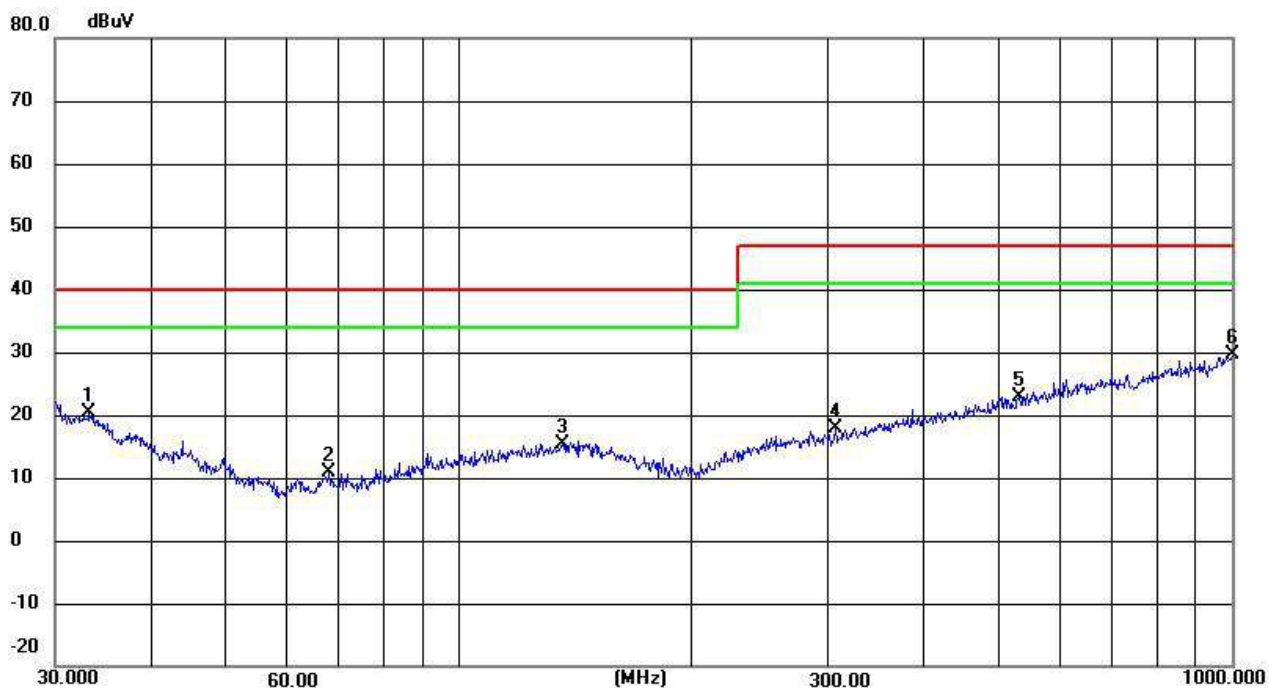


#### EUT OPERATING CONDITIONS

The EUT tested system was configured as the statements of **2.3** Unless otherwise a special operating condition is specified in the follows during the testing.

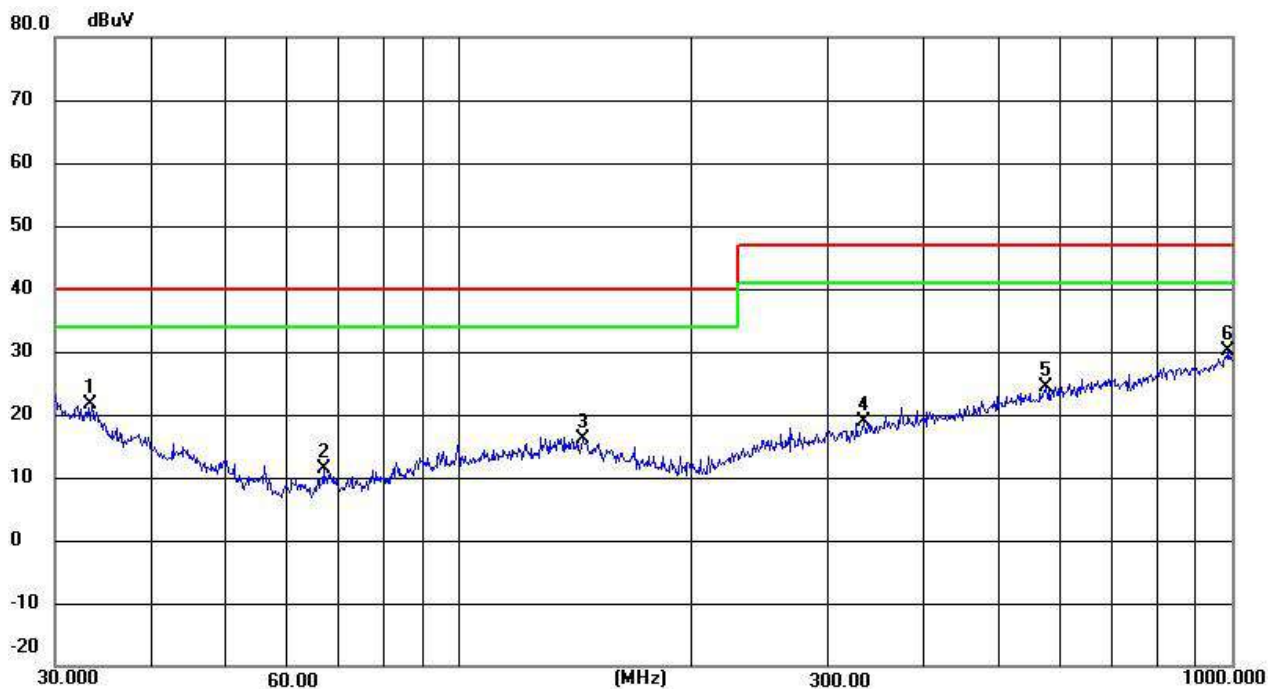
TEST RESULTS(30MHz-1000MHz)

EUT :	Purple light spray comb	Model Name. :	CRY-982
Temperature :	26 °C	Relative Humidity :	54%
Pressure :	1010hPa	Test Date :	2025-05-21
Test Mode :	Running	Phase :	Horizontal
Test Voltage :	DC 5V		



No.	Frequency (MHz)	Reading (dBuV)	Factor (dB)	Level (dBuV)	Limit (dBuV)	Margin (dB)	Detector	Height (cm)	Azimuth (deg.)	P/F	Remark
1	33.2112	29.66	-9.34	20.32	40.00	-19.68	peak	100	0	P	
2	67.9129	30.97	-20.14	10.83	40.00	-29.17	peak	100	0	P	
3	135.9822	47.64	-32.15	15.49	40.00	-24.51	peak	100	0	P	
4	306.7537	49.71	-31.88	17.83	47.00	-29.17	peak	100	0	P	
5	530.1014	54.16	-31.25	22.91	47.00	-24.09	peak	100	0	P	
6 *	1000.0000	60.19	-30.60	29.59	47.00	-17.41	peak	100	0	P	

EUT :	Purple light spray comb	Model Name. :	CRY-982
Temperature :	26 °C	Relative Humidity :	54%
Pressure :	1010hPa	Test Date :	2025-05-21
Test Mode :	Running	Phase :	Vertical
Test Voltage :	DC 5V		

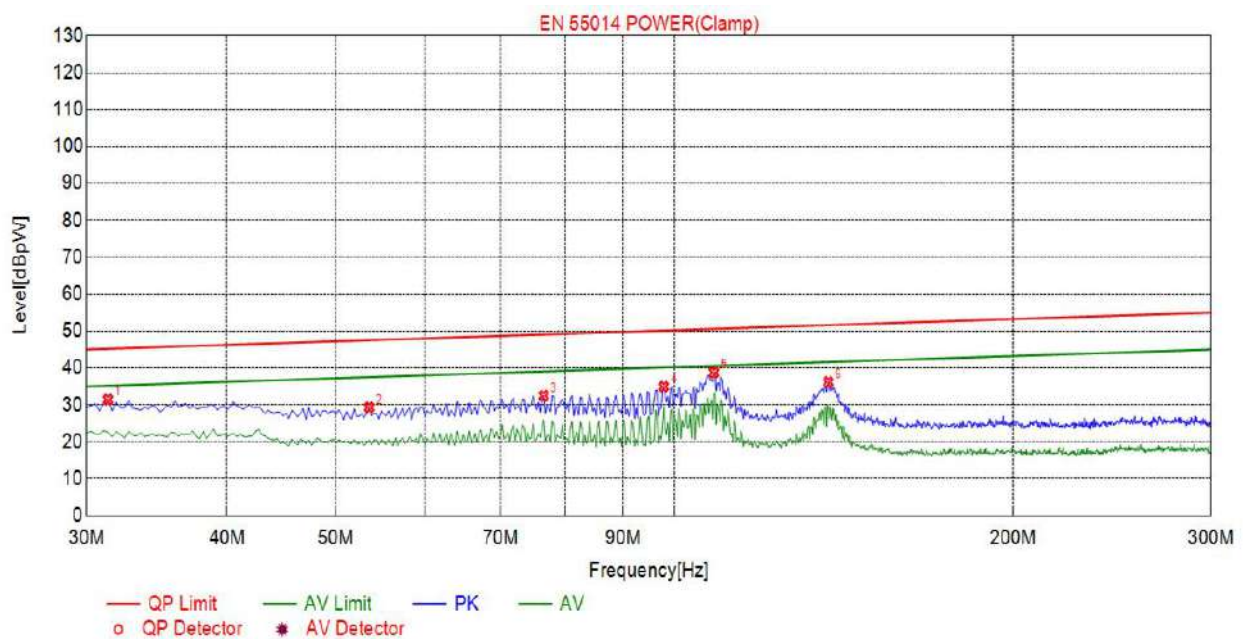


No.	Frequency (MHz)	Reading (dBuV)	Factor (dB)	Level (dBuV)	Limit (dBuV)	Margin (dB)	Detector	Height (cm)	Azimuth (deg.)	P/F	Remark
1	33.4449	31.07	-9.50	21.57	40.00	-18.43	peak	100	360	P	
2	66.7325	31.78	-20.41	11.37	40.00	-28.63	peak	100	360	P	
3	144.3348	48.35	-32.13	16.22	40.00	-23.78	peak	100	360	P	
4	333.6867	50.73	-31.80	18.93	47.00	-28.07	peak	100	360	P	
5	574.6258	55.67	-31.18	24.49	47.00	-22.51	peak	100	360	P	
6 *	989.5355	60.72	-30.61	30.11	47.00	-16.89	peak	100	360	P	



TEST RESULTS(30MHz ~300MHz)

EUT :	Purple light spray comb	Model Name. :	CRY-982
Temperature :	26 °C	Relative Humidity :	54%
Pressure :	1010hPa	Test Date :	2025-05-21
Test Mode :	Running	Phase :	AC
Test Voltage :	DC 5V		



Suspected Lis								
NO.	Freq. [MHz]	Level[d Bpw]	Factor [dB]	Reading [dBpW]	Limit [dBpW]	Margin [dB]	Detector	Type
1	31.3514	31.43	7.79	23.64	45.19	13.76	PK	Clamp
2	53.5135	29.32	5.50	23.82	47.51	18.19	PK	Clamp
3	76.4865	32.45	6.36	26.09	49.06	16.61	PK	Clamp
4	97.8378	34.93	4.65	30.28	50.13	15.20	PK	Clamp
5	108.3784	38.76	5.28	33.48	50.58	11.82	PK	Clamp
6	137.0270	36.18	5.36	30.82	51.60	15.42	PK	Clamp

## HARMONICS CURRENT

### LIMITS OF HARMONICS CURRENT

IEC 555-2					
Table - I			Table - II		
Equipment Category	Harmonic Order n	Max. Permissible Harmonic Current (in Amperes)	Equipment Category	Harmonic Order n	Max. Permissible Harmonic Current (in Amperes)
Non Portable Tools or TV Receivers	Odd Harmonics		TV Receivers	Odd Harmonics	
	3	2.30		3	0.80
	5	1.14		5	0.60
	7	0.77		7	0.45
	9	0.40		9	0.30
	11	0.33		11	0.17
	13	0.21		13	0.12
	15≤n≤39	0.15 · 15/n		15≤n≤39	0.10 · 15/n
	Even Harmonics			Even Harmonics	
	2	1.08		2	0.30
	4	0.43		4	0.15
	8	0.30			
8≤n≤40	0.23 · 8/n	DC	0.05		

EN 61000-3-2/IEC 61000-3-2					
Equipment Category	Max. Permissible Harmonic Current (in Amperes)	Equipment Category	Harmonic Order n	Max. Permissible Harmonic Current (in A) (mA/w)	
Class A	Same as Limits Specified in 4-2.1, Table - I, but only odd harmonics required	Class D	3	2.30	3.4
			5	1.14	1.9
			7	0.77	1.0
			9	0.40	0.5
			11	0.33	0.35
			13≤n≤39	see Table I	3.85/n
			only odd harmonics required		



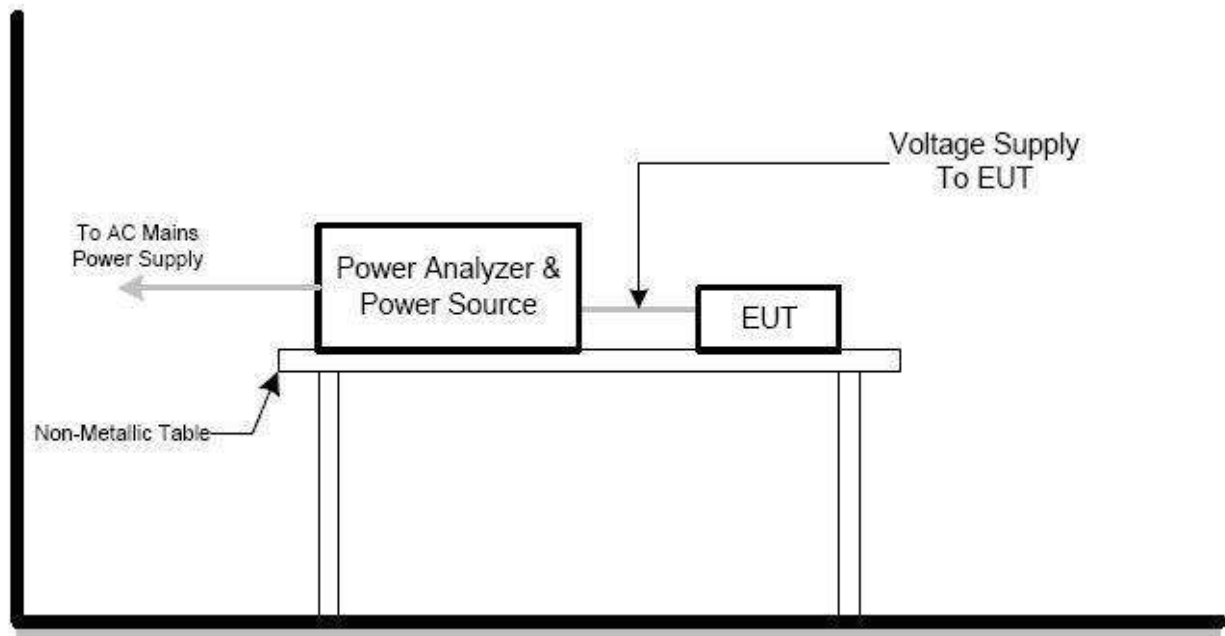
## TEST PROCEDURE

- a. The EUT was placed on the top of a wooden table 0.8 meters above the ground and operated to produce the maximum harmonic components under normal operating conditions.
- b. The classification of EUT is according to section 5 of EN 61000-3-2. The EUT is classified as follows:  
Class A: Balanced three-phase equipment, Household appliances excluding equipment as Class D, Tools excluding portable tools, Dimmers for incandescent lamps, audio equipment, equipment not specified in one of the three other classes.  
Class B: Portable tools. Portable tools.; Arc welding equipment which is not professional equipment.  
Class C: Lighting equipment.  
Class D: Equipment having a specified power less than or equal to 600W of the following types: Personal computers and personal computer monitors and television receivers.
- c. The correspondent test program of test instrument to measure the current harmonics emanated from EUT is chosen. The measure time shall be not less than the time necessary for the EUT to be exercised.

## EUT OPERATING CONDITIONS

The EUT tested system was configured as the statements of **2.3** Unless otherwise a special operating condition is specified in the follows during the testing.

## TEST SETUP



## TEST RESULTS

EUT :	Purple light spray comb	Model Name. :	CRY-982
Temperature :	26 °C	Relative Humidity :	54%
Pressure :	1010hPa	Test Date :	2025-05-21
Test Mode :	Running		
Test Voltage :	DC 5V		

### Average harmonic current results

Hn	I <sub>eff</sub> [A]	I <sub>eff</sub> [%]	Limit [A]	Result
1	54.280E-3	100.000		
2	879.136E-6	1.620	972.00E-3	PASS
3	53.207E-3	98.023	2.07	PASS
4	4.171E-3	7.684	387.00E-3	PASS
5	50.334E-3	92.729	1.03	PASS
6	873.771E-6	1.610	270.00E-3	PASS
7	46.261E-3	85.226	693.00E-3	PASS
8	1.540E-3	2.838	207.00E-3	PASS
9	41.384E-3	76.241	360.00E-3	PASS
10	1.479E-3	2.725	165.60E-3	PASS
11	35.950E-3	66.230	297.00E-3	PASS
12	813.505E-6	1.499	138.00E-3	PASS
13	30.390E-3	55.986	189.00E-3	PASS
14	820.178E-6	1.511	118.29E-3	PASS
15	25.051E-3	46.151	135.00E-3	PASS
16	763.358E-6	1.406	103.50E-3	PASS
17	20.403E-3	37.589	119.11E-3	PASS
18	1.256E-3	2.313	92.00E-3	PASS
19	16.785E-3	30.922	106.58E-3	PASS
20	754.383E-6	1.390	82.80E-3	PASS
21	14.348E-3	26.434	96.43E-3	PASS
22	1.302E-3	2.399	75.28E-3	PASS
23	12.971E-3	23.896	88.05E-3	PASS
24	749.844E-6	1.381	68.99E-3	PASS
25	12.243E-3	22.556	81.00E-3	PASS
26	1.268E-3	2.335	63.69E-3	PASS
27	11.711E-3	21.576	75.00E-3	PASS
28	729.747E-6	1.344	59.14E-3	PASS
29	11.032E-3	20.324	69.83E-3	PASS
30	749.859E-6	1.381	55.20E-3	PASS
31	10.193E-3	18.779	65.32E-3	PASS
32	748.461E-6	1.379	51.75E-3	PASS
33	8.993E-3	16.568	61.36E-3	PASS
34	714.008E-6	1.315	48.71E-3	PASS
35	7.758E-3	14.293	57.86E-3	PASS
36	729.180E-6	1.343	46.00E-3	PASS
37	6.346E-3	11.690	54.73E-3	PASS
38	713.340E-6	1.314	43.58E-3	PASS
39	5.144E-3	9.476	51.92E-3	PASS
40	937.976E-6	1.728	41.40E-3	PASS

### Maximum harmonic voltage results

Hn	Ueff [V]	Ueff [%]	Limit [%]	Result
1	231.39	100.603		
2	40.35E-3	0.018	0.2	PASS
3	134.24E-3	0.058	0.9	PASS
4	16.76E-3	0.007	0.2	PASS
5	38.12E-3	0.017	0.4	PASS
6	11.34E-3	0.005	0.2	PASS
7	59.91E-3	0.026	0.3	PASS
8	15.26E-3	0.007	0.2	PASS
9	59.27E-3	0.026	0.2	PASS
10	10.64E-3	0.005	0.2	PASS
11	67.55E-3	0.029	0.1	PASS
12	14.73E-3	0.006	0.1	PASS
13	21.94E-3	0.010	0.1	PASS
14	13.07E-3	0.006	0.1	PASS
15	60.44E-3	0.026	0.1	PASS
16	11.14E-3	0.005	0.1	PASS
17	35.56E-3	0.015	0.1	PASS
18	10.68E-3	0.005	0.1	PASS
19	43.95E-3	0.019	0.1	PASS
20	14.74E-3	0.006	0.1	PASS
21	31.15E-3	0.014	0.1	PASS
22	10.23E-3	0.004	0.1	PASS
23	49.33E-3	0.021	0.1	PASS
24	11.49E-3	0.005	0.1	PASS
25	14.75E-3	0.006	0.1	PASS
26	14.06E-3	0.006	0.1	PASS
27	31.58E-3	0.014	0.1	PASS
28	13.46E-3	0.006	0.1	PASS
29	36.79E-3	0.016	0.1	PASS
30	11.34E-3	0.005	0.1	PASS
31	40.32E-3	0.018	0.1	PASS
32	10.32E-3	0.004	0.1	PASS
33	15.37E-3	0.007	0.1	PASS
34	11.82E-3	0.005	0.1	PASS
35	15.72E-3	0.007	0.1	PASS
36	10.97E-3	0.005	0.1	PASS
37	33.11E-3	0.014	0.1	PASS
38	10.30E-3	0.004	0.1	PASS
39	31.07E-3	0.014	0.1	PASS
40	13.55E-3	0.006	0.1	PASS

## VOLTAGE FLUCTUATION AND FLICKERS

### LIMITS OF VOLTAGE FLUCTUATION AND FLICKERS

Tests	Limits		Descriptions
	IEC555-3	IEC/EN 61000-3-3	
Pst	$\leq 1.0$ , Tp= 10 min.	$\leq 1.0$ , Tp= 10 min.	Short Term Flicker Indicator
Plt	N/A	$\leq 0.65$ , Tp=2 hr.	Long Term Flicker Indicator
dc	$\leq 3\%$	$\leq 3.3\%$	Relative Steady-State V-Chang
dmax	$\leq 4\%$	$\leq 4\%$	Maximum Relative V-change
d (t)	N/A	$\leq 3.3\%$ for > 500 ms	Relative V-change characteristic

### TEST PROCEDURE

#### a. Harmonic Current Test:

Test was performed according to the procedures specified in Clause 5.0 of IEC555-2 and/or Sub-clause 6.2 of IEC/EN 61000-3-2 depend on which standard adopted for compliance measurement.

#### b. Fluctuation and Flickers Test:

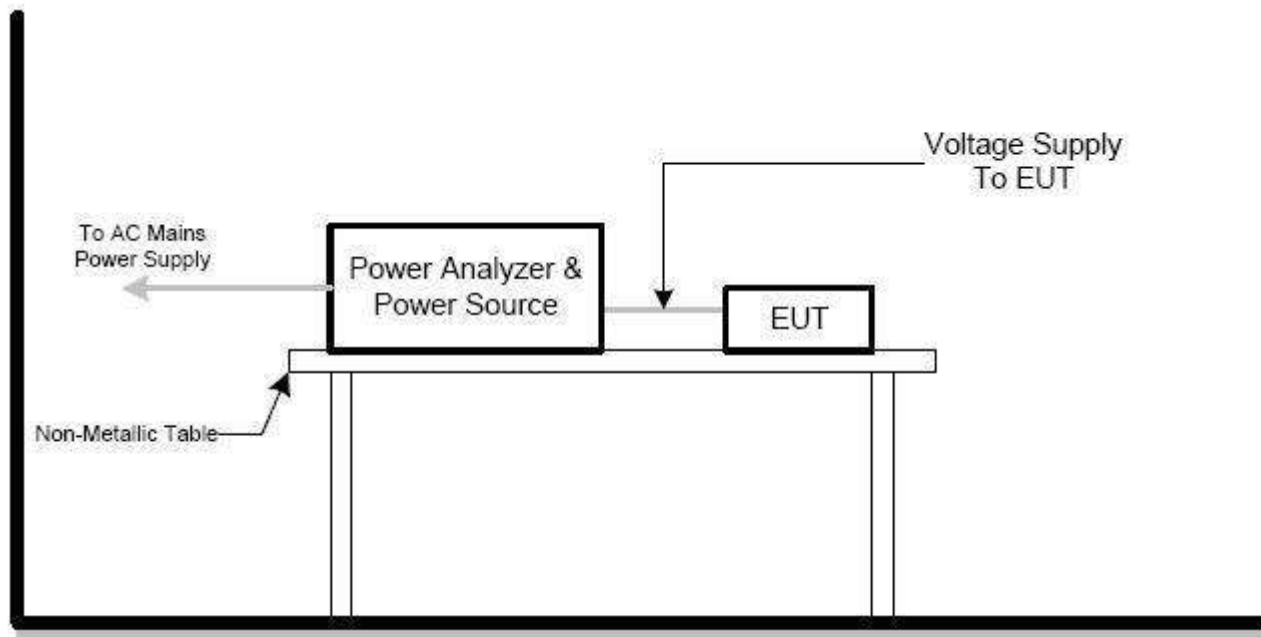
Tests was performed according to the Test Conditions/Assessment of Voltage Fluctuations specified in Clause 5.0/6.0 of IEC555-3 and/or Clause 6.0/4.0 of IEC/EN 61000-3-3 depend on which standard adopted for compliance measurement.

c. All types of harmonic current and/or voltage fluctuation in this report are assessed by direct measurement using flicker-meter.

### EUT OPERATING CONDITIONS

The EUT tested system was configured as the statements of **2.3** Unless otherwise a special operating condition is specified in the follows during the testing.

## TEST SETUP



## TEST RESULTS

EUT :	Purple light spray comb	Model Name. :	CRY-982
Temperature :	25 °C	Relative Humidity :	45%
Pressure :	1010 hPa	Test Date :	2025-05-21
Test Mode :	Running		
Test Power :	DC 5V		

Test Parameter	Measurement Value	Limit	Remarks
$P_{st}$	0.023	1.0	Pass
$P_{lt}$	0.005	0.65	Pass
$T_{dt(s)}$	0.003	0.2	Pass
$d_{max}(\%)$	0.00%	4%	Pass
$d_c(\%)$	0.00%	3%	Pass

## EMC IMMUNITY TEST

### STANDARD COMPLIANCE/ SERVITY LEVEL/ CRITERIA

Tests Standard No.	TEST SPECIFICATION	Test Mode Test Ports	Perform. Criteria
1. ESD IEC/EN 61000-4-2	8KV air discharge 4KV contact discharge	Direct Mode	B
	4KV HCP discharge 4KV VCP discharge	Indirect Mode	B
2. RS IEC/EN 61000-4-3	80 MHz to 1000 MHz, 1000Hz, 80%, AM modulated	Enclosure	A
3. EFT/Burst IEC/EN 61000-4-4	5/50ns Tr/Th 5KHz Repetition Freq.	Power Supply Port	B
	5/50ns Tr/Th 5KHz Repetition Freq.	CTL/Signal Data Line Port	B
4. Surges IEC/EN 61000-4-5	1.2/50(8/20) Tr/Th us	L-N	B
	1.2/50(8/20) Tr/Th us	L-PE N-PE	B
5 Injected Current IEC/EN 61000-4-6	0.15 MHz to 80 MHz, 1000Hz 80 % , AM Modulated 150Ω source impedance	CTL/Signal Port	A
	0.15 MHz to 80 MHz, 1000Hz 80 % , AM Modulated 150Ω source impedance	AC Power Port	A
	0.15 MHz to 80 MHz, 1000Hz 80 % , AM Modulated 150Ω source impedance	DC Power Port	A
6. Power Frequency Magnetic Field IEC/EN 61000-4-8	50 Hz,	Enclosure	A
7. Volt. Interruptions Volt. Dips IEC/EN 61000-4-11	Voltage dip 0%	AC Power Port	C
	Voltage dip 30%		C
	Voltage dip 60%		C

## GENERAL PERFORMANCE CRITERIA

According to **EN 55014-2** standard, the general performance criteria as following:

<b>Criterion A</b>	<p>The equipment shall continue to operate as intended without operator intervention. No degradation of performance or loss of function is allowed below a performance level specified by the manufacturer when the equipment is used as intended.</p> <p>The performance level may be replaced by a permissible loss of performance. If the minimum performance level or the permissible performance loss is not specified by the manufacturer, then either of these may be derived from the product description and documentation, and by what the user may reasonably expect from the equipment if used as intended.</p>
<b>Criterion B</b>	<p>After the test, the equipment shall continue to operate as intended without operator intervention. No degradation of performance or loss of function is allowed, after the application of the phenomena below a performance level specified by the manufacturer, when the equipment is used as intended.</p> <p>The performance level may be replaced by a permissible loss of performance. During the test, degradation of performance is allowed. However, no change of operating state or stored data is allowed to persist after the test.</p>
<b>Criterion C</b>	<p>Loss of function is allowed, provided the function is self-recoverable, or can be restored by the operation of the controls by the user in accordance with the manufacturer's instructions.</p> <p>Functions, and/or information stored in non-volatile memory, or protected by a battery backup, shall not be lost.</p>

## GENERAL PERFORMANCE CRITERIA TEST SETUP

The EUT tested system was configured as the statements of **2.3** Unless otherwise a special operating condition is specified in the follows during the testing.

## ESD TESTING

### TEST SPECIFICATION

Basic Standard:	IEC/EN 61000-4-2
Discharge Impedance:	330 ohm / 150 pF
Required Performance	B
Discharge Voltage:	Air Discharge : 2kV/4kV/8kV (Direct) Contact Discharge : 2kV/4kV (Direct/Indirect)
Polarity:	Positive & Negative
Number of Discharge:	Air Discharge: min. 20 times at each test point Contact Discharge: min. 20 at each test point
Discharge Mode:	Single Discharge
Discharge Period:	1 second minimum

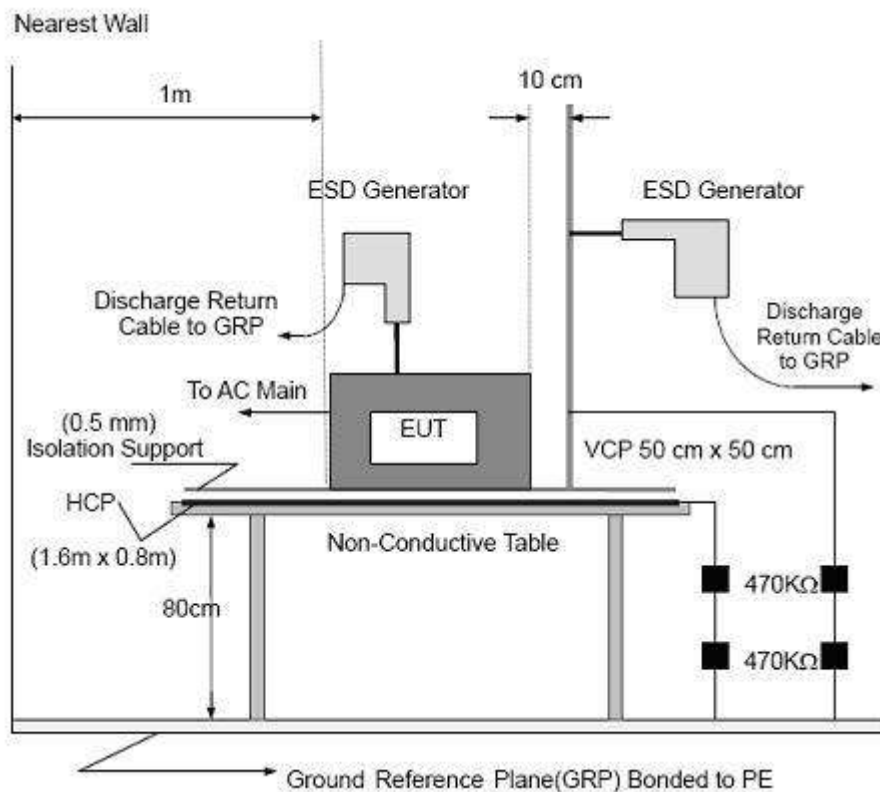
### TEST PROCEDURE

The test generator necessary to perform direct and indirect application of discharges to the EUT in the following manner:

- a. Contact discharge was applied to conductive surfaces and coupling planes of the EUT.  
During the test, it was performed with single discharges. For the single discharge time between successive single discharges was at least 1 second. The EUT shall be exposed to at least 200 discharges, 100 each at negative and positive polarity, at a minimum of four test points. One of the test points shall be subjected to at least 50 indirect discharges to the center of the front edge of the horizontal coupling plane. The remaining three test points shall each receive at least 50 direct contact discharges.  
If no direct contact test points are available, then at least 200 indirect discharges shall be applied in the indirect mode. Test shall be performed at a maximum repetition rate of one discharge per second.  
Vertical Coupling Plane (VCP):  
The coupling plane, of dimensions 0.5m x 0.5m, is placed parallel to, and positioned at a distance 0.1m from, the EUT, with the Discharge Electrode touching the coupling plane.  
The four faces of the EUT will be performed with electrostatic discharge.  
Horizontal Coupling Plane (HCP):  
The coupling plane is placed under to the EUT. The generator shall be positioned vertically at a distance of 0.1m from the EUT, with the Discharge Electrode touching the coupling plane.  
The four faces of the EUT will be performed with electrostatic discharge.
- b. Air discharges at insulation surfaces of the EUT.  
It was at least ten single discharges with positive and negative at the same selected point.



## TEST SETUP



Note:

### TABLE-TOP EQUIPMENT

The configuration consisted of a wooden table 0.8 meters high standing on the Ground Reference Plane. The GRP consisted of a sheet of aluminum at least 0.25mm thick, and 2.5 meters square connected to the protective grounding system. A Horizontal Coupling Plane (1.6m x 0.8m) was placed on the table and attached to the GRP by means of a cable with 940k total impedance. The equipment under test, was installed in a representative system as described in section 7 of IEC /EN 61000-4-2, and its cables were placed on the HCP and isolated by an insulating support of 0.5mm thickness. A distance of 1-meter minimum was provided between the EUT and the walls of the laboratory and any other metallic structure.

### FLOOR-STANDING EQUIPMENT

The equipment under test was installed in a representative system as described in section 7 of IEC/EN 61000-4-2, and its cables were isolated from the Ground Reference Plane by an insulating support of 0.1-meter thickness. The GRP consisted of a sheet of aluminum that is at least 0.25mm thick, and 2.5meters square connected to the protective grounding system and extended at least 0.5 meters from the EUT on all sides.

## TEST RESULTS

EUT :	Purple light spray comb	Model Name. :	CRY-982
Temperature :	25 °C	Relative Humidity :	45%
Pressure :	1010 hPa	Test Date :	2025-05-21
Test Mode :	Running		
Test Power :	DC 5V		

Mode	Air Discharge								Contact Discharge								Criterion	Result
Test level (kV)	2		4		8		15		2		4		6		8			
Test Location	+	-	+	-	+	-	+	-	+	-	+	-	+	-	+	-		
HCP									A	A	A	A					B	PASS
VCP									A	A	A	A						PASS
shell	A	A	A	A	A	A												PASS

### Note:

- 1) +/- denotes the Positive/Negative polarity of the output voltage.
- 2) Test condition:  
Direct / Indirect (HCP/VCP) discharges: Minimum 50 times (Positive/Negative) at each point. Air discharges: Minimum 10 times (Positive/Negative) at each point.
- 3) Test location(s) in which discharge (Air and contact discharge) to be applied illustrated by photos shown in next page(s)
- 4) The Indirect (HCP/VCP) discharges description of test point as following:  
1. left side 2.right side 3.front side 4.rear side.
- 5) N/A - denotes test is not applicable in this test report.

## RS TESTING

### TEST SPECIFICATION

Basic Standard:	IEC/EN 61000-4-3
Required Performance	A
Frequency Range:	80 MHz - 1000 MHz
Field Strength:	3 V/m
Modulation:	1kHz Sine Wave, 80%, AM Modulation
Frequency Step:	1 % of fundamental
Polarity of Antenna:	Horizontal and Vertical
Test Distance:	3 m
Antenna Height:	1.5 m
Dwell Time:	at least 3 seconds

### TEST PROCEDURE

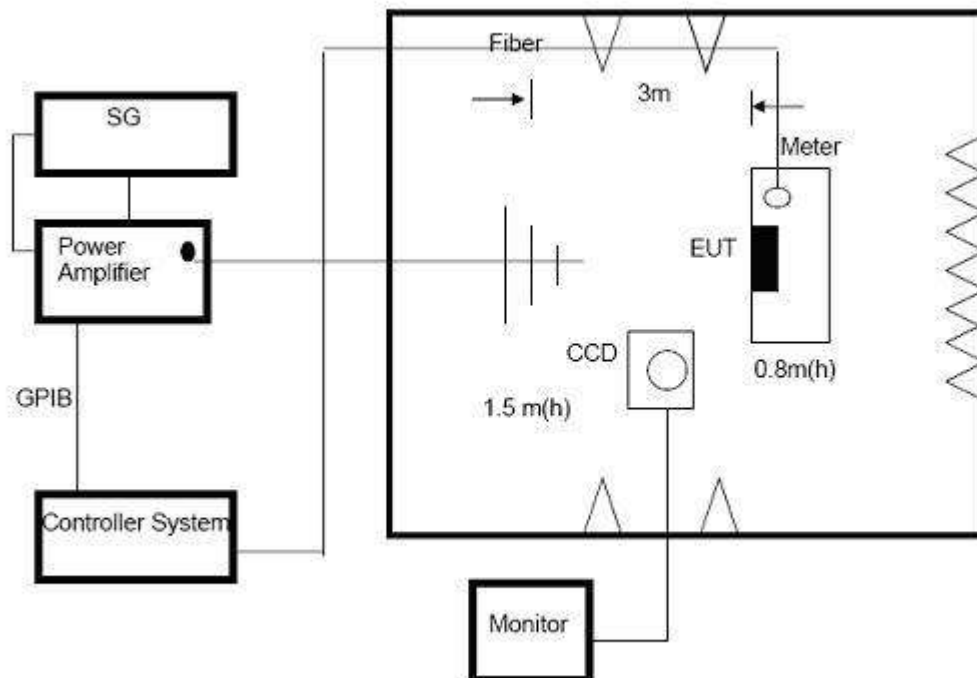
The EUT and support equipment, which are placed on a table that is 0.8 meter above ground and the testing was performed in a fully-anechoic chamber.

The testing distance from antenna to the EUT was 3 meters.

The other condition as following manner:

- The frequency range is swept from 80 MHz to 1000 MHz, & 1400MHz - 2700MHz with the signal 80%amplitude modulated with a 1kHz sine wave. The rate of sweep did not exceed 1.5x 10<sup>-3</sup> decade/s. Where the frequency range is swept incrementally, the step size was 1% of fundamental.
- Sweep Frequency 900 MHz, with the Duty Cycle: 1/8 and Modulation: Pulse 217 Hz(if applicable)
- The dwell time at each frequency shall be not less than the time necessary for the EUT to be able to respond.
- The test was performed with the EUT exposed to both vertically and horizontally polarized fields on each of the four sides.

## TEST SETUP



Note:

### TABLE-TOP EQUIPMENT

The EUT installed in a representative system as described in section 7 of IEC/EN 61000-4-3 was placed on a non-conductive table 0.8 meters in height. The system under test was connected to the power and signal wire according to relevant installation instructions.

### FLOOR-STANDING EQUIPMENT

The EUT installed in a representative system as described in section 7 of IEC/EN 61000-4-3 was placed on a non-conductive wood support 0.1 meters in height. The system under test was connected to the power and signal wire according to relevant installation instructions.

TEST RESULTS

EUT :	Purple light spray comb	Model Name. :	CRY-982
Temperature :	25 °C	Relative Humidity :	60%
Pressure :	1010 hPa	Test Date :	2025-05-21
Test Mode :	Running		
Test Power :	DC 5V		

Frequency Range (MHz)	RF Field Position	R.F. Field Strength	Azimuth	Perform. Criteria	Results	Judgment
80MHz - 1000MHz	H / V	3 V/m (rms) AM Modulated 1000Hz, 80%	Front	<b>A</b>	<b>A</b>	<b>PASS</b>
			Rear			
			Left			
			Right			

Note:

- 1) N/A - denotes test is not applicable in this test report.
- 2) Criteria A: There was no change operated with initial operating during the test.
- 3) Criteria B: The EUT function loss during the test, but self-recoverable after the test.
- 4) Criteria C: The system shut down during the test.

## EFT/BURST TESTING

### TEST SPECIFICATION

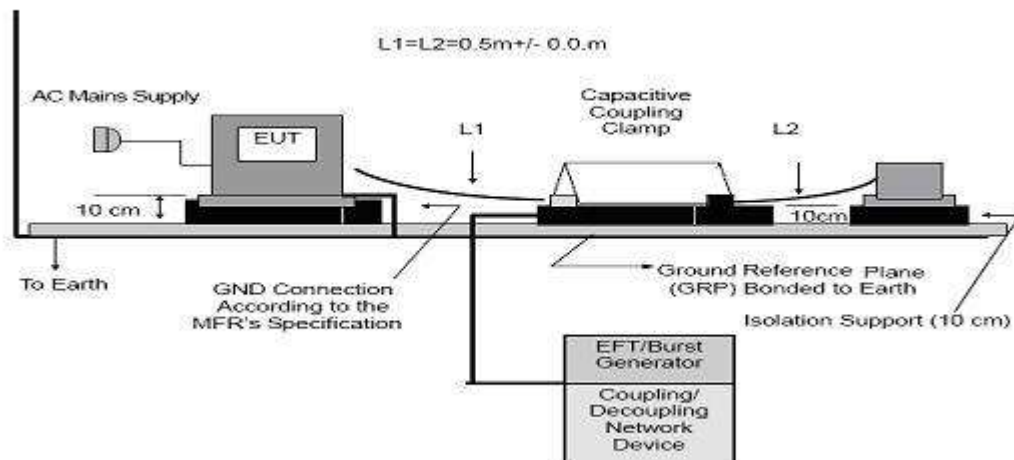
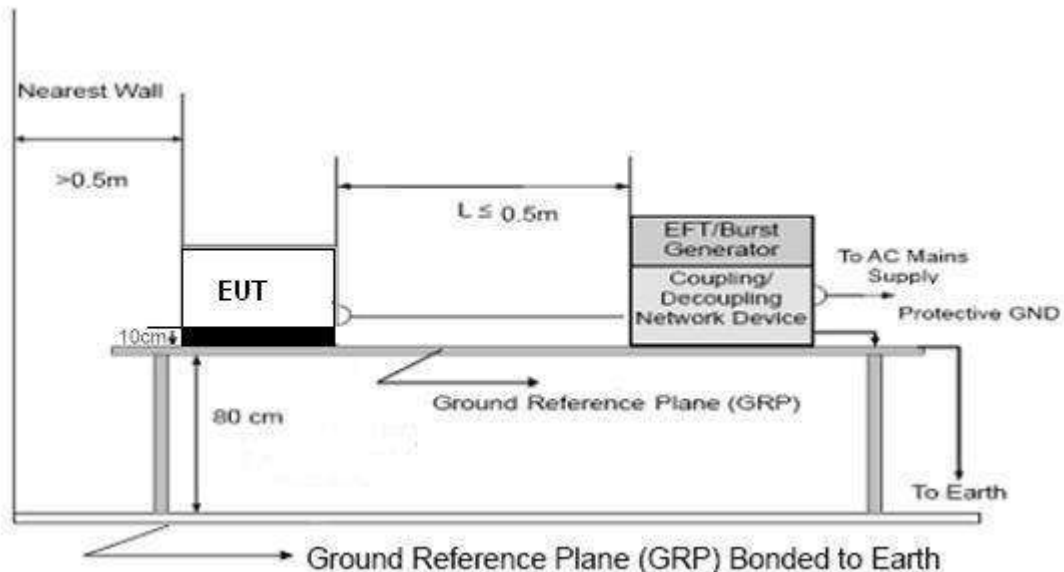
Basic Standard:	IEC/EN 61000-4-4
Required Performance	B
Test Voltage:	Power Line : 1 kV Signal/Control Line : 0.5 KV
Polarity:	Positive & Negative
Impulse Frequency:	5 kHz
Impulse Wave shape :	5/50 ns
Burst Duration:	15 ms
Burst Period:	300 ms
Test Duration:	Not less than 1 min.

### TEST PROCEDURE

The EUT and its simulators were placed on a ground reference plane and were insulated from it by a wood support 0.1m + 0.01m thick. The ground reference plane was 1m\*1m metallic sheet with 0.65mm minimum thickness. The other condition as following manner:

- The length of power cord between the coupling device and the EUT should not exceed 1 meter.
- Both positive and negative polarity discharges were applied.
- The duration time of each test sequential was 1 minute.

## TEST SETUP



Note:

### TABLE-TOP EQUIPMENT

The configuration consisted of a wooden table (0.8m high) standing on the Ground Reference Plane. The GRP consisted of a sheet of aluminum (at least 0.25mm thick and 2.5m square) connected to the protective grounding system. A minimum distance of 0.5m was provided between the EUT and the walls of the laboratory or any other metallic structure.

### FLOOR-STANDING EQUIPMENT

The EUT installed in a representative system as described in section 7 of IEC/EN 61000-4-4 and its cables, were isolated from the Ground Reference Plane by an insulating support that is 0.1-meter thick. The GRP consisted of a sheet of aluminum (at least 0.25mm thick and 2.5m square) connected to the protective grounding system.

**TEST RESULTS**

EUT :	Purple light spray comb	Model Name. :	CRY-982
Temperature :	25 °C	Relative Humidity :	60%
Pressure :	1010 hPa	Test Date :	2025-05-21
Test Mode :	Running		
Test Power :	DC 5V		

Coupling Line		Test level (kV)								Criterion	Result
		0.5		1		2		4			
		+	-	+	-	+	-	+	-		
AC line	L										N/A
	N										N/A
	PE										N/A
	L+N										N/A
	L+PE										N/A
	N+PE										N/A
	L+N+PE										N/A
DC Line											N/A
Signal Line											N/A

**Note:**

- 1) +/- denotes the Positive/Negative polarity of the output voltage.
- 2) N/A - denotes test is not applicable in this test report.
- 3) Criteria A: There was no change operated with initial operating during the test.
- 4) Criteria B: The EUT function loss during the test, but self-recoverable after the test.
- 5) Criteria C: The system shut down during the test.



## SURGE TESTING

### TEST SPECIFICATION

Basic Standard:	IEC/EN 61000-4-5
Required Performance	B
Wave-Shape:	Combination Wave 1.2/50 us Open Circuit Voltage 8 /20 us Short Circuit Current
Test Voltage:	Power Line : 0.5 kV, 1 kV, 2 kV
Surge Input/Output:	L-N, L-PE, N-PE
Generator Source:	2 ohm between networks
Impedance:	12 ohm between network and ground
Polarity:	Positive/Negative
Phase Angle:	0 /90/180/270°
Pulse Repetition Rate:	1 time / min. (maximum)
Number of Tests:	5 positive and 5 negative at selected points

### TEST PROCEDURE

a. For EUT power supply:

The surge is to be applied to the EUT power supply terminals via the capacitive coupling network. Decoupling networks are required in order to avoid possible adverse effects on equipment not under test that may be powered by the same lines, and to provide sufficient decoupling impedance to the surge wave. The power cord between the EUT and the coupling/decoupling networks shall be 2meters in length (or shorter).

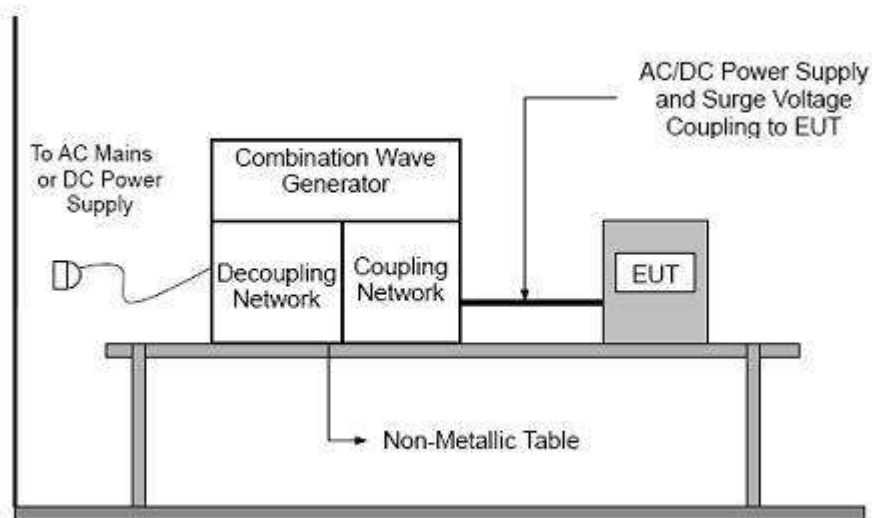
b. For test applied to unshielded unsymmetrically operated interconnection lines of EUT:

The surge is applied to the lines via the capacitive coupling. The coupling /decoupling networks shall not influence the specified functional conditions of the EUT. The interconnection line between the EUT and the coupling/decoupling networks shall be 2 meters in length (or shorter).

c. For test applied to unshielded symmetrically operated interconnection /telecommunication lines of EUT:

d. The surge is applied to the lines via gas arrestors coupling. Test levels below the ignition point of the coupling arrestor cannot be specified. The interconnection line between the EUT and the coupling/decoupling networks shall be 2 meters in length (or shorter).

## TEST SETUP



TEST RESULTS

EUT :	Purple light spray comb	Model Name. :	CRY-982
Temperature :	25 °C	Relative Humidity :	60%
Pressure :	1010 hPa	Test Date :	2025-05-21
Test Mode :	Running		
Test Power :	DC 5V		

Coupling Line			Test level								Criterion	Result
			0.5 kV		1 kV		2 kV		4 kV			
			+	-	+	-	+	-	+	-		
AC line	L-N	0°										N/A
		90°										
		180°										
		270°										
	L-PE	0°										N/A
		90°										
		180°										
		270°										
	N-PE	0°										N/A
		90°										
		180°										
		270°										
DC Line												
Signal Line												

Note:

- 1) Polarity and Numbers of Impulses : 5 Pst / Ngst at each tested mode.
- 2) N/A - denotes test is not applicable in this Test Report.
- 3) Criteria A: There was no change operated with initial operating during the test.
- 4) Criteria B: The EUT function loss during the test, but self-recoverable after the test.
- 5) Criteria C: The system shut down during the test.

## INJECTION CURRENT TESTING

### TEST SPECIFICATION

Basic Standard:	IEC/EN 61000-4-6
Required Performance	A
Frequency Range:	0.15 MHz - 80 MHz
Field Strength:	3 Vr.m.s.
Modulation:	1kHz Sine Wave, 80%, AM Modulation
Frequency Step:	1 % of fundamental
Dwell Time:	at least 3 seconds

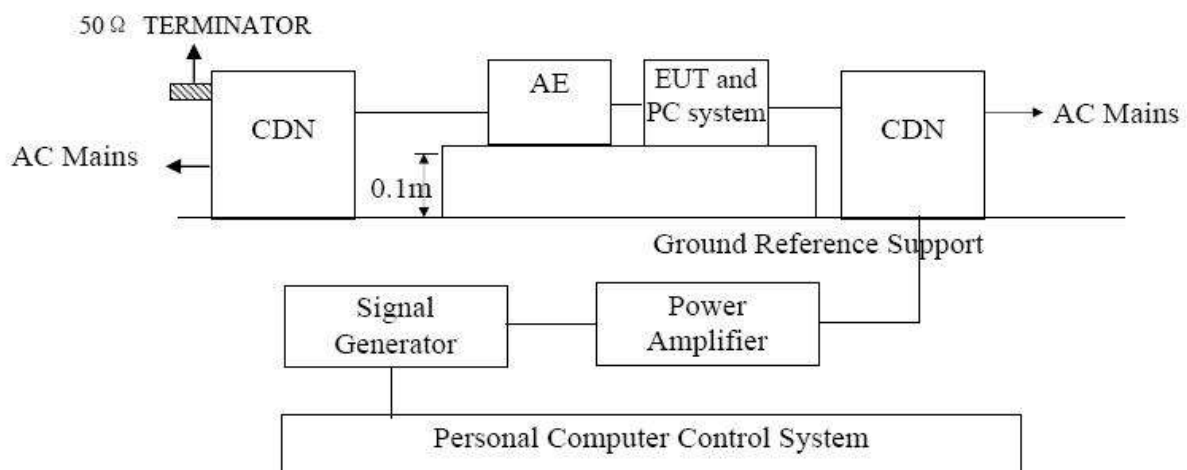
### TEST PROCEDURE

The EUT are placed on an insulating support 0.1m high above a ground reference plane. CDN (coupling and decoupling device) is placed on the ground plane about 0.3m from EUT. Cables between CDN and EUT are as short as possible, and their height above the ground reference plane shall be between 30 and 50mm (where possible). The disturbance signal described below is injected to EUT through CDN.

The other condition as following manner:

- The frequency range is swept from 150 KHz to 80 MHz, with the signal 80%amplitude modulated with a 1kHz sine wave. The rate of sweep did not exceed  $1.5 \times 10^{-3}$  decade/s. Where the frequency range is swept incrementally, the step size was 1% of fundamental.
- The dwell time at each frequency shall be not less than the time necessary for the EUT to be able to respond.

### TEST SETUP



### NOTE:

#### FLOOR-STANDING EQUIPMENT

The equipment to be tested is placed on an insulating support of 0.1 meters height above a ground reference plane. All relevant cables shall be provided with the appropriate coupling and decoupling devices at a distance between 0.1 meters and 0.3 meters from the projected geometry of the EUT on the ground reference plane.

TEST RESULTS

EUT :	Purple light spray comb	Model Name. :	CRY-982
Temperature :	25 °C	Relative Humidity :	60%
Pressure :	1010 hPa	Test Date :	2025-05-21
Test Mode :	Running		
Test Power :	DC 5V		

Test Ports (Mode)	Freq. Range MHz)	Field Strength	Perform. Criteria	Results	Judgment
Input/ Output AC. Power Port	0.15 ---80	3V(rms) AM Modulated 1000Hz, 80%	<b>A</b>	<b>A</b>	<b>PASS</b>
Input/ Output DC. Power Port	0.15 --- 80		<b>A</b>	<b>N/A</b>	<b>N/A</b>
Signal Line	0.15 --- 80		<b>A</b>	<b>N/A</b>	<b>N/A</b>

Note:

- 1) N/A - denotes test is not applicable in this Test Report.
- 2) Criteria A: There was no change operated with initial operating during the test.
- 3) Criteria B: The EUT function loss during the test, but self-recoverable after the test.
- 4) Criteria C: The system shut down during the test.

## VOLTAGE INTERRUPTION/DIPS TESTING

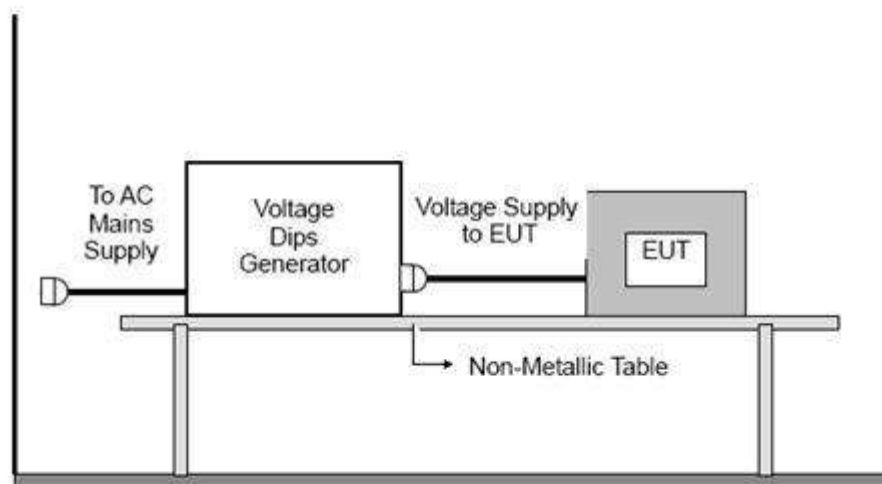
### TEST SPECIFICATION

Basic Standard:	IEC/EN 61000-4-11
Required Performance:	C (For 0% Voltage Dips) C (For 30% Voltage Dips) C (For 60% Voltage Dips)
Test Duration Time:	Minimum three test events in sequence
Interval between Event:	Minimum ten seconds
Phase Angle:	0°/45°/90°/135°/180°/225°/270°/315°/360°
Test Cycle:	3 times

### TEST PROCEDURE

The EUT shall be tested for each selected combination of test levels and duration with a sequence of three dips/interruptions with intervals of 10 s minimum (between each test event). Each representative mode of operation shall be tested. Abrupt changes in supply voltage shall occur at zero crossings of the voltage waveform.

### TEST SETUP



**TEST RESULTS**

EUT :	Purple light spray comb	Model Name. :	CRY-982
Temperature :	25 °C	Relative Humidity :	60%
Pressure :	1010 hPa	Test Date :	2025-05-21
Test Mode :	Running		
Test Power :	DC 5V		

Interruption & Dips	Duration (T)	Perform Criteria	Results	Judgment
Voltage dip 0%	0.5	C	B	PASS
Voltage dip 60%	10	C	B	PASS
Voltage dip 30%	50	C	B	PASS

**Note:**

- 1). N/A - denotes test is not applicable in this test report.
- 2) Criteria A: There was no change operated with initial operating during the test.
- 3) Criteria B: The EUT function loss during the test, but self-recoverable after the test.
- 4) Criteria C: The system shut down during the test.



EUT TEST PHOTO

RE



CE



EUT



Fig.1



Fig.2





Fig.3

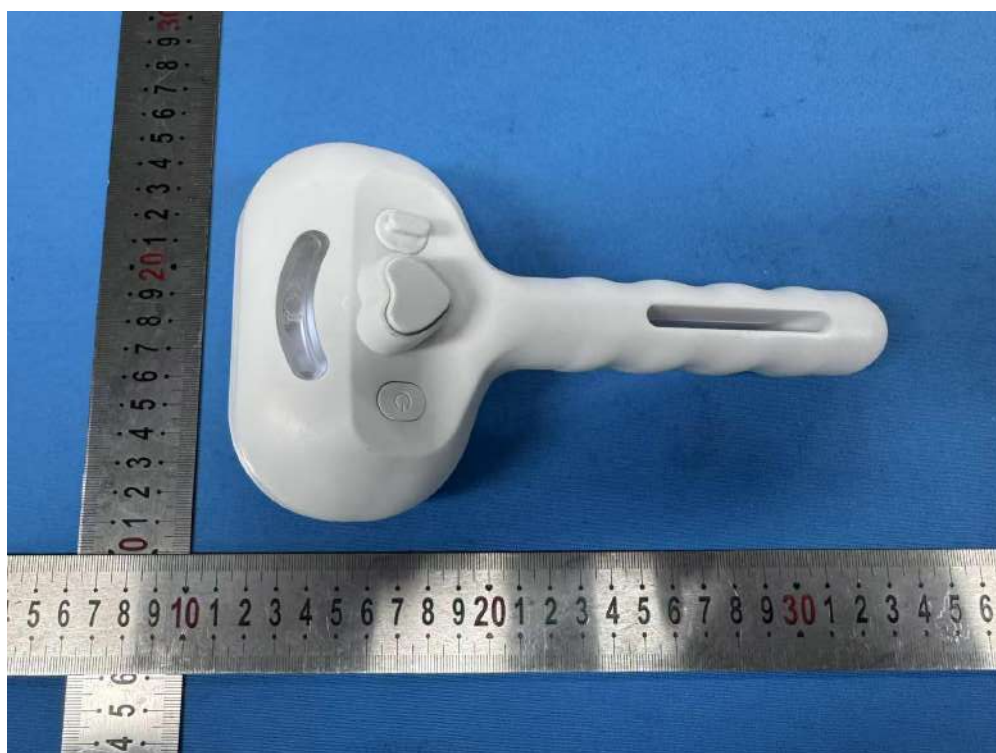


Fig.4



Fig.5



Fig.6





Fig.7

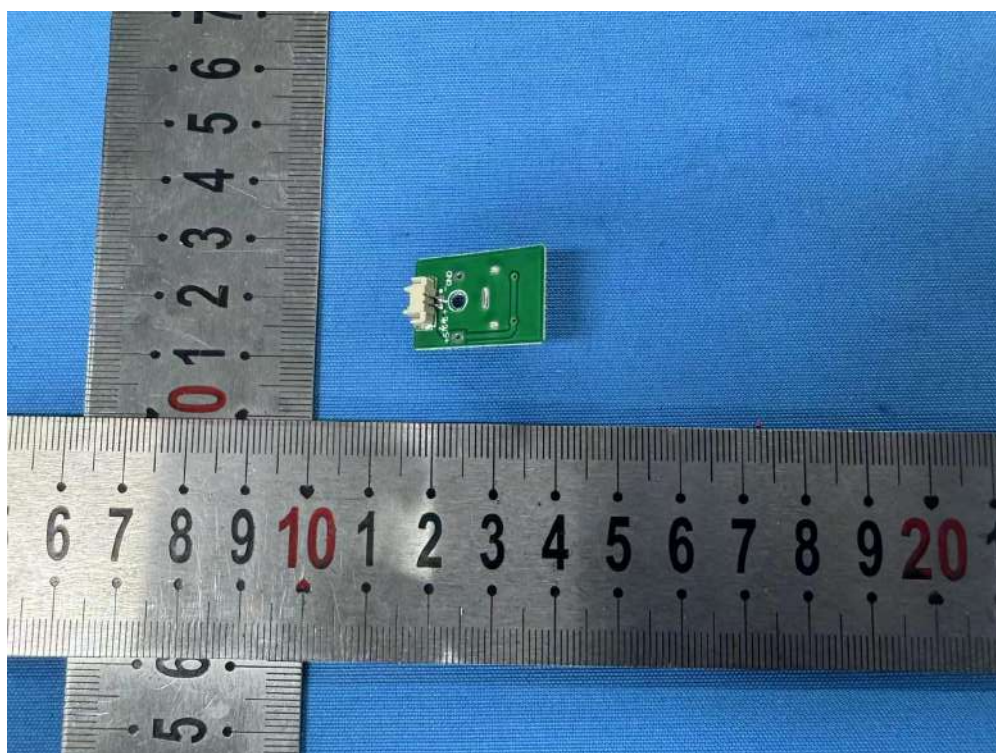


Fig.8

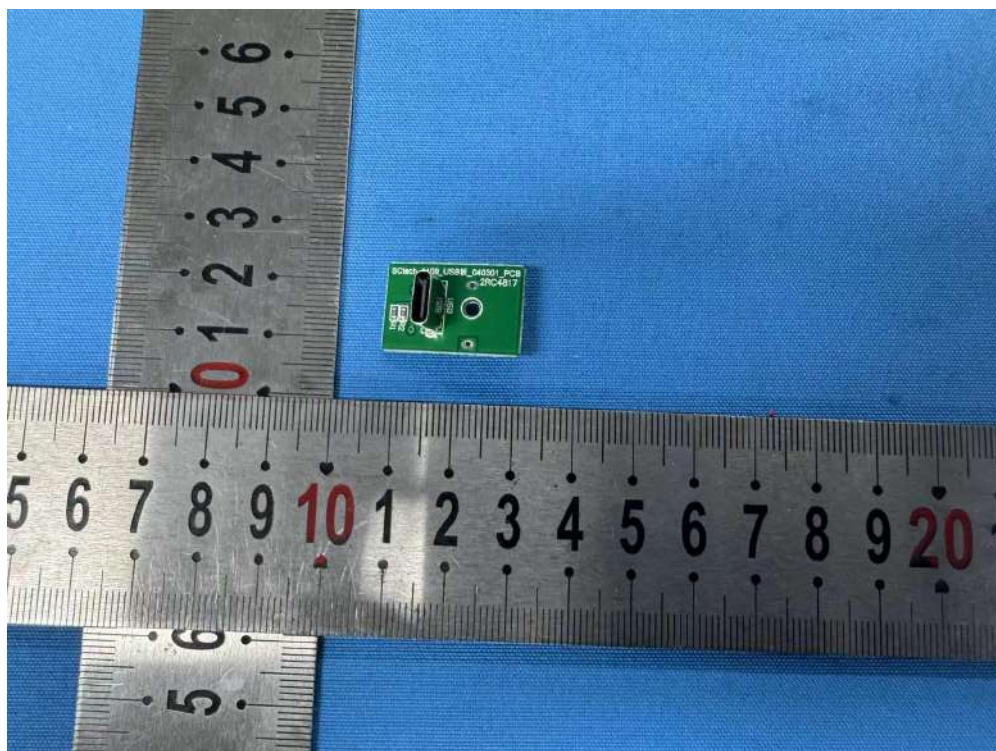


Fig.9

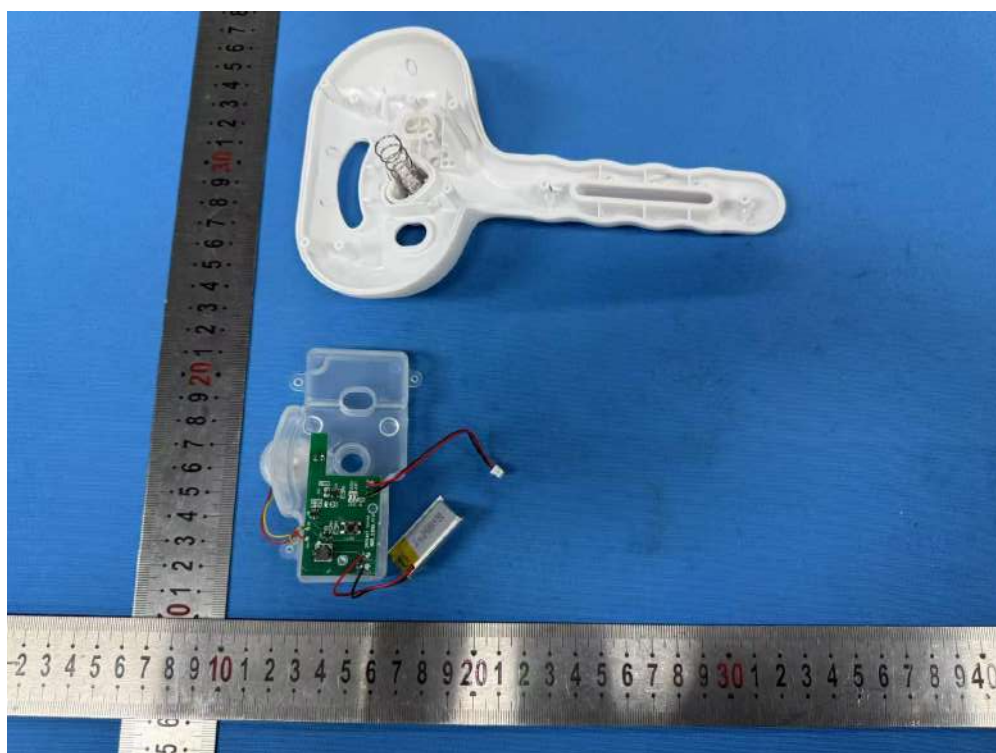


Fig.10



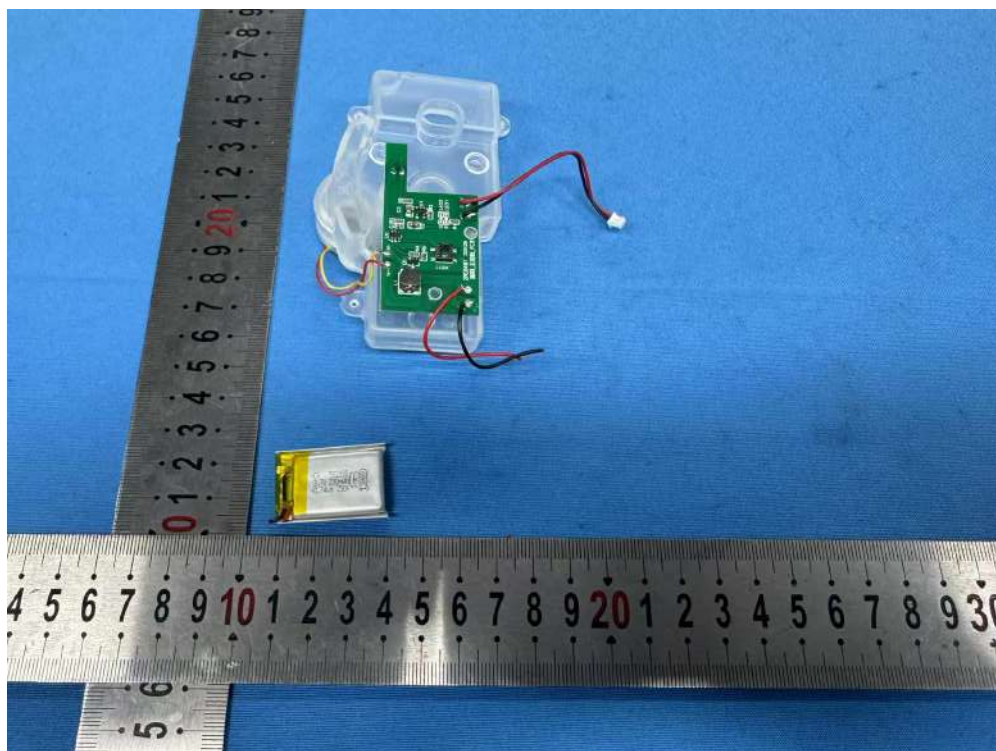


Fig.11



Fig.12

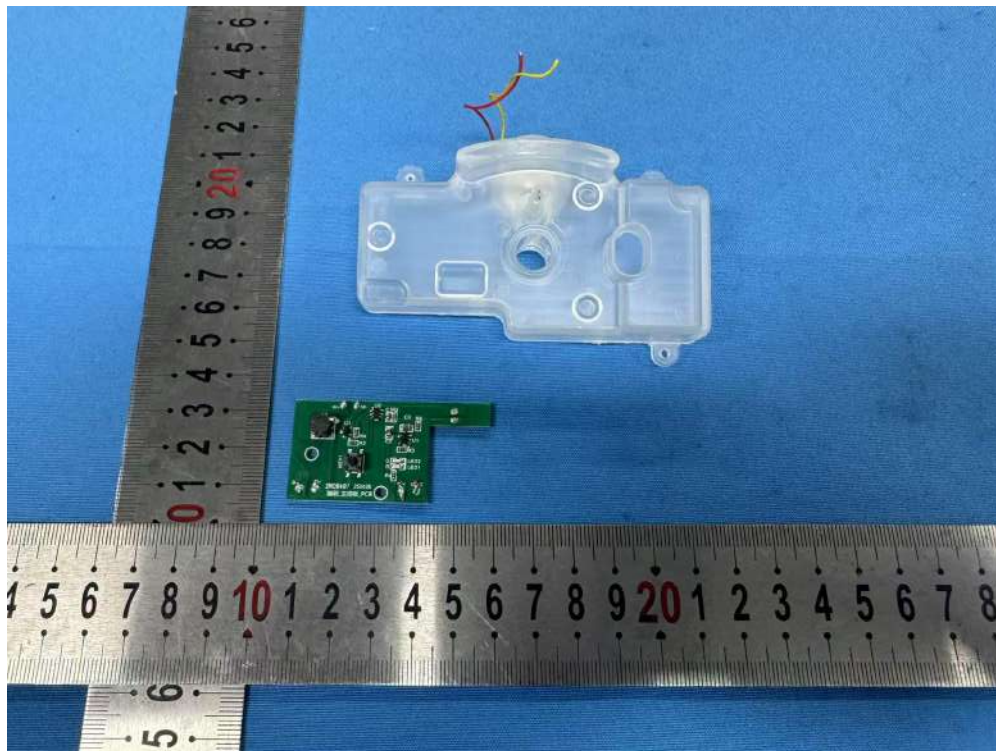


Fig.13

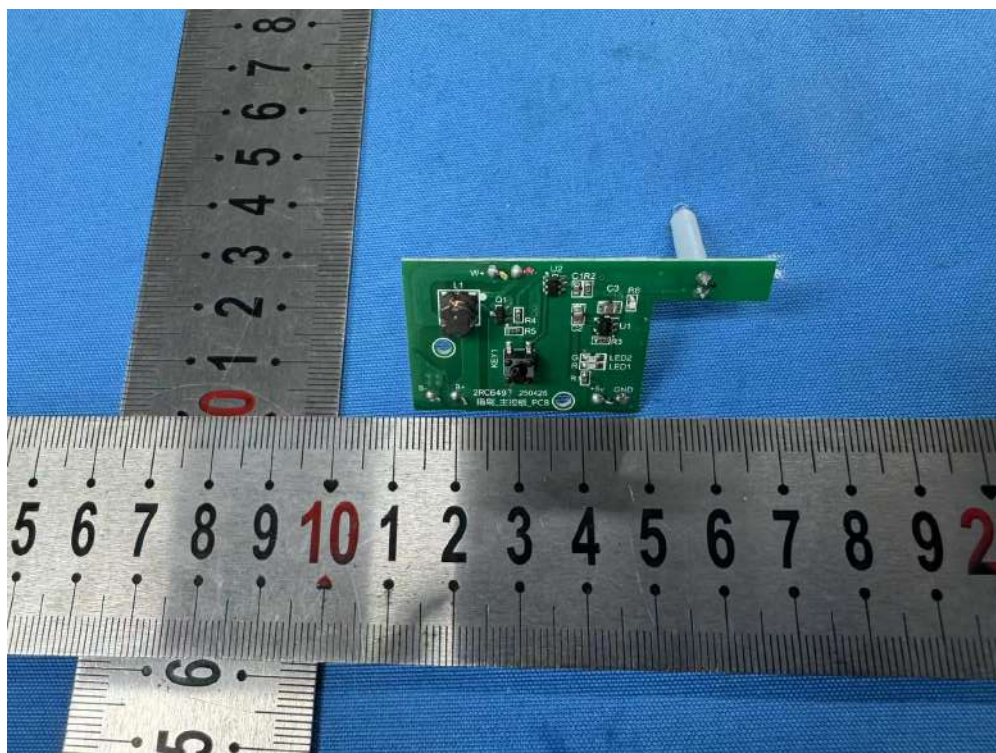


Fig.14



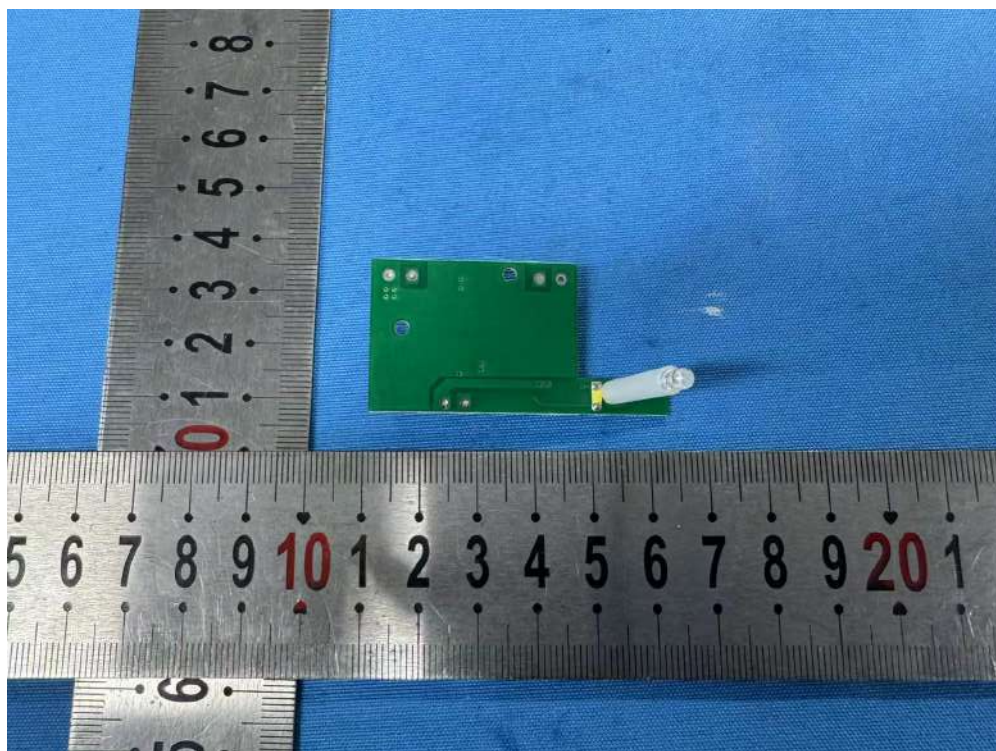


Fig.15

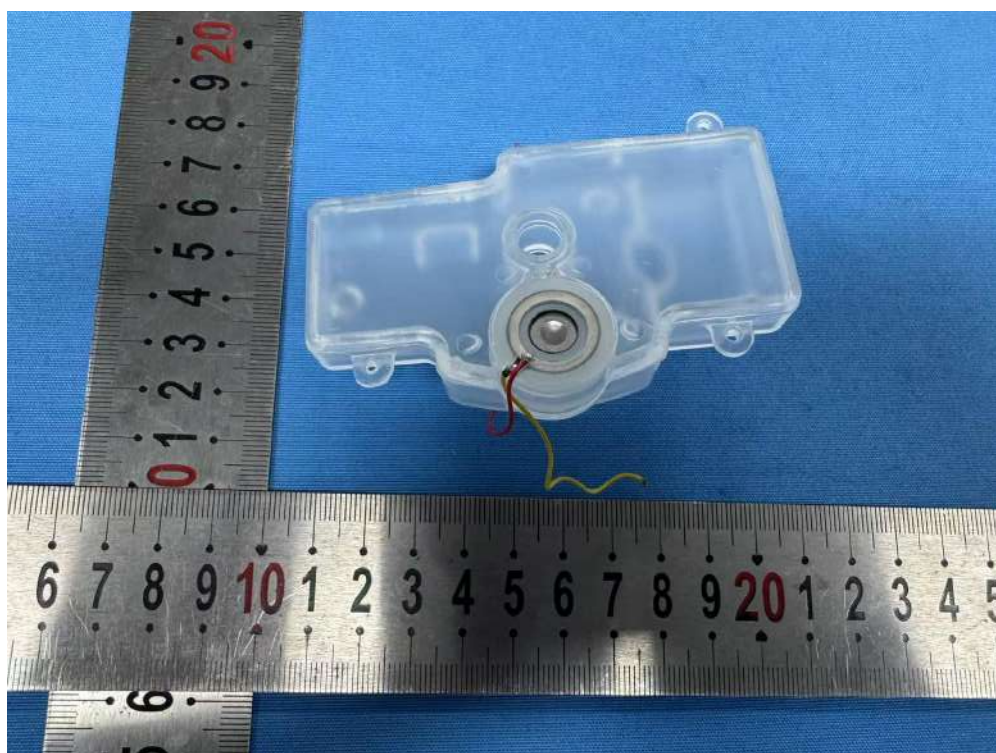


Fig.16

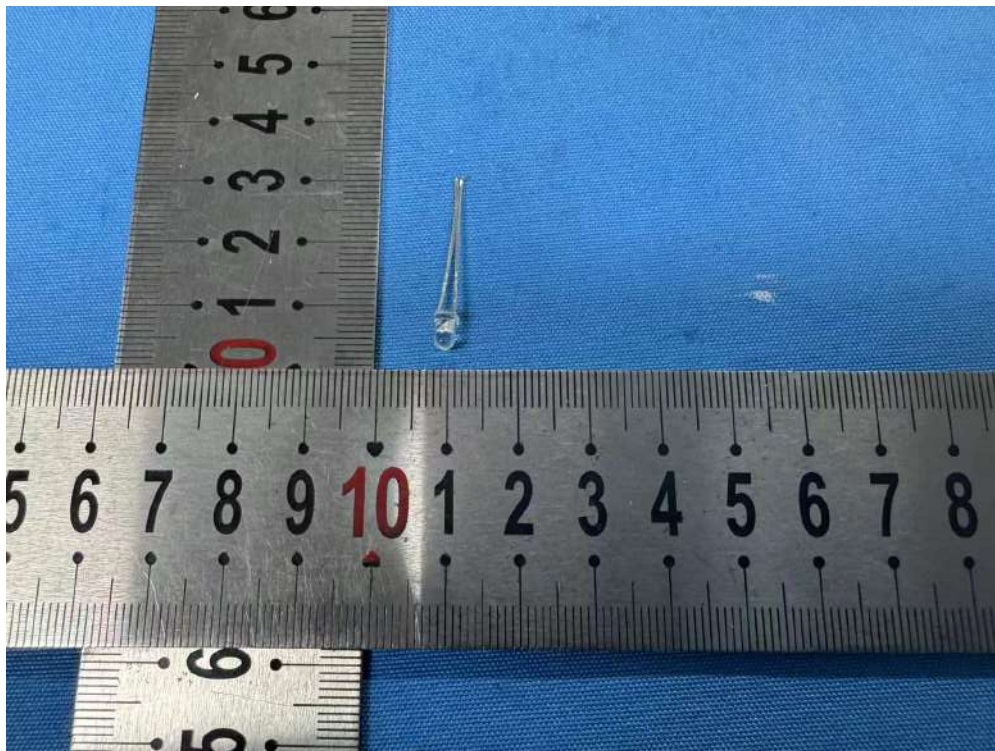


Fig.17

\*\*\*\*\*END OF REPORT\*\*\*\*\*



**Dongguan Anhua Testing Technology Co., Ltd.**

## **SUPPLIER'S DECLARATON OF CONFORMITY**

According to Directive: **FCC part 15**

Ref. No.: AH2025051603

Product: Purple light spray comb  
Trade Name: N/A  
Applicant: Ruian Feiyue Craft Gift Factory  
Address: No. 9, Lane 7, Linyang Street, Linbei Village, Nanbin Street, Rui'an City, Wenzhou City, Zhejiang Province  
Manufacturer: Ruian Feiyue Craft Gift Factory  
Address: No. 9, Lane 7, Linyang Street, Linbei Village, Nanbin Street, Rui'an City, Wenzhou City, Zhejiang Province  
Model: CRY-982

The test sample of product has been passed, the test according to requirements of the following standards:

Standard(s):  
FCC Part 15 Subpart B and ANSI C63.4-2014;

Test report(s) No.:  
AH20250516E03

This device in conformance with Part 15 of the FCC Rules. Operation of this production is subject to the following two conditions:

- 1: This device may not cause harmful interference.
- 2: This device must accept any interference received, including interference that may cause undesired operation.



Approved by:

Date :



**Dongguan Anhua Testing Technology Co., Ltd.**

Address: Room 401, Building 1, No. 35, Liaobu Jinyuan Road, Liaobu, Dongguan, Guangdong, China  
Tel: 0769-86057700 Fax: 0769-86057700 [www.anhua-lab.com](http://www.anhua-lab.com)



## FCC Test Report

Equipment  
under Test : Purple light spray comb

Model /Type : CRY-982

Listed Models : N/A

**Applicant** : Ruian Feiyue Craft Gift Factory

Address : No. 9, Lane 7, Linyang Street, Linbei Village, Nanbin Street, Rui'an  
City, Wenzhou City, Zhejiang Province

**Manufacturer** : Ruian Feiyue Craft Gift Factory

Address : No. 9, Lane 7, Linyang Street, Linbei Village, Nanbin Street, Rui'an  
City, Wenzhou City, Zhejiang Province

**Laboratory** : **Dongguan Anhua Testing Technology Co., Ltd.**

Address : Room 401, Building 1, No. 35, Liaobu Jinyuan Road, Liaobu,  
Dongguan, Guangdong, China

Tel : 0769-86057700

Fax : 0769-86057700

Website : [www.anhua-lab.com](http://www.anhua-lab.com)

The test report merely corresponds to the test sample. It is not permitted to copy extracts of these test result without the written permission of the test laboratory.

## TEST RESULT CERTIFICATION

**Applicant's name**..... Ruian Feiyue Craft Gift Factory

**Address**..... No. 9, Lane 7, Linyang Street, Linbei Village, Nanbin Street, Rui'an City, Wenzhou City, Zhejiang Province

**Manufacturer's Name**..... Ruian Feiyue Craft Gift Factory

**Address**..... No. 9, Lane 7, Linyang Street, Linbei Village, Nanbin Street, Rui'an City, Wenzhou City, Zhejiang Province

### Product description

**Product name**..... Purple light spray comb

**Test model:** ..... CRY-982

**Standards**..... FCC Part 15 Subpart B and ANSI C63.4-2014;

This device described above has been tested by ANHUA, and the test results show that the equipment under test (EUT) is in compliance with Part 15 of FCC Rules. And it is applicable only to the tested sample identified in the report.

This report shall not be reproduced except in full, without the written approval of ANHUA, this document may be altered or revised by ANHUA, personal only, and shall be noted in the revision of the document.

**Date of Test**.....

**Date (s) of performance of tests**..... May.16, 2025 ~May.23, 2025

**Date of Issue**..... May.23, 2025

**Test Result**..... **Pass**

Testing Engineer : Shichang Liu  
(Shichang Liu)  
Technical Manager : Baofeng Ma  
(Baofeng Ma)  
Authorized Signatory : Fanyong Zeng  
(Fanyong Zeng)



Table of Contents	Page
<b>1 . TEST SUMMARY</b>	<b>4</b>
1.1 TEST FACILITY	5
1.2 MEASUREMENT UNCERTAINTY	5
<b>2 . GENERAL INFORMATION</b>	<b>6</b>
2.1 GENERAL DESCRIPTION OF EUT	6
2.2 DESCRIPTION OF TEST MODES	7
2.3 DESCRIPTION OF TEST SETUP	8
2.4 DESCRIPTION TEST PERIPHERAL AND EUT PERIPHERAL	8
2.5 MEASUREMENT INSTRUMENTS LIST	9
<b>3 . EMC EMISSION TEST</b>	<b>11</b>
3.1 CONDUCTED EMISSION MEASUREMENT	11
3.1.1 POWER LINE CONDUCTED EMISSION	11
3.1.2 TEST PROCEDURE	12
3.1.3 TEST SETUP	12
3.1.4 EUT OPERATING CONDITIONS	12
3.1.5 TEST RESULTS	13
3.2 RADIATED EMISSION MEASUREMENT	15
3.2.1 LIMITS OF RADIATED EMISSION MEASUREMENT	15
3.2.2 TEST PROCEDURE	15
3.2.3 TEST SETUP	16
3.2.4 EUT OPERATING CONDITIONS	16
3.2.5 TEST RESULTS	17
3.2.6 TEST RESULTS(Above 1GHz)	
<b>4 . EUT TEST PHOTO</b>	<b>20</b>
<b>ATTACHMENT PHOTOGRAPHS OF EUT</b>	

## TEST SUMMARY

Test procedures according to the technical standards:

EMC Emission				
Standard	Test Item	Limit	Judgment	Remark
FCC Part 15 Subpart B and ANSI C63.4-2014;	Conducted Emission	Class B	PASS	
	Radiated Emission	Class B	PASS	

### NOTE:

- (1) 'N/A' denotes test is not applicable in this Test Report
- (2) For client's request and manual description, the test will not be executed.

#### TEST FACILITY

Dongguan Anhua Testing Technology Co., Ltd.

Room 401, Building 1, No. 35, Liaobu Jinyuan Road, Liaobu, Dongguan, Guangdong, China

#### MEASUREMENT UNCERTAINTY

The reported uncertainty of measurement  $y \pm U$ , where expanded uncertainty  $U$  is based on a standard uncertainty multiplied by a coverage factor of  $k=2$ , providing a level of confidence of approximately **95** %.

Test Item	Uncertainty
Conducted Emission	2.6dB
Radiated Emission(Below 1G)	4.56dB(distance:3m; Polarize:V)
	4.42dB(distance:3m; Polarize:H)
Radiated Emission(1GHz-18GHz)	3.78dB(distance:3m; Polarize:V)
	3.69dB(distance:3m; Polarize:H)



## GENERAL INFORMATION

### GENERAL DESCRIPTION OF EUT

Equipment	Purple light spray comb	
Brand	N/A	
Model Name	CRY-982	
Additional Model Number(s)	N/A	
Model Difference	N/A	
Product Description	EUT is a Purple light spray comb	
	oscillator frequency:	N/A
	Connecting I/O port:	N/A
	Based on the application, features, or specification exhibited in User's Manual, the EUT is considered as an ITE/Computing Device. More details of EUT technical specification, please refer to the User's Manual.	
Rating	DC 5V,5W	

## DESCRIPTION OF TEST MODES

To investigate the maximum EMI emission characteristics generates from EUT, the test system was pre-scanning tested base on the consideration of following EUT operation mode or test configuration mode which possible have effect on EMI emission level. Each of these EUT operation mode(s) or test configuration mode(s) mentioned above was evaluated respectively.

Pretest Mode	Description
Mode 1	Running

For Conducted Test	
Final Test Mode	Description
Mode 1	Running

For Radiated Test	
Final Test Mode	Description
Mode 1	Running

## DESCRIPTION OF TEST SETUP

Mode 1:

E-1  
EUT

## DESCRIPTION TEST PERIPHERAL AND EUT PERIPHERAL

The EUT has been tested as an independent unit together with other necessary accessories or support units. The following support units or accessories were used to form a representative test configuration during the tests.

Item	Equipment	Brand	Model/Type No.	Series No.	Note
E-1	Purple light spray comb	N/A	CRY-982	N/A	EUT

Item	Shielded Type	Ferrite Core	Length	Note

Note:

- (1) The support equipment was authorized by Declaration of Confirmation.
- (2) For detachable type I/O cable should be specified the length in cm in 『Length』 column.
- (3) “YES” means “shielded” “with core”; “NO” means “unshielded” “without core”.

**MEASUREMENT INSTRUMENTS LIST**
**CONDUCTED TEST SITE**
**Radiation Test equipment**

Item	Kind of Equipment	Manufacturer	Type No.	Serial No.	Last calibration	Calibrated until	Calibration period
1	LISN	R&S	ENV216	101334	Nov. 09,24	Nov. 08,25	1 year
2	LISN	SCHWARZBECK	NNLK 8129	8129267	Nov. 09,24	Nov. 08,25	1 year
3	Pulse Limiter	SCHWARZBECK	VTSD 9561F	9716	Nov. 09,24	Nov. 08,25	1 year
4	50Ω Switch	ANRITSU CORP	MP59B	6200983704	Nov. 09,24	Nov. 08,25	1 year
5	Test Cable	N/A	C01	N/A	Nov. 09,24	Nov. 08,25	1 year
6	Test Cable	N/A	C02	N/A	Nov. 09,24	Nov. 08,25	1 year
7	Test Cable	N/A	C03	N/A	Nov. 09,24	Nov. 08,25	1 year
8	EMI Test Receiver	R&S	ESCI	101318	Nov. 09,24	Nov. 08,25	1 year
9	Passive Voltage Probe	ESHBZ-001-010M-Z3	R&S	100173	Nov. 09,24	Nov. 08,25	1 year
10	Triple-Loop Antenna	EVERFINE	LIA-2	11020016	Nov. 09,24	Nov. 08,25	1 year
11	Absorbing Clamp	R&S	MDS-21	100423	Nov. 09,24	Nov. 08,25	1 year

**Conduction Test equipment**

Item	Kind of Equipment	Manufacturer	Type No.	Serial No.	Last calibration	Calibrated until	Calibration period
1	Bilog Antenna	TESEQ	CBL6111D	31437	Nov. 09,24	Nov. 08,25	1 year
2	Test Cable	N/A	R-01	N/A	Nov. 09,24	Nov. 08,25	1 year
3	Test Cable	N/A	R-02	N/A	Nov. 09,24	Nov. 08,25	1 year
4	EMI Test Receiver	Rohde&Schwarz	ESVD	847312/008	Nov. 09,24	Nov. 08,25	1 year
5	Antenna Mast	EM	SC100_1	N/A	N/A	N/A	N/A
6	Turn Table	EM	SC100	060533	N/A	N/A	N/A
7	50Ω Switch	Anritsu Corp	MP59B	6200983705	Nov. 09,24	Nov. 08,25	1 year
8	Spectrum Analyzer	Aglient	E4407B	160400005	Nov. 09,24	Nov. 08,25	1 year



## Dongguan Anhua Testing Technology Co., Ltd.

Report No. AH20250516E03  
- Page 10 of 29 -

9	Horn Antenna	EM	EM-AH-10180	2011071402	Nov. 09,24	Nov. 08,25	1 year
10	Amplifier	EM	EM-30180	060536	Nov. 09,24	Nov. 08,25	1 year

## EMC EMISSION TEST

### CONDUCTED EMISSION MEASUREMENT

#### POWER LINE CONDUCTED EMISSION (Frequency Range 150KHz-30MHz)

FREQUENCY (MHz)	Class A (dBuV)		Class B (dBuV)	
	Quasi-peak	Average	Quasi-peak	Average
0.15 -0.5	79.00	66.00	66 - 56 *	56 - 46 *
0.50 -5.0	73.00	60.00	56.00	46.00
5.0 -30.0	73.00	60.00	60.00	50.00

Note:

- (1) The tighter limit applies at the band edges.
- (2) The limit of " \* " marked band means the limitation decreases linearly with the logarithm of the frequency in the range.

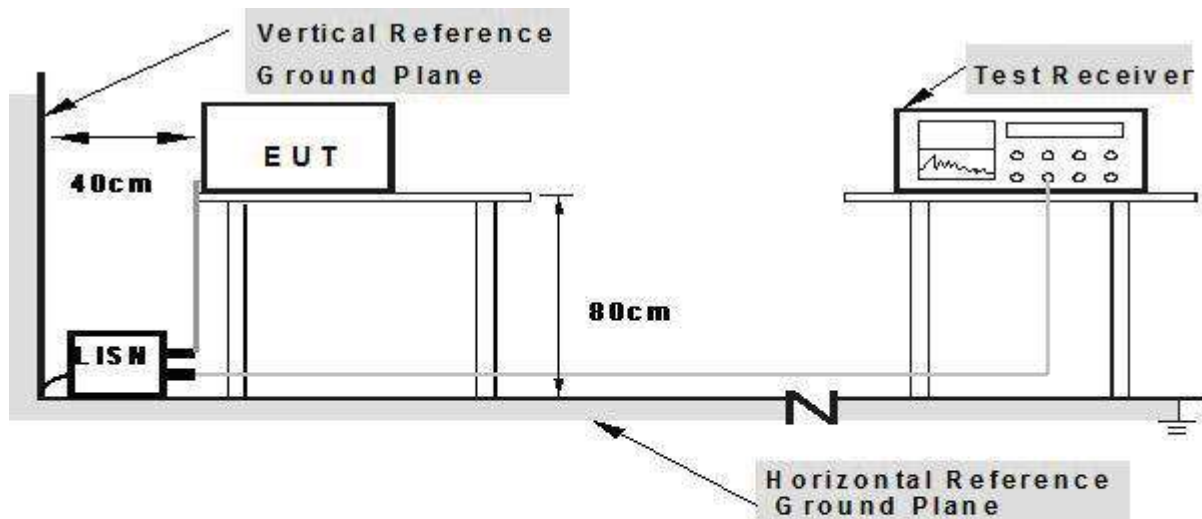
The following table is the setting of the receiver

Receiver Parameters	Setting
Attenuation	10 dB
Start Frequency	0.15 MHz
Stop Frequency	30 MHz
IF Bandwidth	9 kHz

## TEST PROCEDURE

- The EUT was placed 0.8 meters from the horizontal ground plane with EUT being connected to the power mains through a line impedance stabilization network (LISN). All other support equipments powered from additional LISN(s). The LISN provide 50 Ohm/ 50uH of coupling impedance for the measuring instrument.
- Interconnecting cables that hang closer than 40 cm to the ground plane shall be folded back and forth in the center forming a bundle 30 to 40 cm long.
- I/O cables that are not connected to a peripheral shall be bundled in the center. The end of the cable may be terminated, if required, using the correct terminating impedance. The overall length shall not exceed 1 m.
- LISN at least 80 cm from nearest part of EUT chassis.
- For the actual test configuration, please refer to the related Item –EUT Test Photos.

## TEST SETUP



**Note: 1.Support units were connected to second LISN.**

**2.Both of LISN s (AMN) are 80 cm from EUT and at least 80 from other units and other metal planes**

## EUT OPERATING CONDITIONS

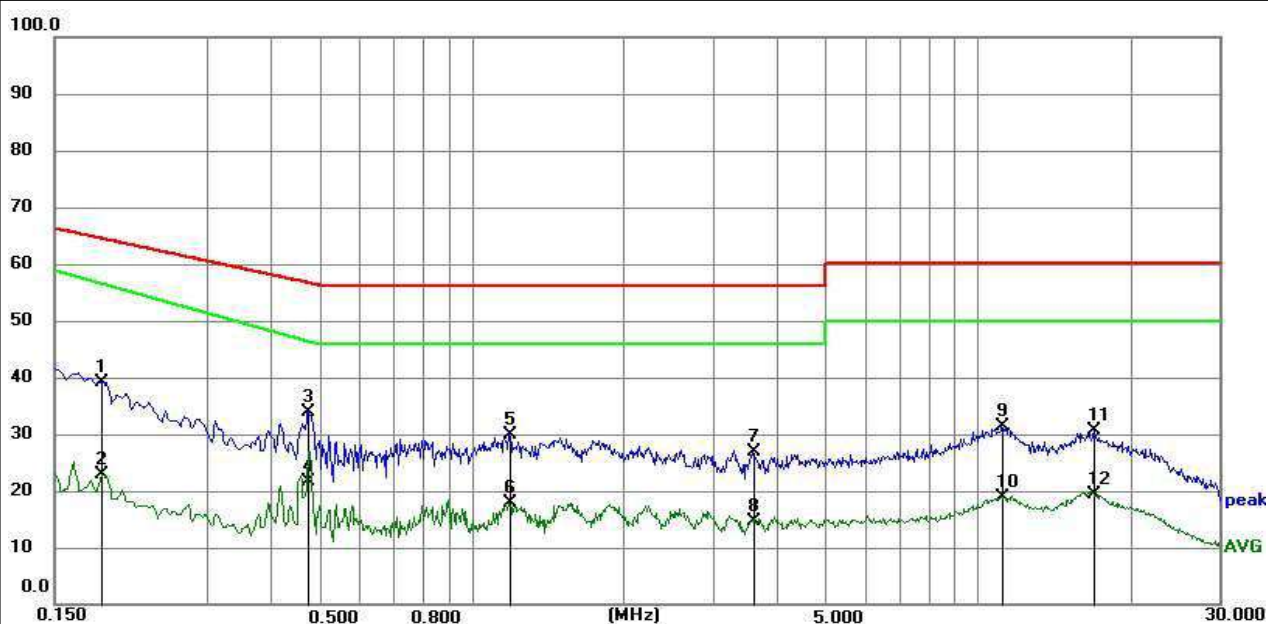
The EUT tested system was configured as the statements of 2.3 Unless otherwise a special operating condition is specified in the follows during the testing.

# TEST RESULTS

EUT :	Purple light spray comb	Model Name. :	CRY-982
Temperature :	26 °C	Relative Humidity :	54%
Pressure :	1010hPa	Test Date :	2025-05-21
Test Mode :	Running	Phase :	L
Test Voltage :	AC/DC ADAPTOR 120V To DC5V		

Remark:

Factor = Insertion Loss + Cable Loss.



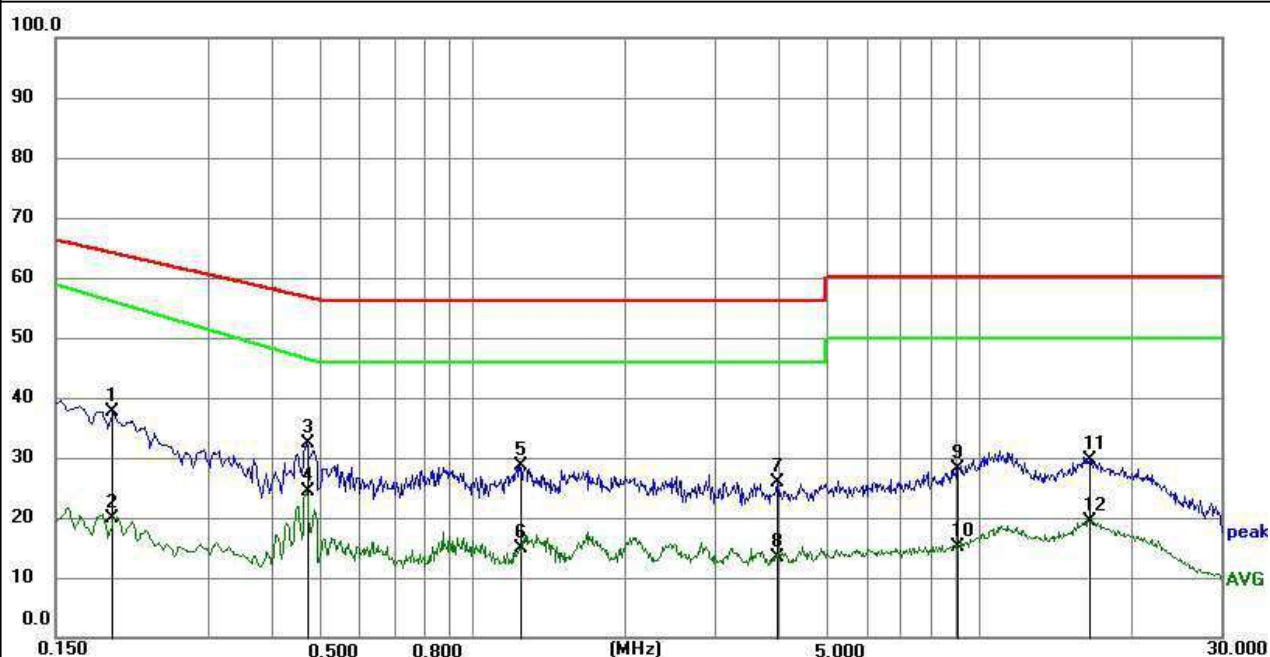
No.	Mk.	Freq. MHz	Reading Level dB	Correct Factor dB	Measure- ment dBuV	Limit dBuV	Over dB	Detector	Comment
1		0.1859	29.14	10.06	39.20	64.22	25.02	peak	
2		0.1859	12.75	10.06	22.81	56.68	33.87	AVG	
3	*	0.4739	23.94	10.01	33.95	56.45	22.50	peak	
4		0.4739	11.65	10.01	21.66	46.58	24.92	AVG	
5		1.1894	19.92	9.98	29.90	56.00	26.10	peak	
6		1.1894	7.92	9.98	17.90	46.00	28.10	AVG	
7		3.5969	16.87	9.92	26.79	56.00	29.21	peak	
8		3.5969	4.61	9.92	14.53	46.00	31.47	AVG	
9		11.1705	21.54	9.81	31.35	60.00	28.65	peak	
10		11.1705	9.16	9.81	18.97	50.00	31.03	AVG	
11		16.9755	20.62	9.89	30.51	60.00	29.49	peak	
12		16.9755	9.56	9.89	19.45	50.00	30.55	AVG	



EUT :	Purple light spray comb	Model Name. :	CRY-982
Temperature :	26 °C	Relative Humidity :	54%
Pressure :	1010hPa	Test Date :	2025-05-21
Test Mode :	Running	Phase :	N
Test Voltage :	AC/DC ADAPTOR 120V To DC5V		

Remark:

Factor = Insertion Loss + Cable Loss.



No.	Mk.	Freq.	Reading Level	Correct Factor	Measurement	Limit	Over		
		MHz		dB	dBuV	dBuV	dB	Detector	Comment
1		0.1949	27.59	10.05	37.64	63.83	26.19	peak	
2		0.1949	9.74	10.05	19.79	56.17	36.38	AVG	
3		0.4695	22.43	10.01	32.44	56.52	24.08	peak	
4	*	0.4695	14.45	10.01	24.46	46.68	22.22	AVG	
5		1.2389	18.70	9.98	28.68	56.00	27.32	peak	
6		1.2389	5.00	9.98	14.98	46.00	31.02	AVG	
7		3.9975	15.92	9.91	25.83	56.00	30.17	peak	
8		3.9975	3.39	9.91	13.30	46.00	32.70	AVG	
9		9.0375	18.36	9.82	28.18	60.00	31.82	peak	
10		9.0375	5.23	9.82	15.05	50.00	34.95	AVG	
11		16.5390	19.69	9.88	29.57	60.00	30.43	peak	
12		16.5390	9.51	9.88	19.39	50.00	30.61	AVG	

## RADIATED EMISSION MEASUREMENT

### LIMITS OF RADIATED EMISSION MEASUREMENT

FREQUENCY (MHz)	Class A (at 10m)	Class B (at 3m)
	dBuV/m	dBuV/m
30 ~ 88	39.0	40.0
88 ~ 216	43.5	43.5
216 ~ 960	46.5	46.0
Above 960	49.5	54.0

#### Notes:

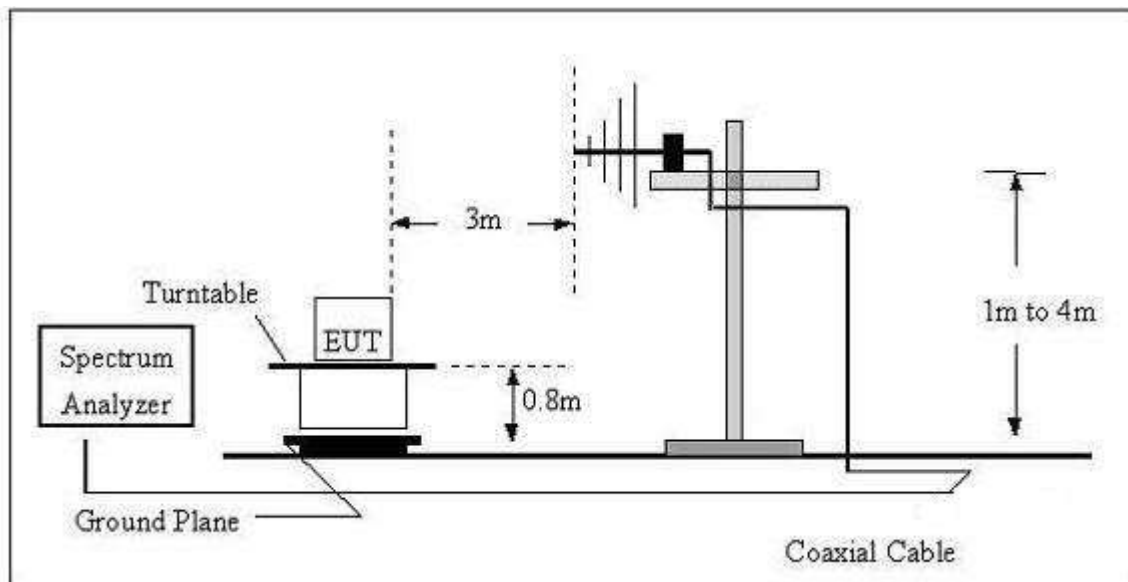
- (1) The limit for radiated test was performed according to as following:  
FCC PART 15B /ICES-003.
- (2) The tighter limit applies at the band edges.
- (3) Emission level (dBuV/m)=20log Emission level (uV/m).

### TEST PROCEDURE

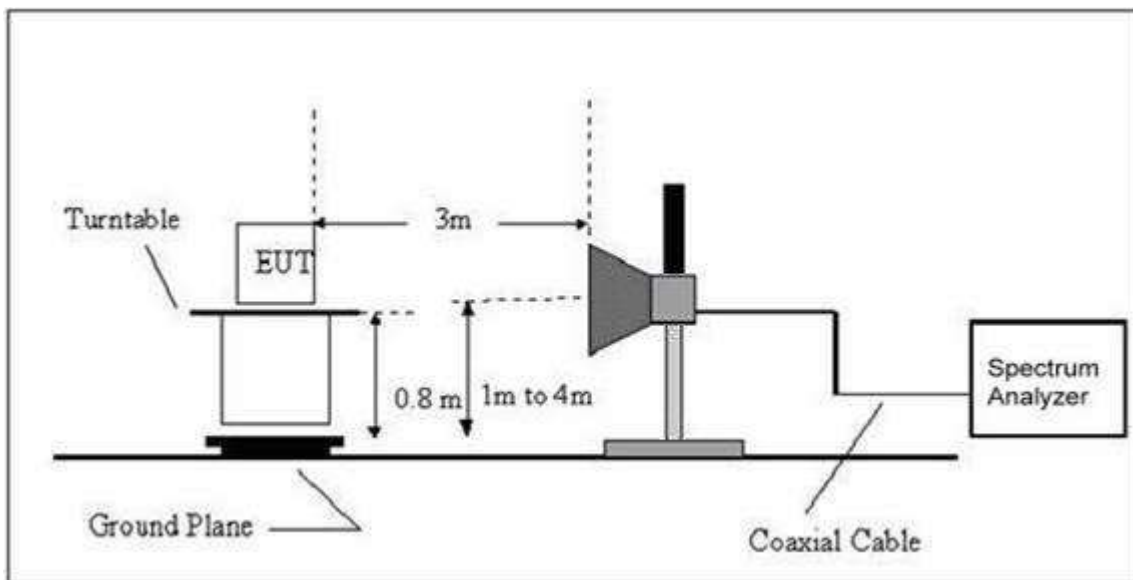
- a. The measuring distance of at 10 m shall be used for measurements at frequency up to 1GHz. For frequencies above 1GHz, any suitable measuring distance may be used.
- b. The EUT was placed on the top of a rotating table 0.8 meters above the ground at a 10 meter open area test site. The table was rotated 360 degrees to determine the position of the highest radiation.
- c. The height of the equipment or of the substitution antenna shall be 0.8 m; the height of the test antenna shall vary between 1 m to 4 m. Both horizontal and vertical polarizations of the antenna are set to make the measurement.
- d. The initial step in collecting conducted emission data is a spectrum analyzer peak detector mode pre-scanning the measurement frequency range. Significant peaks are then marked and then Quasi Peak detector mode re-measured, above 1G Average detector mode will be instead.
- e. If the Peak Mode measured value compliance with and lower than Quasi Peak Mode Limit, the EUT shall be deemed to meet QP(AV) Limits and then no additional QP Mode measurement performed.
- f. For the actual test configuration, please refer to the related Item –EUT Test Photos.

## TEST SETUP

### (A) Radiated Emission Test Set-Up Frequency Below 1 GHz



### (B) Radiated Emission Test Set-Up Frequency Above 1GHz



## EUT OPERATING CONDITIONS

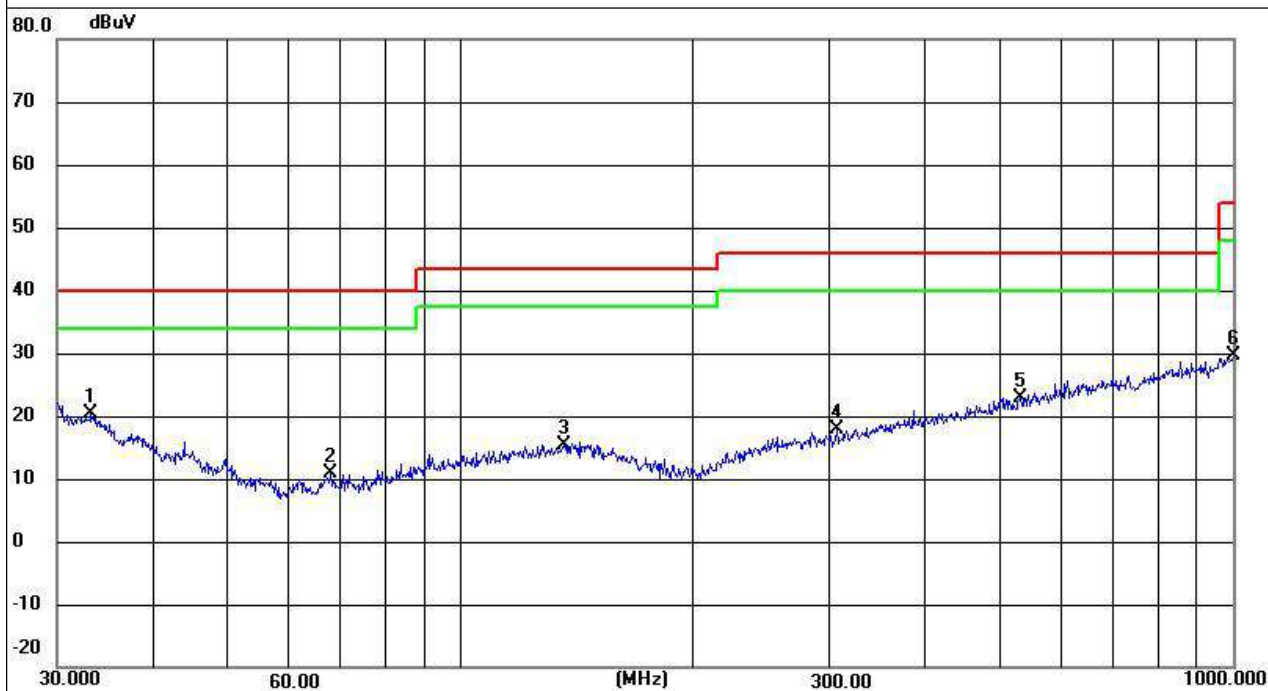
The EUT tested system was configured as the statements of **2.3** Unless otherwise a special operating condition is specified in the follows during the testing.

## TEST RESULTS

EUT :	Purple light spray comb	Model Name. :	CRY-982
Temperature :	24 °C	Relative Humidity :	54%
Pressure :	1010 hPa	Test Date :	2025-05-21
Test Mode :	Running	Polarization :	Horizontal
Test Power :	DC 5V		

### Remark:

1. All readings are Quasi-Peak and Average values.
2. Factor = Antenna Factor + Cable Loss.
3. N/A means All Data have pass Limit

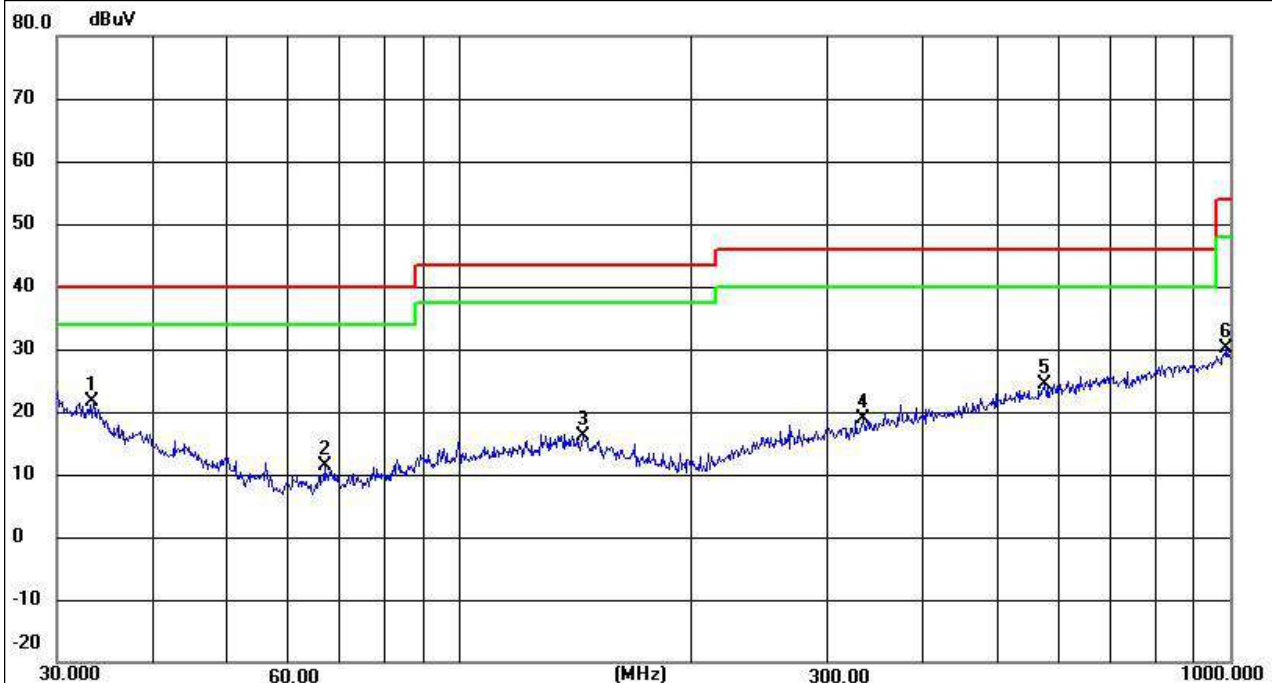


No.	Frequency (MHz)	Reading (dBuV)	Factor (dB)	Level (dBuV)	Limit (dBuV)	Margin (dB)	Detector	Height (cm)	Azimuth (deg.)	P/F	Remark
1 *	33.2112	29.66	-9.34	20.32	40.00	-19.68	peak	100	0	P	
2	67.9129	30.97	-20.14	10.83	40.00	-29.17	peak	100	0	P	
3	135.9822	47.64	-32.15	15.49	43.50	-28.01	peak	100	0	P	
4	306.7537	49.71	-31.88	17.83	46.00	-28.17	peak	100	0	P	
5	530.1014	54.16	-31.25	22.91	46.00	-23.09	peak	100	0	P	
6	1000.0000	60.19	-30.60	29.59	54.00	-24.41	peak	100	0	P	

EUT :	Purple light spray comb	Model Name. :	CRY-982
Temperature :	26 °C	Relative Humidity :	54%
Pressure :	1010hPa	Test Date :	2025-05-21
Test Mode :	Running	Phase :	Vertical
Test Power :	DC 5V		

Remark:

1. All readings are Quasi-Peak and Average values.
2. Factor = Antenna Factor + Cable Loss.
3. N/A means All Data have pass Limit



No.	Frequency (MHz)	Reading (dBuV)	Factor (dB)	Level (dBuV)	Limit (dBuV)	Margin (dB)	Detector	Height (cm)	Azimuth (deg.)	P/F	Remark
1 *	33.4449	31.07	-9.50	21.57	40.00	-18.43	peak	100	360	P	
2	66.7325	31.78	-20.41	11.37	40.00	-28.63	peak	100	360	P	
3	144.3348	48.35	-32.13	16.22	43.50	-27.28	peak	100	360	P	
4	333.6867	50.73	-31.80	18.93	46.00	-27.07	peak	100	360	P	
5	574.6258	55.67	-31.18	24.49	46.00	-21.51	peak	100	360	P	
6	989.5355	60.72	-30.61	30.11	54.00	-23.89	peak	100	360	P	



## LABELING REQUIREMENTS

(a) In addition to the requirements in part 2 of this chapter, a device subject to certification, or Supplier's Declaration of Conformity shall be labeled as follows:

(1) Receivers associated with the operation of a licensed radio service, e.g., FM broadcast under part 73 of this chapter, land mobile operation under part 90 of this chapter, etc., shall bear the following statement in a conspicuous location on the device:

**This device complies with part 15 of the FCC Rules. Operation is subject to the condition that this device does not cause harmful interference.**

(2) A stand-alone cable input selector switch, shall bear the following statement in a conspicuous location on the device:

**This device complies with part 15 of the FCC Rules for use with cable television service.**

(3) All other devices shall bear the following statement in a conspicuous location on the device:

**This device complies with part 15 of the FCC Rules. Operation is subject to the following two conditions: (1) This device may not cause harmful interference, and (2) this device must accept any interference received, including interference that may cause undesired operation.**

(4) Where a device is constructed in two or more sections connected by wires and marketed together, the statement specified under paragraph (a) of this section is required to be affixed only to the main control unit.

(5) When the device is so small or for such use that it is impracticable to label it with the statement specified under paragraph (a) of this section in a font that is four-point or larger, and the device does not have a display that can show electronic labeling, then the information required by this paragraph shall be placed in the user manual and must also either be placed on the device packaging or on a removable label attached to the device.

(b)-(c) [Reserved]

(d) Consumer electronics TV receiving devices, including TV receivers, videocassette recorders, and similar devices, that incorporate features intended to be used with cable television service, but do not fully comply with the technical standards for cable ready equipment set forth in §15.118, shall not be marketed with terminology that describes the device as "cable ready" or "cable compatible," or that otherwise conveys the impression that the device is fully compatible with cable service. Factual statements about the various features of a device that are intended for use with cable service or the quality of such features are acceptable so long as such statements do not imply that the device is fully compatible with cable service. Statements relating to product features are generally acceptable where they are limited to one or more specific features of a device, rather than the device as a whole. This requirement applies to consumer TV receivers, videocassette recorders and similar devices manufactured or imported for sale in this country on or after October 31, 1994.



**This device complies with part 15 of the FCC Rules for use with cable television service.**

**This device complies with part 15 of the FCC Rules. Operation is subject to the following two conditions: (1) This device may not cause harmful interference, and (2) this device must accept any interference received, including interference that may cause undesired operation.**

EUT TEST PHOTO

RE



CE



EUT



Fig.1



Fig.2





Fig.3

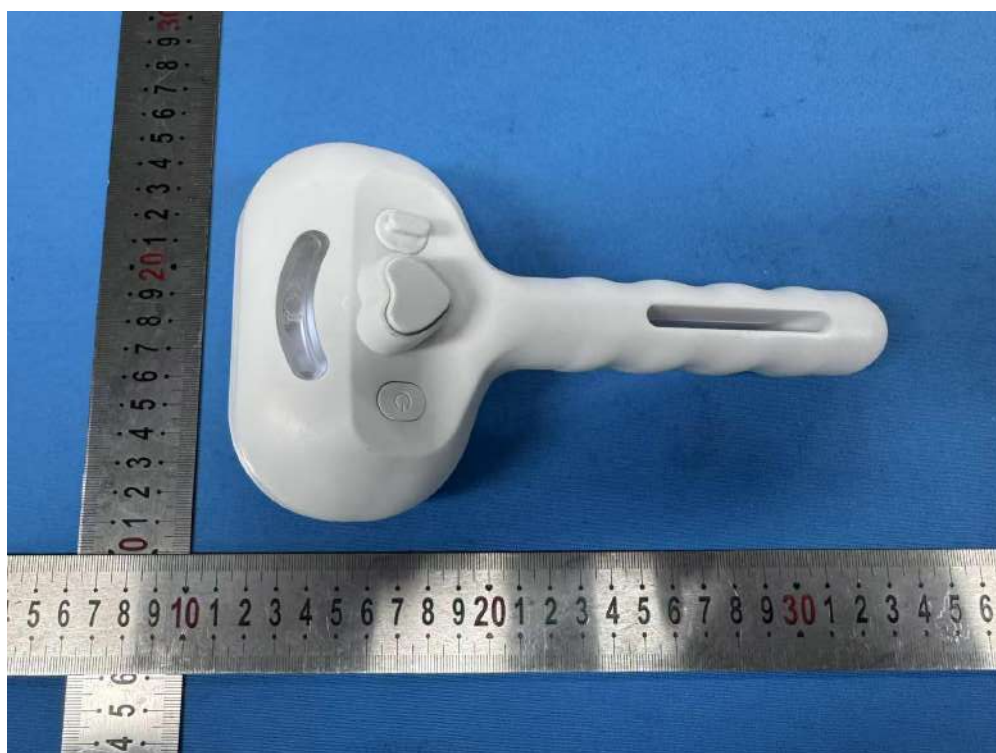


Fig.4



Fig.5



Fig.6





Fig.7

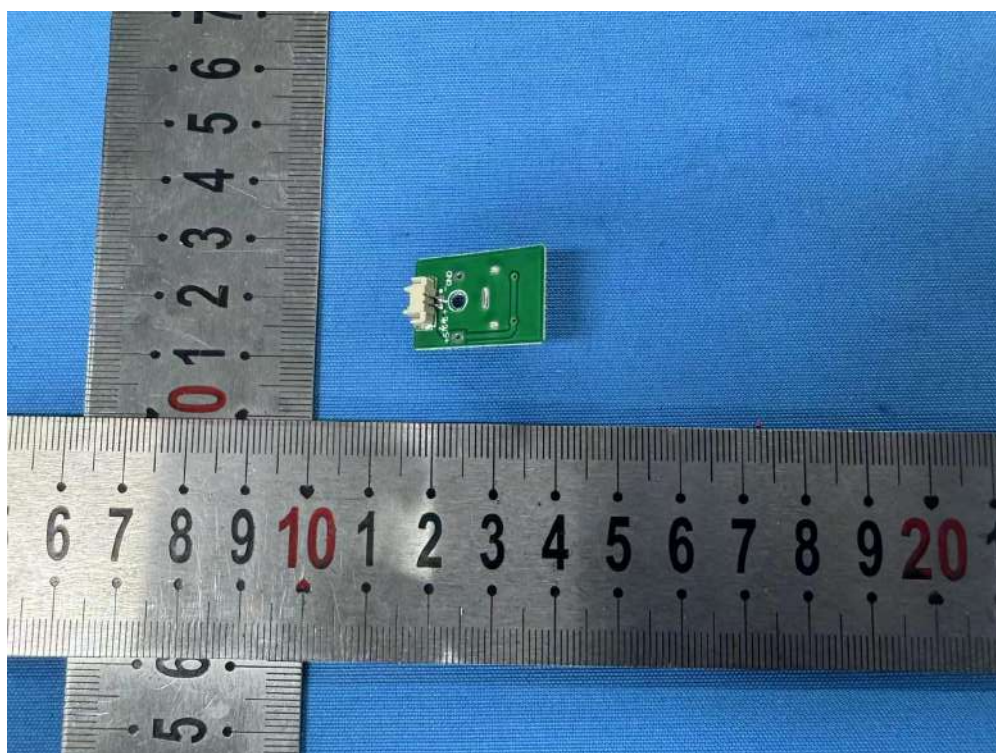


Fig.8

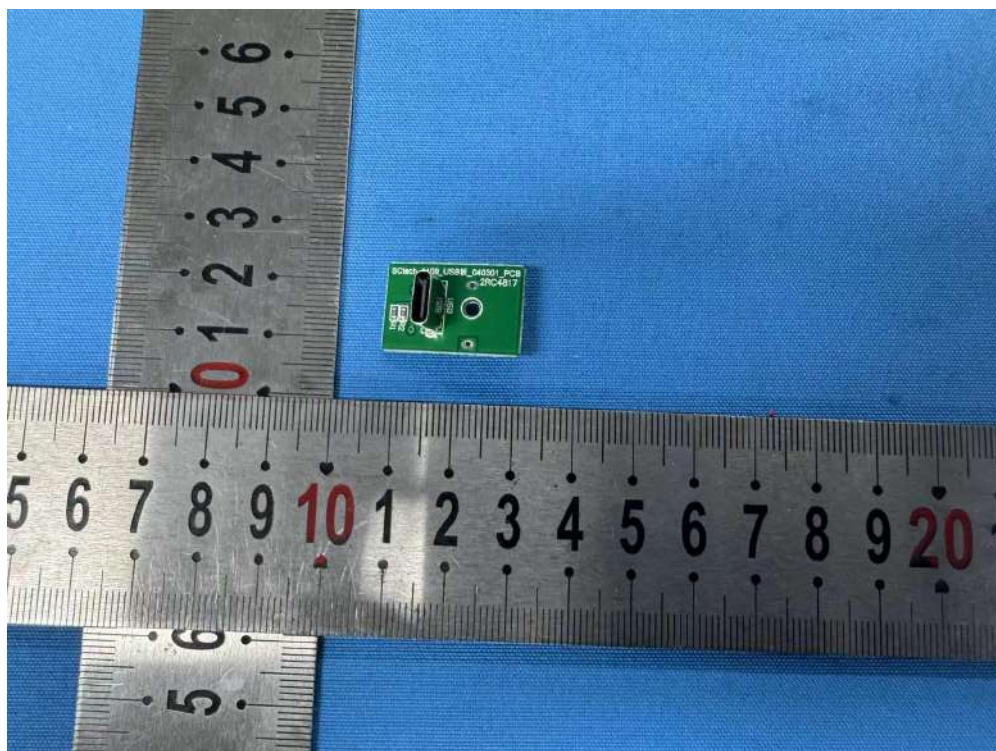


Fig.9

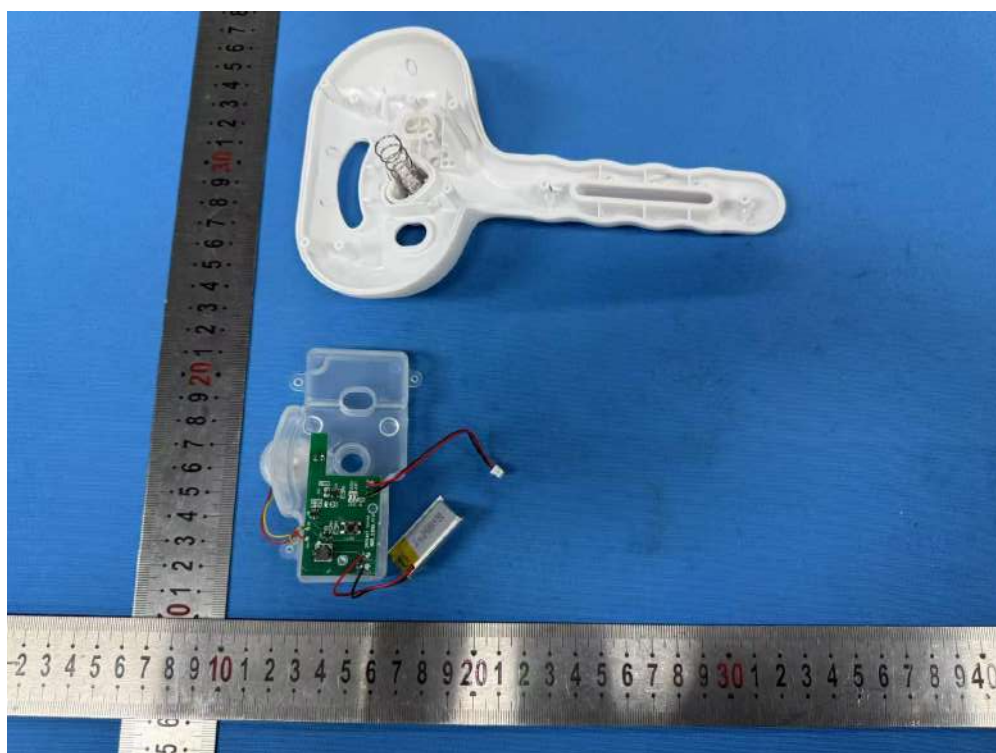


Fig.10



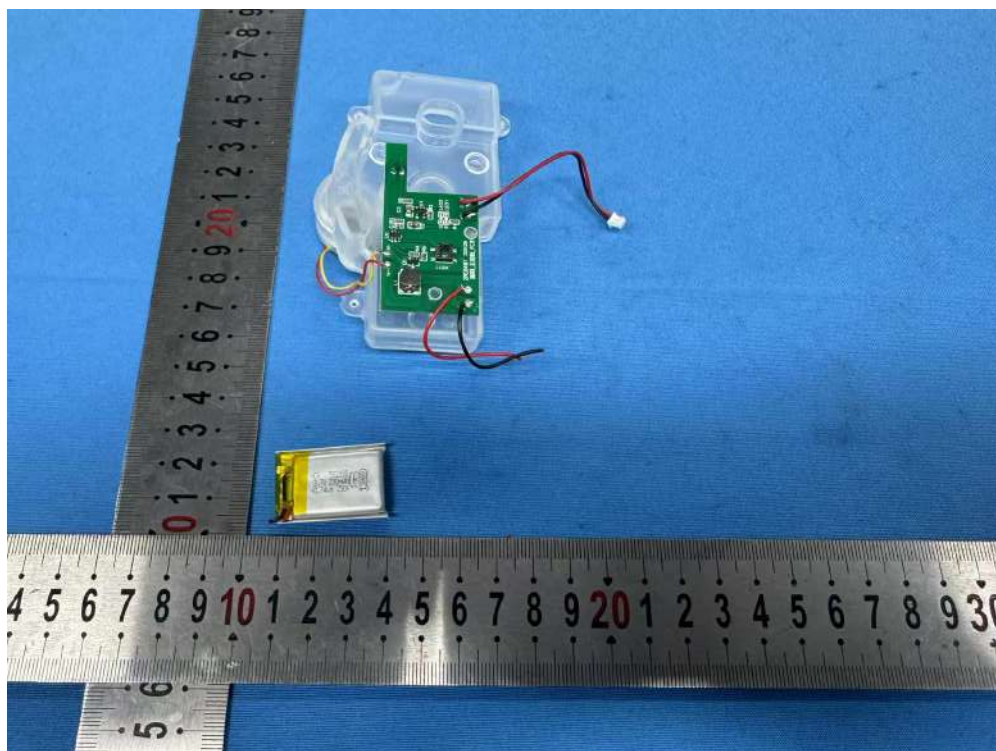


Fig.11



Fig.12

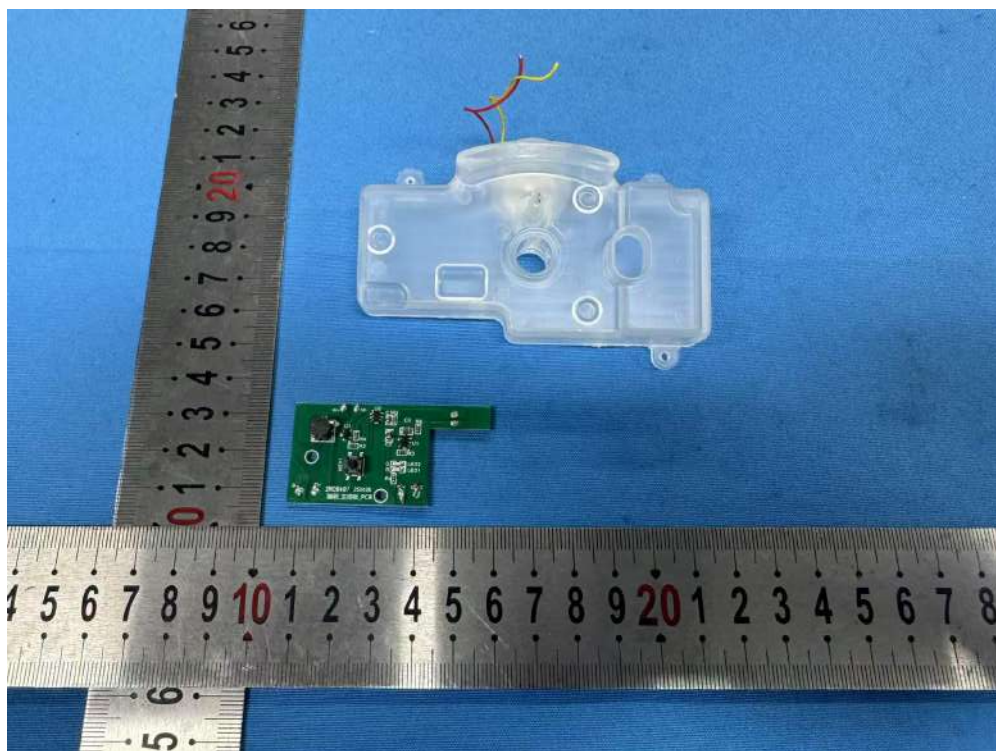


Fig.13



Fig.14



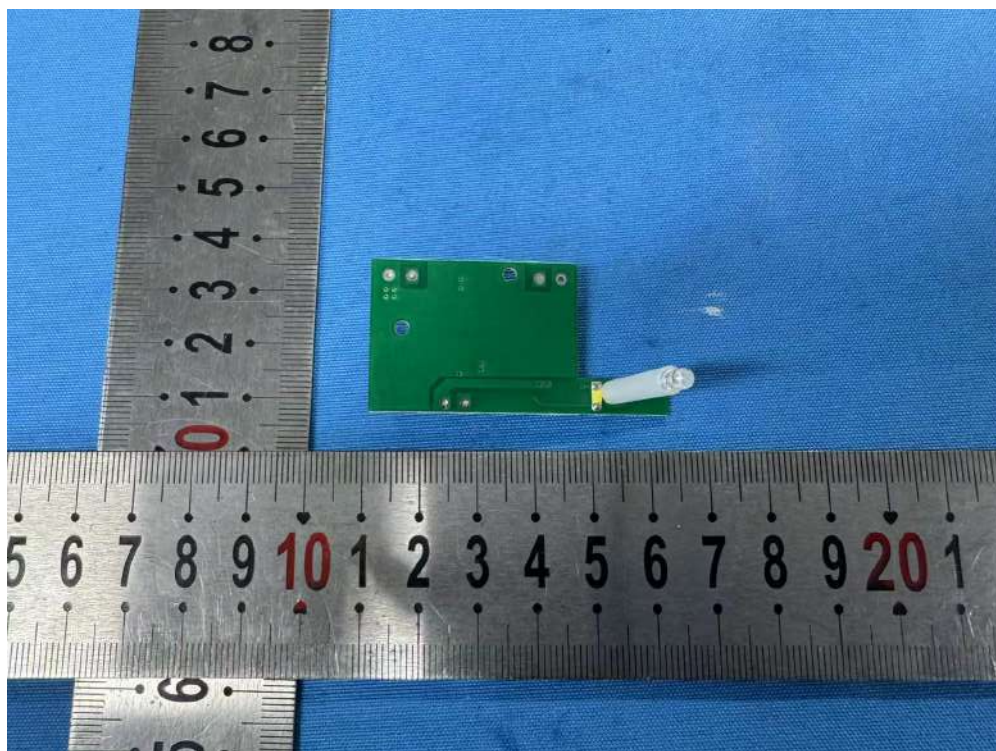


Fig.15

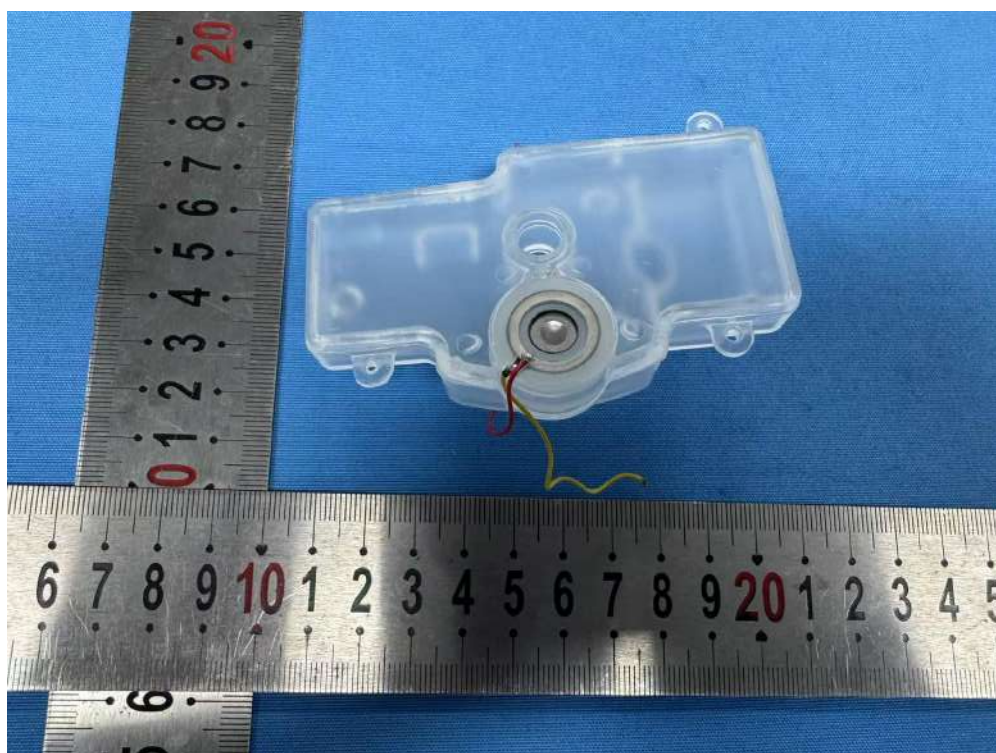


Fig.16

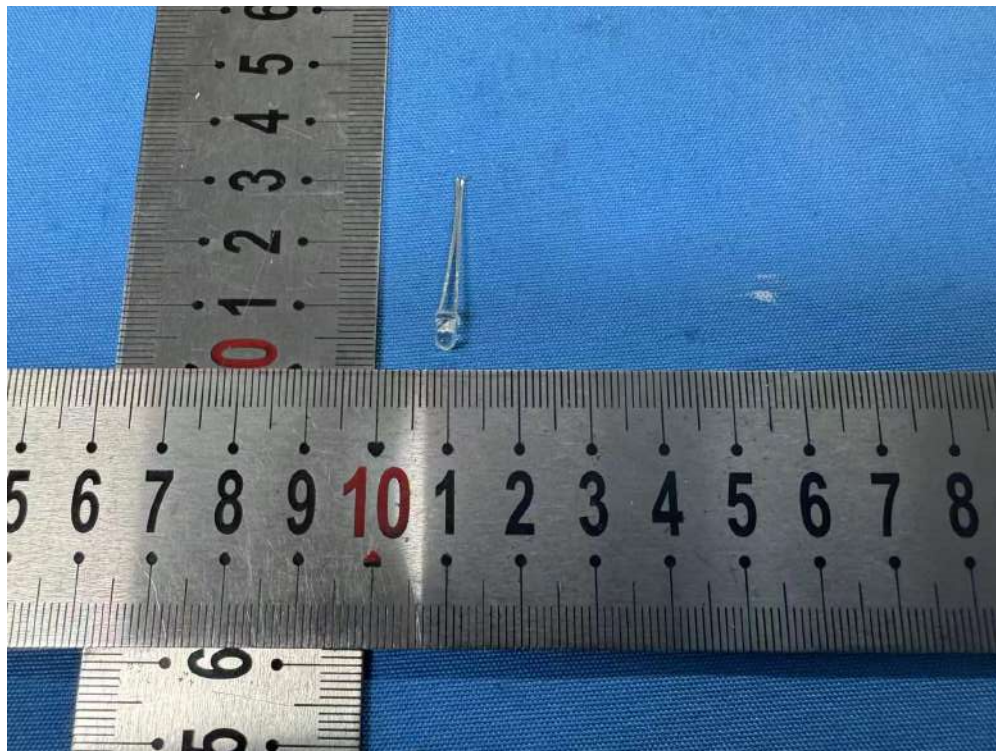


Fig.17

\*\*\*\*\*THE END\*\*\*\*\*





**Dongguan Anhua Testing Technology Co., Ltd.**

## **CERTIFICATE OF ROHS COMPLIANCE**

According to Directive: **2011/65/EU,2015/863EU,2017/2102EU**

Ref. No.:AH2025051602

Product: Purple light spray comb  
Trade Name: N/A  
Applicant: Ruian Feiyue Craft Gift Factory  
Address: No. 9, Lane 7, Linyang Street, Linbei Village, Nanbin Street, Rui'an City, Wenzhou City, Zhejiang Province  
Manufacturer: Ruian Feiyue Craft Gift Factory  
Address: No. 9, Lane 7, Linyang Street, Linbei Village, Nanbin Street, Rui'an City, Wenzhou City, Zhejiang Province  
Model: CRY-982

The test sample of product has been passed, the test according to requirements of the following standards:

Standard(s):

IEC 62321-3-1:2013;  
IEC 62321-4:2013+A1:2017;  
IEC 62321-5:2013;  
IEC 62321-6:2015;  
IEC 62321-7-1:2015 ;  
IEC 62321-7-2:2017;  
IEC 62321-8:2017;

Test report(s) No.:

AH20250516C02

The Certificate of Compliance is based on a test procedure or an evaluation of the above-mentioned product. This is to Certify that the above-mentioned Product is in compliance with the ROHS 2.0 Directive -2011/65/EU Annex II(EU)2015/863 as last amended by Directive(EU)2017/2102.



Approved by:

Date :



**Dongguan Anhua Testing Technology Co., Ltd.**

Address: Room 401, Building 1, No. 35, Liaobu Jinyuan Road, Liaobu, Dongguan, Guangdong, China

Tel: 0769-86057700

Fax: 0769-86057700

www.anhua-lab.com

# ROHS TEST REPORT

## IEC 62321

Equipment under Test : Purple light spray comb

Model /Type : CRY-982

Listed Models : N/A

**Applicant** : Ruian Feiyue Craft Gift Factory

Address : No. 9, Lane 7, Linyang Street, Linbei Village, Nanbin Street, Rui'an City, Wenzhou City, Zhejiang Province

**Manufacturer** : Ruian Feiyue Craft Gift Factory

Address : No. 9, Lane 7, Linyang Street, Linbei Village, Nanbin Street, Rui'an City, Wenzhou City, Zhejiang Province

**Laboratory** : **Dongguan Anhua Testing Technology Co., Ltd.**

Address : Room 401, Building 1, No. 35, Liaobu Jinyuan Road, Liaobu, Dongguan, Guangdong, China

Tel : 0769-86057700

Fax : 0769-86057700

Website : [www.anhua-lab.com](http://www.anhua-lab.com)

The test report merely corresponds to the test sample. It is not permitted to copy extracts of these test result without the written permission of the test laboratory.

<b>Test Result:</b>	<b>PASS</b>
---------------------	-------------

TEST REPORT

**Applicant's name**..... Ruian Feiyue Craft Gift Factory

**Address**..... No. 9, Lane 7, Linyang Street, Linbei Village, Nanbin Street, Rui'an City,  
Wenzhou City, Zhejiang Province

Report on the submitted sample said to be

**Sample name**..... Purple light spray comb

**Model /Type** ..... CRY-982

**Date of Issue**..... May. 23, 2025

**Test Result:**

**Conclusion:**

1) As specified by client, to determine the Lead(Pb), Cadmium(Cd), Mercury(Hg), Hexavalent Chromium(Cr6+), Polybrominated Biphenyls(PBBs) & Polybrominated Diphenyl Ethers(PBDEs) content in the submitted sample in accordance with Directive 2011/65/EU (RoHS) and its amendment Annex II directive 2015/863/EU as last amended by Directive(EU)2017/2102.

**PASS**

2) As specified by client, to determine HBCDD content in the submitted samples in accordance with ROHS.

**PASS**

3) As specified by client, to determine the DEHP 、DBP 、BBP content in the submitted sample in accordance PASS with Regulation (EU) No 552/2009.

**PASS**

4) As specified by client, to determine the Beryllium content in the submitted sample. /

Tested

by:

*Shichang Liu*

Shichang Liu

Project

Leader

Reviewed

by:

*Baofeng Ma*

Baofeng Ma

Laboratory

Supervisor

Approved

by:

Tested by:





<b>Table of Contents</b>	<b>Page</b>
<b>1. Test Method</b>	<b>4</b>
<b>2. Test Flow</b>	<b>4</b>
<b>3. Test Results</b>	<b>7</b>
<b>2.1 CONSOLIDATED TEST REPORT</b>	<b>7</b>
<b>2.2 Photo of the Submitted Sample</b>	<b>12</b>

## 1. Test Method:

(1): With reference to EN 50581:2012/IEC 62321 Electrotechnical products - Determination of levels of ten regulated substances

Test Item	Pretreatment Method	Measuring Instrument	MDL
Lead(Pb)	IEC 62321-3-1-2013	ED-XRF	2 mg/kg
Cadmium(Cd)	IEC 62321-3-1-2013	ED-XRF	2 mg/kg
Mercury(Hg)	IEC 62321-3-1-2013	ED-XRF	2 mg/kg
Chromium(Cr)	IEC 62321-3-1-2013	ED-XRF	2 mg/kg
Bromine(Br)	IEC 62321-3-1-2013	ED-XRF	2 mg/kg
Lead(Pb)	IEC 62321-5-2013	ICP-OES	2 mg/kg
Cadmium(Cd)	IEC 62321-5-2013	ICP-OES	2 mg/kg
Mercury(Hg)	IEC 62321-4:2013+A1:2017	ICP-OES	2 mg/kg
Hexavalent Chromium	IEC 62321-7-1:2015 IEC 62321-7-2:2017	HUV-VIS	2 mg/kg
Polybrominated Biphenyl Ethers	IEC 62321-6:2015	GC-MS	5 mg/kg
Phthalates test method	IEC 62321-8:2017	GC-MS	5 mg/kg

2), (3):

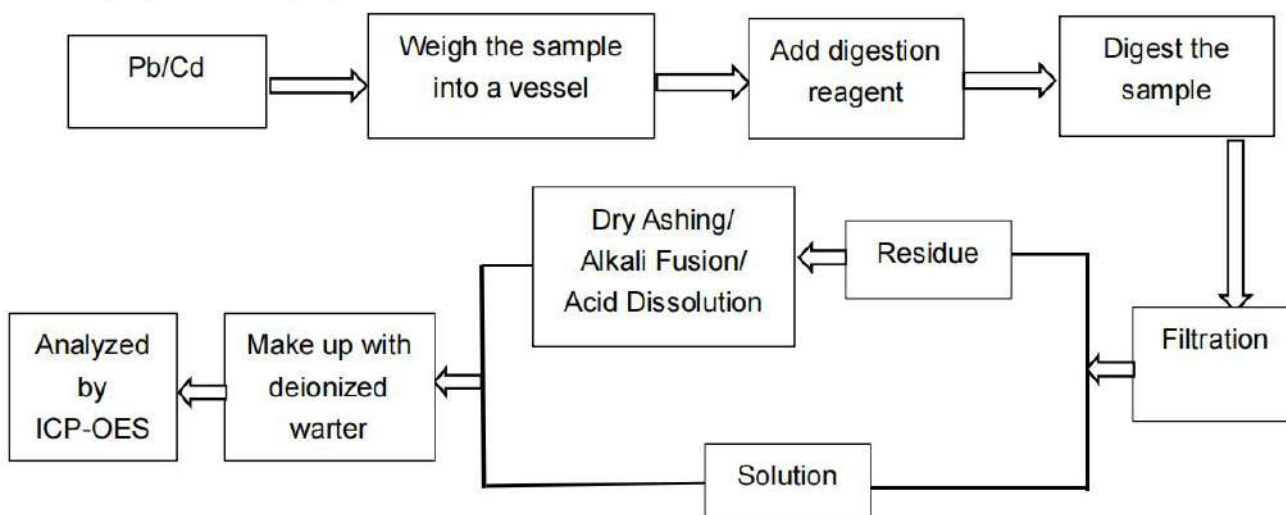
Test Item	Pretreatment Method	Measuring Instrument	MDL
HBCDD	US EPA 3540C:1996	GC-MS	10 mg/kg
DEHP,DBP,BBP	EN 14372:2004	GC-MS	30 mg/kg

(4)

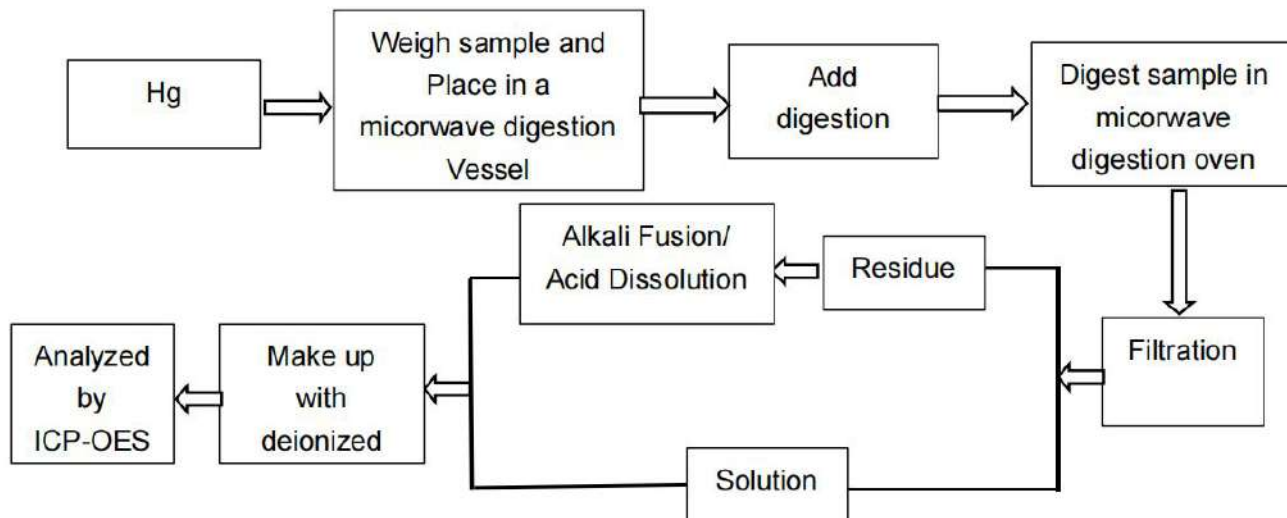
Test Item	Pretreatment Method	Measuring Instrument	MDL
Beryllium(Be)	US EPA 3052:1996, US EPA 6010C:2007	ICP-OES	10 mg/kg

## 2. Test Flow:

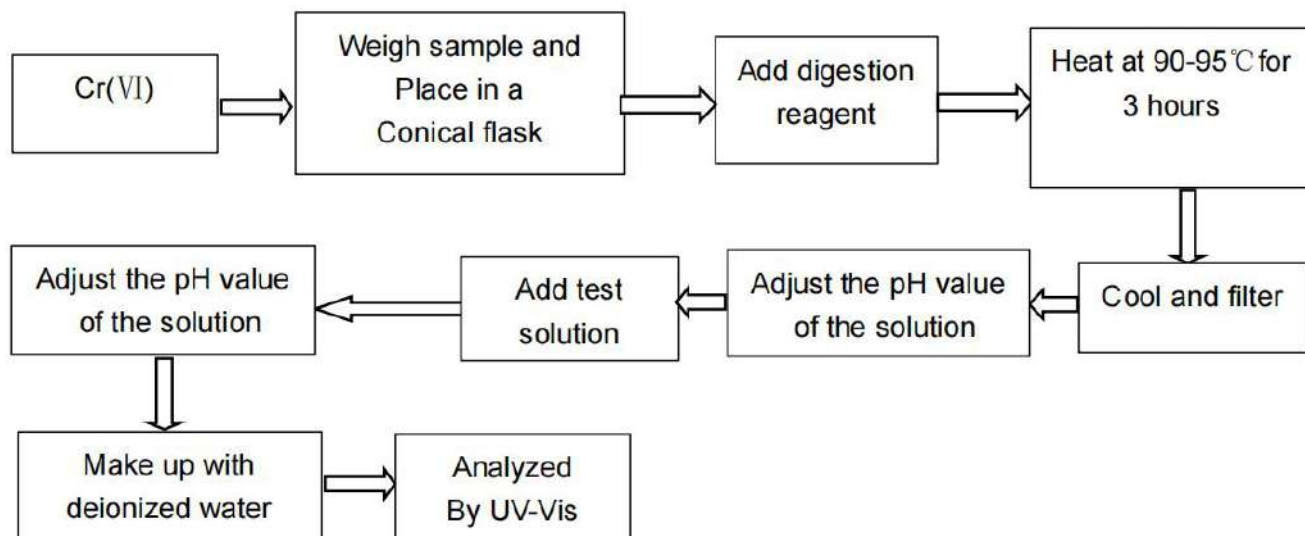
### 1. Lead(Pb), Cadmium(Cd)



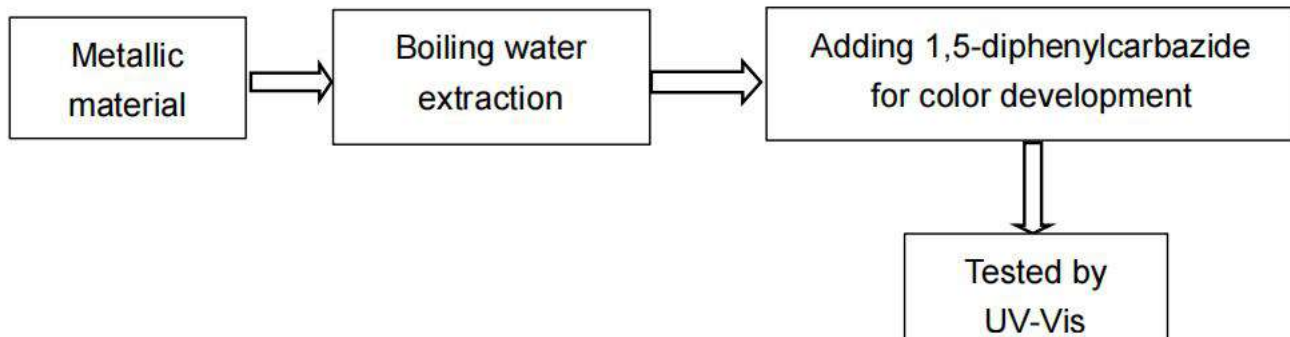
## 2. Mercury (Hg)



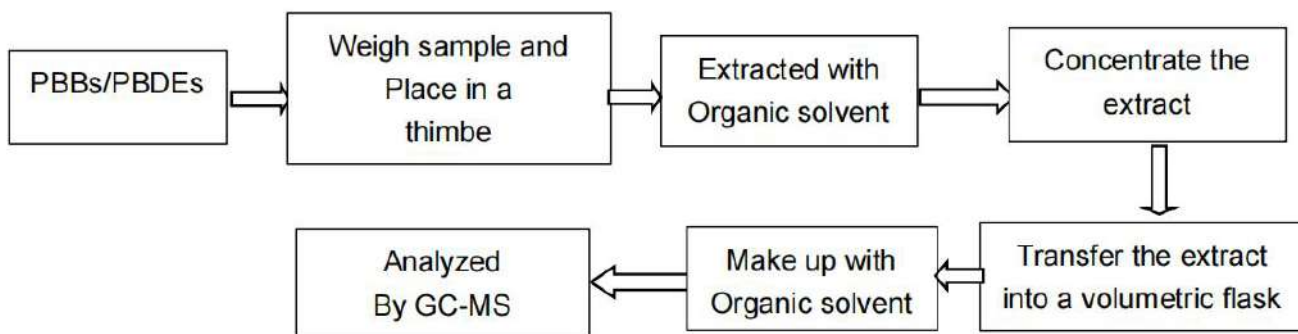
## 3. Hexavalent Chromium(Cr VI) (Alkaline extraction)



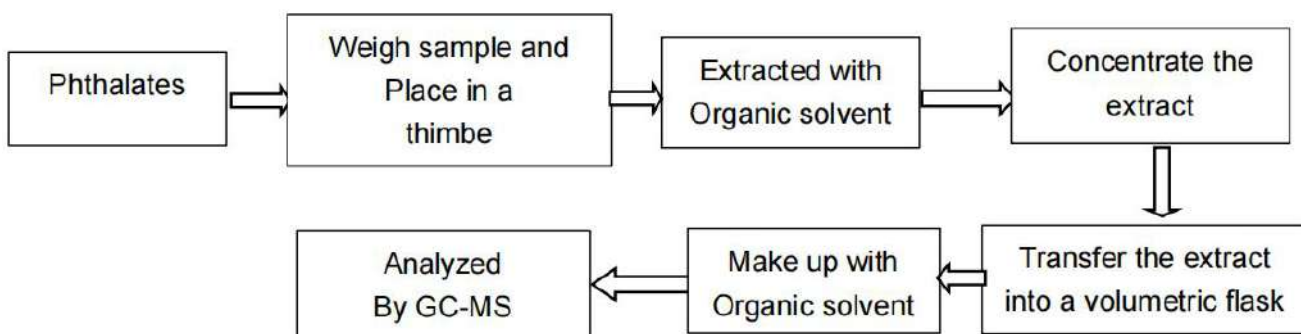
#### 4. Hexavalent Chromium(Cr VI) (Boiling water extraction)



#### 5. PBBs/ PBDEs



#### 6. DEHP/ BBP/ DBP/ DIBP





### 3. Test Results

#### CONSOLIDATED TEST REPORT

Part No.	Sample Description	Test item	XRF Result	Chemical Test (mg/kg)	Conclusion
1	Plastic casing	Pb	BL	--	Pass
		Cd	BL	--	
		Hg	BL	--	
		Cr(Cr(VI))	BL	--	
		PBBs	BL	--	
		PBDEs		--	
		DEHP	--	ND	
		DBP	--	ND	
		BBP	--	ND	
		DIBP	--	ND	
2	Line	Pb	BL	--	Pass
		Cd	BL	--	
		Hg	BL	--	
		Cr(Cr(VI))	BL	--	
		PBBs	BL	--	
		PBDEs		--	
		DEHP	--	ND	
		DBP	--	ND	
		BBP	--	ND	
		DIBP	--	ND	
3	Switch	Pb	BL	--	Pass
		Cd	BL	--	
		Hg	BL	--	
		Cr(Cr(VI))	BL	--	
		PBBs	BL	--	
		PBDEs		--	
		DEHP	--	ND	
		DBP	--	ND	
		BBP	--	ND	
		DIBP	--	ND	
4	PCBA	Pb	BL	--	Pass
		Cd	BL	--	
		Hg	BL	--	
		Cr(Cr(VI))	BL	--	



		PBBs	BL	--	
		PBDEs		--	
		DEHP	--	ND	
		DBP	--	ND	
		BBP	--	ND	
		DIBP	--	ND	
5	Battery	Pb	BL	--	Pass
		Cd	BL	--	
		Hg	BL	--	
		Cr(Cr(VI))	BL	--	
		PBBs	BL	--	
		PBDEs		--	
		DEHP	--	ND	
		DBP	--	ND	
		BBP	--	ND	
		DIBP	--	ND	
6	Atomizer plate	Pb	BL	--	Pass
		Cd	BL	--	
		Hg	BL	--	
		Cr(Cr(VI))	BL	--	
		PBBs	BL	--	
		PBDEs		--	
		DEHP	--	ND	
		DBP	--	ND	
		BBP	--	ND	
		DIBP	--	ND	
7	Screw	Pb	BL	--	Pass
		Cd	BL	--	
		Hg	BL	--	
		Cr(Cr(VI))	BL	--	
		PBBs	BL	--	
		PBDEs		--	
		DEHP	--	ND	
		DBP	--	ND	
		BBP	--	ND	
		DIBP	--	ND	

**Remark:**

1.

(a) It is the result on total Br while test item on restricted substances is PBBs/PBDEs. It is the result on total Cr while test item on restricted substances is  $\text{Cr}^{6+}$ .

(b) Results are obtained by XRF for primary screening, and further chemical testing by.

(c) ICP-OES (for Cd, Pb, Hg), UV-Vis (for  $\text{Cr}(\text{VI})$ ) and GC-MS (for PBBs, PBDEs) is recommended to be performed, if the concentration exceeds the below warning value according to IEC 62321-3-1:2013 (unit: mg/kg).

Element	Polymers	Metals	Composite Material
Cd	$\text{BL} \leq (70-3\sigma) < X < (130+3\sigma) \leq \text{OL}$	$\text{BL} \leq (70-3\sigma) < X < (130+3\sigma) \leq \text{OL}$	$\text{LOD} < X < (150+3\sigma) \leq \text{OL}$
Pb	$\text{BL} \leq (700-3\sigma) < X < (1300+3\sigma) \leq \text{OL}$	$\text{BL} \leq (700-3\sigma) < X < (1300+3\sigma) \leq \text{OL}$	$\text{BL} \leq (500-3\sigma) < X < (1500+3\sigma) \leq \text{OL}$
Hg	$\text{BL} \leq (700-3\sigma) < X < (1300+3\sigma) \leq \text{OL}$	$\text{BL} \leq (700-3\sigma) < X < (1300+3\sigma) \leq \text{OL}$	$\text{BL} \leq (500-3\sigma) < X < (1500+3\sigma) \leq \text{OL}$
Cr	$\text{BL} \leq (700-3\sigma) < X$	$\text{BL} \leq (700-3\sigma) < X$	$\text{BL} \leq (500-3\sigma) < X$
Br	$\text{BL} \leq (300-3\sigma) < X$	NA	$\text{BL} \leq (250-3\sigma) < X$

(d) OL=Over Limit, BL=Below Limit, X=inconclusive, LOD=Limit of Detection, NA=not applicable, -- = No Testing.

(e) The XRF screening test for RoHS elements-The reading may be different to the actual content in the sample be of non-uniformity composition.

2.

(a) mg/kg=ppm=0.0001%, N.D.=not detected ( $< \text{MDL}$ ).

(b) Unit and Method Detection Limit(MDL) in wet chemical test.

Test Items	Unit	MDL	Limit
Pb	mg/kg	2	1000
Cd	mg/kg	2	100
Hg	mg/kg	2	1000
DBP	mg/kg	30	1000
BBP	mg/kg	30	1000
DEHP	mg/kg	30	1000
DIBP	mg/kg	30	1000

The MDL for single compound of PBBs & PBDEs is 20mg/kg, MDL of  $\text{Cr}^{6+}$  for metal sample is 0.10  $\mu\text{g}/\text{cm}^2$ . and MDL of  $\text{Cr}^{6+}$  for polymer & composite sample is 8 mg/kg.

(c) Metal sample:

-The sample is positive for  $\text{Cr}^{6+}$  if the  $\text{Cr}^{6+}$  concentration is greater than 0.13  $\mu\text{g}/\text{cm}^2$ . The sample coating is considered to contain  $\text{Cr}^{6+}$ .

-The sample is negative for  $\text{Cr}^{6+}$  if  $\text{Cr}^{6+}$  is ND (concentration less than 0.10  $\mu\text{g}/\text{cm}^2$ ). The coating is considered

**Dongguan Anhua Testing Technology Co., Ltd.**

Address: Room 401, Building 1, No. 35, Liaobu Jinyuan Road, Liaobu, Dongguan, Guangdong, China  
Tel: 0769-86057700 Fax: 0769-86057700 www.anhua-lab.com

a non- Cr<sup>6+</sup> based coating.

-The result between 0.10 µg/cm<sup>2</sup> and 0.13 µg/cm<sup>2</sup> is considered to be inconclusive, unavoidable coating variations may influence the determination.

Information on storage conditions and production date of the tested sample is unavailable and thus Cr<sup>6+</sup> results represent status of the sample at the time of testing.

3.

As specified by client to test the specified materials only.

4.

\*=According to the declaration from the client, Lead (Pb) in the sample are exempted by EU RoHS Directive 2011/65/EU based on ANNEX III 6(c): Copper alloy containing no more than 4% lead by weight.

5.

#=According to the declaration from the client, Lead (Pb) in the sample are exempted by EU RoHS Directive 2011/65/EU based on ANNEX III 7(c)-I, Electrical and electronic components containing lead in a glass or ceramic other than dielectric ceramic in capacitors.

6.

The result(s) shown is/are of the total weight of wet sample

Photo of the Submitted Sample



Fig.1



Fig.2



Fig.3

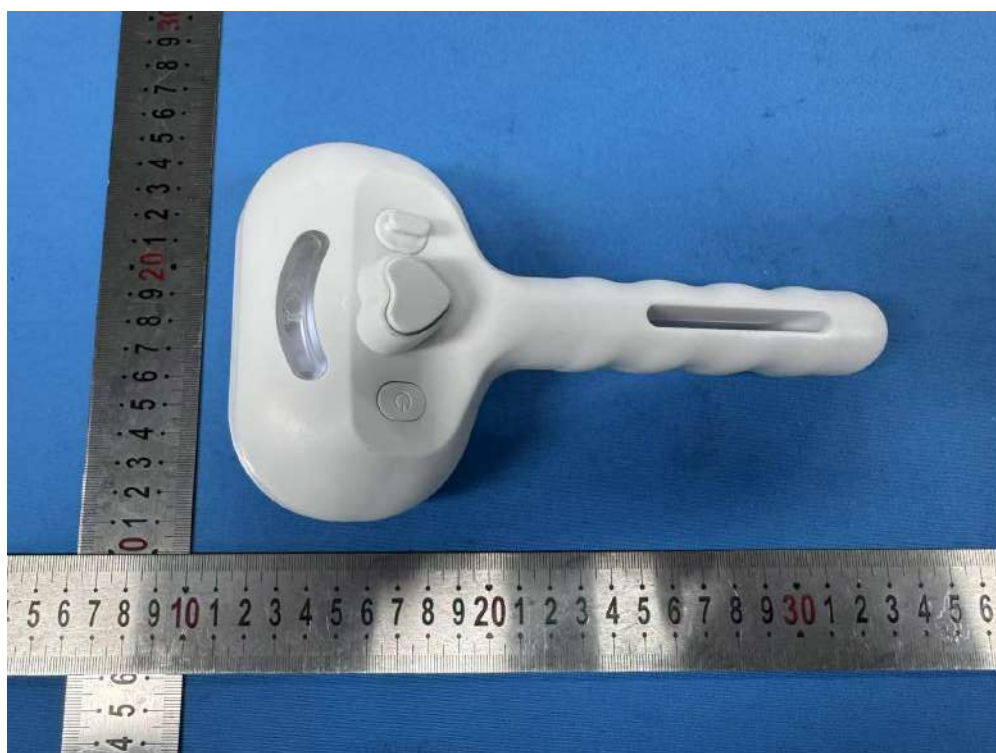


Fig.4





Fig.5



Fig.6





Fig.7

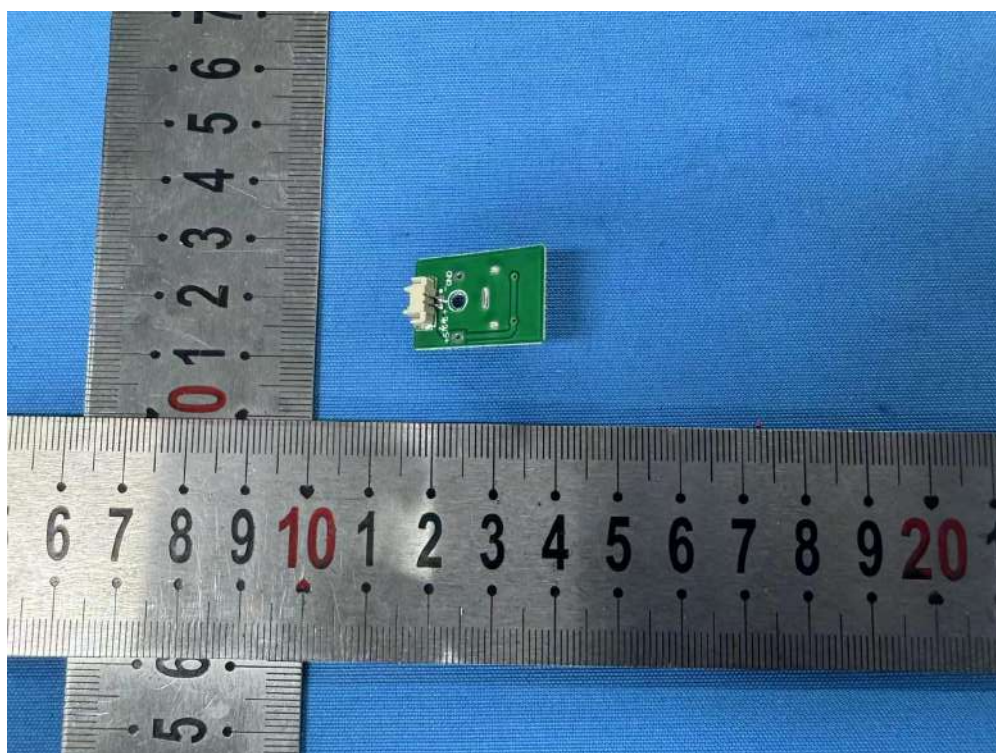


Fig.8

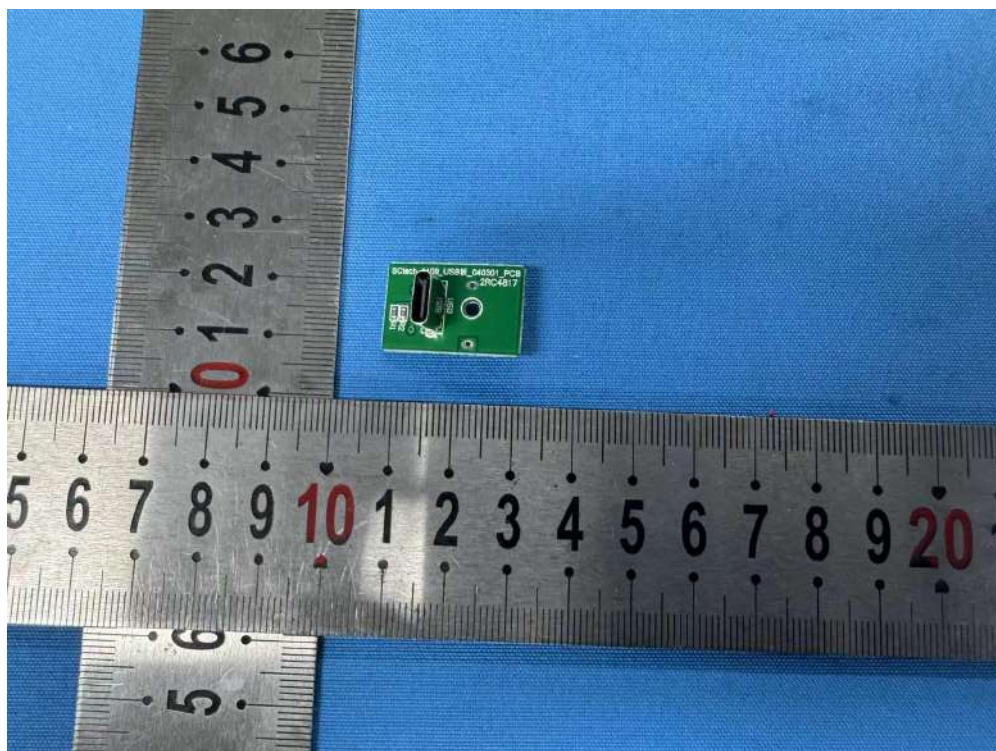


Fig.9

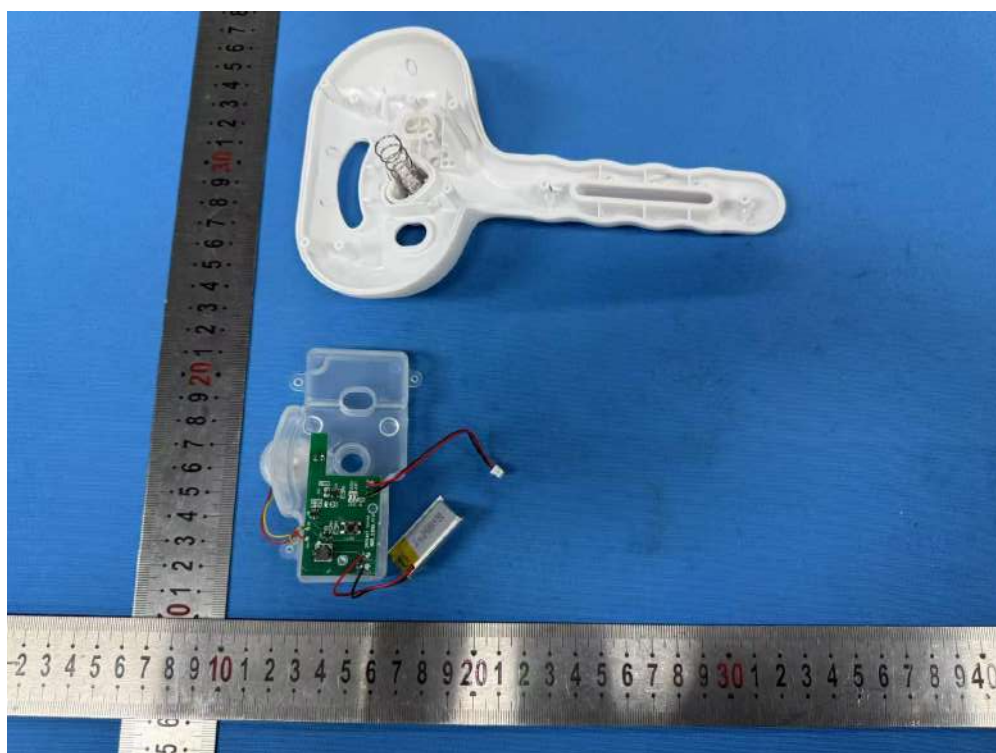


Fig.10



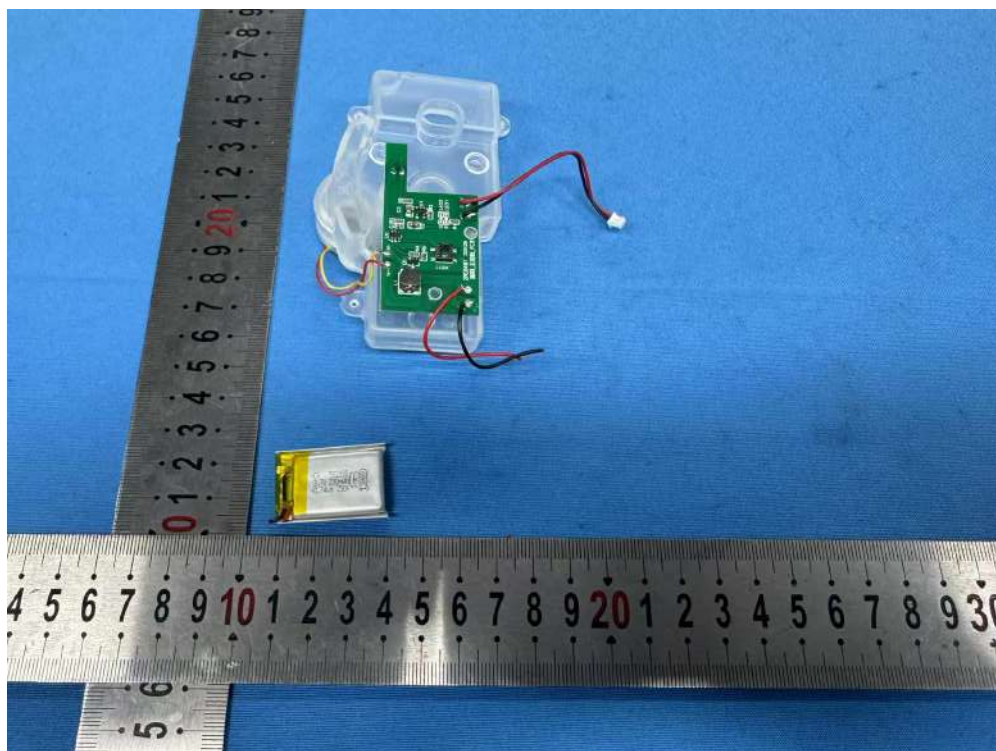


Fig.11



Fig.12

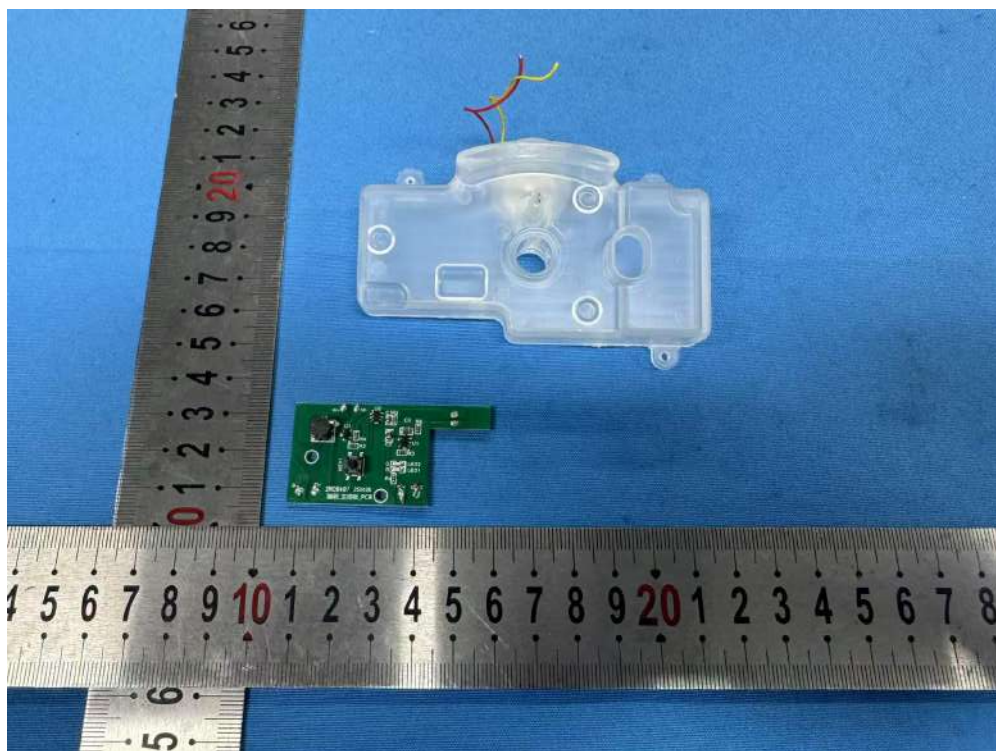


Fig.13



Fig.14



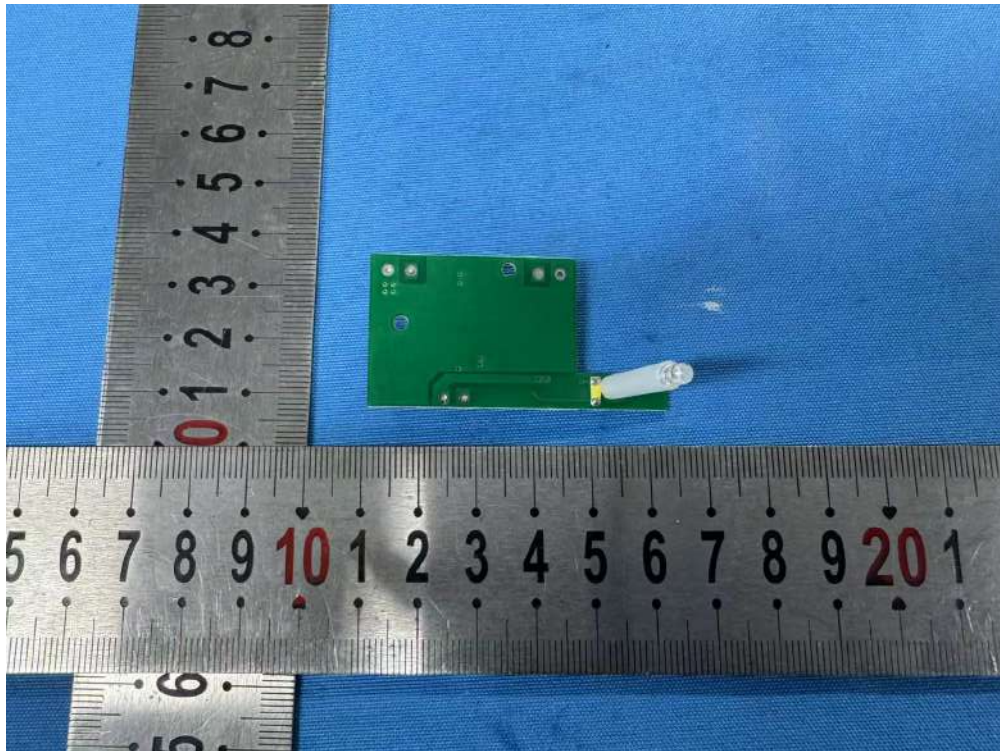


Fig.15

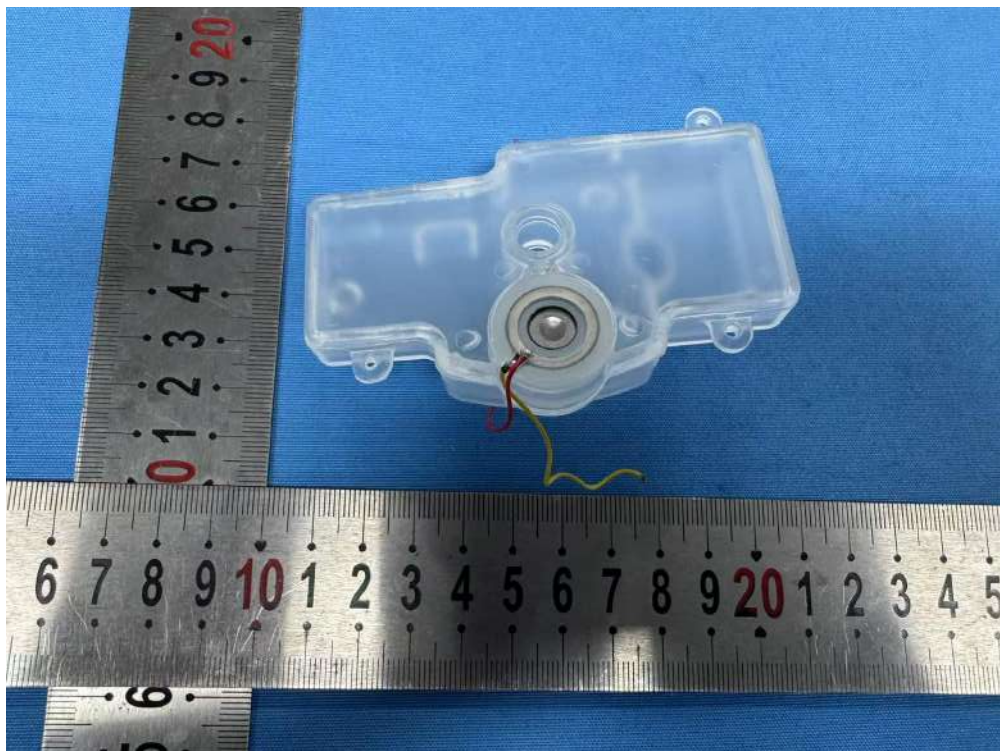


Fig.16

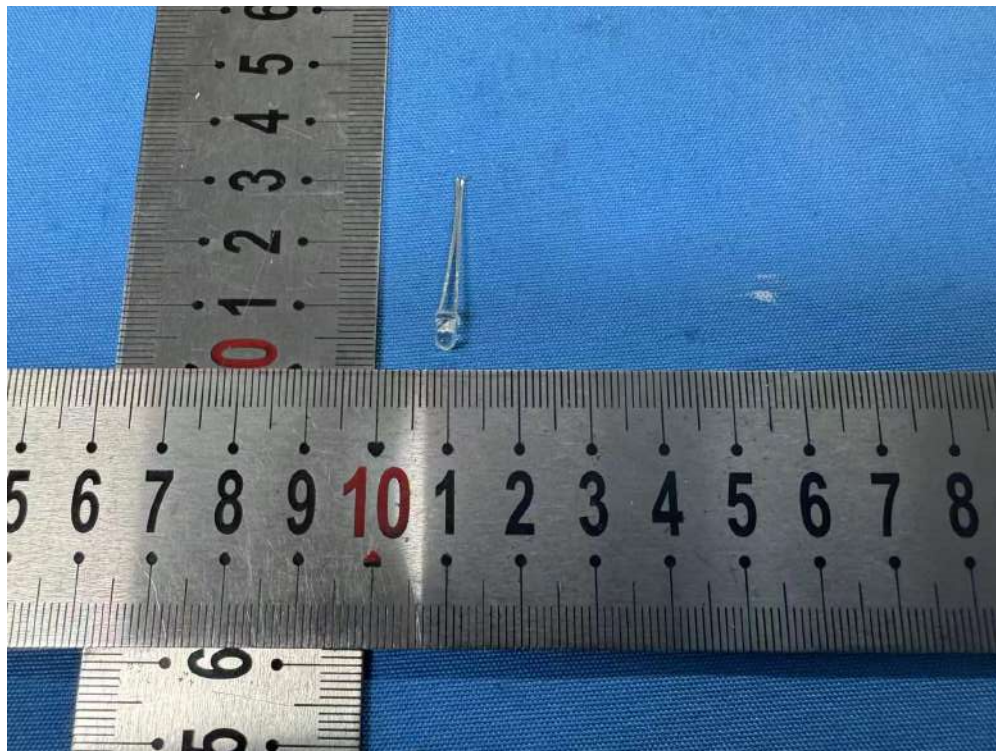


Fig.17

.....End of Report.....