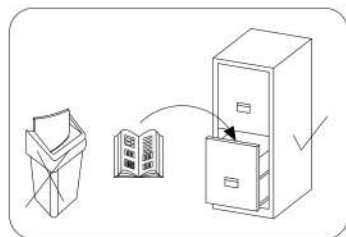
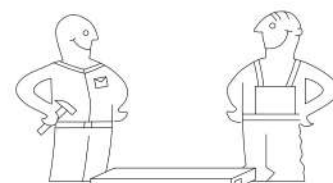




## ASSEMBLY INSTRUCTIONS

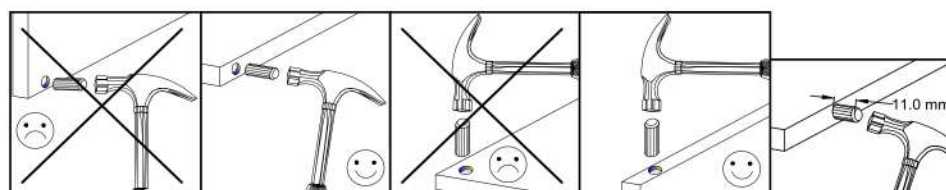
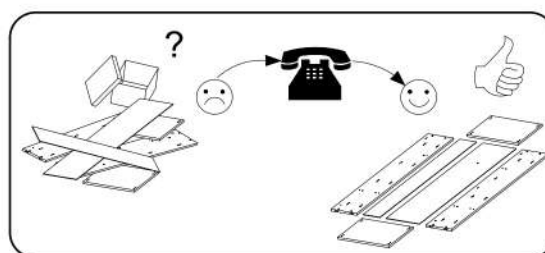
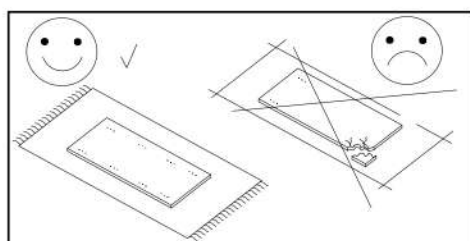
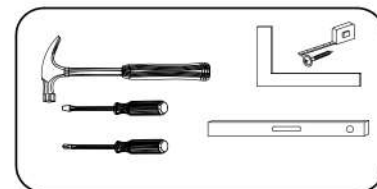


Time to assemble



1 hours

Tools required



## Caution

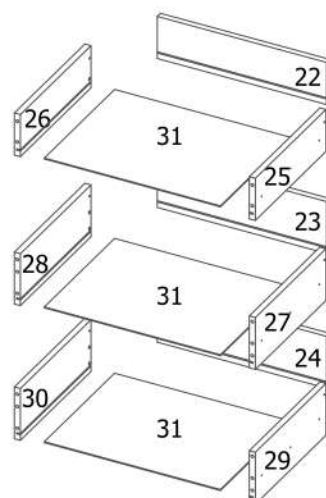
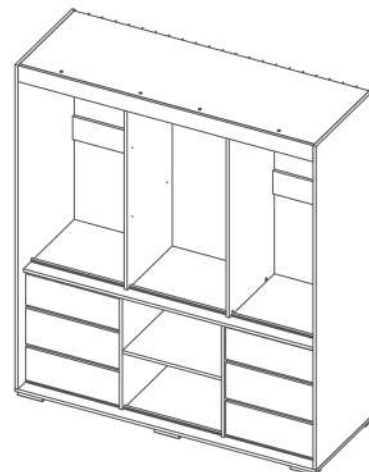
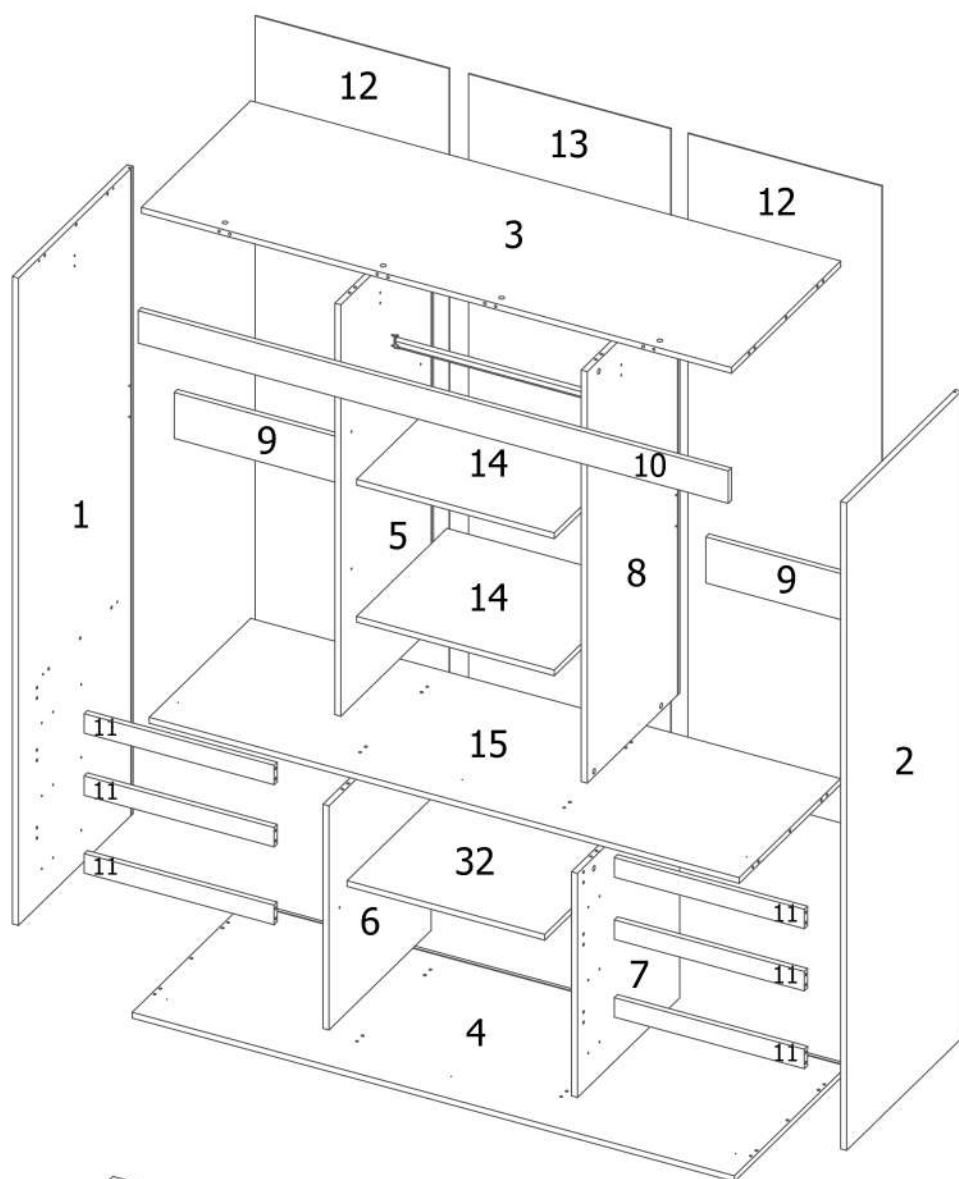
**GB** Please only clean with a duster or a damp cloth. Do not use any abrasive cleaners.

Dear customer, should there be any piece missing or damaged, kindly mark this piece clearly on the attached assembly instructions and return them to us.

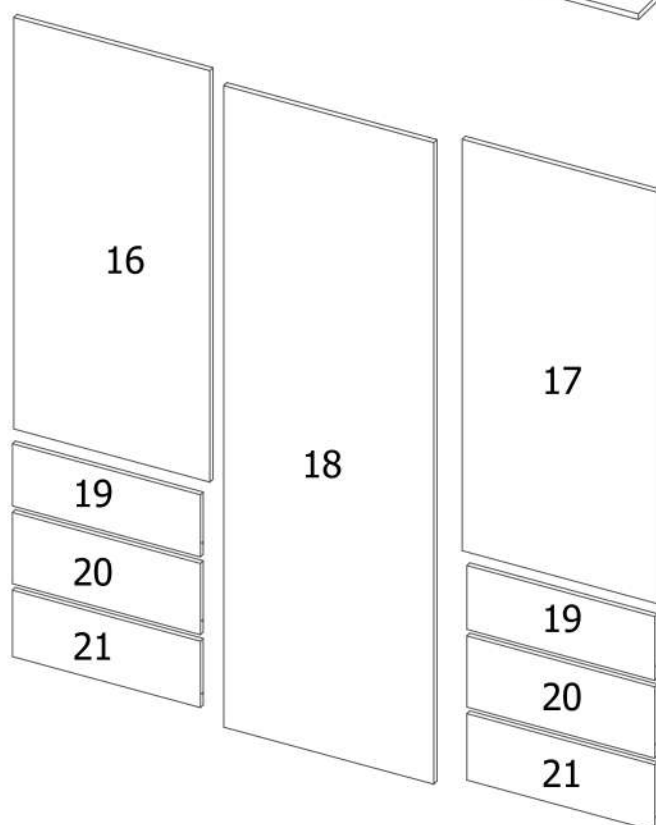
## Service card

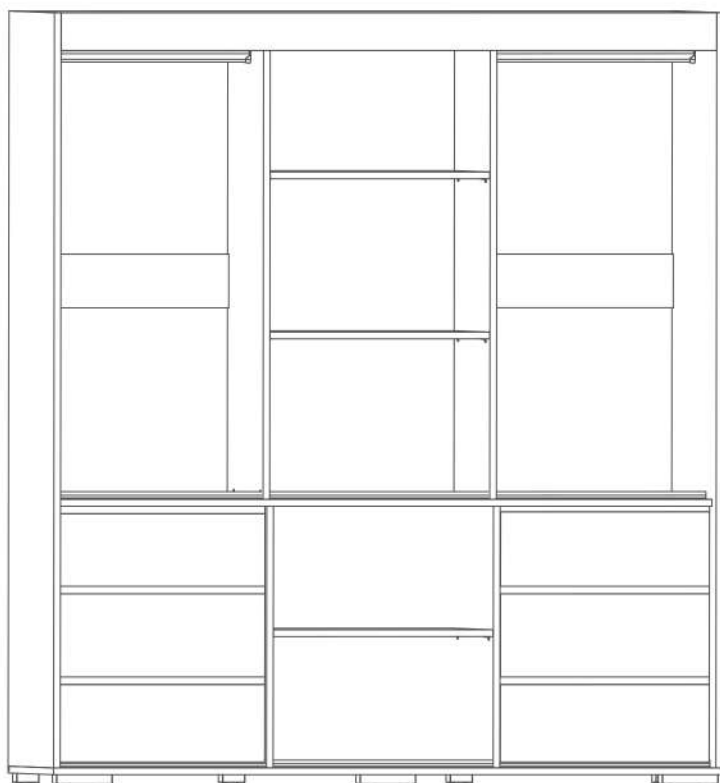
### ACCESSORIES

8.0x30  D 112	8.0x45  D1 4	 A1 4	Ø15x12  B 32	 X 32	4.0x16  H 25	6,3x13  F2 12	3.0x13  H3 4	 GW 20	 BS 1	 SZ 4
 A 24	 Q 1	 I 27	 KP 12	GLUE  4	 U 6	5.0x13  F1 48	 KR 1	 S 12	 RD 6	 RG 6
 Straps 4					 M 3	 M1 18	3.5x16  H1 2	 AD 8	 O 20	 H4 20



x 2



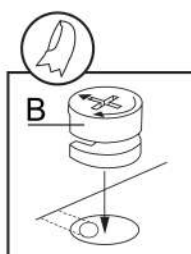
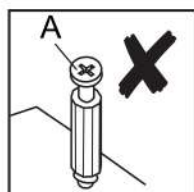
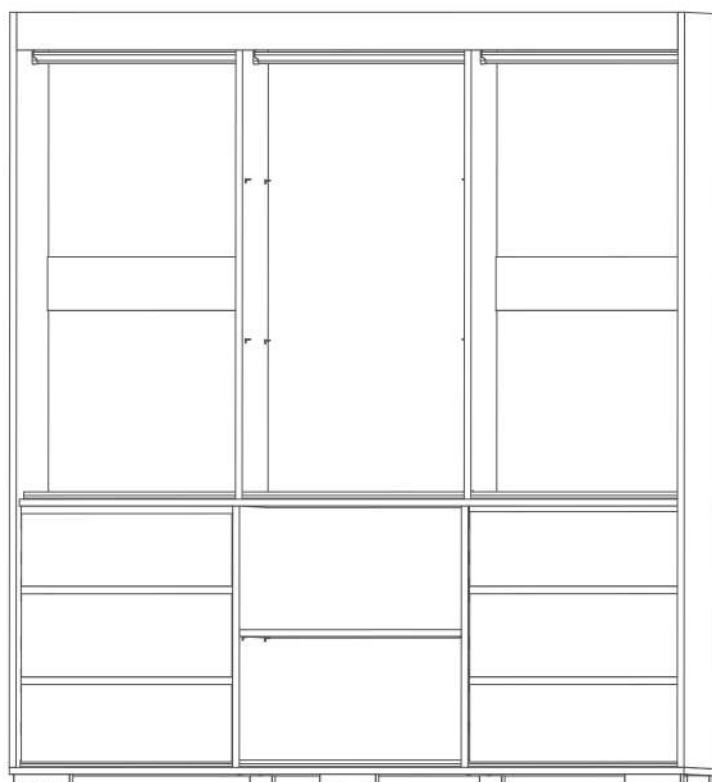


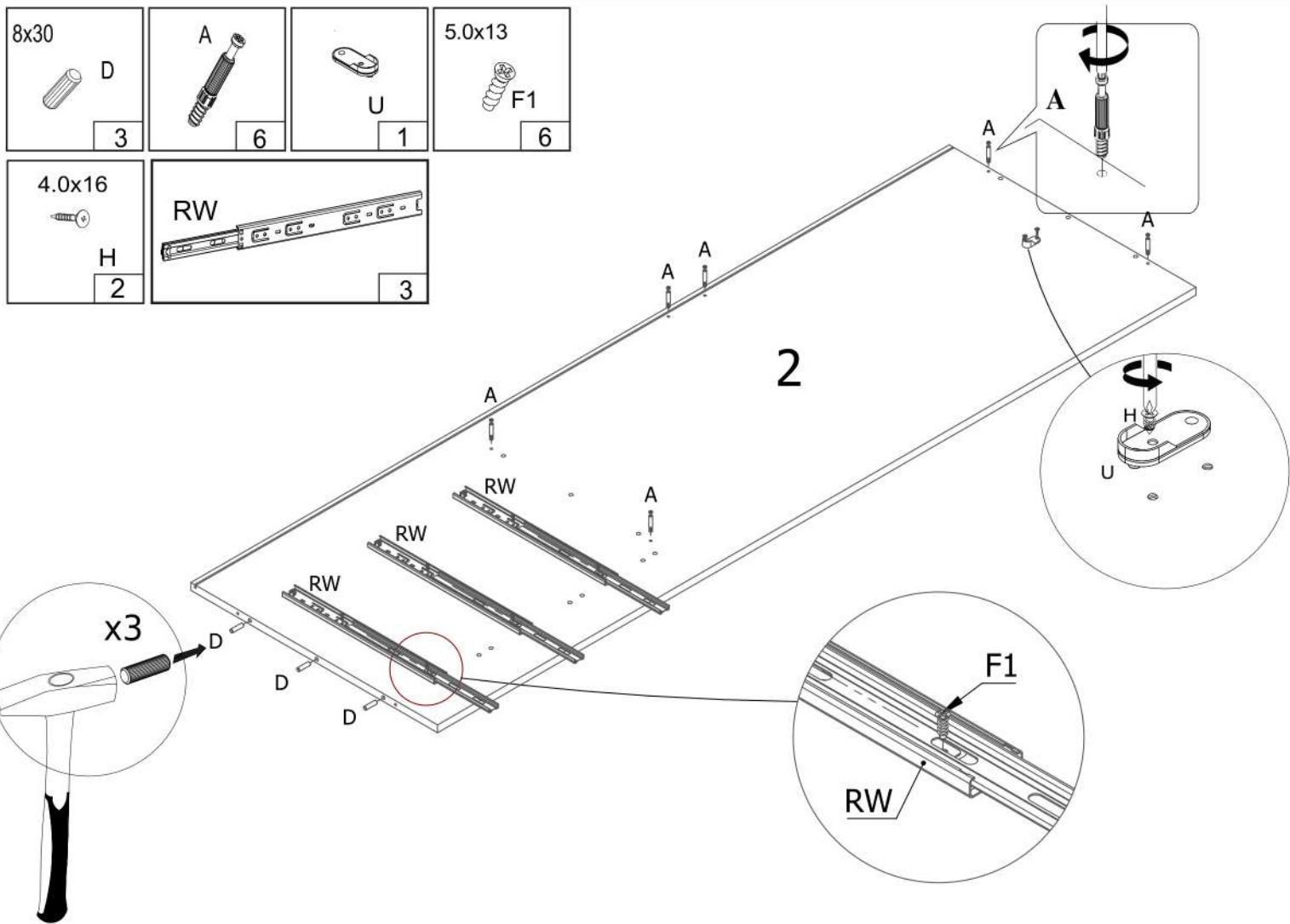
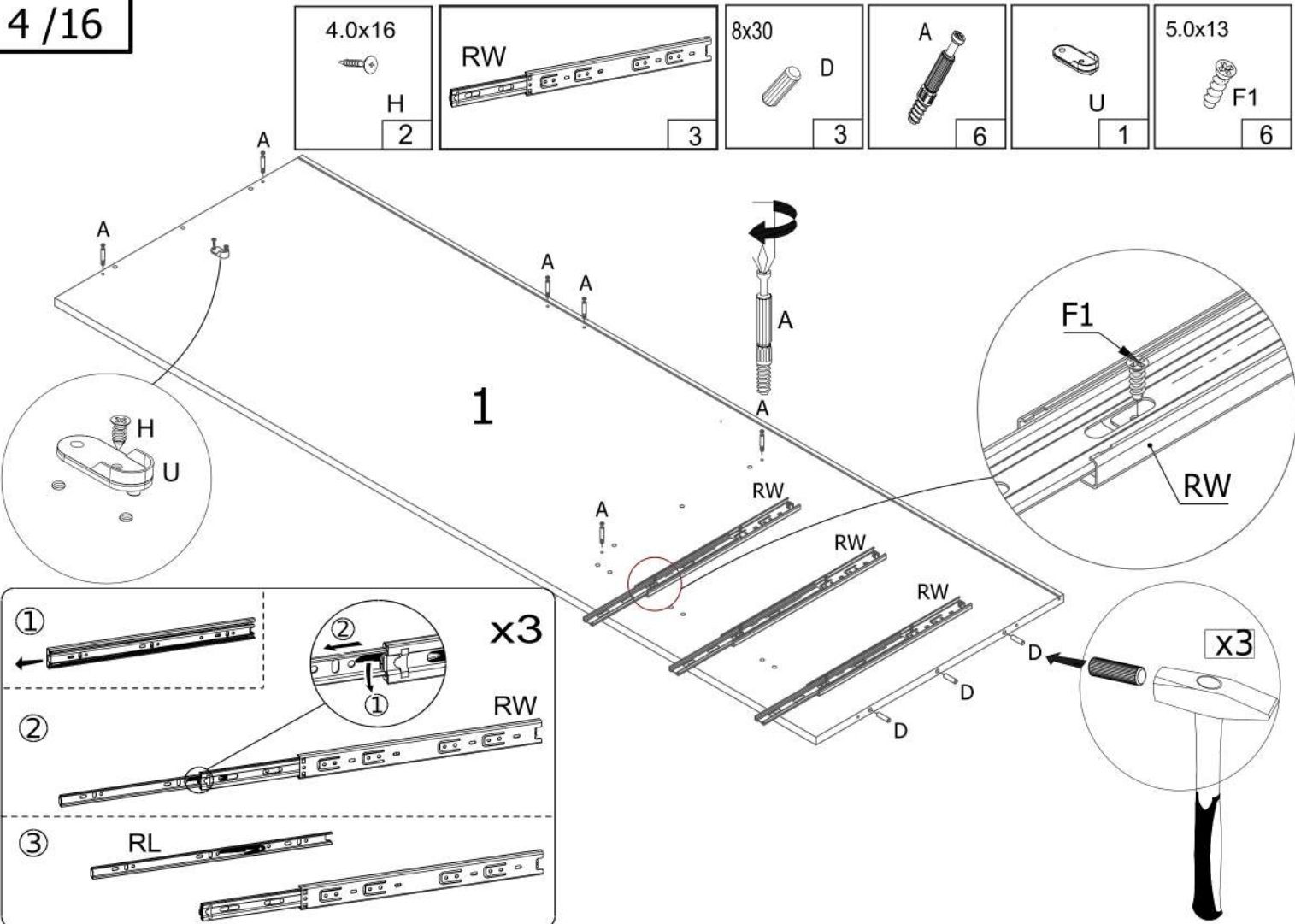
## OPTION A

2 pcs hanging rail  
3 pcs shelf

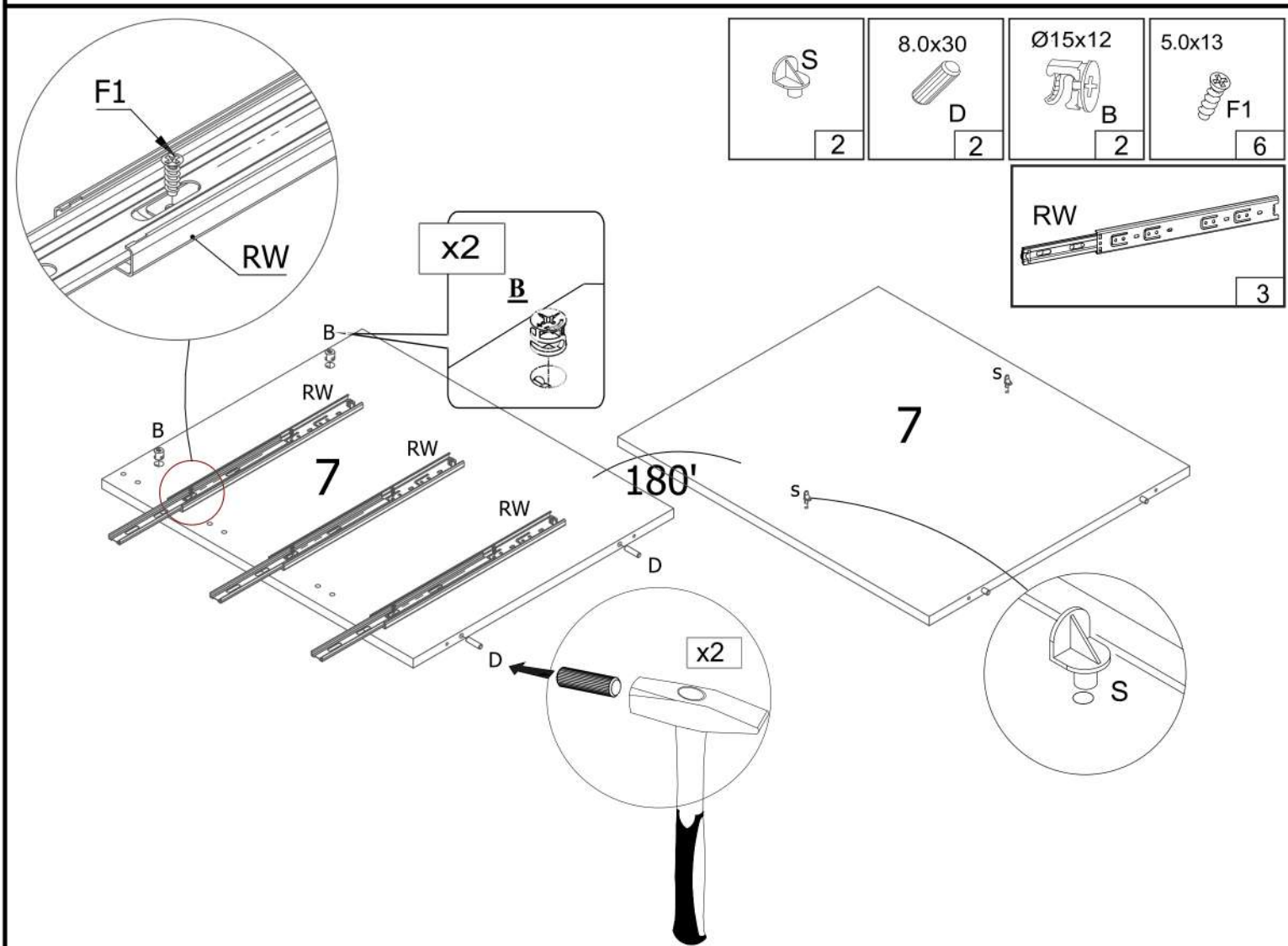
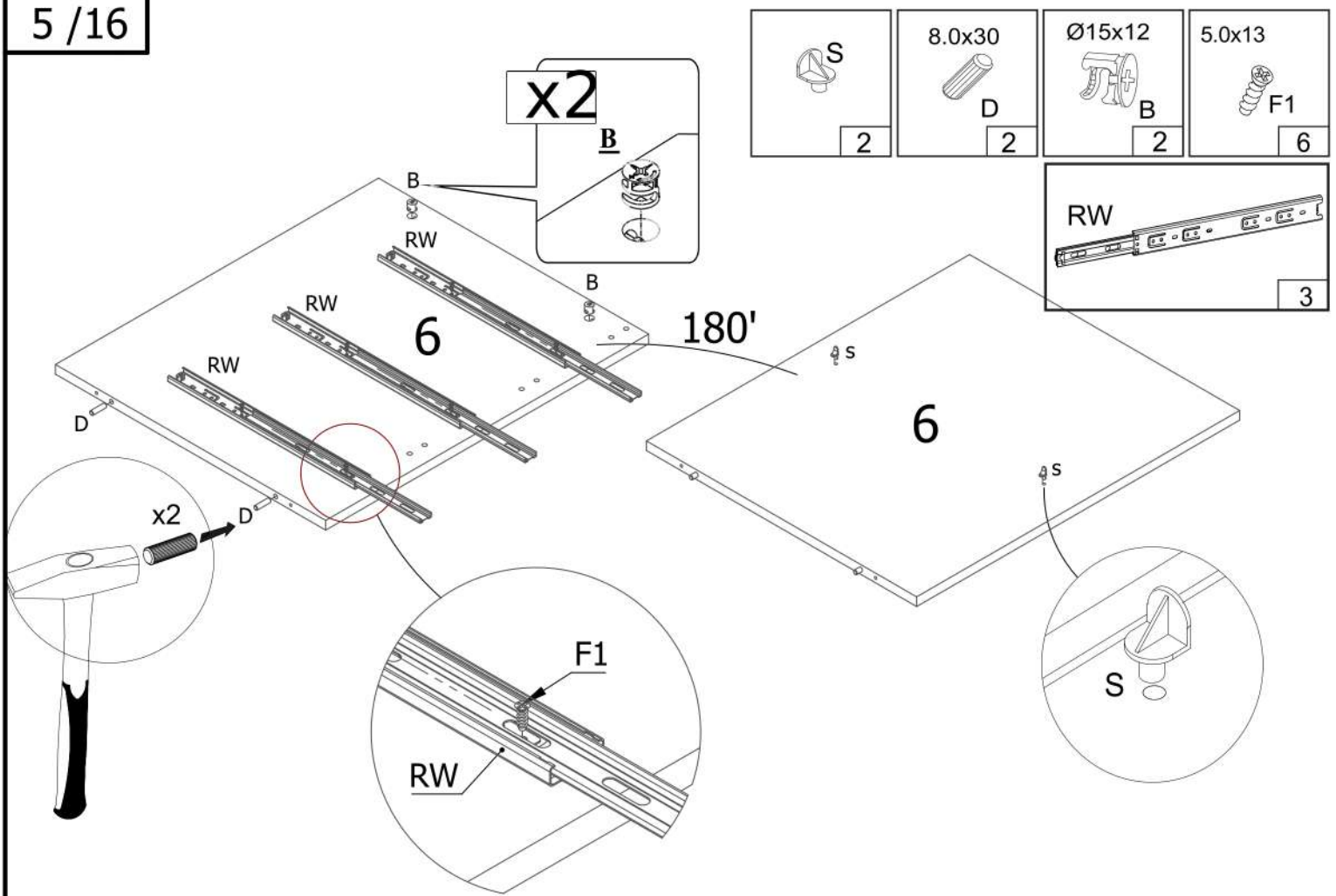
## OPTION B

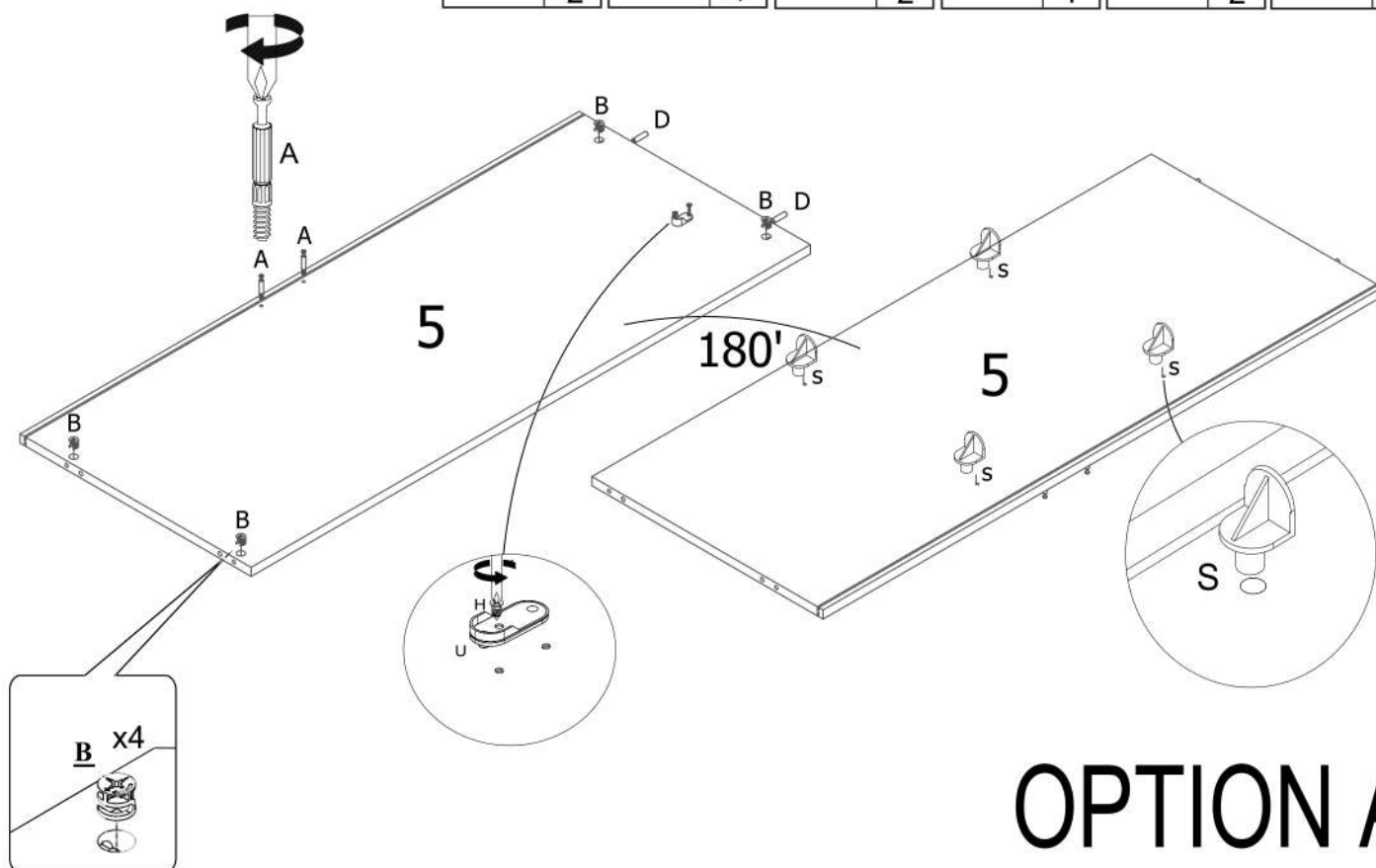
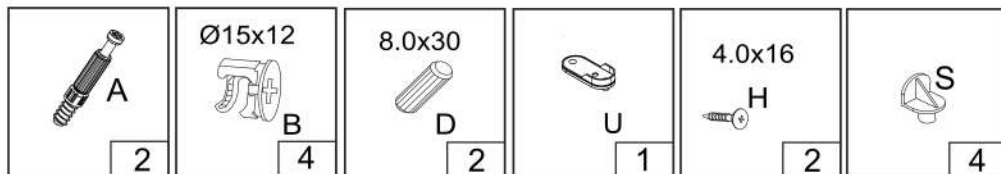
3 pcs hanging rail  
1 pcs shelf



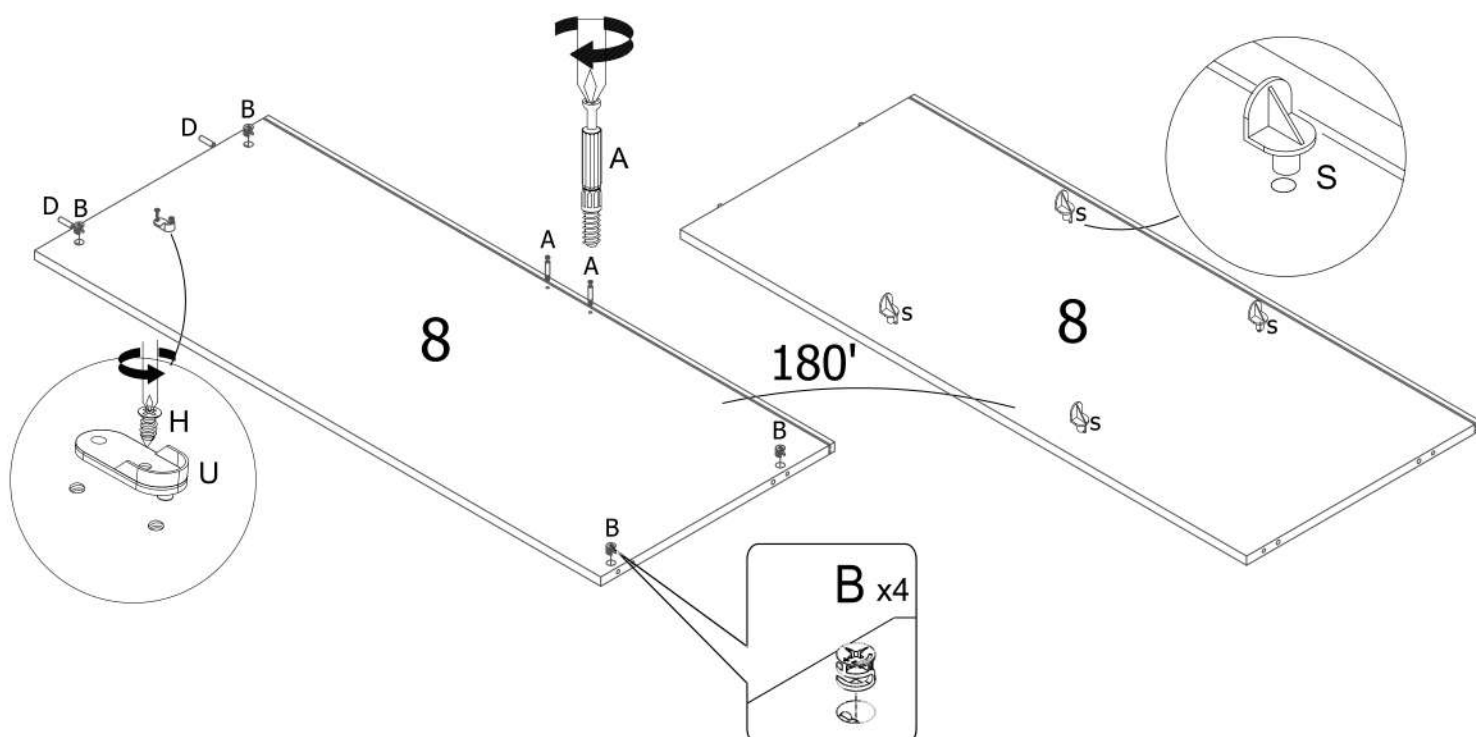
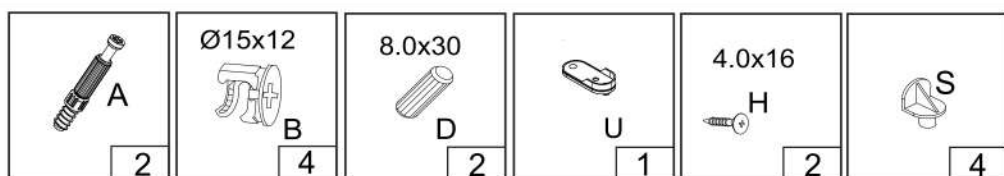


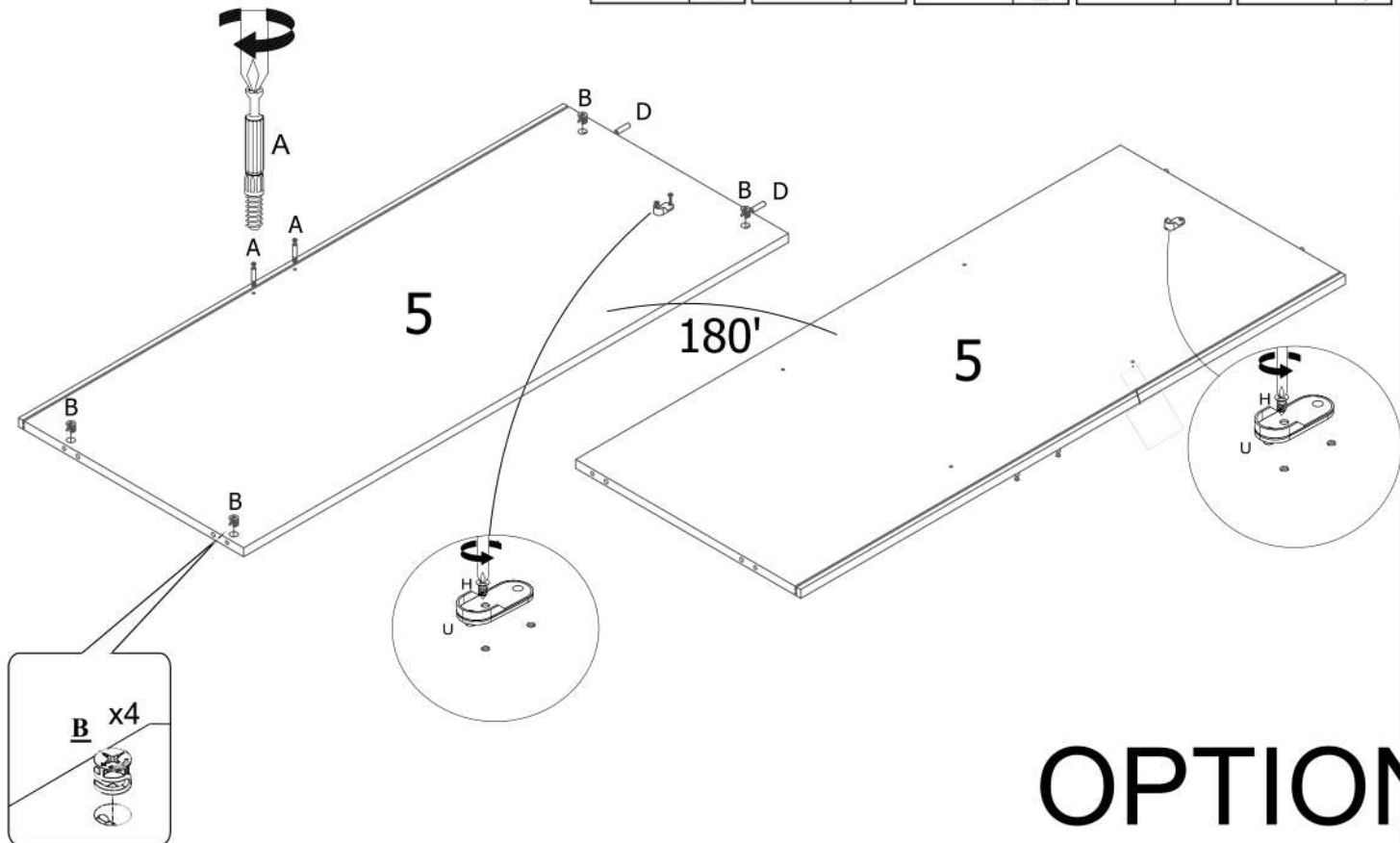
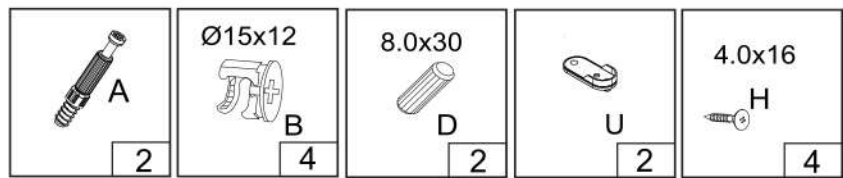




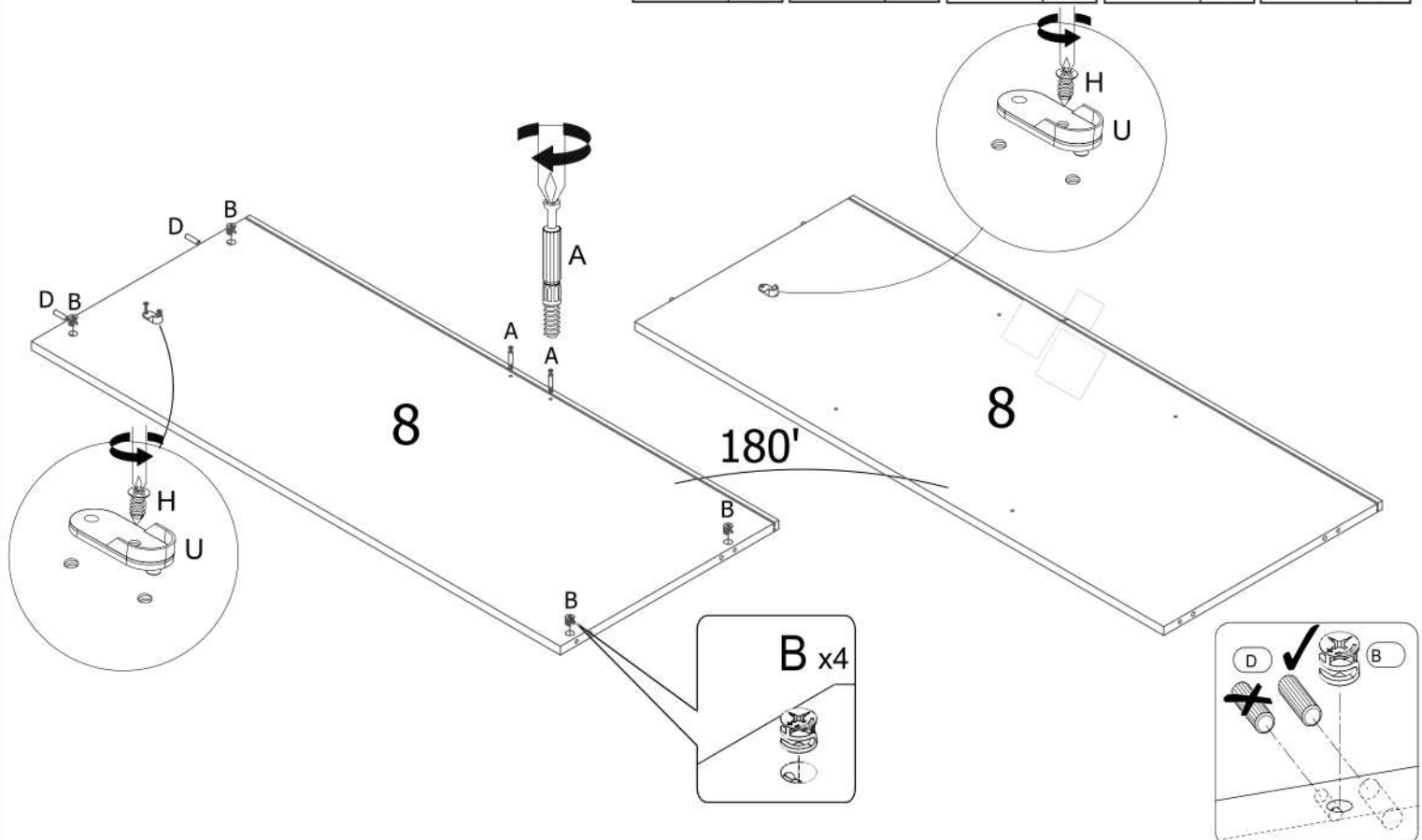
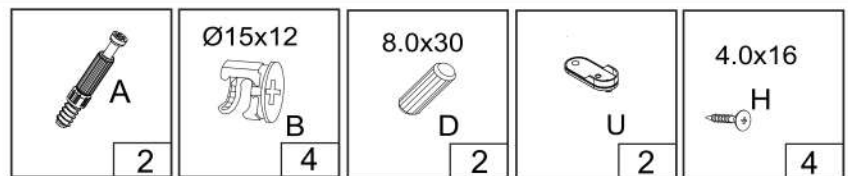


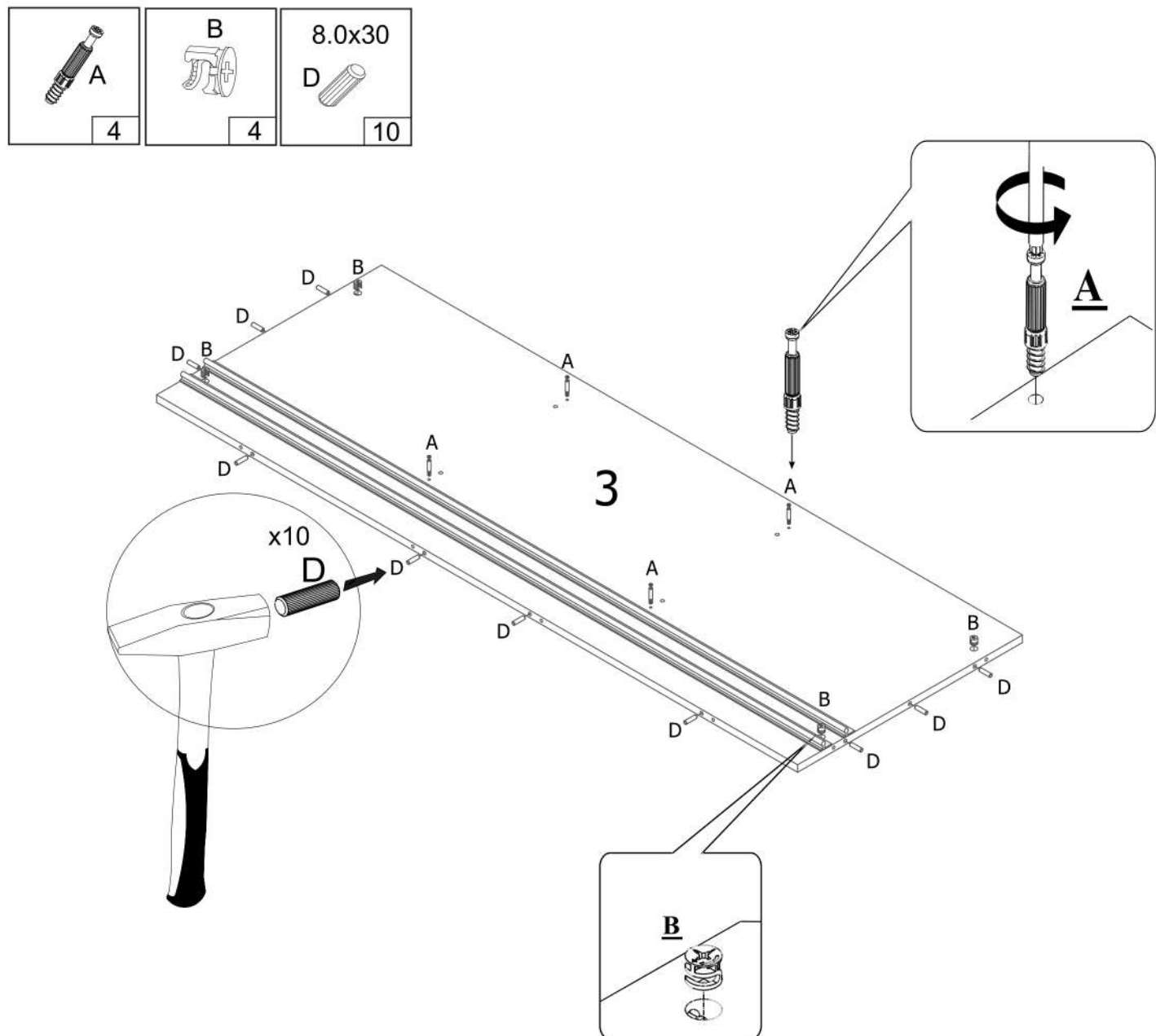
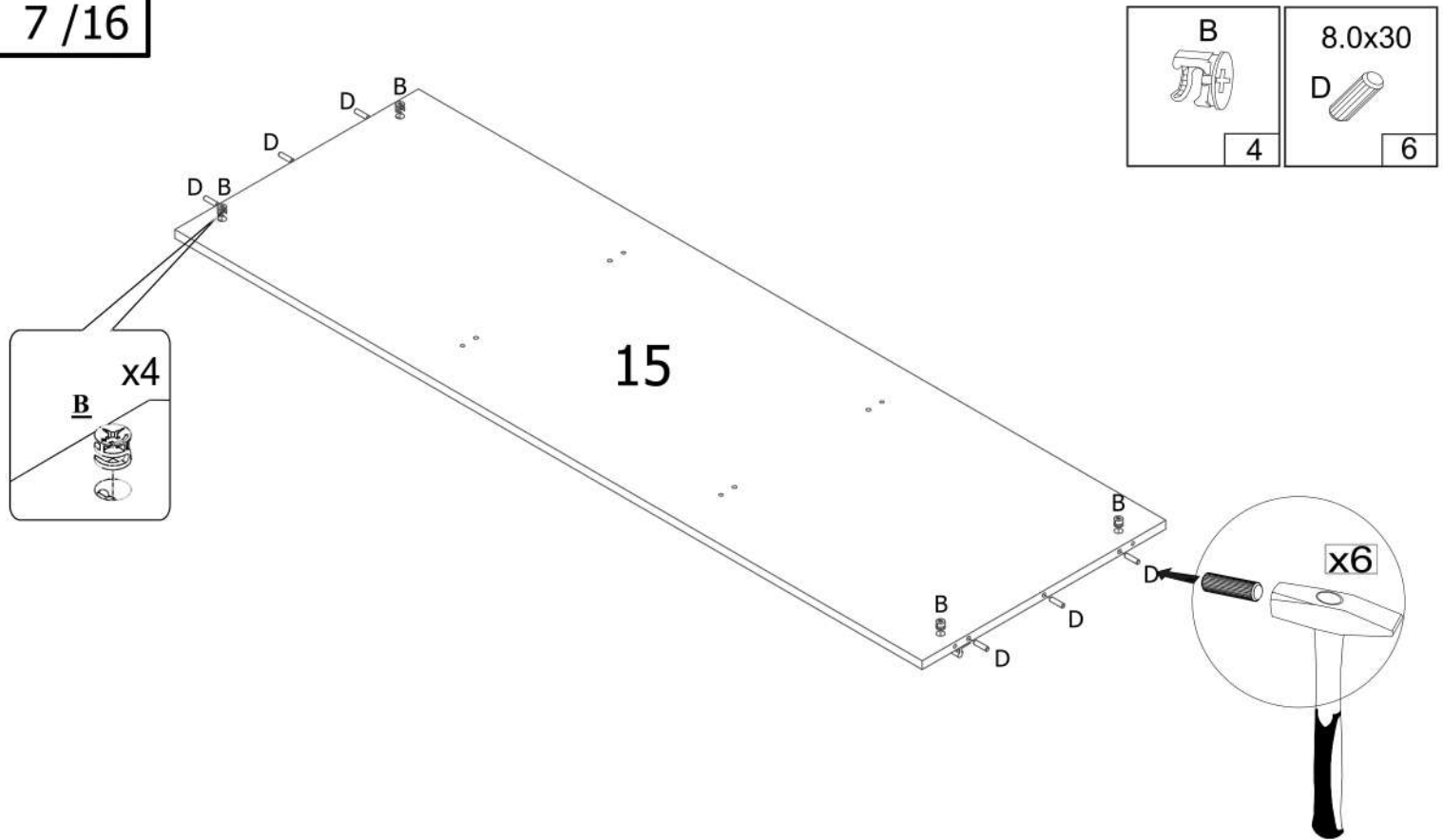
# OPTION A



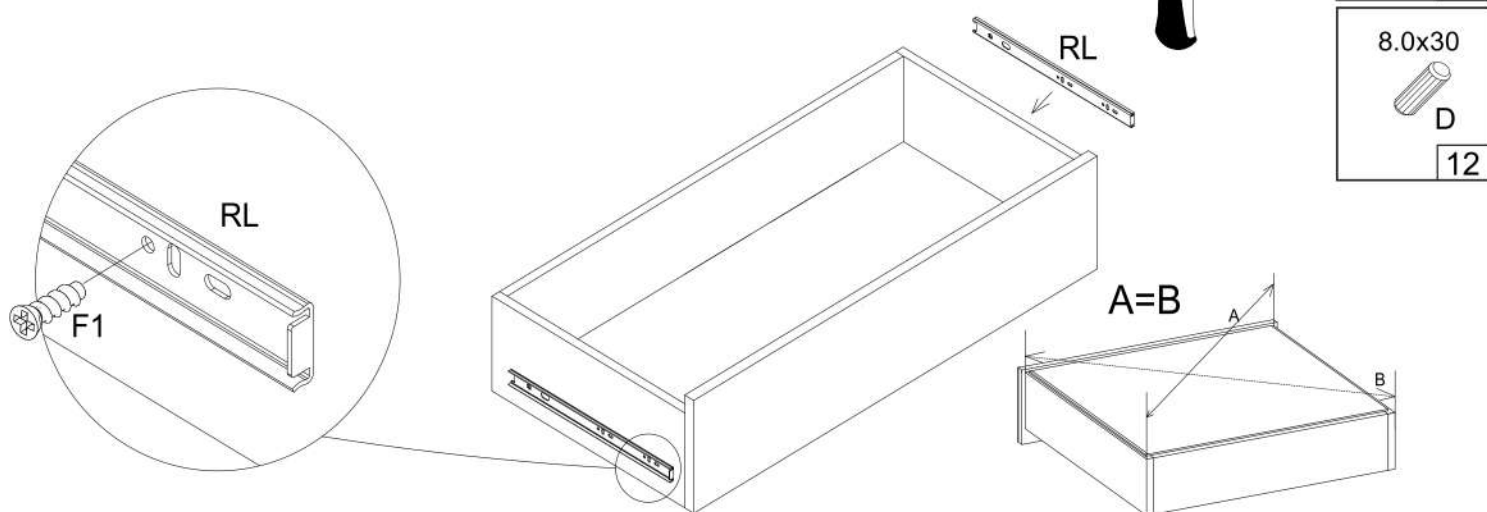
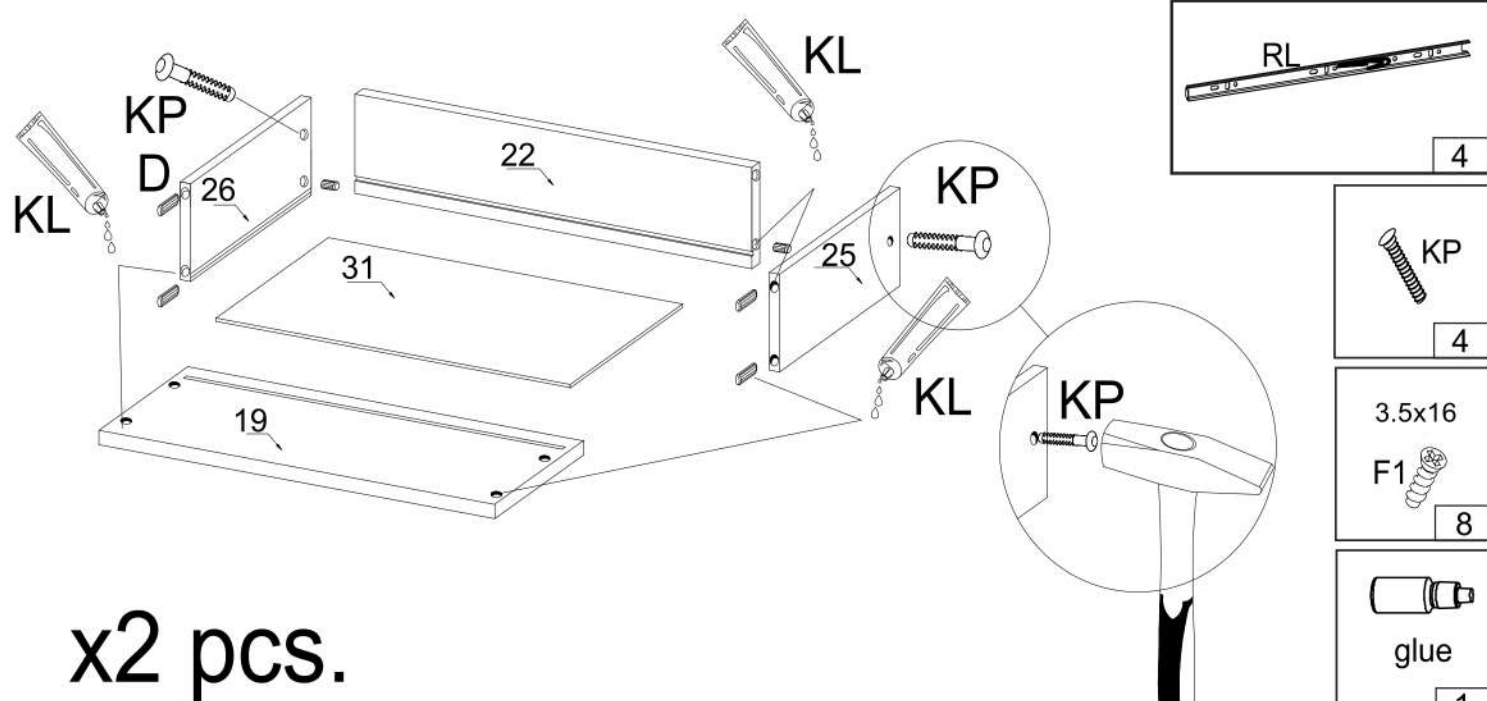
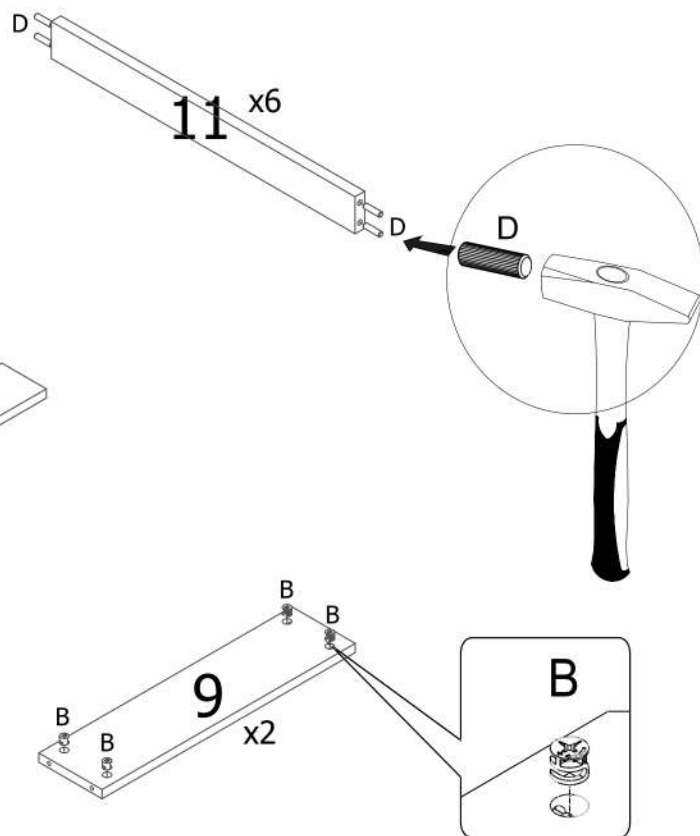
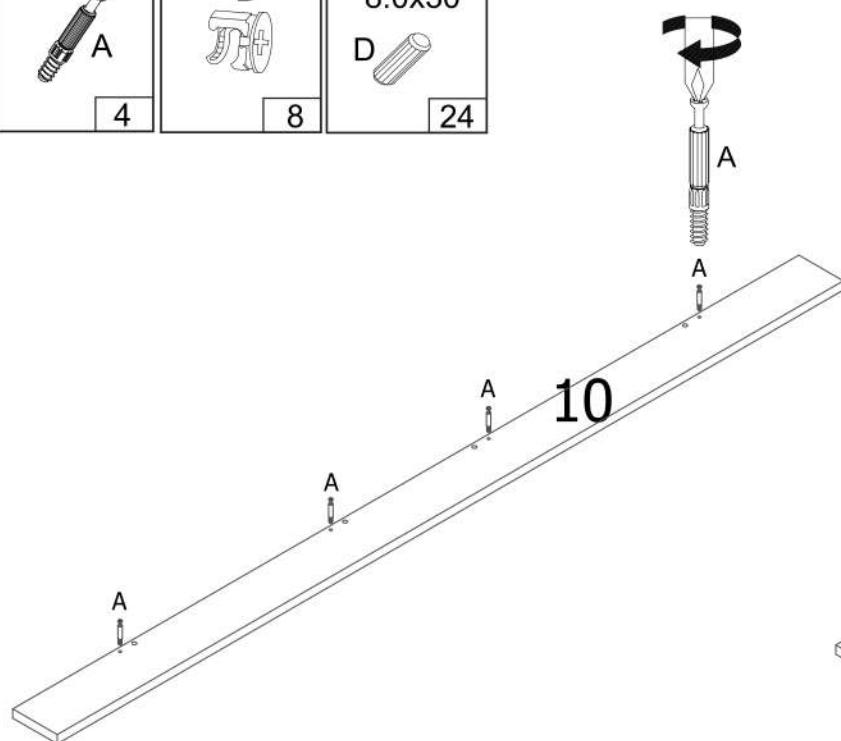
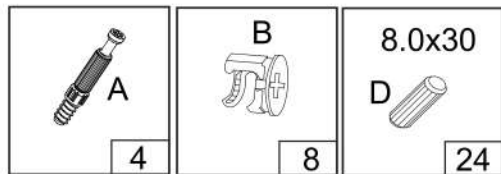


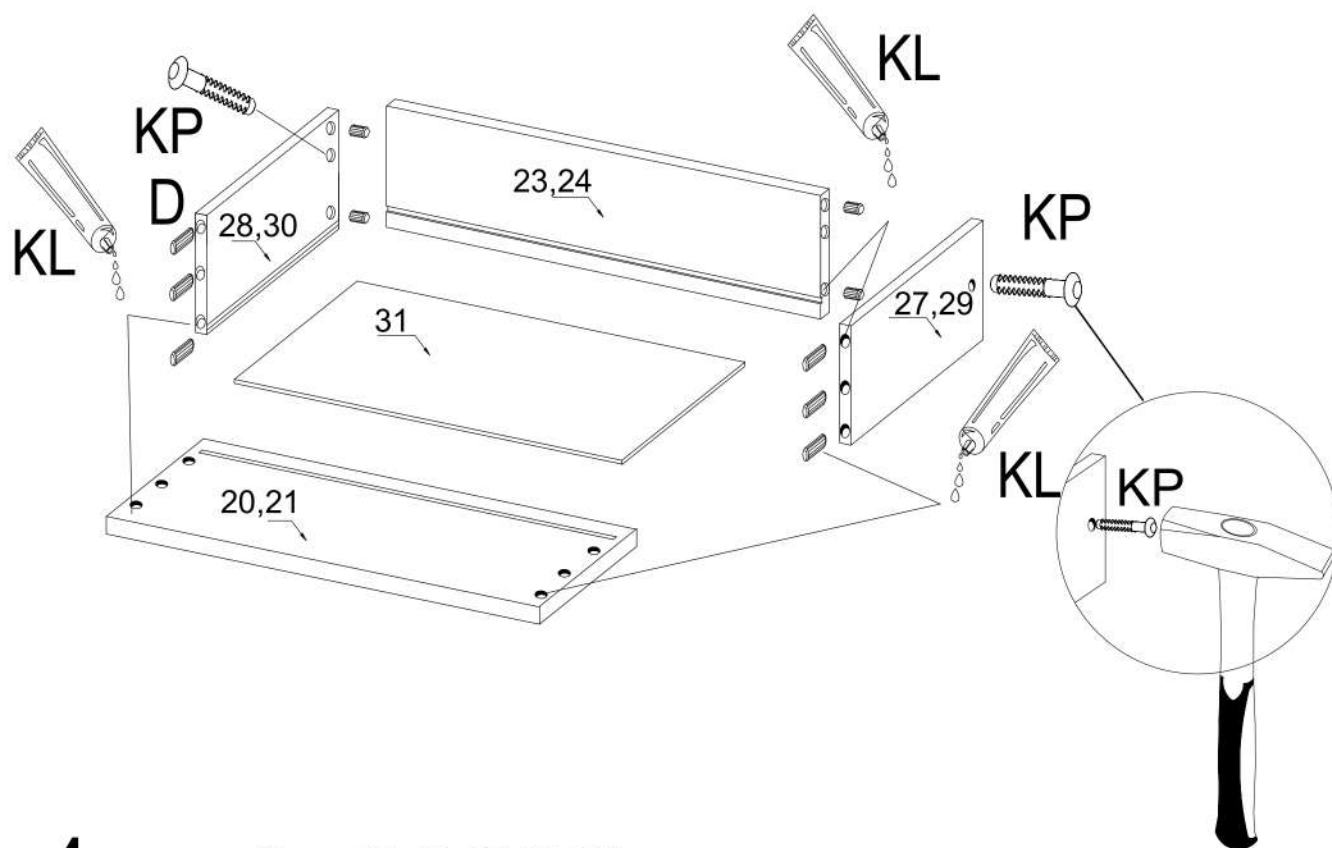
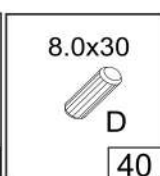
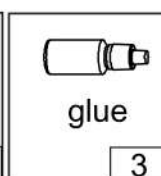
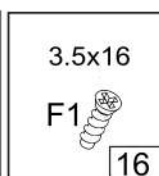
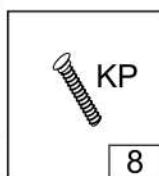
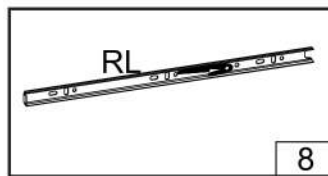
## OPTION B



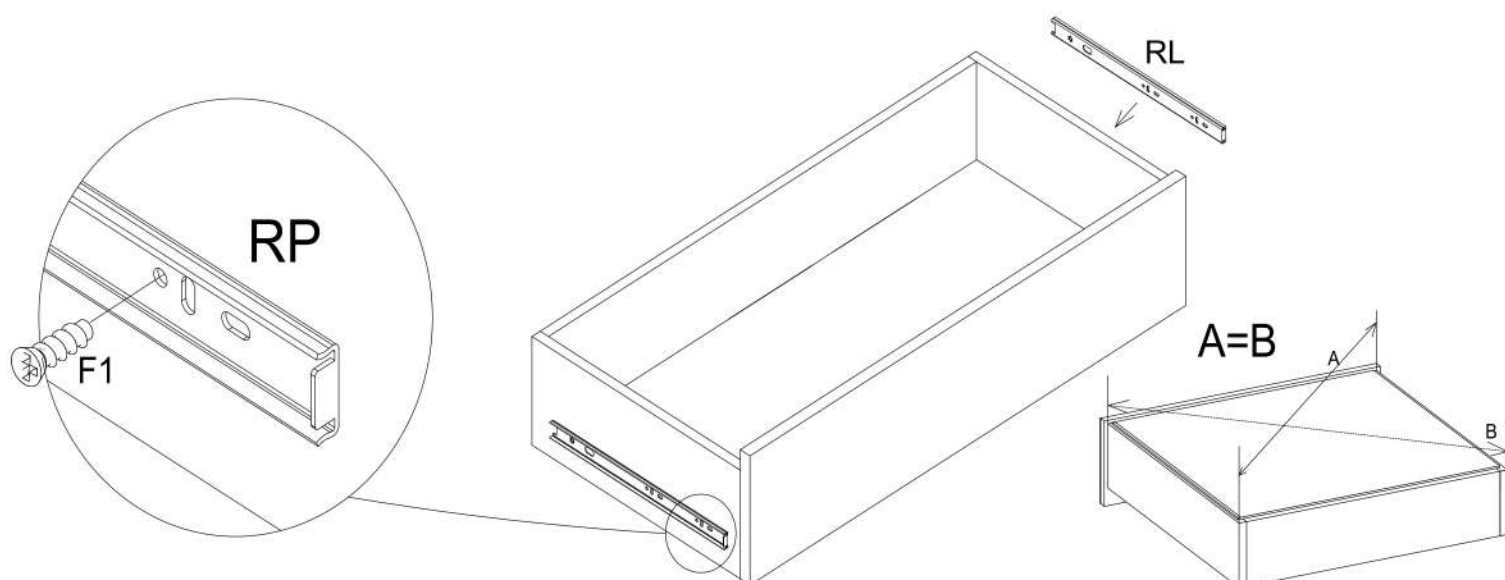


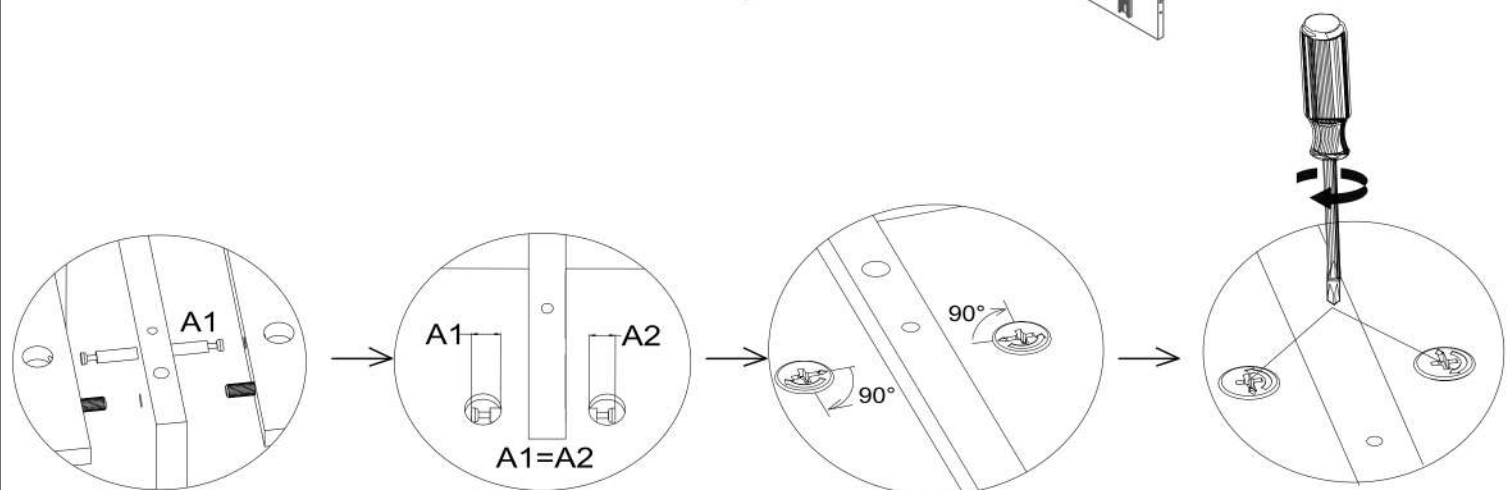
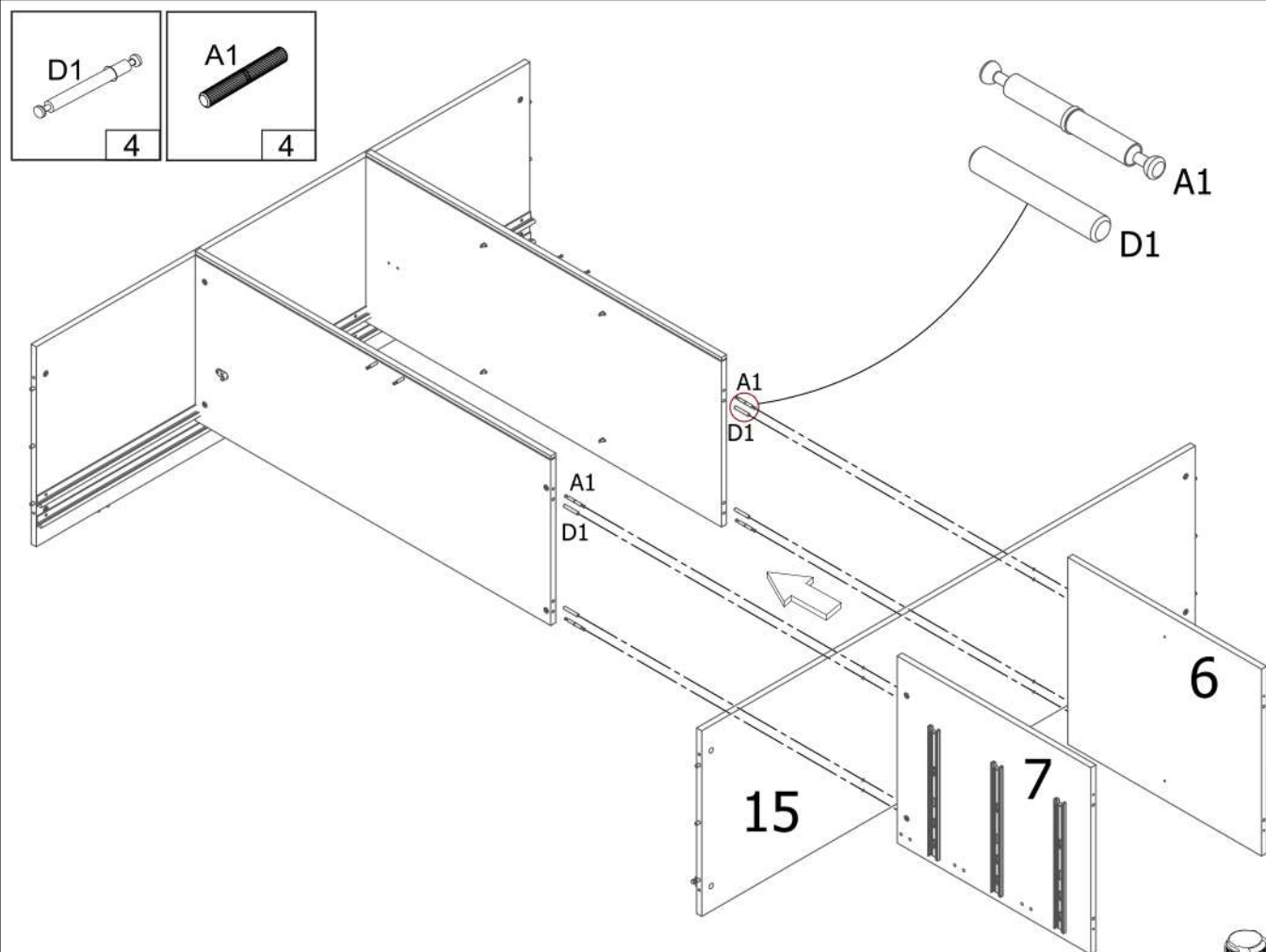
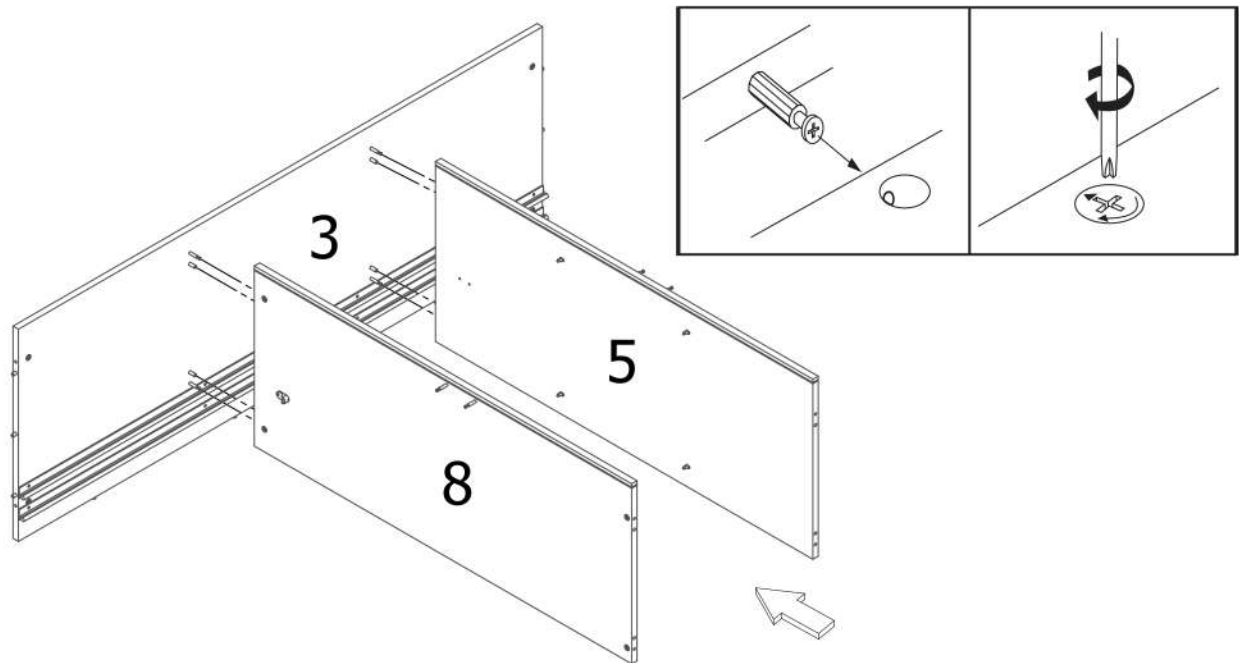


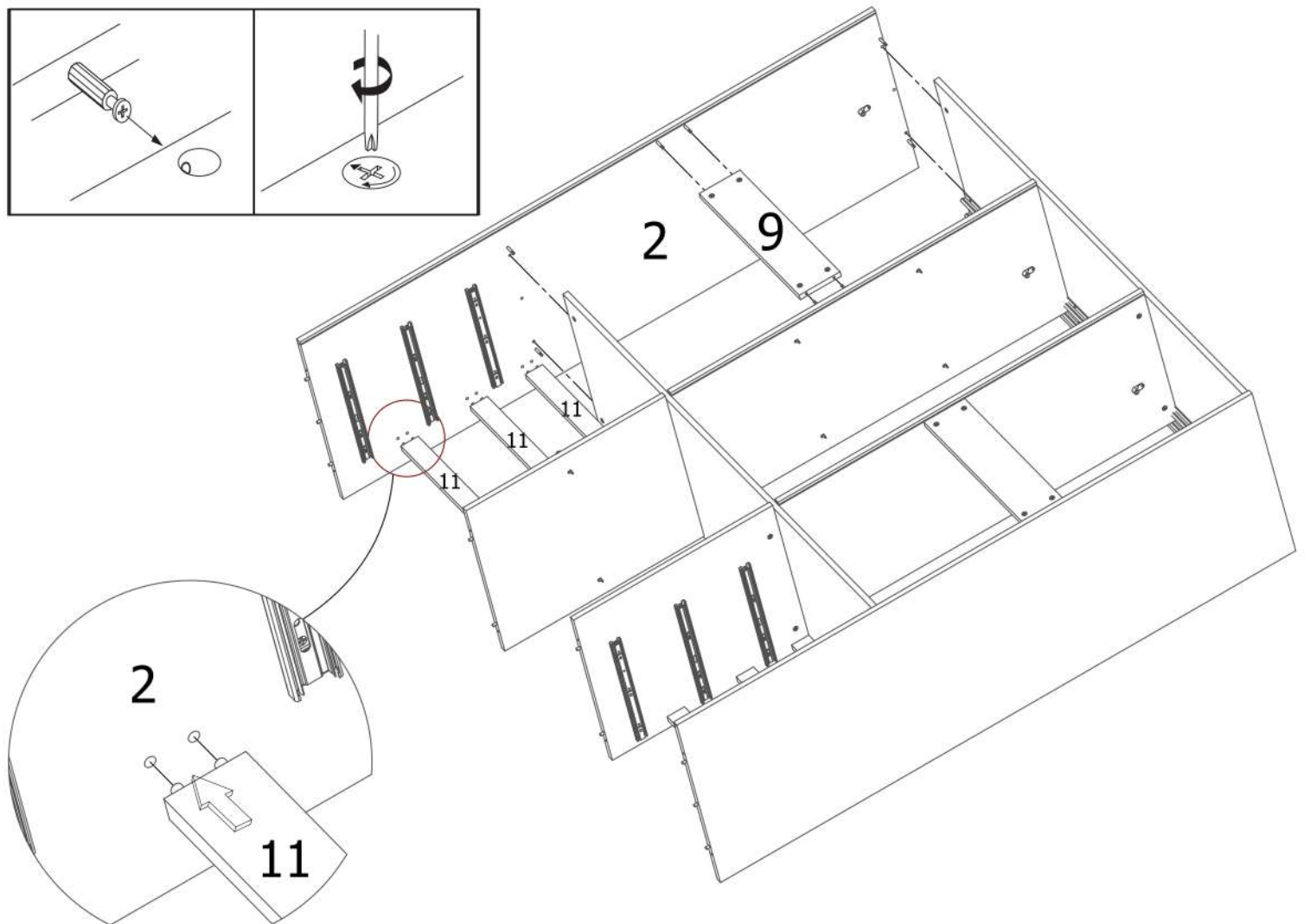
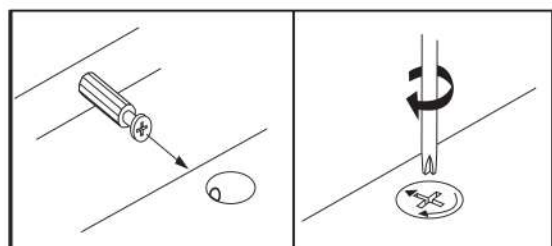
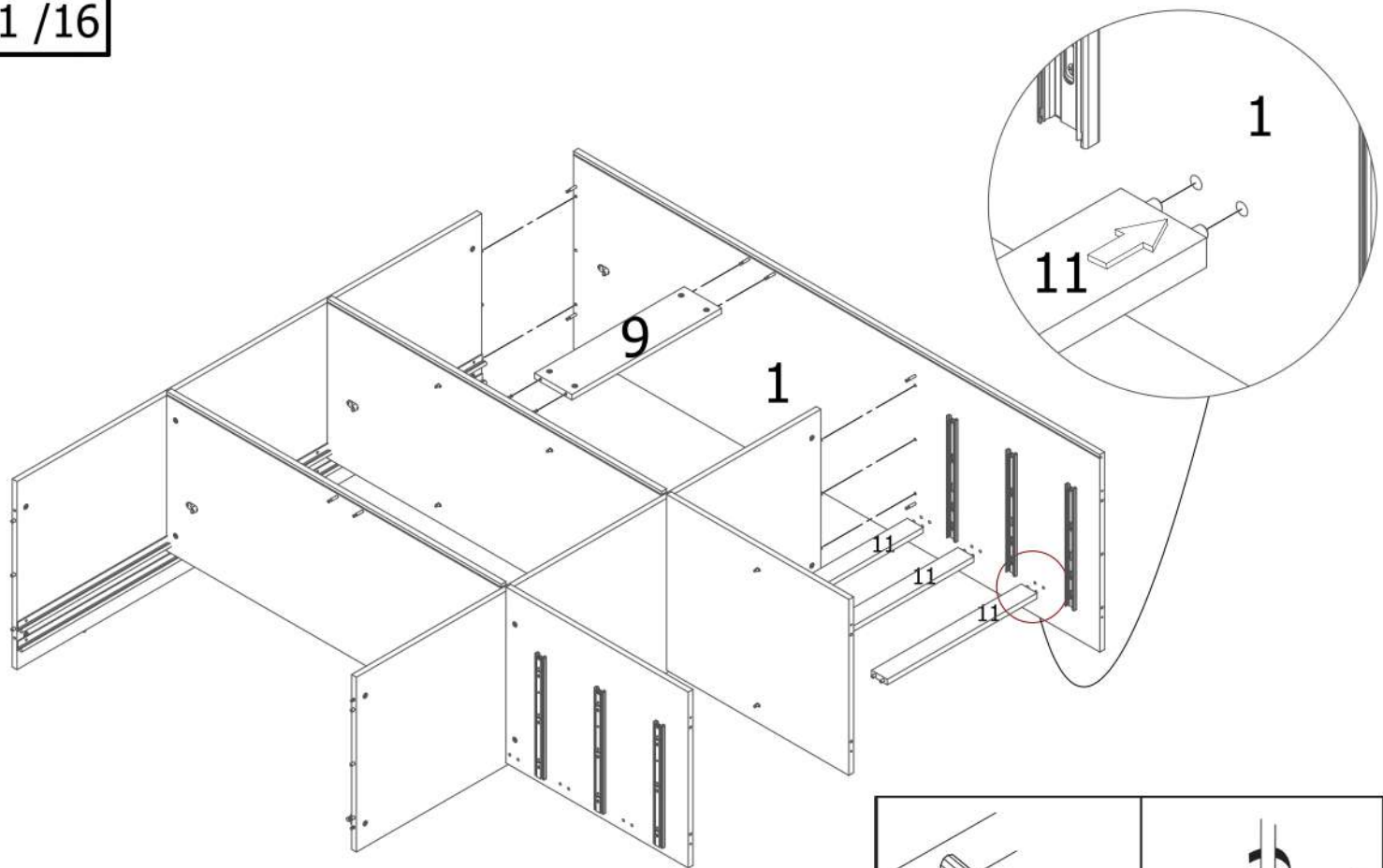


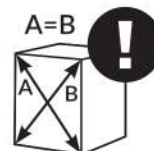
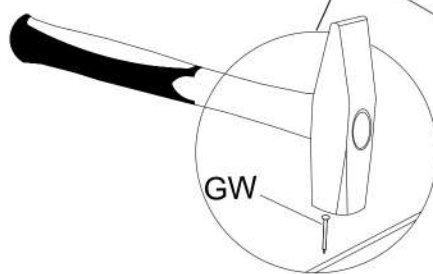
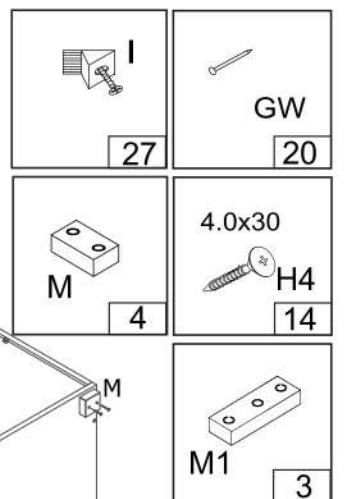
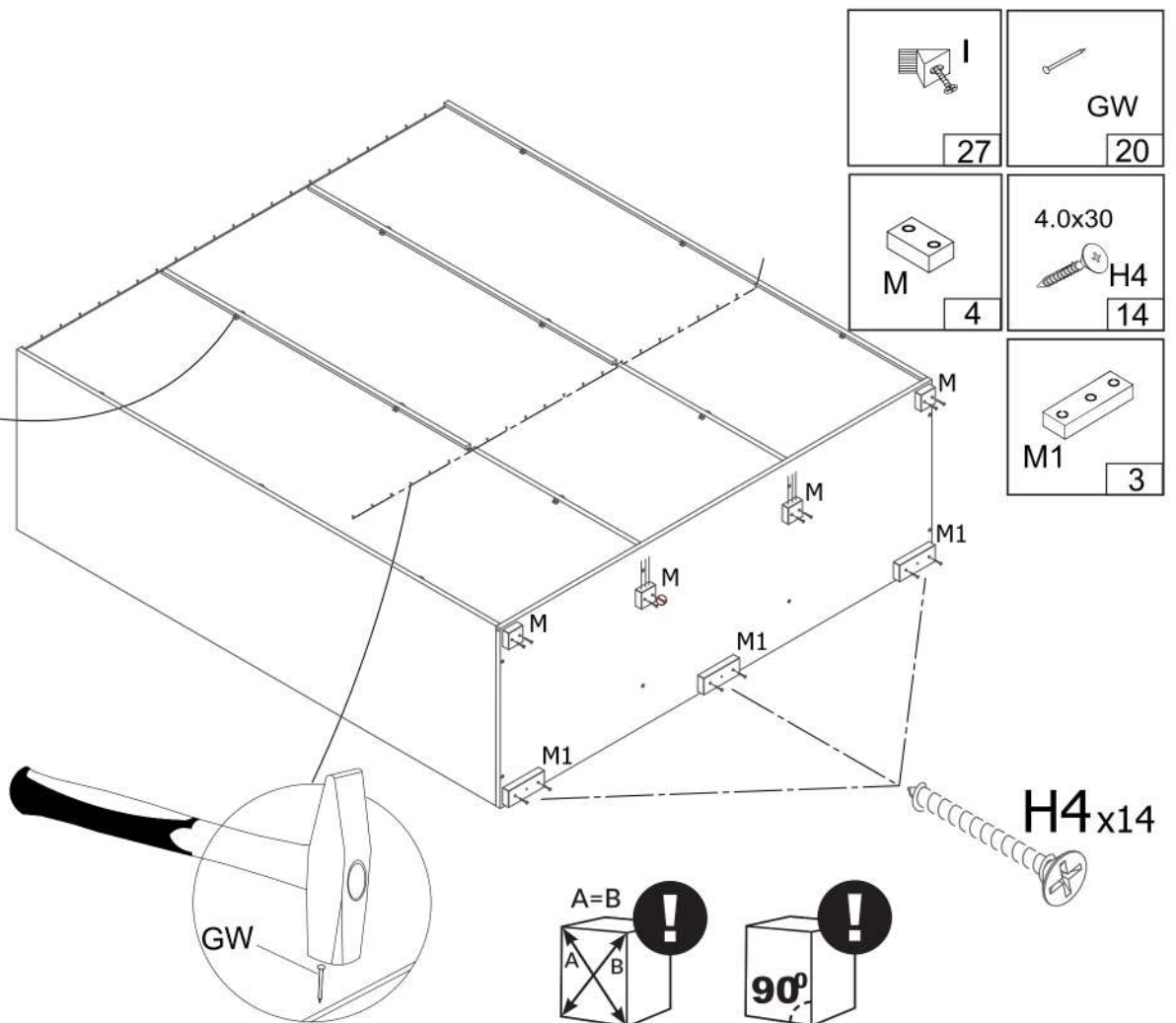
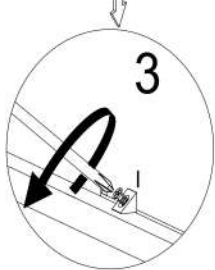
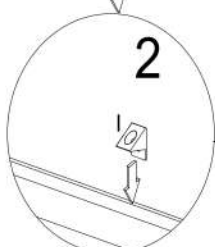
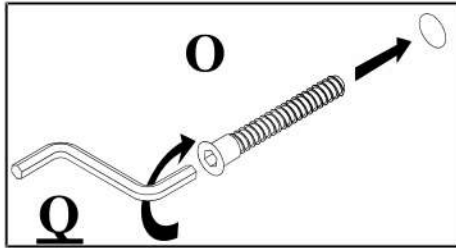
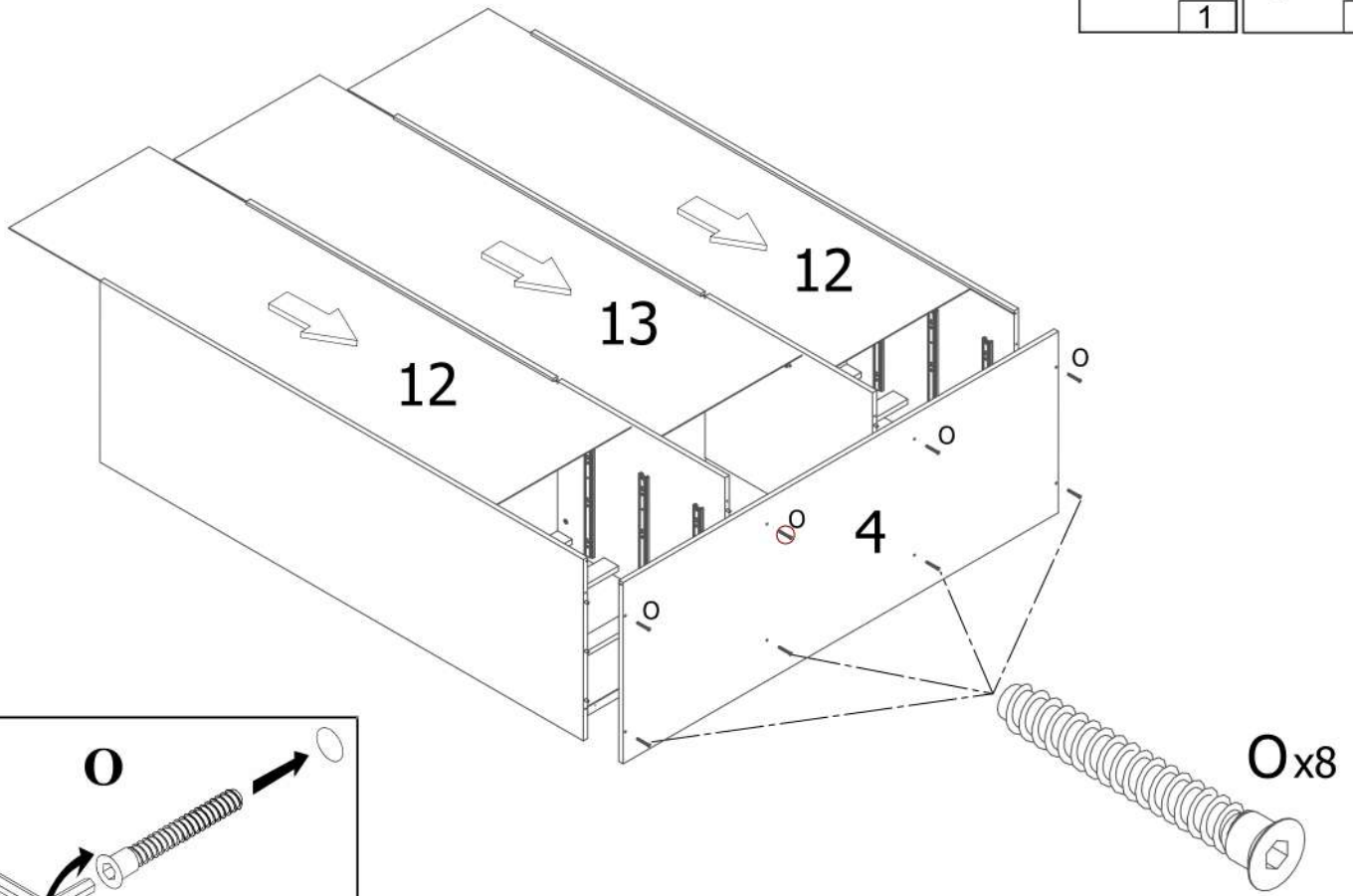
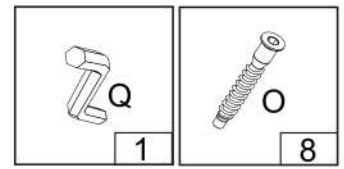


x4 pcs (2 pcs=28+23+27+31+20)  
(2 pcs=30+24+29+31+21)

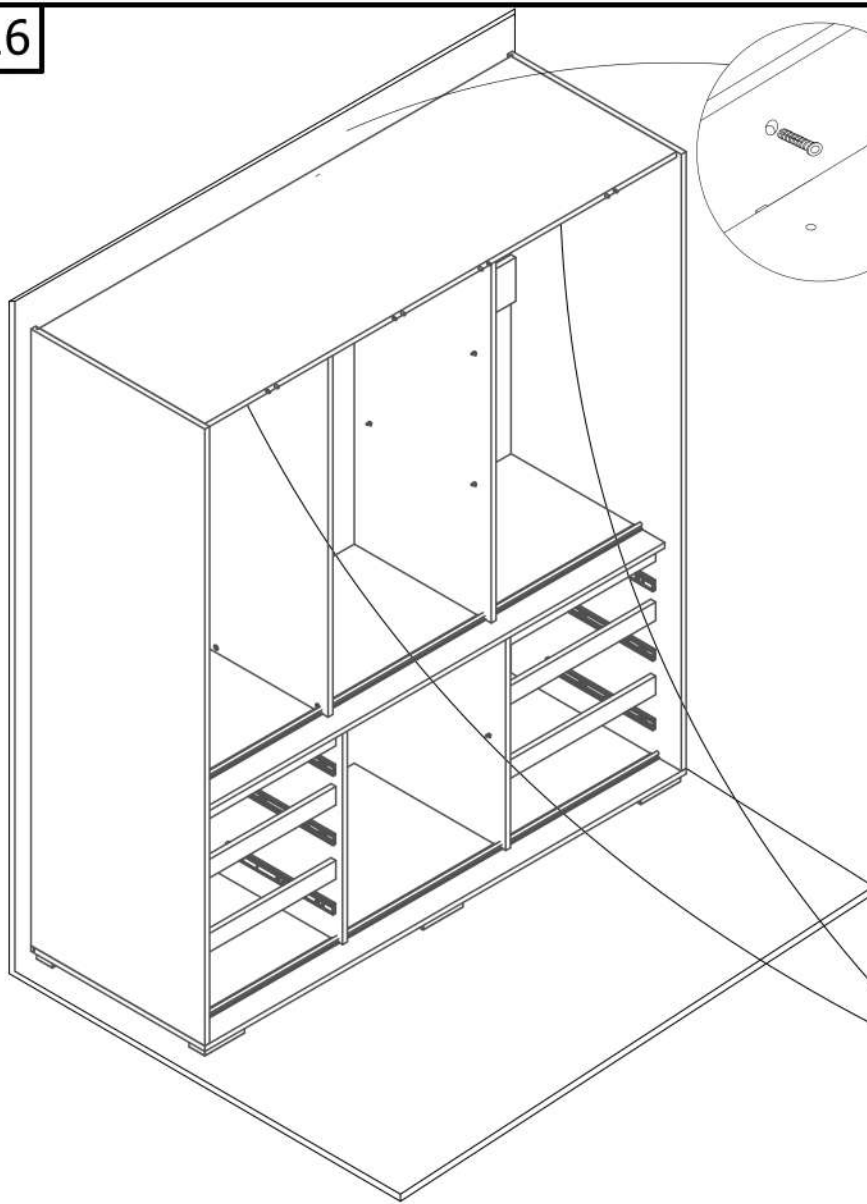







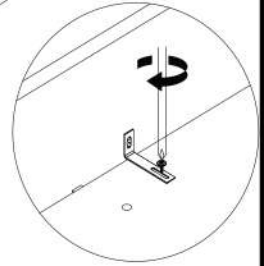
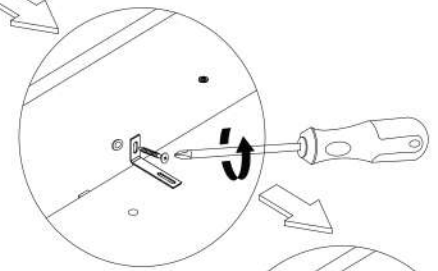




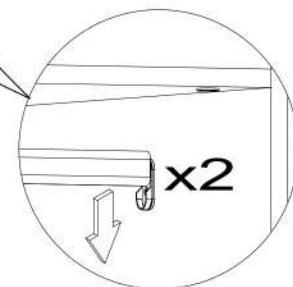




		
BS	KR	H
1	1	1

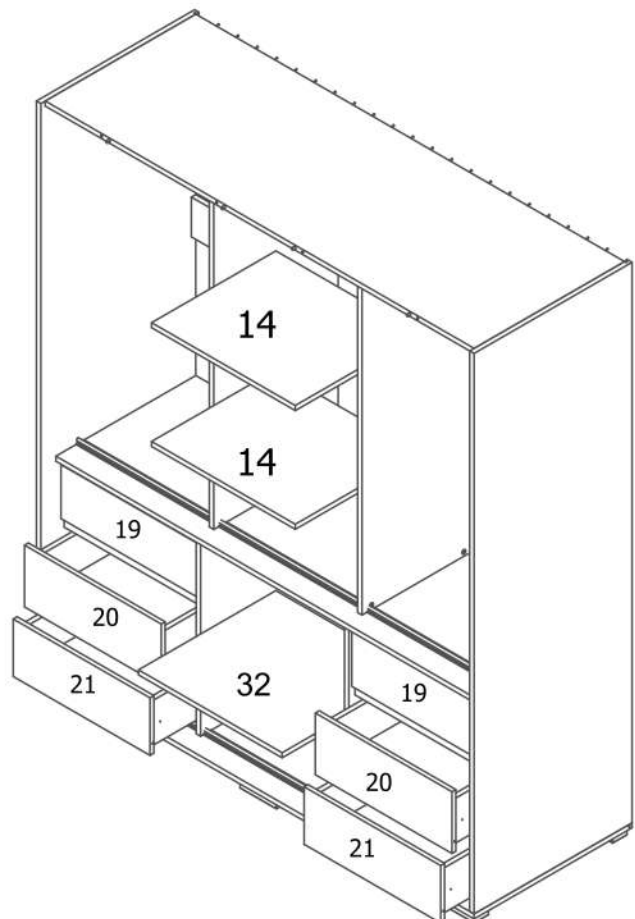
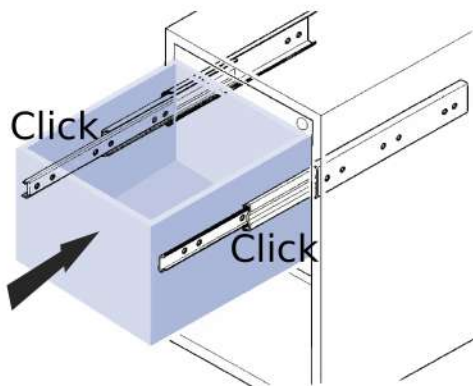


OPTION A

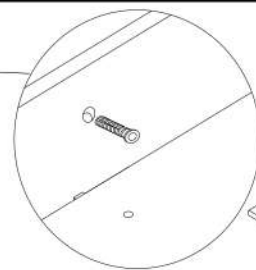
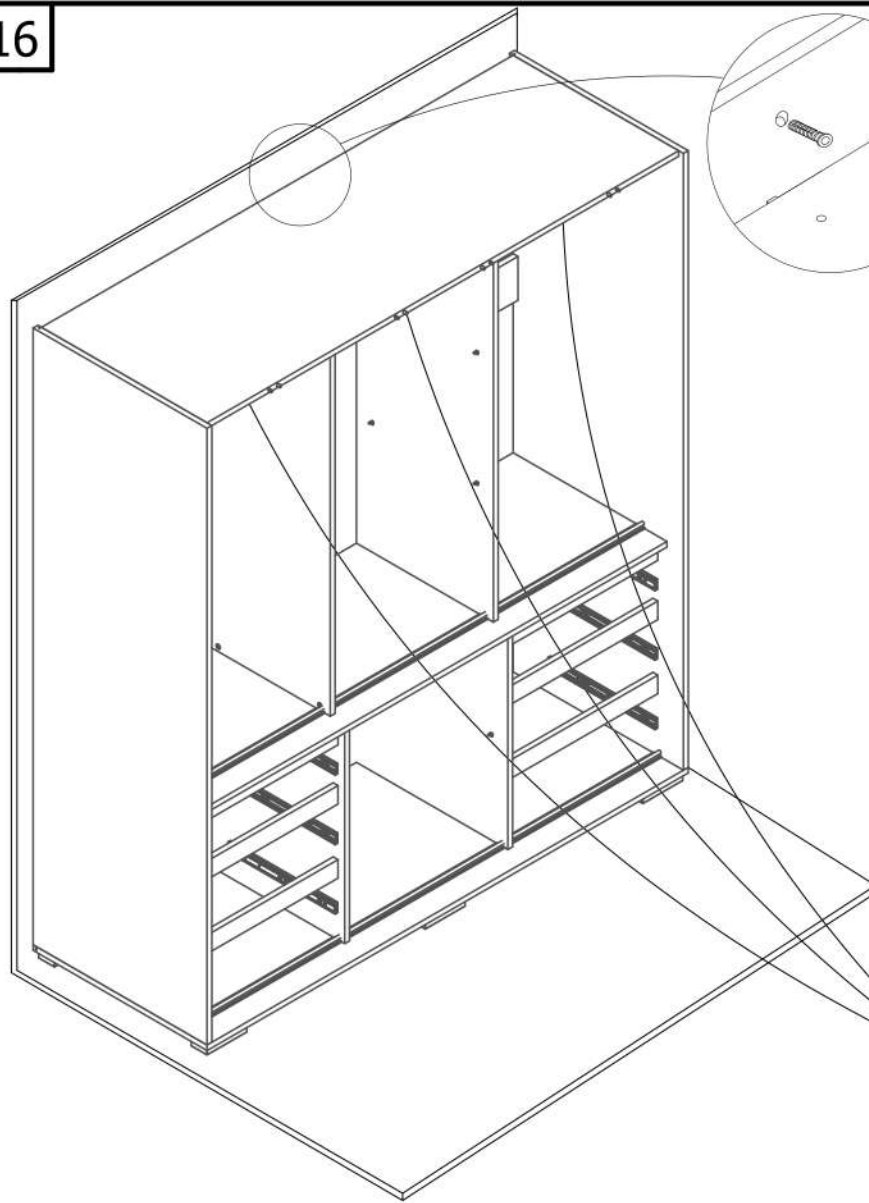





## OPTION A

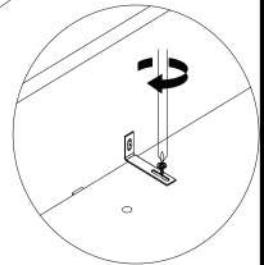
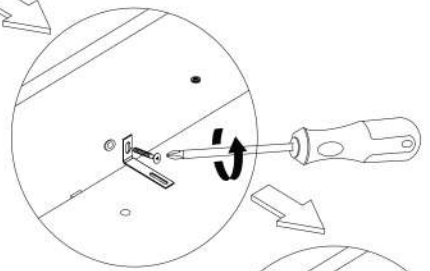
2 pcs hanging rail  
3 psc shelf



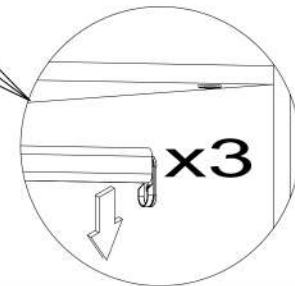




		
BS	KR	H
1	1	1

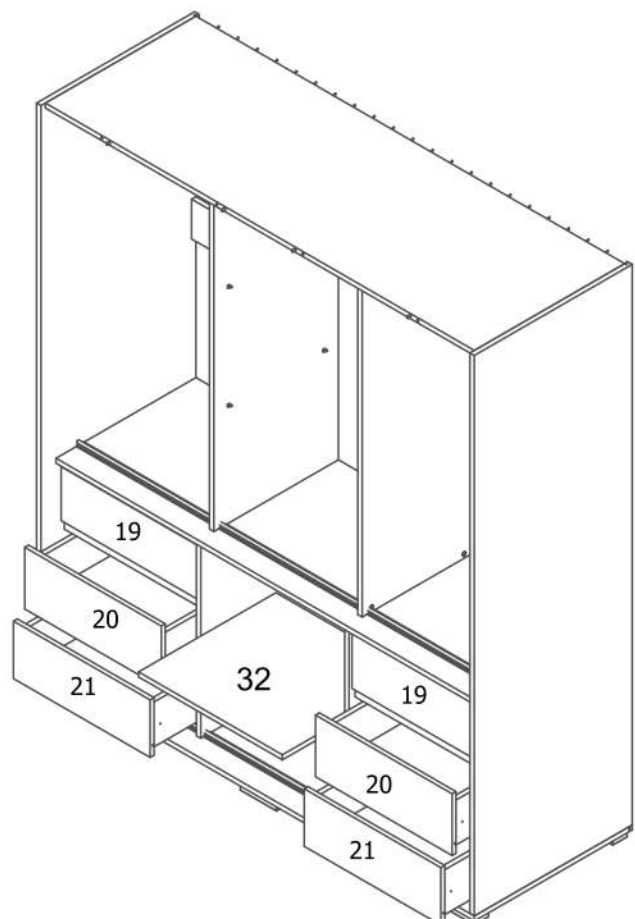
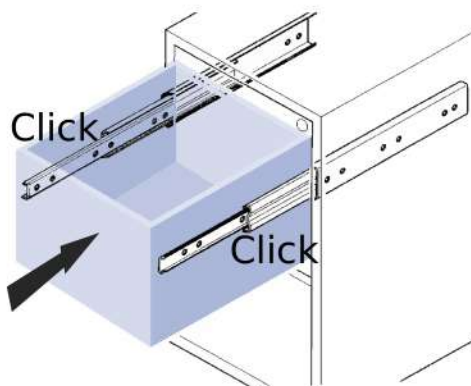


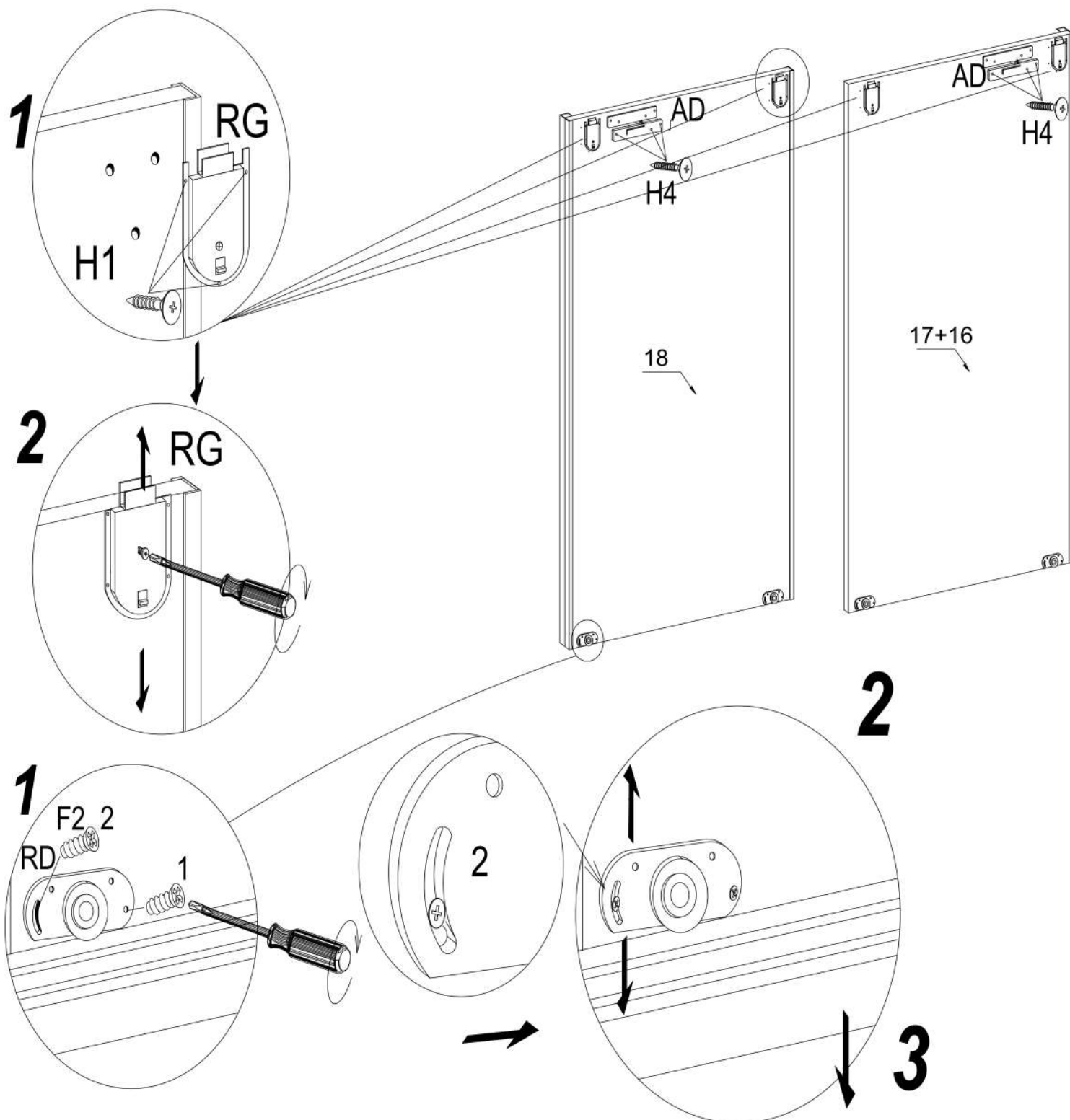
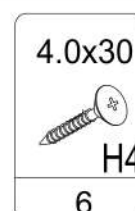
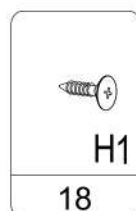
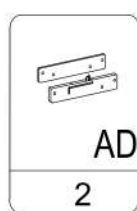
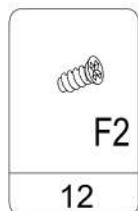
## OPTION B

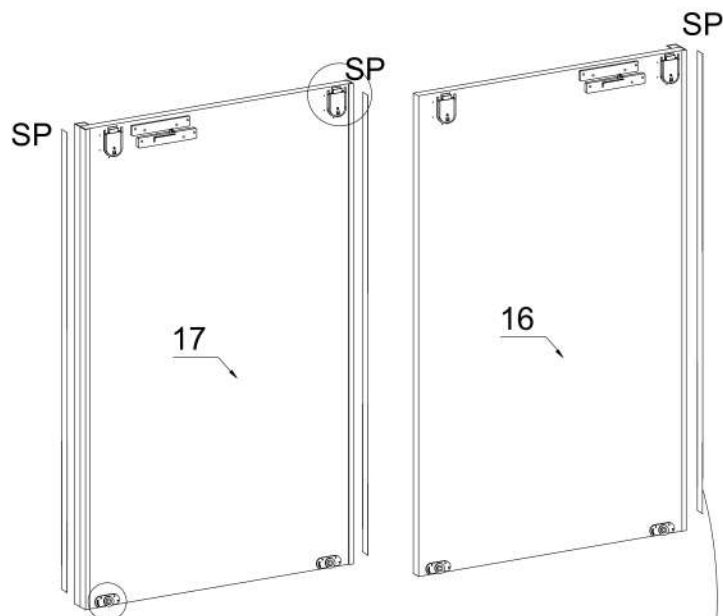
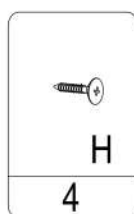
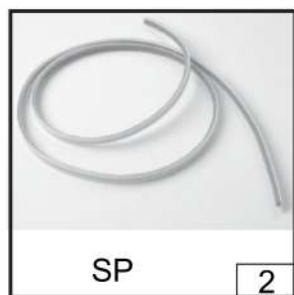


## OPTION B

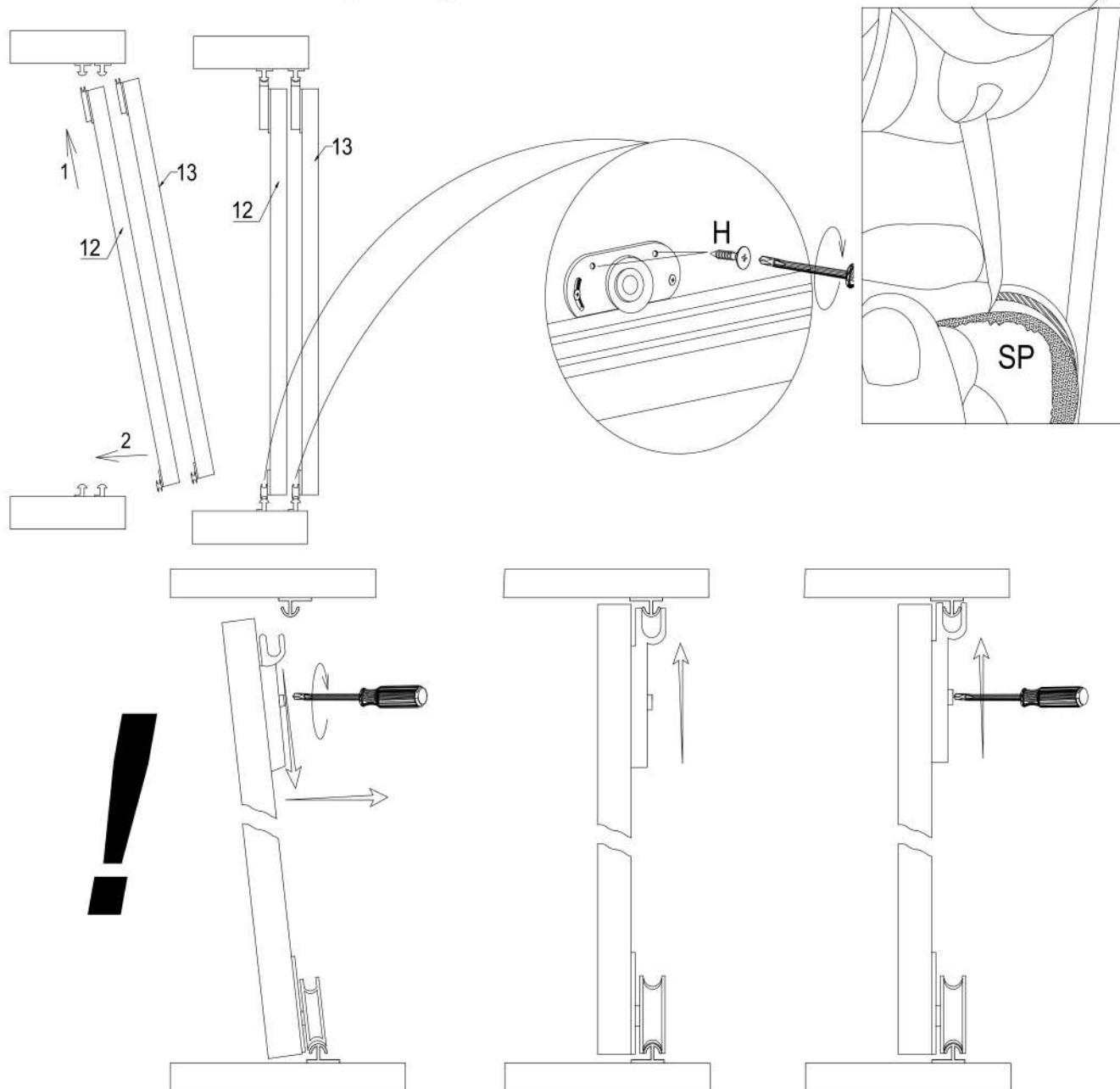
3 pcs hanging rail  
1 pcs shelf

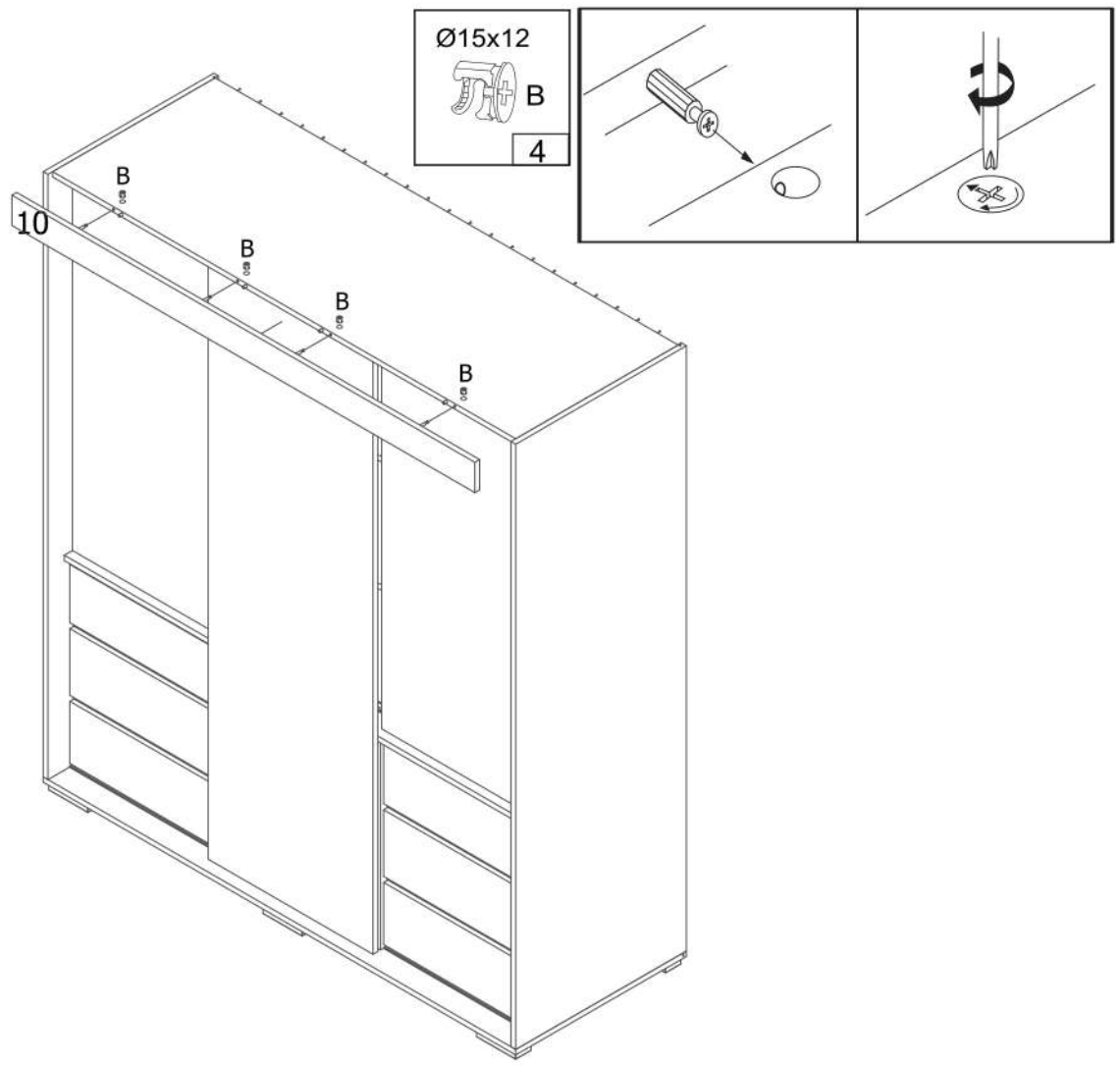




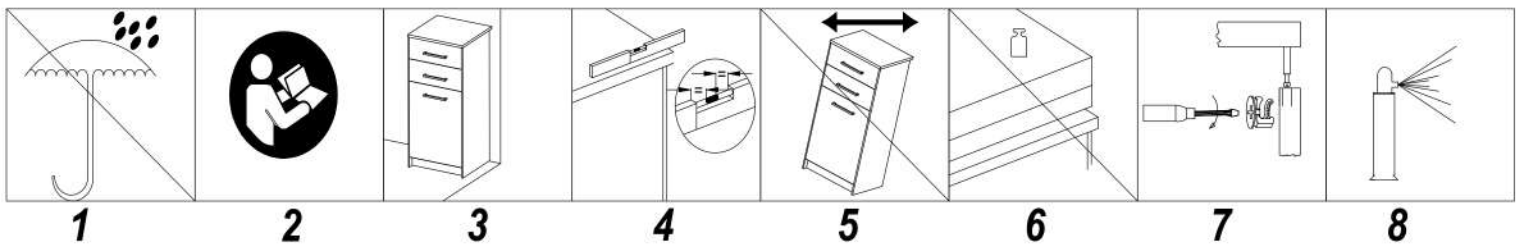


after adjusting the door, screw in the H screw



**GB**

1. Furniture should be used in rooms which are dry and protected against the harmful influences of weather conditions.
2. Furniture should be assembled in accordance with the assembly manual.
3. Furniture should be assembled as close as possible to its intended final location.
4. While positioning the furniture make sure it is levelled.
5. Furniture may be moved only by lifting and carrying it over when emptied of its contents. Pushing it over or pulling it along may ruin the furniture permanently. While carrying the furniture over it must be held by its vertical elements, i.e. side panels or legs. Furniture cannot be held by its horizontal elements prone to destruction, i.e. desktops, drawers, etc..
6. Furniture should not be overloaded as this may ruin it permanently.
7. While using the furniture, the state of the connections between its elements should be checked if necessary.
8. Furniture surface must be cleaned only with furniture maintenance formulas.



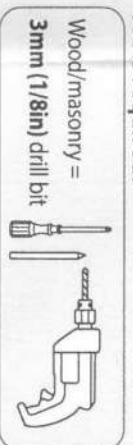
# INSTRUCTIONS Furniture Straps

Important: Read all INSTRUCTIONS carefully before installing this product. Please keep instructions for future reference.

## Parts Included:



## Tools required:



**Caution:** Always use a minimum of 2 straps on each piece of furniture.

All brackets must be securely screwed into a solid part of the furniture and a solid part (stud) of the wall.

For furniture items that are 122cm/48in or wider it is recommended to use at least 3 or 4 straps. For tall and heavy pieces of furniture use at least 2 straps at the highest point possible on or near the top surface of the furniture and attach to centre of wall studs.

For any stacked furniture make sure you install the manufacturer's provided attachment hardware to securely join the 2 pieces. If hardware is not available use mending plates available at most hardware stores.

## To Install:

1. Decide on most suitable anchor bracket configuration for furniture (see options A1, A2 and A3). To achieve configuration A3, to suit top of furniture mount, loosen strap on wall anchor bracket Y, twist loop inside-out and turn straps within anchor bracket, this allows for flipped anchor bracket position.

2. Mark positions on wall for wall anchor brackets Y - 8cm/3.25in above or below the furniture height.

**Caution:** For plasterboard walls (drywall), each strap must be attached to a separate wall stud. Furniture must be centred between the wall studs as closely as possible (B).

3. Mark lined-up positions for furniture anchor brackets X, see configuration, on either the top or back of furniture.

**Caution:** Furniture anchor bracket X, must be installed into framework or sturdy and solid part on back of furniture. When anchoring tallboys or drawer sets, ensure that screw holes will not interfere with the normal function of the drawer.

4. Slide furniture out of the way.

5. Position the furniture anchor brackets X onto furniture. Mark and drill pilot screw holes so anchor brackets are aligned with the previous marks.

6. Screw the anchor brackets into the furniture using screws X (included).

7. Take the wall anchor brackets Y, mark guide positions for the pilot screw holes about 8cm/3.25in above or below the top of the height of the furniture. Drill pilot holes with a 3mm (1/8in) drill bit. For masonry walls use suitable wall plugs (not included).

8. Screw wall anchor brackets Y into wall studs or masonry wall using the screws Y (included).

9. Slide furniture back into position.

10. Pull strap on wall anchor bracket Y tightly ensuring there is no slack in the strap (C). Do this for all straps.

**NOTE:** Keep extra cord length tucked away out of reach from children. Regularly check that straps are tight and securely anchored.

**Warning:** There is no substitute for proper adult supervision. This product is only a deterrent. Discontinue use when child is able to remove it. It is important to firmly discourage children from climbing on furniture at all times.

