

Modellname / Model name / Nom du modèle / Modellnamn  
 Nome modello / Název modelu / Modelnaam / Ime modela  
 Número Modelo / Modell neve / Название модели /  
 Názov modelu / Ime modela / Denumire model /  
 Наименование на модела / Nazwa modelu

Modellnummer / Number / Numéro du modèle / Numero  
 Номер на модела / modello / Číslo modelu / Modell száma  
 Eíslo modelu / Številka modela / Număr model / Broj modela  
 Modelnummer / Numer modelu

# Vancouver II

# 314



**D** Bitte lesen Sie diese Montageanleitung gut durch, da wir für Fehler, die durch falsche Montage entstehen, keine Haftung übernehmen!

**GB** Please read these installation instructions through carefully as we cannot accept any liability for faults occurring as a result of incorrect installation!

**CZ** Přečtěte si prosím pozorně tento návod k montáži, aby jste předešli chybám vzniklých špatnou montáží, za které neručíme!

**F** Veuillez lire attentivement cette notice de montage, car nous déclinons toute responsabilité en cas d'erreurs découlant d'un montage erroné !

**I** Prego leggere attentamente le istruzioni per il montaggio, poiché decliniamo qualsiasi responsabilità per difetti derivanti da un montaggio errato

**BG** Ёол, д'дочлїлїлї внщєрїлїлно ёонїгїснїлї снїлїдуецїс, лїлї сїгїно нї нонсє оїлїоводнонїлї зї улїлїс, вїзнсєнїлїс в лїлїдїлївсї нї додїлїлїн ёонїгїс.

**NL** Leest u alstublieft deze montagehandleiding goed door, voor fouten door verkeerde montage zijn wij niet verantwoordelijk.

**PL** Proszę uważnie zapoznać się z instrukcją montażu, ponieważ nie ponosimy odpowiedzialności za niewłaściwy montaż.

**HR** Molimo vas da pažljivo proučite uputstva za satavljanje, jer ne snosimo odgovornost za pogreske nastale zbog ne odgovarajućeg sastavljanja.

**HU** Kérjük, olvassa el figyelmesen ezt az összeszerelési útmutatót, mert a helytelen összeszerelésből a dódó hibákért nem vállalunk felelősséget!

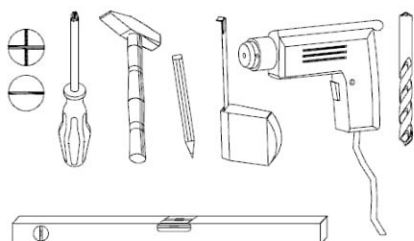
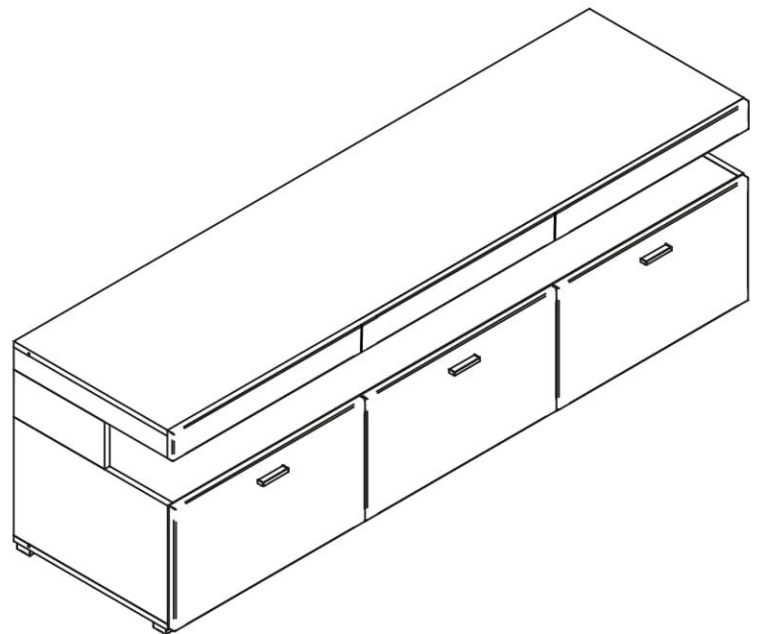
**SK** Prosíme, dobre prečítajte si tento návod na montáž, pretože nepreberáme žiadne ručenie za chyby, ktoré vzniknú na základe chybnej montáže!

**SLO** Preberite ta navodila za montažo, ker mi ne prevzemamo odgovornosti za napake, ki nastanejo kot posledica napacne montaže!

**RO** Vă rugăm să citiți cu atenție aceste instrucțiuni de montaj deoarece nu preluăm garanția pentru defecte ce apar datorită unui montaj incorect!

**RUS** Пожалуйста, внимательно ознакомьтесь с данной инструкцией по монтажу, поскольку мы не несем ответственности за ошибки, причиной которых является неправильный монтаж.

**S** Läs noggrant igenom dessa monteringsanvisningar. Vi övertar inget ansvar för felaktig montering!!



festziehen / tighten / Затягнєтєр / serrer / stringere utåhnut / vasttrekken / zategnuti / strångere / zwiázac / szorosan meghúzni / pevne dotiahnut / trdno prilegniti / затянуть / dra át

eindrücken / press in / enfoncer / ribattere / zatlačit / Вкарайте / Benyomni / stlacit / vlisniti / tryck in / introducere prin apasare / вдвїтї

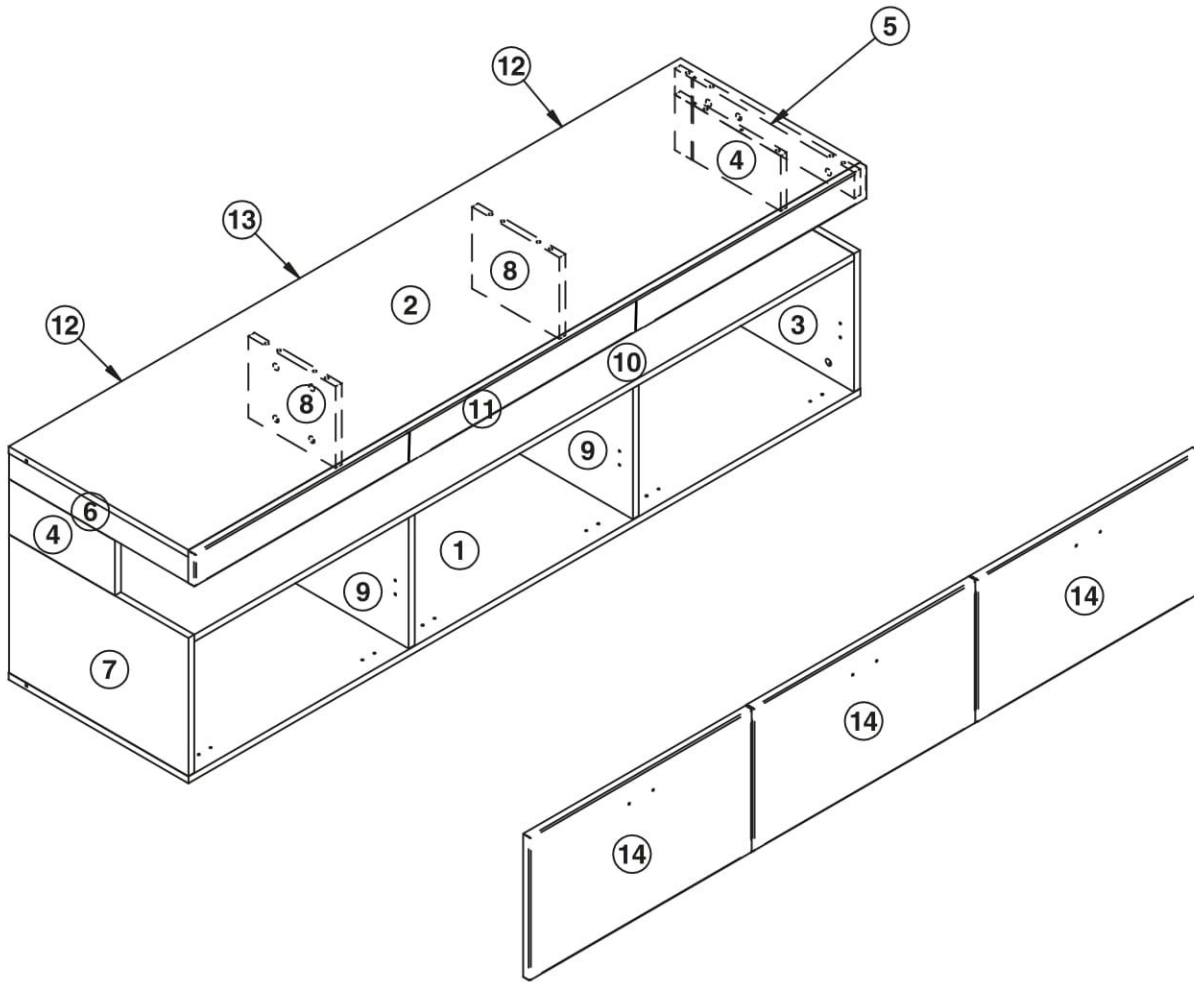
ausmessen / measure / mesures / misurare / opmeten / izmeriti / miara / kimérni / izmeriti / masurare / измерить / změřit / Измерете / mät upp

drücken / press / presser / stisknout / HaTNCHeTe / vtisniti / nasinac / drukken / pritisnuti / nacisnac / pritisniti / нажать / zarazit / Забїйте (с чук) / zabiti / Introducere prin bătãie / забїтї

einschlagen / hammer in / bevern / sla in / frapper au marteler / infossare / Zabit' / zarazit / Забїйте (с чук) / zabiti / Introducere prin bătãie / забїтї

Drehen - wenden / Proszę odwrócić / Keren - omdraaien / Girare - Ruotare / Okrenuti - ubnuti / Retourner - renverser / Turn over - turn around / Otočte - obratite / Обърнете - завъртєт / Obrnite list / Intoarceli / rotiti / Vrid runt - vänd / прокрутїть - повернїть

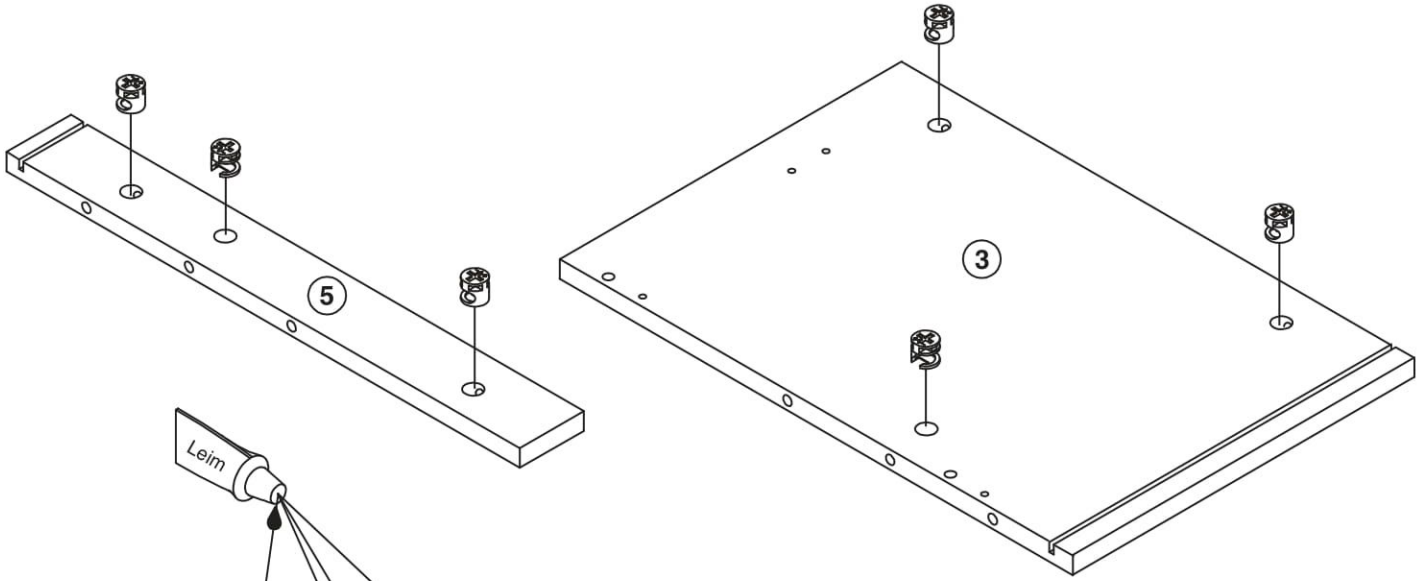
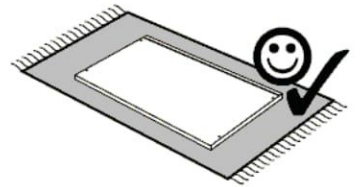
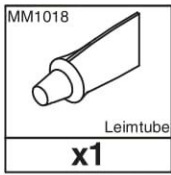
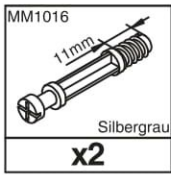
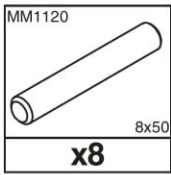
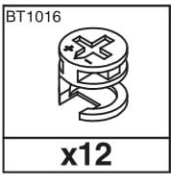
# Bauteile Type: W9.314.07



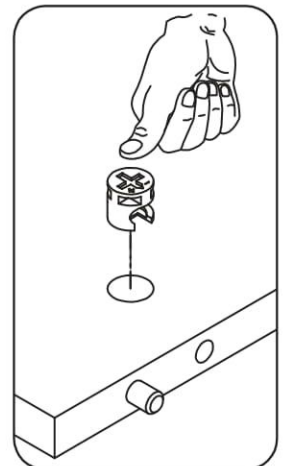
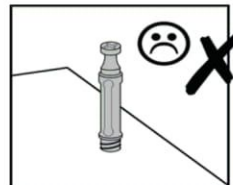
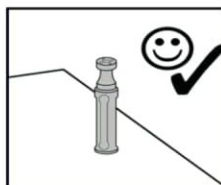
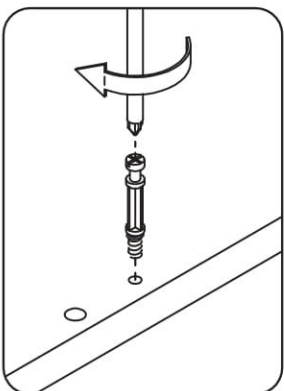
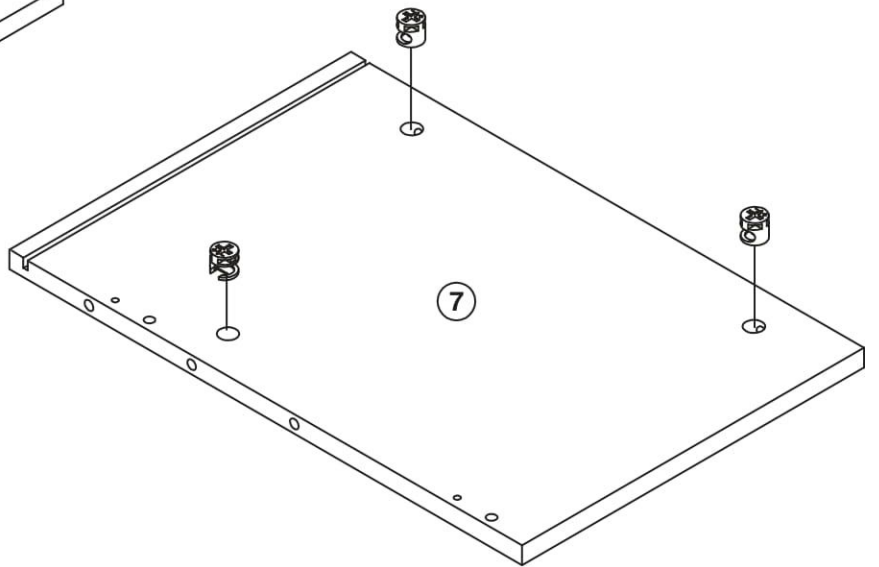
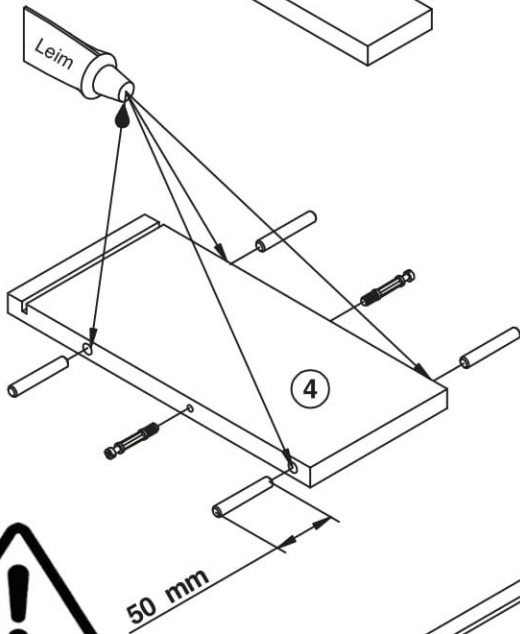
## Beschlagteile Type: W9.314.07

<p>BT1016</p> <p><b>x32</b></p>	<p>MM1016 1mm Silbergrau</p> <p><b>x32</b></p>	<p>MM1121 8x35</p> <p><b>x28</b></p>	<p>BT1305 K=0</p> <p><b>x6</b></p>	<p>BT1304 H=2</p> <p><b>x6</b></p>	<p>MM1046 3,5x13</p> <p><b>x54</b></p>	<p>MM1120 8x50</p> <p><b>x8</b></p>
<p>MM1070 7x1,5</p> <p><b>x6</b></p>	<p>BT50210 BA=64</p> <p><b>x3</b></p>	<p>MM1010 4x30</p> <p><b>x6</b></p>	<p>BT50101</p> <p><b>x6</b></p>	<p>MM1048 2,7x20</p> <p><b>x15</b></p>	<p>BT50103</p> <p><b>x6</b></p>	<p>BT50481 60x40x20</p> <p><b>x6</b></p>
<p>MM1039 4x20</p> <p><b>x12</b></p>	<p>BT50202 φ 20</p> <p><b>x32</b></p>	<p>BT50253</p> <p><b>x6</b></p>	<p>BT50484 grau</p> <p><b>x3</b></p>	<p>MM1018 Leimtube</p> <p><b>x3</b></p>		

1.

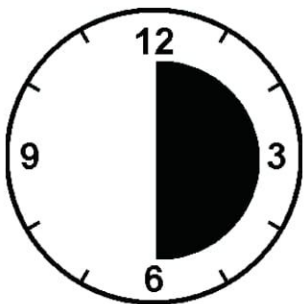
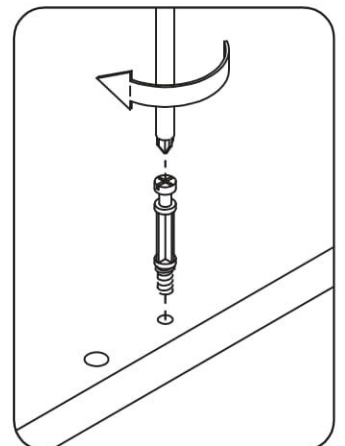
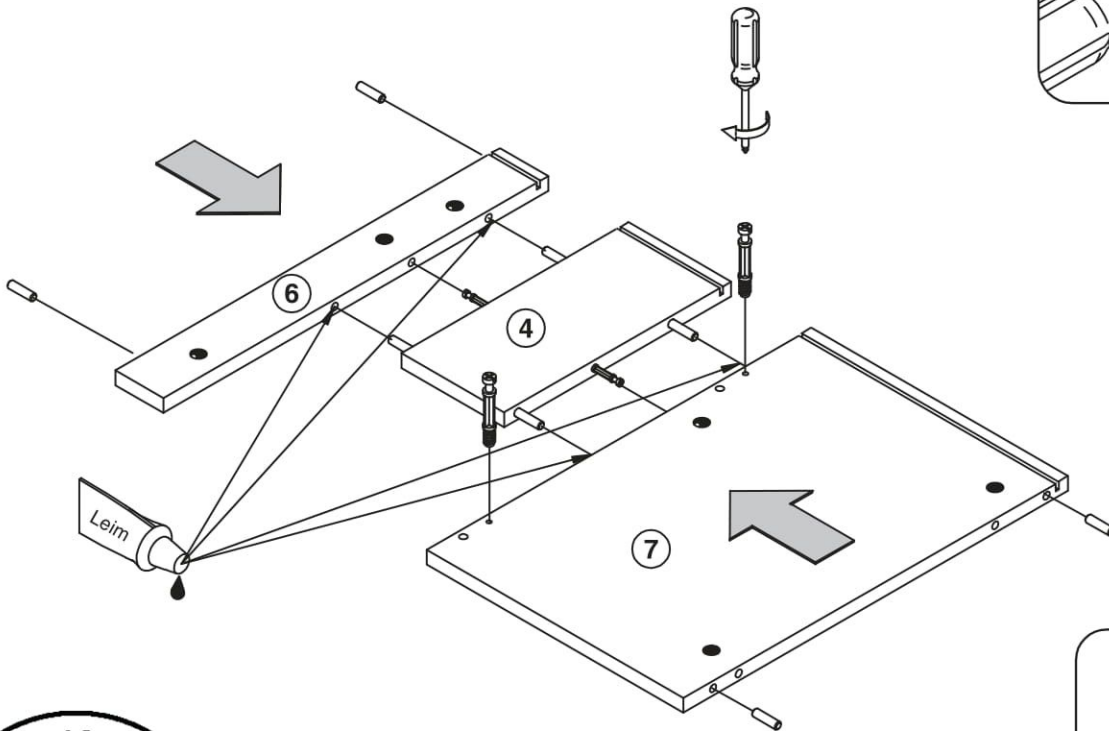
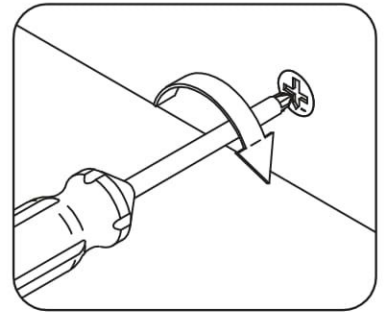
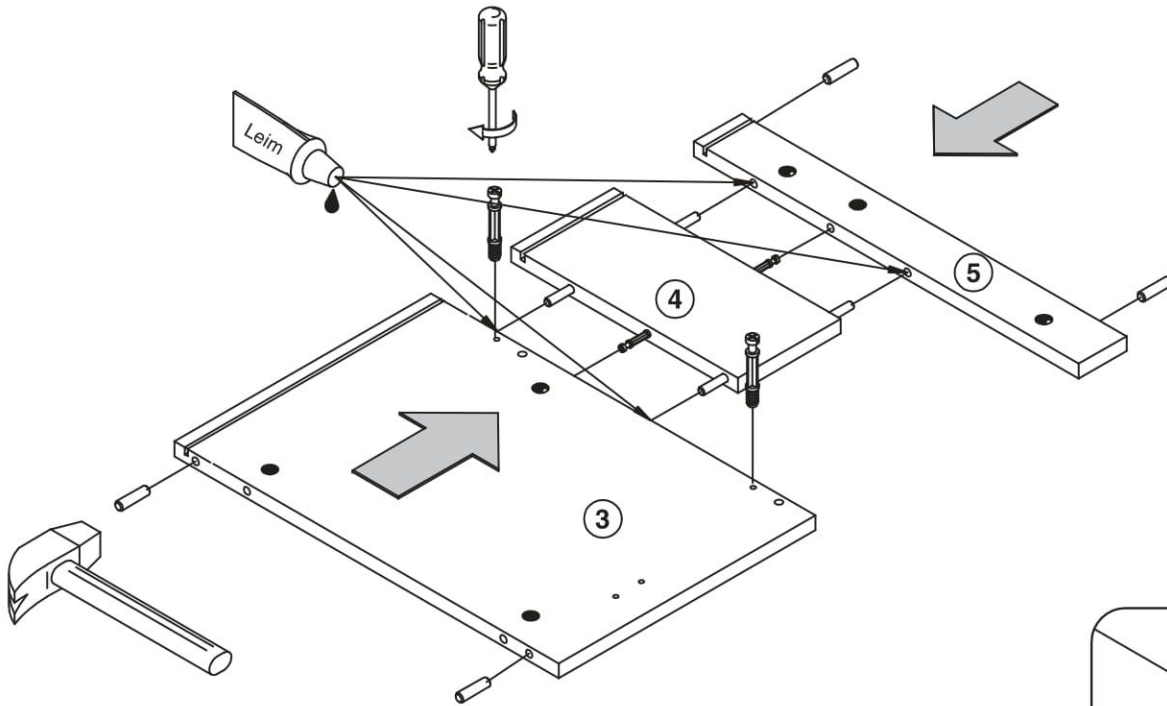
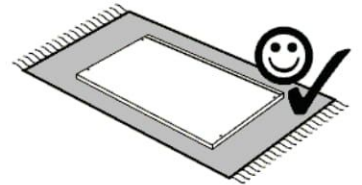


x2

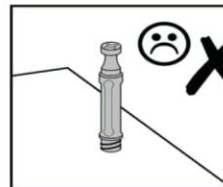
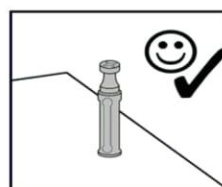


# 2.

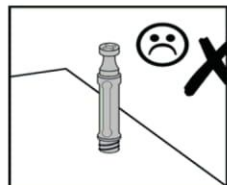
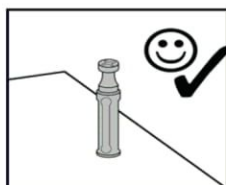
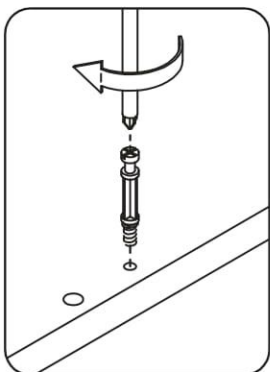
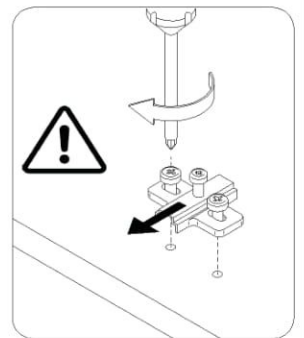
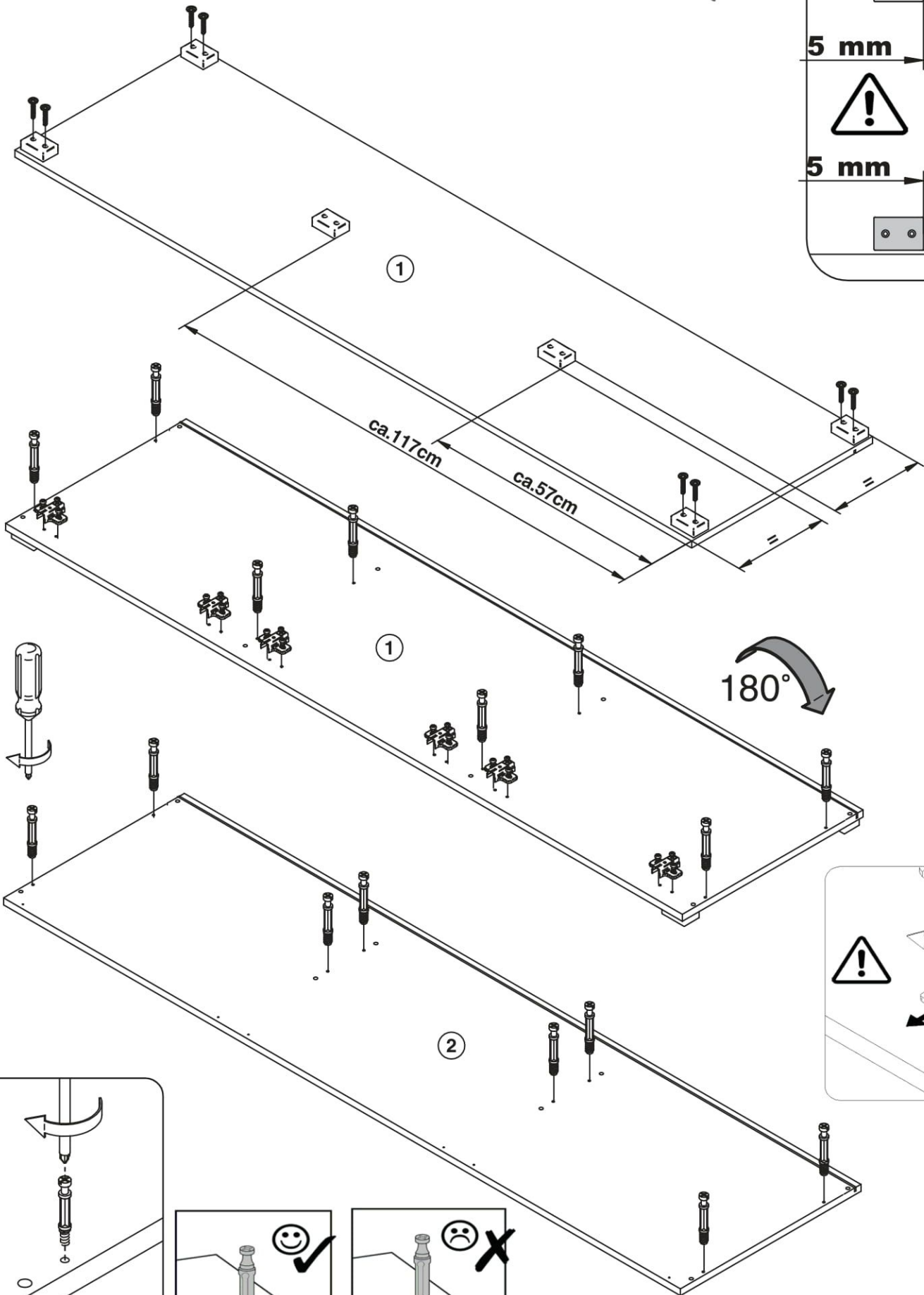
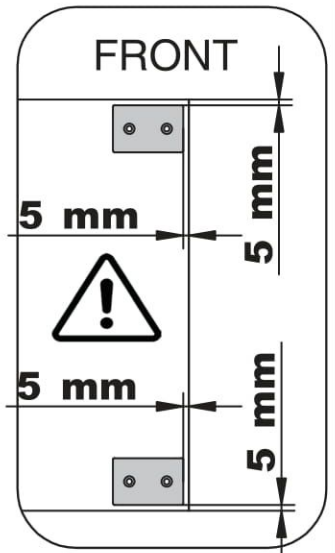
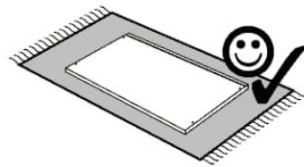
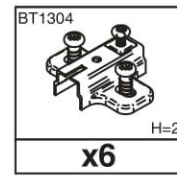
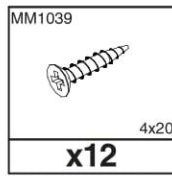
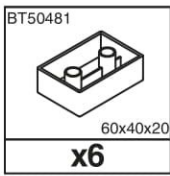
MM1016 11mm Silbergrau <b>x4</b>	MM1121 8x35 <b>x8</b>	MM1018 Leimtube <b>x2</b>
---	-----------------------------	---------------------------------



**30 min.**

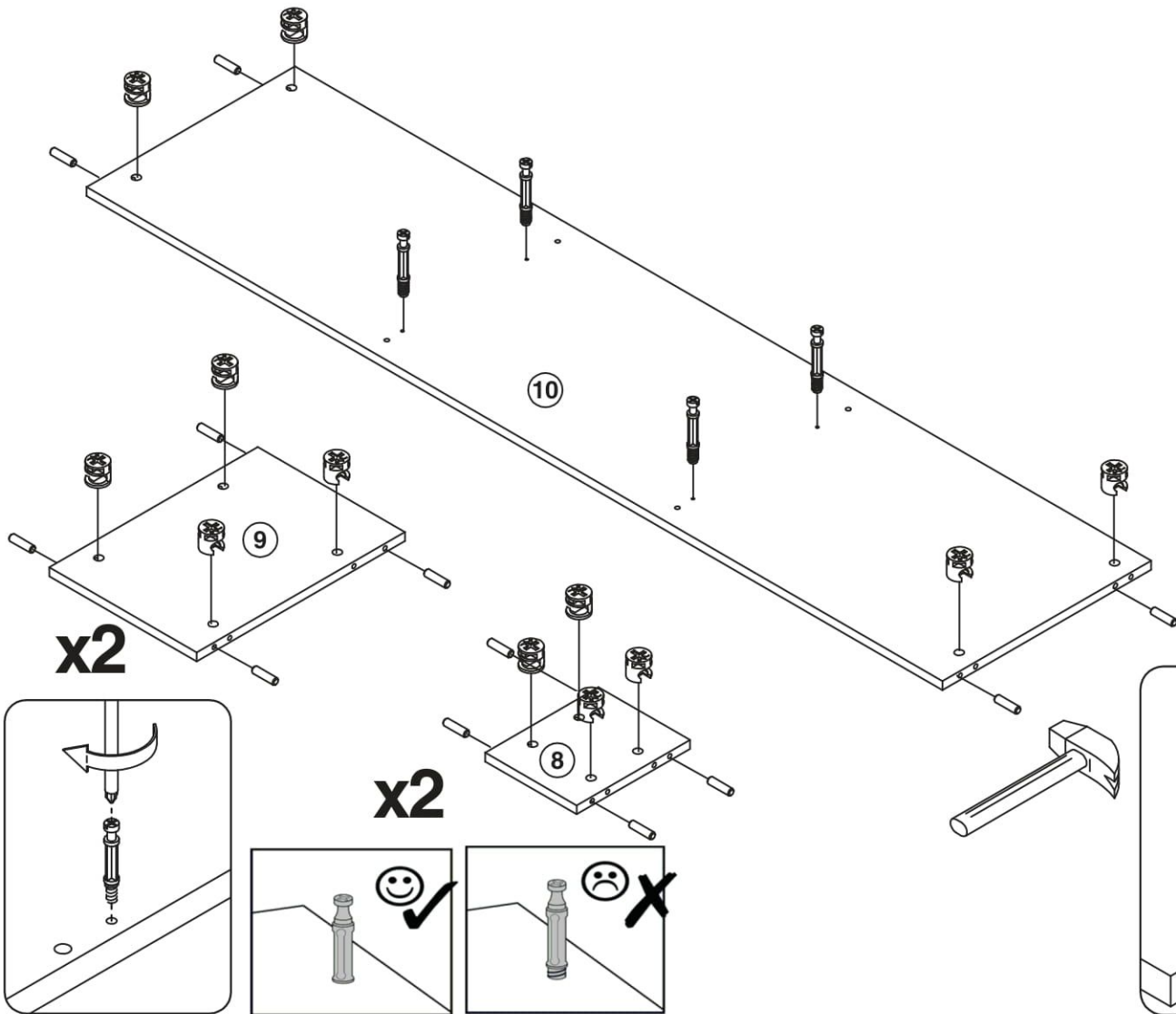
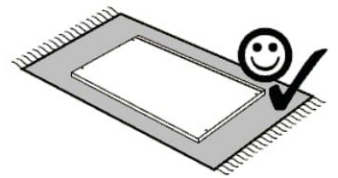


3.



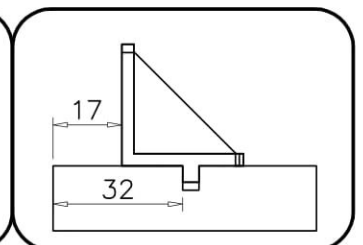
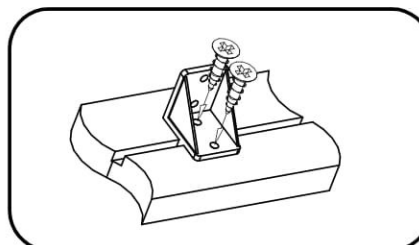
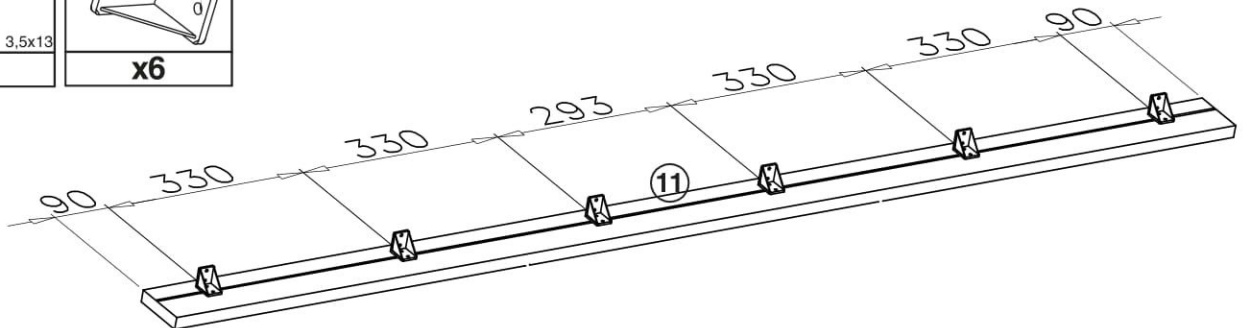
4.

MM1016 11mm Silbergrau <b>x4</b>	BT1016 <b>x20</b>	MM1121 8x35 <b>x20</b>
---	----------------------	------------------------------



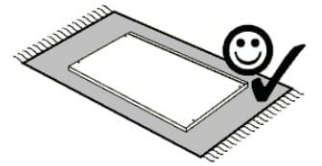
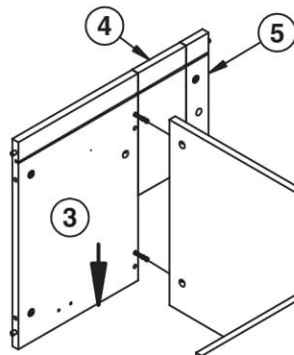
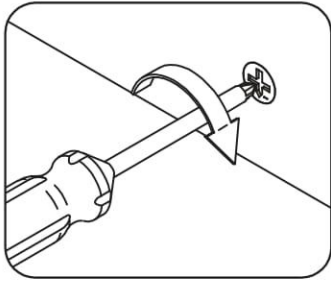
5.

MM1046 3,5x13 <b>x12</b>	BT50253 <b>x6</b>
--------------------------------	----------------------

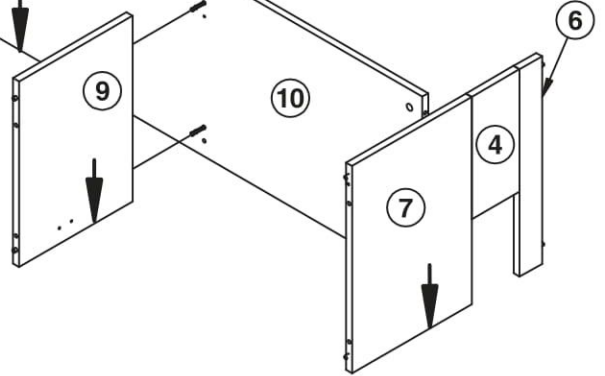
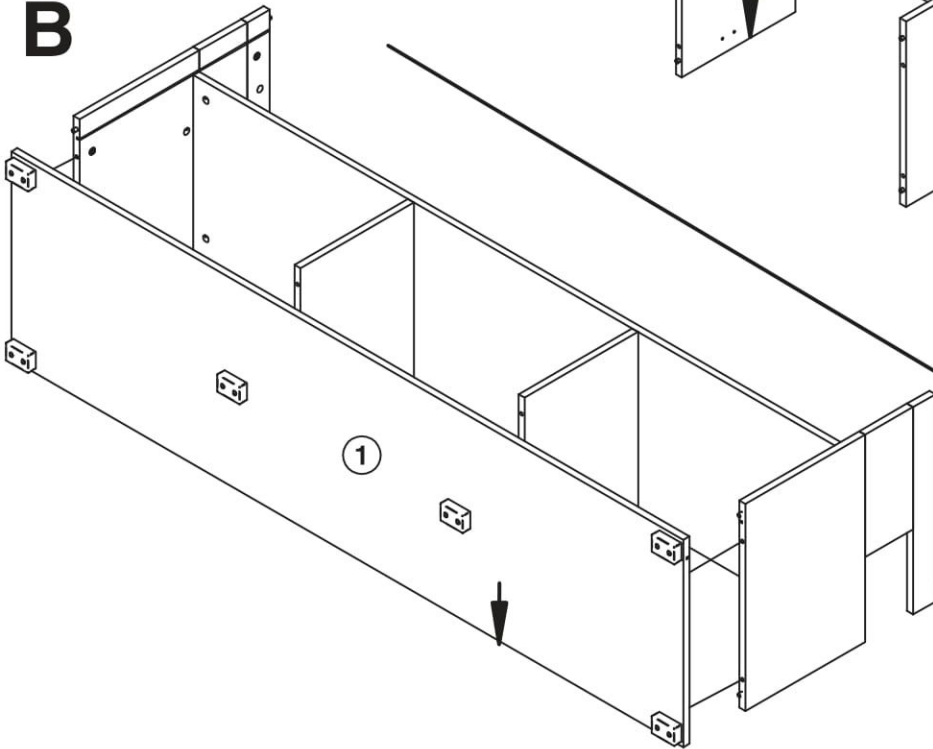


6.

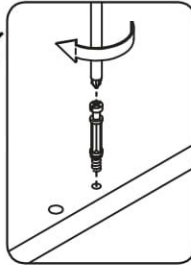
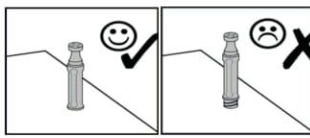
A



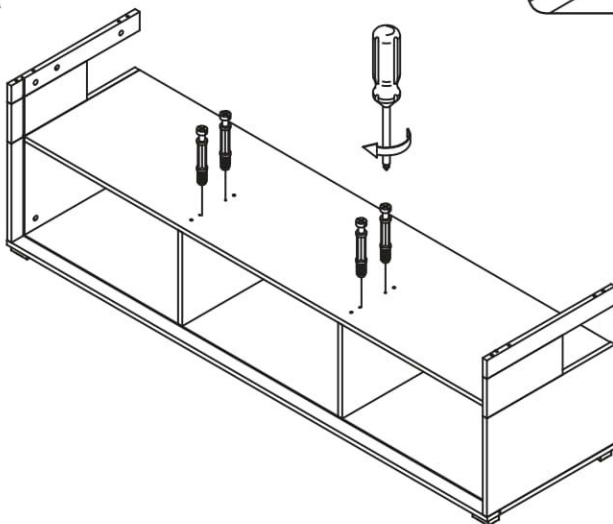
B



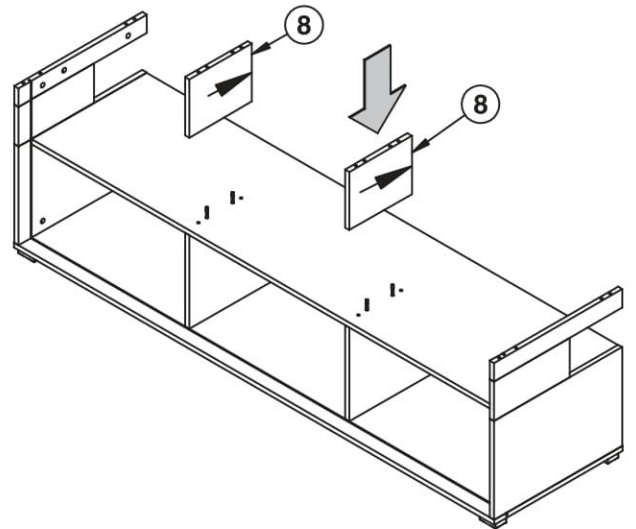
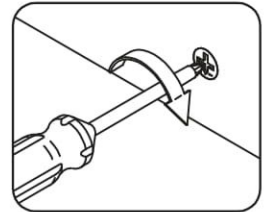
7.



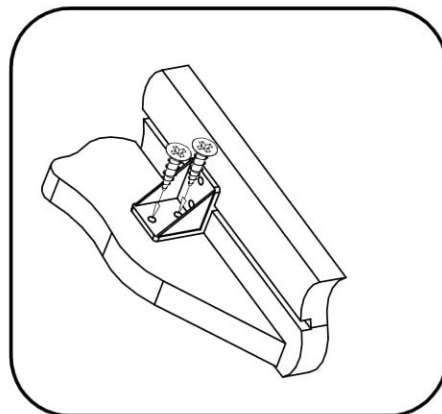
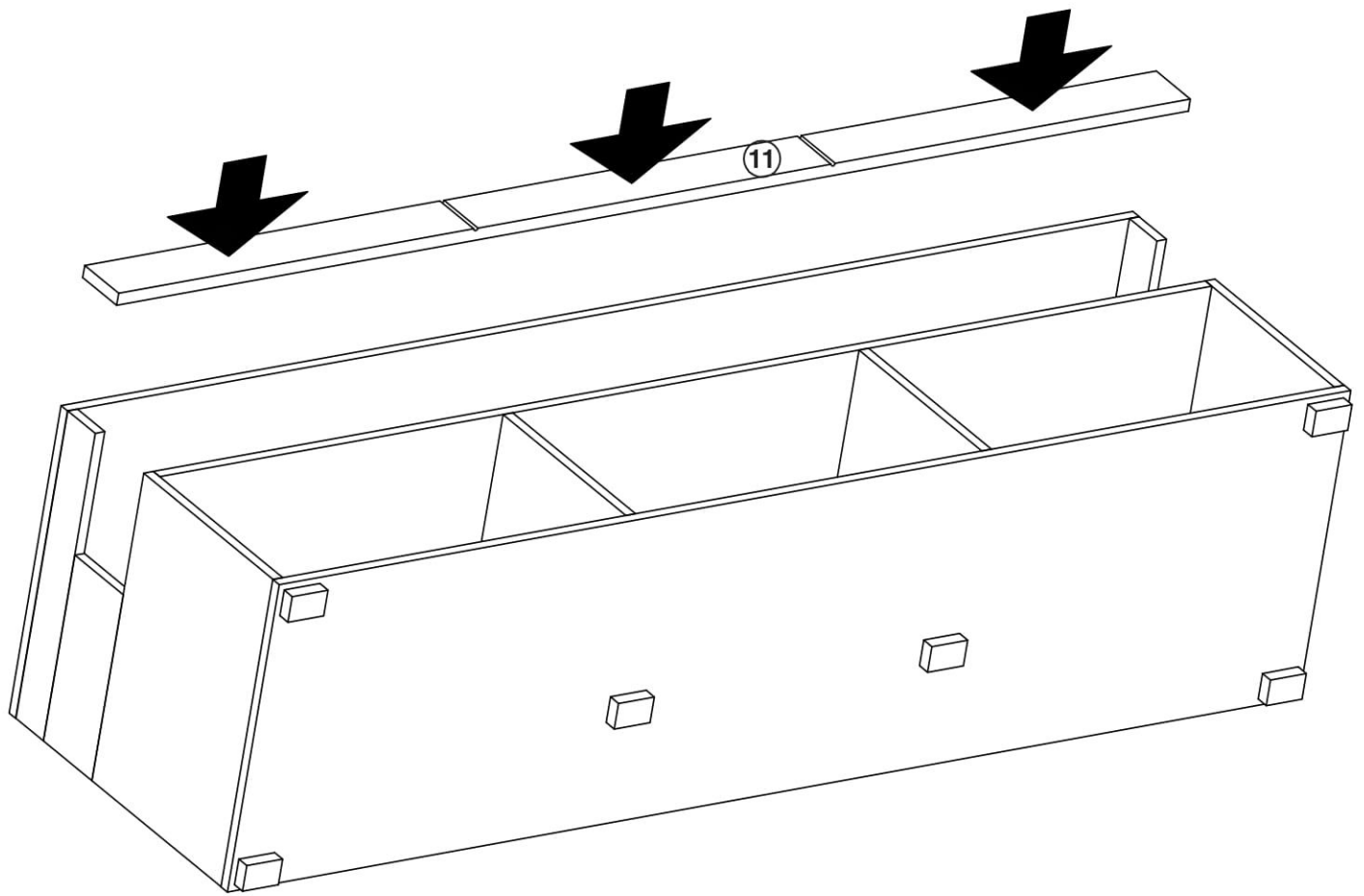
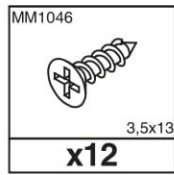
A

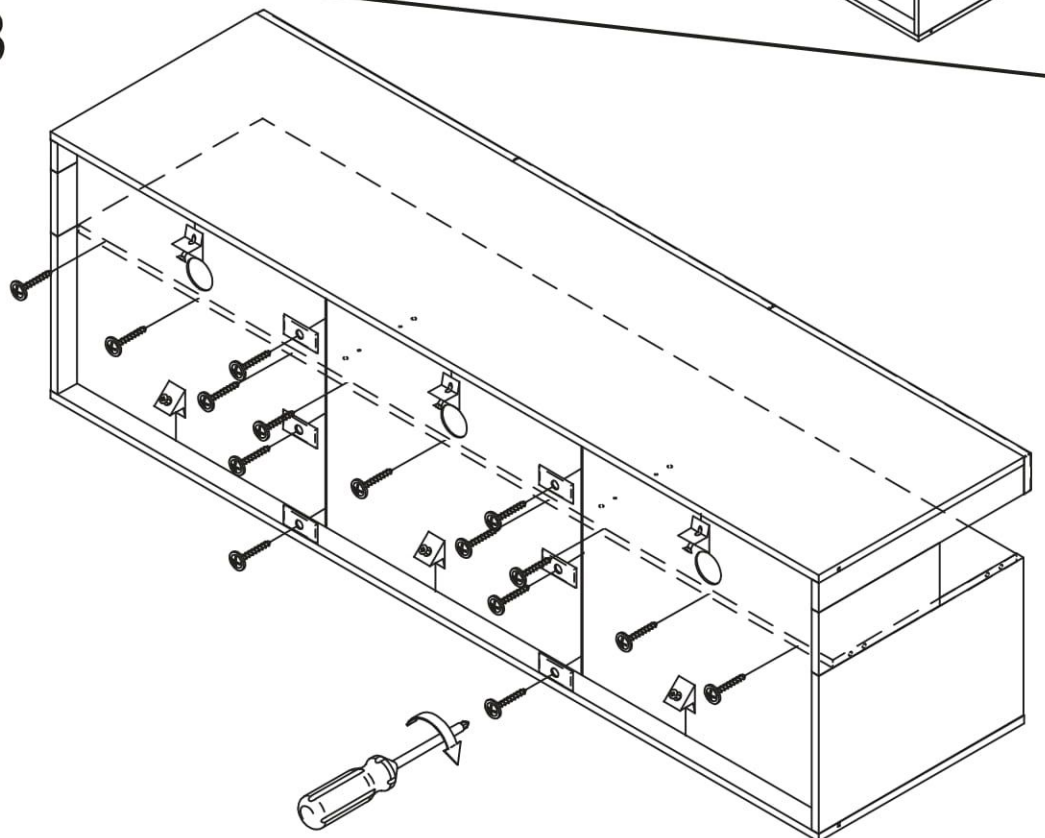
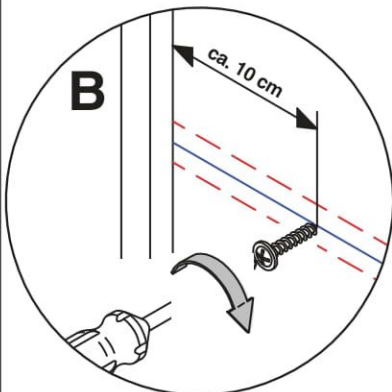
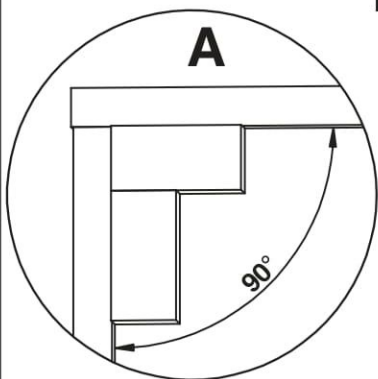
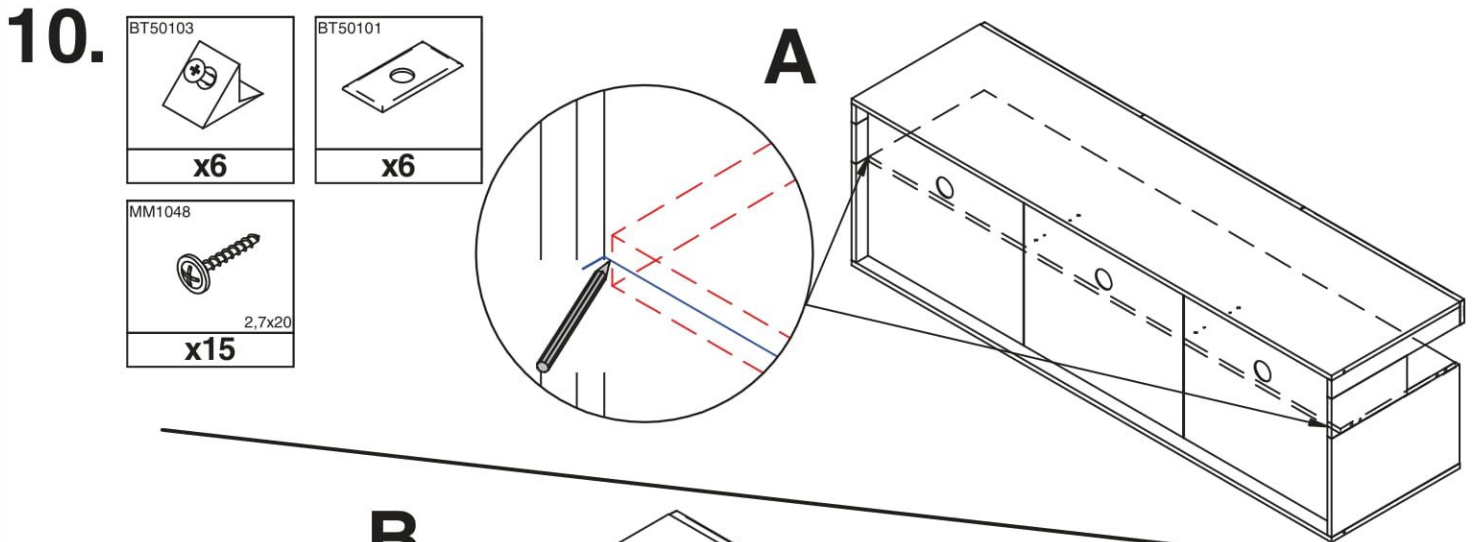
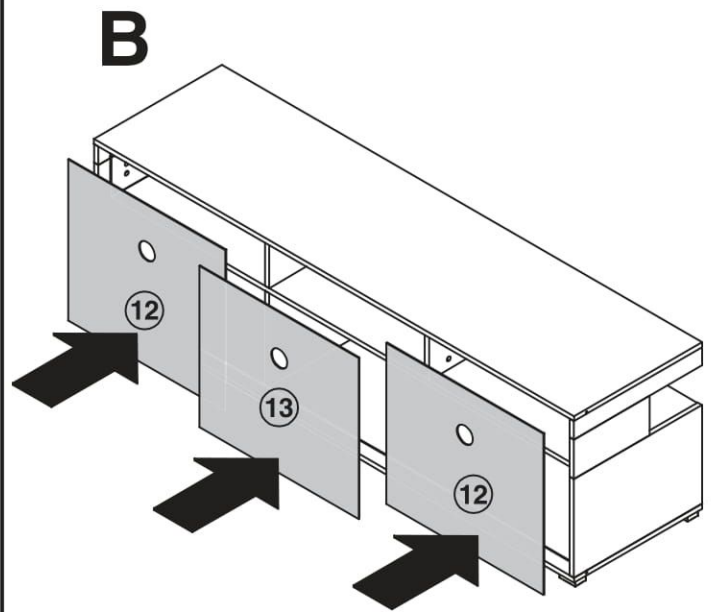
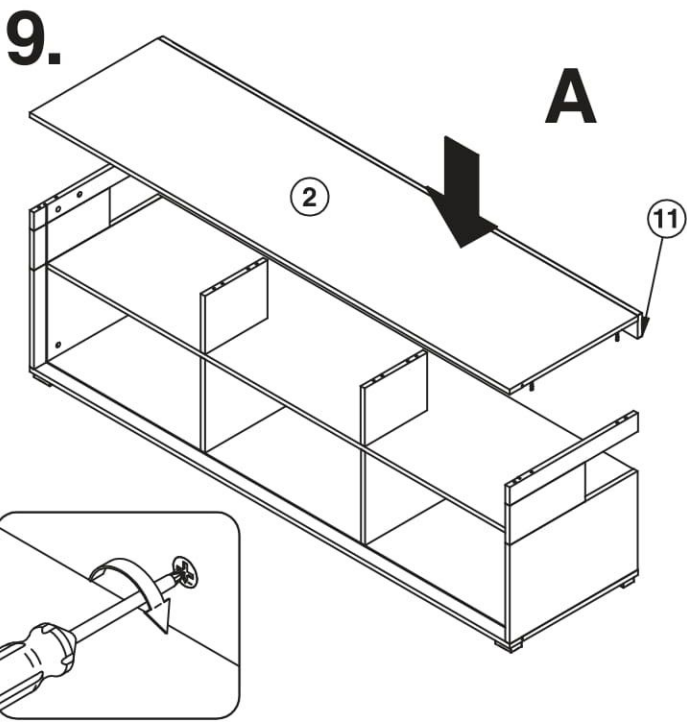


B

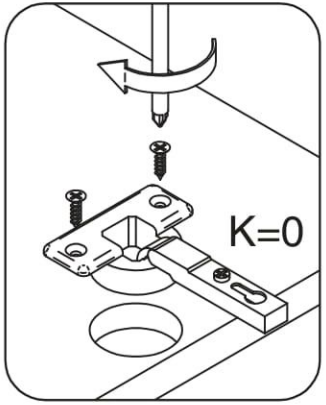
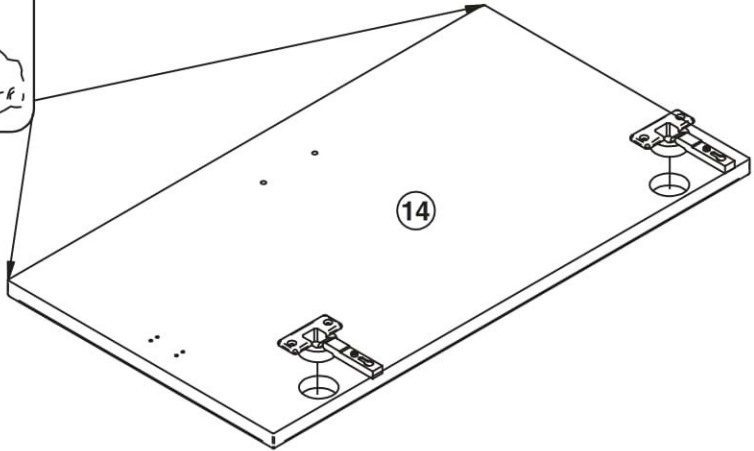
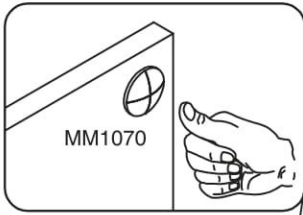
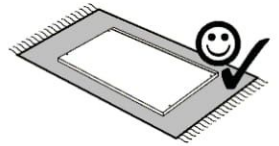
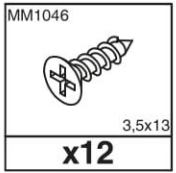
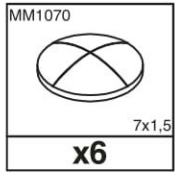
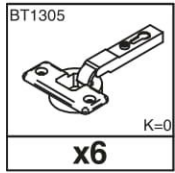


8.

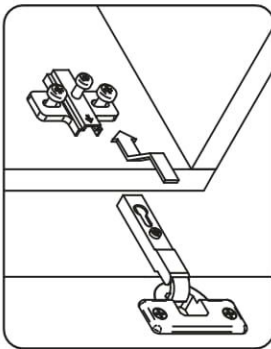




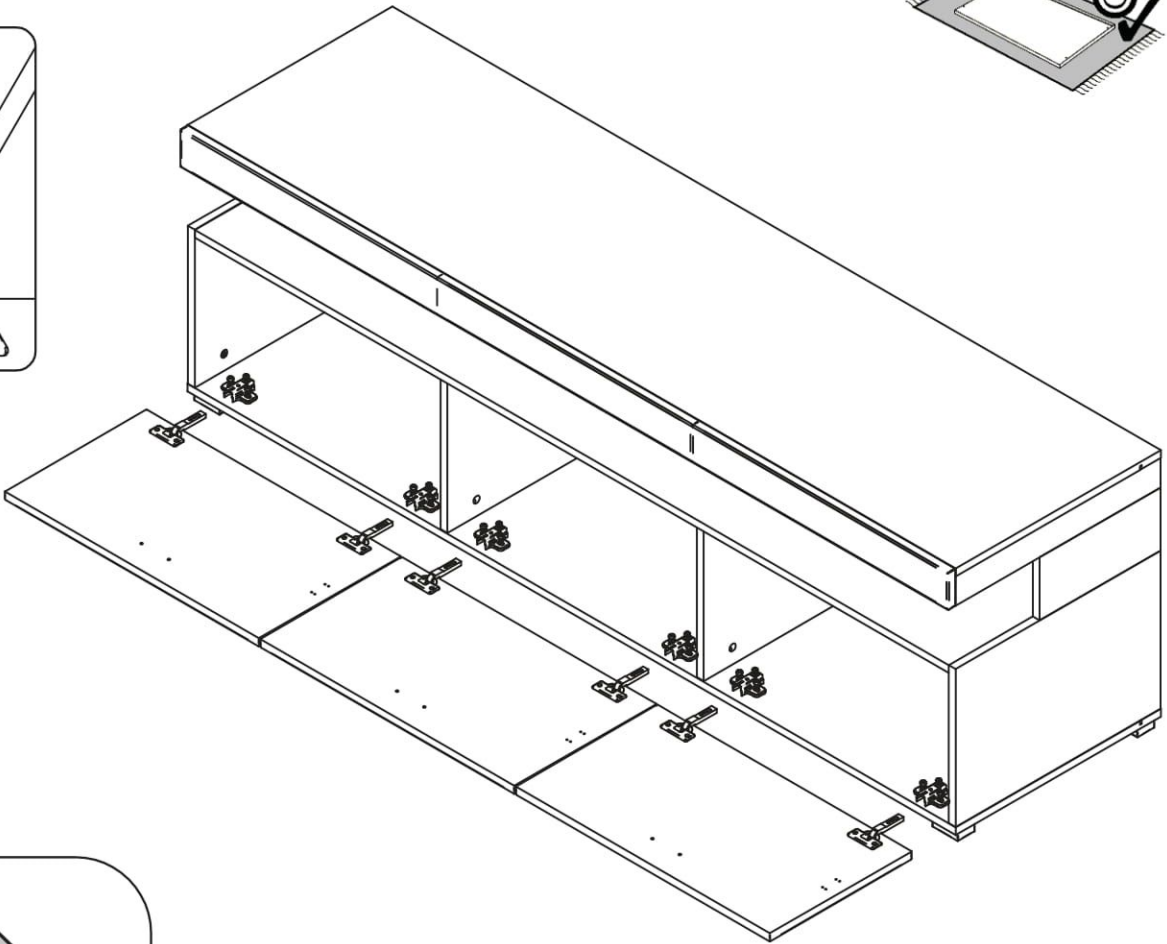
# 11.



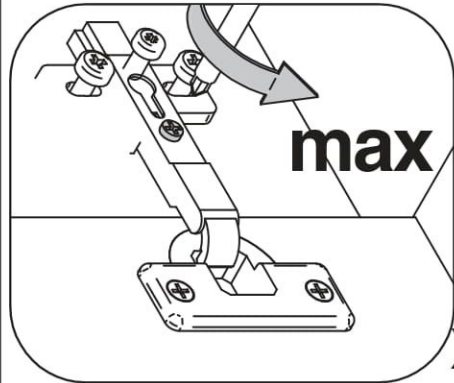
# 12.



## A

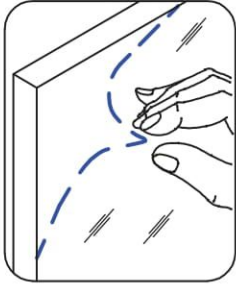
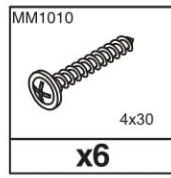
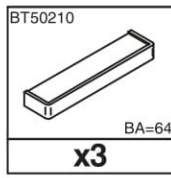
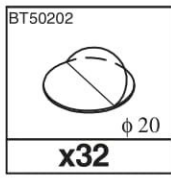
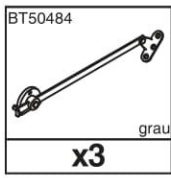
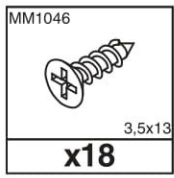


## B

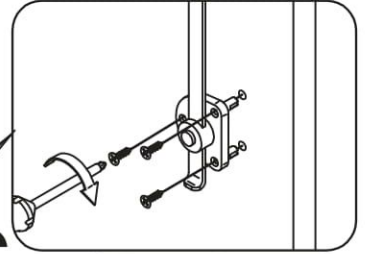
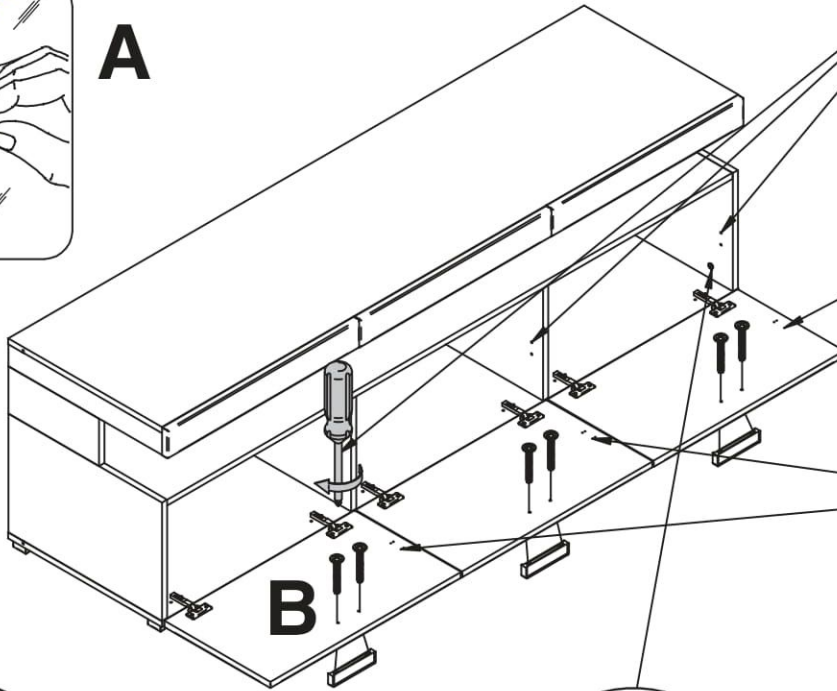


x6

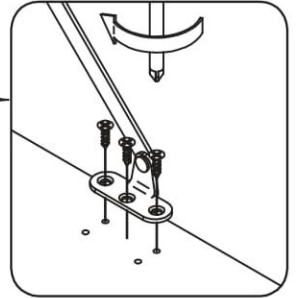
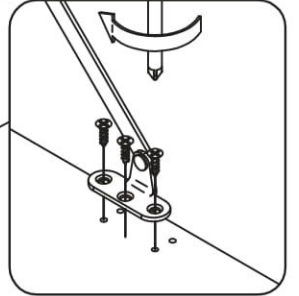
# 13.



## A



## C



## B

## D



BT50202

