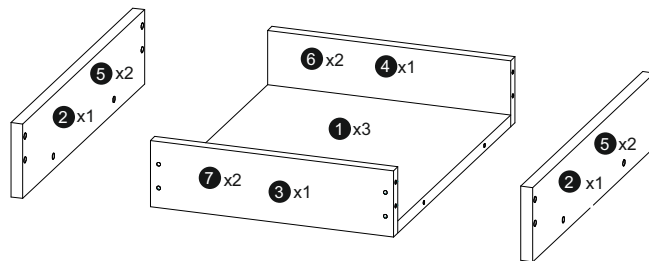
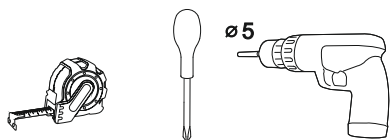
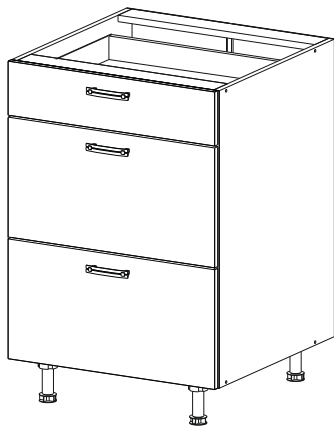
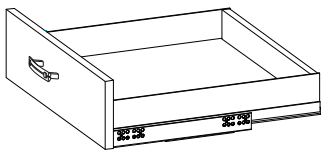


# DSHSK-1N-2W HAFELE

1+2

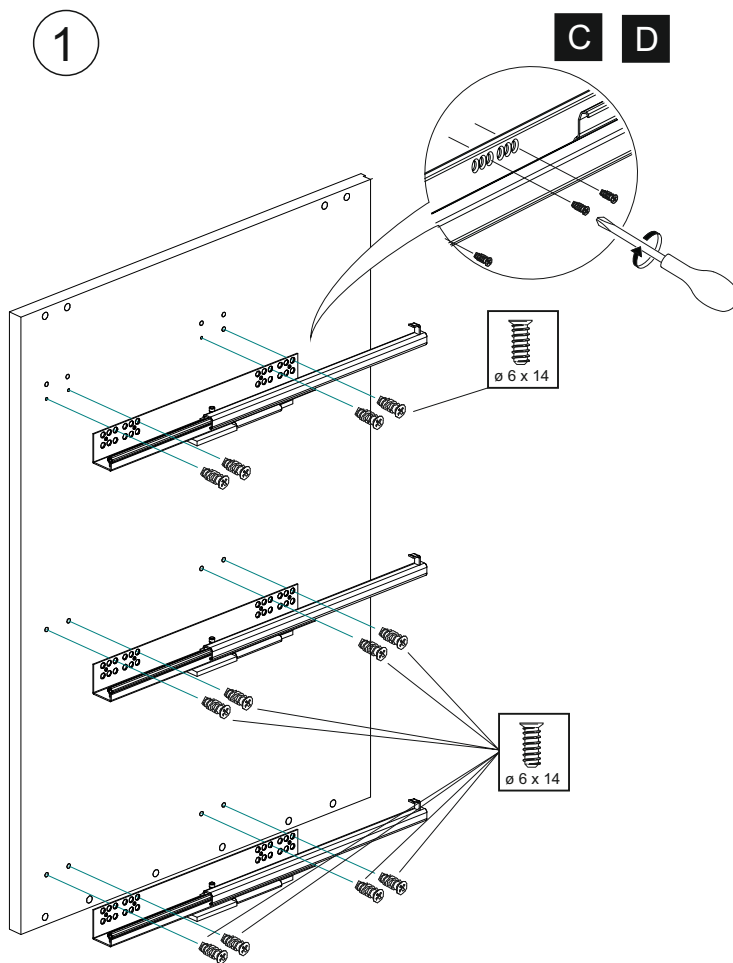
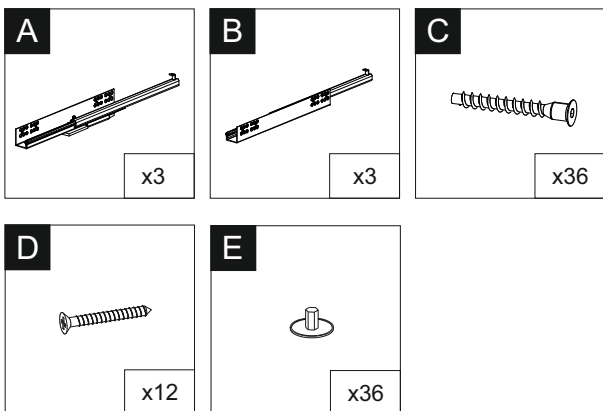


## DSHSK-40-2W-1N

|   | DLUGOŚĆ<br>LENGTH<br>LONGEUR | SZEROKOŚĆ<br>WIDTH<br>BREITE<br>LARGEUR | GRUBOŚĆ<br>THICKNESS<br>STÄRKE<br>GROSSEUR | ILOŚĆ<br>QUANTITY<br>ANZAHL<br>QUANTITE |
|---|------------------------------|---|--|---|
| 1 | 417                          | 327                                     | 16   | 3                                       |
| 2 | 450                          | 100                                     | 16   | 2                                       |
| 3 | 327                          | 89                                      | 16   | 1                                       |
| 4 | 327                          | 89                                      | 16   | 1                                       |
| 5 | 450                          | 160                                     | 16   | 4                                       |
| 6 | 327                          | 149                                     | 16   | 2                                       |
| 7 | 327                          | 149                                     | 16   | 2                                       |

## DSHSK-60-2W-1N

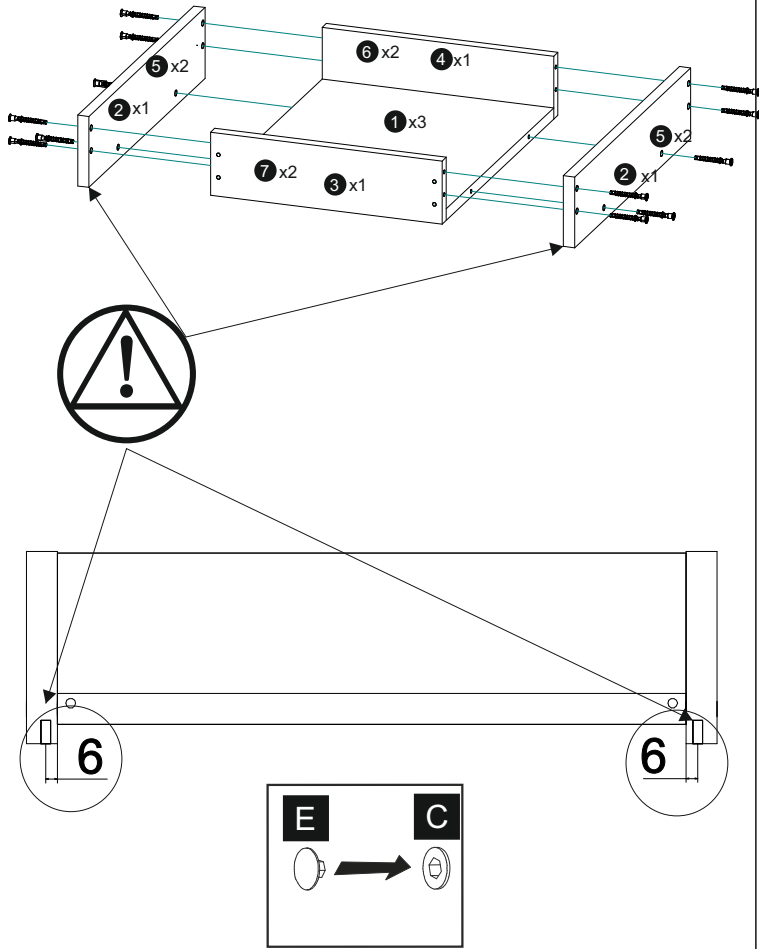
|   | DLUGOŚĆ<br>LENGTH<br>LONGEUR | SZEROKOŚĆ<br>WIDTH<br>BREITE<br>LARGEUR | GRUBOŚĆ<br>THICKNESS<br>STÄRKE<br>GROSSEUR | ILOŚĆ<br>QUANTITY<br>ANZAHL<br>QUANTITE |
|---|------------------------------|---|--|---|
| 1 | 417                          | 527                                     | 16   | 3                                       |
| 2 | 450                          | 100                                     | 16   | 2                                       |
| 3 | 527                          | 89                                      | 16   | 1                                       |
| 4 | 527                          | 89                                      | 16   | 1                                       |
| 5 | 450                          | 160                                     | 16   | 4                                       |
| 6 | 527                          | 149                                     | 16   | 2                                       |
| 7 | 527                          | 149                                     | 16   | 2                                       |



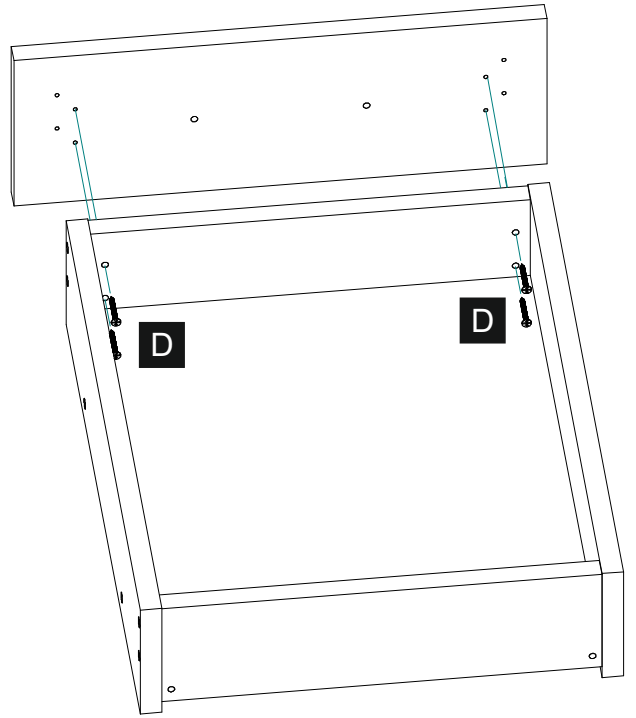
L/P

2

1+2



4



3

