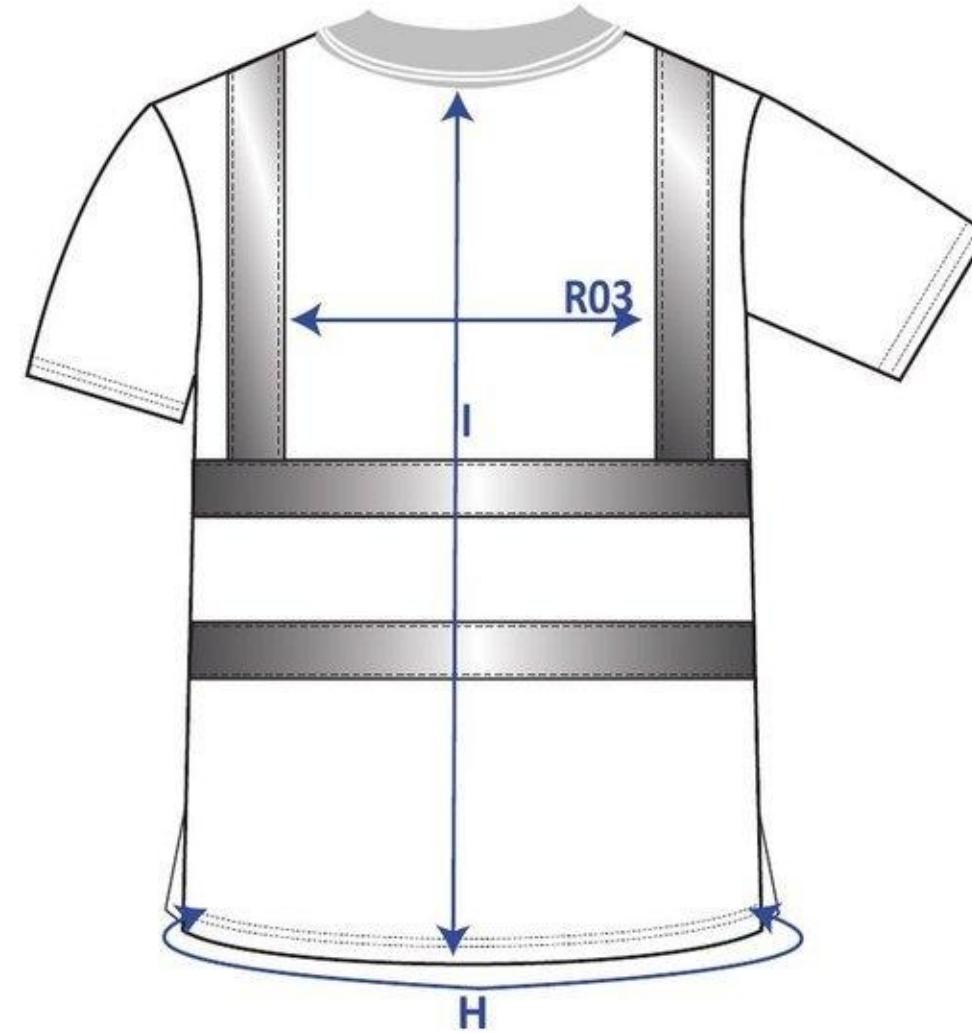
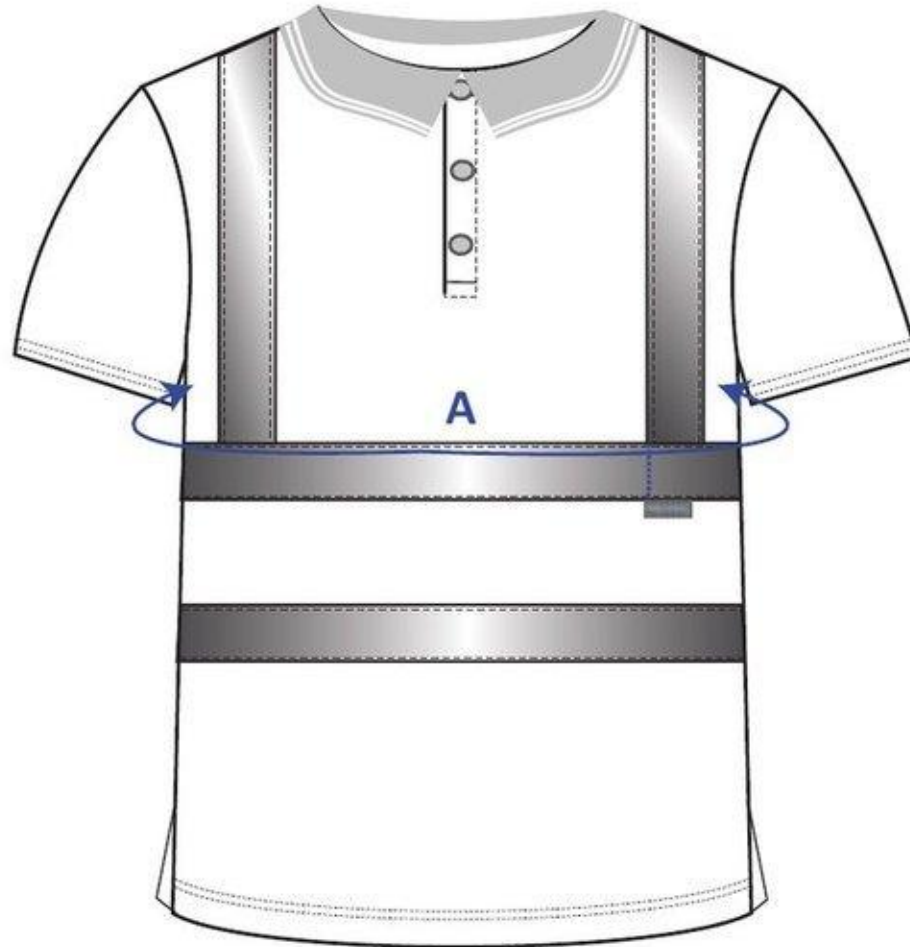


STYLE NO: S477

DESCRIPTION: Hi-Vis Short Sleeved Polo Shirt

FABRIC: 100% Polyester Birdeye Knit

COLOUR: Yellow, Red



Measurements are for fully relaxed fabric, in cm.		XS	S	M	L	XL	XXL	XXXL	4XL	5XL	6XL	7XL	Tol (+)
		80-88	92-96	100-104	108-112	116-124	128-132	136-140	144-148	152-160	164-172	176-184	
A	Chest	98	106	114	122	134	142	150	158	170	182	194	1
H	Hem circumference	98	106	114	122	134	142	150	158	170	182	194	0.5
I	Centre Back Length	74	76	76	76	76	76	78	78	80	80	82	1
R03	Distance between vertical bands of reflective tape	26	27	28	29	30	31	32	33	34	35	36	0.5