

SMART Flex DH31

All season tire designed for multi purpose application



SMART Flex TH31

All season tire for variable road conditions



3-Dimensional kerf design

Reliable traction, high mileage and reduced irregular wear.



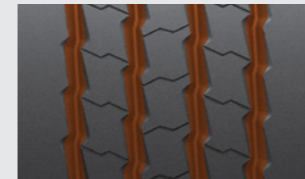
Self-regenerating kerfs (S.R. kerfs)

Controls tearing and wearing of tread with hidden grooves whilst maintaining traction at the end of the groove wear.



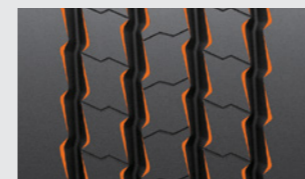
Combination structure of rib and 6 angle block pattern

Improved grip, increased mileage and enhancement of handling performance.



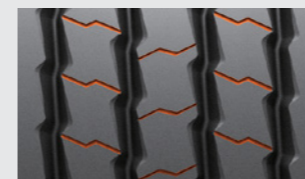
Main zig-zag groove

Provides excellent traction and water drainage under various road conditions.



Groove slant design

Slanted groove design helps to prevent chunking.



Lateral semi groove

Lateral groove helps improve initial traction performance.



Sizes & Specifications (Pattern Code: DH31)

Size	LI/SS	Ext.LI	Ply	Max. Air (PSI)		Max. Load (kgs)		Overall Diameter (mm)	Section Width	Tread Width	Tread Depth	Static Loaded Radius	RR	Wet Grip	Noise	Noise Class	M+S	3PMSF
				S	D	S	D											
315/70R22.5	154/150L		P18	131	131	3750	3350	1019	314	282	19.4	475	D	C	73	A	•	•
315/70R22.5	154/150L		P18	131	131	3750	3350	1019	314	282	19.4	475	D	C	73	A	•	•
315/80R22.5	156/150L 154/150M		P18	120	120	3750	3450	1085	316	272	20.4	503	D	C	73	A	•	•
315/80R22.5	156/150L 154/150M		P18	120	120	3750	3450	1085	310	272	20.4	503	D	C	73	A	•	•

Tire construction and material specifications subject to change without notice or obligation.



Recommended Vehicle Types & Position

○ Recommended position



Sizes & Specifications (Pattern Code: TH31)

Size	LI/SS	Ext.LI	Ply	Max. Air (PSI)		Max. Load (kgs)		Overall Diameter (mm)	Section Width	Tread Width	Tread Depth	Static Loaded Radius	RR	Wet Grip	Noise	Noise Class	M+S	3PMSF
				S	D	S	D											
215/75R17.5	135/133K		P16	123	123	2180	2060	773	218	186	12.1	361	C	B	69	A	•	•
235/75R17.5	143/141K		P18	127	127	2725	2575	796	244	218	12.6	371	C	B	70	A	•	•
245/70R17.5	143/141K 146/146F		P18	127	127	2725	2575	796	244	218	12.6	371	C	B	70	A	•	•
275/70R22.5	152/148J		P18	131	131	3550	3150	954	279	232	12.6	448	C	C	69	A	•	•
275/70R22.5	148/145M		P16	131	131	3150	2900	954	279	232	12.6	448	X	X	X	X	•	•
285/70R19.5	150/148K		P18	131	131	3350	3150	892	284	240	14.1	416	C	B	70	A	•	•
295/60R22.5	150/147K 152J		P18	131	131	3350	3075	918	292	250	13.6	433	C	C	70	A	•	•
305/70R19.5	148/145M		P18	123	123	3150	2900	917	308	242	14.6	426	C	C	69	A	•	•
385/55R19.5	156J		P16	130	0	4000	0	921.8	382	324	14.6	428	B	B	70	A	•	•
385/55R22.5	160K 158L		P18	130	0	4500	0	1000	382	324	14.6	467	B	B	70	A	•	•
385/65R22.5	164K 158L		P24	131	0	5000	0	1073	382	308	16	498	B	B	69	A	•	•
435/50R19.5	160J		P22	130	0	4500	0	928	444	378	12.6	431	B	B	69	A	•	•
445/65R22.5	169K		P20	130	0	5800	0	1153	450	322	15	532	B	B	69	A	•	•
750R16	123/119K		P14	110	110	1550	1360	804	208	150	11.6	372	X	X	X	X	•	•

Tire construction and material specifications subject to change without notice or obligation.

Recommended Vehicle Types & Position

○ Recommended position

