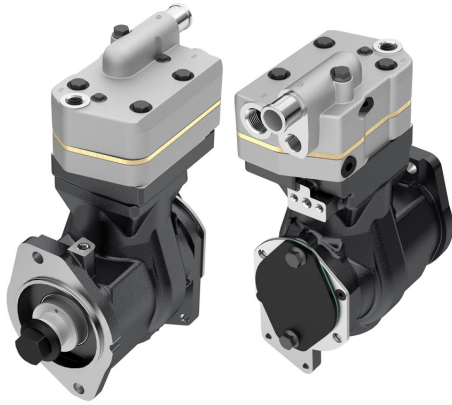


Application: 247 cc


| OEM | OE |
|------------|---------|
| 9111545150 | 3936808 |
| 9111545020 | 3949095 |
| | 3966517 |
| | 3976366 |
| | 4946294 |
| | 3969102 |
| | 5286968 |

| | |
|---------------------------------|-----------|
| Cylinder Bore | Ø75 |
| Stroke | 56 |
| Swept Volume | 247 |
| Air Inlet Port Size | Ø25 |
| Air Delivery Port Size | M27*2 |
| Number of Cylinders | 1 |
| Through Drive | YES |
| Unloader Port Size | M10*1 |
| Water Or Air Cooled | W |
| Water Inlet Port Size | 3/4-16UNF |
| Water Delivery Port Size | 3/4-16UNF |
| Water Cooled Valve Plate | YES |

Components

| 606.01.1100 | Crankcase | OEM | OE |
|-------------|-----------|-----|----|
| | | | |

| 599.01.1200 | Cylinder Head | OEM | OE |
|-------------|---------------|------------|---------|
| | | 9111549202 | 4089208 |

| 599.01.1220 | Cylinder Upper Head | OEM | OE |
|-------------|---------------------|-----|----|
| | | | |

| 599.01.1230 | Cylinder Lower Head | OEM | OE |
|-------------|---------------------|-----|----|
| | | | |

| 599.01.1300 | Coolant Plate | OEM | OE |
|-------------|---------------|-----|----|
| | | | |

| 602.01.1510 | Pump Adapter | OEM | OE |
|-------------|--------------|------------|---------|
| | | 9119022304 | 4089677 |

| 602.01.1600 | Bearing Cover | OEM | OE |
|-------------|---------------|------------|--------------------|
| | | 9111539252 | 4089222 4089222 |

| 235.01.1103 | Bearing | OEM | OE |
|-------------|---------|-----|----|
| | | | |

| 136.01.1900 | Cap | OEM | OE |
|-------------|-----|------------|--|
| | | 8950735894 | 1304881 3094835 11712508 0001312321 |

| 605.01.2900 | Gear | OEM | OE |
|-------------|------|-----|---------|
| | | | 3944516 |

| 599.01.2700 | Screw Kit | OEM | OE |
|-------------|-----------|-----|----|
| | | | |

| 218.01.1700 | Piston With Rings (STD) | OEM | OE |
|---|-------------------------|------------|--|
| | | 4111416232 | 513860 8121570 9982648 5000816053 0001311607 81541190004 81541196039 |
| 218.01.1700-Ø75.00 mm 218.01.1710-Ø75.25 mm 218.01.1720-Ø75.50 mm 218.01.1730-Ø75.75 mm 218.01.1740-Ø76.00 mm | | | |

102.01.1800 Piston Ring Kit (STD)


102.01.1800-Ø75.00 mm
 102.01.1810-Ø75.25 mm
 102.01.1820-Ø75.50 mm
 102.01.1830-Ø75.75 mm
 102.01.1840-Ø76.00 mm

OEM

4111416232
 1801770061
 8956710204
 4111419202

OE

513839
 513843
 1283826
 1391384
 1391385
 1396835
 3090388
 0011310711

599.01.2300 Repair Kit With Bushing

OEM
OE
599.01.2310 Repair Kit With Bushing & Piston

OEM
OE
599.01.2350 Repair Kit w/o Bushing

OEM
OE
599.01.2330 Repair Kit

OEM
OE
599.01.1280 Head Repair Kit

OEM
OE
599.01.2100 Gasket & Sealing Kit

OEM
OE
599.01.2200 Valve Kit

OEM
OE
599.01.2500 Unloader Valve Kit

OEM
OE
405.01.1400 Connecting Rod

OEM
OE

9111457372

599.01.1500 Crankshaft

OEM
OE
602.01.1502 Screw for Crankshaft

OEM
OE
617.01.1640 Cover Kit

OEM
OE
602.01.2600 Bushing

OEM
OE