

# TE series isolation transformer



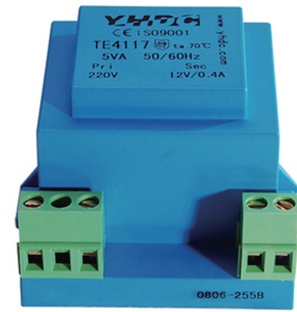
Model:TE4117

## Characteristics:

- Sub-plate mount, Vacuum Epoxy Encapsulated,
- Crimping terminal output.

## Technical Index:

- Technical Index: Sub-plate mount
- Flame resistance : UL94-V0
- Insulation class: B
- Operation temperature:  $-30^{\circ}\text{C} \sim +70^{\circ}\text{C}$
- Work frequency: 50Hz~60Hz
- Dielectric strength: 3.75KV 50Hz 1min

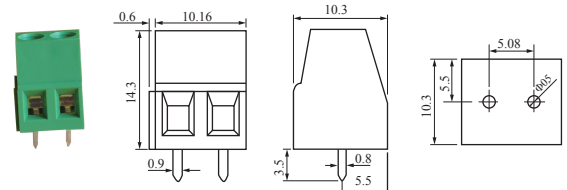


## Technical Parameters table:

Primary voltage	110/220/230	V
Primary voltage range	$\pm 10$	%
Voltage regulation	$\leq 20$	%
Power	5	VA
Temperature rising	$\leq 20$	$^{\circ}\text{C}$
No load loss	$\leq 0.6$	W
weight	185	g

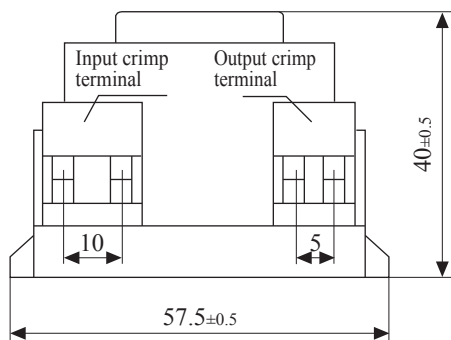
Secondary voltage	Secondary no load voltage	Secondary full load current
6V	7.1V	833mA
7.5V	8.9V	666mA
9V	10.7V	555mA
12V	14.2V	416mA
15V	17.8V	333mA
18V	21.4V	277mA
24V	28.5V	208mA

## Connector Illustration:

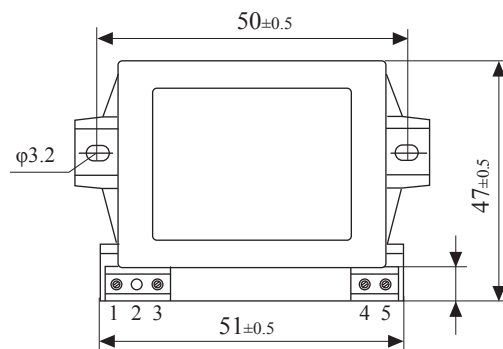


PCB direct welding crimp terminal, spacing 5.08

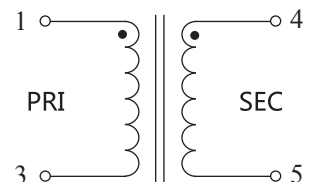
## Dimension (in mm) :



Front View



Top View



Schematic Diagram