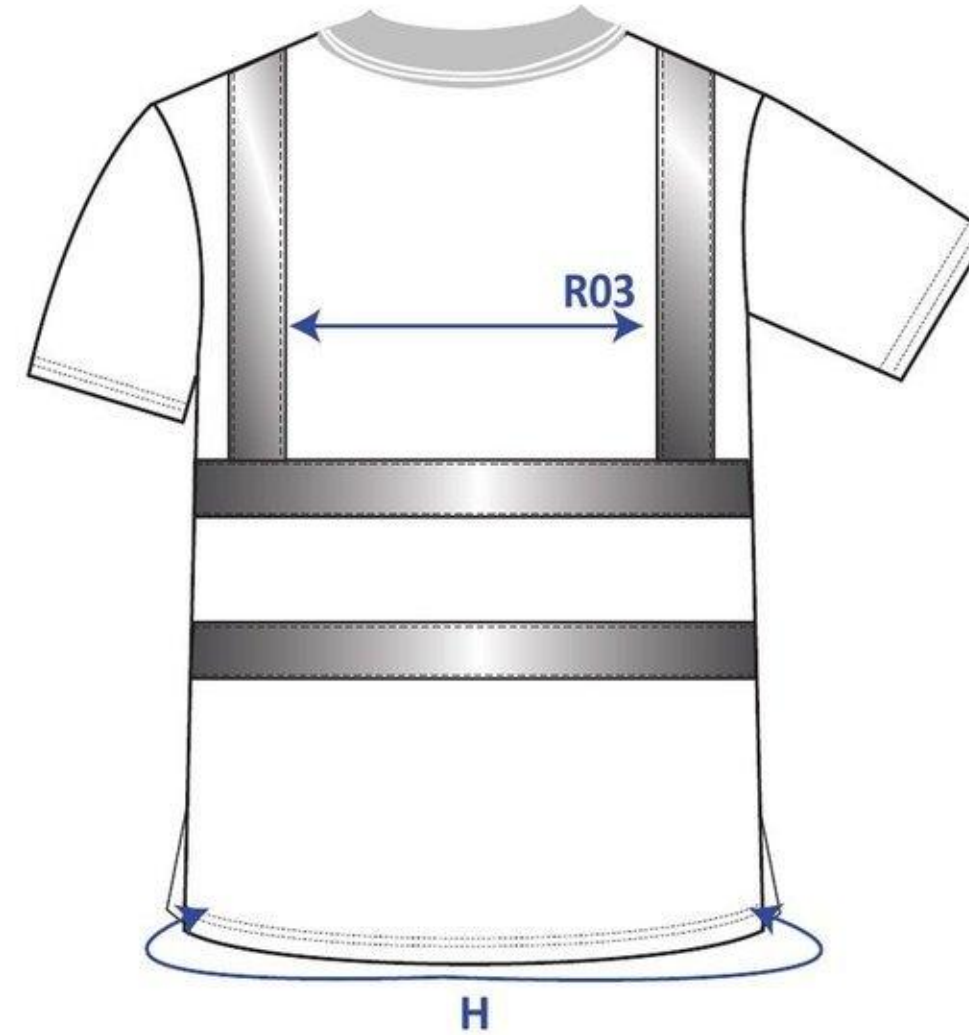
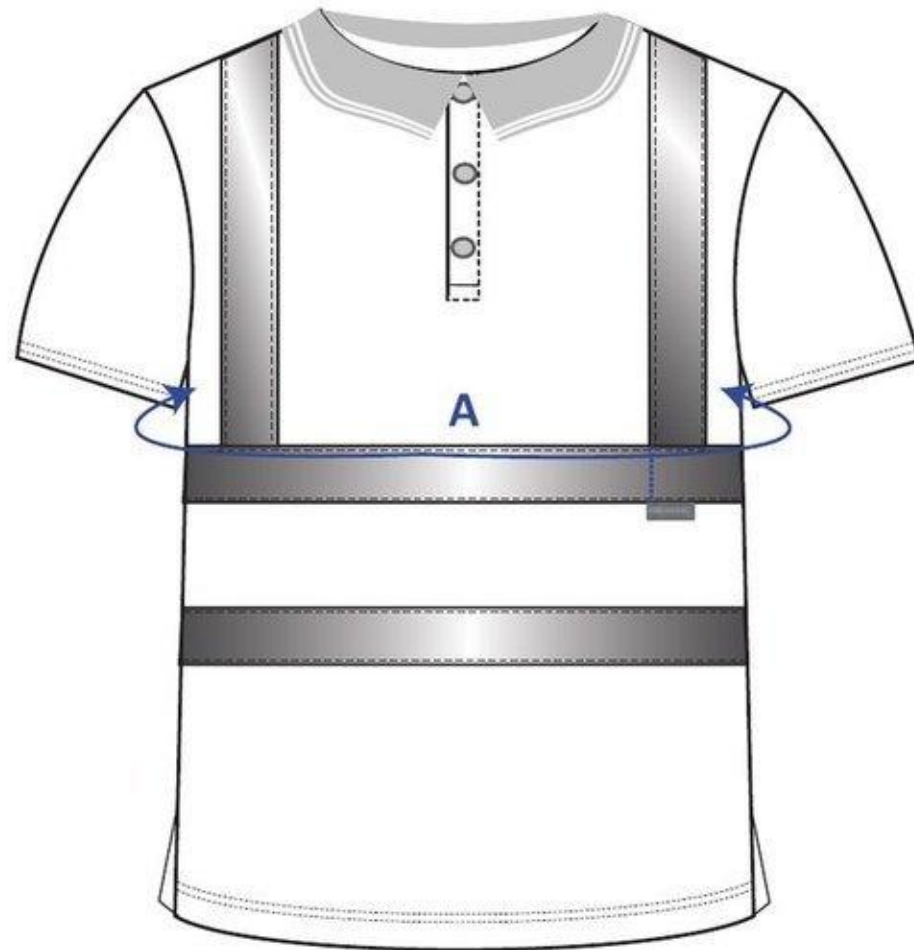


STYLE NO: RT22

DESCRIPTION: Hi-Vis Short Sleeved Polo Shirt

FABRIC: 100% Polyester Bird Eye Knit, 175g/m2

COLOUR: Orange



Measurements are for fully relaxed fabric, in cm.		XS	S	M	L	XL	XXL	XXXL	4XL	5XL	6XL	7XL	Tol (+)
		80-88	92-96	100-104	108-112	116-124	128-132	136-140	144-148	152-160	164-172	176-184	
A	Chest	98	106	114	122	134	142	150	158	170	182	194	1
H	Hem circumference	98	106	114	122	134	142	150	158	170	182	194	0.5
R03	Distance between vertical bands of reflective tapes	26	27	28	29	30	31	32	33	34	35	36	0.5