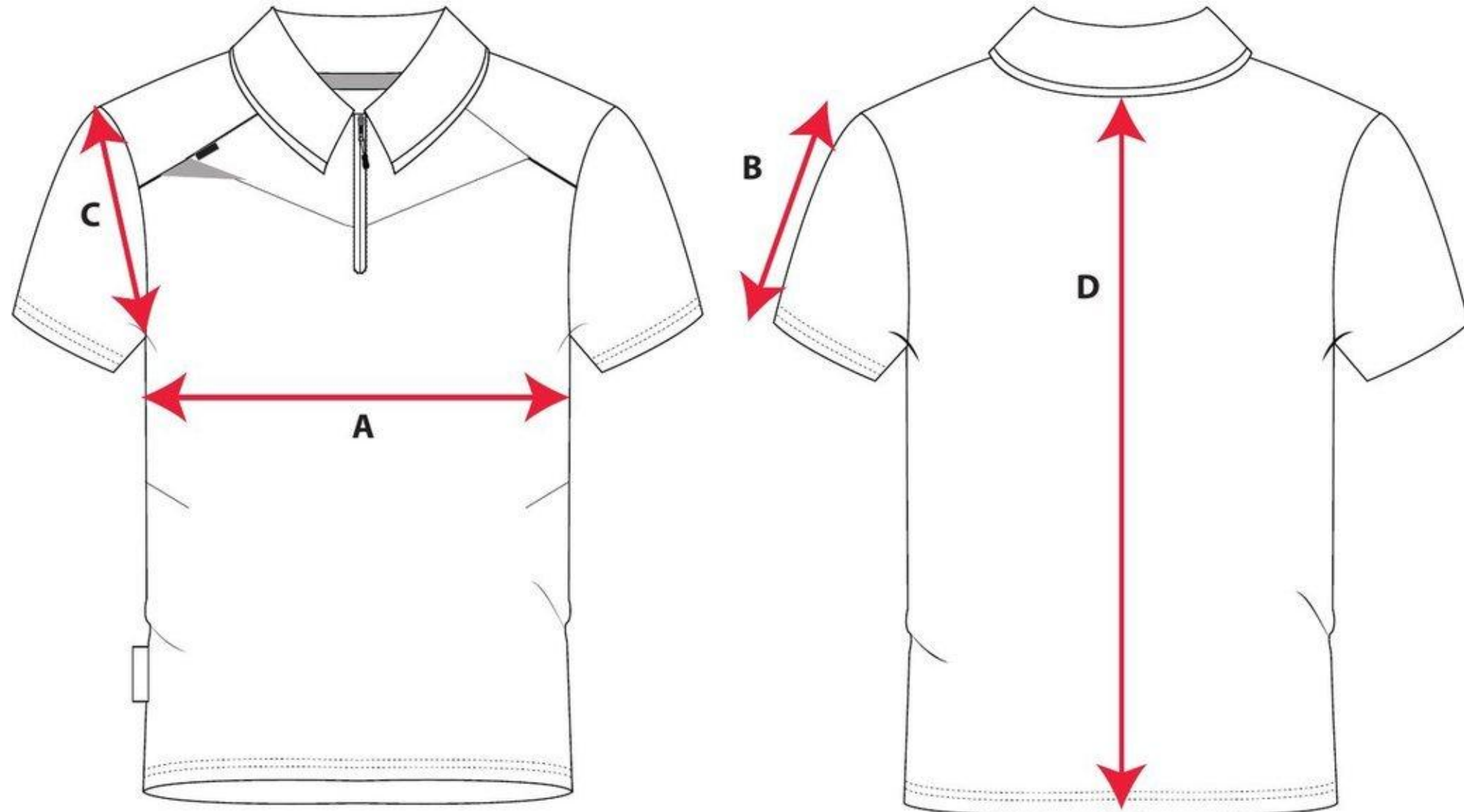


STYLE NO: DX410	DESCRIPTION: DX4 Two Tone Polo
------------------------	---------------------------------------



AREA	TO FIT	S	M	L	XL	2XL	3XL
A	CHEST WIDTH (HALF)	50	54	58	64	68	72
B	OVERARM SLEEVE LENGTH- CROWN TO HEM	22.5	24	25.5	27	28.5	30
C	ARMHOLE STRAIGHT	23	24	25	26.5	27.5	28.5
D	BACK LENGTH AT CB	73	74	75	76	77	78