

TECHNICAL CARD



LED Light Emergency Power Supply



Pursuant to the provisions of the WEEE Act, it is forbidden to put waste equipment marked with the symbol of a crossed out bin together with other waste. The user, wishing to get rid of electronic and electrical equipment, is obliged to return it to a waste equipment collection point. There are no hazardous components in the equipment that have a particularly negative impact on the environment and human health.



Free



Free



IP20

WARRANTY 2 YEARS

Type of light source

Directional (DLS) or non-directional (NDLS) light source	-
Connected light source (cls)	-
Mains (MLS) or non-mains (NMLS) light source	-
Technology	LED

Electrical parameters

On-mode power (Pon)	3-50 W
Rated voltage, frequency	AC 220-240 V, 50/60 Hz
Rated current	200 mA
Electric shock protection class	II
Standby Power (Psb)	0.2 W

Additional information

Place of application	indoor
Housing colour	White
Ultraviolet radiation	no
Operating temperature range	0° +45°C
Battery type	Li-ion 18650
Battery capacity	2200 mAh (2pcs)

VIDEX VL-EMM-L23

INDEX: VL-EMM-L23

Battery replaceable	yes
Suitable for installation in normally flammable surfaces	yes
Mercury content	Does not contain
Ingress protection	IP20
Housing material	PC

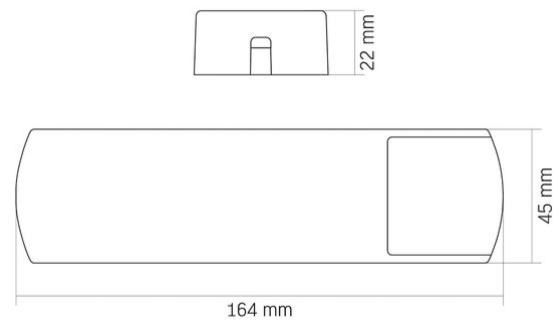
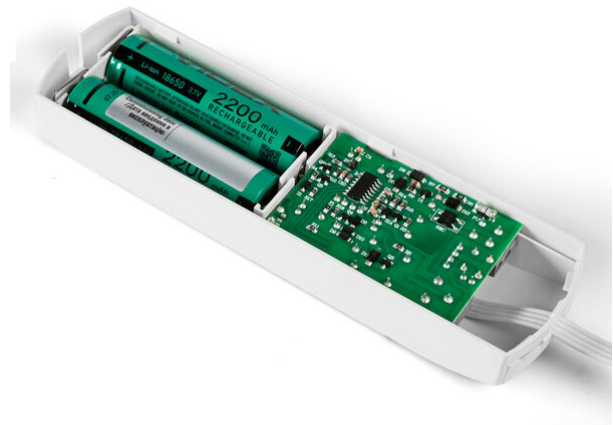
Dimensions

EAN	4820246487887
In the package	1 pc.
Height	164 mm
Outer box	100 pcs.
Width	45 mm
Depth	22 mm
Unit nett weight	165g

Signs marking goods

Packaging marking	Recycling of waste, CE, Utilization
-------------------	-------------------------------------



VIDEX[®]**VIDEX VL-EMM-L23****INDEX: VL-EMM-L23**

We reserve the right to make technical changes. The data contained in this material is not legally binding.

Allegro opt Sp. z o.o., ul. Mierzeja Wiślana 11,
30-732 Krakow, Poland.

INDEX: VL-EMM-L23



The product must be used indoors



Class of protection against electric shock II - provided not only by basic insulation but also by double or reinforced insulation



The product can be installed and used in/on normally flammable surfaces



Waste recycling after the end of the product's service life



The product meets the requirements of EU directives



It is forbidden to throw away waste equipment marked with the symbol of a crossed-out bin with other waste



— The product does not emit ultraviolet light



— The product does not contain mercury



— Class of protection against dust and moisture. Protection against solid objects larger than 12 mm; no protection against moisture