

A6 USER'S GUIDE



B2B Version:2022-10

CONTENTS

Guidelines for Use	3-5
Computer Set-up (Windows & MAC OS)	6-12
Recording Software Settings	13-14
Important Notice	14-15

WHAT'S IN THE BOX?

- 1 X Microphone with Shock Mount
- 1 X Pop Filter
- 1 X Tube with Locking Screw
- 1 X Stand Base
- 1 X USB Cable (2m)
- 1 X User's Manual

CONTACT US

Get Social: <http://bit.ly/FifinePage>

Contact Info:
E-mail: web@fifine.cc

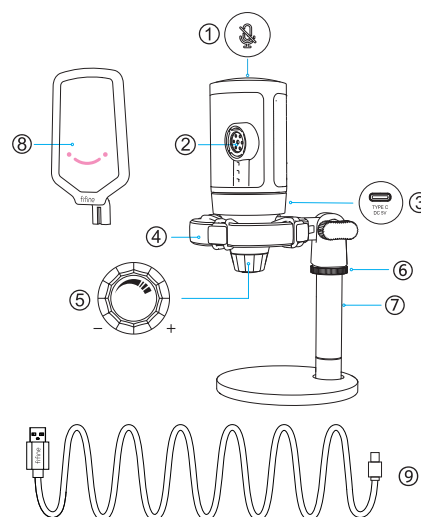
More product inquiries can be found on the website.
Company Website: <https://fifinemicrophone.com/>

WARRANTY

Fifine microphone warrants its hardware product defects in materials and workmanship for a period of one year from the date of original retail purchase, provided the purchase was made from authorized Fifine microphone dealer. This warranty is void if the equipment is altered, misused, mishandled, suffers excessive wear or is serviced by any parties not authorized by Fifine Microphone. For warranty service, contact your local distributor or web@fifine.cc.

1

PRODUCT DESCRIPTION



- ① Mute Button - Tap to mute or unmute the mic. The RGB light will be off when the mic is muted and will be on when the mic is active.
- ② Mic Capsule - Condenser microphone element with cardioid polar pattern.

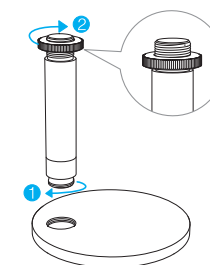
2

- ③ USB C Port - Connect directly to your computer via the included USB cable.
- ④ Shock Mount - Isolate the mic and suppress the sound of unintentional rumbles and bumps.
- ⑤ Microphone Gain - Control the sensitivity of the mic capsule. Turn clockwise to increase the gain, and turn counterclockwise to decrease the gain.
- ⑥ Locking Screw - For fixing your mic's final position.
- ⑦ Mic Stand - Used to hold the mic.
- ⑧ Pop Filter - Filter out the harsh "p", "t" and "b" sounds.
- ⑨ USB C to USB A Cable (6.6') - For connecting the mic to the computer. (Only the included USB cable is 100% guaranteed for compatibility.)

GUIDANCE FOR USE

1. Mic Stand Installation

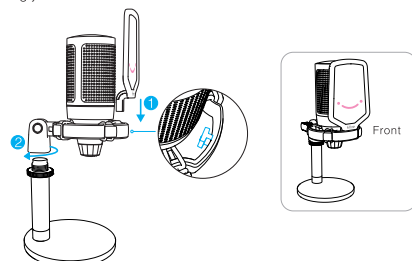
Screw the tube to the stand base. And turn the locking screw clockwise, but do not tighten it completely.



3

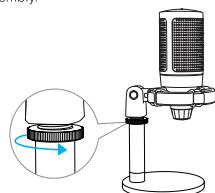
2. Pop Filter and Shock Mount Installation

Insert the pop filter to the shock mount. Attach the shock mount onto the tube, and turn clockwise horizontally 2 to 3 turns until the pop filter is facing you.



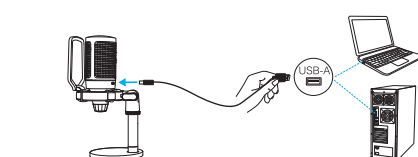
3. Lock the mic's position

Turn the locking screw counterclockwise to lock the microphone. And leave some space between the locking screw and the shock mount for easy disassembly.

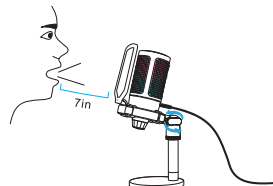


4. Tightly plug the included USB cable into the mic, and plug the USB-A connector into the USB port on your computer.

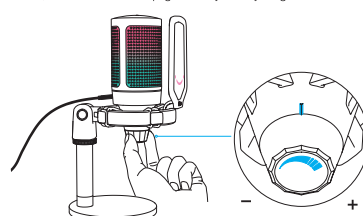
4



5. Adjust the angle of the mic with the thumbscrew. We suggest to speak into the mic within 7inch.



6. To get the optimum result of recording, we suggest to turn down the mic gain first, and then turn it up gradually until you get the desired loudness.

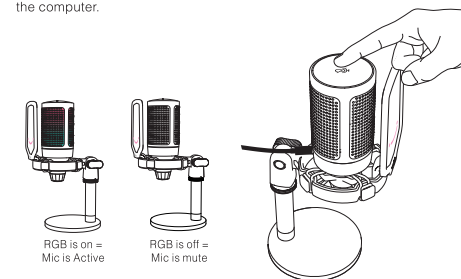


5

MUTE BUTTON OPERATION

Tap the top of the microphone to mute/unmute the mic. The mic RGB light will indicate the current mute status of the mic.

Tips: The color of RGB light will change automatically in a preset mode. This mode could not be changed by any button on the mic or any app on the computer.

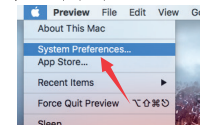


COMPUTER SETUP

Apple MAC OS

1. Input Settings

1) Plug the free end of the provided USB cable into the USB port on your computer. The RGB light will be on, indicating the mic is powered. Your computer will automatically recognize the USB device and install a driver. There may be no pop-up window or message though.

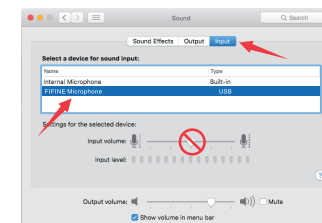


6

2) Next, click Sound to display the Sound preference pane.



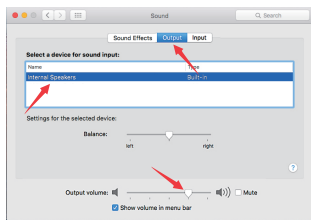
3) Select FIFINE Microphone as Input Device. The mic input level is only controlled by the gain knob on the mic, and cannot be controlled directly on Mac or any software. When you speak into the mic, the input level meter will move, means the mic is picking up your voice.



2. Output Settings

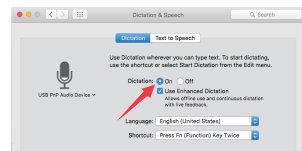
Choose the output device you need and adjust the output volume here.

7



Tips:

- If you want to monitor your voice when using Macbook, you must turn on any recording software first (Audacity for example), make sure to click "Software Playthrough(on)", then click the record button to begin, otherwise you can not hear any sound when you speak to the mic.
- Choose the default Dictation & Speech software when you use the speech to text in Macbook, click "On" under Dictation window, so that your microphone can be recognized by the software.



- If your Mac only has USB C port, you will need a genuine Apple USB-C to USB female adapter for connection. And please plug the USB adapter into your Mac first, then connect the mic with the adapter.



8

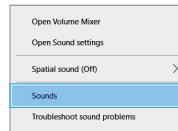
Windows

1. Input Settings

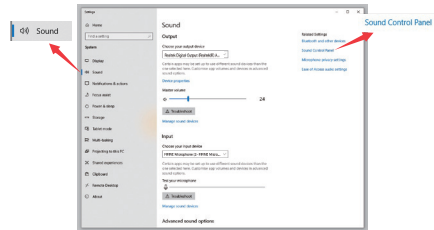
Plug the USB cable into your computer and the RGB lighting will be on, indicating the mic is powered. Please wait for a few seconds when first time operation, since driver of microphone takes time to automatically install. There may be no pop-up window or message though. (If plugging USB plug in a different USB port, driver installs again).

After installation, you can test the mic by speaking to it. If the mic picks up no sound, please follow procedures below.

- 1) Right-click the speaker icon at the bottom right of the screen. Click "Sounds".

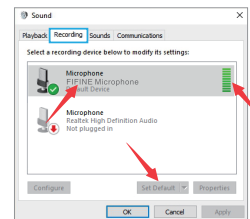


- 2) Click the Sound control panel.

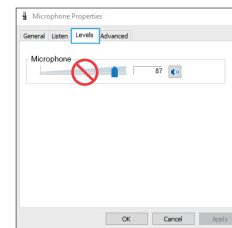


9

- 3) Select the Recording tab, and choose "FIFINE Microphone" as the default device. When you speak to mic, bar-type icon will turn green and bounce. If it remains unchanged, please reset computer and replug the mic in another USB port. If there's still no "FIFINE Microphone", please contact FIFINE after sales service.



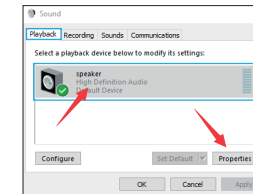
- 4) The mic input level is only controlled by the gain knob on the mic, and cannot be controlled directly on computer or any software.



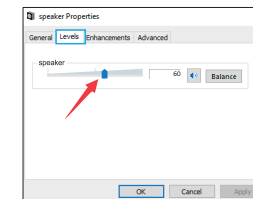
10

2. Output Settings

- 1) Confirm the loudspeaker is open.

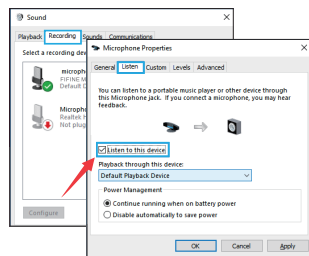


- 2) Click the loudspeaker is being used - "Properties" -- "Levels", drag progress bar to adjust volume of output



- 3) If you want to monitor your recording, click Microphone "FIFINE Microphone" - "Properties" - "Listen" - click "Listen to this device" - "Apply". No sound is heard through earphone/ built-in speaker of computer, if you don't follow this procedure.
Tips: Click off "Listen to this device" when you are using any recording software or chatting software (Skype).

11



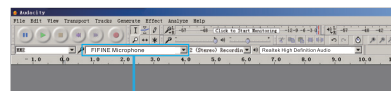
Tips: (Applicable for MAC and Windows)

1. If computer prompts that it's unable to identify USB devices, please restart computer and replug the microphone into rear back USB port of your computer.
2. If the mic is recognized but no sound coming out, please check whether System Sound is muted and make sure the RGB lighting is on (means the mic is active).
3. If the mic is recognized but no sound comes out, and your PC is running on Windows 10, please go to settings > privacy > microphone and click the "Allow apps to access the microphone" to ON, then restart your PC.
4. If the sound of your mic is inconsistent or the volume randomly changes, please disable the sound activated recording function of the application (like "Automatically adjust volume" of Zoom). And if you're using Windows computer, please go to Settings-Privacy-Microphone, disable XBOX Console Companion and XBOX Game Bar under it.

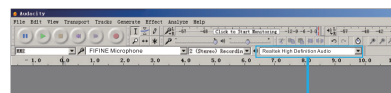
12

RECORDING SOFTWARE SETTINGS

1. Make sure you have the correct input / output selected.
Tips: log out the [Audacity] (or other recording software you are using) if you find the USB microphone is unavailable. And restart the software after the mic is re-plugged.

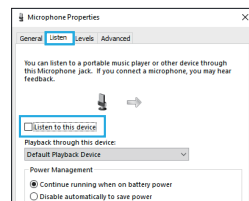


Input: FIFINE Microphone



Output: Pls choose your output device as needed

2. Make sure click off "listen to this device" in your computer system when you are using any recording software, or else you would hear duet of yourself just like too much echo.



13

3. There are several ways to improve the usage. Come to FIFINEMICROPHONE.COM, find Technical Support under the "SUPPORT" tab or type the <https://fifinemicrophone.com/pages/knowledge-base> directly to search the Technical Support solution for your interested subject.
4. For windows computers, we recommend Audacity, and for Apple computers, you can use Apple's own QuickTime player to test the recording.

IMPORTANT NOTICE

• Setting your software levels

Correct adjustment of microphone level is important for optimum performance. Ideally, the microphone level should be as high as possible without overloading the input of your computer. If you hear distortion, or if your recording program shows levels that are consistently overloaded (at peak levels), turn the microphone volume (or level) down through the gain control on the mic. If your recording program shows insufficient level, you can increase the microphone gain through the gain control on the mic.

• Selecting software

You have many choices in recording software. Audacity, available for free online at <http://audacity.sourceforge.net/>, is a widely used software. If you plug in the mic AFTER you load Audacity, it may not recognize the mic while it may still record, the results will be unsatisfactory. If that happens, just restart Audacity AFTER plugging the USB into your computer and click on the FIFINE Microphone option.

14

• Positioning the side-address mic

To achieve the best frequency response, it is important to have the mic capsule (the side with pop filter) pointed at the user's mouth, instrument or any other sound source. For speaking/singing applications, the ideal position of the microphone is directly in front of the person who is speaking/ singing. The same position is optimal when miking an instrument such as an acoustic guitar, drums or piano. Test the mic in different distances to find the best sound for your particular setup.

• Protecting your microphone

Avoid leaving your microphone in the open air or in areas where temperatures exceed 110° F (43° C) for extended periods. Extremely high humidity should also be avoided.

SPECIFICATION

Element:	Condenser Microphone
Power Supply:	5V
Operating Current:	50-80mA
Polar Pattern:	Uni-directional
Frequency Response:	60Hz-18KHz
Sensitivity:	-40±3dB
S/N Ratio:	1kHz > 70dB A+
Max SPL:	110dB

15