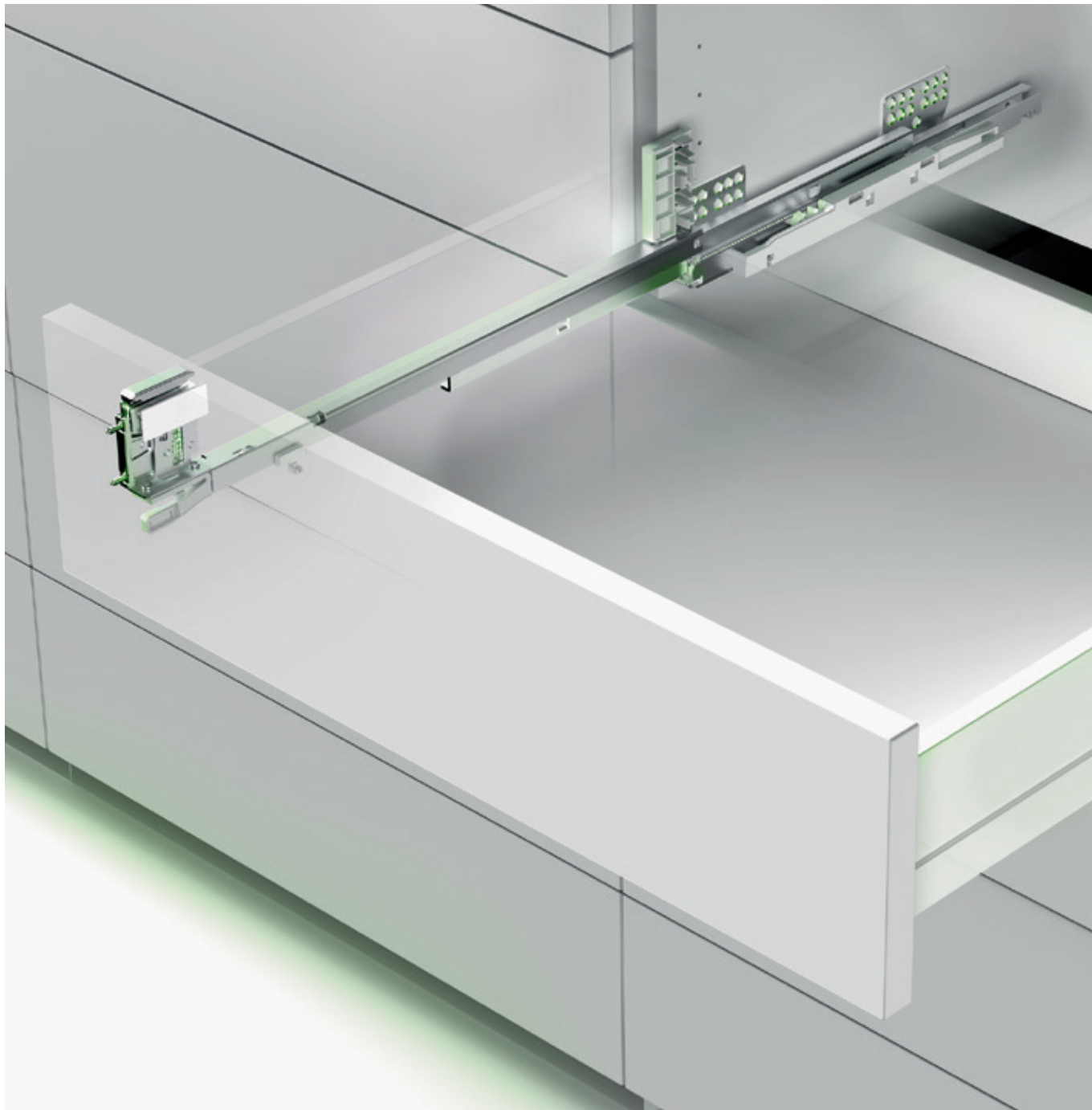


***Ten<sup>2</sup>***



***A drawer  
evolution***



**FORMENTI &  
GIOVENZANA**



Gieffe



FGV Slovakia, Spol s r.o.



FGVTN Brasil LTDA.



FGV Dongguan



# Great Numbers, Great Value



FGV is the leading Italian manufacturer of furniture hardware and components. Since 1947 the company develops, produces and sells worldwide clever solutions for the furniture and kitchen industry at the right price. Over the years MADE IN FGV has become synonymous of Italian design combined with mass volume economies of scale.

True to its slogan “Great Numbers, Great Value”, FGV offers to the market the right products in the right quality at the right price.

With 4 production plants in Italy, Slovakia, Brazil and China working with the same quality standards, FGV has the tools to propose affordable solutions with the latest technologies.

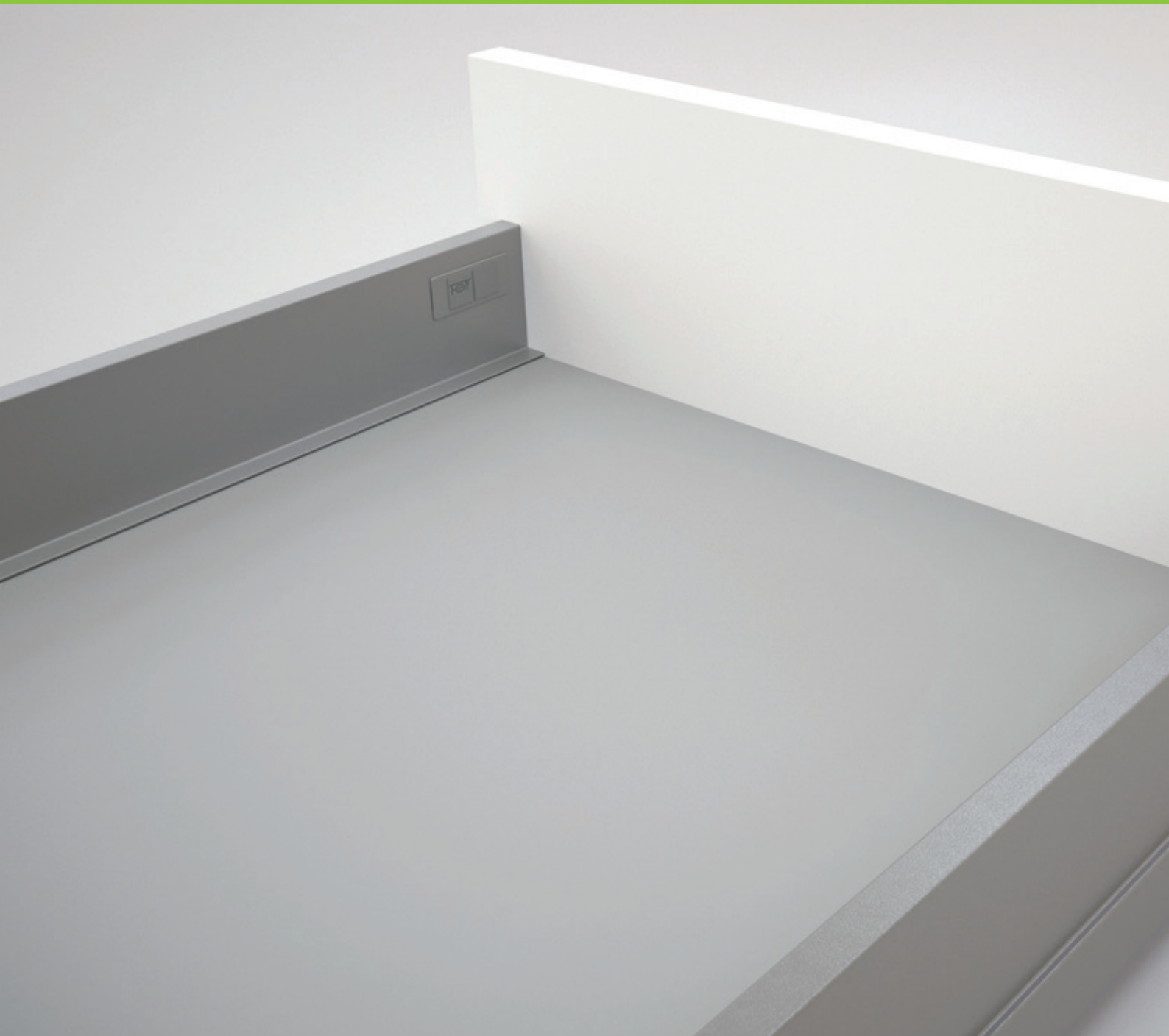
Using state-of-the-art and cost efficient technology, FGV delivers a product portfolio which covers the needs of the industry. The FGV sales network of own subsidiaries is completed by a very performing net of strategic distributors to deliver modern furniture technology in every part of the world.

Investing constantly in Customer service and new logistics solutions, FGV aim to help the furniture and kitchen industry to deliver an improved experience to the end-consumer when these buying and using furniture or kitchen cabinets.



Formenti & Giovenzana S.p.A.







## *A drawer evolution*

Elegant and extra slim shape

---

Brilliant and trendy colours

---

Motion at its best

---

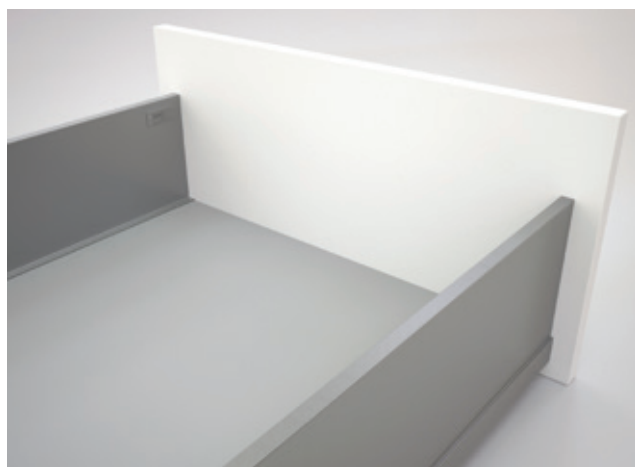
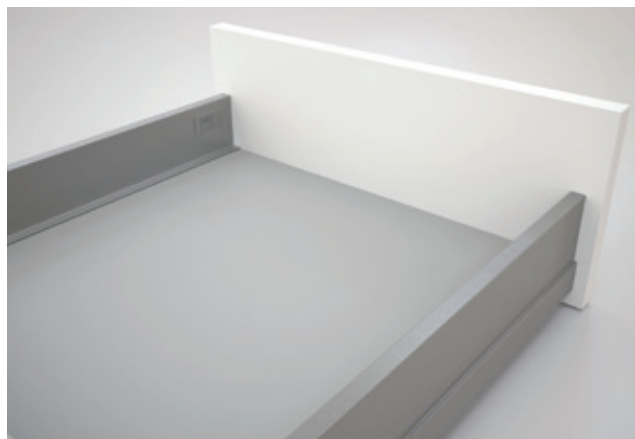
OneTouch+SlowMotion technology

---

**Ten²** is the new high quality and high performance double wall drawer technology with extra slim shape. Ten² is a complete range covering all usual applications with clever solutions, Italian design and elegance. Ten² stands for fulfilment of the highest criteria where every detail counts. Ten² is a synonymous of state-of-the-art conception, use of environmental friendly materials and production solutions.

## *Elegant and extra slim shape*

The Ten<sup>2</sup> drawer system is characterized by a very slim shape and an enriched superior design. Three different heights allow to create elegant drawer and pan drawer solutions and maximizing storage space without railing application.



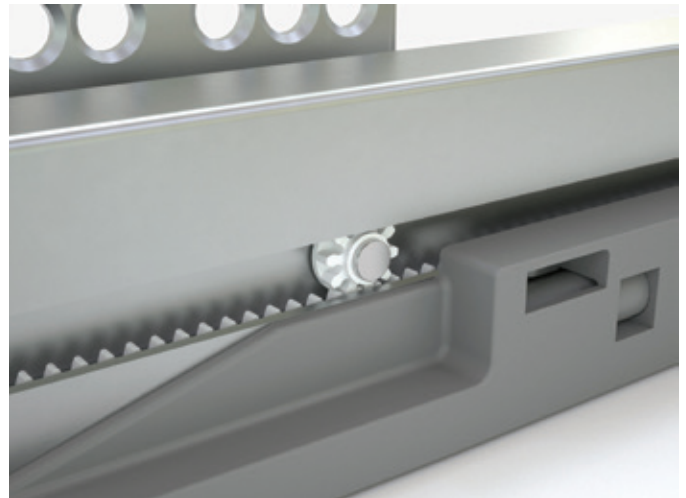
## *Brilliant and trendy colours*

The Ten<sup>2</sup> drawer is available in a full range of colours; from standard White and Grey to innovative Storm Grey and Coffee Black to create drawers with modern look and matching perfectly with wood and current design trends. The final result is an elegant and high end furniture appeal.



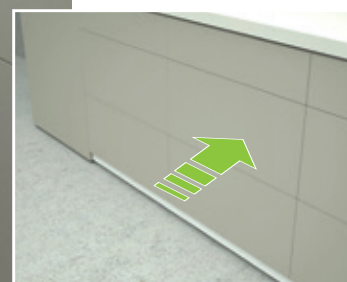
### *Motion at its best*

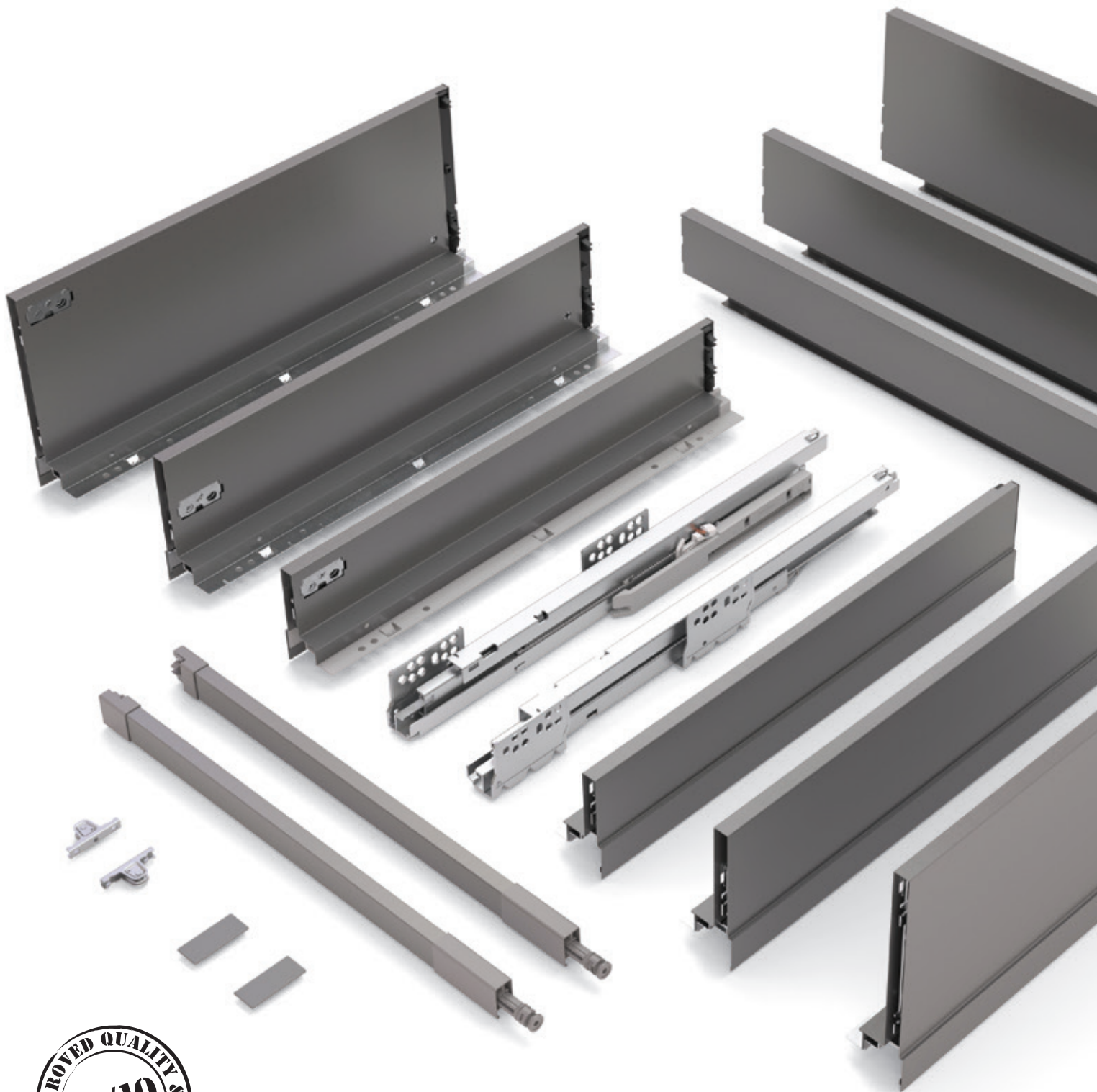
Further improvements on the already tested and reliable Ten slides guarantee better performance according to soft sliding movement and high stability. The full extension sliding system with a load capacity of 45kg throughout the range, is equipped with Dual-Synchro stabilisation for noiseless and a new powerful SlowMotion damper for perfect operation and long lasting function.



### *OneTouch + SlowMotion technology*

Never so easy to open and close a drawer with the new OneTouch+SlowMotion System. A completely hidden mechanism that ensures, with a gentle press on the front, a perfect and silent opening and closing. Depth adjustment on both sides guarantees precise front gap regulation. Easy to install, no cables or electricity required.









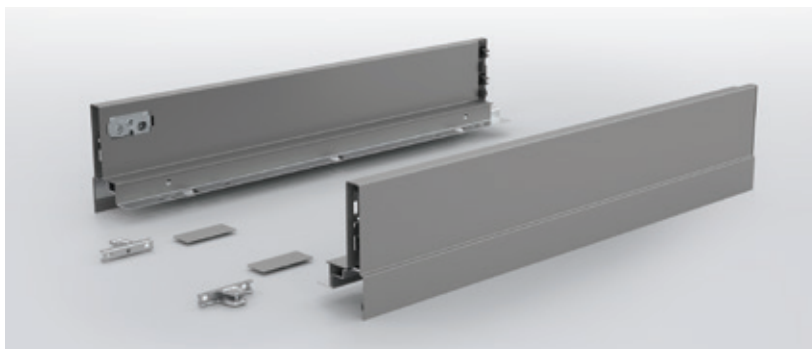
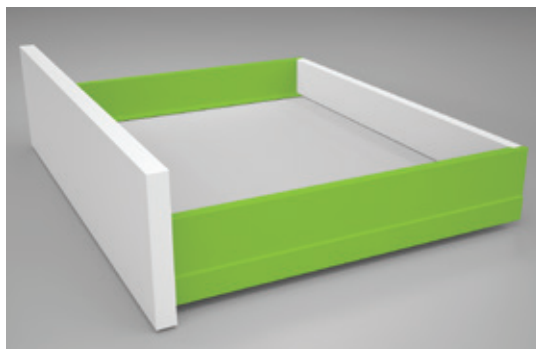
---

# Ten<sup>2</sup> Index

<i>Drawer H90</i>	<i>10-11</i>
<i>Drawer H120</i>	<i>12-13</i>
<i>Drawer H180</i>	<i>14-15</i>
<i>Slides</i>	<i>16-17</i>
<i>OneTouch+SlowMotion technology</i>	<i>18-19</i>
<i>Steel back panels</i>	<i>20-21</i>
<i>Back fixings for wooden back panel</i>	<i>22-23</i>
<i>Rectangular railing system</i>	<i>24-25</i>
<i>Back fixing brackets for rectangular railing</i>	<i>26-27</i>
<i>IN internal drawer – crystal front</i>	<i>28-29</i>
<i>IN internal drawer – aluminium front</i>	<i>30-31</i>
<i>Stabilizer kit</i>	<i>32-33</i>
<i>Acquario undersink solution</i>	<i>34-35</i>
<i>Standard drawer kit</i>	<i>36-37</i>
<i>Instructions for use</i>	<i>38-44</i>



# Drawer H90



**Double wall steel drawer height 90mm, epoxy finish, with strong design features and state-of-the-art technology**

## Benefits for the industry

- Large range of depth from 270 to 550 mm
- All steel front fixing mechanism for strong and secure fixing
- Vertical and horizontal adjustment in the front fixing mechanism
- Bottom fixing via ClawFix or screws without processing on the panel
- Decorative cover cap with possibility of customisation

## Benefits for the consumer

- Four metal finishes: Coffee Black and Storm Grey for high end look and perfect match for wooden and modern finishes, standard Grey and Polar White for a linear and clean look
- Optimised inner space thanks to straight outer and inner faces
- Easy to clean thanks to hygienic bottom lip and clean adjustment of every connection
- GreenSilver® technology for low carbon footprint production process and 100% recycle ability for reduced ecological impact

Code	Description	Packing
58.Y0A0.**.27.00010	Left and right drawer side 270	Industrial
58.Y0A0.**.30.00010	Left and right drawer side 300	Industrial
58.Y0A0.**.35.00010	Left and right drawer side 350	Industrial
58.Y0A0.**.40.00010	Left and right drawer side 400	Industrial
58.Y0A0.**.45.00010	Left and right drawer side 450	Industrial
58.Y0A0.**.50.00010	Left and right drawer side 500	Industrial
58.Y0A0.**.55.00010	Left and right drawer side 550	Industrial
<i>** colour codes: N2 = Coffee Black / S8 = Storm Grey / A6 = standard Grey / F1 = Polar White. Industrial packing composed by: 1 box with 10 right sides and 1 box with 10 left sides.</i>		
58.YM00.**.0000.000	Cover cap with FGV logo	1000 pcs
58.YM00.**.0000.00N	Cover cap without logo	1000 pcs
<i>** plastic colour codes: N2 = Coffee Black / S8 = Storm Grey / A6 = standard Grey / F1 = Polar White. It is possible to order embossed or silk-screen printing cover cap.</i>		
58.AY10.07.0000.000	Front brackets for self-tapping screws	200 pcs
58.AY20.07.0000.000	Front brackets with 10mm knock-in dowels	200 pcs
58.AY30.07.0000.000	Front brackets with 10mm expanding dowels	200 pcs
58.AY40.07.0000.000	Front brackets for self-tapping screws – Special pattern	200 pcs



Front brackets for self-tapping screws

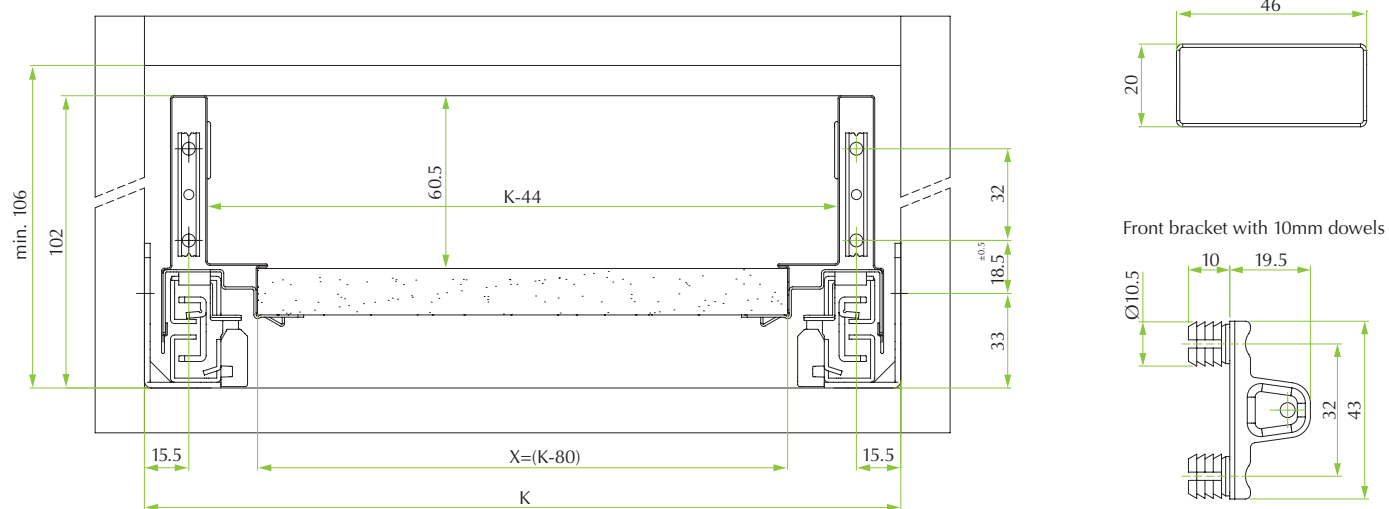


Front brackets with 10mm knock-in dowels

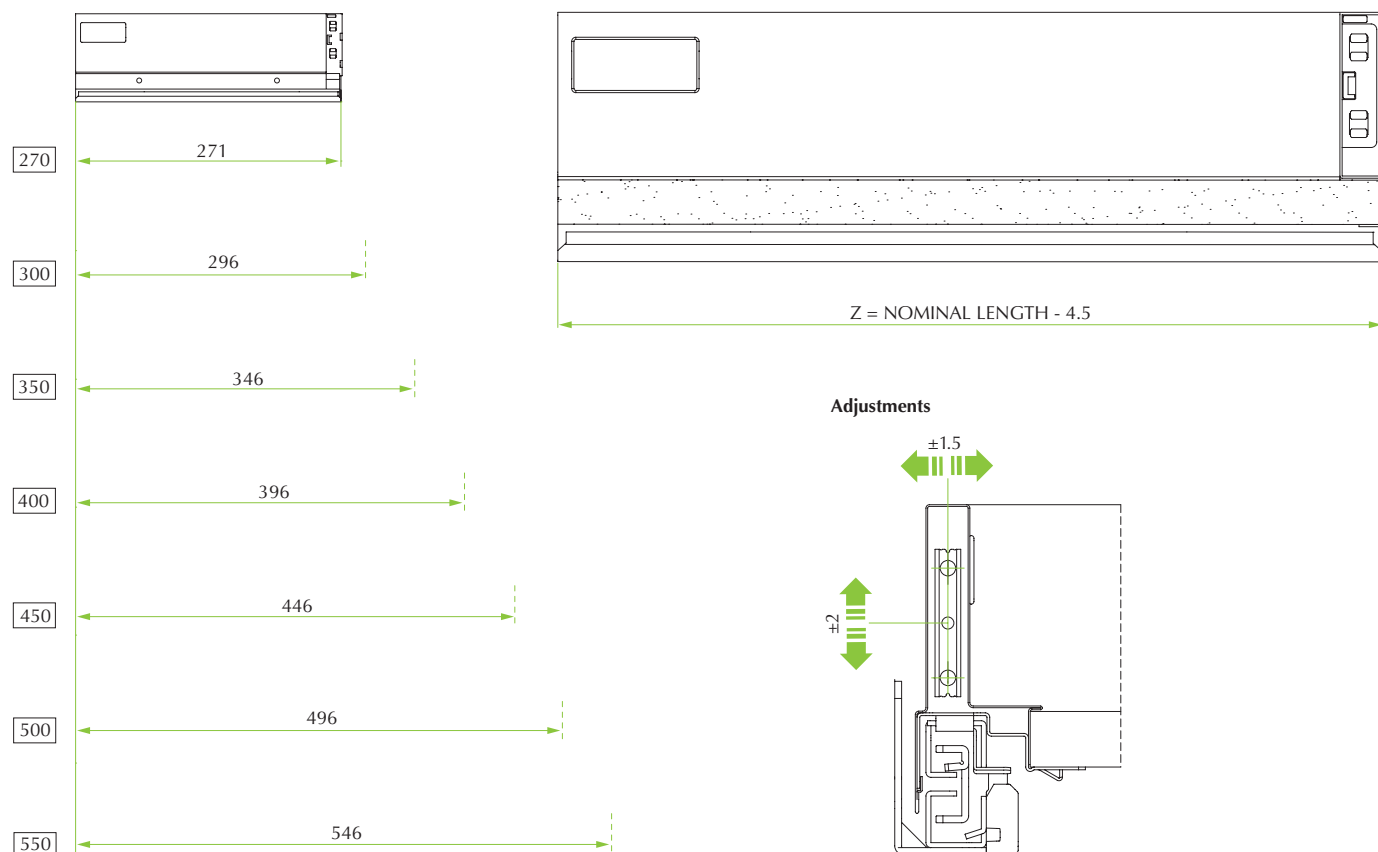


Front brackets with 10mm expanding dowels

## Front drilling & dimensions



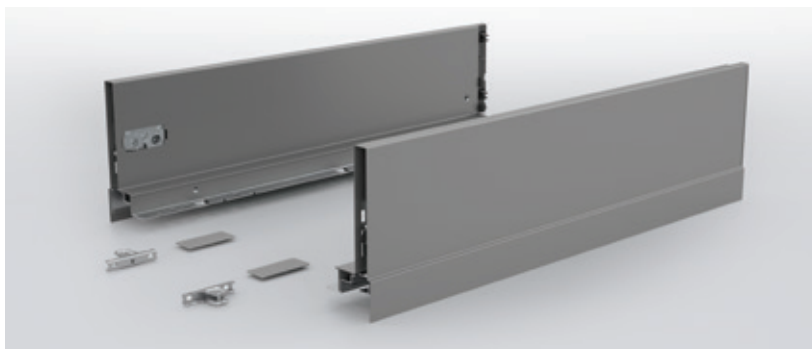
**X** = BOTTOM PANEL WIDTH      **K** = INTERNAL CABINET WIDTH      **Z** = BOTTOM PANEL LENGTH







# Drawer H120



**Double wall steel drawer height 120mm, epoxy finish, with strong design features and state-of-the-art technology**

## Benefits for the industry

- Large range of depth from 270 to 550 mm
- All steel front fixing mechanism for strong and secure fixing
- Vertical and horizontal adjustment in the front fixing mechanism
- Bottom fixing via ClawFix or screws without processing on the panel
- Decorative cover cap with possibility of customisation

## Benefits for the consumer

- Four metal finishes: Coffee Black and Storm Grey for high end look and perfect match for wooden and modern finishes, standard Grey and Polar White for a linear and clean look
- Optimised inner space thanks to straight outer and inner faces
- Easy to clean thanks to hygienic bottom lip and clean adjustment of every connection
- GreenSilver® technology for low carbon footprint production process and 100% recycle ability for reduced ecological impact

Code	Description	Packing
58.Y0B0.**.27.00010	Left and right drawer side 270	Industrial
58.Y0B0.**.30.00010	Left and right drawer side 300	Industrial
58.Y0B0.**.35.00010	Left and right drawer side 350	Industrial
58.Y0B0.**.40.00010	Left and right drawer side 400	Industrial
58.Y0B0.**.45.00010	Left and right drawer side 450	Industrial
58.Y0B0.**.50.00010	Left and right drawer side 500	Industrial
58.Y0B0.**.55.00010	Left and right drawer side 550	Industrial
<i>** colour codes: N2 = Coffee Black / S8 = Storm Grey / A6 = standard Grey / F1 = Polar White. Industrial packing composed by: 1 box with 10 right sides and 1 box with 10 left sides.</i>		
58.YM00.**.0000.000	Cover cap with FGV logo	1000 pcs
58.YM00.**.0000.00N	Cover cap without logo	1000 pcs
<i>** plastic colour codes: N2 = Coffee Black / S8 = Storm Grey / A6 = standard Grey / F1 = Polar White. It is possible to order embossed or silk-screen printing cover cap.</i>		
58.AY10.07.0000.000	Front brackets for self-tapping screws	200 pcs
58.AY20.07.0000.000	Front brackets with 10mm knock-in dowels	200 pcs
58.AY30.07.0000.000	Front brackets with 10mm expanding dowels	200 pcs
58.AY40.07.0000.000	Front brackets for self-tapping screws – Special pattern	200 pcs



Front brackets for self-tapping screws

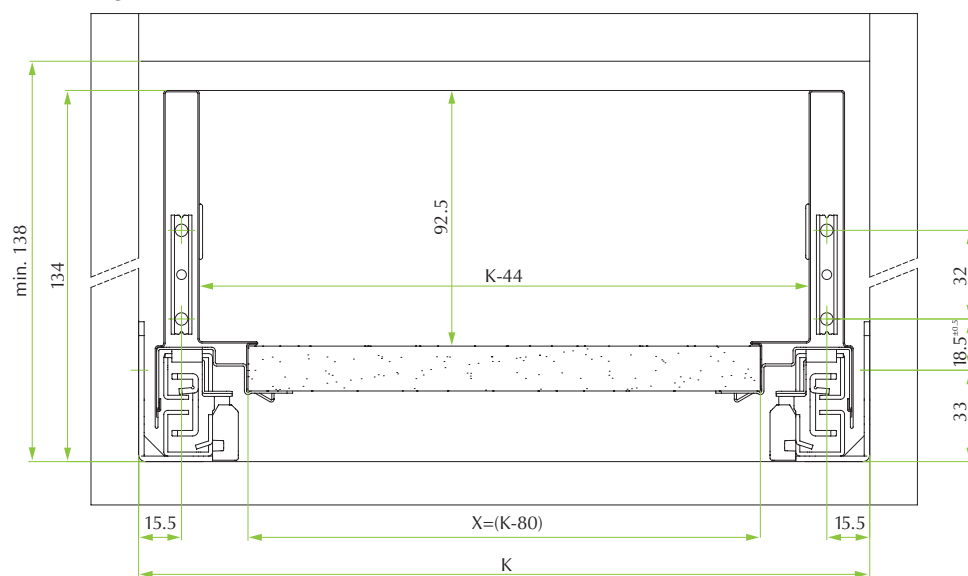


Front brackets with 10mm knock-in dowels

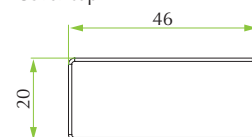


Front brackets with 10mm expanding dowels

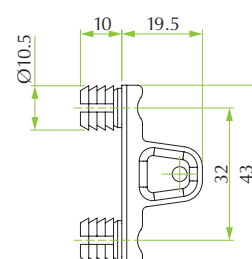
## Front drilling & dimensions



## Cover cap



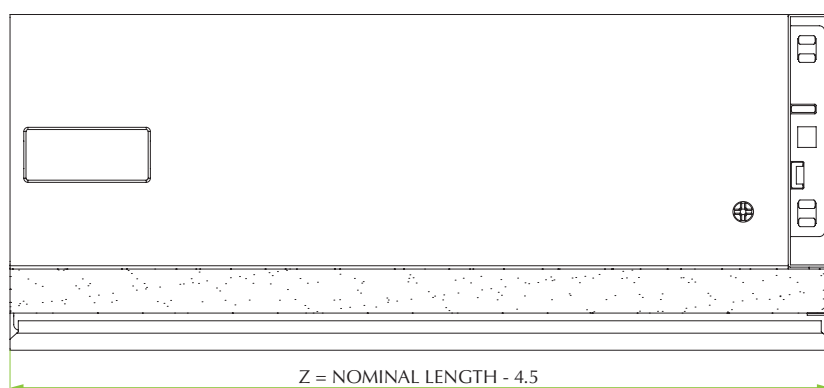
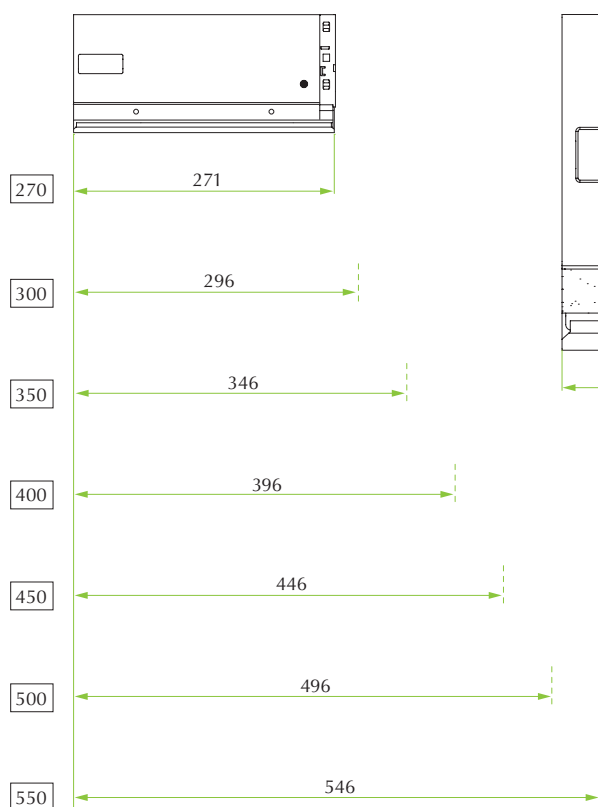
## Front bracket with 10mm dowels



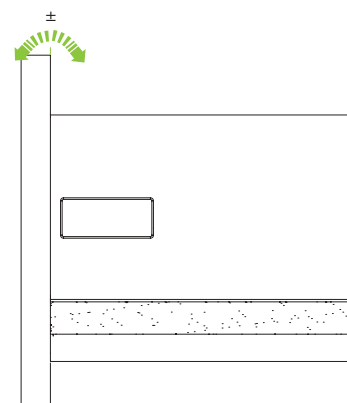
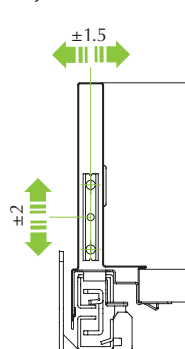
X = BOTTOM PANEL WIDTH

K = INTERNAL CABINET WIDTH

Z = BOTTOM PANEL LENGTH

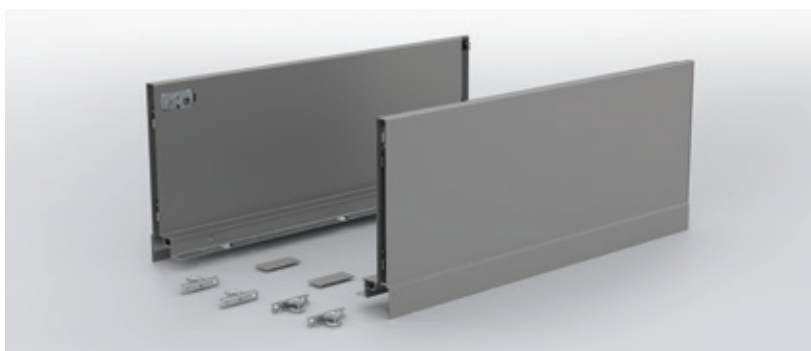


## Adjustments





# Drawer H180



**Double wall steel drawer height 180mm, epoxy finish, with strong design features and state-of-the-art technology**

## Benefits for the industry

- Large range of depth from 270 to 550 mm
- All steel front fixing mechanism for strong and secure fixing
- Vertical and horizontal adjustment in the front fixing mechanism
- Bottom fixing via ClawFix or screws without processing on the panel
- Decorative cover cap with possibility of customisation

## Benefits for the consumer

- Four metal finishes: Coffee Black and Storm Grey for high end look and perfect match for wooden and modern finishes, standard Grey and Polar White for a linear and clean look
- Optimised inner space thanks to straight outer and inner faces
- Easy to clean thanks to hygienic bottom lip and clean adjustment of every connection
- GreenSilver® technology for low carbon footprint production process and 100% recycle ability for reduced ecological impact

Code	Description	Packing
58.Y0S0.**.27.00010	Left and right drawer side 270	Industrial
58.Y0S0.**.30.00010	Left and right drawer side 300	Industrial
58.Y0S0.**.35.00010	Left and right drawer side 350	Industrial
58.Y0S0.**.40.00010	Left and right drawer side 400	Industrial
58.Y0S0.**.45.00010	Left and right drawer side 450	Industrial
58.Y0S0.**.50.00010	Left and right drawer side 500	Industrial
58.Y0S0.**.55.00010	Left and right drawer side 550	Industrial
<i>** colour codes: N2 = Coffee Black / S8 = Storm Grey / A6 = standard Grey / F1 = Polar White. Industrial packing composed by: 1 box with 10 right sides and 1 box with 10 left sides.</i>		
58.YM00.**.0000.000	Cover cap with FGV logo	1000 pcs
58.YM00.**.0000.00N	Cover cap without logo	1000 pcs
<i>** plastic colour codes: N2 = Coffee Black / S8 = Storm Grey / A6 = standard Grey / F1 = Polar White. It is possible to order embossed or silk-screen printing cover cap.</i>		
58.AY10.07.0000.000	Front brackets for self-tapping screws	200 pcs
58.AY20.07.0000.000	Front brackets with 10mm knock-in dowels	200 pcs
58.AY30.07.0000.000	Front brackets with 10mm expanding dowels	200 pcs
58.AY40.07.0000.000	Front brackets for self-tapping screws – Special pattern	200 pcs



Front brackets for self-tapping screws



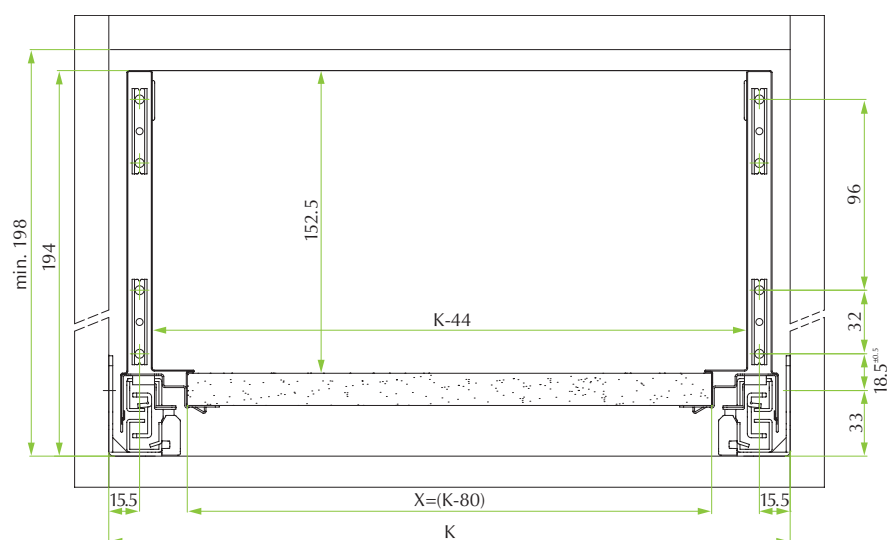
Front brackets with 10mm knock-in dowels



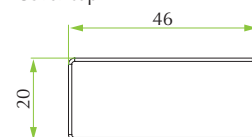
Front brackets with 10mm expanding dowels



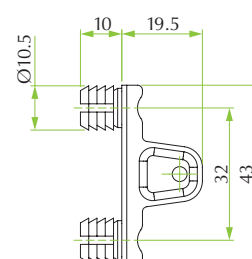
## Front drilling & dimensions



Cover cap



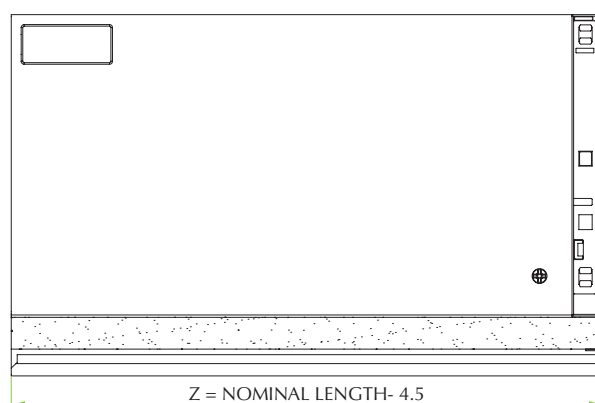
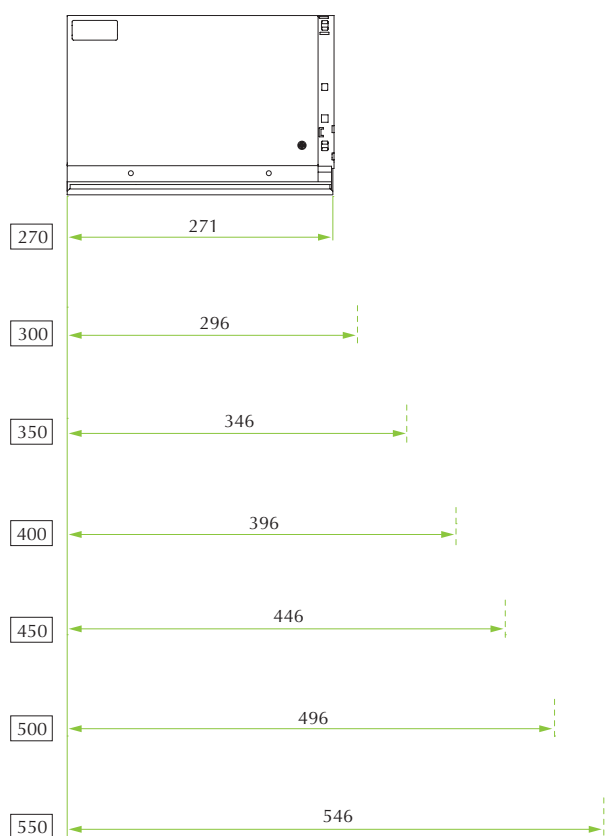
Front bracket with 10mm dowels



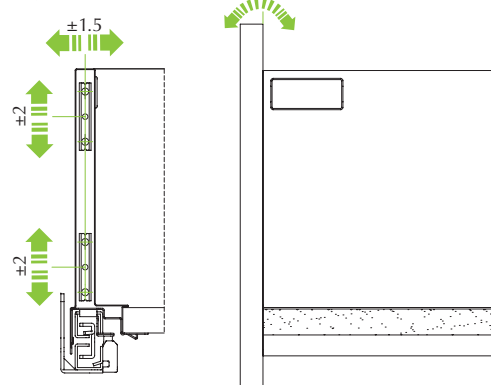
X = BOTTOM PANEL WIDTH

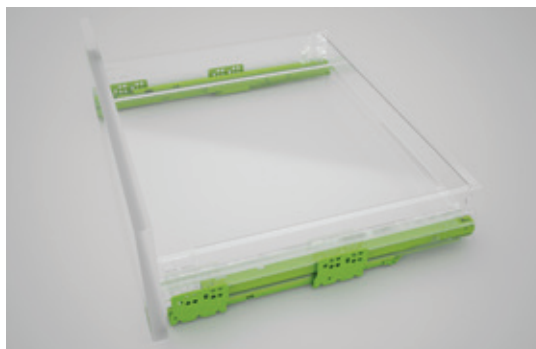
K = INTERNAL CABINET WIDTH

Z = BOTTOM PANEL LENGTH



Adjustments





## Full extension damped slides, zink finish, for high performance and smooth action

### Benefits for the industry

- Large range of length from 270 to 550 mm
- High 45kg standard load for ease of use throughout the applications
- High side stability thanks to Dual-Synchro® rack-and-pinion for smooth action
- New generation SlowMotion® damping with long damping way for guaranteed drawer closure under adverse conditions
- Very stiff construction for low drop under load
- Slide-click fixing of drawer on the slide for easy and safe connection

### Benefits for the consumer

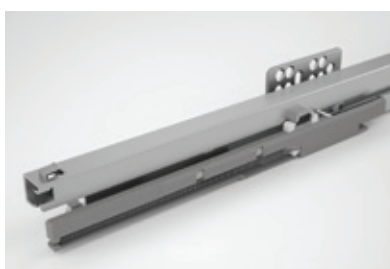
- Very smooth action and increased glide ability thanks to rollers with special design and materials
- Adaptive SlowMotion® damping for silent and majestic closing under all load circumstances
- Long lasting life thanks to high quality material and performance design

Code	Description	Packing
58.YEF0.07.27.X0000	Left and right drawer slide 270 (1 pair)	Industrial
58.YEF0.07.30.X0000	Left and right drawer slide 300 (1 pair)	Industrial
58.YEF0.07.35.X0000	Left and right drawer slide 350 (1 pair)	Industrial
58.YEF0.07.40.X0000	Left and right drawer slide 400 (1 pair)	Industrial
58.YEF0.07.45.X0000	Left and right drawer slide 450 (1 pair)	Industrial
58.YEF0.07.50.X0000	Left and right drawer slide 500 (1 pair)	Industrial
58.YEF0.07.55.X0000	Left and right drawer slide 550 (1 pair)	Industrial

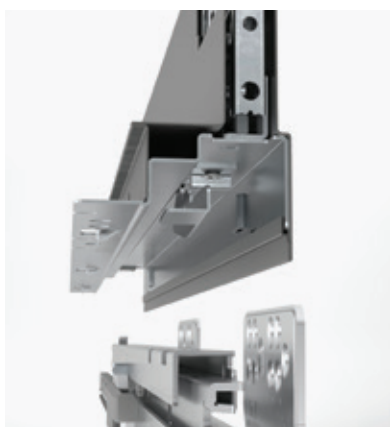
Industrial packing composed by: 1 box with 10 right slides and 1 box with 10 left slides.



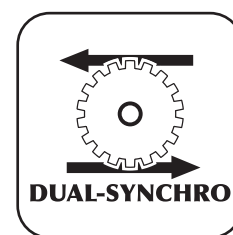
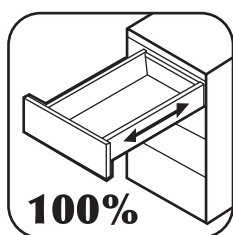
*Dual-Synchro®  
for high side stability*



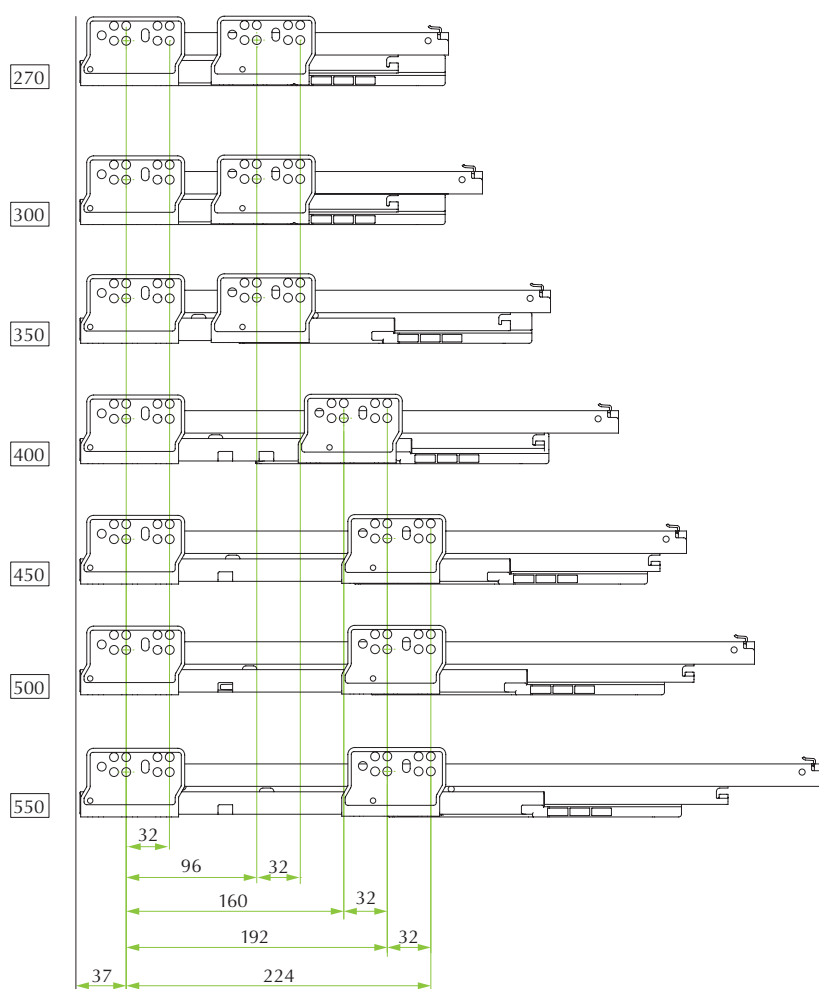
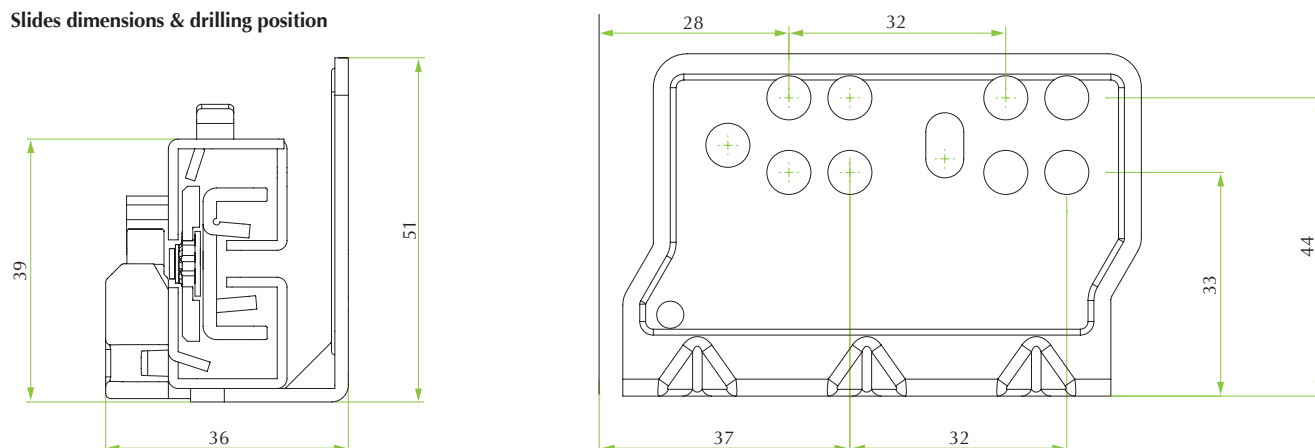
*SlowMotion®  
adaptive damping*



*Tool-less slide-fixing  
of drawer on slide*



Slides dimensions & drilling position



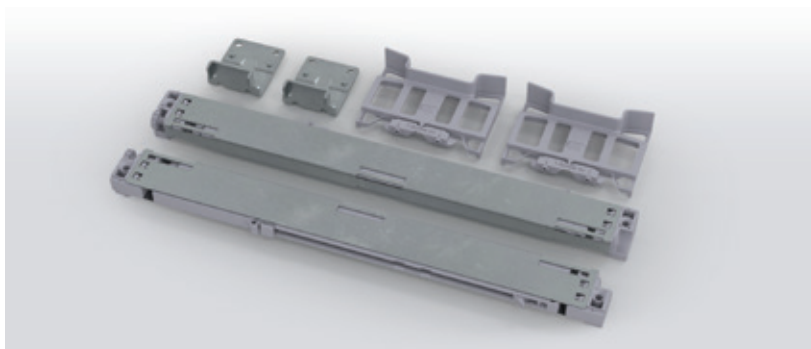
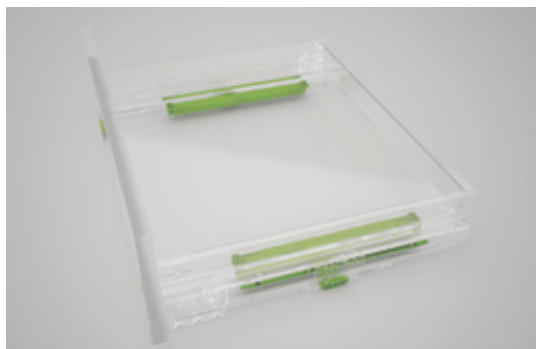
Nominal length	Slide length
270	275
300	299
350	349
400	399
450	449
500	499
550	549

Cabinet depth = slide length + 3mm





# OneTouch+SlowMotion technology



## Add-on device for hand-less furniture with integrated SlowMotion technology

### Benefits for the industry

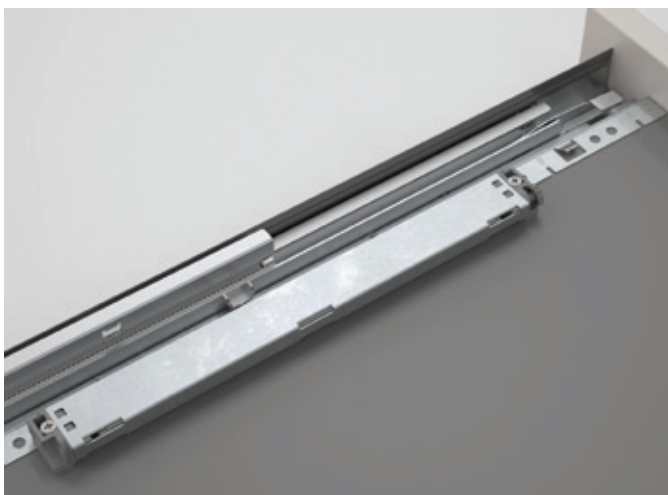
- Efficient and easy to install on standard Ten<sup>2</sup> drawer
- Mechanical solution: no wires or electrical connection required
- Minimum and adjustable gap between the door and the cabinet
- It works normally even if the drawer is pulled outwards
- It can be retrofitted anytime

### Benefits for the consumer

- Just a light touch and the drawer opens by itself
- Smooth and silent closure without any effort
- Invisible installation under the drawer
- Suitable for all kind of hand-less furniture

Code	Description	Packing
58.MY01.0600.00000	Kit OneTouch+SlowMotion technology	20 pcs

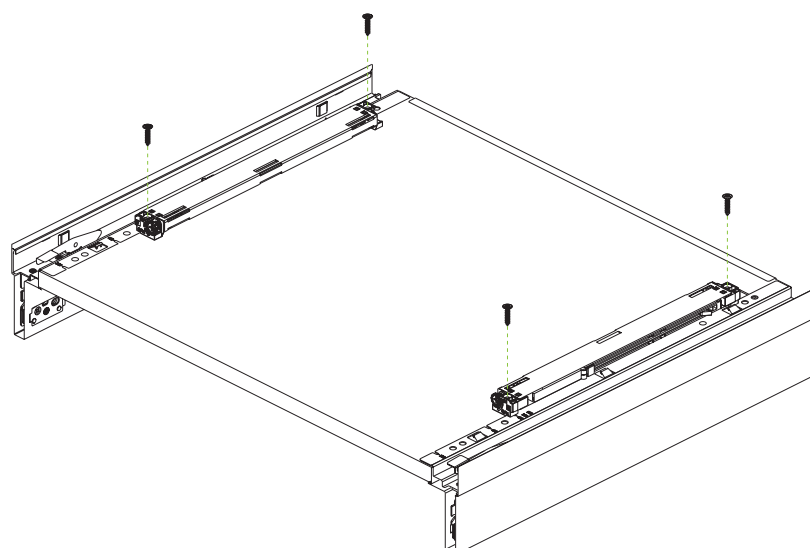
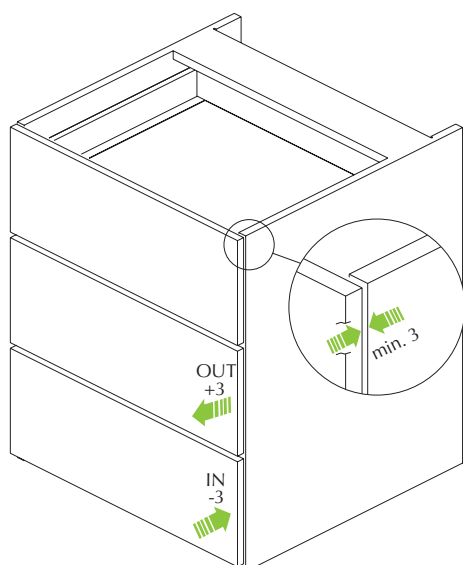
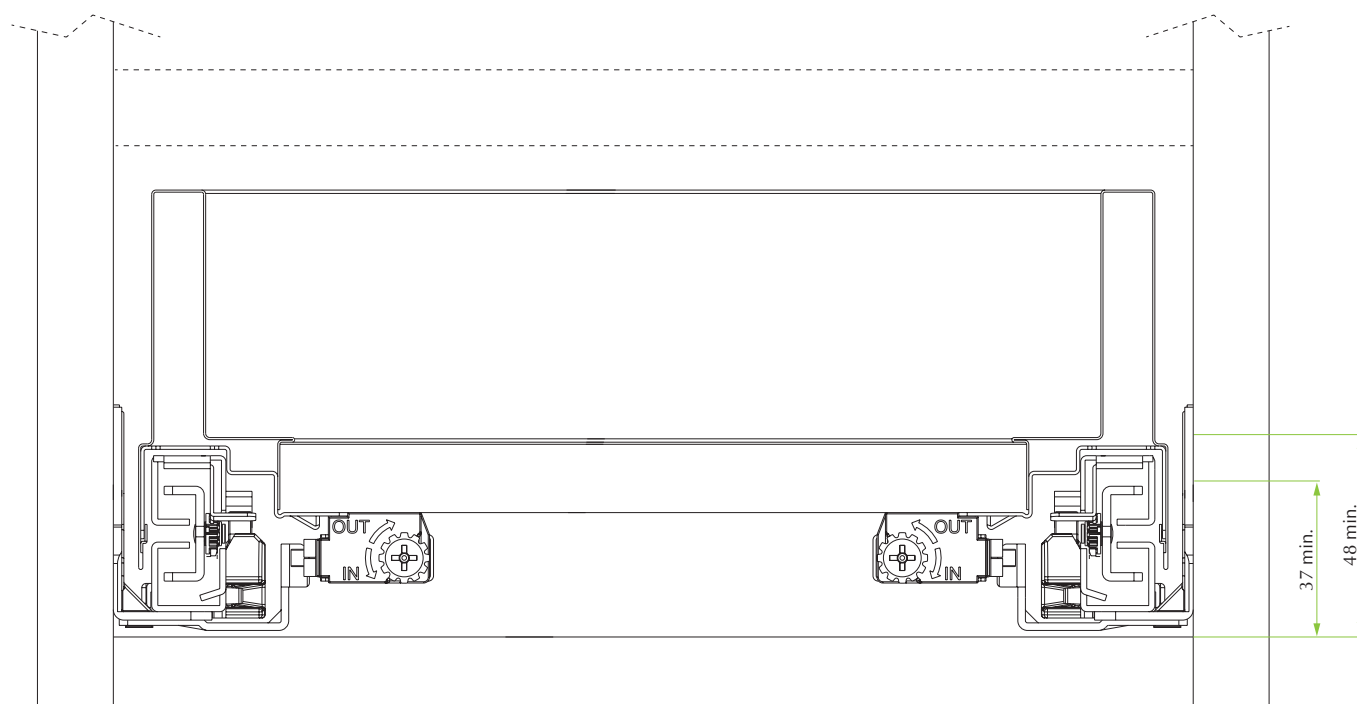
*Kit consisting of 2 OneTouch+SlowMotion devices, 2 drilling jig, 2 brackets, fixing screws.  
-- cabinet side panel thickness: 16/18 (mm).*



*View of the OneTouch+SlowMotion device assembled under the drawer*

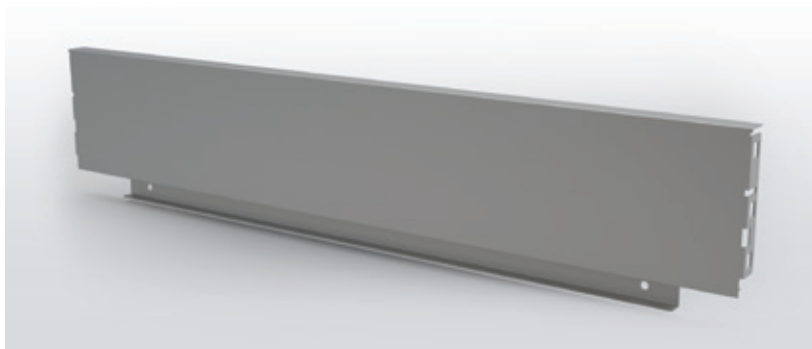


# OneTouch+SlowMotion technology application





# Steel back panels



## Steel back panel, epoxy finish, for consistent look and strong construction

### Benefits for the industry

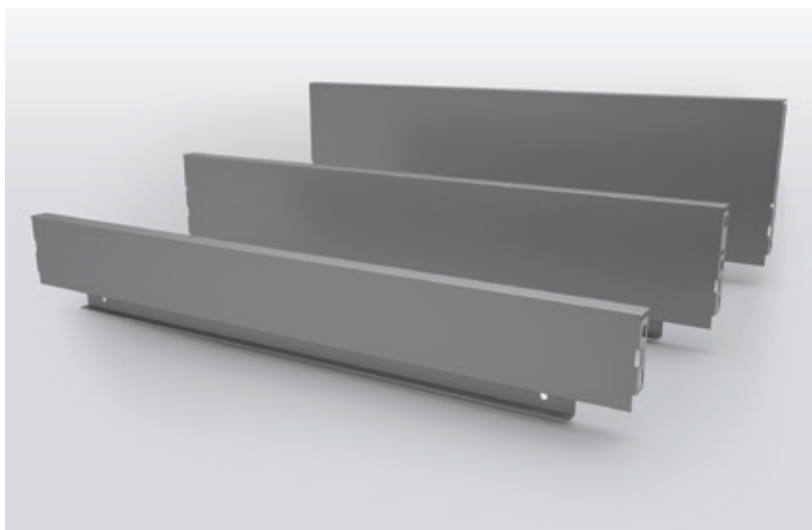
- Three heights: 90, 120 and 180 mm
- Ten widths from 300 to 1200 mm
- Custom width upon request
- Available for 16 and 18 mm cabinet side panel thickness
- Thick material for strong construction and stability

### Benefits for the consumer

- Four standard finishes matching perfectly the drawer finish: Coffee Black, Storm Grey, standard Grey and Polar White
- Perfect side finish and suppression of all open holes for high quality perception

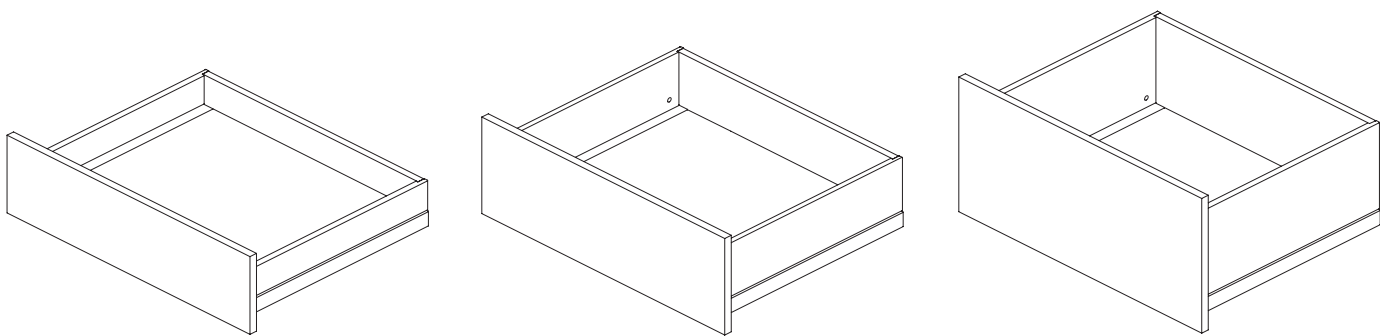
Code	Description	Packing
58.PYPA.**.^- -.000	Steel back panel H90	20 pcs
58.PYPB.**.^- -.000	Steel back panel H120	10 pcs
58.PYPS.**.^- -.000	Steel back panel H180	10 pcs

\*\* colour codes: N2 = Coffee Black / S8 = Storm Grey / A6 = standard Grey / F1 = Polar White.  
^^ back panel width: 30/35/40/45/50/60/80/90/10/12 (example 45 stands for 450mm cabinet width).  
- - cabinet side panel thickness: 16/18 (mm).



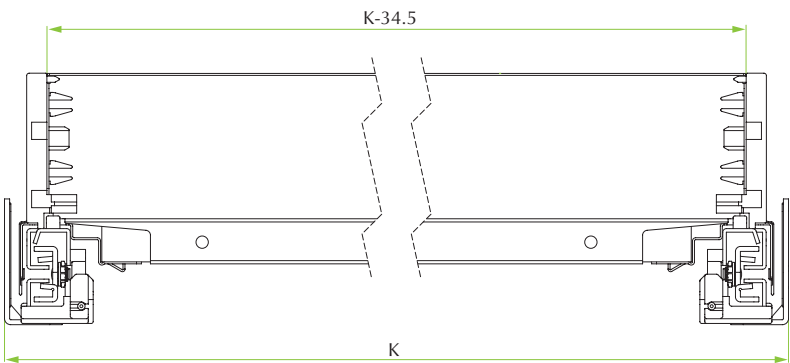
Three steel back panel heights



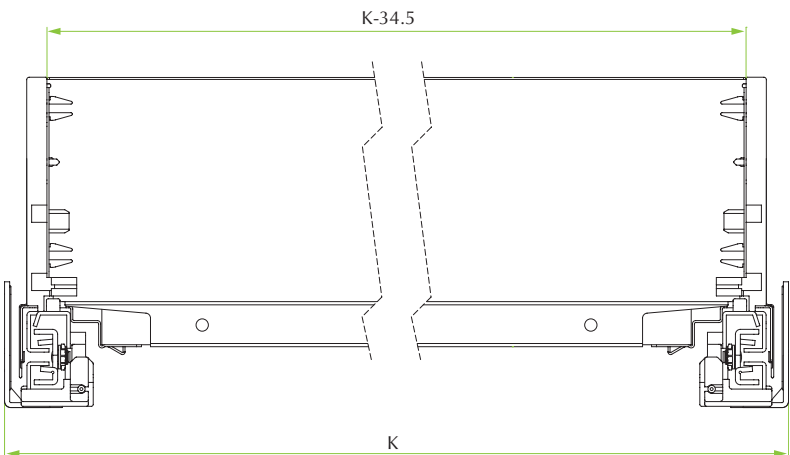


Steel back panel

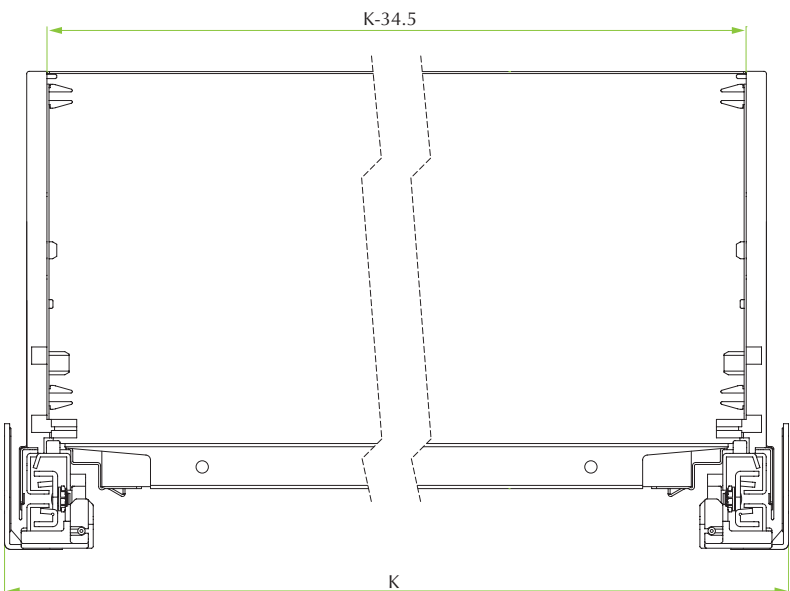
Drawer H90



Drawer H120

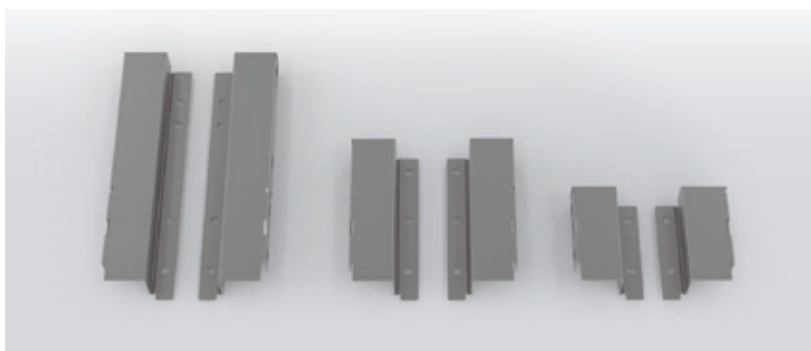
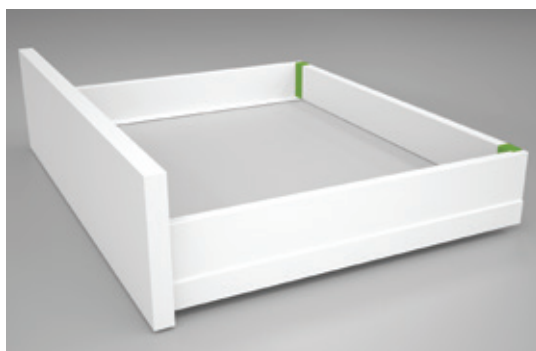


Drawer H180



K = INTERNAL CABINET WIDTH

# **Back fixings for wooden back panel**



## **Steel back fixings, epoxy finish, for versatility in dimensions and design**

### **Benefits for the industry**

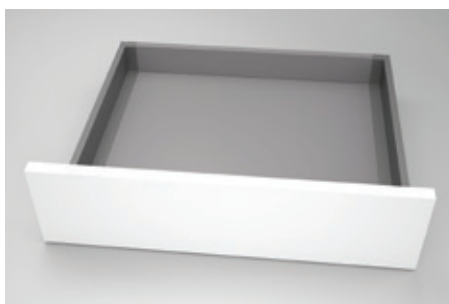
- Three heights: 90, 120 and 180 mm
- Suitable also for use with extra-high wooden backs
- Easy assembling of the wooden back panel

### **Benefits for the consumer**

- Four standard finishes matching perfectly the drawer finish: Coffee Black, Storm Grey, standard Grey and Polar White
- Perfect side finish and suppression of all open holes for high quality perception

Code	Description	Packing
58.AYPA.**.0000.000	Set of steel back fixings H90	50 sets
58.AYPB.**.0000.000	Set of steel back fixings H120	50 sets
58.AYPS.**.0000.000	Set of steel back fixings H180	50 sets

**\*\* colour codes:** N2 = Coffee Black / S8 = Storm Grey / A6 = standard Grey / F1 = Polar White.



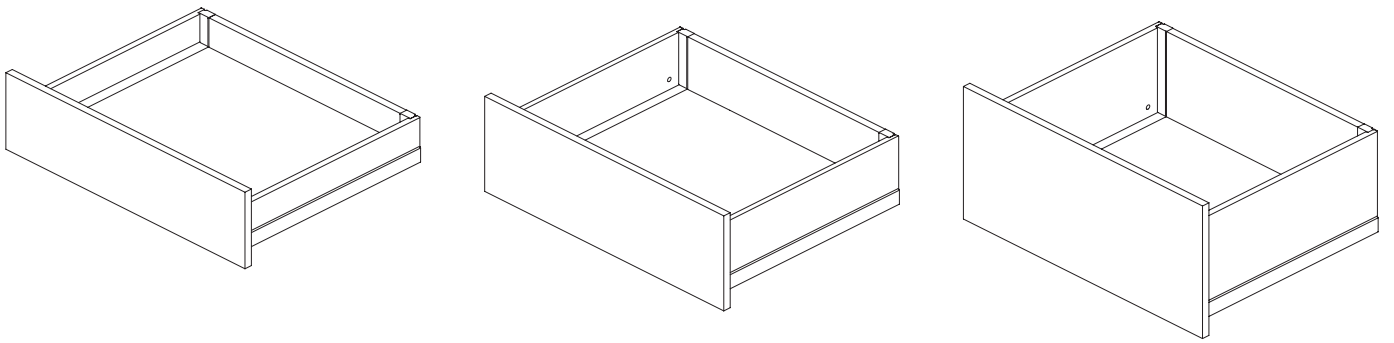
*Back fixing H90*



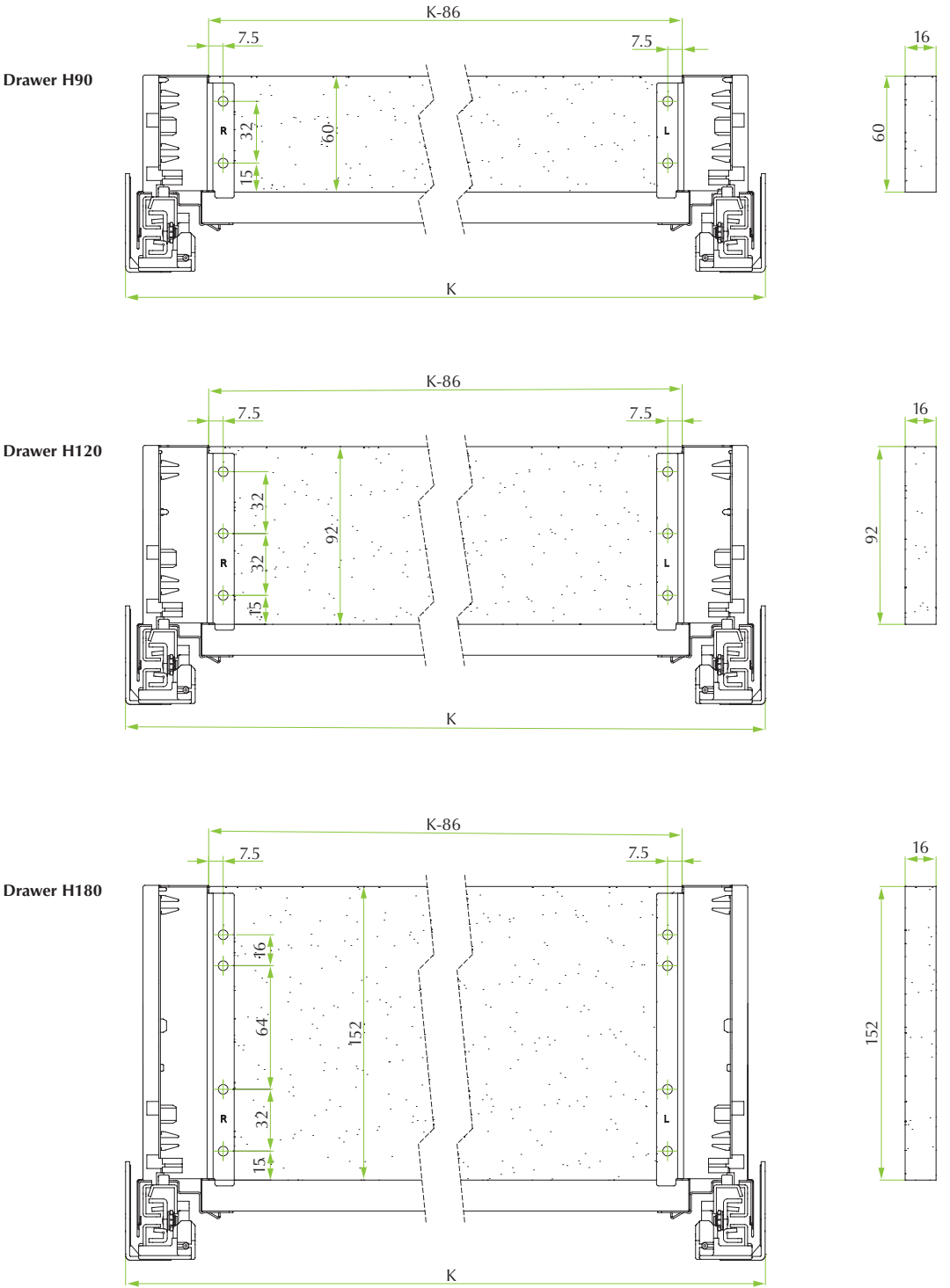
*Back fixing H180 with railing*



*Back fixing H180*



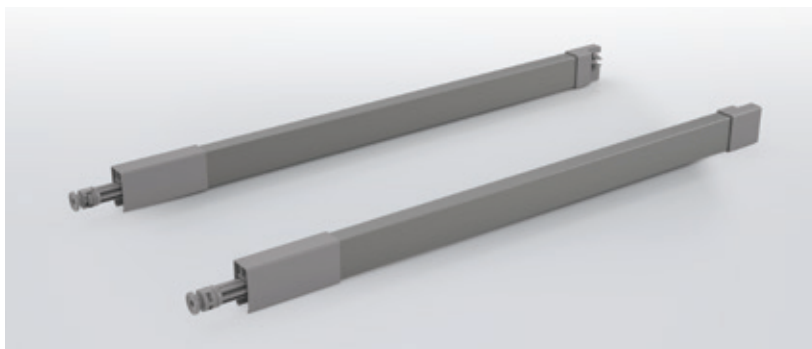
Wooden back panel - Back view



K = INTERNAL CABINET WIDTH



# Rectangular railing system



## Steel railing bars, epoxy finish, for perfect volume management and strong construction

### Benefits for the industry

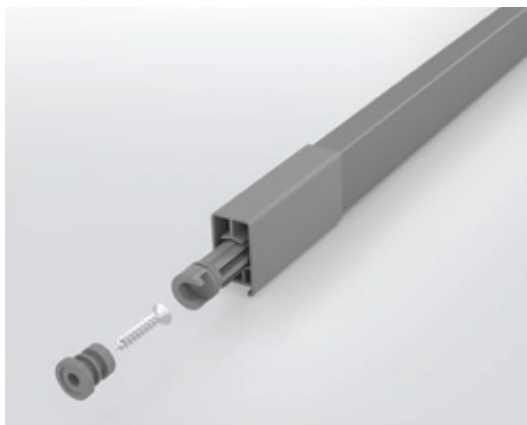
- Seven dimensions adapted to each drawer depth
- Simple click-on bracket for safe back fixing on steel panel or bracket for wooden panel
- Integrated inclination adjustment for +/- 3.5mm

### Benefits for the consumer

- Four standard metal finishes matching perfectly the drawer finish: Coffee Black, Storm Grey, standard Grey and Polar White
- Colour and finish of plastic components enhances quality feel
- Excellent side retention in high drawer applications

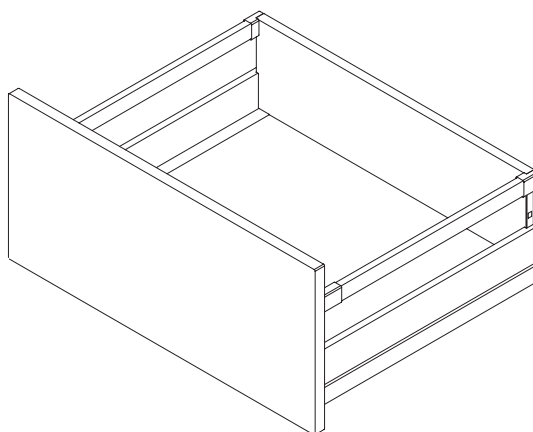
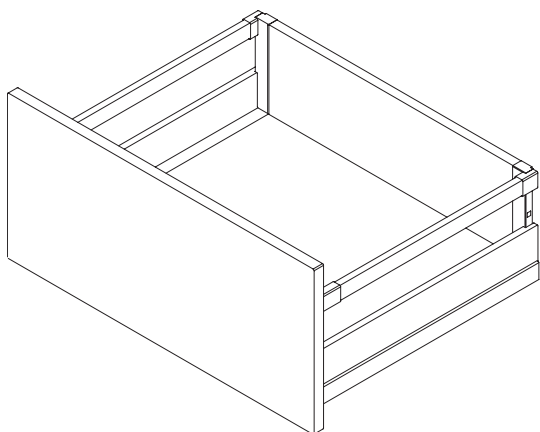
Code	Description	Packing
58.RYD3.**.°°.0L000	Left steel rectangular railing screw-on	40 pcs
58.RYD3.**.°°.0R000	Right steel rectangular railing screw-on	40 pcs

*\*\* colour codes: N2 = Coffee Black / S8 = Storm Grey / A6 = standard Grey / F1 = Polar White.  
°° railing tube dimensions: 27/30/35/40/45/50/55  
(example 27 stands for 270mm railing length/drawer depth).*

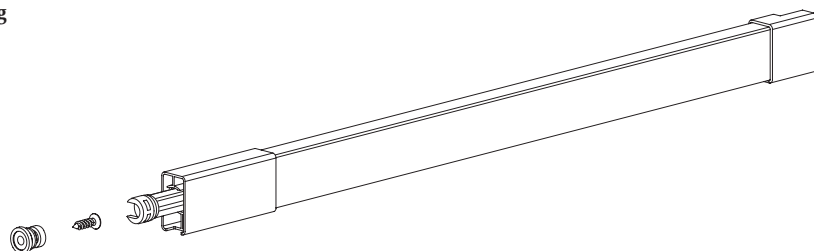


Screw-on railing





## Screw-on railing



### Nominal length

270

300

350

400

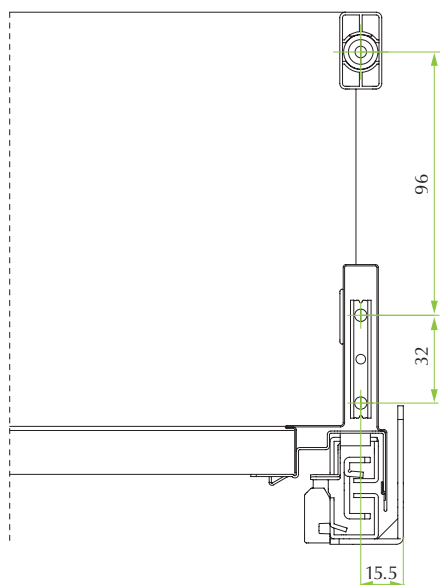
450

500

550

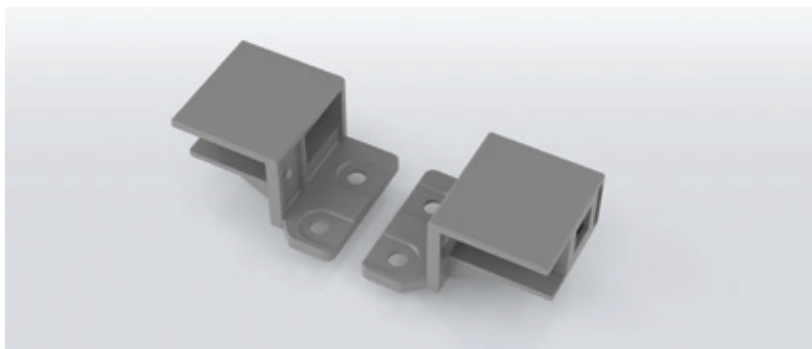


## Application





# Back fixing brackets for rectangular railing



## Plastic back fixing brackets for rectangular railing, for versatility in dimensions and design pan drawer

### Benefits for the industry

- Railing application for drawers with high wooden back
- Versatile application for standard or internal pan drawer
- Free fixing positioning at any height to the wooden back panel

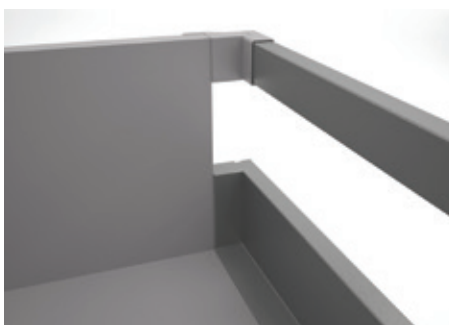
### Benefits for the consumer

- Versatile application for standard or internal pan drawer
- Excellent side retention for high drawer applications

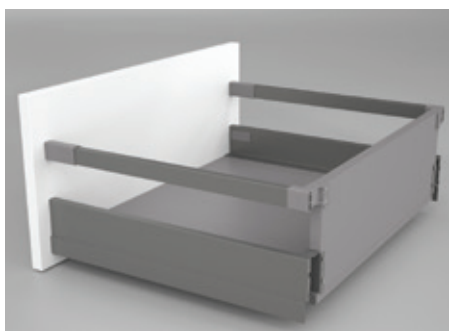
Code	Description	Packing
58.AYPW.**.0000000	Set of brackets for rectangular railing fixing to the high wooden back	50 sets

*\*\*plastic colour codes: N2 = Coffee Black / S8 = Storm Grey / A6 = standard Grey / F1 = Polar White.*

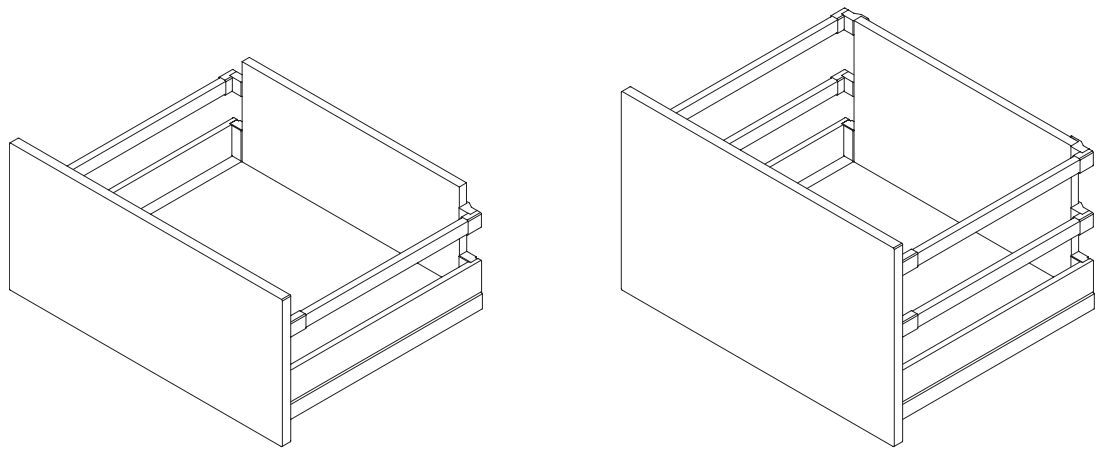
***To be combined with an high back wooden panel***



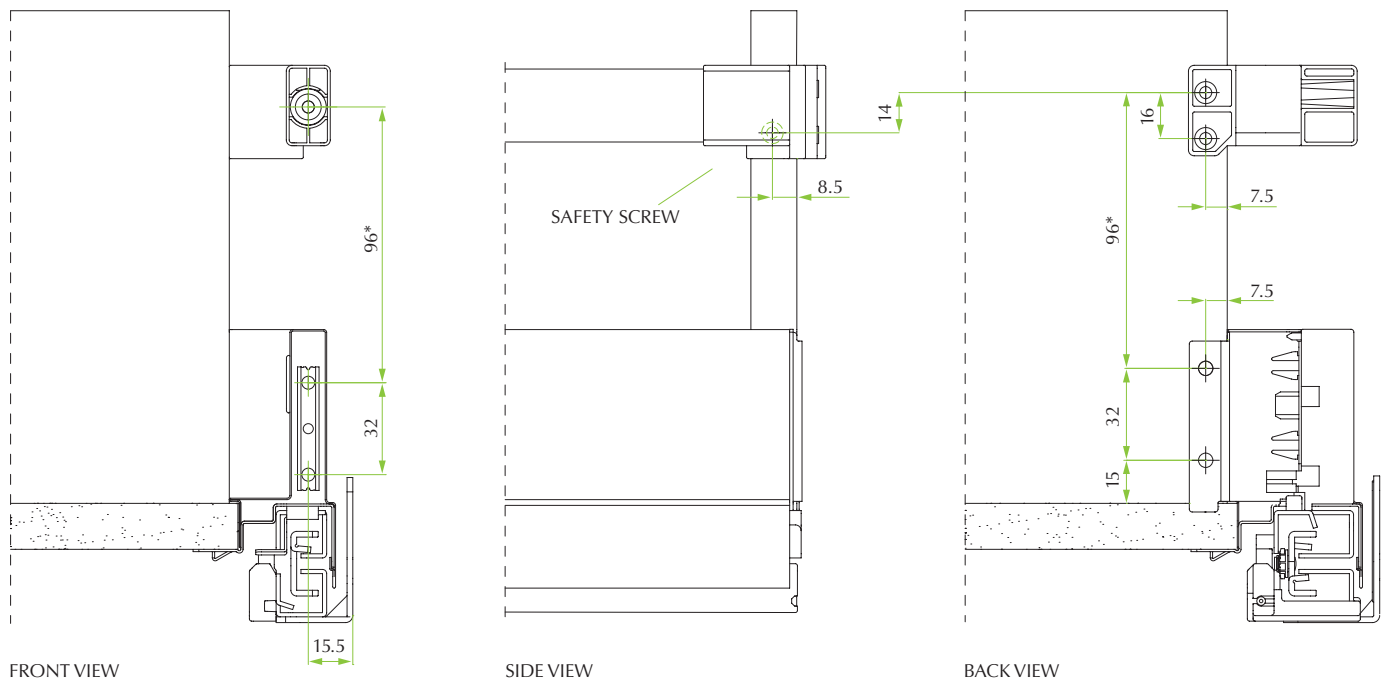
*Railing brackets application*



*Pan drawer application*

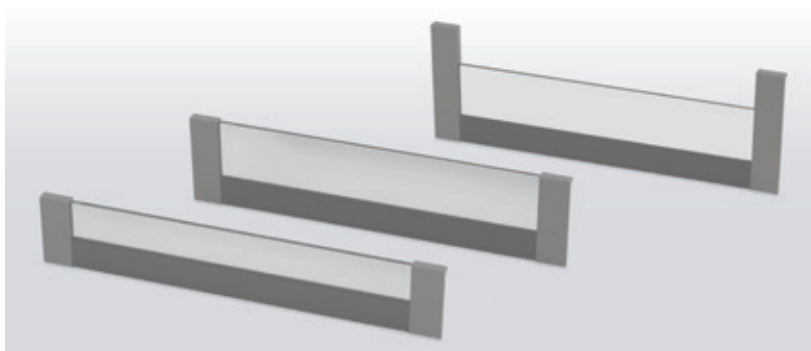
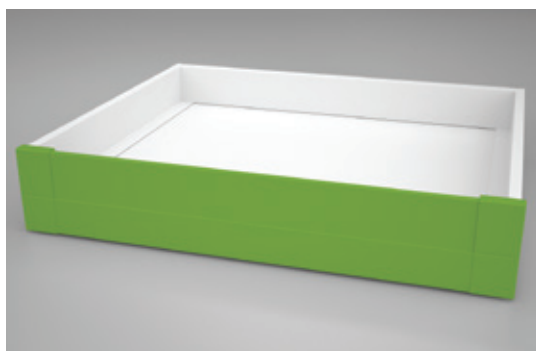


### Railing brackets application with wooden back panel



\*RECOMMENDED POSITION

# **IN** internal drawer - crystal front



## **IN kit for 4-sided internal drawer for elegant and practical function**

### **Benefits for the industry**

- Plastic frontal brackets with improved fixing system to ensure a stronger coupling and a perfect match with lateral panels
- Brackets available in 3 heights: 90, 120 and 180 mm
- Crystal front system consisting of crystal profile to be cut on size of the drawer width and to be used with lower aluminium profile and frontal bracket adapters
- No need for edge banding on the front of the drawer bottom
- Standard clip-on function for ease of assembly

### **Benefits for the consumer**

- Four standard metal finishes matching perfectly the drawer finish: Coffee Black, Storm Grey, standard Grey and Polar White
- Very practical function behind turning or sliding doors
- High-end look thanks to elegant materials and perfect finishing

## **IN drawer H90**

Code	Description	Packing
58.AY4A.**.V000.000	Set of plastic frontal brackets for internal drawer H90	50 sets
58.PY4A.0C.1093.000	Crystal front profile - 1093mm to be cut on size	5 pcs
<i>Clear crystal front profile, 8mm thickness.</i>		
58.PY4V.**.1082.000	Aluminium lower frontal profile – 1082mm to be cut on size - for crystal profile	10 pcs

**\*\* colour codes:** N2 = Coffee Black / S8 = Storm Grey / A6 = standard Grey / F1 = Polar White.

## **IN drawer H120**

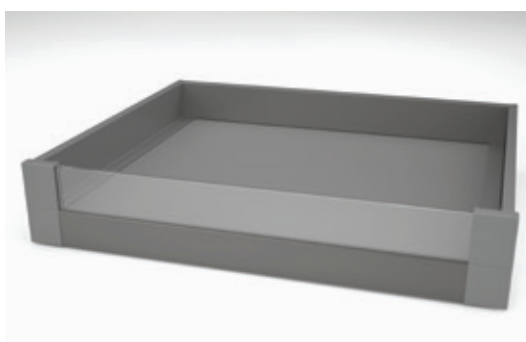
Code	Description	Packing
58.AY4B.**.V000.000	Set of plastic frontal brackets for internal drawer H120	50 sets
58.PY40.0C.1093.000	Crystal front profile - 1093mm to be cut on size	5 pcs
<i>Clear crystal front profile, 8mm thickness.</i>		
58.PY4V.**.1082.000	Aluminium lower frontal profile – 1082mm to be cut on size - for crystal profile	10 pcs

**\*\* colour codes:** N2 = Coffee Black / S8 = Storm Grey / A6 = standard Grey / F1 = Polar White.

## **IN drawer H180**

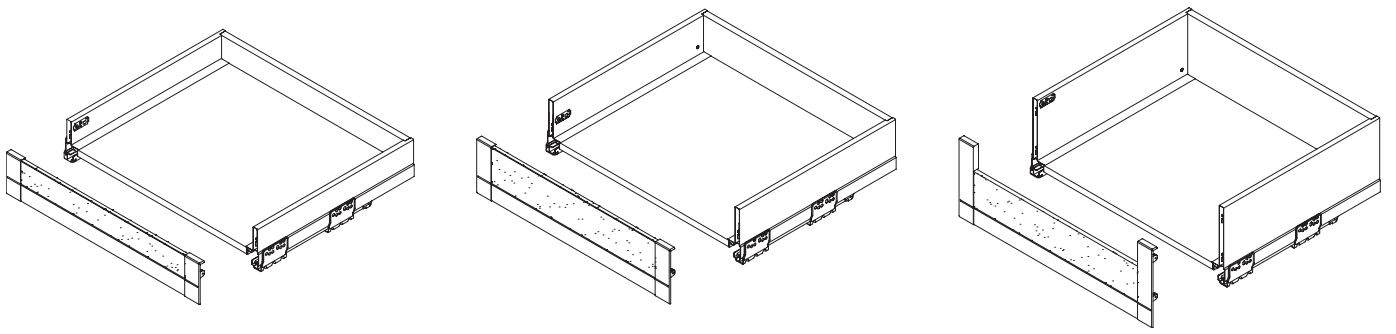
Code	Description	Packing
58.AY4S.**.V000.000	Set of plastic frontal brackets for internal drawer H180	50 sets
58.PY40.0C.1093.000	Crystal front profile - 1093mm to be cut on size	5 pcs
<i>Clear crystal front profile, 8mm thickness.</i>		
58.PY4V.**.1082.000	Aluminium lower frontal profile – 1082mm to be cut on size - for crystal profile	10 pcs

**\*\* colour codes:** N2 = Coffee Black / S8 = Storm Grey / A6 = standard Grey / F1 = Polar White.

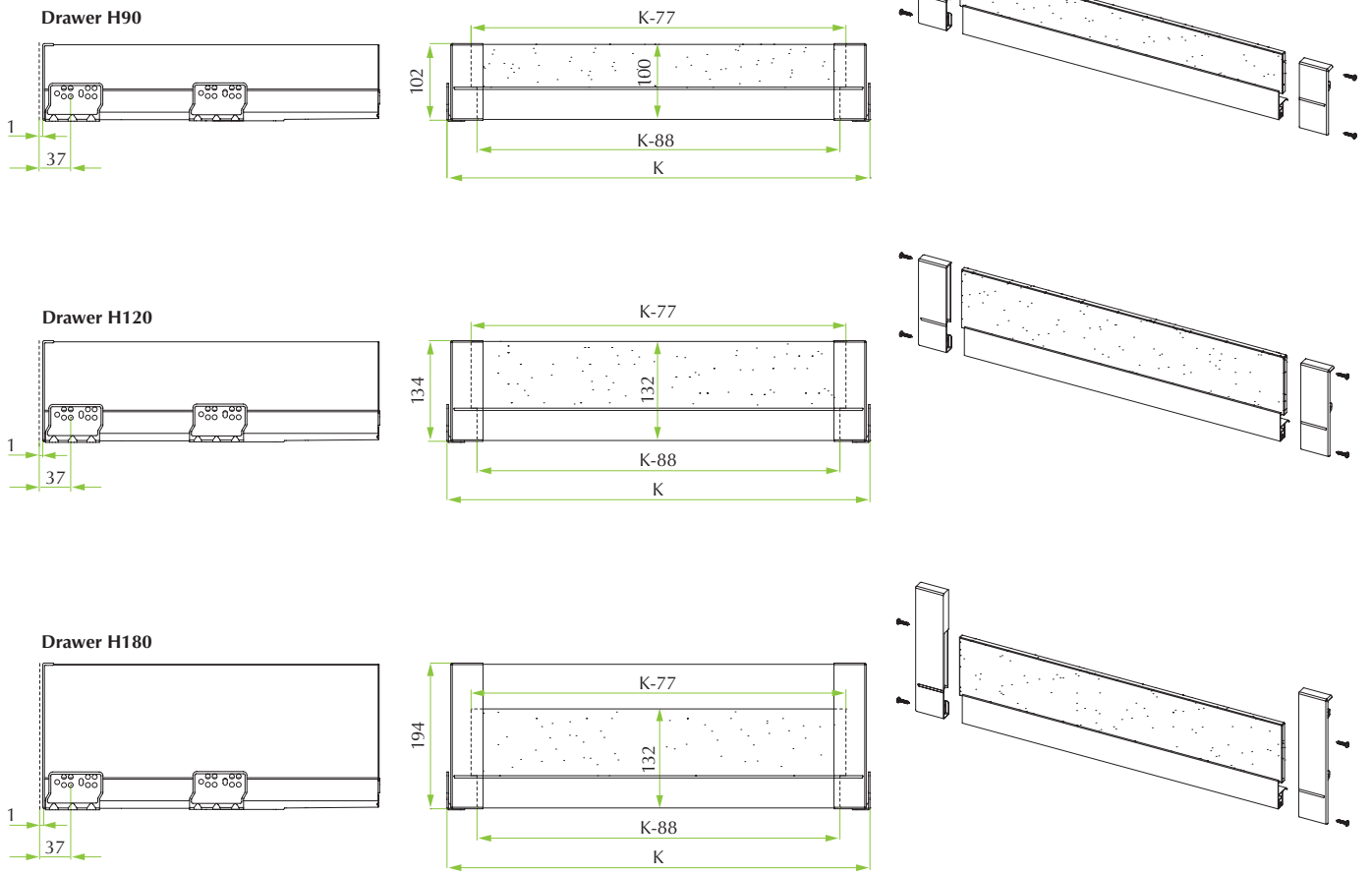


*Solution with crystal front*

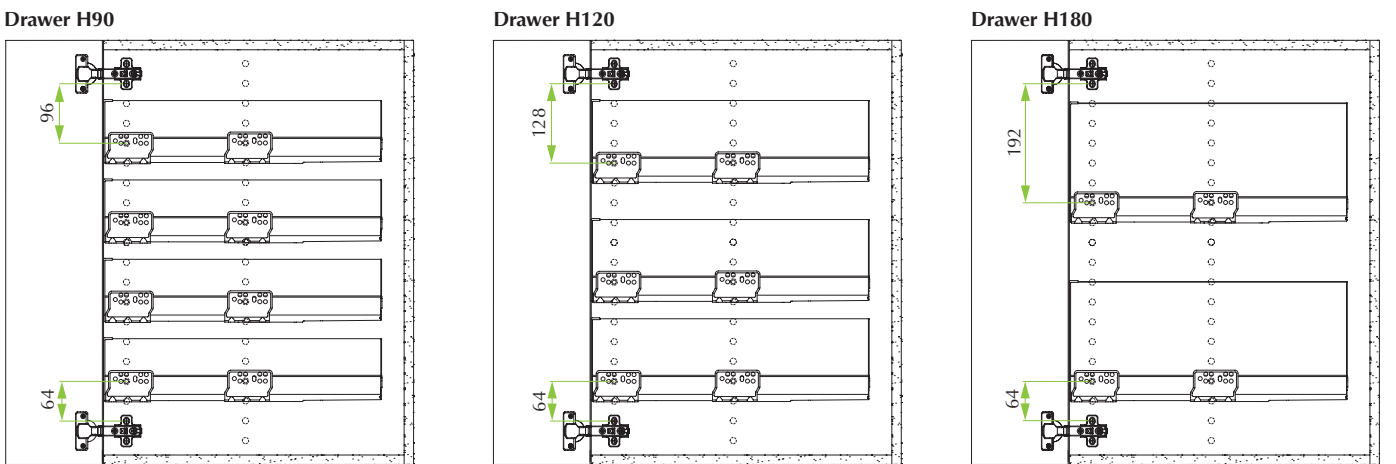




### Drilling & front dimensions

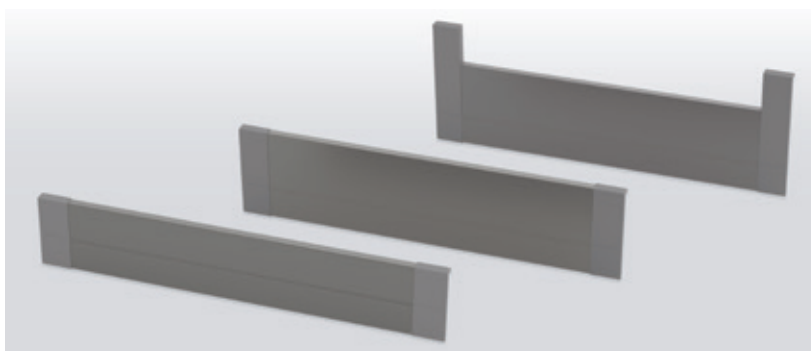
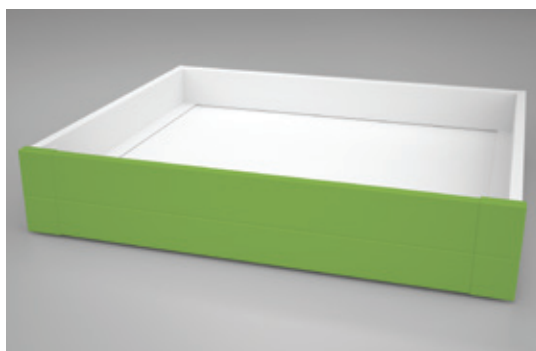


### Applications





# IN internal drawer - aluminium front



## IN kit for 4-sided internal drawer for elegant and practical function

### Benefits for the industry

- Plastic frontal brackets with improved fixing system to ensure a stronger coupling and a perfect match with lateral panels
- Brackets available in 3 heights: 90, 120 and 180 mm
- Aluminium front with elegant shape to be cut on size of the drawer width and to be used with frontal brackets
- No need for edge banding on the front of the drawer bottom
- Standard clip-on function for ease of assembly

### Benefits for the consumer

- Four standard metal finishes matching perfectly the drawer finish: Coffee Black, Storm Grey, standard Grey and Polar White
- Very practical function behind turning or sliding doors
- High-end look thanks to elegant materials and perfect finishing

### IN drawer H90

Code	Description	Packing
58.AY4A.**.0000.000	Set of plastic frontal brackets for internal drawer H90	50 sets
58.PY4A.**.1082.000	Aluminium front panel – 1082mm to be cut on size	10 pcs

**\*\* colour codes:** N2 = Coffee Black / S8 = Storm Grey / A6 = standard Grey / F1 = Polar White.

### IN drawer H120

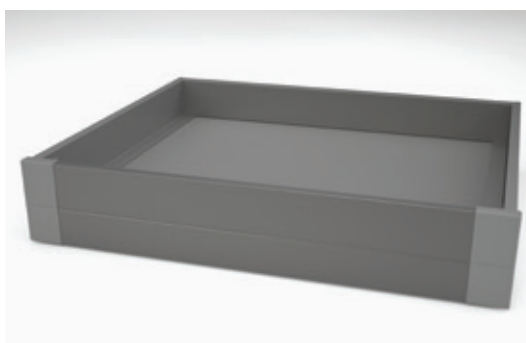
Code	Description	Packing
58.AY4B.**.0000.000	Set of plastic frontal brackets for internal drawer H120	50 sets
58.PY40.**.1082.000	Aluminium front panel – 1082mm to be cut on size	10 pcs

**\*\* colour codes:** N2 = Coffee Black / S8 = Storm Grey / A6 = standard Grey / F1 = Polar White.

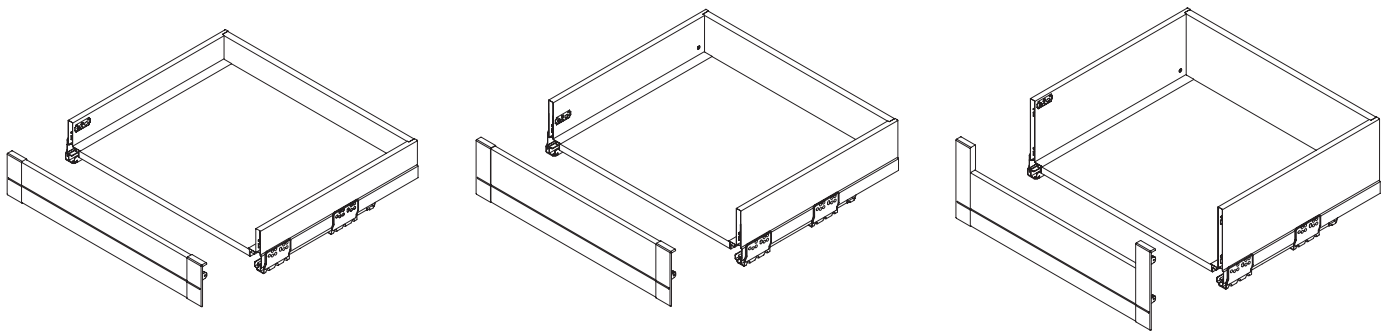
### IN drawer H180

Code	Description	Packing
58.AY4S.**.0000.000	Set of plastic frontal brackets for internal drawer H180	50 sets
58.PY40.**.1082.000	Aluminium front panel – 1082mm to be cut on size	10 pcs

**\*\* colour codes:** N2 = Coffee Black / S8 = Storm Grey / A6 = standard Grey / F1 = Polar White.

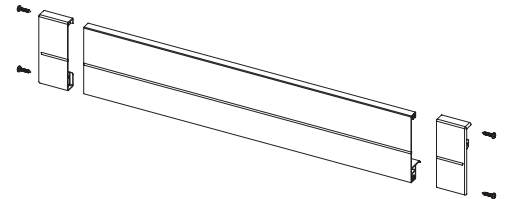
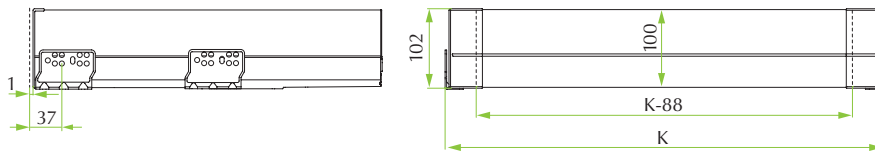


Solution with aluminium front

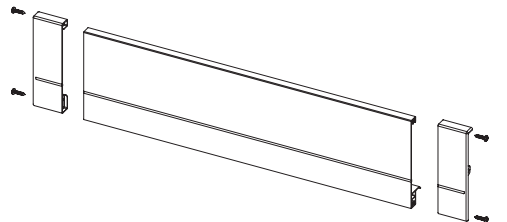
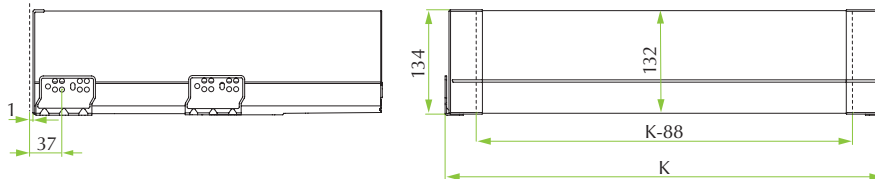


## Drilling & front dimensions

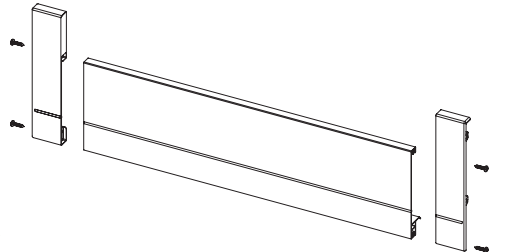
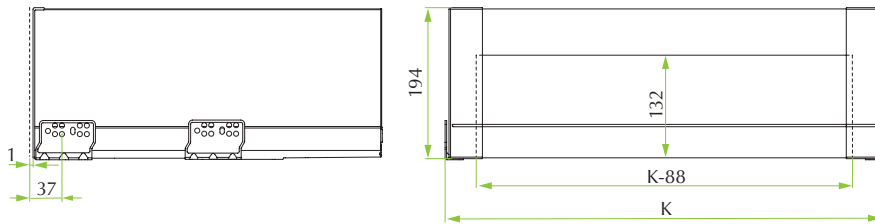
Drawer H90



Drawer H120

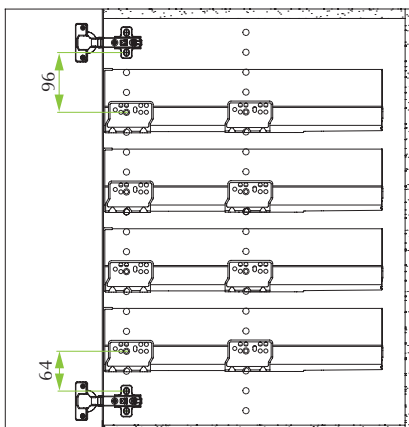


Drawer H180

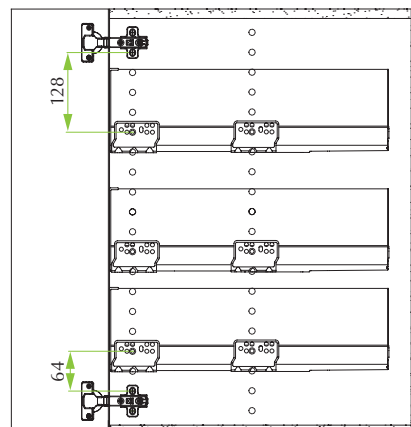


## Applications

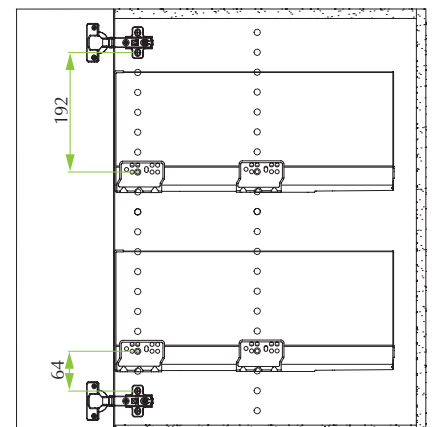
Drawer H90



Drawer H120

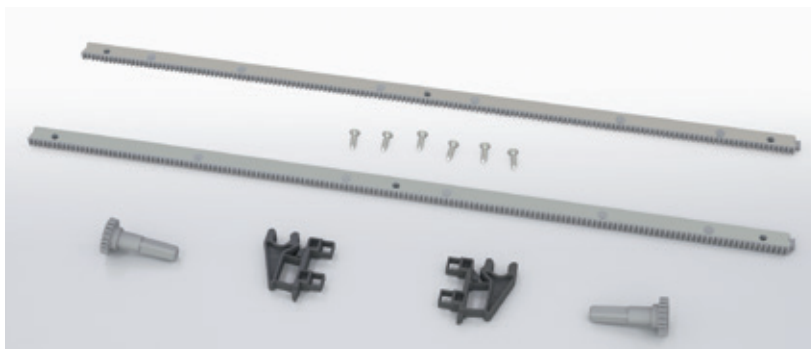
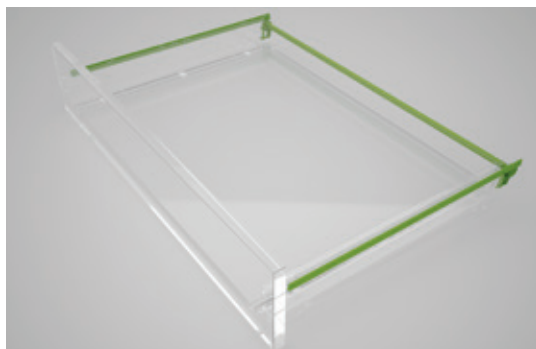


Drawer H180





# Stabilizer kit



## Stabilizer kit ideal for wide drawer applications

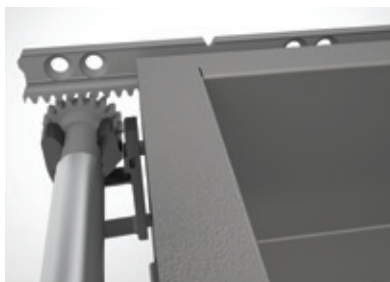
### Benefits for the industry

- For a better stability of the complete range of drawer widths
- Recommended for drawers and pan drawers over 900mm of width
- Excellent drawer sliding motion
- Controlled and silent movement

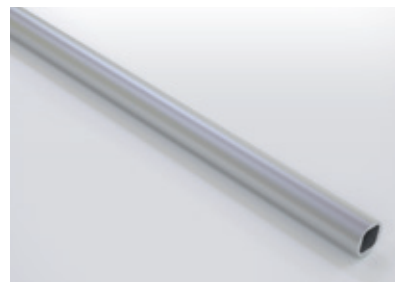
### Benefits for the consumer

- Perfect drawer stability also in a full load capacity condition
- Smooth movement and silent sliding of the drawer
- Discrete design for a non-invasive solution

Code	Description	Packing
58.CYA0.06.0000000	Stabilizer kit for drawer	50 kits
<i>Kit composed by: 2 racks, 2 pinions, 2 back brackets, 6 selftapping screws (Ø4x12 mm). The racks are pre-cut based on 450/500/550 mm drawer depths.</i>		
58.CXT0.0A.120.0000	Stabilizer connecting bar - 1200	50 pcs
<i>The anodized aluminium stabilizer bar with 1200mm length needs to be cut to size based on the drawer width.</i>		



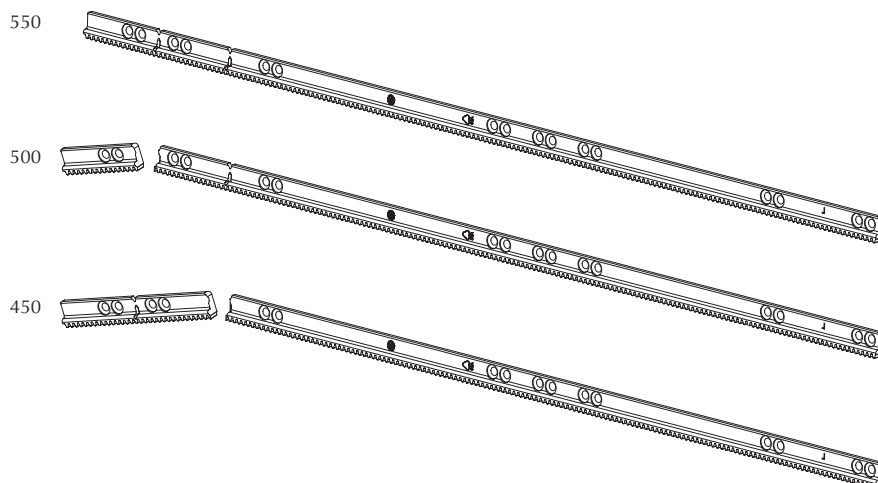
Stabilizer application



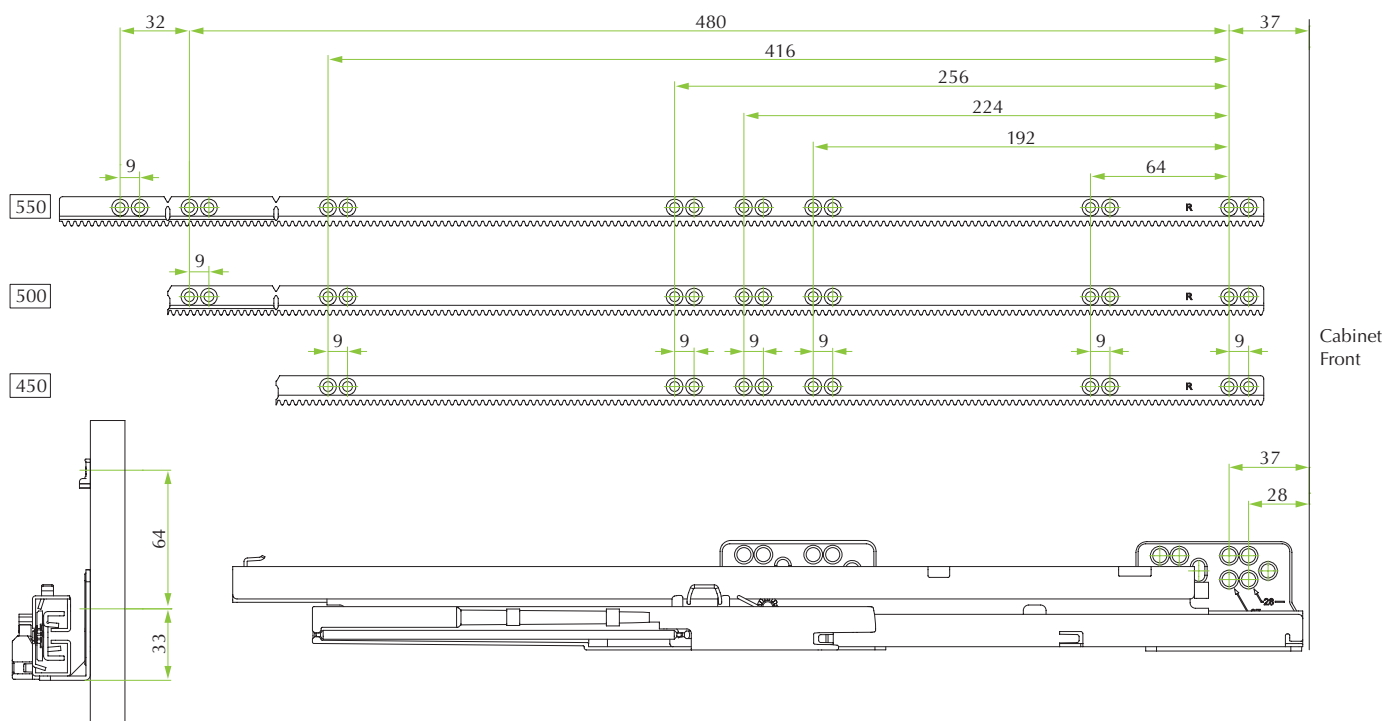
Stabilizer connecting bar



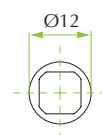
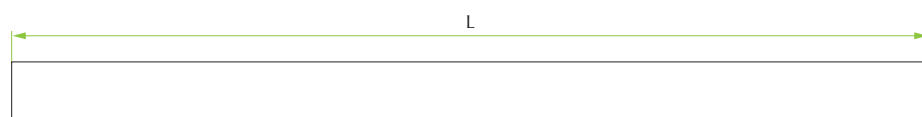
## Fixing dimensions & positions



## RIGHT SIDE



## Stabilizer connecting bar

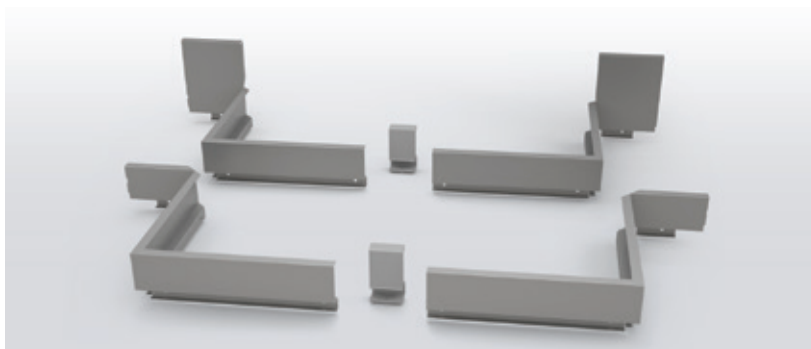
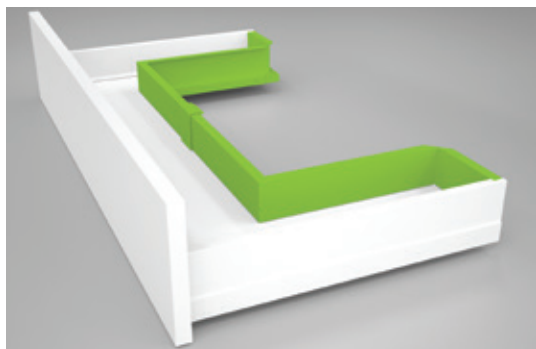


Drawer width	L
600	515
800	715
900	815
1000	915
1200	1115

Values given in mm



# Acquario undersink solution



## Acquario undersink drawer solution for perfect space management around the siphon

### Benefits for the industry

- Kit made by two steel foldable back panels with a central connector
- Available in H90 and H180 mm drawer height
- Application from 450 to 550 mm deep drawers
- Efficient space management under the sink and around the siphon
- Easy to assemble and to adapt to the available space
- Four metal finishes: Coffee Black, Storm Grey, standard Grey and Polar White

### Benefits for the consumer

- Efficient space management under the sink and around the siphon
- Four metal finishes: Coffee Black, Storm Grey, standard Grey and Polar White

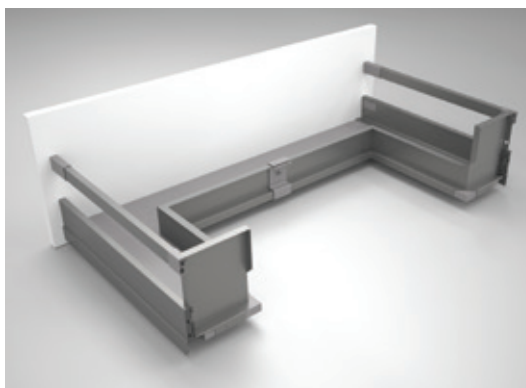
Code	Description	Packing
58.PYLA.**.^^.U0000	Set Acquario undersink for H90 drawer	10 sets
58.PYLS.**.^^.U0000	Set Acquario undersink for H180 drawer	10 sets

**\*\* colour codes:** N2 = Coffee Black / S8 = Storm Grey / A6 = standard Grey / F1 = Polar White.

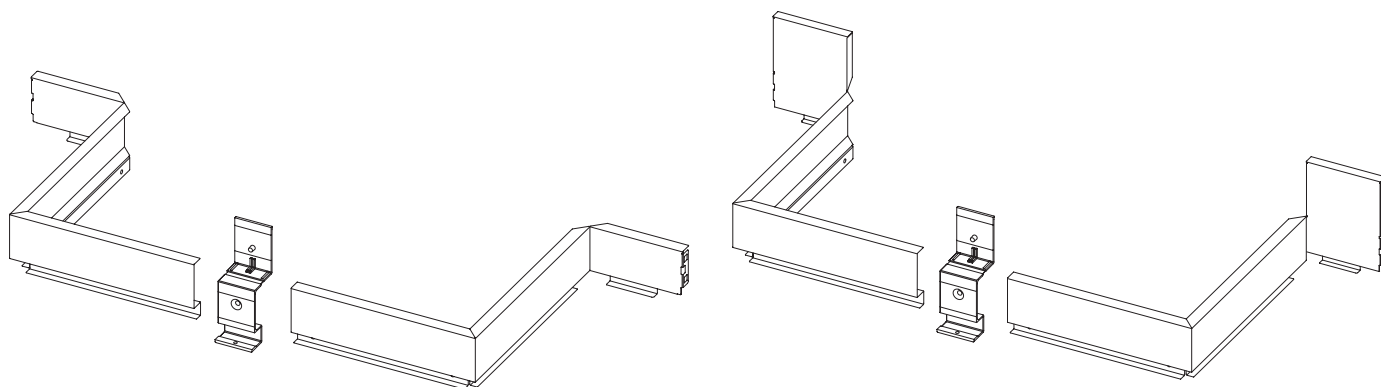
**^^ drawer width:** 60/80/90/10/12 (example 60 stands for 600mm drawer width).

**Packing in set composed by:**

- 1 metal back panel right side
- 1 metal back panel left side
- 1 plastic central connector
- 1 screw (Ø4x11 mm) for central connector fixing.

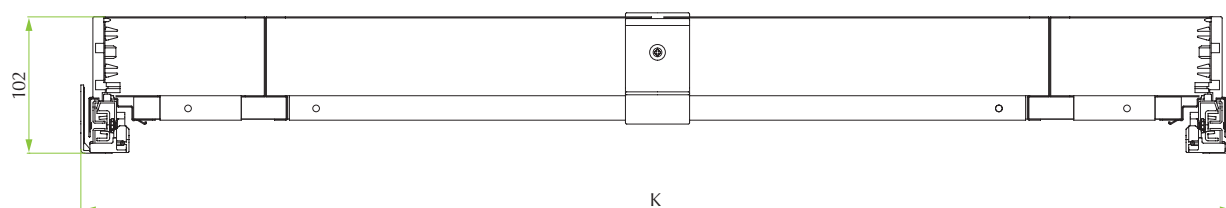


Acquario application with rectangular railing

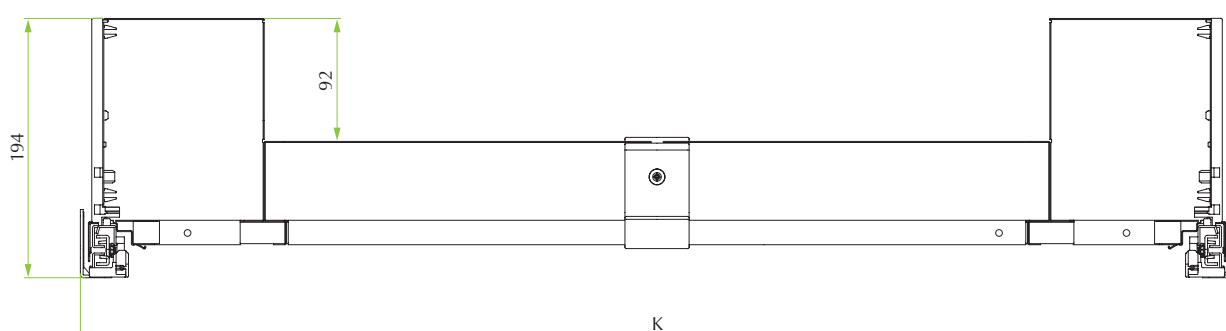


## Applications

Drawer H90



Drawer H180

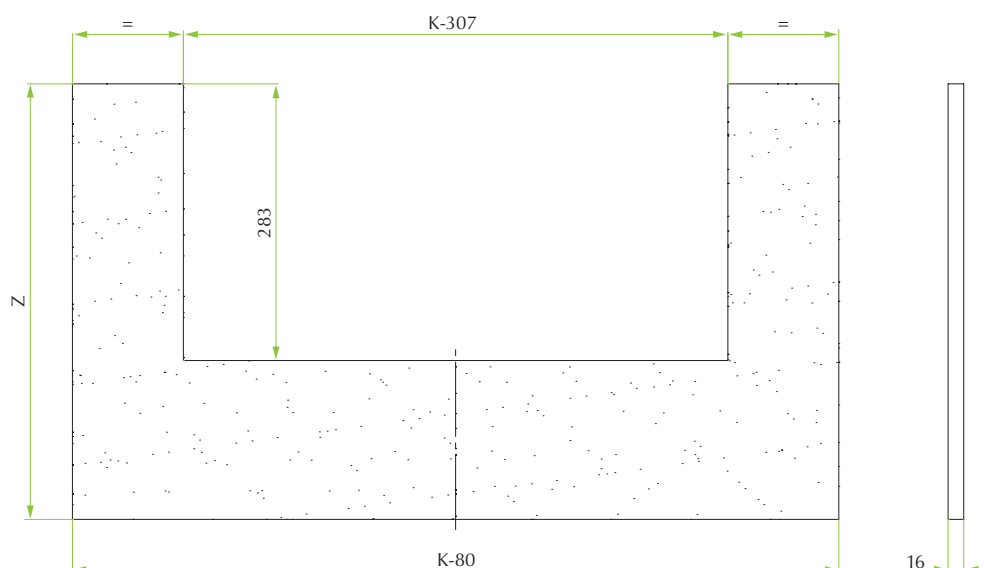


**K** = INTERNAL CABINET WIDTH

## Bottom panel dimensions

**X** = BOTTOM PANEL WIDTH  
**Z** = BOTTOM PANEL LENGTH

Drawer depth	Z
450	445.5
500	495.5
550	545.5



Values given in mm



# Standard drawer Kit



## Ten<sup>2</sup> standard individual kit for ease of distribution and ease of use

### Benefits for the industry

- Each kit contains all elements necessary for the realisation of a drawer with exception of the wooden back and bottom panels
- No handling of individual components necessary
- A few kits cover the necessity of almost usual applications
- Standard drawer kits available
- Easy to sell over the counter

### Benefits for the consumer

- All components necessary immediately at hand
- No necessity to stock individual components in large volumes and remain with unpaired components
- Ease of transport on site of the packed products and hassle free assembly on site

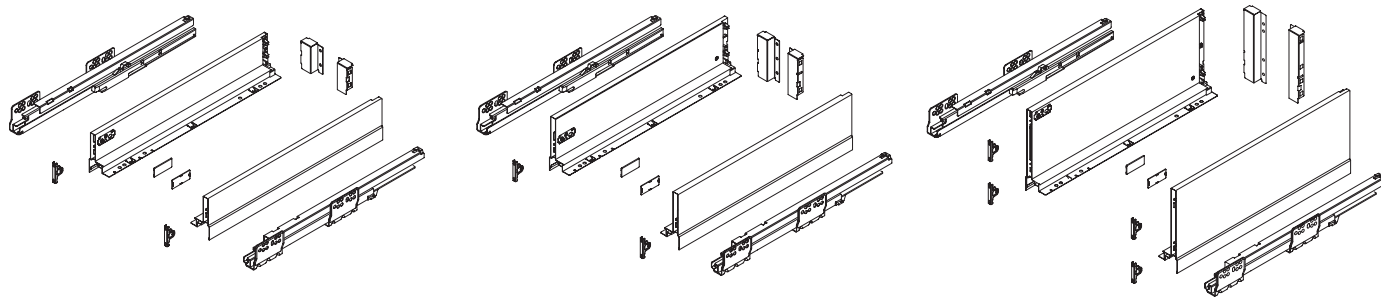
Code	Description	Packing
58.YEAK.**.27.XA000	Ten <sup>2</sup> H90 standard drawer kit 270	1 kit
58.YEAK.**.30.XA000	Ten <sup>2</sup> H90 standard drawer kit 300	1 kit
58.YEAK.**.35.XA000	Ten <sup>2</sup> H90 standard drawer kit 350	1 kit
58.YEAK.**.40.XA000	Ten <sup>2</sup> H90 standard drawer kit 400	1 kit
58.YEAK.**.45.XA000	Ten <sup>2</sup> H90 standard drawer kit 450	1 kit
58.YEAK.**.50.XA000	Ten <sup>2</sup> H90 standard drawer kit 500	1 kit
58.YEAK.**.55.XA000	Ten <sup>2</sup> H90 standard drawer kit 550	1 kit
58.YEBK.**.27.XA000	Ten <sup>2</sup> H122 standard drawer kit 270	1 kit
58.YEBK.**.30.XA000	Ten <sup>2</sup> H122 standard drawer kit 300	1 kit
58.YEBK.**.35.XA000	Ten <sup>2</sup> H122 standard drawer kit 350	1 kit
58.YEBK.**.40.XA000	Ten <sup>2</sup> H122 standard drawer kit 400	1 kit
58.YEBK.**.45.XA000	Ten <sup>2</sup> H122 standard drawer kit 450	1 kit
58.YEBK.**.50.XA000	Ten <sup>2</sup> H122 standard drawer kit 500	1 kit
58.YEBK.**.55.XA000	Ten <sup>2</sup> H122 standard drawer kit 550	1 kit
58.YESK.**.27.XA000	Ten <sup>2</sup> H180 standard drawer kit 270	1 kit
58.YESK.**.30.XA000	Ten <sup>2</sup> H180 standard drawer kit 300	1 kit
58.YESK.**.35.XA000	Ten <sup>2</sup> H180 standard drawer kit 350	1 kit
58.YESK.**.40.XA000	Ten <sup>2</sup> H180 standard drawer kit 400	1 kit
58.YESK.**.45.XA000	Ten <sup>2</sup> H180 standard drawer kit 450	1 kit
58.YESK.**.50.XA000	Ten <sup>2</sup> H180 standard drawer kit 500	1 kit
58.YESK.**.55.XA000	Ten <sup>2</sup> H180 standard drawer kit 550	1 kit

\* colour codes: N2 = Coffee Black / S8 = Storm Grey / A6 = standard Grey / F1 = Polar White.

Kit consisting of the following components for a given drawer dimension:

- an assembly instruction
- a pair of left and right drawer sides
- a pair of left and right drawer slides
- a pair of cover caps with FGV logo
- a pair of screw-on front brackets
- a pair of back fixing brackets

All individual parts and further components of the system available separately. See the complete catalogue and the assembly instructions.



Standard kit

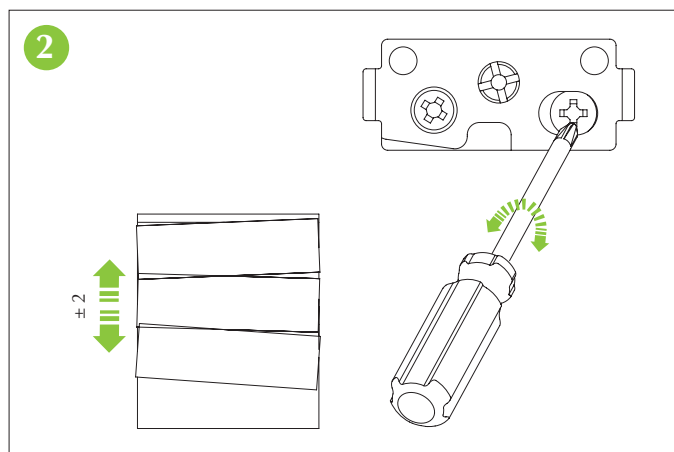
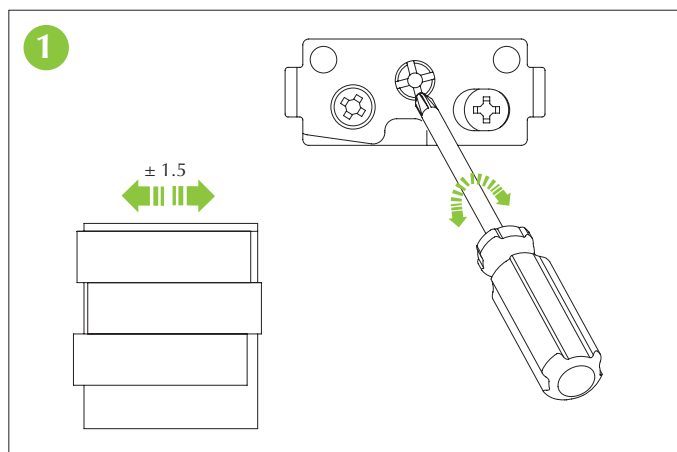
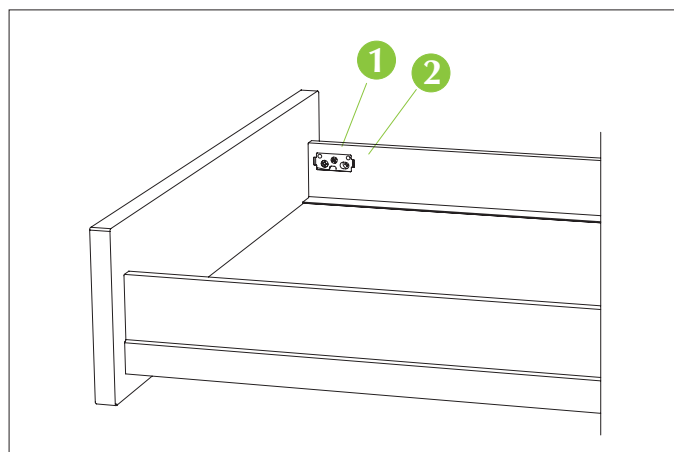
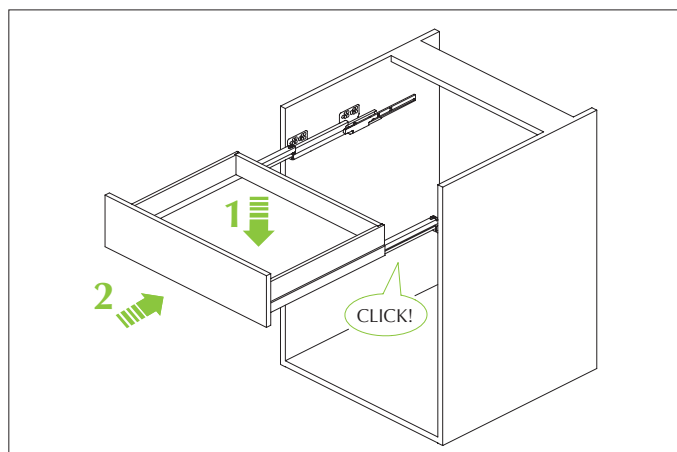
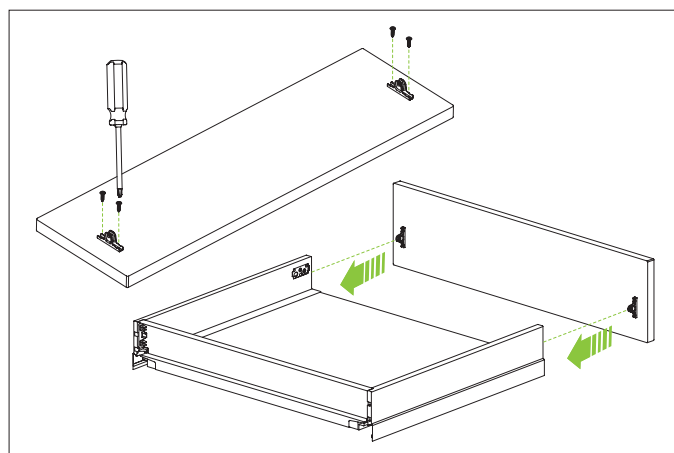
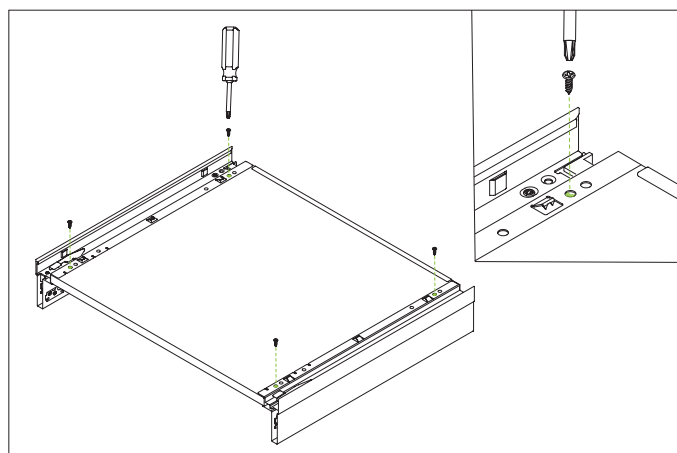
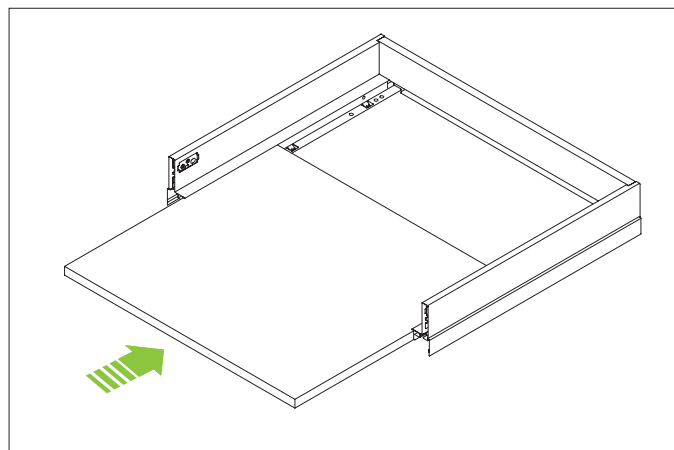
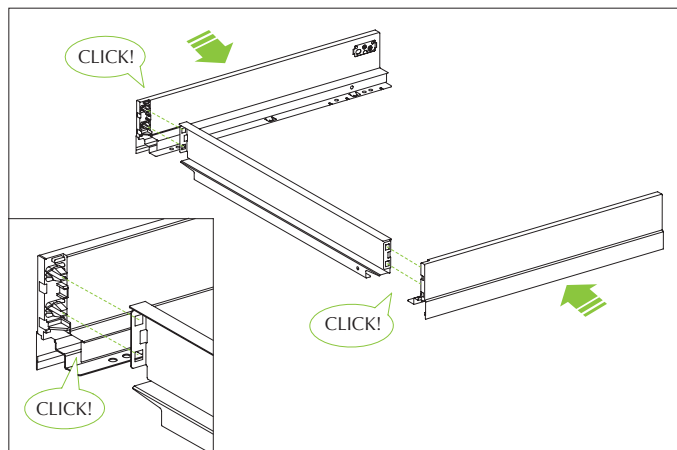




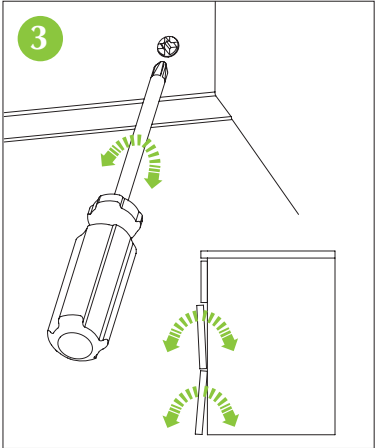
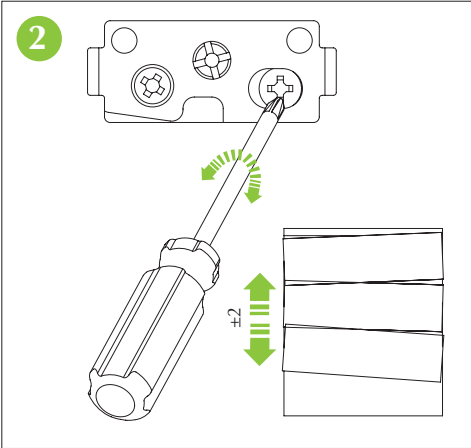
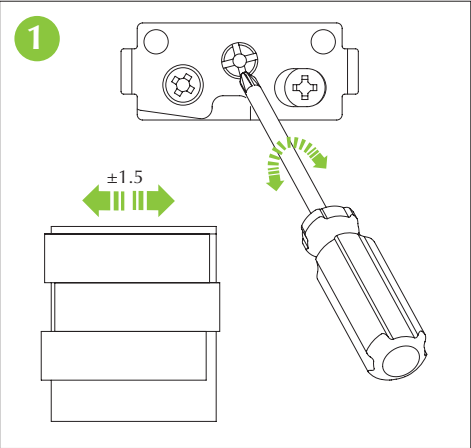
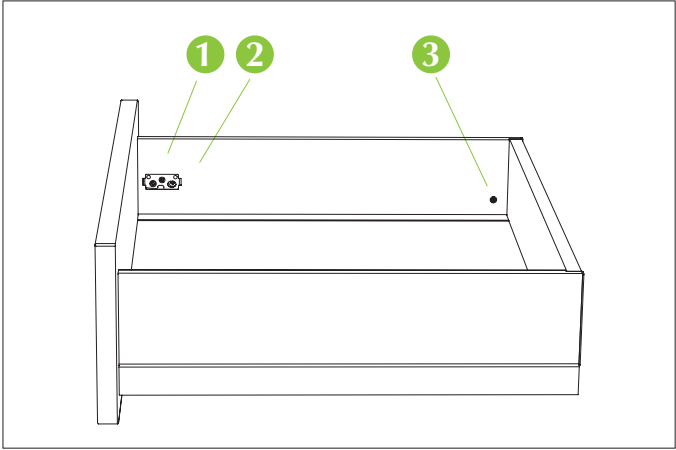
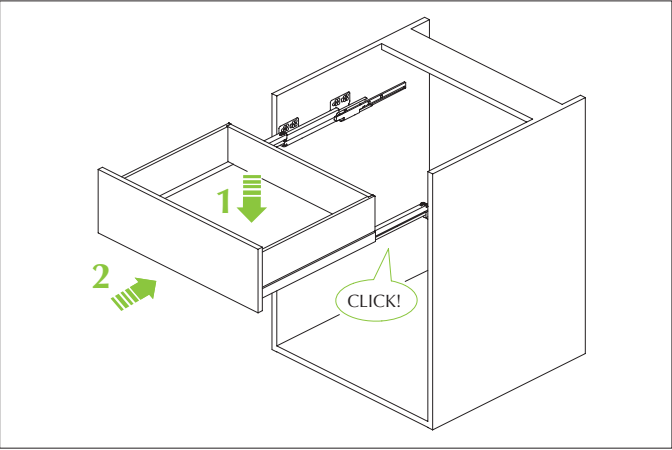
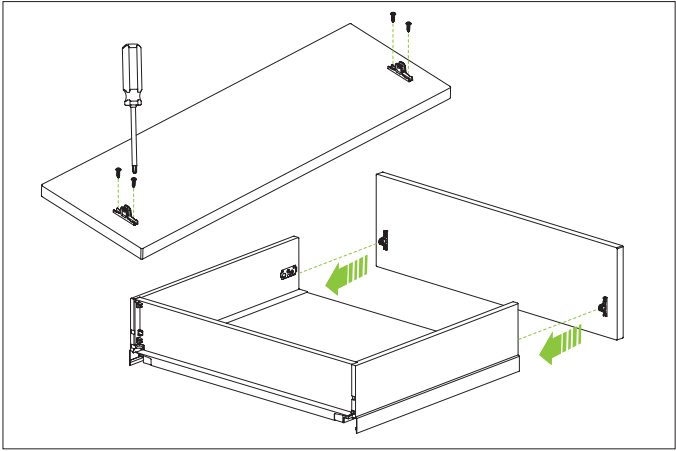
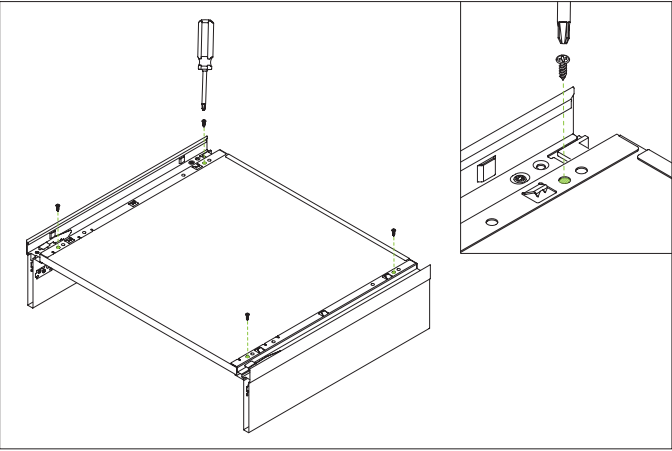
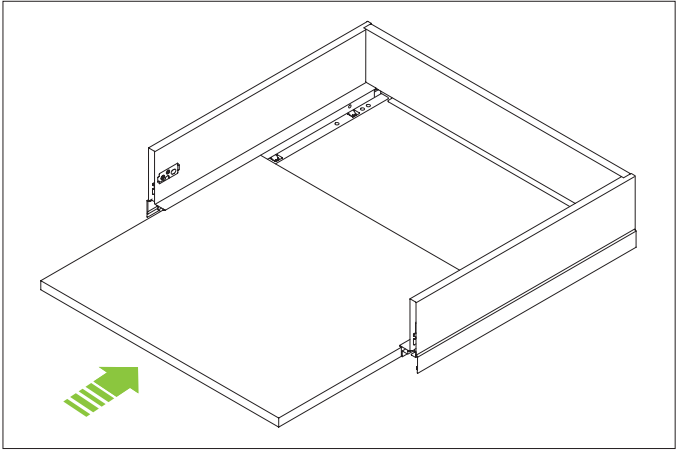
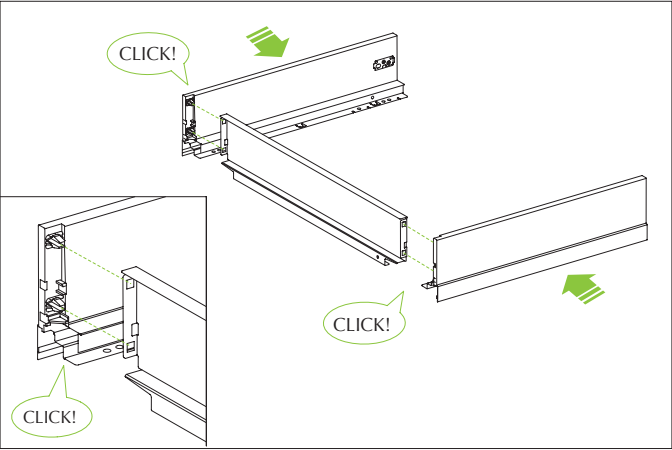


# Instructions for use

## Drawer H90 assembly sequence



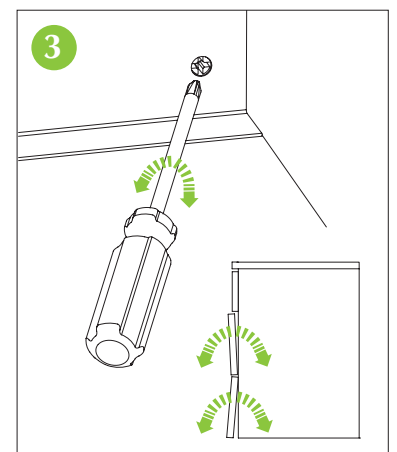
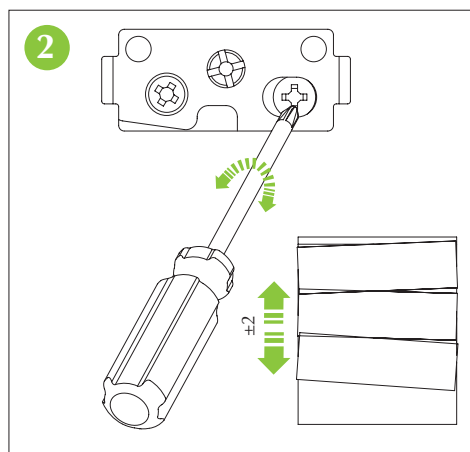
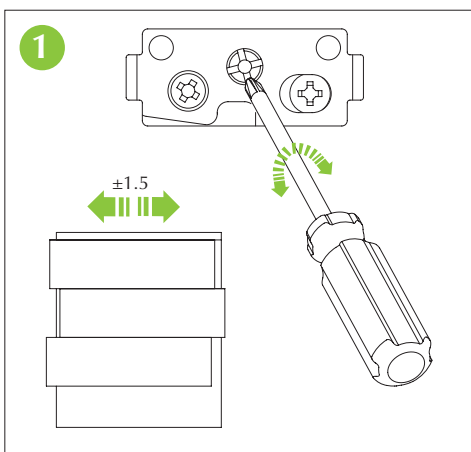
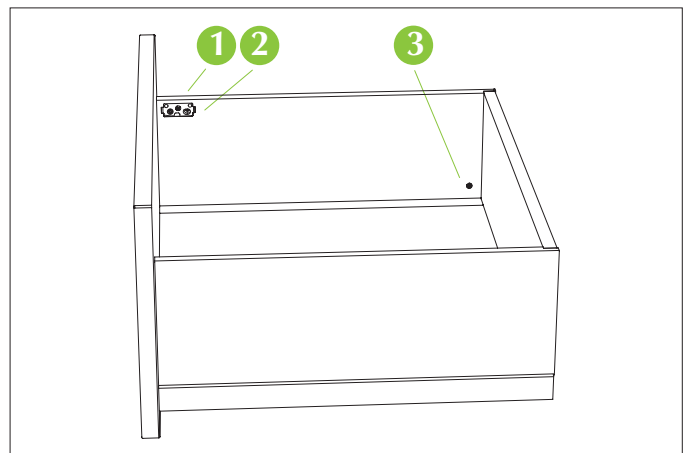
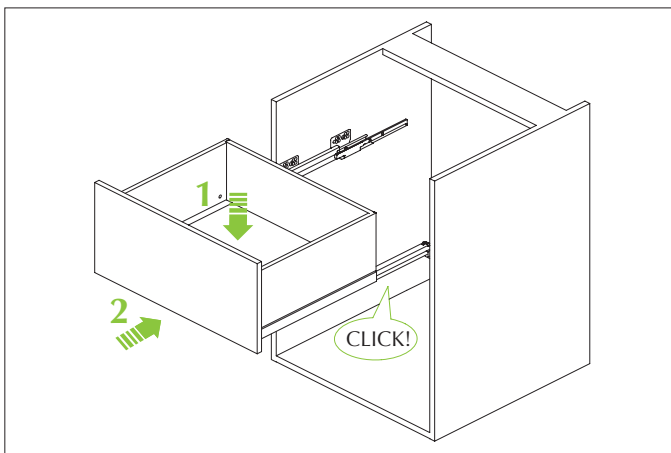
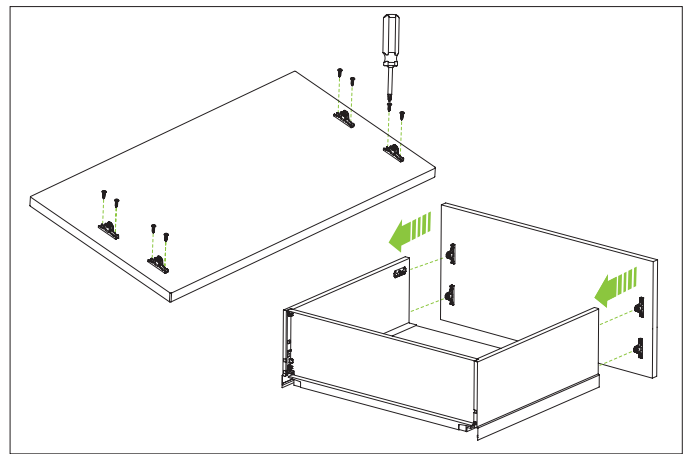
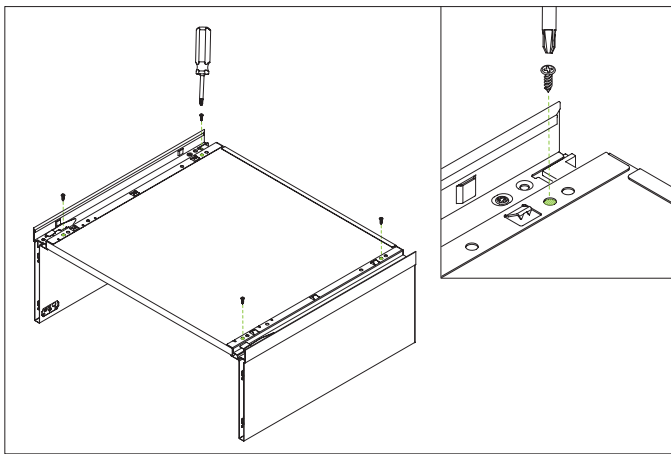
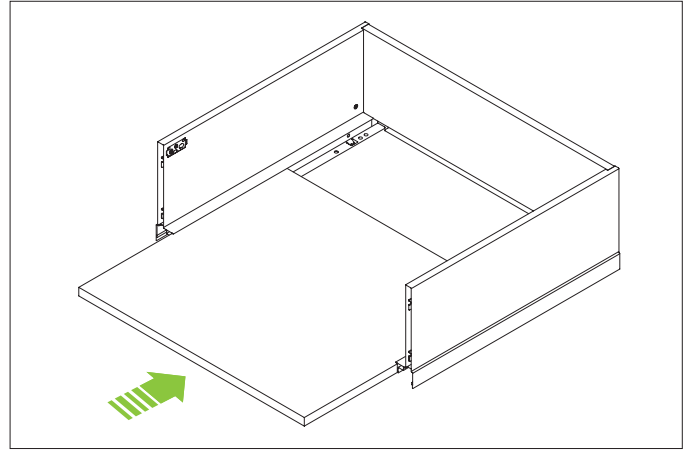
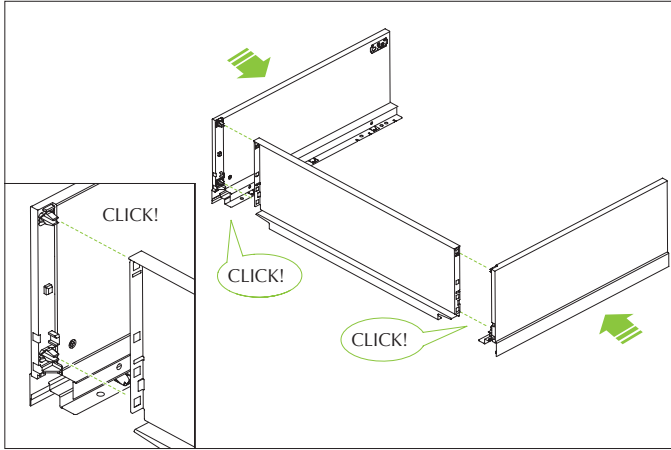
Drawer H120 assembly sequence



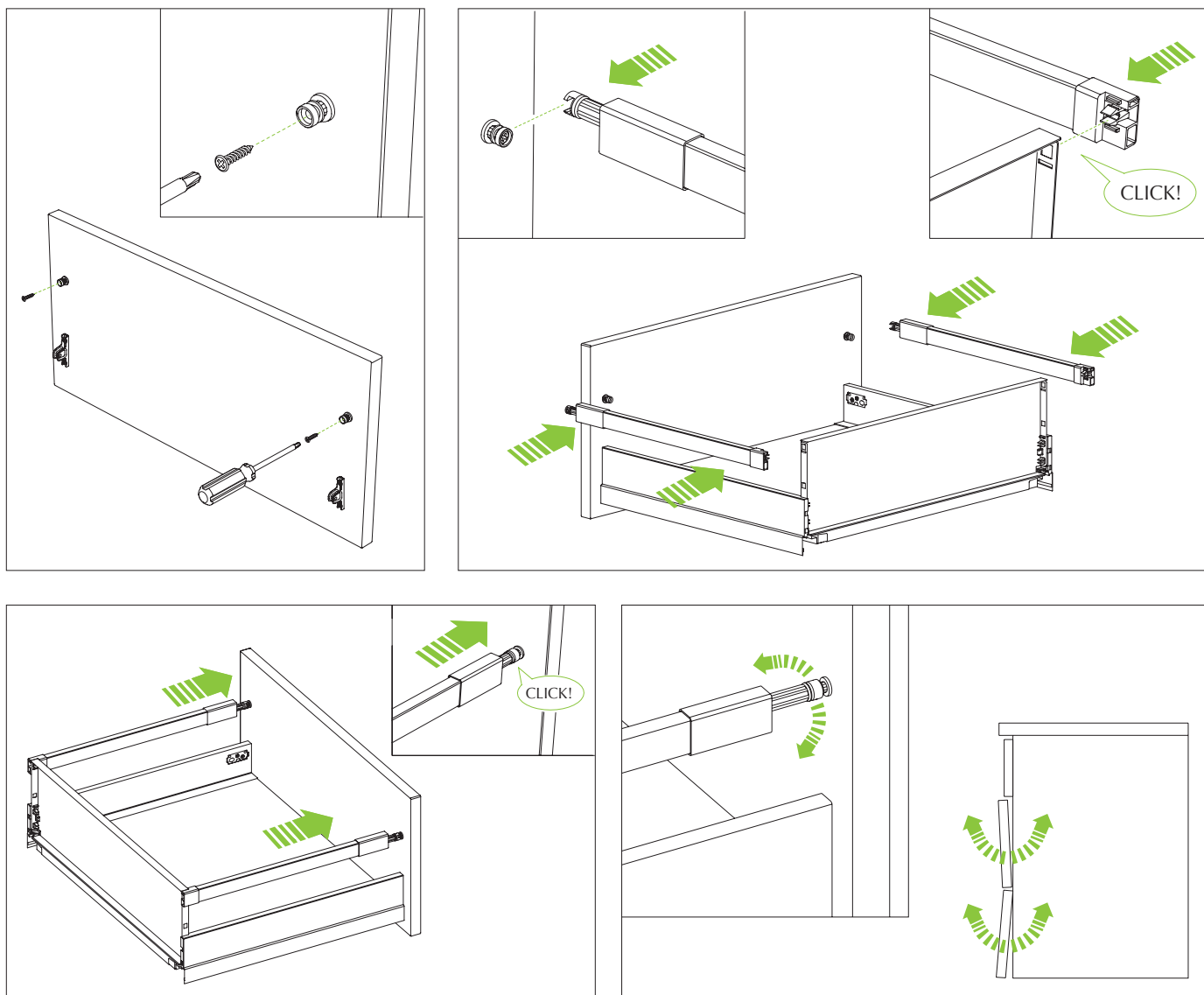


# Instructions for use

## Drawer H180 assembly sequence



## Rectangular railing assembly sequence

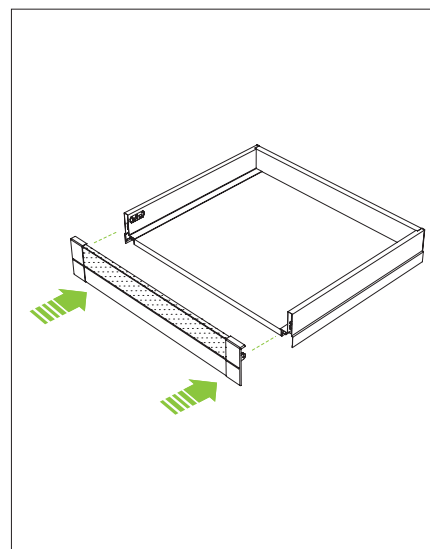
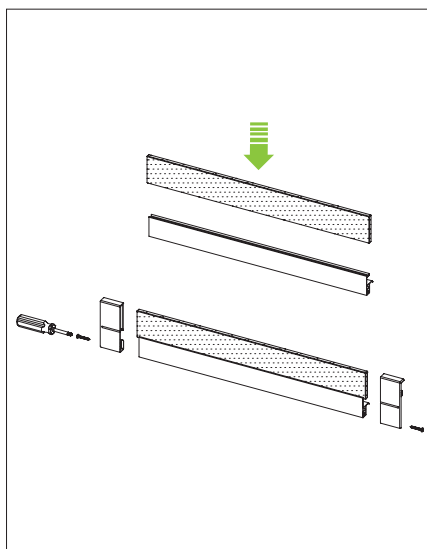
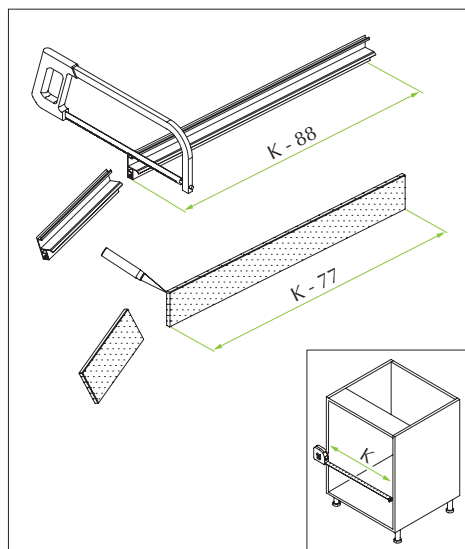




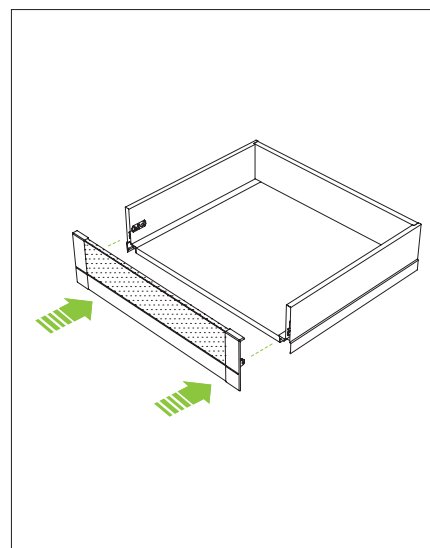
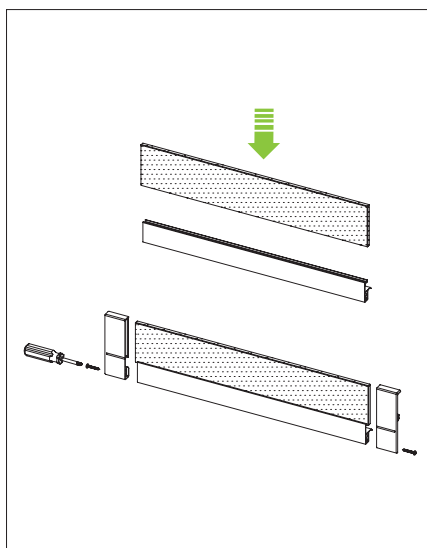
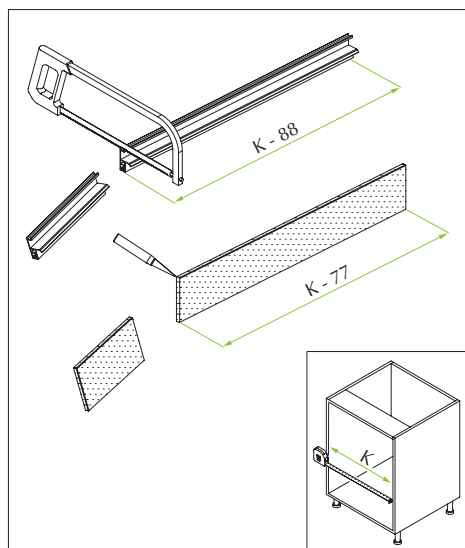
# Instructions for use

## IN internal drawer assembly sequence – Crystal profile

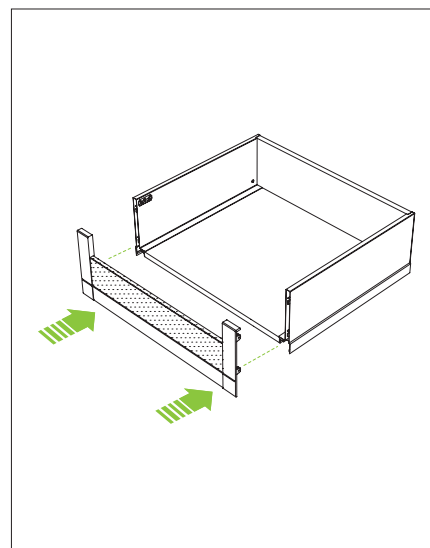
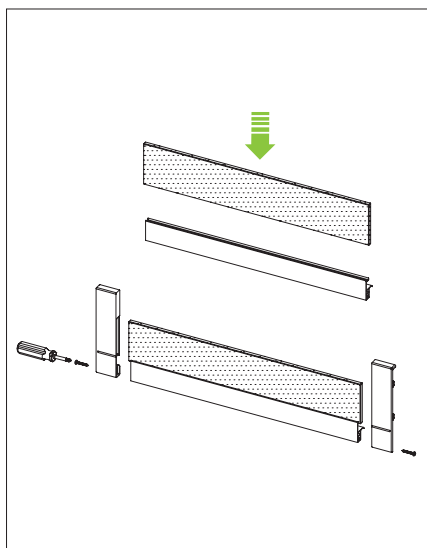
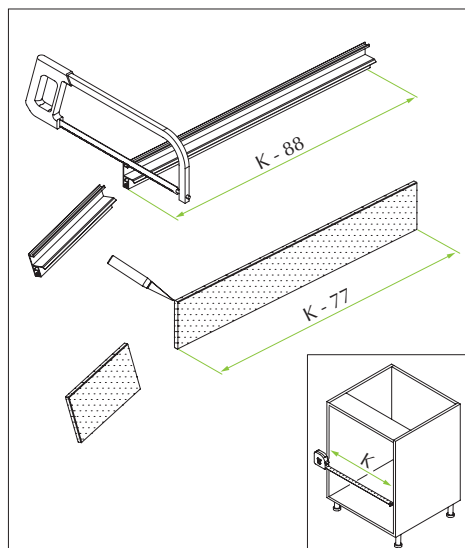
### Drawer H90



### Drawer H120



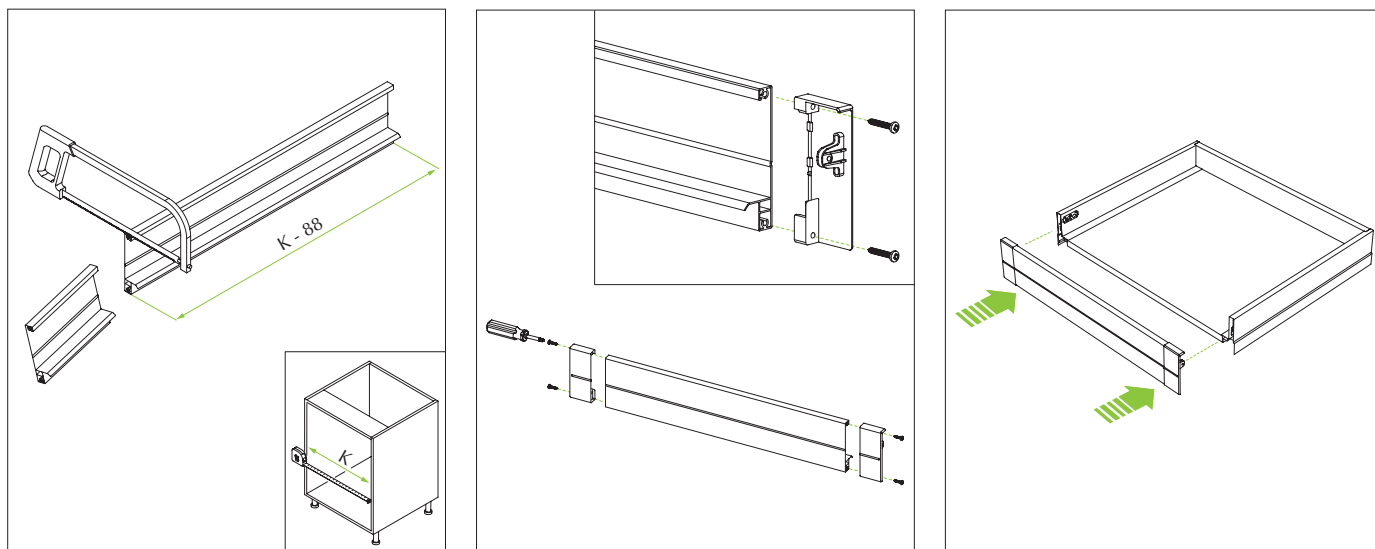
### Drawer H180



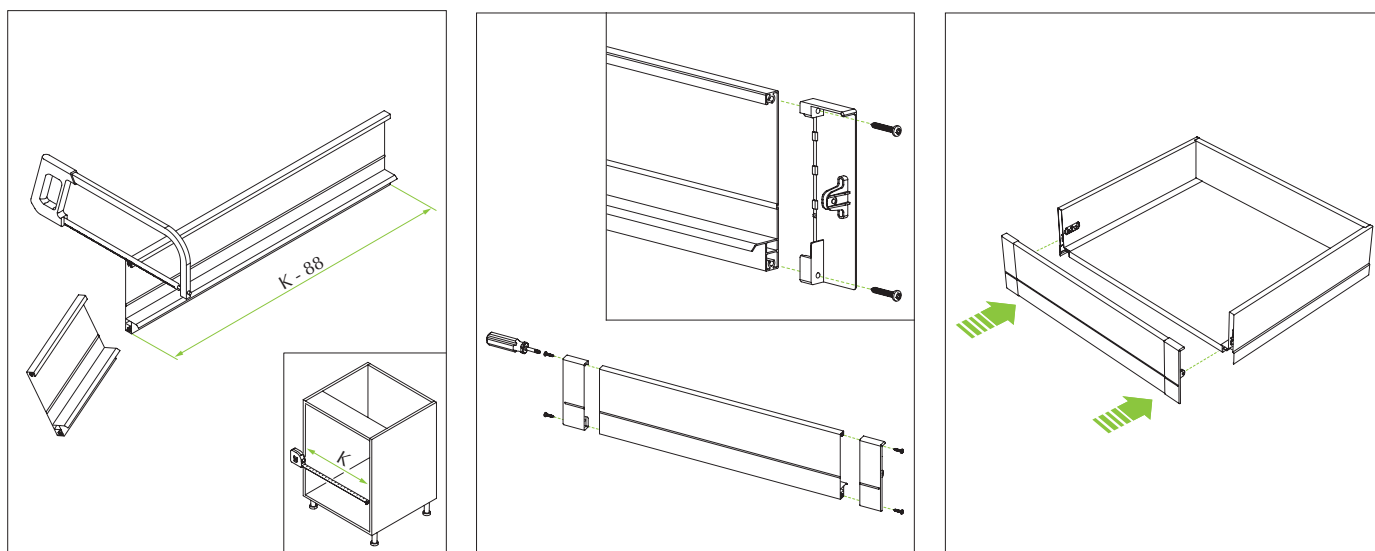


## IN internal drawer assembly sequence - Aluminium profile

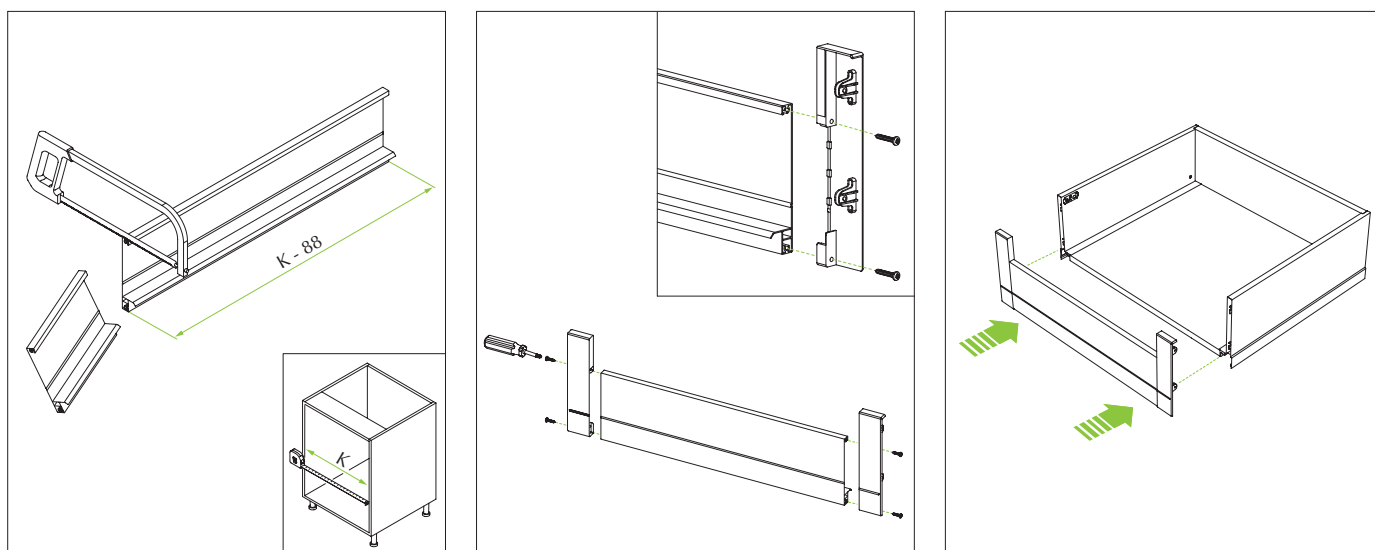
### Drawer H90



### Drawer H120



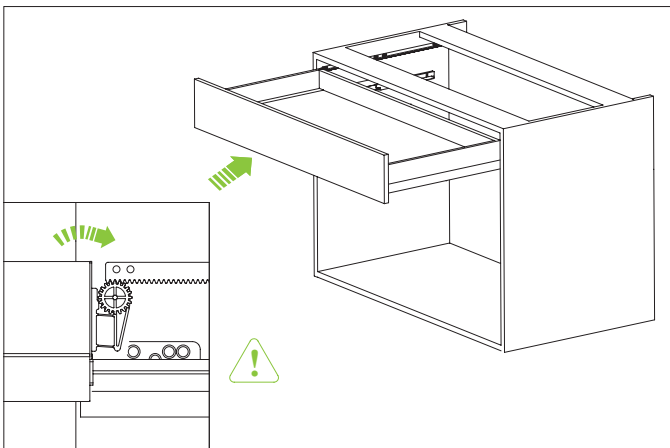
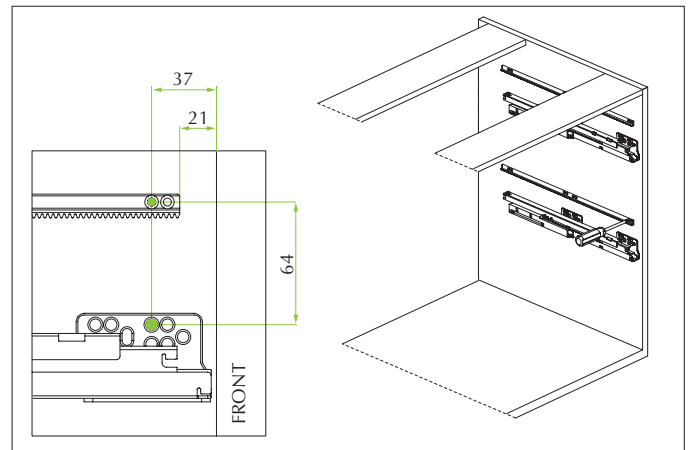
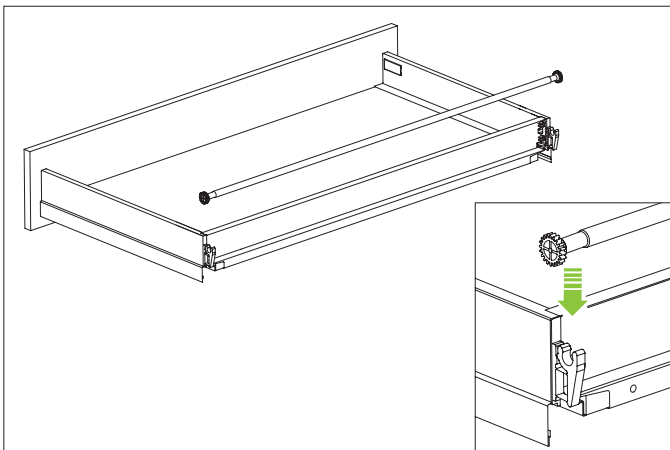
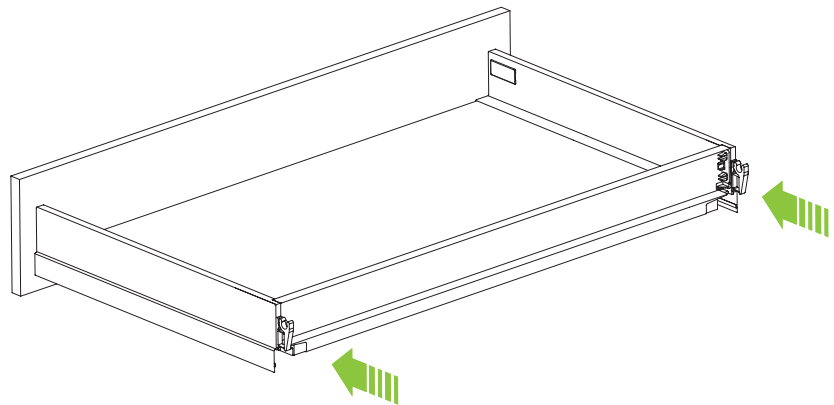
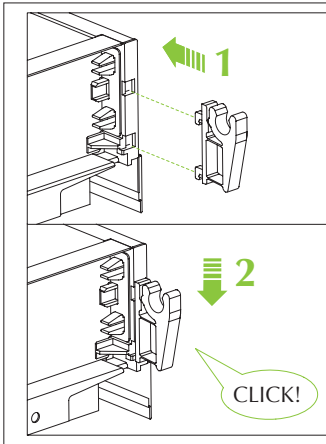
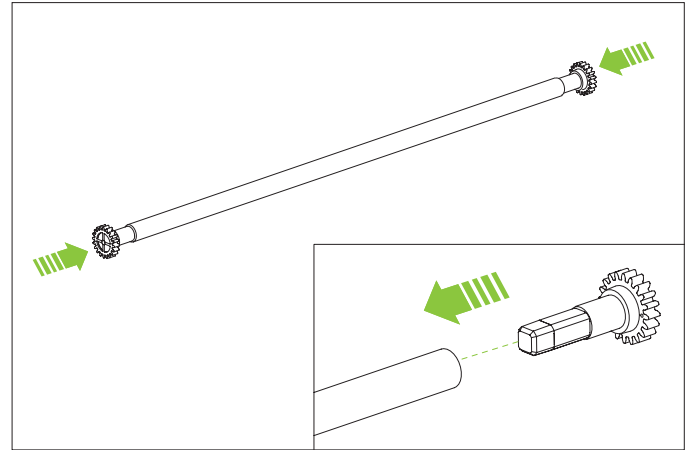
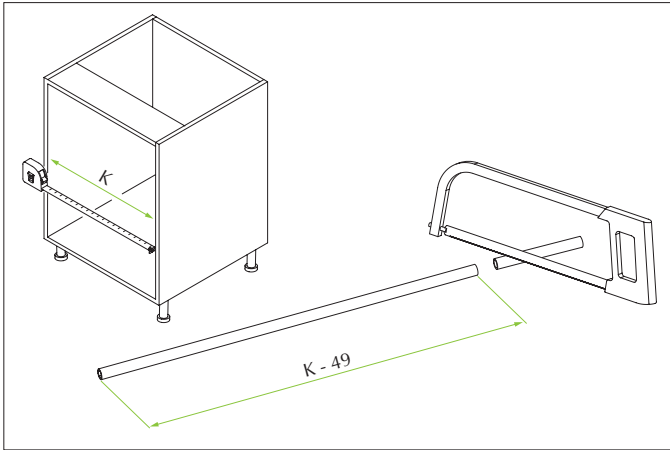
### Drawer H180

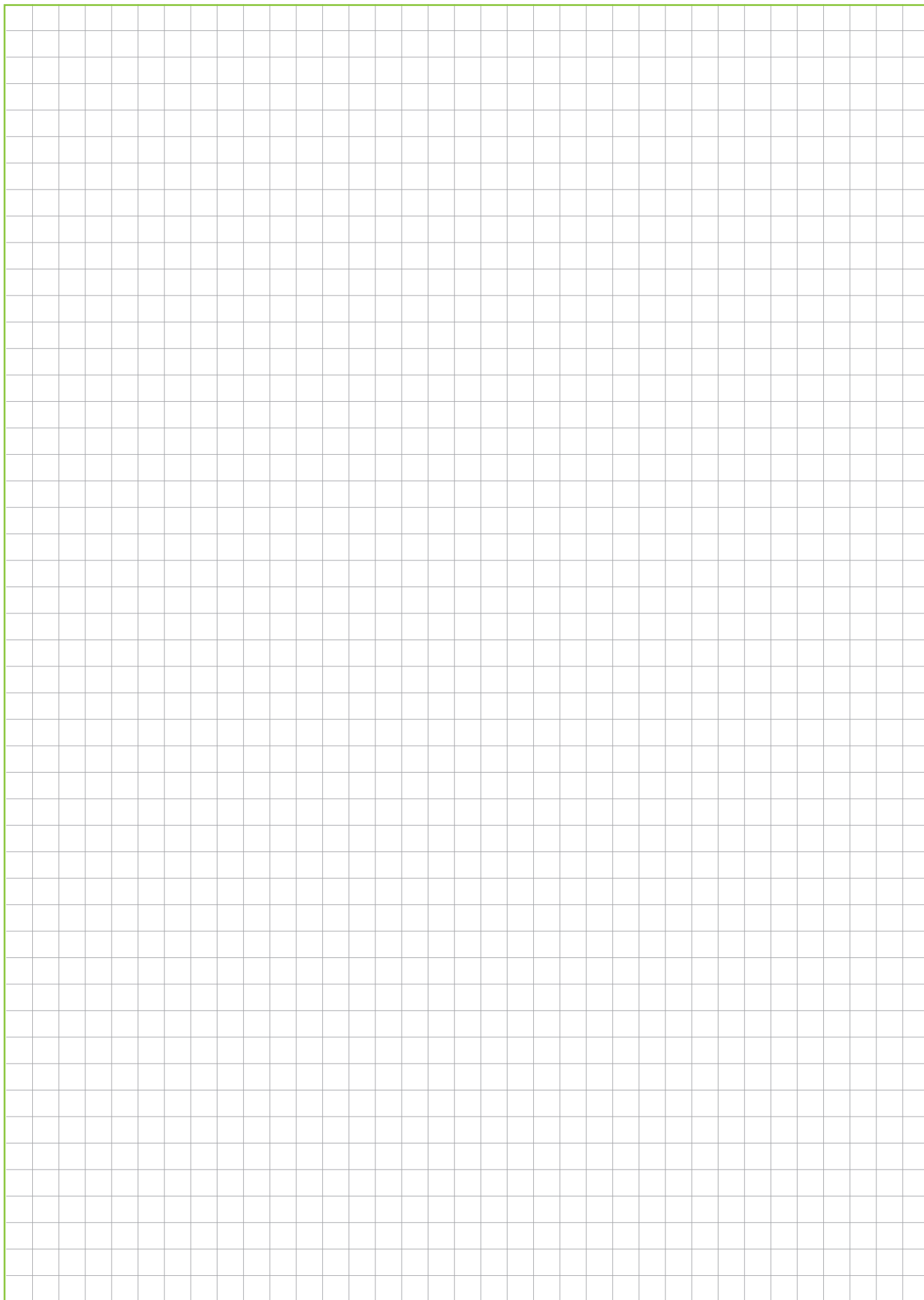




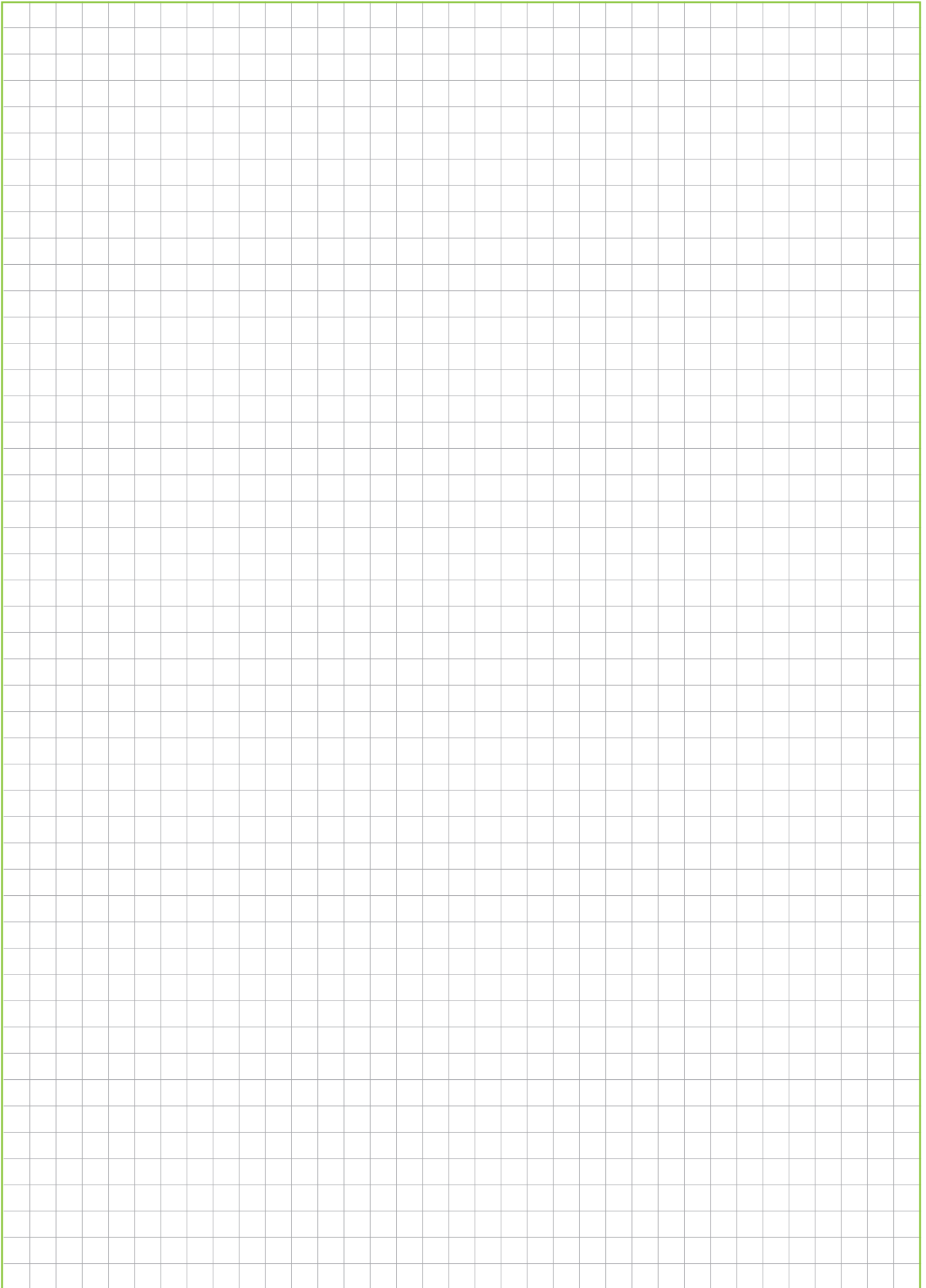
# Instructions for use

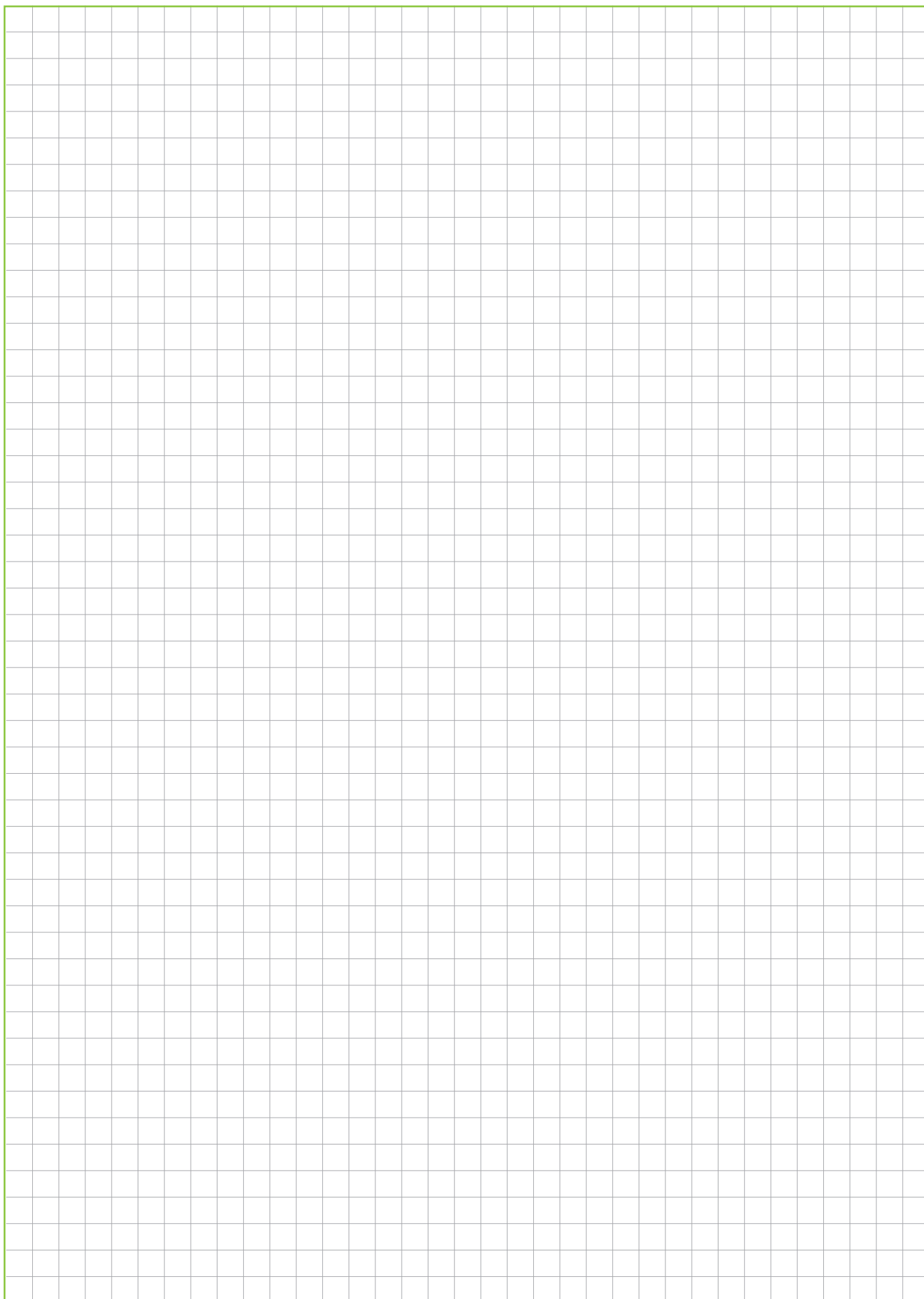
## Stabilizer Kit assembly sequence





# Notes







**FORMENTI & GIOVENZANA S.p.A.**

Via Concordia, 16  
20837 Veduggio con Colzano (MB) - ITALY  
Tel. +39 0362 947.1 r.a. - Fax +39 0362 998788  
info@fgv.it  
www.fgv.it

**FGV AMERICA**

California / Los Angeles Headquarters  
West Coast Warehouse – River Plate  
Canoga Park, CA 91304  
Tel. +1 714.257.5317  
info@fgvamerica.com - www.fgvamerica.com

**FGVTN BRASIL LTDA.**

Rua Francisco Derosso, 1352  
Curitiba Paraná 81710 000 - BRASIL  
Tel. +55 41 2107 4411 - Fax +55 41 3275 3038  
fgvtn@fgvtn.com.br - www.fgvtn.com.br

**FGV ASIA Limited**

Unit 1602, 16/F., Metropolis Tower  
10 Metropolis Drive, Hunghom,  
Kowloon, Hong Kong - P.R.CHINA  
Tel. +852 2762 1534 - Fax +852 2648 7389  
info@fgvasia.com - www.fgvasia.com

**FGV (Guangzhou) Company Limited**

Units 2710-2711, Yang Cheng International Trading Centre  
East Tower, Ti Yu Dong Lu, No. 122  
Guangzhou - P R CHINA  
Tel. +86 20 38870570 - Fax +86 20 38870323  
info@fgvchina.com - www.fgvchina.com

**DEUTSCHE FGV Formenti & Giovenzana Möbelbeschläge GmbH**

Industriestr. 44  
D-33397 Rietberg - GERMANY  
Tel. +49 (0) 5244-9708-0 - Fax +49 (0) 5244-9708-15  
www.fgvgermany.com

**FORMENTI & GIOVENZANA POLSKA Sp. z o.o.**

Ul. Boleslawiecka 8a  
98-400 Wieruszów - POLAND  
Tel. +48 62 58 10 400 - Fax +48 62 58 10 480  
www.fgvpolska.pl

**FGV UKRAINE TOB**

Вул. Черновола 39  
08132 Вишневе, Київська обл., Україна  
Тел. +38 044 333 56 23  
Факс +38 044 333 56 24  
info@fgv.kiev.ua

**FGV SERVICE VENETO S.r.l.**

Via Pietro Bassani, 12  
33170 Pordenone (PN) – ITALY  
Tel. +39 0434 572728  
info@fgvserviceveneto.com

**FGV SERVICE CENTRO-SUD**

Via Massimo d'Antona, 6i  
60033 Chiaravalle (AN) - ITALY  
Tel. +39 071 7451125 - Fax +39 071 7496441  
infocentrosud@fgvservice.com