



Industrial remote control

**EASY TO CONTROL**

**TELEcontrol**<sup>TM</sup>  
Professional solution  
for industrial remote control



English version

**TELEcontrol**<sup>TM</sup> (Authorizer)  
**UTING ELECTRONICS GROUP CO.,LTD**  
Tel: +86-574-8715 0639 8715 0539  
Web: www.e-telecontrol.com

**UTING**<sup>®</sup> 禹鼎·宁波 (Manufacturer and marketing)  
**NINGBO UTING ELECTRONIC CO., LTD (NINGBO, CHINA)**  
Tel: +86-574-8716 4091 8716 4092 Fax: +86-574-8715 0953  
Web: www.uting3e.com www.uting-china.com  
E-mail: sales@uting-china.com sales@e-telecontrol.com  
sales02@e-telecontrol.com sales03@e-telecontrol.com

The first printing of the first edition (V. EN 2013.1.0)  
The company has the final right for the instruction of explanation and amendment

Adopt ecotypic paper to print

**EASY TO CONTROL**



# [Simple question]

Why is the TELEcontrol remote

- The present device can also be used...
- Product is great but it would be a little expensive...
- Compared with other company's products, what the advantages are...
- Our present operation may be improper...
- Send an inquiry to try it...
- If we choose it, we will do well...
- .....

control easy to use?



We meet the need of  
**SAFETY DURABILITY**  
**ENVIRONMENT** Protection etc

The best cost performance  
**TELEcontrol F SERIES** industrial remote control

## ABOUT TELEcontrol

### Safe and reliable wireless remote control

We develop, manufacture and sell industrial radio control system. With long-term accumulated experience, it is believed that most industrial equipment can be operated by the wireless remote controls.

Along with the development of society and economy, modern industry requires perfect balance between human and technology. Therefore, selection of appropriate control devices is of key importance. The wireless remote control system is the wise choice to ergonomics and environment.

### Focus on improving the efficiency and flexibility

Industrial remote control system is more and more widely applied in various industrial fields and brings much positive influence. With industrial remote control systems, industrial workers handheld portable transmitters, walk freely and choose the best position to operate it. This improves the working environment and safety, reduces accidents, such as injury and saves manpower during operation. With remote controls, the operator can finish the various works independently that improve the working efficiency.

### Wireless remote control can be applied in most fields

We can boldly announce that wireless remote control can be used in most areas. At present, TELEcontrol wireless remote control system, mainly used in four areas, vehicles equipment, industrial control, lifting machinery and door control system. Such as crane, engineering machinery, lifting platform, traveling crane, hydraulic equipment, automobile tail board, emergency workers van, conveyor belts, industrial door and robot, etc.

### Comprehensive remote control solutions

One of the main purposes is to make the customer to be satisfied with TELEcontrol brand and products. If our standard products cannot meet your needs, we can launch the project cooperation with you, go all out to handle the related issues and put forward reasonable solutions to realize your requirements. We have all kinds of special solutions. With customized transmitter panels and software modification, we try our best to produce the most suitable remote control system for you.

The delivery time is from twenty-four hours to two weeks based on the types and quantity etc. The warranty period is one year.

The service department is with professional senior technicians who can offer best service to you.

### Many years of professional experience, accumulation of knowledge, innovation course

Face of the broad market and with a solid professional competence, TELEcontrol is the leadership of innovation and technology and it is committed to break through the limits to become one of the leaders of radio remote controls. With market-oriented and demand-oriented, we develop products and focus on the close cooperation between remote control solutions and customer needs. Therefore, we are very confident to meet the various requirements on the industrial wireless remote control.

### Vision

In wireless remote control and wireless applications, TELEcontrol become a prestigious, international and high-speed growth enterprise and be respected by all.

### Business Concepts

To make man-machine communication become effective, convenient and safe. To exceed customers' demands of equipment control and communication. To realize our operation principle through the continuous development, manufacturing, sales of good wireless remote control and communication system.

### Global Multinational Corporation

In the international market, the products have obtained a high praise and widely been used in various fields.

At present, Our business have spread all over the world. The headquarters is located in the Victoria, Seychelles. The global manufacturing center is located in Ningbo, China. There are subsidiaries in Netherlands, Germany, Norway, Britain, the United States, Estonia, Turkey and Sweden. Our dealers are throughout Australia, France, Spain and Denmark, etc.

## 3E Module

We put forward the concept of the module.

Develop and evolve further and provide project with demands of the time.

Easy

Economy

Expansive

Evolution

- Promote the product research and manufacturing
- Improve marketing and service quality
- Enhance customer satisfaction
- Grow with customers



3E EVOLUTION





**TELEcontrol**

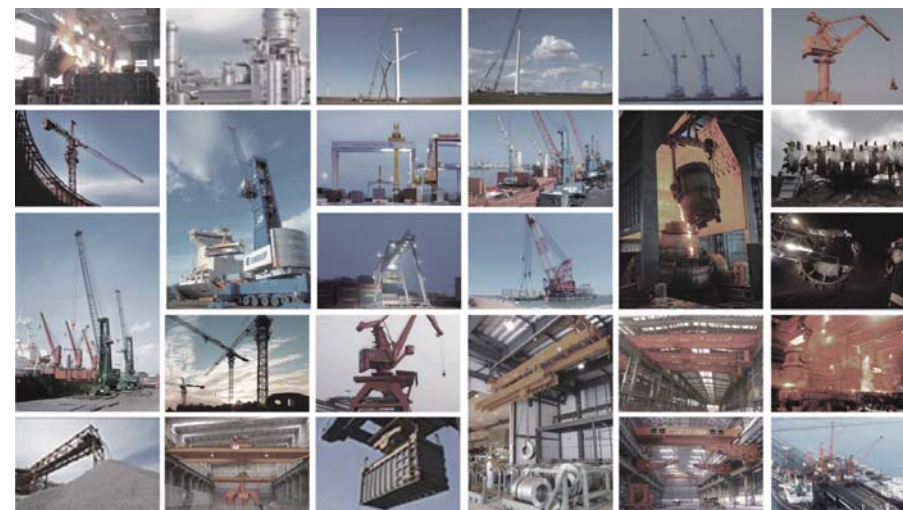
**Application**



# CONTENTS

**Professional solution  
for industrial remote control**

- 01 F21-2S/D
- 03 F21-4S/D
- 05 F21-E1/E2/E1B
- 07 F23-A++/BB
- 09 F24-6S/D、8S/D、10S/D、12S/D
- 11 F24-D
- 13 F24-60
- 17 F26-A1/A2/A3、B1/B2/B3、C1/C2/C3
- 19 EF24-6S/D、8S/D、10S/D、12S/D
- 21 EF24-60
- 23 Solutions
- 24 Accessories



# F21-2S/2D TRANSMITTER

Small, economical, convenient



MODEL: F21-2S-TX  
ITEM CODE: 921-002-001  
Dimension: 132 x 45 x 28mm  
Weight: 98g(without batteries)

MODEL: F21-2D-TX  
ITEM CODE: 921-002-002  
Dimension: 132 x 45 x 28mm  
Weight: 98g(without batteries)



F21-2S

F21-2D

## Product Features

- Two single/double speed buttons, one "STOP"
- 6 control contactors
- With battery voltage warning device, the power supply is cut off during low power
- Safety key switch is to prevent from unauthorized user
- Program the button function by computer interface
- Up/down can be programmed to interlock or non-interlock
- The spare button can be programmed to start, toggle or normal, etc

## Transmitter Parameters: F21-TX

Material	Glass-Fiber PA
Enclosure protection class	IP65
Frequency range	VHF: 310~331MHz; UHF: 425~446MHz
Transmitter power	≤10dBm
Transmitter power supply	2 AA batteries
Safety code	32 bits (4.3 billion)
Temperature range	-40°C~+85°C
Control distance	Approx 60m(100 meters is customized)

## Standard Configuration

- One transmitter (with hanging belt)
- One dust bag
- One receiver
- Receiver is with 1.6 meter cable
- Battery: one pair
- One receive antenna
- Operation and maintenance manual

## Safety features

Each radio remote control system functions in all manner of operational conditions equipped with their own unique identity code (ID-code). This means that only the correct control unit can activate and control its matching receiver (crane/machine) for maximum safety. The system is with FCC and CE certificates.



# F21-2S/2D RECEIVER



F21-2S

F21-2D

MODEL: F21-2S RXC  
ITEM CODE: 921-102-011  
Dimension: 88x92x62mm  
Weight: 290g

MODEL: F21-2DRXC  
ITEM CODE: 921-103-011  
Dimension: 88x92x62mm  
Weight: 320g

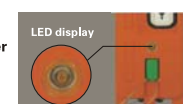


## Receiver Parameters: F21-RXC

Material	Glass-Fiber PA
Enclosure protection class	IP65
Frequency range	VHF: 310~331MHz; UHF: 425~446MHz
Receiver sensitivity	-110dBm
Receiver power supply	18~65V AC/DC, 65~440V AC/DC ( optional )
Output contactor capacity	8A sealed relay output (with AC 250V/10A relays, 10A fuse)
Control distance	Approx 60m (100 meters is customized)
Safety code	32 bits (4.3 billion)
Temperature range	-40°C~+85°C



The series NO. and production date are laser markings of anti-counterfeit.



The transmitter is with LED display. When power is low, it provides optical signal to warn the user to replace batteries.

**Application:**  
Single-hook, single-speed electric hoist or hoist-type traffic and industrial remote control with 6 contacts or less.

# ➤ F21-4S/4D TRANSMITTER

Economical, safe, convenient



MODEL: F21-4S-TX  
ITEM CODE: 921-004-001  
Dimension: 156 x 61 x 51 mm  
Weight: 255g(without batteries)

MODEL: F21-4D-TX  
ITEM CODE: 921-004-002  
Dimension: 156 x 61 x 51 mm  
Weight: 255g(without batteries)



F21-4S

F21-4D

## Product features

- 4 buttons(D means double steps), spare button
- 8 control contactors
- With battery voltage warning device, the power supply is cut off during low power
- Program the button function by computer interface
- Up/down, east/west can be programmed to interlock or non-interlock
- The spare button can be programmed to start, toggle or normal, etc

## Transmitter Parameters: F21-TX

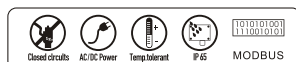
Material	Glass-Fiber PA
Enclosure protection class	IP65
Frequency range	VHF: 310~331MHz; UHF: 425~446MHz
Transmitter power	≤10dBm
Transmitter power supply	2 AA batteries
Safety code	32 bits (4.3 billion)
Temperature range	-40℃~+85℃
Control distance	Approx 100m (200 meters is customized)

## Standard Configuration

- One transmitter (with hanging belt)
- One dust bag
- One receiver
- Receiver is with 1.6 meter cable
- Battery: one pair
- One receive antenna
- Operation and maintenance manual

## Safety features

Mechanical equipment safety 2006/42:  
Priority Emergency Stop "Stop"  
According to EN13849-1 and 2, PL performance level Electromagnetic compatibility EMC protection. The system is with FCC and CE certificates.



# ➤ F21-4S/4D RECEIVER



MODEL: F21-RXC  
ITEM CODE: 921-100-112  
Dimension: 205x86x80mm  
Weight: 620g



## Receiver Parameters: F21-RXC

Material	Glass-Fiber PA
Enclosure protection class	IP65
Frequency range	VHF: 310~331MHz; UHF: 425~446MHz
Receiver sensitivity	-110dBm
Receiver power supply	18~65V AC/DC, 65~440V AC/DC ( optional )
Output contactor capacity	8A sealed relay output (with AC 250V/10A relays, 10A fuse)
Control distance	Approx 100m (200 meters is customized)
Safety code	32 bits (4.3 billion)
Temperature range	-40℃~+85℃



## The green technology innovation

The green design of power supply is to enhance not only the products adaptability on the environment, but also the concern on the social green idea. We will certainly progress with the times.



## Application:

Single-hook, single-speed electric hoist or hoist-type traffic and industrial remote control with 8 contacts or less



# ➤ **F21-E1/E2/E1B TRANSMITTER** Economical, safe, convenient



MODEL: F21-E1-TX  
ITEM CODE: 921-006-001  
Dimension: 156 x 61 x 51 mm  
Weight: 255g(without batteries)

MODEL: F21-E2-TX  
ITEM CODE: 921-006-002  
Dimension: 156 x 61 x 51 mm  
Weight: 255g(without batteries)

MODEL: F21-E1B-TX  
ITEM CODE: 921-006-101  
Dimension: 164 x 75 x 46 mm  
Weight: 315g(without batteries)



F21-E1

F21-E2

F21-E1B

## **Product features**

- 8 operation buttons, 6 single-speed buttons and "STOP"
- 8 control contactors
- With battery voltage warning device, the power supply is cut off during low power
- Program the button function by computer interface
- Up/down, east/west, north/south can be programmed to interlock or non-interlock.
- The spare button can be programmed to start, toggle or normal, etc

## **Transmitter Parameters: F21-TX**

Material	Glass-Fiber PA
Enclosure protection class	IP65
Frequency range	VHF: 310~331MHz; UHF: 425~446MHz
Transmitter power	≤10dBm
Transmitter power supply	2 AA batteries
Safety code	32 bits (4.3 billion)
Temperature range	-40℃~+85℃
Control distance	Approx 100m (200 meters is customized)

## **Standard Configuration**

- One transmitter (with hanging belt)
- One dust bag
- One receiver
- Receiver is with 1.6 meter cable
- Battery: one pair
- Operation and maintenance manual

## **Safety features**

1. Unique 4.3 billion ID code
2. Hamming code
3. Enhanced watch-dog circuit
4. With FCC and CE certificate



# ➤ **F21-RXC RECEIVER**

## **Start protection circuit**

Each system has a dedicated testing circuit. Before the system start, the transmitting system test all switch contacts and receiving system test relays. Only both procedures are passed, then whole system start working.

MODEL: F21-RXC  
ITEM CODE: 921-100-112  
Dimension: 205x86x80mm  
Weight: 620g



## **Receiver Parameters: F21-RXC**

Material	Glass-Fiber PA
Enclosure protection class	IP65
Frequency range	VHF: 310~331MHz; UHF: 425~446MHz
Receiver sensitivity	-110dBm
Receiver power supply	18~65V AC/DC, 65~440V AC/DC ( optional )
Output contactor capacity	8A sealed relay output (with AC 250V/10A relays, 10A fuse)
Control distance	Approx 100m (200 meters is customized)
Safety code	32 bits (4.3 billion)
Temperature range	-40℃~+85℃



Connect buckle



Damping rubber



Safety code

## **Application:**

Single-hook, single-speed electric hoist or hoist-type traffic and industrial remote control with 8 contacts or less.

# F23-A++/BB TRANSMITTER

Economical, safe, durable



MODEL: F23-A++-TX  
ITEM CODE: 923-010-101  
Dimension: 164 x 75 x 46 mm  
Weight: 328g(without batteries)

MODEL: F23-BB-TX  
ITEM CODE: 923-012-101  
Dimension: 164 x 75 x 46 mm  
Weight: 328g(without batteries)

disabled NO.3  
and NO.4 buttons



F23-A++

F23-BB

## Product Features

- 12 single speed buttons, one "STOP"
- 12 control contactors
- With battery voltage warning device, the power supply is cut off during low power
- Safety switch key is to prevent from unauthorized user
- Program the button function by computer interface
- Up/down, east/west, south/north can be programmed to interlock or non-interlock
- Start key can be programmed to start, toggle switch, normal or other functions
- The spare buttons can be programmed to normal, interlock, toggle or start, etc

## Transmitter Parameters: F23-TX

Material	Glass-Fiber PA
Enclosure protection class	IP65
Frequency range	VHF: 310~331MHz; UHF: 425~446MHz
Transmitter power	≤10dBm
Transmitter power supply	2 AA batteries
Safety code	32 bits (4.3 billion)
Temperature range	-40℃~+85℃
Control distance	Approx 100m (200 meters is customized)

## Standard Configuration

- One transmitter (with hanging belt)
- One dust bag
- One receiver
- Receiver is with 1.6 meter cable
- Battery: one pair
- One receive antenna
- Operation and maintain manual

## Safety features

Each radio remote control system functions in all manner of operational conditions equipped with their own unique identity code (ID-code). This means that only the correct control unit can activate and control its matching receiver (crane/machine) for maximum safety With FCC and CE Certificates .



# F23-A++/BB RECEIVER



F23-A++

F23-BB

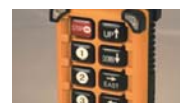
MODEL: F23-A++-RXC  
ITEM CODE: 923-100-012  
Dimension: 168x166x93mm  
Weight: 780g

MODEL: F23-BB-RXC  
ITEM CODE: 923-610-011  
Dimension: 320x253x107mm  
Weight: 2020g



## Receiver Parameters: F23-RXC

Material	Glass-Fiber PA
Enclosure protection class	IP65
Frequency range	VHF: 310~331MHz; UHF: 425~446MHz
Receiver sensitivity	-110dBm
Receiver power supply	18~65V AC/DC, 65~440V AC/DC ( optional )
Output contactor capacity	8A sealed relay output (with AC 250V/10A relays, 10A fuse)
Control distance	Approx 100m (200 meters is customized)
Safety code	32 bits (4.3 billion)
Temperature range	-40℃~+85℃



Button is English or arrow  
(optional, customized)



Standard antenna interface  
optional enhanced antenna

## Application:

MD double-speed electric hoist or double-speed, double-hook/single-speed crane or any industrial remote control with 12 contacts or less.



# F24 SERIES TRANSMITTER

Safe, reliable, functional, operational



MODEL: F24-6S/D-TX  
ITEM CODE: 924-006-001  
Dimension: 156 x 61 x 51 mm  
Weight: 255g(without batteries)

MODEL: F24-8S/D-TX  
ITEM CODE: 924-008-001  
Dimension: 186 x 61 x 51 mm  
Weight: 280g(without batteries)

MODEL: F24-10S/D-TX  
ITEM CODE: 924-010-001  
Dimension: 186 x 61 x 51 mm  
Weight: 280g(without batteries)

MODEL: F24-12S/D-TX  
ITEM CODE: 924-012-001  
Dimension: 186 x 61 x 51 mm  
Weight: 280g(without batteries)



F24-6S/D

F24-8S/D

F24-10S/D

F24-12S/D

## Product features

- 7-12 buttons (D means double steps), STOP, START, spare buttons
- Up to 20 control contacts
- With battery voltage warning device, the power supply is cut off during low power
- Safety switch key is to prevent from unauthorized user
- Program the button function by computer interface
- Up/down, east/west, south/north can be programmed to interlock or non-interlock
- Power key can be programmed to start, toggle switch, normal or other functions
- The spare buttons can be programmed to normal, interlock, toggle or start, etc

## Transmitter Parameters: F24-TX

Material	Glass-Fiber PA
Enclosure protection class	IP65
Frequency range	VHF: 310~331MHz; UHF: 425~446MHz
Transmitter power	≤10dBm
Transmitter power supply	2 AA batteries
Safety code	32 bits (4.3 billion)
Temperature range	-40°C~+85°C
Control distance	Approx 100m (200 meters is customized)

## Standard Configuration

- One transmitter (with hanging belt)
- One dust bag
- One receiver
- Receiver is with 1.6 meter cable
- Battery: one pair
- One receive antenna
- Operation and maintenance manual

## Safety features

Each radio remote control system functions in all manner of operational conditions equipped with their own unique identity code (ID-code). This means that only the correct control unit can activate and control its matching receiver (crane/machine) for maximum safety.



# F24 SERIES RECEIVER

MODEL: F24-RXC  
ITEM CODE: 924-100-102~112  
Dimension: 210x162x107mm  
Weight: 1220g

F24 series remote control system have 80 channels in its frequency range. Even in situation where many sets of remote control are used in the same time, working channel can be easily chose without interfering with other signals and hundred-percent safe and reliable. With advanced design and high quality components, the system is durable and easy to operate. It can easily adapt to complicated and harsh industrial environments such as extra-high/low temperature, dusty, strong vibration, greasy, heavy humidity, etc.

Transmitter and receiver have many functions used in conjunction. The emergency stop button is located in the upper left of transmitter which meets the safety and ergonomics. When stop button is pressed, the system stop working immediately and unconditionally. Transmitter is equipped with a shell of more consistent with ergonomics. The new shell material is more durable, lighter and thinner.

There are 30 types of different configurations based on customer's requirements. Maximum 20 control contacts are sufficient to meet most of requirements. The technique, function, security and flexibility satisfy all your requirements. It is the most advanced remote control system.

TELEcontrol



## Receiver Parameters: F24-RXC

Material	Glass-Fiber PA
Enclosure protection class	IP65
Frequency range	VHF: 310~331MHz; UHF: 425~446MHz
Receiver sensitivity	-110dBm
Receiver power supply	18~65V AC/DC, 65~440V AC/DC ( optional )
Output contactor capacity	8A sealed relay output (with AC 250V/10A relays, 10A fuse)
Control distance	Approx 100m (200 meters is customized)
Safety code	32 bits (4.3 billion)
Temperature range	-40°C~+85°C



Standard antenna interface  
optional enhanced antenna



The on/off switch on the transmitter is  
to prevent from being used by the  
unauthorized persons.



Dual switch  
power supply

## Application:

The heavy industrial machinery, such as lifting machinery, crane, hydraulic crane, concrete pump, roller coaster, mining machinery, hoist, truck crane, dump truck, lifting locomotive, lifting machine etc



# F24-D TRANSMITTER

Safe, reliable, functional, operational



MODEL: F24-D-TX  
ITEM CODE: 924-010-101  
Dimension: 186 x 61 x 51 mm  
Weight: 280g (without batteries)

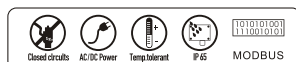
With full sealed and two steps buttons, the products' performance is improved and service life is longer. The "mushroom" emergency stop button is with self-locking function which ensures complete safety. Enhanced transmitter power is to increase the control distance to be 200 meters.

## Product features

- 10 double speed buttons, stop, start, spare buttons
- 22 control contactors
- Battery voltage warning device, the power supply is cut off during low power
- Safety key switch is to prevent from unauthorized users
- Program the button function by computer interface
- Up/down, east/west, south/north can be programmed to interlock or non-interlock
- Start key can be programmed to start, toggle switch, normal or other functions
- The spare buttons can be programmed to start, toggle, interlock or normal, etc

## Transmitter Parameters: F24-TX

Material	Glass-Fiber PA
Enclosure protection class	IP65
Frequency range	VHF: 310~331MHz; UHF: 425~446MHz
Transmitter power	≤10dBm
Transmitter power supply	2 AA batteries
Safety code	32 bits (4.3 billion)
Temperature range	-40°C~+85°C
Control distance	Approx 100m (200 meters is customized)



F24-D

## Standard Configuration

- One transmitter (with hanging belt)
- One dust bag
- One receiver
- Receiver is with 1.6 meter cable
- Battery: one pair
- One receive antenna
- Operation and maintenance manual

## Safety features

Each radio remote control system functions in all manner of operational conditions equipped with their own unique identity code (ID-code). This means that only the correct control unit can activate and control its matching receiver (crane/machine) for maximum safety.

# F24-D RECEIVER

MODEL: F24-D-RXC  
ITEM CODE: 924-610-012  
Dimension: 320x253x107mm  
Weight: 2020g



## Receiver Parameters: F24-RXC

Material	Glass-Fiber PA
Enclosure protection class	IP65
Frequency range	VHF: 310~331MHz; UHF: 425~446MHz
Receiver sensitivity	-110dBm
Receiver power supply	18~65V AC/DC, 65~440V AC/DC (optional)
Output contactor capacity	8A sealed relay output (with AC 250V/10A relays, 10A fuse)
Control distance	Approx 100m (200 meters is customized)
Safety code	32 bits (4.3 billion)
Temperature range	-40°C~+85°C



Connection method is flexible and suitable for special requirements.



The LED of receiving system indicates the working states to see the operation voltage of the receiving system

## Application:

It is mainly used in metallurgy, shipbuilding, container terminals, warehousing, machinery manufacturing, chemical industry, paper, construction and engineering machinery and other fields with lifting controlled by remote controls.





# F24-60 TRANSMITTER

Intelligent, powerful, safe, reliable, outstanding

## Main performance of TELEcontrol remote control system

The emergency stop signal of telecontrol remote control system includes emergency stop signal and power off signal during off work. Emergency stop signal command switches off the receiving system actively (without any effective output). It needs only 20ms from signal sending to receiving. The power off signal during off work is that the receiving system does not receive effective signals from transmitter during certain time (for examples, the battery is low power, the distance is out of control range and no operation for long time etc.), then the receiving system is off automatically. The time can be programmed (10 minutes, 20 minutes, 1 hour, 4 hours etc.)

## System address

Each remote control system is programmed with different system address codes. Each code is used only one time and they are not repeated to avoid interference and wrong signal between the systems.

## Digital processing system

With CPU microprocessor and transmitting RFID chip, the transmitting system assures the instruction codes be transmitted accurately and fast. With CPU microprocessor and receiving RFID chip, the receiving system assures accurate and reliable decoding. To ensure the perfect safety and reliability, the receiving system is featured with brake monitor circuit which makes correction on the received signals and decoded digital signals. The CPU makes self-testing to ensure the stability of the remote control system.



TELEcontrol



## The display panel

The LED of receiving system indicates the working states to see the operation voltage of the receiving system, signal transmitting, the first and second testing circuit is normal or not. It is used for system adjustment and maintenance.



## Start protection circuit

Each system has a dedicated testing circuit. Before the system start, the transmitting system test all switch contacts and receiving system test relays. Only both procedures are passed, then whole system start working.



## Transmitter letterings

The letters and graphics are clear. The panel makes the operation to be more intuitive, more convenient

The on/off button on the transmitter prevent from being used by those unauthorized persons.



## TELEcontrol miniature joysticks

With twenty years application and improving, TELEcontrol joysticks of special material are proved to be the best products. Ten years guarantee eliminates the customers worries.



## The green technology innovation

The green design of power supply is to enhance not only the products adaptability on the environment, but also the concern on social hot green idea. We will certainly progress with the times.





# F24-60 TRANSMITTER

Intelligent, powerful, safe, reliable, outstanding



MODEL: F24-60-TX  
ITEM CODE: 924-600-001  
Dimension: 210 x 152 x 128 mm  
Weight: 980g (without batteries)



F24-60

## Product features

- 6 buttons, 4 three-position or two-position rotating switch, stop, start, spare button.
- 2 five-step joysticks with 10 million times of mechanical life and pure proportion.
- Up to 40 control contacts
- With battery voltage warning device, the power supply is cut off during low power
- Safety switch key is to prevent from unauthorized user
- Program the button function by computer interface
- Start key can be programmed to start, toggle switch, normal or other functions
- The spare buttons can be programmed to start, toggle, interlock or normal, etc
- Installed with proportional module for analog signal output (optional)

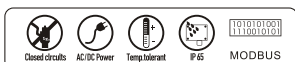
## Transmitter Parameters: F24-TX

Material	Glass-Fiber PA
Enclosure protection class	IP65
Frequency range	VHF: 310~331MHz; UHF: 425~446MHz
Transmitter power	≤10dBm
Transmitter power supply	2 AA batteries
Safety code	32 bits (4.3 billion)
Temperature range	-40°C~+85°C
Control distance	Approx 300m

## Standard Configuration

- One transmitter (with waist belt)
- One receiver
- Receiver is with 2.5 meter cable
- Battery: two pairs
- One receive antenna
- One battery box
- Operation and maintenance manual

**Safety** Each radio remote control system functions in all manner of operational conditions equipped with their own unique identity code (ID-code). This means that only the correct control unit can activate and control its matching receiver (crane/machine) for maximum safety.



# F24-60 RECEIVER

MODEL: F24-60-RXC  
ITEM CODE: 924-610-011  
Dimension: 320x253x107mm  
Weight: 2020g

As double joystick remote control, F24-60 is one of the most advanced crane controllers on the market and it is developed in ISO9001 certificated factory with more than 21 years history.

F24-60 is designed with strong safety features. It has more than 4.3 billion unique safety code, automatic frequency tracking and locking and failure self-diagnosis, etc. Stop button is automatic. When components such as switches, joysticks, or relays are in fault, The system stops working till it is fixed.

F24-60 has extraordinary communication design—simultaneous encoding and decoding transmission, interference elimination, error detection and correction, and frequency resettable manually.

F24-60 has large amounts of programmable functions and is extensible using Windows compatible software with free update. Functions are all programmable.



## Receiver Parameters: F24-RXC

Material	Glass-Fiber PA
Enclosure protection class	IP65
Frequency range	VHF: 310~331MHz; UHF: 425~446MHz
Receiver sensitivity	-110dBm
Receiver power supply	18~65V AC/DC; 65~440V AC/DC (optional)
Output contactor capacity	8A sealed relay output (with AC 250V/10A relays, 10A fuse)
Control distance	Approx 300m
Safety code	32 bits (4.3 billion)
Temperature range	-40°C~+85°C



**The green technology innovation**  
The green design of power supply is to enhance not only the products adaptability on the environment, but also the concern on social hot green idea. We will certainly progress with the times.



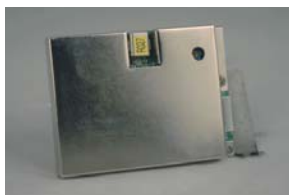
Installation of battery box

**Application:**  
Double joystick wireless remote control, F24-60 is suitable for double hooks and multi-speed, multi-function and proportional crane and industrial remote controls with complicated functions.



# F26 SERIES TRANSMITTER

Intelligent, flexible, safe, reliable



MODEL: F26-A-TX  
ITEM CODE: 926-010-101  
Dimension: 186x 61 x 51 mm  
Weight: 255g(without batteries)

MODEL: F26-B-TX  
ITEM CODE: 926-012-101  
Dimension: 186x 61 x 51 mm  
Weight: 255g(without batteries)

MODEL: F26-C-TX  
ITEM CODE: 926-006-101  
Dimension: 156 x 61 x 51 mm  
Weight: 255g(without batteries)



## Product features

- 7-11 buttons, stop and spare button
- Up to 18 control contacts
- With battery voltage warning device, the power supply is cut off during low power
- Program the button function by computer interface
- Up/down, east/west, south/north can be programmed to interlock or non-interlock
- Start key can be programmed to start, toggle switch, normal or other functions
- The spare buttons can be programmed to start, toggle, interlock or normal, etc

## Transmitter Parameters: F26-TX

Material	Glass-Fiber PA
Enclosure protection class	IP65
Frequency range	VHF: 310~331MHz; UHF: 425~446MHz
Transmitter power	≤10dBm
Transmitter power supply	2 AA batteries
Safety code	32 bits (4.3 billion)
Temperature range	-40℃~+85℃
Control distance	Approx 100m (200 meters is customized)

## Standard Configuration

- One transmitter (with hanging belt)
- One dust bag
- One receiver
- Receiver is with 1.6 meter cable
- Battery: one pair
- One receive antenna
- Operation and maintenance manual

## Dual power supply:

Focus on power supply module for thirteen years, the power supply is more stable and energy saving. It is with dual power supply, AC/DC 18-65V and 65-440v which can be switched by user.

# F26 SERIES RECEIVER

MODEL: F26-RXC  
ITEM CODE: 923-100-012  
Dimension: 168x166x93mm  
Weight: 780g



The frequency range for F26 series remote control system is 315MHz and 433MHz. With narrowband FM method, it has 80 channels. Even in situation where many sets of remote control are used in the same time, working channel can be easily chose without interfering with other signals and hundred-percent safe and reliable. It is the choice for vehicle equipments, winches, cranes, and other remote controls. With advanced design and high quality components, the system is durable and easy to operate.

F26 series remote control system can easily adapt to complicated and harsh industrial environments such as extra-high/low temperature, dusty, strong vibration, greasy, heavy humidity, etc. An emergency stop button is located in the upper left of transmitter which meets the safety and principle of human body engineering. When stop button is pressed, the system stop working immediately and unconditionally. Transmitter is in accordance with EN954-1, 3 safety standard. Transmitter is equipped with a shell of more consistent with human body engineering. The new shell material is more durable, lighter and thinner.

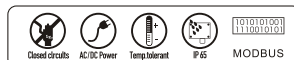
## Receiver Parameters: F26-RXC

Material	Glass-Fiber PA
Enclosure protection class	IP65
Frequency range	VHF: 310~331MHz; UHF: 425~446MHz
Receiver sensitivity	-110dBm
Receiver power supply	18-65V AC/DC, 65~440V AC/DC ( optional )
Output contactor capacity	8A sealed relay output (with AC 250V/10A relays, 10A fuse)
Control distance	Approx 100m (200 meters is customized)
Safety code	32 bits (4.3 billion)
Temperature range	-40℃~+85℃

Model Name	Function Description
F26-A1	Eight single-speed buttons
F26-A2	The first two buttons are double speed and others are single speed.
F26-A3	Eight two-speed buttons
F26-B1	Ten single-speed buttons
F26-B2	The first two buttons are double speed and others are single speed
F26-B3	Ten two-speed buttons
F26-C1	The first two buttons are double speed and others are single speed.
F26-C2	The first four buttons are double speed and others are single speed.
F26-C3	Six two-speed buttons

## Application:

MD double-speed electric hoist or double-speed, double-hook/single-speed crane and industrial remote control with 18 contacts or less.



# EF-24 TRANSMITTER

Explosion-proof design



MODEL: EF24-TX  
ITEM CODE: 924-400-001  
Dimension: 186 x 61 x 51 mm  
Weight: 280g(without batteries)



EF24-6S/D

EF24-8S/D

EF24-10S/D

EF24-12S/D

## Product features

- 10 double steps pushbuttons + EMERGENCY STOP + START KEY + SPARE
- 20 control contactors
- Battery voltage warning device, the power supply is cut off during low power
- Safety key switch is to prevent from unauthorized users
- Program the button function by computer interface
- Up/down, east/west, south/north can be programmed to to interlock or non-interlock
- Start key can be programmed to start, toggle switch, normal or other functions
- The spare buttons can be programmed to start, toggle, interlock or normal, etc

## Transmitter Parameters: EF24-TX

Material	Glass-Fiber PA
Enclosure protection class	IP65
Frequency range	VHF: 310~331MHz; UHF: 425~446MHz
Transmitter power	≤10dBm
Transmitter power supply	4 AA batteries
Safety code	32 bits (4.3 billion)
Temperature range	-40℃~+85℃
Control distance	Approx 100m (200 meters is customized)

## Standard Configuration

- One transmitter(with hanging belt)
- One dust bag
- One receiver
- Receiver is with 1.6 meter cable
- Battery: one pair
- One receive antenna
- Operation and maintenance manual

## Dual power supply:

EF24 is new series explosion-proof radio remote control based on F24 series, strictly complies with explosion-proof criterion GB3638.1 and GB3836.4, and has passed EXIBII BT4 intrinsic safety certification, can operate safely in the chemical and petrochemical industries, mining and other flammable, explosive and hazardous environments,



# EF-24 RECEIVER

MODEL: EF24-RXC  
ITEM CODE: 924-100-103  
Dimension: 210x162x107mm  
Weight: 1220g



## Safety of Receiver Operation

The system is with explosion-proof casing and inner electronic circuit safe solution and it meets ATEX rules and strictly complies with explosion-proof standard. The emergency stop circuit and control with duplex redundant and safety relay with forcibly guided (mechanically linked) contacts which make it meets the E-stop class Gat.3 in The European mechanical equipment standard.

To ensure safety, continuous wireless communication device make receiver stop passively when the radio signal is disconnected or is interfered.

Buttons can be programmed to interlock to avoid opposite operation.



## Receiver Parameters: EF24-RXC

Material	Glass-Fiber PA
Enclosure protection class	IP65
Frequency range	VHF: 310~331MHz; UHF: 425~446MHz
Receiver sensitivity	-110dBm
Receiver power supply	18~65V AC/DC, 65~440V AC/DC ( optional )
Output contactor capacity	8A sealed relay output (with AC 250V/10A relays, 10A fuse)
Control distance	Approx 100m (200 meters is customized)
Safety code	32 bits (4.3 billion)
Temperature range	-40℃~+85℃



Shell is of antistatic material, and adding antistatic agent, the maximum enhancement in the anti-static grade products.

## Application:

Typical applications: It can be widely used in offshore oil field, oil tankers, onshore oilfield, chemical industry, oil refinery, coal mines, paint factory and aircraft maintenance factory.



# EF24-60 TRANSMITTER

Explosion-proof design



MODEL: EF24-60-TX  
ITEM CODE: 924-600-002  
Dimension: 210 x 152 x 128 mm  
Weight: 980g (without batteries)



EF24-60

## Product features

- 6 buttons, 4 three-position or two-position rotating switch, stop, start, spared button.
- 2 five-step joysticks with 10 million times of mechanical life and pure proportion.
- Up to 40 control contacts
- With battery voltage warning device, the power supply is cut off during low power
- Safety switch key is to prevent from unauthorized user
- Program the button function by computer interface
- Start key can be programmed to start, toggle switch, normal or other functions
- The spare buttons can be programmed to start, toggle, interlock or normal, etc
- Installed with proportional module for analog signal output (optional)

## Transmitter Parameters: EF24-TX

Material	Glass-Fiber PA
Enclosure protection class	IP65
Frequency range	VHF: 310~331MHz; UHF: 425~446MHz
Transmitter power	≤10dBm
Transmitter power supply	2 AA batteries
Safety code	32 bits (4.3 billion)
Temperature range	-40°C~+85°C
Control distance	Approx 300m

## Standard Configuration

- One transmitter (with waist belt)
- One receiver
- Receiver is with 2.5 meter cable
- Battery: two pairs
- One receive antenna
- One battery box
- Operation and maintenance manual

## Dual power supply:

EF24 is new series explosion-proof radio remote control based on F24 series, strictly complies with explosion-proof criterion GB3638.1 and GB3836.4, and passed EXIB II BT4 intrinsic safety certification, can operate safely in the chemical and petrochemical industries, mining and other flammable, explosive and hazardous environments.



# EF24-60 RECEIVER

MODEL: EF24-60-RXC  
ITEM CODE: 924-610-012  
Dimension: 320x253x107mm  
Weight: 2020g



## Safety Features

Wireless Communication Safety between Transmitter and Receiver

Continuous wireless communication connection: Based on omnibearing wireless signal transmitting design and barrier free features, operators can handle with lifting equipment precisely and avoid dangerous areas.

Non-repeated 4.3 billion codes are used for system decoding of transmitter and receiver.

Digital communication Hamming code correcting distance is 4 bits (minimum information difference between two groups digital communication)



SPECIAL PRODUCT

## Receiver Parameters: EF24-RXC

Material	Glass-Fiber PA
Enclosure protection class	IP65
Frequency range	VHF310~331MHz, UHF425~446MHz
Receiver sensitivity	-110dBm
Receiver power supply	18~65V AC/DC, 65~440V AC/DC (optional)
Output contactor capacity	8A sealed relay output (with AC 250V/10A relays, 10A fuse)
Control distance	Approx 300m
Safety code	32 bits (4.3 billion)
Temperature range	-40°C~+85°C



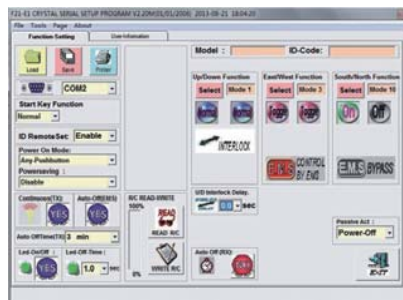
Shell is of antistatic material, and adding antistatic agent, the maximum enhancement in the anti-static grade products.

## Application:

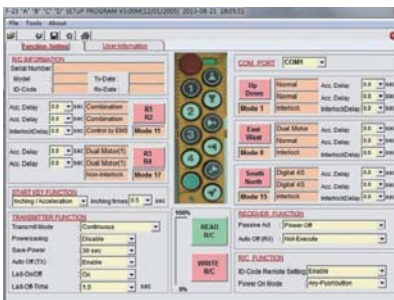
Typical applications: It can be widely used in offshore oil field, oil tankers, onshore oilfield, chemical industry, oil refinery, coal mines, paint factory and aircraft maintenance factory.

# SOLUTIONS

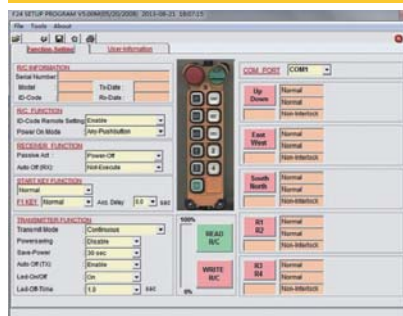
## F21 Function of the software



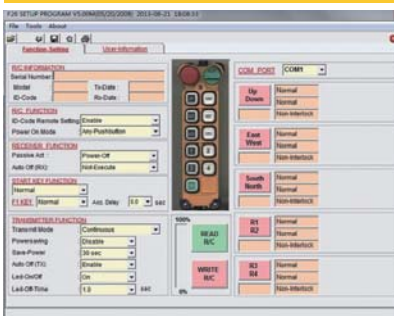
## F23 Function of the software



## F24 Function of the software



## F26 Function of the software



## F24-60 Function of the software



## Maintenance tools



# ACCESSORIES



✓ Copier  
920-101-001



✓ Data line and software  
920-101-002



✓ Shockproofbase  
701-924-001



✓ Waist belt  
701-924-002



✓ shoulder strap  
701-924-003



✓ Joystick  
701-924-004



✓ Battery box  
701-924-005



✓ Emergency stop button  
701-924-006



✓ Rotary switch  
701-924-007



✓ Toggle switch  
701-924-008



✓ Frequency decoding board  
701-924-009



✓ Tag  
701-924-010



✓ Antenna  
701-901-001



✓ Antenna  
701-901-002



✓ Antenna  
701-901-003



✓ Antenna  
701-901-101



✓ Start Switch  
701-901-004



✓ Rubber button  
701-921-001



✓ Emergency stop board  
701-924-011



✓ Relay  
701-901-005



✓ Double speed button  
701-901-006



✓ Single speed button  
701-921-002



✓ Crystal  
701-901-007



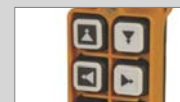
✓ Magnet Key  
701-921-003



✓ Dust bag  
701-924-012



✓ Dust bag  
701-921-004



✓ button label  
701-901-008



✓ Battery  
701-901-009