

V13 1.5 HD TFT & WIFI HD Eyepiece Camera Instruction Manual

Patented products. Unauthorized reproduction will be prosecuted.
Patent No: 202407260816.1

The new fifth generation product is equipped with a high-definition 1.5-inch TFT display and a fully optical WIFI synchronized eyepiece, which can be combined with standard traditional telescopes like monoculars, binocular telescopes, and astronomical telescopes sold around the world perfectly to form into a (WIFI eyepiece camera), and the far-distance videos and images you take can be saved fully in digital cameras or mobile phones.

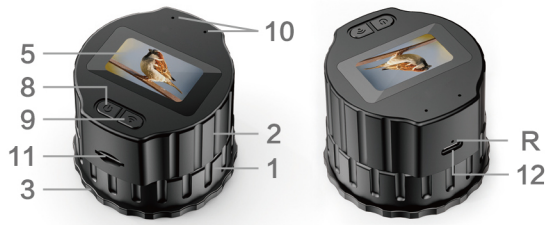
With this product, you can explore the mysteries of the universe, and open the door to it. Children can be correctly guided to explore interests, cultivating their hobbies and allowing them to learn astronomy knowledge. They can understand that there is a wider space beyond the earth. Also, it can be used both on sky and earth. During the day, it can be used for seeing the scenery, and at night watching the stars and observing animals.

Features:

- 1.5-inch high-definition TFT (320X240) display pixels full viewing angle IPS
- Video resolution FHD 1920X1080/
- Supporting screen-off and power-saving function (APP settings), the screen is off in 1 minute by default
- Supporting monocular, binocular telescopes, astronomical and other standard telescopes
- Built-in aluminum battery 800 mAh
- Continuous effective use for about 150 minutes
- Supporting up to TF card storage of 256GB
- Video formats and encoding H.264

high-definition camera can achieve long -distance photo shooting. Applications include: hunting, fishing, bird watching, mountain climbing, outdoor adventure and exploration and concert. Truly your best buddy!

Thank you for choosing our product, please read the user manual carefully to ensure proper installation and use.



Installation procedures:

1.Unscrew the mounting groove 2.Install the electronic eyepiece 3.Tighten the mounting groove 4.Open the mobile phone APP to connect to the electronic eyepiece 5. View the 1.5TFT screen 6.Watch the mobile phone screen 7.Manually adjust the telescope focal length 8.Press the Start button 9.WiFi button 10.LED Light 11.TF card slot 12.USB Port

1.5-inch high-definition screen display:

recording timing, WIFI on/off, resolution, card status, and time characters of year, month, and day.

Use of ON/OFF buttons:

Long press the power button for about 3 seconds to turn on your eyepiece. When blue light is always on(without card), or when blue light flashes (with card), it indicates video shooting is ready. Long press power button for about 3 seconds to shut off the eyepiece.

Open and Close WiFi:

After the eyepiece is powered on, press and hold the WiFi button for about 2 seconds. Once the green light flashes, it indicates that WiFi is opened and is ready for connecting to the mobile phone. Long press the WiFi button for about 2 seconds and close WiFi, the green light is off.

Charge the eyepiece:

In the state of no power, insert USB/DC to charge the eyepiece. Red light is on during charging. After charging is completed, the red light is off.

The eyepiece supports USB/DC or power bank charging while working.

I. Download and Installation:

Download via IOS/Android APP Store
Scan the QR code from the packaging box or the manual cover. After the installation is completed, click the QR code to find the Viidure, and open it, as shown below

WIFI name: ZHENYI-XXXX
WIFI password: Enter without password. Users can modify it through the APP, and there is no password when leaving the factory.



Viidure

II. Add a Device

Mobile Phone: Enter the system settings WIFI and find the local WIFI hotspot ZHENI-XXXX. After selecting it, enter it without filling in password, and start a WIFI point-to-point connection. Return to the mobile phone page and find the downloaded (Lufengzhe) APP, click to enter the APP, and add a automobile data recorder. After the device is added, the video can be viewed on the mobile APP.

III. Introduction to Functions

1. Recorder: This page manages recording files. The recorder can be added, viewed or deleted. You can enter the video preview interface of the recorder.

2. Album: Pictures and videos downloaded from the recorder to your mobile phone can be managed here.

3: Supporting the screen off power-saving function. The screen is off in 1 minute by default, or it can be set to 3 minutes or 5 minutes .

4. More APP language settings.
5. It supports watching on two mobile phones at the time.
6. It supports 180 degrees up and down video rotation.

Connecting to PC:

Insert the matching USB cable to connect to the computer, and click the WIFI button twice to automatically enter the U disk mode, then you can copy and edit local videos.

IV. Introduction to Functions of WiFi Recorder:

Taking photos: Operate the recorder and complete taking photos for one time. After the completion, photos are saved in the recorder. The photos can be downloaded to your mobile phone.

Zoom in/zoom out: Go to full screen of the video or exit full screen mode.

(1) Recorder file: Go to file list, set the recording resolution and microphone ON/OFF etc.

(2) Recorder file download:

Tap: recorder file, go to file list interface, tap Select button and select the pictures or videos you need to download, tap Download and start to download files. After downloading is finished, the file is saved on the mobile phone and you can view the files from Album.

Recorder file playback

Tap the recorder file to enter the file list interface. Without downloading, you can directly play the video on the recorder. You can also take pictures of the current play screen while you are watching the video.

Download: Download the video to your phone.

Taking pictures: Take a picture of the currently played screen and save it to your mobile phone.

V. Album:

Go to Album to manage the pictures or videos that are downloaded on your mobile phone. Tap All to the list of all the videos under this menu. The file list is arranged by date. Click Select for multiple selections to operate.

Video: All video files

Picture: All picture files

Emergency: Collision induction files

VI. Play the Videos:

A variety of operations can be performed on the pictures or videos in the album. As per the picture shown below, when you play the videos or the video of the album in the recorder file, you can choose to play with faster speed so as to slow play shut off video with faster video content, for example, one second one frame or 10x speed.

VII. File Editing:

Select files in Album, select Edit, enter Edit interface, the system supports picture editing, filter beautification as well as video editing and adding music etc.