

LOGO

PRODUCT TYPE: KL001B

I-Size 40-105cm≤18kg

I-Size booster seat 100-150cm



WENZHOU HAOPAI CHILDREN'S PRODUCT CO.,LTD

Address: 5th Floor, No. 40 Baicheng Road, Xianyan Street,
Ouhai District, Wenzhou City, Zhejiang Province, P.R. China

Tel.: 86-577-86058869

Only suitable for use in the listed vehicles fitted with 3 point with retractor safety-belts,
approved to ECE Regulation No. 16 or other equivalent standards.

Index

1. Notice • • • • •	3
2. Use in the vehicle • • • • •	6
3. Car Seat Components • • • • •	9
4. Care and Maintenance • • • • •	12
5. Installation • • • • •	21
6. Removal Fabric Cover and Assembly • • • • •	31
7. Cleaning • • • • •	36
8. Checklist • • • • •	36
9. Warranty • • • • •	37

Installing in rearward facing with 5 point harness :40-105cm

Installing in forward facing with 5 point harness :76-105 cm

Installing in forward facing with 3 point belt :100-150 cm

1. NOTICE

NOT TO USE REARWARD FACING ECRS (ECRS = Enhanced Child Restraint System) IN SEATING

POSITIONS WHERE THERE IS AN ACTIVE FRONTAL AIRBAG INSTALLED.

IMPORTANT - DO NOT USE FORWARD FACING BEFORE THE CHILD'S

AGE EXCEEDS 15 MONTHS (Refer to instructions).

Notice regarding i-Size category Enhanced Child Restraint Systems(40-105cm).

This is an i-Size Enhanced Child Restraint System.

It is approved according to UN Regulation No.129, for use in, i-Size

compatible vehicle seating positions as indicated by vehicle manufacturers in the vehicle user's manual.

If in doubt, consult either the Enhanced Child Restraint System manufacturer or the retailer.

Notice regarding i-Size booster seat category Enhanced Child Restraint Systems (100-150cm).

This is i-Size booster seat Enhanced Child Restraint System.

It is approved according to UN Regulation No.129, for use primarily in "i-Size seating positions" as indicated by vehicle manufacturers in the vehicle user's manual.

If in doubt, consult either the Enhanced Child Restraint System manufacturer or the retailer.

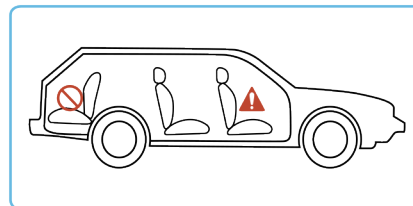
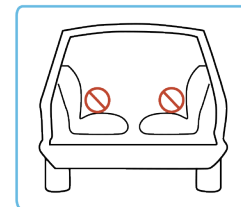
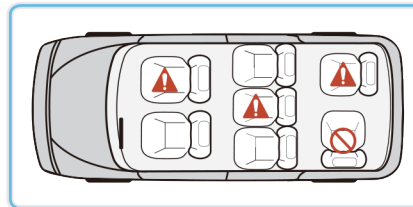
Questions

Contact your supplier or importer if you wish to make a warranty claim or have any other questions.

Your car seat can be fixed safely on almost seats of the cars. However, on some seats the belts are fixed so that proper installation is not possible, in that case, try another seat.

2. Use in the vehicle

You can use your child car seat as follows:



DO NOT use with 2-point belt.
Please install with the 3-point belt.







Please observe the regulations applicable to your particular country.

The safety belt must be approved to ECE R 16 or a comparable standard.

Do not use with 2-point belt.

Can be used if the vehicle seat is equipped with a 3-point belt.

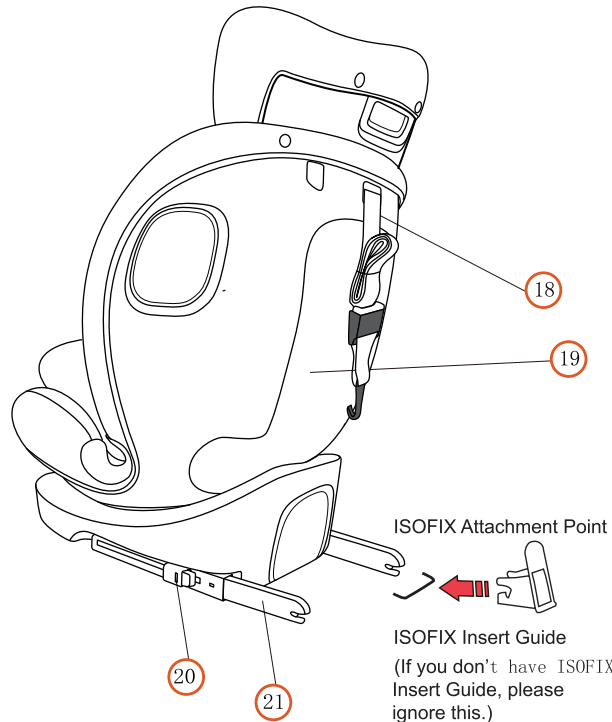
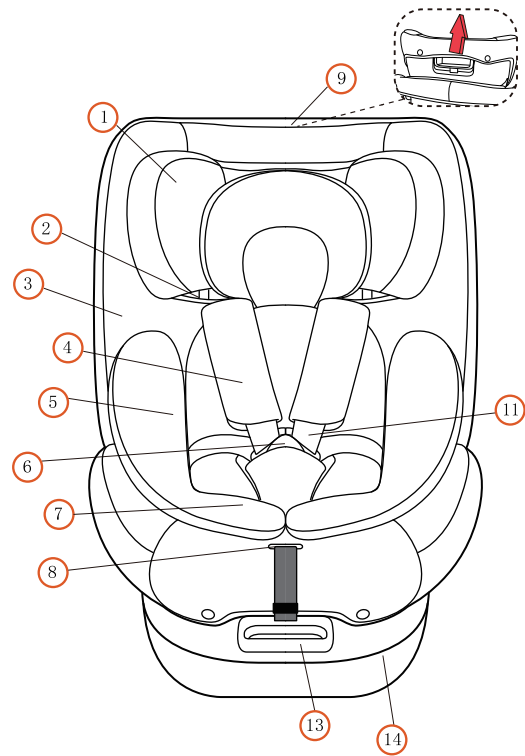
• In the direction of travel	Yes
• Against the direction of travel	Yes
• With 2-point belt	 No
The use of a 2-point belt substantially increases the risk of injury to your child in the event of an accident.	
• With 3-point belt	 Yes
The safety belt must be approved to ECE R 16 or a comparable standard (see test label on belt with an "E" or "e" in a circle).	
• with the ISOFIX and Top Tether anchoring systems	Yes
If there is a front airbag: Slide the passenger seat along way back and refer to any instructions in vehicle owner's manual.	
• On front passenger seat	 Yes
Do not use on passenger seats with a front airbag! The front passenger seat may be used with or without ISOFIX, with the same notes as currently given for the ISOFIX(slide the seat back and refer to vehicle instructions).	
• On outer rear seat	Yes
• On centre rear seat	 Yes
Can be used if the vehicle seat is equipped with a 3-point belt	

(Please observe the regulations applicable to your particular country)

The seat has two installation methods, the following table shows the installation types for each group:

	Tested and approved according to UN R129/04		
	Body size	Installation method	Installation direction
I-size	40-105cm≤18kg	Isofix+top-tether	rearward facing
	76-105cm≤18kg	Isofix+top-tether	forward facing
I-size Booster Seat	100-150cm	Isofix attachments+ adult safety-belt	forward facing
I-size Booster Seat	100-150cm	adult safety-belt	forward facing

3. Car Seat Components



NO.	NAME	NO.	NAME
1	Headrest	12	Backrest Reclining Handle
2	Belt Guide Hook	13	Backrest Rotating Handle
3	Fabric Cover	14	Base
4	Shoulder Pad	15	Backrest Hanger
5	Cushion	16	L-Backrest locker
6	Buckle	17	L-Backrest
7	Crotch Pad	18	Top Tether
8	Adjusting Device	19	Backrest
9	Harness Adjustment Strap	20	ISOFIX Button
10	Headrest Handle	21	ISOFIX Connector
11	Harness		

4. Care and Maintenance

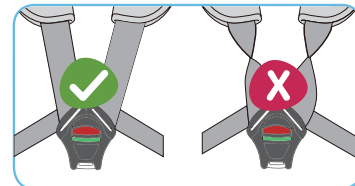
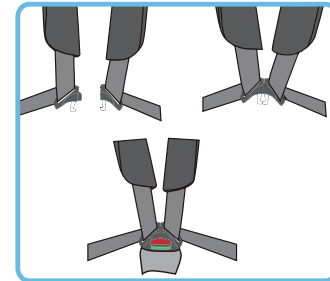
4.1 How to use the harness buckle

4.1.1 Guide the two buckle latches together.

4.1.2 Make sure right side up.

4.1.3 Engage them before putting them into the harness buckle, this should make a CLICK noise.

4.1.4 Pull shoulder belts to remove all slack from the lap section ensuring the harness lies flat and harness buckle locked. Open the harness buckle by pressing the red button.



4.2 Care for the harness buckle

It is vital for the safety of your child that the harness buckle works correctly. Malfunctions of the harness buckle are usually caused by accumulations of dirt or foreign bodies.

Malfunctions are as follows:

- The buckle latches are ejected only slowly when the red release button is pressed.
- The buckle latches will no longer lock home (i.e. they are ejected again if you try to push them in).
- The buckle latches engage without an audible CLICK
- The buckle latches are difficult to insert (you feel resistance).
- The buckle only opens if extreme force is applied.

4.3 Remedy

Wash out the harness buckle so that it functions properly once again.

4.5 Cleaning the harness buckle

4.5.1 Open the harness buckle (press the red button).

4.5.2 Grasp the metal plate from underneath and turn it into a vertical position.

4.5.3 Slide the metal plate through the slot.

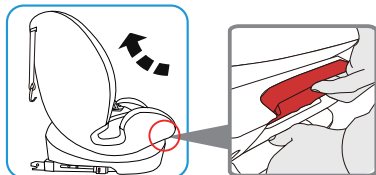
4.5.4 Remove the harness buckle.

4.5.5 Soak the harness buckle in warm water with washing-up liquid for at least an hour. Then rinse and dry it thoroughly.

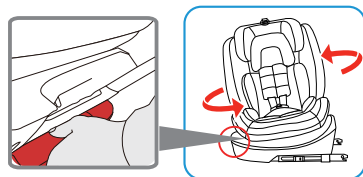
4.6 Adjust the angle of child safety car seat

There are 5 levels adjustment in the child safety car seat. Before fixing a child in the child restraint system, the seat must be set on the recline position for rear-facing use, see picture ③ or in the sitting position for forward-facing use, see picture ①②

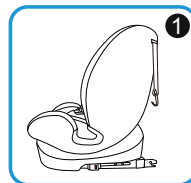
To achieve that, use the recline handle located in front of the child restraint system between the sitting part and the base to adjust the desired position.



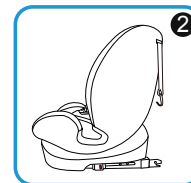
Use backrest reclining handle to adjust the position 1-4 when forward facing installation.



Adjust the rotating handle to swivel the seat 180° for reward facing installation in position 5



Only forward facing



Only forward facing



Only rearward facing

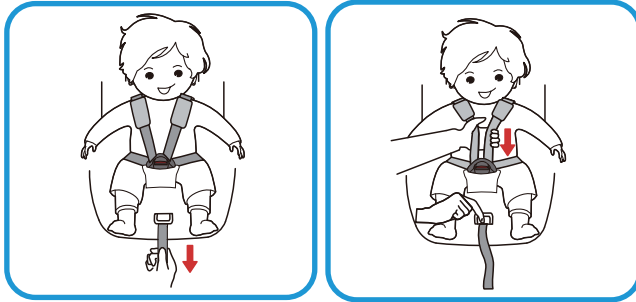
4.7 Adjust the length of harness

In order to protect your child much better, after fix him/her in the child restraint system and lock the buckle, you should tighten the harness so they are snug and flat against the child's body, they should never be twisted or loose.

4.7.1 To tighter the harness, pull the shoulder belt upwards to remove the slack from the lap sections of the harness, at the same time to pull the adjuster crotch belt coming from the lock by your another hand.

4.7.2 To lengthen the harness, press the button on lock between the child's two leg, then pull the two shoulder belt simultaneously in your direction, please note while you are doing this hold the harness, not the harness cover.

CAUTION! Check that the harness straps are not twisted and that they have been correctly inserted in the belt slots on the cover.



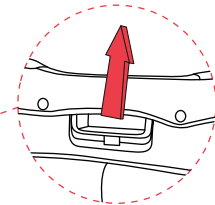
4.8.4 Pull the headrest handle, the shoulder straps will be moved together, select correct height and fix them in the correct position for the child by releasing the headrest handle.

4.8 Adjusting the headrest in an installation with a 5 point harness.40-105cm

4.8.1 A correctly adjusted harness ensures that the diagonal seat belt section is positioned, and gives your child the optimal protection.

4.8.2 The harness must be adjusted to that there is a space two fingers wide between the harness and your child's body.

4.8.3 A Correctly adjusted headrest ensures optimal protection for your child in the safety seat: shoulder belts are at the same level as your child's shoulders.



Pull the headrest handle

4.9 Adjusting the headrest in an installation that uses the vehicle safety belt.40-105cm

- 4.9.1 A correctly adjusted headrest ensures that the diagonal seat belt section is optimally positioned, and gives your child the optimal protection.
- 4.9.2 The headrest must be adjusted so that a space equivalent to two fingers remains between the headrest and the child's shoulders.
- 4.9.3 Pull the headrest handle to adjust headrest to the correct height, then release the headrest handle. Place the safety seat on the car seat, put the child in the seat and check the height.
- 4.9.4 Repeat the process until the correct height is achieved.

5. Installation

Warning:

Don't use forward facing before the child's weight exceeds 15 months

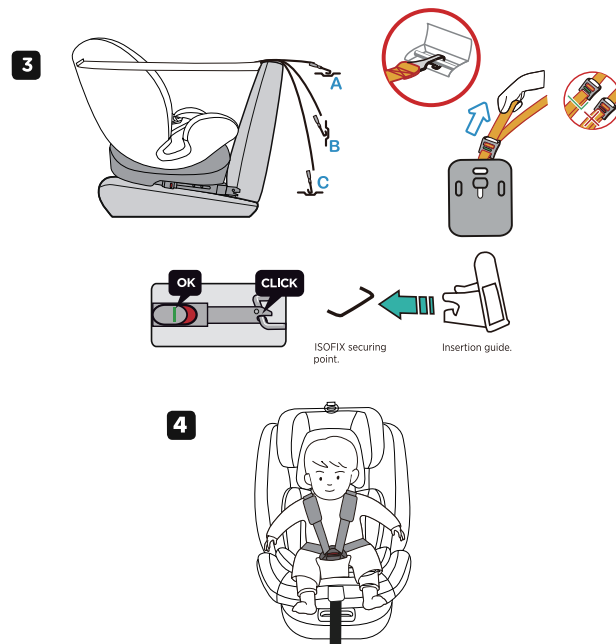
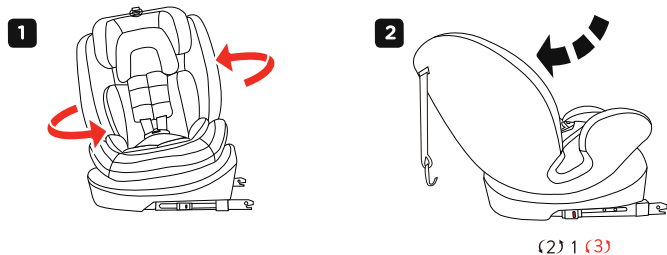
5.1 40-105cm Install Rearward Facing ISOFIX +TOP tether +Harness

- 5.1.1 Check the safety seat is ready to be installed rearward facing, pull the backrest reclining handle to recline the seat fully, adjust the angle of recline to position 5, then release the handle.
- 5.1.2 It is necessary swivel the seat 180° to place the seat in the opposite direction of travel. Release the backrest rotating handle when the seat is in the desired position.
- 5.1.3 Locate the ISOFIX arms in the base of the seat.

- 5.1.4 Place the seat in the back seat of the vehicle in the opposite direction of travel.
- 5.1.5 Hold the safety seat with both hands and insert the two ISOFIX arms firmly into the vehicle's ISOFIX anchoring points until they fasten with a click on both sides. The red button will change to green on both sides.
- 5.1.6 Shake the seat to check that it is correctly anchored to the vehicle's ISOFIX points.
- 5.1.7 Pull out the Top Tether and press the tether strap release button to extend the strap until it is long enough to connect it to the Top Tether anchorage point in the vehicle. If the Top Tether is tightened favorably and correctly, the button will change to green.
- 5.1.8 Make sure the 5-point harness of safety seat has been correctly installed (see section 4.1)
- 5.1.9 Open the buckle, put the shoulder harness to the sides, then put the child into the safety seat. Please check if shoulder harness height is equal to your child's shoulder height, press the adjusting device and pull the shoulder harness to be loose, then press the headrest handle to adjust the shoulder harness to the suitable position.
- 5.1.10 Slide the two tongues together into the buckle. The buckle will not work well till you hear "click". Adjust the child restraint belt to make sure the lap belt is well restrained the child's pelvis. Then tighten the shoulder straps by pulling the adjustable strap at the front of the bottom cushion.

5.1.11 If you want to release your child from the safety seat, press the adjusting device at the front of the bottom, at the same time pull the shoulder straps. Then press the red button on the buckle, place the shoulder straps at the side and let your child out.

5.1.12 The insertion guides facilitate the installation of the safety seat with the aid of the ISOFIX securing points and prevents damage to the upholstery. When not in use they should be removed and stored in a safe place. In vehicles with a reclining back the insertion guides should be removed before the seat is reclined. Problems that may arise are generally the result of accumulation of dirt or foreign bodies in the insertion guides and the clasps. To solve this type of problem simply clean the part in question.



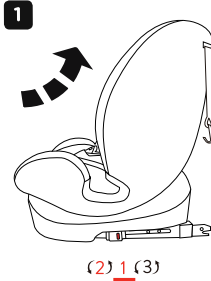
Uninstalling the ISOFIX system

- 1.To free the Top Tether, press the button and pull the tether strap in the opposite direction(the indicator will change from green to red color), in order to take off the top tether.
- 2.To free the ISOFIX anchoring, press backwards the ISOFIX System unlock buttons (the indicator will change from green to red color), in order to free the seat from the vehicle ISOFIX anchoring system.

5.2 76-105cm Install Forward Facing ISOFIX + TOP tether +Harness

- 5.2.1 Ensure L-Backrest locker is locked with Backrest Hanger, the seat is ready to install in forward facing , pull the backrest reclining handle to adjust to angle to any position 1-4, then release the handle.
- 5.2.2 It is necessary swivel the seat 180° to place the seat in the direction of travel. Release the backrest rotating handle when the seat is in the desired position.
- 5.2.3 Locate the ISOFIX arms in the base of the seat.
- 5.2.4 Place the child safety seat in the back seat of the vehicle facing in the direction of travel.
- 5.2.5 Hold the child seat with both hands and insert the two ISOFIX arms firmly into the vehicle's ISOFIX anchoring points until they fasten with a click on both sides. The red button will change to green on both sides .
- 5.2.6 Shake the seat to check that it is correctly anchored to the vehicle's ISOFIX points.
- 5.2.7 Pull out the Top Tether and press the tether strap release button to extend the strap until it is long enough to connect it to the Top Tether anchorage point in the vehicle. If the Top Tether is tightened favorably and correctly, the button will change to green.
- 5.2.8 Make sure the 5-point harness of safety seat has been correctly installed (see section 4.1)

- 5.2.9 Open the buckle, put the shoulder harness to the sides, then put the child into the safety seat. Please check if shoulder harness height is equal to your child's shoulder height, press the adjusting device and pull the shoulder harness to be loose, then press the headrest handle to adjust the shoulder harness to the suitable position.
- 5.2.10 Slide the two tongues together into the buckle. The buckle will not work well till you hear "click". Adjust the child restraint belt to make sure the lap belt is well restrained the child's pelvis. Then tighten the shoulder straps by pulling the adjustable strap at the front of the bottom cushion.
- 5.2.11 If you want to release your child from the safety seat, press the adjusting device at the front of the bottom, at the same time pull the shoulder straps. Then press the red button on the buckle, place the shoulder straps at the side and let your child out.
- 5.2.12 The insertion guides facilitate the installation of the safety seat with the aid of the ISOFIX securing points and prevents damage to the upholstery. When not in use they should be removed and stored in a safe place. In vehicles with a reclining back the insertion guides should be removed before the seat is reclined. Problems that may arise are generally the result of accumulation of dirt or foreign bodies in the insertion guides and the clasps. To solve this type of problem simply clean the part in question.



Note:

Use backrest rotating handle to swivel the seat 180° for forward facing installation, backrest hanger and L-backrest hanger are hooked each other.



Uninstalling the ISOFIX system

1.To free the Top Tether, press the button and pull the tether strap in the opposite direction(the indicator will change from green to red color), in order to take off the top tether.

2.To free the ISOFIX anchoring, press backwards the ISOFIX System unlock buttons (the indicator will change from green to red color), in order to free the seat from the vehicle ISOFIX anchoring system.

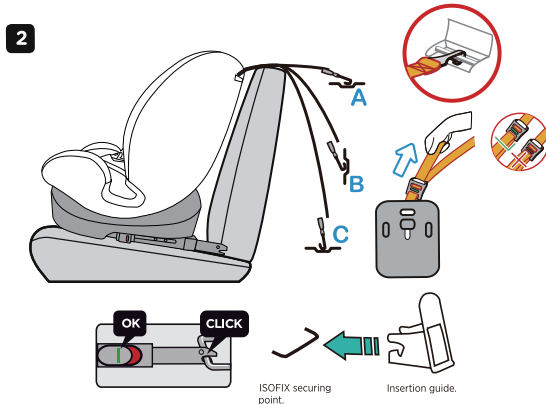
5.3 100-150cm Install Forward Facing ISOFIX + Adult safety-belt

5.3.1 Ensure that the child seat's 5-point harness and buckle is stored correctly(see 4.4)

5.3.2 Ensure the seat is ready to install in forward facing (Group 2/3), pull the backrest reclining handle to adjust to angle to any position 1 or 2, then release the handle.

5.3.3 It is necessary swivel the seat 180° to place the seat in the direction of travel. Release the backrest rotating handle when the seat is in the desired position.

5.3.4 Before installing the safety seat, place your child in the seat and adjust the headrest to the correct height(see 4.9)



5.3.5 Place the child safety seat in the back seat of the vehicle facing in the direction of travel

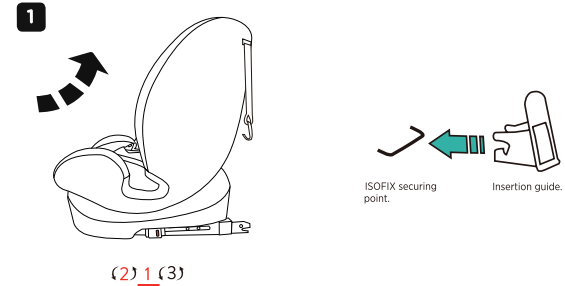
5.3.6 Hold the child seat with both hands and insert the two ISOFIX arms firmly into the vehicle's ISOFIX anchoring points until they fasten with a click on both sides. The red button will change to green on both sides .

5.3.7 Shake the seat to check that it is correctly anchored to the vehicle's ISOFIX points.

5.3.8 Place your child in the safety seat.

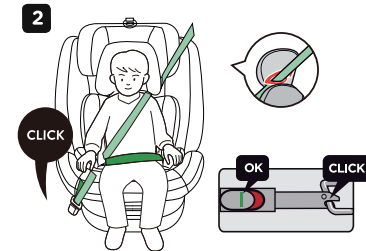
5.3.9 Pass the vehicle seat belt through the bottom of the armrest, ensure the lap belt is stretched as low as possible over the child's hips, buckle the vehicle seat belt until hear a click. Place the diagonal belt through red belt guide hook and must pass the middle between child's shoulder and neck.

5.3.10 The insertion guides facilitate the installation of the safety seat with the aid of the ISOFIX securing points and prevents damage to the upholstery. When not in use they should be removed and stored in a safe place. In vehicles with a reclining back the insertion guides should be removed before the seat is reclined. Problems that may arise are generally the result of accumulation of dirt or foreign bodies in the insertion guides and the clasps. To solve this type of problem simply clean the part in question.



Note :

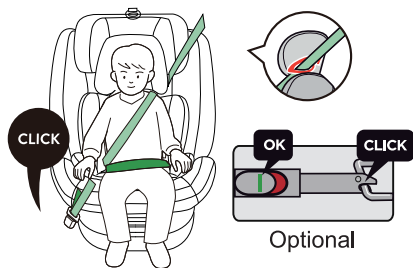
Use backrest rotating handle to swivel the seat 180° for forward facing installation, backrest hanger and L-backrest hanger are hooked each other.



Uninstalling the ISOFIX system

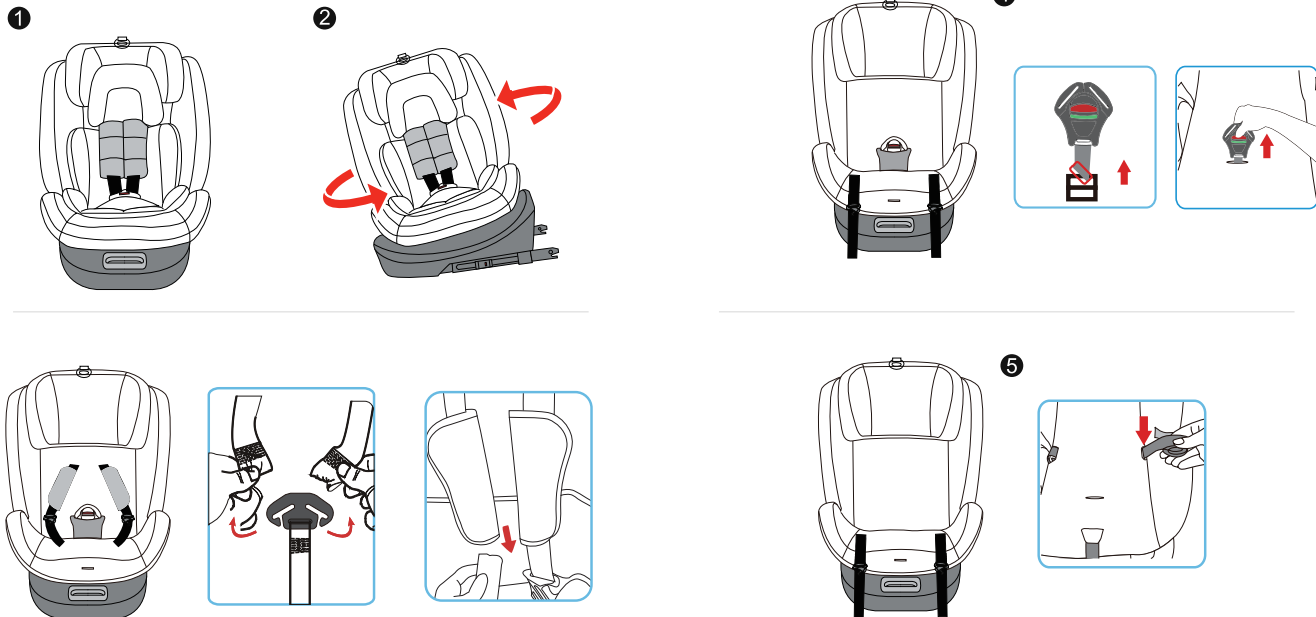
To free the ISOFIX anchoring, press backwards the ISOFIX System unlock buttons (the indicator will change from green to red color), in order to free the seat from the vehicle ISOFIX anchoring system.

5.4 100-150 Install Forward Facing: Adult safety-belt only

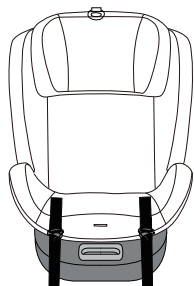


6. Removal Fabric Cover and Assembly

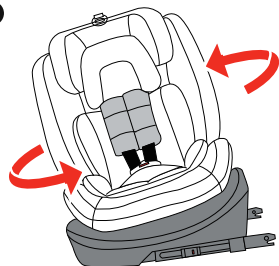
6.1 Removal



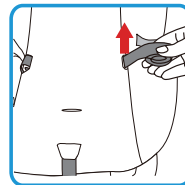
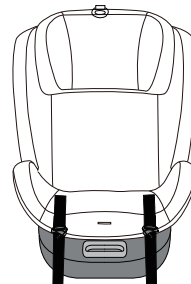
6



7

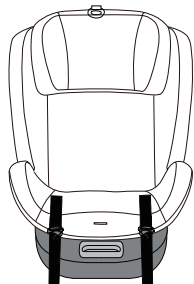


3

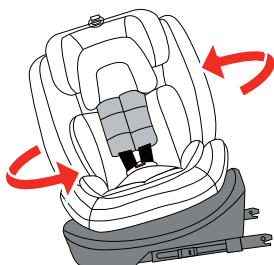


6.2 Assembly

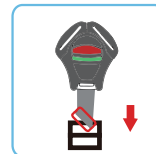
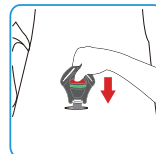
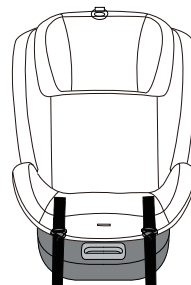
1

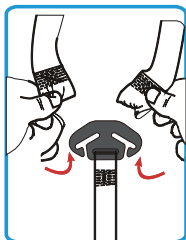
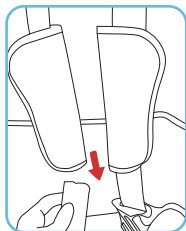


2

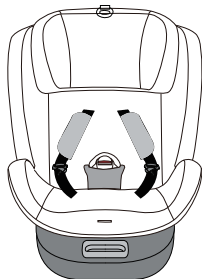


4

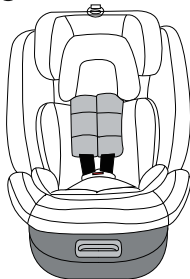




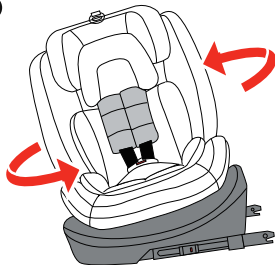
5



6



7



7. Cleaning

Please be sure to use only original seat covers, as the seat cover is important to the proper functioning of the system. Replacement seat covers are available from your retailer and or at branches.

! The child seat must not be used without the seat cover.

7.1 The cover can be removed and washed with a mild detergent using the washing machine's cycle for delicate items (300C). Please observe the instructions on the washing label of the cover. The colours of the cover may fade if washed at more than 300C. Do not spin, and never tumble dry in an electric clothes dryer (the fabric may separate from the padding).

7.2 The plastic parts can be cleaned using soapy water. Do not use harsh cleaning agents (such as solvents).

7.3 The harness can be removed and washed in lukewarm soapy water. Caution! Never remove the buckle tongues from the straps.

8. Checklist

For safety's sake read through this checklist before you set off. Check that the harness belt system fits properly and tightly around your child and that the shoulder belts are at the correct height. Check regularly that the belt in the baby car seat is not damaged. If it is damaged do not use your product in any circumstances and contact your supplier or importer (see address list in the service card). Check that you have secured your baby car seat with the seat belt. If you have any questions, please contact your supplier.

8.1 Make sure that you have the following details to hand:

8.2 Serial number underneath on the service card.

8.3 Mark and type of vehicle and seat on which the baby car seat used.
Age and weight of your child.

9. Warranty

The warranty period starts from the date of purchase and is valid for a period of 12 months. The warranty is only applicable to the original owner and is not transferable. The warranty is only applicable to products that have not been adapted by the user. In the case of any defects, the owner is required to return the product to the retailer. If the retailer can not solve the problem, he must return the product, complete with a clear description of the complaint and a validated purchase receipt to the manufacturer. Exchanger or return can not be demanded. Repairs do not constitute an extension to the warranty term. The manufacturer is not liable for any damages other than those on products supplied.

No warranty is given if:

9.1 The product is not supplied complete with the validated purchase receipt to the manufacturer.

9.2 Defects are caused by misuse or maintenance which differ from that indicated in the instruction manual.

9.3 Repairs are carried out by third parties.

9.4 Defects are caused by neglect.

9.5 Damage or removal of any serial number is found.

9.6 If there is normal wear and tear which may be expected from everyday use.

9.7 The stated warranty terms and conditions have not been satisfied.