

BABYMOOV A003110 Turbo Steam Plus 2-in-1 Steriliser



BABYMOOV A003110 Turbo Steam Plus 2-in-1 Steriliser Instruction Manual

[Home](#) » [babymoov](#) » BABYMOOV A003110 Turbo Steam Plus 2-in-1 Steriliser Instruction Manual 

Contents

- 1 BABYMOOV A003110 Turbo Steam Plus 2-in-1 Sterilisation
- 2 FEATURES
- 3 HOW TO USE
- 4 STERILISER
- 5 ADJUST THE STERILISER CONFIGURATION
- 6 MAINTENANCE
- 7 Lifetime warranty
- 8 Documents / Resources
 - 8.1 References
- 9 Related Posts



BABYMOOV A003110 Turbo Steam Plus 2-in-1 Sterilisation



WARNINGS

- Avoid spillage on the connector.
- Misuse of the product may cause potential injury.
- The heating element surface is subject to residual heat after use.
- This appliance is designed to be used for domestic and similar applications such as:
 - staff kitchen areas in shops, offices and other working environments, farms,
 - use by hotel, motel customers and other accommodation environments,
 - bed and breakfast environments.
- If the power supply cable gets damaged it must be replaced by the manufacturer, the after-sales service or people with similar qualifications, to avoid any risk of danger.
- This appliance shall not be used by children. Keep the appliance and its cord out of reach of children.
- The appliance can be used by persons with reduced physical, sensory or mental capabilities or lack of experience and knowledge if they have been given supervision or instruction concerning the use of the appliance in a safe way and understand the hazards involved.
- Children shall not play with the appliance.
- Waste Electrical and Electronic Equipment should be disposed of by selective collection. Do not throw electrical and electronic equipment away with unsorted household waste, but dispose of it at a selective collection point.
- This marking indicates that this product should not be disposed of with other household wastes throughout the EU.

ATTENTION

To sterilise perfectly, the following points are essential:

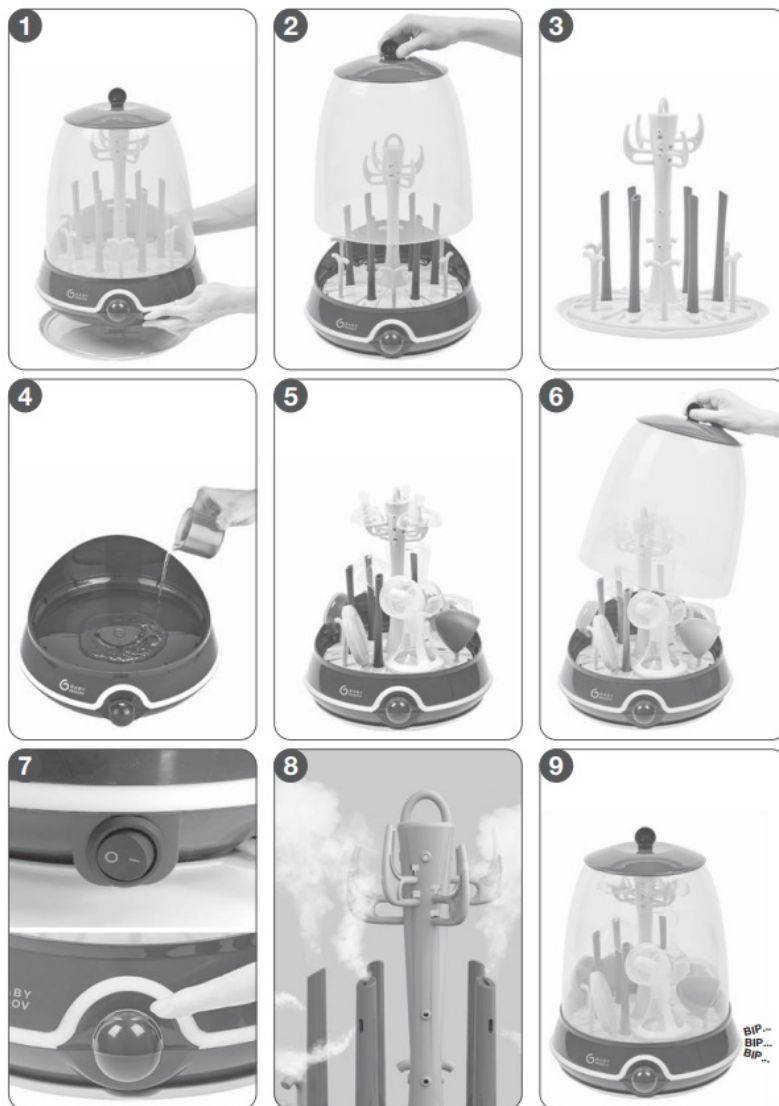
- Always wash your hands before preparing a bottle.
- Sterilisation takes around 6 mins, excluding cooling time*.
- Complete sanitization is only guaranteed when the process has not been interrupted.
- Use tap water with no added product.

- Before any sterilisation process, it is important to wash all the bottles and accessories, rinse them with cold water then empty them.
- Even the slightest trace of milk provides a breeding ground for bacteria.
- test carried out internally, using 80 ml of hot water (measuring cup).

SAFETY INSTRUCTIONS

- Only use the appliance to sterilise baby bottles and accessories. Any other use might prove dangerous.
 - Always remove the tray under the appliance before starting a sterilization cycle.
 - Check that your electrical power supply voltage is compatible with the appliance (see the details indicated beneath the appliance).
 - Never start the appliance without water.
 - Never move the appliance while it is working.
 - During the sterilisation process, the appliance can get very hot. Apart from the handle and switch, do not touch it.
 - The bottles will be very hot when they come out of the steriliser. Take care when removing them.
 - Never use the steriliser in damp surroundings and do not place it directly under the tap. Never immerse the appliance in water or any other liquid
 - Use this steriliser in the household only. Do not use the sterilizer out of doors.
 - Never add any product of any kind (salt water, medication, detergents) to the water: this will damage the appliance.
 - Do not touch the ventilation hole or the hood during operation, or before the the appliance has cooled down completely.
 - Always unplug the appliance before cleaning or filling it.
 - Unplug the appliance after use every time, to avoid any risk of starting it accidentally.
 - Keep it out of reach of children because during and after operation it contains extremely hot steam. Check that the power cable is out of reach too.
 - Never leave your child without supervision while the appliance is working. Children should be supervised to ensure that they do not play with the appliance.
 - Never leave the appliance close to any source of heat such as radiators, sunny Windows, etc.
 - Always use the sterilizer on a completely flat and dry surface.
 - Do not switch again start button again until the heating plate has cooled down completely (20 minutes).
- Note:** when plugging in the steriliser for the first time, you will find the power light will be illuminated. THIS IS NOT AN
- ERROR. After the first cycle, the unit will automatically shut off.

FEATURES

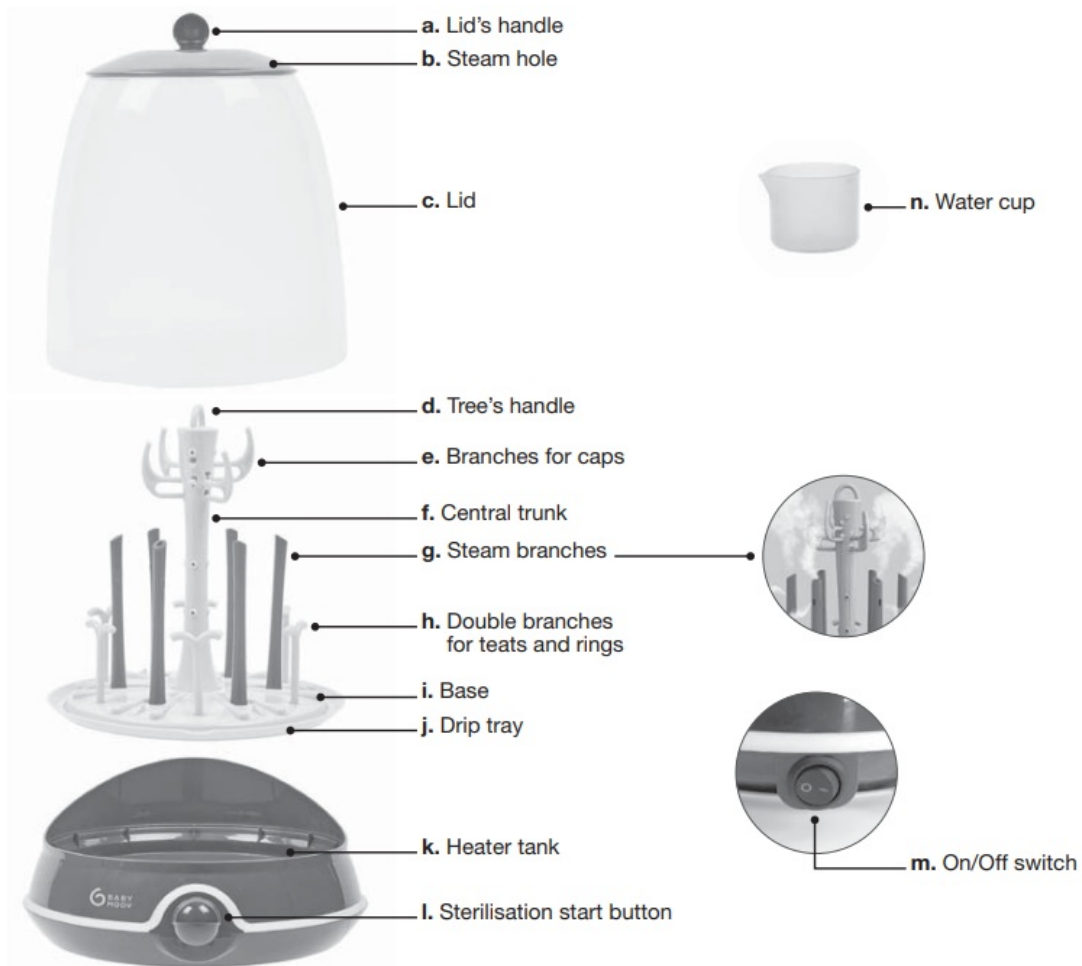


1. Sterilises the core of the bottles thanks to its exclusive system: arms fitted with steam nozzles.
2. Sterilises inside and outside the bottles.
3. Sanitizes up to 6 bottles with their accessories at a time.
4. 2 in 1: sterilizer and bottle draining rack.
5. Removable arms to sterilize any kind of accessories including the breast pumps.
6. Powerful: 550 W
7. Universal: for all types of baby bottles.
8. Safe: automatic stop when the cycle is complete.
9. Complies with EN 60335-1 and EN 60335-2-15 standards.

HOW TO USE

STERILISER

1. Remove the drip tray (j) under the appliance.

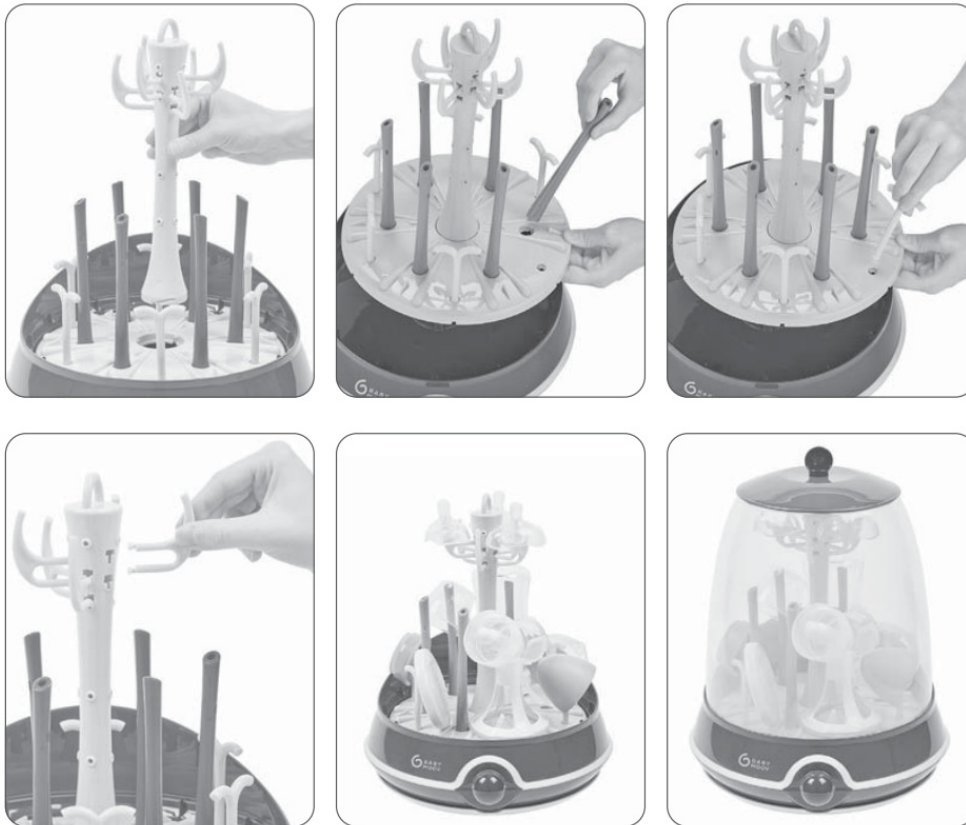


2. Open the lid (c).
3. Take out the tree assembly thanks to its handle (d) and place it on the drip tray (j).
4. Fill the measuring cup (n) with fresh and clean water. Pour the water into the heater tank (k).
5. Place the tree assembly into the appliance. Place the bottles upside-down on the steam branches (g) so that the steam can enter the bottles directly.
6. Arrange the teats and rings onto the small double branches (h) on the base of the appliances (l). Put the caps on the little branches at the top of the tree assembly (e).
7. Place the lid onto the appliance.
8. Plug in the steriliser to mains power, press the On/Off button (m), then the sterilisation start button (l).
9. The steam will go out through the steam branches (g), the central trunk (f) and the bottom of the appliance, ensuring complete sterilisation. A power indicator will light up, showing that the steriliser is working.
10. When the sterilisation cycle is complete, an alarm will sound and the sterilisation indicator (l) will turn off. However, the steriliser is still powered on until the On/Off switch (m) is switched off. Open the lid thanks to its handle (a) and remove the bottles carefully: they will be very hot. Always allow the appliance to cool between the cycles or before handling the bottles and accessories.

DRAINING RACK

- Place the tree assembly on the drip tray (j).
- Wash your bottles carefully.
- Put the bottles and accessories on the branches of the tree assembly.
- The remaining water will flow on the white base and be collected by the drip tray.

ADJUST THE STERILISER CONFIGURATION



You can adapt the configuration of the tree depending on the accessories you need to sterilise. The central trunk (f) and all the branches are removable so that you can get the white base (i) alone to sterilise big accessories such as breast pumps.

- Remove the longer nozzles by unfastening them in the anti-clockwise direction. Apply the reverse procedure to fasten.
- Remove the shorter nozzles by unfastening them in the clockwise direction. Apply the reverse procedure to fasten.
- Remove the hooks by raising them upwards while pulling them towards you.

MAINTENANCE

Cleaning

- Never submerge the appliance in water, and don't fill it right up with water.
- Use a slightly damp cloth to clean the inside and outside.


De-scaling

Do not use any de-scaling products. Depending on how hard the water used is and after a certain period, a layer of scale may build up in the tank. For the sterilizer to work properly, the tank needs to be de-scaled regularly. Proceed as follows: mix 100 ml hot water with 100 ml white vinegar and pour it all into the tank (k). Leave to act for 30 minutes then empty the appliance. Then use a damp cloth to clean it.

Lifetime warranty

Register within 2 months. See conditions at babymoov.co.uk.

Documents / Resources

	<p>BABYMOOV A003110 Turbo Steam Plus 2-in-1 Sterilizer [pdf] Instruction Manual A003110 Turbo Steam Plus 2-in-1 Sterilizer, A003110, Turbo Steam Plus 2-in-1 Sterilizer, Steam Plus 2-in-1 Sterilizer, Plus 2-in-1 Sterilizer, Sterilizer</p>
---	---

References

- [Babymoov® – Innovative Award-Winning Baby Products](#)
- [Babymoov® : Site OFFICIEL | Produits pour Bébé](#)
- [Lifetime Warranty Map | Babymoov®](#)
- [User Manual](#)

[Manuals+](#), [Privacy Policy](#)

This website is an independent publication and is neither affiliated with nor endorsed by any of the trademark owners. The "Bluetooth®" word mark and logos are registered trademarks owned by Bluetooth SIG, Inc. The "Wi-Fi®" word mark and logos are registered trademarks owned by the Wi-Fi Alliance. Any use of these marks on this website does not imply any affiliation with or endorsement.