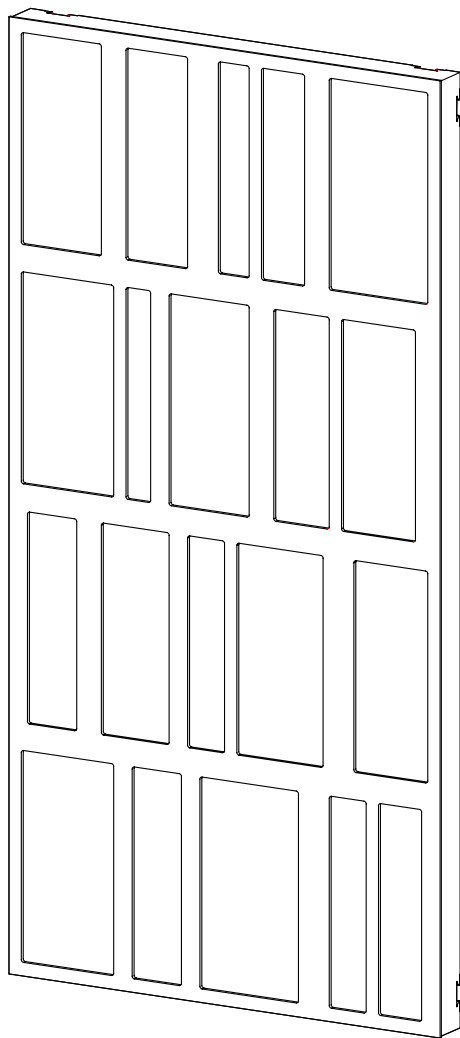


VicPattern Ultra Beat XL

Installation Manual

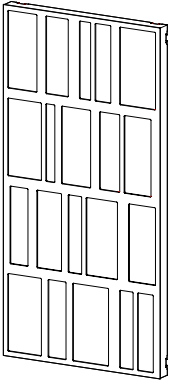
EN



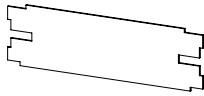
V/COUSTIC

✓ MATERIAL NEEDED

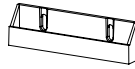
Included



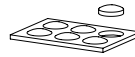
VicPattern Ultra Beat XL x2



Gauge x1

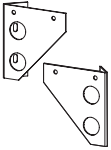


VicFix Mini x4



Silicone Drop x4

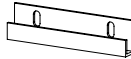
Not Included



VicFix Corner Plus



Wall Plugs and Screws



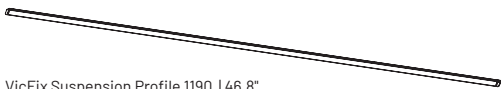
VicFix J Profile 80mm | 3.14"



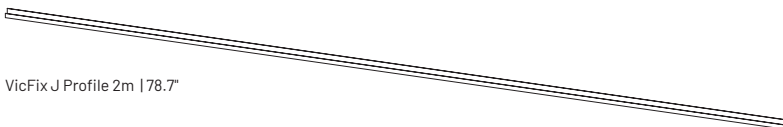
Drill



Level



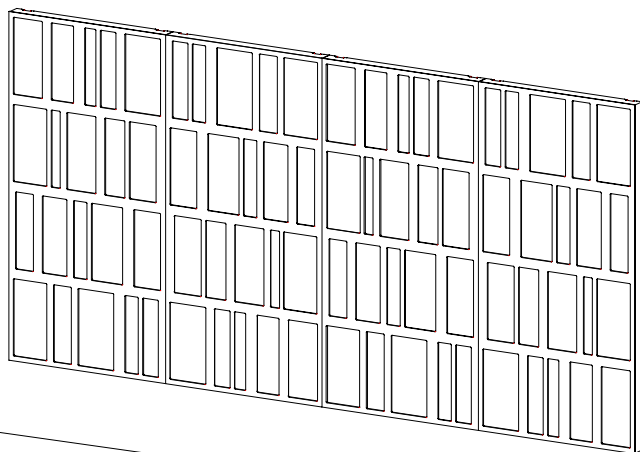
VicFix Suspension Profile 1190 | 46.8"



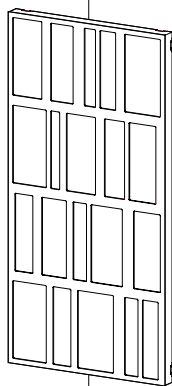
VicFix J Profile 2m | 78.7"

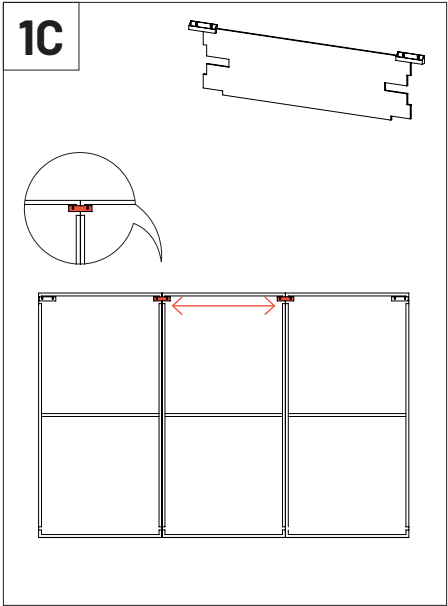
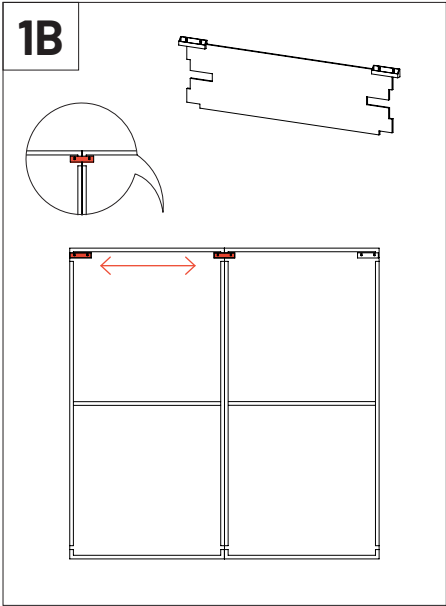
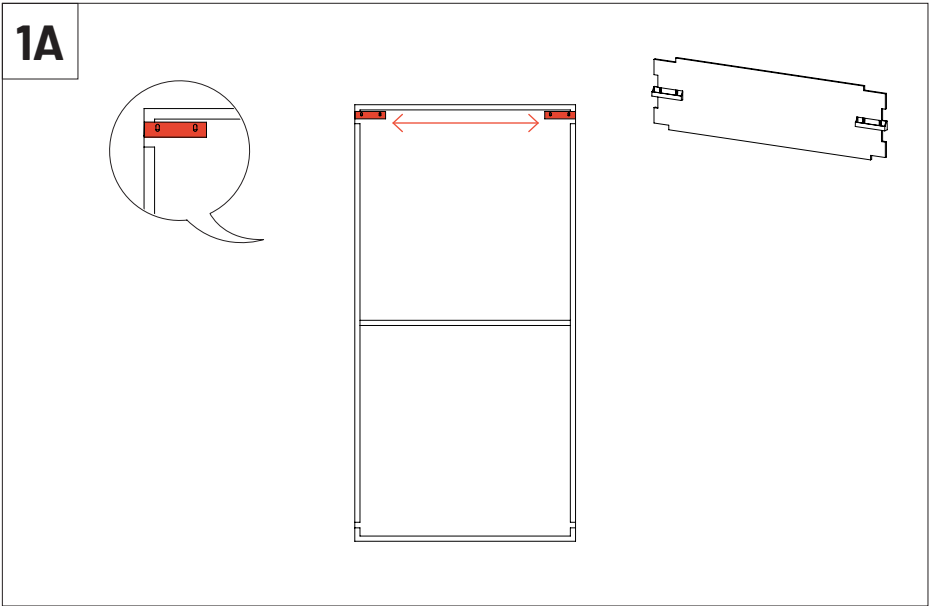
This product can also be installed on the wall with the VicFix J Profile 2m (sold separately).
For corner installation, use the VicFix Corner (sold separately).

Wall Installation



Corner Installation

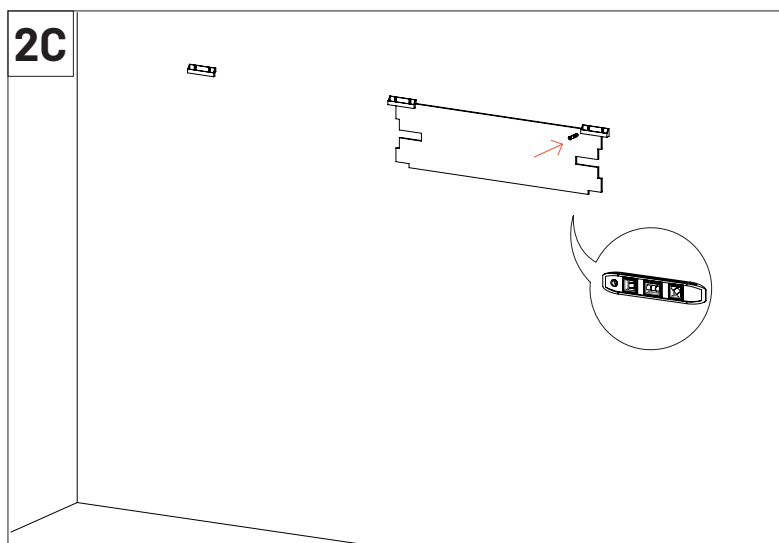
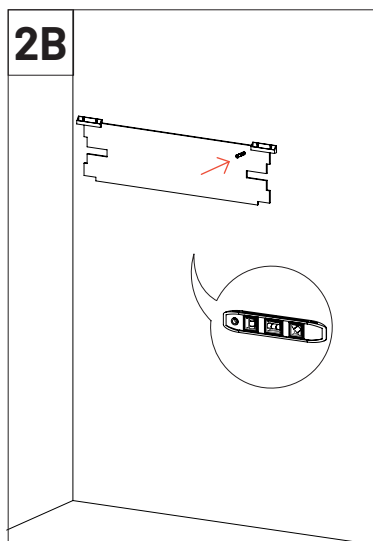
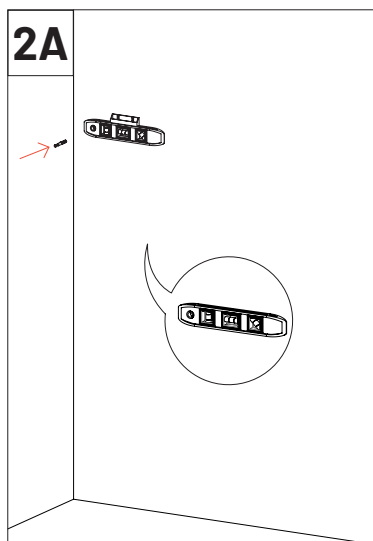




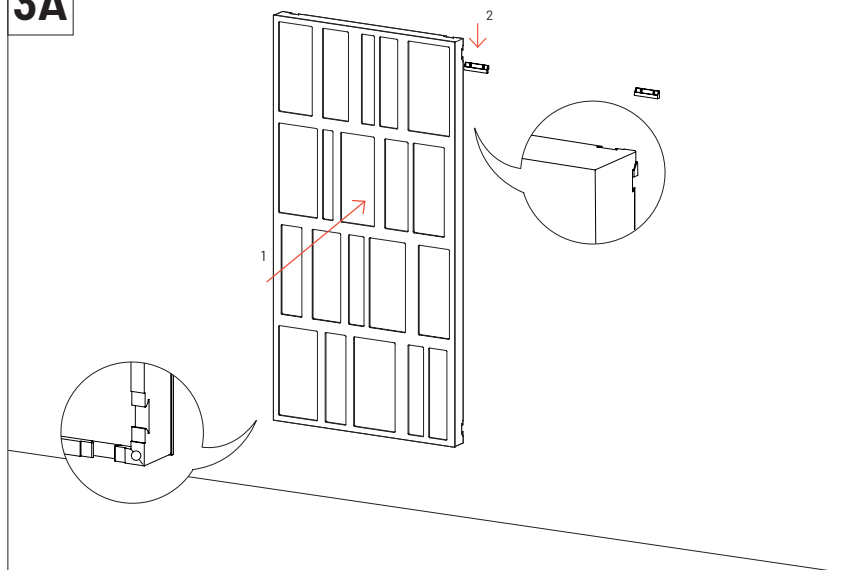
2

Wall installation - Two panel

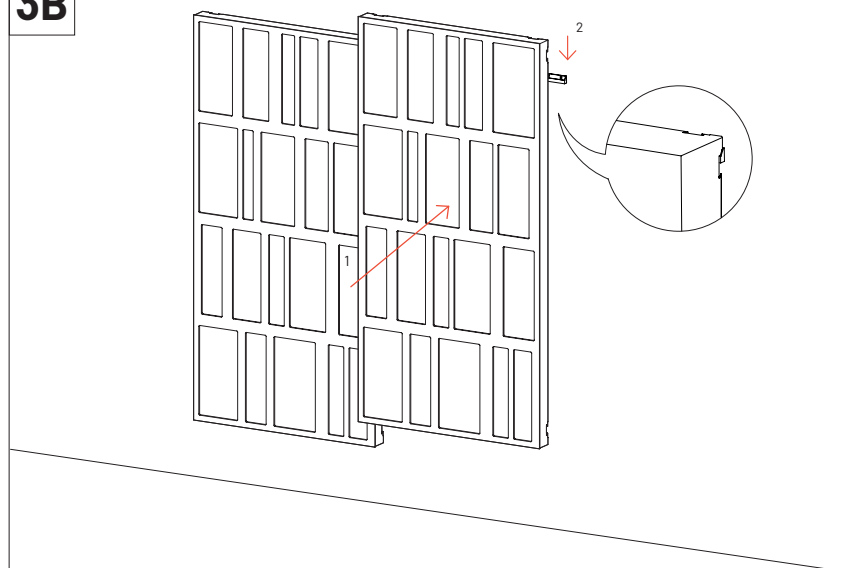
After defining the place where you want to install the panels, start marking the position of the VicFix Mini.



3A



3B



Main Office, R&D & Logistics

Rua do Pólo 3, nº 151
4590-001 Carvalhosa

T (+351) 255 136 746

Office

Rua Quinta do Bom Retiro Nº 16, Armazém 9
2820-690 Charneca da Caparica, Portugal

T (+351) 212 964 100

Info and Sales

E sales@vicoustic.com

www.vicoustic.com

V//COUSTIC
INNOVATIVE ACOUSTIC SOLUTIONS

© Vicoustic, 2024 | V2

No parts of this document might be copied and/or published without written consent of Vicoustic.