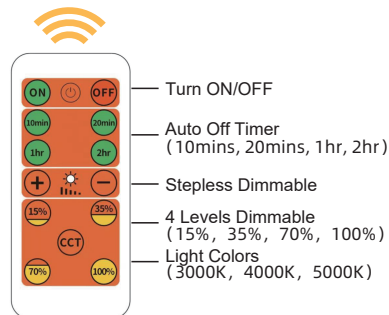


INSTRUCTION

Packing List

1X Lamp 1X Power Adapter 1X Support Plate
1X Tape 3X Expansion Screws
3X Steel Screws 1X Remote Control



Code matching before first usage:

- 1、 Remove the insulation sheet from remote control, then keep pressing OFF button and not release
- 2、 Plug power adapter into power socket, wait for 5~10 seconds, the lamp will flash once. The code matching is successful.

Remind:

If the code matching is failed, please don't worry, press the touch switch to turn on lamp and remove the power adapter from power socket. It can initialize the lamp, then begin new code matching process.

EN

LED WALL LIGHT

SKU	LB-W002	Control Mode	Remote Control
Material	Plastic ABS	Dimension	52 X7.5 X 3 CM
Lighting Source	SMD2835 LED	Input Voltage	AC100-240V 50/60HZ
USB Output	DC5V Max.2A	Power	Max.5W
Lighting Brightness	Max.500Lm	Lighting Color	3000K-4000K-5000K
CRI	CRI>80	Waterproof Rate	IP20

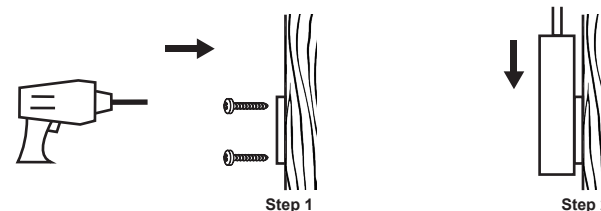
This device complies with part 15 of the FCC Rules. Operation is subject to the following two conditions: (1) This device may not cause harmful interference, and (2) this device must accept any interference received, including interference that may cause undesired operation.

FCC warning:

Any Changes or modifications not expressly approved by the party responsible for compliance could void the user's authority to operate the equipment.

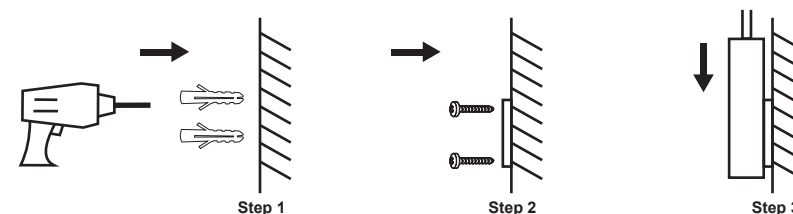
Installation Methods

Installation method 1 Wooden Wall



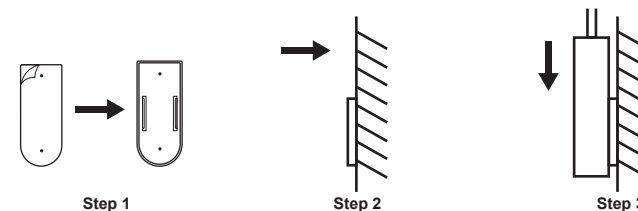
Fix the support plate on the wooden surface with steel screws, and then slide the lamp base onto the support plate.

Installation method 2 Non-wooden Wall



Drill 2 holes ø5mm in the wall, insert the expansion screws into the wall, then fix the support plate on the wall with the steel screws, and then slide the lamp base onto the support plate.

Installation method 3 Any Type of Flat Wall



Use tape to stick the support plate on the required surface, and then slide the lamp base onto the support plate.

Enuotek®

✉ service@enuotek.com

🌐 www.enuotek.com

Made in China

